



**GEOFRAME
PROCESSED
INTERPRETATION**

BestDT* Final Result

Custom Sonic Processing

* A Mark of Schlumberger

Using the following logs:

CALIPER
SP

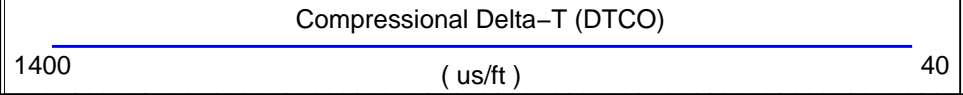
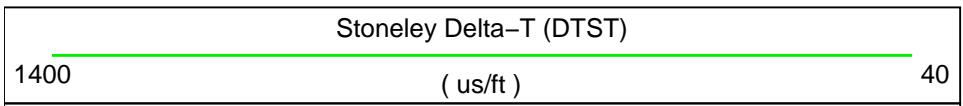
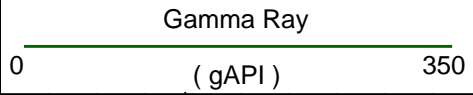
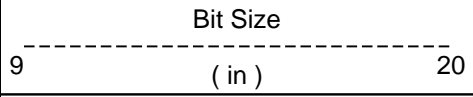
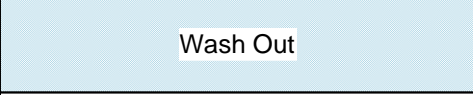
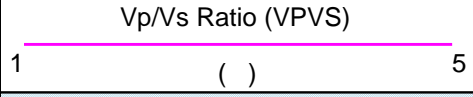
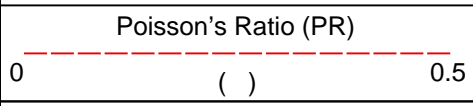
COMPANY: ALL WEBB'S ENTERPRISES, INC.
WELL: MF-40
FIELD: C-23 CANAL
County: MARTIN
State: FLORIDA
COUNTRY:
Date Logged: 6-Sep-2005 **Date Processed:**
Well Location: 27 12' 21" N
 80 28' 32" W
Elevations: **KB:** **DF:** **GL:**
API Number: **Job Number:**

FOLD HERE The well name, location and borehole reference data were furnished by the customer.

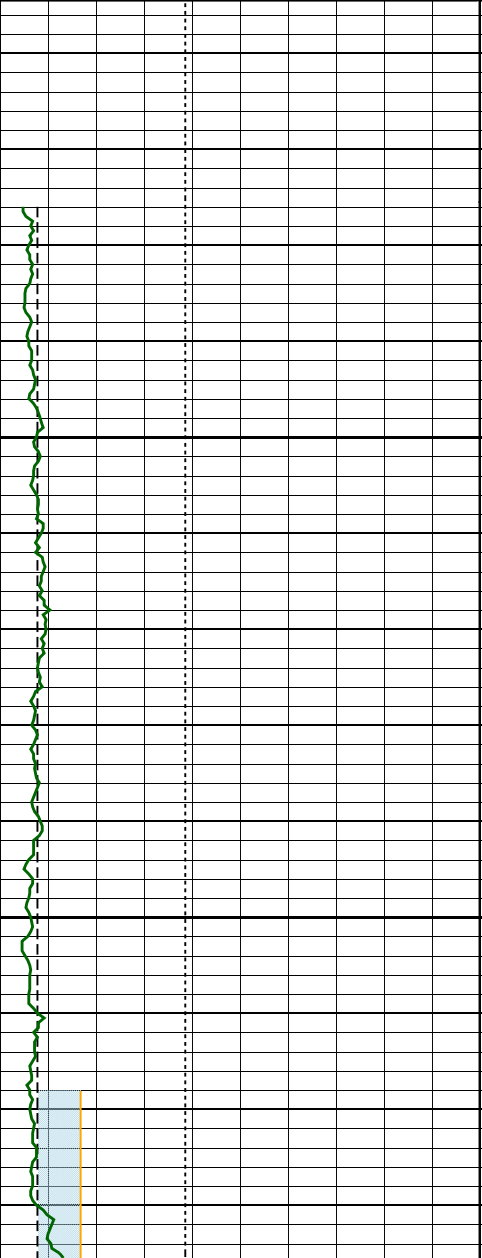
All interpretations are opinions based on inferences from electrical or other measurements and we cannot, and do not guarantee the accuracy or correctness of any interpretation, and we shall not, except in the case of gross or willful negligence on our part, be liable or responsible for any loss, costs, damages or expenses incurred or sustained by anyone resulting from any interpretations made by any of our officers, agents or employees. These interpretations are also subject to Clause 4 of our General Terms and Conditions as set out in our current Price Schedule.

Field Recording:	Location: BECKLEY, WV	Software Version: 13C0-300	Engineer: R. SIMON
Office Recording:	ICS Center:	Baseline:	Log Analyst:
Mud and Borehole Measurements:			
Rm @ Measured Temperature: 41ohm.m @ 88degF	BHT: 88degF	Bitsize: 9.875in	
Rmf @ Measured Temperature: 34.85ohm.m @ 88degF	Type Fluid in Hole:	GEL	
Rmc @ Measured Temperature: 119ohm.m @ 88degF	Mud Density: 8.4lbm/gal		

Remarks:
 TOOL STRING AS PER ATTACHED SKETCH.
 THIS IS THE FIRST RUN IN THE HOLE.



MD
1 : 240
ft

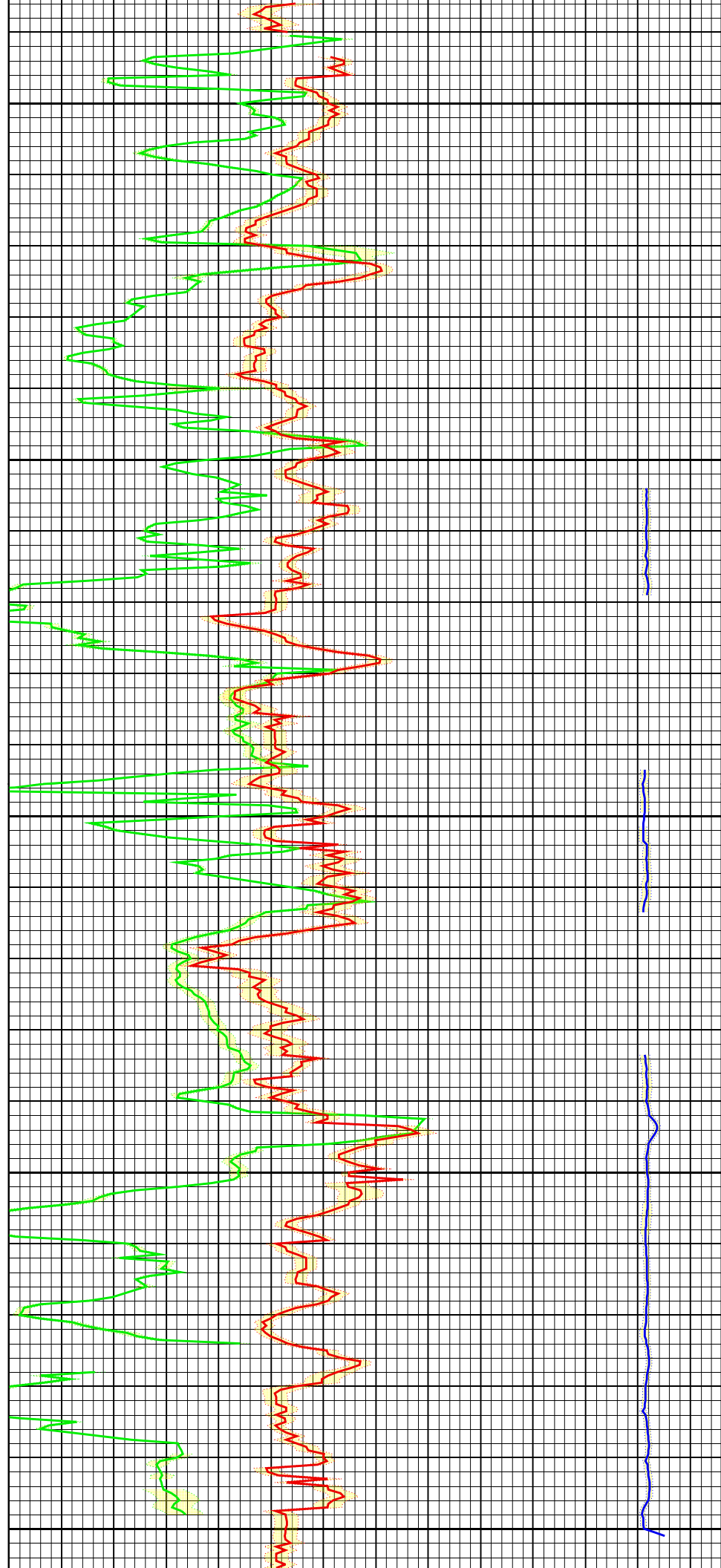
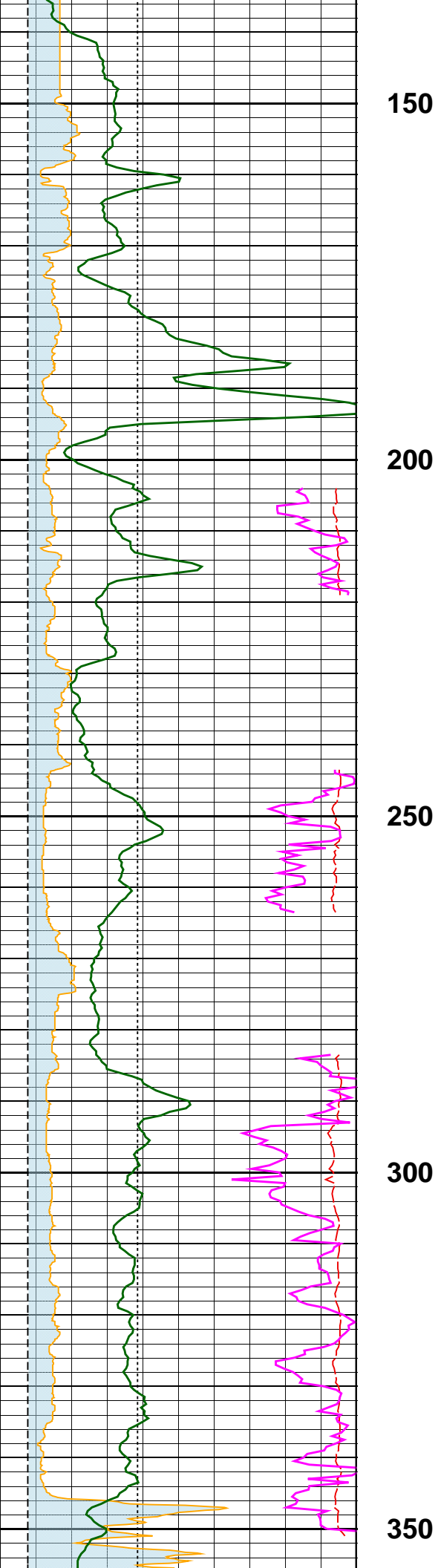


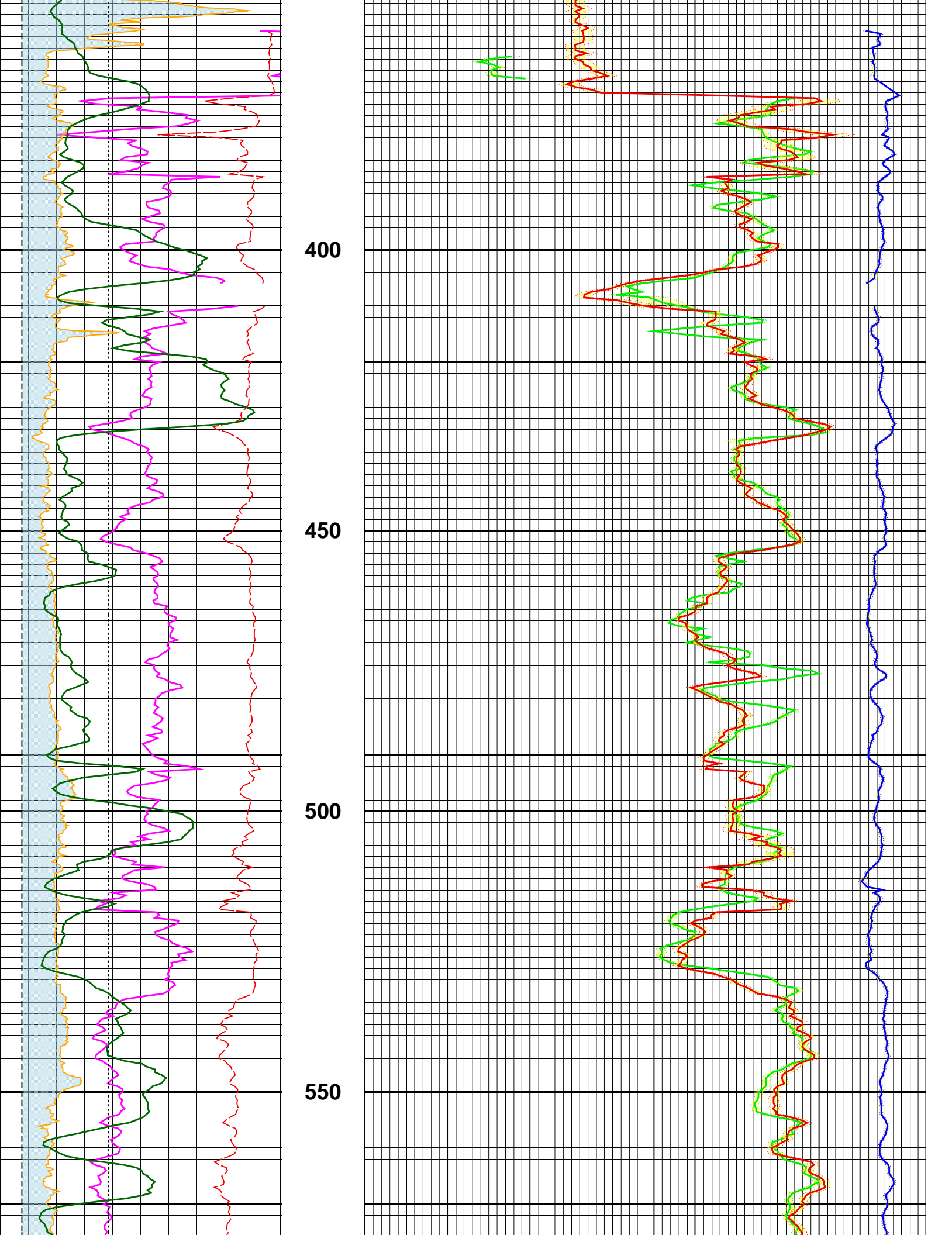
50

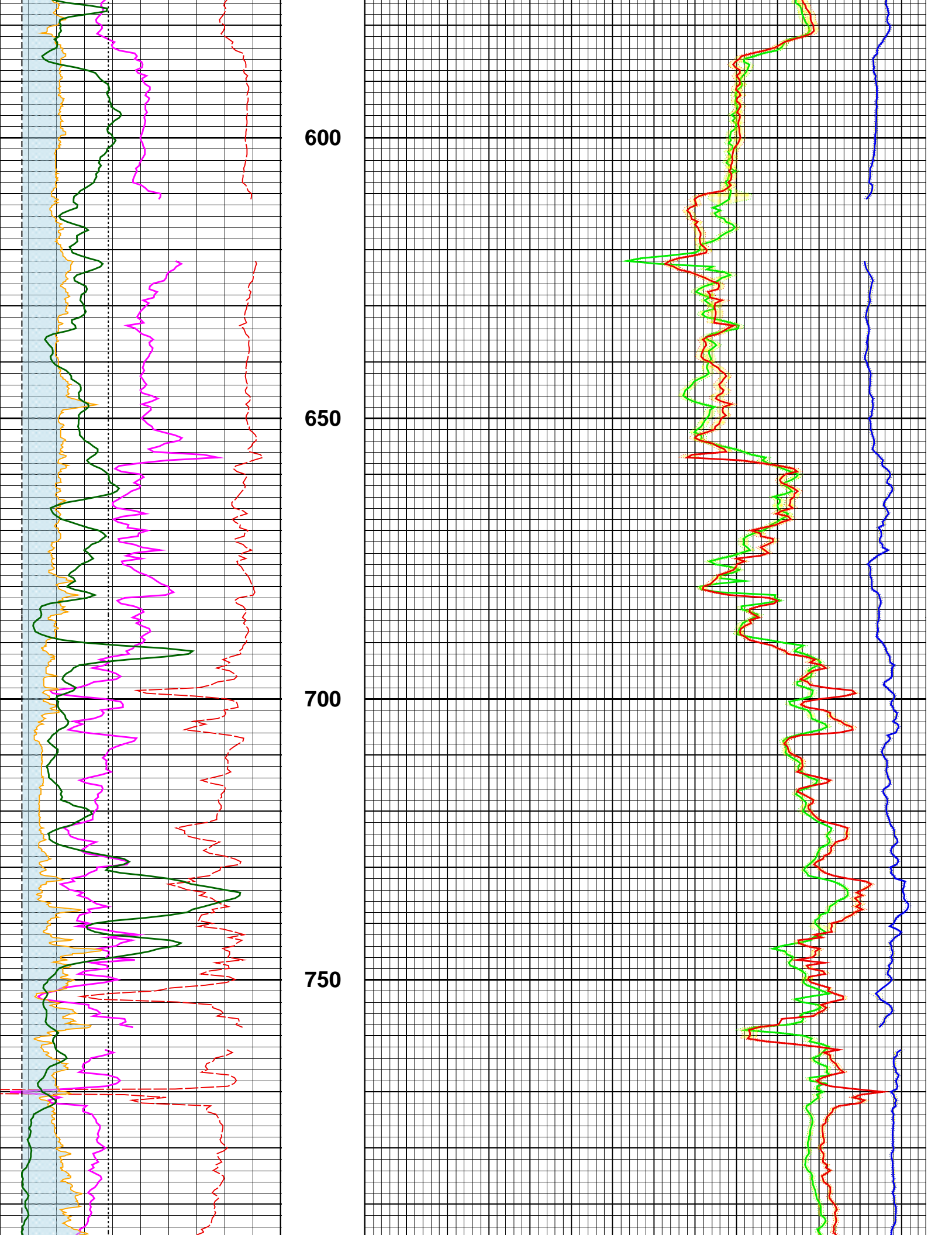
100

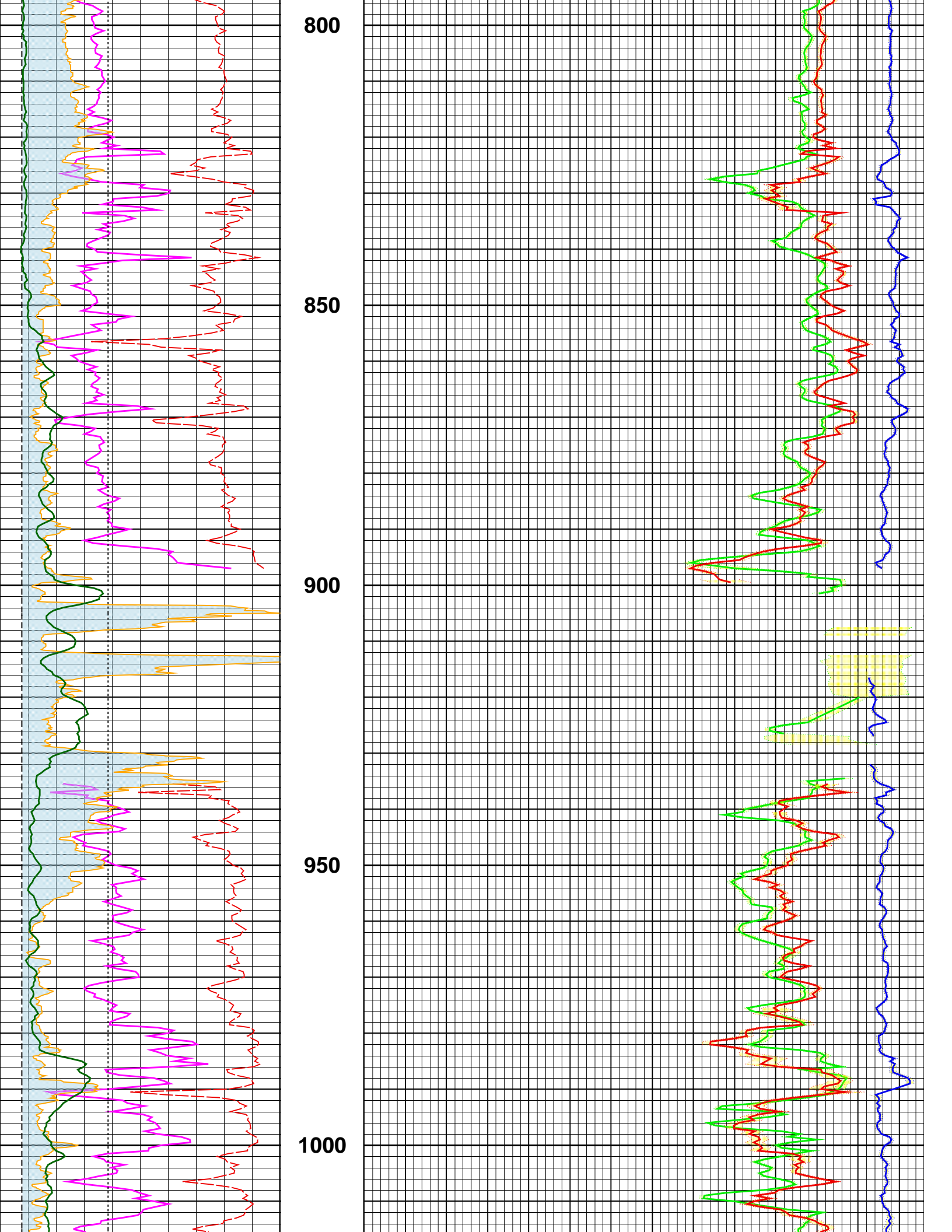
}

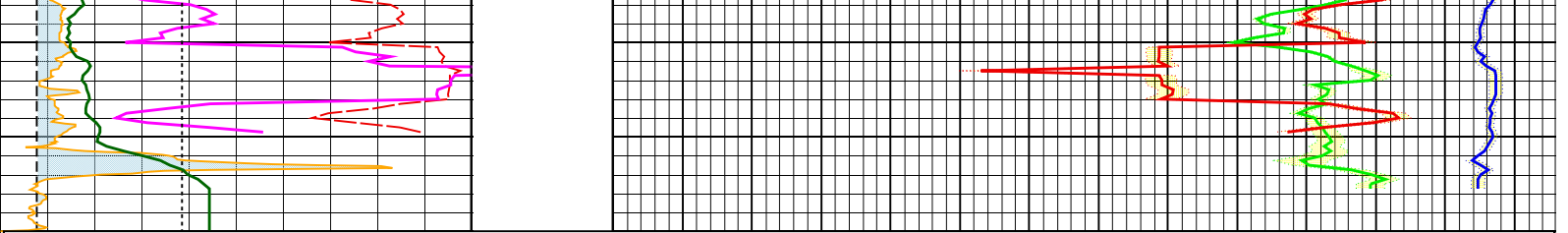
}











--- Finalization Result ---

1	MPS Compressional	Receiver	Absent levels=	725	
1	MPS Compressional	Transmitter	Absent levels=	655	
1	MPS Shear	Receiver	Absent levels=	2030	
1	MPS Shear	Transmitter	Absent levels=	2011	
1	UDP Shear	Receiver	Absent levels=	416	
1	UDP Shear	Transmitter	Absent levels=	459	
1	LDP Shear	Receiver	Absent levels=	418	
1	LDP Shear	Transmitter	Absent levels=	476	
1	UDP_IN Shear	Receiver	Absent levels=	394	
1	UDP_IN Shear	Transmitter	Absent levels=	394	
1	LDP_IN Shear	Receiver	Absent levels=	481	
1	LDP_IN Shear	Transmitter	Absent levels=	559	
1	MST Stoneley	Receiver	Absent levels=	472	
1	MST Stoneley	Transmitter	Absent levels=	446	
1	MPS Compressional	DDBHC	Absent levels=	586	*Selected*
1	MPS Shear	DDBHC	Absent levels=	2023	
1	UDP Shear	DDBHC	Absent levels=	367	
1	LDP Shear	DDBHC	Absent levels=	389	
1	UDP_IN Shear	DDBHC	Absent levels=	360	*Selected*
1	LDP_IN Shear	DDBHC	Absent levels=	420	
1	MST Stoneley	DDBHC	Absent levels=	377	*Selected*

Gamma Ray 0 _____ 350 (gAPI)	MD 1 : 240 ft	Compressional Delta-T (DTCO) 1400 _____ 40 (us/ft)
Bit Size 9 - - - - - 20 (in)		Shear Delta-T (DTSM) 1400 _____ 40 (us/ft)
Wash Out		Stoneley Delta-T (DTST) 1400 _____ 40 (us/ft)
Vp/Vs Ratio (VPVS) 1 _____ 5 ()		
Poisson's Ratio (PR) 0 - - - - - 0.5 ()		