

FLORIDA GEOPHYSICAL LOGGING

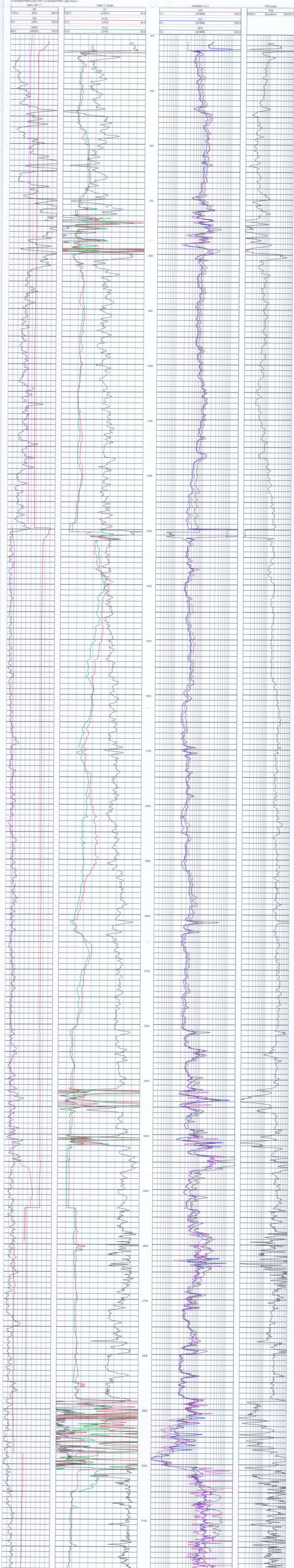
Company: MISSIMER INTERNATIONAL
 Well: NCRWTF IW #2
 County: COLLIER State: FLORIDA Country: USA

Location: Township: 48S Range: 26E
 Section: Permanent Datum: Pad Level (P.L.) Elevation: API No.:
 Log Measured From: P.L. above Perm. Datum EKB:
 Drilling Measured From: P.L. ECL:

Description	Run 1	Run 2	Run 3	Run 4
Date	12/03/95	12/07/95	1/13/96	2/12/96
Run Number	ONE	THREE	NINE	TEN
Bit Size	48"	12.25	12.25	13.5
Type Fluid	WATER	WATER	WATER	WATER
Top Log Interval	0	420	1310	2490
Bottom Log Interval	435	1308	2475	3210
BHT	N/A	N/A	N/A	89"
Truck	101	102	101	101
Engineer	JONES	WILL/LEE	WILLIAMS	WILL/JONES
Witness	B.MALIVA	TATE/ROME	E.SHAWKEY	SHAMAL/T

Remarks:
 RUN # 10 DEPTH SHIFTED -6 FEET TO MATCH DIL. RECORDED ON RUN #9.

Disclaimer:
 Interpretations are opinions based upon inferences from electrical or other measurements and algorithms. Empirical relationships, and assumptions which are not infallible and with respect to which log analysts may differ. Accordingly, Florida Geophysical Logging, Inc. cannot and does not guarantee the accuracy or correctness of any interpretation and shall not be liable or responsible for any losses, costs, damages, or expenses incurred or sustained by anyone resulting from any interpretation made by any of our officers, agents, or employees.



COLLIER COUNTY NCRWTP - INJECTION WELL #2 SUMMARY

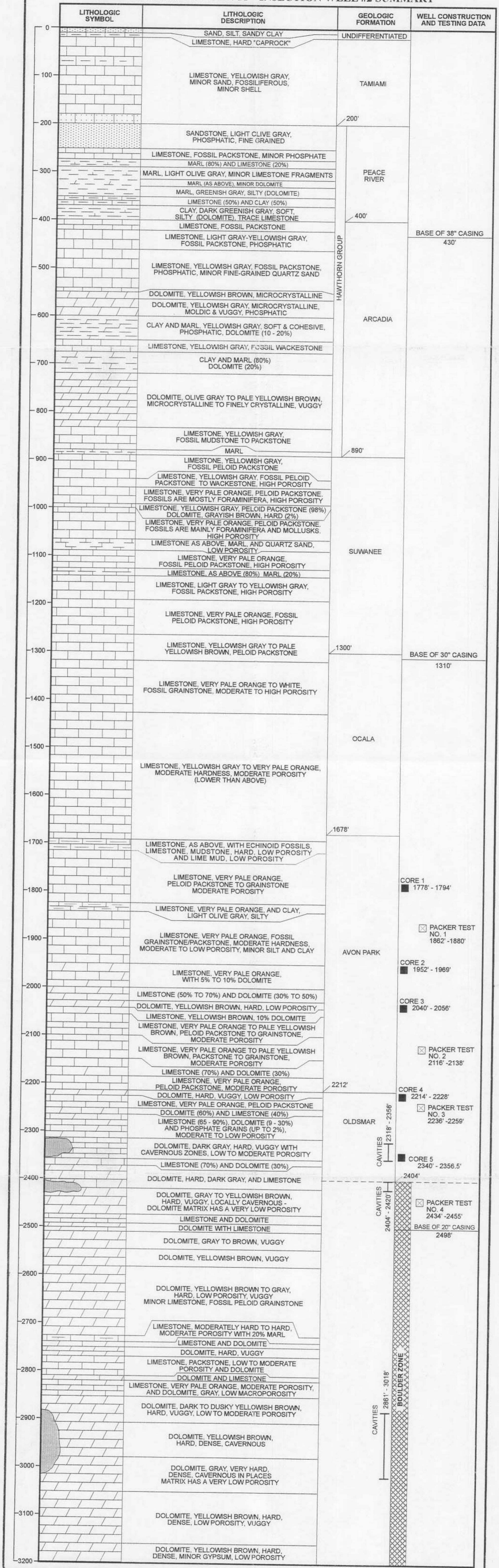


PLATE 1.