

Subject: RCID Step Test

Date: Thu, 04 Dec 2003 15:48:00 -0500

From: Ed Rectenwald <erecten@sfwmd.gov>

Organization: South Florida Water Management District

To: Michael Bennett <mbennet@sfwmd.gov>

Test completed on 11/26/03

Pump set at 115 feet bls.

Transducer set at 90 feet bls.

M.P.=2.60 feet als.

Orifice Plate - 8x6

Initial WL - 72.72 feet H2O

Step	Pump %	Manometer	Transducer	GPM	Drawdown
1	57	10.5" 527 gpm	0.94'	500	-4.20'
2	68	20" 710	1.698'	698	-7.34'
3	83	34" 940	2.935'	910	-11.329
4	100	53" 1153	4.417'	1136	-17.12

Ed Rectenwald <erecten@sfwmd.gov>

Staff Hydrogeologist

South Florida Water Management District

RCID_steptestdata.txt

Subject: RCID Step Test
Date: Thu, 04 Dec 2003 15:48:00 -0500
From: Ed Rectenwald <erecten@sfwmd.gov>
Organization: South Florida Water Management District
To: Michael Bennett <mbennet@sfwmd.gov>

Test completed on 11/26/03
Pump set at 115 feet bls.
Transducer set at 90 feet bls.
M.P.=2.60 feet als.
Orifice Plate - 8x6
Initial WL - 72.72 feet H2O

Step GPM	Pump % Drawdown	Manometer	Transducer
1 0.94'	57 500		10.5" -4.20'
2 1.698'	68 698		20" -7.34'
3 2.935'	83 910		34" -11.329
4 4.417'	100 1136		53" -17.12

Ed Rectenwald <erecten@sfwmd.gov>
Staff Hydrogeologist
South Florida Water Management District

Ed Rectenwald
Staff Hydrogeologist
South Florida Water Management District
3301 Gun Club Road
West Palm Beach
Florida
33406

<erecten@sfwmd.gov>
Fax: (561) 682-5029
Work: (561) 682-2975
Conference Software Address

Additional Information:
Last Name Rectenwald
First Name Ed
Version 2.1

0.14 x 11.60 = 1.62
0.26 x 11.60 = 3.02
0.46 x 11.60 = 5.34
0.65 x 11.60 = 7.54



Schedule Of Events

Task Reed Creek Improvement Well

Permitting Two Weeks			
Floridan Aquifer Test / Monitor Well		* Preconstruction Meeting	
Starting Date		April 3 4 5 6 7 8 9 10 11	
Activity Schedule		Day 1 2 3 4 5 6 7 8 9 10 11 12 13 14 15 16 17 18 19 20 21 22 23 24 25 26 27 28 29 30 31 32 33 34 35 36 37 38 39 40	
1	Mobilize to Site	4	
2	Drill and Set 60' of 24" Pit Casing	2	
3	Drill 8" Pilot Hole to +/-250' & Log	2	
4	Ream Pilot to 23" from 60' to 200', Calliper	2	
6	Set & Cement 18" x .375" Casing to +/-200'	2	
7	Drill 8" Pilot Hole to +/-700'	5	
7	Geophysical Logs Static & Flowing	3	
8	Specific Capacity Test (Step Test)	4	
8	Drill 8" pilot hole from 700'-1350'	7	
Floridan Aquifer Test / Monitor Well		12 13 14 15 16 17 18 19 20 21 22 23 24 25 26 27 28 29 30 31 May	
Starting Date		Days 41 42 43 44 45 46 47 48 49 50 51 52 53 54 55 56 57 58 59 60 61 62 63 64 65 66 67 68 69 70 71 72 73 74 75 76 77 78 79 80	
Activity Schedule		Days	
9	Continued		
10	Geophysical Logs Static & Flowing	3	
11	Ream pilot hole to 17" from 700' - 1200'	8	
12	Calliper & Gamma Logs	1	
13	Set & Cement 1200' of 18" x 0.365" Casing	1	
14	Temp & Gamma Logs on Lifts	8	
15	Pressure Test Casing 100psi	2	
16	Clean borehole from 1200' to 1350'	4	
17	Drill pilot hole from 1350' to 2200'	12	
Floridan Aquifer Test / Monitor Well		June	
Starting Date		Days 81 82 83 84 85 86 87 88 89 90 91 92 93 94 95 96 97 98 99 00 01 02 03 04 05 06 07 08 09 10 11 12 13 14 15 16 17 18 19 20	
Activity Schedule		Days	
17	Continued		
18	Geophysical Logs	2	
19	3 Packer Test	9	
20	Backplug pilot hole from 2200' to 1,500'	3	
21	Develop Well	1	
22	Specific Capacity Test & Development	4	
Floridan Aquifer Test / Monitor Well		July	
Starting Date		Days 21 22 23 24 25 26 27 28 29 30 31 32 33 34	
Activity Schedule		Days	
22	Continued		
23	Wellhead / Pad	2	
24	Remove Drilling Pad & site Work	3	
25	Demobilize Rig	2	

22041170

Extra Rig Time
 Totals 96 Estimated Calendar Days : 134
 Working Days
 Weekends
 Suspend Operations/Holidays

Orange County Utilities Central Laboratory
9124 Curry Ford Road
Orlando, FL 32825
(407) 836-6950
NELAP ID#: E53398

ANALYTICAL RESULTS

Report Date: 07/07/03

Work Order: O306229

Deliver To: Chris Sweazy
South Florida Water Mgmt. Dist
1707 Orlando Central Parkway
Suite 200
Orlando, FL 32809

NOTE: This document is included as part of the Analytical Report for the above referenced Laboratory Workorder ID and should be retained as a permanent record thereof. The results contained in this report meet all requirements of the National Environmental Laboratory Accreditation Conference (NELAC) Standards.

PT #1

Certified By:


Kimberly A. Kurinhiro, Utilities Section Manager



Certificate of Analysis

Client	Workorder	Work ID
S. Florida Water Mgmt District	O306229 [9729]	RCID Test Well 061903

Workorder Sample Summary

Lab ID	Sample ID	Matrix	Collect Date/Time	Receive Date/Time
O30622901	RCID Test Well	Drinking Water	06/19/03 10:18	06/19/03 12:05

Certificate of Analysis

Lab ID	Sample ID	Collected	Received	Reported	Matrix
O30622901	RCID Test Well	06/19/03 10:18	06/19/03 12:05	07/07/03 11:00	Drinking Water
(Results reported on a wet weight basis)					

WET CHEMISTRY - EPA 160.1

Prep Date	Prep Batch	Prep Method	Dilution	Analyzed	By	Analytical Batch
			1	06/24/03 11:15	KB	GEWC / 9686 [182586]
Parameter				Result	RDL	Units
Total Dissolved Solids				144	1	mg/L

WET CHEMISTRY - EPA 150.1

Prep Date	Prep Batch	Prep Method	Dilution	Analyzed	By	Analytical Batch
			1	06/19/03 13:00	FZ	GEWC / 9645 [182272]
Parameter				Result	RDL	Units
pH				7.71	0.01	SU

WET CHEMISTRY - EPA 120.1

Prep Date	Prep Batch	Prep Method	Dilution	Analyzed	By	Analytical Batch
			1	06/19/03 15:20	FZ	GEWC / 9661 [182309]
Parameter				Result	RDL	Units
Conductivity				264	1	umhos/cm

WET CHEMISTRY - EPA 170.1

Prep Date	Prep Batch	Prep Method	Dilution	Analyzed	By	Analytical Batch
			1	06/19/03 12:05	EZ	GEWC / 9672 [182349]
Parameter				Result	RDL	Units
Temperature				7.1	0.1	Degrees C

WET CHEMISTRY - SM5310C

Prep Date	Prep Batch	Prep Method	Dilution	Analyzed	By	Analytical Batch
			1	06/19/03 19:32	IT	GEWC / 9664 [182339]
Parameter				Result	RDL	Units
Total Organic Carbon				1.59	0.14	mg/L

WET CHEMISTRY - SM2320B

Prep Date	Prep Batch	Prep Method	Dilution	Analyzed	By	Analytical Batch
			1	06/21/03 9:51	FZ	GEWC / 9807 [184669]
Parameter				Result	RDL	Units
Carbonate Alkalinity				2U	2	mg/L as CaCO3

Prep Date	Prep Batch	Prep Method	Dilution	Analyzed	By	Analytical Batch
			1	06/21/03 9:51	GS	GEWC / 9665 [182340]
Parameter				Result	RDL	Units
Alkalinity				115	2	mg/L as CaCO3

Certificate of Analysis

WET CHEMISTRY - SM2320B

Prep Date	Prep Batch	Prep Method	Dilution	Analyzed	By	Analytical Batch
			1	06/21/03 9:51	GS	GEWC / 9695 [182675]
Parameter				Result	RDL	Units
Bicarbonate Alkalinity				115	2	mg/L as CaCO3

METALS - EPA 200.7

Prep Date	Prep Batch	Prep Method	Dilution	Analyzed	By	Analytical Batch
			1	06/24/03 9:56	JH	ICAP / 1750 [182990]
Parameter				Result	RDL	Units
Calcium				35	0.1	mg/L
Magnesium				8.9	0.005	mg/L
Potassium				0.58	0.089	mg/L

Prep Date	Prep Batch	Prep Method	Dilution	Analyzed	By	Analytical Batch
			1	06/24/03 9:56	JH	ICAP / 1750 [182990]
Parameter				Result	RDL	Units
Sodium				3.8	0.044	mg/L

WET CHEMISTRY - EPA 370.1

Prep Date	Prep Batch	Prep Method	Dilution	Analyzed	By	Analytical Batch
			1	06/24/03 11:14	GS	GEWC / 9704 [182717]
Parameter				Result	RDL	Units
Dissolved Silica				10.8	0.04	mg/L

WET CHEMISTRY - EPA 300.0

Prep Date	Prep Batch	Prep Method	Dilution	Analyzed	By	Analytical Batch
			1	06/20/03 0:56	IT	IONC / 1203 [182585]
Parameter				Result	RDL	Units
Sulfate				8.61	0.04	mg/L

Prep Date	Prep Batch	Prep Method	Dilution	Analyzed	By	Analytical Batch
			1	06/20/03 0:56	IT	IONC / 1198 [182580]
Parameter				Result	RDL	Units
Chloride				7.16	0.03	mg/L

Prep Date	Prep Batch	Prep Method	Dilution	Analyzed	By	Analytical Batch
			1	06/20/03 0:56	IT	IONC / 1201 [182583]
Parameter				Result	RDL	Units
Fluoride				0.119	0.02	mg/L

Orange County Utilities Central Laboratory
9124 Curry Ford Road
Orlando, FL 32825
(407) 836-6950
NELAP ID#: E53398

Certificate of Analysis

Bicarbonate 140 mg/L as HCO₃

Certificate of Analysis

QC Summary

Prep Batch:

DUP 197916	Original Lab ID O30622521	Matrix Wastewater	Analytical Batch GEWC / 9645 [182272]			
EPA 150.1	<i>Recovery</i>	<i>% Dup Rec</i>	<i>Rec Limits</i>	<i>RPD</i>	<i>RPD Limits</i>	
pH				0	0 - 20	
pH				0	0 - 20	
DUP 198143	Original Lab ID O30622901	Matrix Drinking Water	Analytical Batch GEWC / 9661 [182309]			
EPA 120.1	<i>Recovery</i>	<i>% Dup Rec</i>	<i>Rec Limits</i>	<i>RPD</i>	<i>RPD Limits</i>	
Conductivity				0.38	0 - 20	
DUP 198329	Original Lab ID O30621303	Matrix Drinking Water	Analytical Batch GEWC / 9664 [182339]			
SM5310C	<i>Recovery</i>	<i>% Dup Rec</i>	<i>Rec Limits</i>	<i>RPD</i>	<i>RPD Limits</i>	
Total Organic Carbon				1	0 - 20	
Total Organic Carbon				2	0 - 20	
MS Lab ID: 198330 MSD Lab ID: 198331	Original Lab ID O30622603	Matrix Drinking Water	Analytical Batch GEWC / 9664 [182339]			
SM5310C	<i>Recovery</i>	<i>% Dup Rec</i>	<i>Rec Limits</i>	<i>RPD</i>	<i>RPD Limits</i>	
Total Organic Carbon	102	106	80 - 120	4	0 - 20	
MS Lab ID: 198334 MSD Lab ID: 198335	Original Lab ID O30622901	Matrix Drinking Water	Analytical Batch GEWC / 9664 [182339]			
SM5310C	<i>Recovery</i>	<i>% Dup Rec</i>	<i>Rec Limits</i>	<i>RPD</i>	<i>RPD Limits</i>	
Total Organic Carbon	107	106	80 - 120	0.94	0 - 20	
MS Lab ID: 198396 MSD Lab ID: 198397	Original Lab ID O30622901	Matrix Drinking Water	Analytical Batch GEWC / 9665 [182340]			
SM2320B	<i>Recovery</i>	<i>% Dup Rec</i>	<i>Rec Limits</i>	<i>RPD</i>	<i>RPD Limits</i>	
Alkalinity	87	83	80 - 120	5	0 - 20	
DUP 198776	Original Lab ID O30625401	Matrix Surface Water	Analytical Batch GEWC / 9686 [182586]			
EPA 160.1	<i>Recovery</i>	<i>% Dup Rec</i>	<i>Rec Limits</i>	<i>RPD</i>	<i>RPD Limits</i>	
Total Dissolved Solids				0	0 - 20	
MS Lab ID: 198869 MSD Lab ID: 198870	Original Lab ID O30622901	Matrix Drinking Water	Analytical Batch GEWC / 9695 [182675]			
SM2320B	<i>Recovery</i>	<i>% Dup Rec</i>	<i>Rec Limits</i>	<i>RPD</i>	<i>RPD Limits</i>	
Bicarbonate Alkalinity	87	83	80 - 120	5	0 - 20	
MS Lab ID: 199575 MSD Lab ID: 199576	Original Lab ID O30621302	Matrix Drinking Water	Analytical Batch GEWC / 9704 [182717]			
EPA 370.1	<i>Recovery</i>	<i>% Dup Rec</i>	<i>Rec Limits</i>	<i>RPD</i>	<i>RPD Limits</i>	
Dissolved Silica	96	100	80 - 120	4	0 - 20	

Certificate of Analysis

MS Lab ID: 199578	Original Lab ID	Matrix	Analytical Batch
MSD Lab ID: 199579	O30622901	Drinking Water	GEWC / 9704 [182717]
EPA 370.1	<i>Recovery</i>	<i>% Dup Rec</i>	<i>Rec Limits</i>
Dissolved Silica	104	102	80 - 120
			<i>RPD</i>
			2
			<i>RPD Limits</i>
			0 - 20
MS Lab ID: 199480	Original Lab ID	Matrix	Analytical Batch
	O30621201	Drinking Water	ICAP / 1750 [182990]
EPA 200.7	<i>Recovery</i>	<i>% Dup Rec</i>	<i>Rec Limits</i>
Calcium	87		80 - 120
Magnesium	102		80 - 120
Potassium	100		80 - 120
Sodium	108		80 - 120
DUP	Original Lab ID	Matrix	Analytical Batch
198746	O30622901	Drinking Water	IONC / 1198 [182580]
EPA 300.0	<i>Recovery</i>	<i>% Dup Rec</i>	<i>Rec Limits</i>
Chloride			80 - 120
			<i>RPD</i>
			0.04
			<i>RPD Limits</i>
			0 - 20
MS Lab ID: 198746	Original Lab ID	Matrix	Analytical Batch
	O30622901	Drinking Water	IONC / 1198 [182580]
EPA 300.0	<i>Recovery</i>	<i>% Dup Rec</i>	<i>Rec Limits</i>
Chloride	113		80 - 120
DUP	Original Lab ID	Matrix	Analytical Batch
198763	O30622901	Drinking Water	IONC / 1201 [182583]
EPA 300.0	<i>Recovery</i>	<i>% Dup Rec</i>	<i>Rec Limits</i>
Fluoride			80 - 120
			<i>RPD</i>
			0.5
			<i>RPD Limits</i>
			0 - 20
MS Lab ID: 199318	Original Lab ID	Matrix	Analytical Batch
	O30622901	Drinking Water	IONC / 1201 [182583]
EPA 300.0	<i>Recovery</i>	<i>% Dup Rec</i>	<i>Rec Limits</i>
Fluoride	117		80 - 120
DUP	Original Lab ID	Matrix	Analytical Batch
197908	O30622901	Drinking Water	IONC / 1203 [182585]
EPA 300.0	<i>Recovery</i>	<i>% Dup Rec</i>	<i>Rec Limits</i>
Sulfate			80 - 120
			<i>RPD</i>
			0.97
			<i>RPD Limits</i>
			0 - 20
MS Lab ID: 197909	Original Lab ID	Matrix	Analytical Batch
	O30622901	Drinking Water	IONC / 1203 [182585]
EPA 300.0	<i>Recovery</i>	<i>% Dup Rec</i>	<i>Rec Limits</i>
Sulfate	80		80 - 120

ORANGE COUNTY UTILITIES LABORATORIES

4760 Sand Lake Road
Orlando, Florida 32819
Phone: (407) 352-4310
Fax: (407) 352-4338

1621 S. Alafaya Trail
Orlando, Florida 32828
Phone: (407) 249-6251
Fax: (407) 658-2711

CHAIN OF CUSTODY RECORD AND ANALYSIS REQUEST 4669

CLIENT NAME <i>EMILY SWEAZY</i>			P.O. NUMBER <i>SFLMID</i>			GRAB (G) / COMPOSITE (C)			MATRIX			<input type="checkbox"/> STANDARD TAT <input type="checkbox"/> EXPEDITED TAT REPORT DUE DATE: _____ REMARKS: _____ _____ _____			
CLIENT ADDRESS <i>1707 ORLANDO CENTRAL PKW</i>			CLIENT PROJECT MANAGER <i>EMILY SWEAZY</i>			AQUEOUS SOLID OIL	GENERALS METAL NUTRIENTS VOA SEMVOLATILES ORGANICS (PESTS /HERBS) CYANIDE PHENOL BACTERIA GREASE AND OIL OTHER OTHER	CITY, STATE, ZIP <i>ORLANDO FL 32809</i>			PROJECT NUMBER				
SAMPLER(S) NAME(S) <i>Ed Reckward</i>			PROJECT NAME <i>RCID TEST W/CA</i>					NUMBER OF SAMPLE CONTAINERS SUBMITTED			LAB SAMPLE I.D.				
STATION NO.	SAMPLING		STATION/SITE IDENTIFICATION												
	DATE	TIME													
<i>1</i>	<i>6/19</i>	<i>10:49</i>	<i>RCID TEST W/CA</i>			<input checked="" type="checkbox"/>			<input checked="" type="checkbox"/>	<input checked="" type="checkbox"/>			<i>16</i>	<i>D30622901</i>	
1. RELINQUISHED BY: (SIGNATURE)			DATE	TIME	3. RELINQUISHED BY: (SIGNATURE)			DATE	TIME	5. RELINQUISHED BY: (SIGNATURE)			DATE	TIME	
2. RECEIVED BY: (SIGNATURE)			DATE	TIME	4. RECEIVED BY: (SIGNATURE)			DATE	TIME	6. RECEIVED BY: (SIGNATURE)			DATE	TIME	
FOR LABORATORY USE ONLY															
RECEIVED IN LABORATORY BY: (SIGNATURE)			DATE	TIME	CONTAINERS INTACT			FILE CHECKED IN LAB			SAMPLE CONTAINERS PREPARED BY:			DATE	TIME
<i>Ed Reckward</i>			<i>6/19/03</i>	<i>12:05</i>	<input checked="" type="checkbox"/> YES <input type="checkbox"/> NO			<input checked="" type="checkbox"/> YES <input type="checkbox"/> NO							
LABORATORY REMARKS			<i>4-30-02 HWS 2</i>			TEMP °C			SAMPLE CONTAINERS CHECKED BY:			DATE	TIME		
						<i>7.1</i>									

... (Lab). Temp ...

ANALYTICAL RESULTS

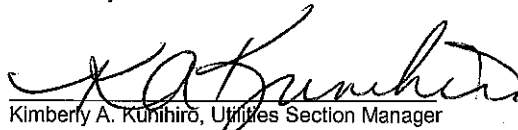
Report Date: 07/10/03

Work Order: O306277

Deliver To: Chris Sweazy
South Florida Water Mgmt. Dist
1707 Orlando Central Parkway
Suite 200
Orlando, FL 32809

NOTE: This document is included as part of the Analytical Report for the above referenced Laboratory Workorder ID and should be retained as a permanent record thereof. The results contained in this report meet all requirements of the National Environmental Laboratory Accreditation Conference (NELAC) Standards.

Certified By:


Kimberly A. Kunihiro, Utilities Section Manager

Certificate of Analysis

<i>Client</i>	<i>Workorder</i>	<i>Work ID</i>
S Florida Water Mgmt District	O306277 [9777]	RCID Test Well 062503

Workorder Sample Summary

<i>Lab ID</i>	<i>Sample ID</i>	<i>Matrix</i>	<i>Collect Date/Time</i>	<i>Receive Date/Time</i>
O30627701	FMW-Packer 2	Drinking Water	06/25/03 10:30	06/25/03 11:30

Certificate of Analysis

Lab ID	Sample ID	Collected	Received	Reported	Matrix
O30627701	FMW-Packer 2	06/25/03 10:30	06/25/03 11:30	07/10/03 10:14	Drinking Water
(Results reported on a wet weight basis)					

WET CHEMISTRY - EPA 160.1

Prep Date	Prep Batch	Prep Method	Dilution	Analyzed	By	Analytical Batch
			1	06/27/03 9:09	AF	GEWC / 9734 [183089]
Parameter				Result	RDL	Units
Total Dissolved Solids				158	1	mg/L

WET CHEMISTRY - EPA 160.1

Prep Date	Prep Batch	Prep Method	Dilution	Analyzed	By	Analytical Batch
			1	06/25/03 13:30	FZ	GEWC / 9736 [183096]
Parameter				Result	RDL	Units
pH				7.71	0.01	SU

WET CHEMISTRY - EPA 120.1

Prep Date	Prep Batch	Prep Method	Dilution	Analyzed	By	Analytical Batch
			1	06/25/03 13:40	FZ	GEWC / 9735 [183095]
Parameter				Result	RDL	Units
Conductivity				260	1	umhos/cm

WET CHEMISTRY - EPA 170.1

Prep Date	Prep Batch	Prep Method	Dilution	Analyzed	By	Analytical Batch
			1	06/25/03 15:45	FZ	GEWC / 9822 [184871]
Parameter				Result	RDL	Units
Temperature				7.1	0.1	Degrees C

WET CHEMISTRY - SM5310C

Prep Date	Prep Batch	Prep Method	Dilution	Analyzed	By	Analytical Batch
			1	06/25/03 14:49	IT	GEWC / 9712 [182885]
Parameter				Result	RDL	Units
Total Organic Carbon				0.97	0.14	mg/L

WET CHEMISTRY - SM2320B

Prep Date	Prep Batch	Prep Method	Dilution	Analyzed	By	Analytical Batch
			1	06/25/03 15:45	FZ	GEWC / 9737 [183097]
Parameter				Result	RDL	Units
Alkalinity				114	2	mg/L as CaCO3

Prep Date	Prep Batch	Prep Method	Dilution	Analyzed	By	Analytical Batch
			1	06/25/03 15:45	FZ	GEWC / 9742 [183171]
Parameter				Result	RDL	Units
Carbonate Alkalinity				2U	2	mg/L as CaCO3

Certificate of Analysis

WET CHEMISTRY - SM2320B

Prep Date	Prep Batch	Prep Method	Dilution	Analyzed	By	Analytical Batch
			1	06/25/03 15:45	FZ	GEWC / 9738 [183098]
Parameter				Result	RDL	Units
Bicarbonate Alkalinity				114	2	mg/L as CaCO3

METALS - EPA 200.7

Prep Date	Prep Batch	Prep Method	Dilution	Analyzed	By	Analytical Batch
			1	06/27/03 9:29	JH	ICAP / 1759 [183678]
Parameter				Result	RDL	Units
Calcium				34	0.1	mg/L
Magnesium				10	0.02	mg/L
Potassium				0.75	0.356	mg/L

Prep Date	Prep Batch	Prep Method	Dilution	Analyzed	By	Analytical Batch
			1	06/27/03 9:29	JH	ICAP / 1759 [183678]
Parameter				Result	RDL	Units
Sodium				3.9	0.176	mg/L

WET CHEMISTRY - EPA 370.1

Prep Date	Prep Batch	Prep Method	Dilution	Analyzed	By	Analytical Batch
			1	06/27/03 8:58	GS	GEWC / 9753 [183290]
Parameter				Result	RDL	Units
Dissolved Silica				12.4	0.04	mg/L

WET CHEMISTRY - EPA 300.0

Prep Date	Prep Batch	Prep Method	Dilution	Analyzed	By	Analytical Batch
			1	07/01/03 10:45	IT	IONC / 1208 [183281]
Parameter				Result	RDL	Units
Chloride				4.90	0.12	mg/L

Prep Date	Prep Batch	Prep Method	Dilution	Analyzed	By	Analytical Batch
			1	07/01/03 10:45	IT	IONC / 1209 [183282]
Parameter				Result	RDL	Units
Fluoride				0.111	0.08	mg/L

Prep Date	Prep Batch	Prep Method	Dilution	Analyzed	By	Analytical Batch
			1	07/01/03 10:45	IT	IONC / 1207 [183074]
Parameter				Result	RDL	Units
Sulfate				22.2	0.16	mg/L

Certificate of Analysis

QC Summary

Prep Batch:

DUP	Original Lab ID	Matrix	Analytical Batch
199186	O30625401	Surface Water	GEWC / 9712 [182885]

SM5310C	Recovery	% Dup Rec	Rec Limits	RPD	RPD Limits
Total Organic Carbon				2	0 - 20

MS Lab ID: 200513	Original Lab ID	Matrix	Analytical Batch
MSD Lab ID: 200514	O30627701	Drinking Water	GEWC / 9712 [182885]

SM5310C	Recovery	% Dup Rec	Rec Limits	RPD	RPD Limits
Total Organic Carbon	102	103	80 - 120	0.98	0 - 20

DUP	Original Lab ID	Matrix	Analytical Batch
199572	O30626603	Drinking Water	GEWC / 9734 [183089]

EPA 160.1	Recovery	% Dup Rec	Rec Limits	RPD	RPD Limits
Total Dissolved Solids				2	0 - 20

DUP	Original Lab ID	Matrix	Analytical Batch
199613	O30627701	Drinking Water	GEWC / 9735 [183095]

EPA 120.1	Recovery	% Dup Rec	Rec Limits	RPD	RPD Limits
Conductivity				0	0 - 20

DUP	Original Lab ID	Matrix	Analytical Batch
199617	O30627701	Drinking Water	GEWC / 9736 [183096]

EPA 150.1	Recovery	% Dup Rec	Rec Limits	RPD	RPD Limits
pH				0	0 - 20

MS Lab ID: 199621	Original Lab ID	Matrix	Analytical Batch
MSD Lab ID: 199622	O30627701	Drinking Water	GEWC / 9737 [183097]

SM2320B	Recovery	% Dup Rec	Rec Limits	RPD	RPD Limits
Alkalinity	99	98	80 - 120	1	0 - 20

MS Lab ID: 199627	Original Lab ID	Matrix	Analytical Batch
MSD Lab ID: 199628	O30627701	Drinking Water	GEWC / 9738 [183098]

SM2320B	Recovery	% Dup Rec	Rec Limits	RPD	RPD Limits
Bicarbonate Alkalinity	99	98	80 - 120	1	0 - 20

MS Lab ID: 200019	Original Lab ID	Matrix	Analytical Batch
MSD Lab ID: 200020	O30627701	Drinking Water	GEWC / 9753 [183290]

EPA 370.1	Recovery	% Dup Rec	Rec Limits	RPD	RPD Limits
Dissolved Silica	104	102	80 - 120	2	0 - 20

DUP	Original Lab ID	Matrix	Analytical Batch
200364	O30627701	Drinking Water	ICAP / 1759 [183678]

EPA 200.7	Recovery	% Dup Rec	Rec Limits	RPD	RPD Limits
Calcium				0	0 - 20
Magnesium				0	0 - 20
Potassium				1	0 - 20

Certificate of Analysis

Sodium

0 0 - 20

MS Lab ID: 200360	Original Lab ID O30626607	Matrix Drinking Water	Analytical Batch ICAP / 1759 [183678]
-------------------	------------------------------	--------------------------	------------------------------------------

EPA 200.7	Recovery	% Dup Rec	Rec Limits	RPD	RPD Limits
Calcium	62 *		80 - 120		
Magnesium	95		80 - 120		
Potassium	106		80 - 120		
Sodium	95		80 - 120		

MS Lab ID: 200365	Original Lab ID O30627701	Matrix Drinking Water	Analytical Batch ICAP / 1759 [183678]
-------------------	------------------------------	--------------------------	------------------------------------------

EPA 200.7	Recovery	% Dup Rec	Rec Limits	RPD	RPD Limits
Calcium	105		80 - 120		
Magnesium	99		80 - 120		
Potassium	100		80 - 120		
Sodium	96		80 - 120		

DUP 199534	Original Lab ID O30627701	Matrix Drinking Water	Analytical Batch IONC / 1207 [183074]
---------------	------------------------------	--------------------------	------------------------------------------

EPA 300.0	Recovery	% Dup Rec	Rec Limits	RPD	RPD Limits
Sulfate				0.12	0 - 20

MS Lab ID: 199535	Original Lab ID O30627701	Matrix Drinking Water	Analytical Batch IONC / 1207 [183074]
-------------------	------------------------------	--------------------------	------------------------------------------

EPA 300.0	Recovery	% Dup Rec	Rec Limits	RPD	RPD Limits
Sulfate	118		80 - 120		

DUP 199862	Original Lab ID O30627701	Matrix Drinking Water	Analytical Batch IONC / 1208 [183281]
---------------	------------------------------	--------------------------	------------------------------------------

EPA 300.0	Recovery	% Dup Rec	Rec Limits	RPD	RPD Limits
Chloride				2	0 - 20

MS Lab ID: 199863	Original Lab ID O30627701	Matrix Drinking Water	Analytical Batch IONC / 1208 [183281]
-------------------	------------------------------	--------------------------	------------------------------------------

EPA 300.0	Recovery	% Dup Rec	Rec Limits	RPD	RPD Limits
Chloride	115		80 - 120		

DUP 199868	Original Lab ID O30627701	Matrix Drinking Water	Analytical Batch IONC / 1209 [183282]
---------------	------------------------------	--------------------------	------------------------------------------

EPA 300.0	Recovery	% Dup Rec	Rec Limits	RPD	RPD Limits
Fluoride				0	0 - 20

MS Lab ID: 199869	Original Lab ID O30627701	Matrix Drinking Water	Analytical Batch IONC / 1209 [183282]
-------------------	------------------------------	--------------------------	------------------------------------------

EPA 300.0	Recovery	% Dup Rec	Rec Limits	RPD	RPD Limits
Fluoride	112		80 - 120		

ORANGE COUNTY UTILITIES LABORATORIES

4711 and Lake Road
Orlando, Florida 32819
Phone: (407) 352-4310
Fax: (407) 352-4338

1621 S. Alafaya Trail
Orlando, Florida 32828
Phone: (407) 249-6251
Fax: (407) 658-2711

CHAIN OF CUSTODY RECORD AND ANALYSIS REQUEST 4670

CLIENT NAME SFWMD			P.O. NUMBER			MATRIX			<input type="checkbox"/> STANDARD TAT <input type="checkbox"/> EXPEDITED TAT REPORT DUE DATE: _____ REMARKS: _____ _____ _____ _____							
CLIENT ADDRESS 1707 ORLANDO COMPANY			CLIENT PROJECT MANAGER CHRIS SWEAZY			GRAB (G) / COMPOSITE (C)										
CITY, STATE, ZIP ORLANDO, 32809			PROJECT NUMBER 1			AQUEOUS SOLID OIL										
SAMPLER(S) NAME(S) Ed Keltzwald			PROJECT NAME KCID TEST WELL			GENERALS METAL NUTRIENTS VOA SEMIVOLATILES ORGANICS (PESTS / HERBS) CYANIDE PHENOL BACTERIA GREASE AND OIL OTHER OTHER										
STATION NO.	SAMPLING DATE TIME		STATION/SITE IDENTIFICATION			NUMBER OF SAMPLE CONTAINERS SUBMITTED								LAB SAMPLE ID		
1	6/25 10:30		FMW-Tracker 2 (450-1540)			<input checked="" type="checkbox"/>	<input checked="" type="checkbox"/>									030627701
See Kim K. for parameters list																
1. RELINQUISHED BY: (SIGNATURE)			DATE	TIME	3. RELINQUISHED BY: (SIGNATURE)			DATE	TIME	5. RELINQUISHED BY: (SIGNATURE)			DATE	TIME		
			6/25	11:30												
2. RECEIVED BY: (SIGNATURE)			DATE	TIME	4. RECEIVED BY: (SIGNATURE)			DATE	TIME	6. RECEIVED BY: (SIGNATURE)			DATE	TIME		
			6/25	11:30												
FOR LABORATORY USE ONLY																
RECEIVED IN LABORATORY BY: (SIGNATURE)			DATE	TIME	CONTAINERS INTACT		PH CHECKED IN LAB?		SAMPLE CONTAINERS PREPARED BY:			DATE	TIME			
					<input type="checkbox"/> YES <input type="checkbox"/> NO	<input type="checkbox"/> YES <input type="checkbox"/> NO	<input type="checkbox"/> YES <input type="checkbox"/> NO									
LABORATORY REMARKS:							TEMP °C	SAMPLE CONTAINERS CHECKED BY:			DATE	TIME				

DIVERSIFIED DRILLING CORPORATION DAILY DRILLING REPORT

DATE: 3-11-03 PROJECT: Reedy Creek
 WELL NAME/DIA: _____ JOB NUMBER: # 2077

WELL DEPTH - START OF SHIFT: 0 WATER LEVEL - START OF SHIFT: 1140
 END OF SHIFT: 103' END OF SHIFT: _____

FORMATION	FROM	TO
-----------	------	----

Drilled 12 1/4" Pilot Hole FROM SURFACE TO 103'.
 CAUGHT 5' SAMPLES Pulled out of Hole RAN IN Hole
 WITH 29" DRUMMER DRILLED FROM SURFACE TO 103'. Circulated
 Hole Clean Pulled out of Hole. RAN 24" CASING 1/2" WALL
 THICKNESS TO 89'. Hole HAD Filled IN 14'. RAN TRIM
 Pipe 2 7/8" CEMENTED WITH 185 SACKS Neat Cement.
 Pulled TRIM Pipe.

Total cement for P. + casing = 240 SKS. x 1.18 = 28843

740 SKS. x 1.18 = 8732

ACCIDENT ON SITE? YES _____ NO <u>✓</u> DESCRIBE: _____ _____ _____ _____	WEATHER CONDITIONS: <u>Clear</u> DRILLING MUD USED: <u>25</u> WGT.: <u>9.7</u> VISCOSITY: <u>34</u> SPECIAL CONDITIONS/COMMENTS: _____ _____
DRILLER: <u>BRUCE HARMAN</u> OWNER/ENG REP: _____	HELPERS: <u>JEFF, CRAIG</u>

DIVERSIFIED DRILLING CORPORATION DAILY DRILLING REPORT

DATE: <u>3-12-03</u>	PROJECT: <u>Reedy Creek</u>
WELL NAME/DIA: _____	JOB NUMBER: <u>#2077</u>

WELL DEPTH - START OF SHIFT: <u>103'</u>	WATER LEVEL - START OF SHIFT: <u>MUD</u>
END OF SHIFT: _____	END OF SHIFT: _____

FORMATION	FROM	TO
-----------	------	----

RAN TRIM PIPE DOWN ANNULUS TAPPED CEMENT AT
 32' CEMENTED WITH 55 BAGS NEET CEMENT. PULLED
 TRIM PIPE CUT OFF CASING. WORKED ON EGYPT. CLEANED
 UP TANKS & LOCATION.

ACCIDENT ON SITE? YES ___ NO <input checked="" type="checkbox"/>	WEATHER CONDITIONS: <u>Clear</u>
DESCRIBE: _____	DRILLING MUD USED: _____ WGT.: _____ VISCOSITY: _____
_____	SPECIAL CONDITIONS/COMMENTS: _____
DRILLER: <u>BRUCE HARMAN</u>	HELPERS: <u>CRAIG, JEFF</u>
OWNER/ENG REP: _____	

DIVERSIFIED DRILLING CORPORATION DAILY DRILLING REPORT

DATE: 3-13-03 PROJECT: Steady Creek
WELL NAME/DIA: _____ JOB NUMBER: # 2077

WELL DEPTH - START OF SHIFT: 84' WATER LEVEL - START OF SHIFT: MUD
END OF SHIFT: 250' END OF SHIFT: _____

FORMATION	FROM	TO
-----------	------	----

RAN IN Hole WITH 22" REAMER DRILLED OUT CEMENT FROM 84' TO 89' PULLED OUT OF Hole, RAN IN Hole WITH 9 7/8" BIT DRILLED PILOT Hole FROM 89' TO 250'. CIRCULATED Hole clean. PULLED BIT UP INTO CASING. SHUT DOWN.

ACCIDENT ON SITE? YES ___ NO <u>✓</u> DESCRIBE: _____	WEATHER CONDITIONS: <u>clear</u>
	DRILLING MUD USED: <u>4</u> WGT. <u>9.1</u> VISCOSITY: <u>34</u>
	SPECIAL CONDITIONS/COMMENTS:
DRILLER: <u>BRUCE HARMAN</u>	HELPERS: <u>CRATZ, JEFF</u>
OWNER/ENG REP:	

DIVERSIFIED DRILLING CORPORATION DAILY DRILLING REPORT

DATE: <u>3-17-03</u>	PROJECT: <u>Ready Creek</u>
WELL NAME/DIA:	JOB NUMBER: <u>2077</u>

WELL DEPTH - START OF SHIFT: <u>250'</u> END OF SHIFT: _____	WATER LEVEL - START OF SHIFT: <u>MUD</u> END OF SHIFT: _____
-----------------------------------------------------------------	-----------------------------------------------------------------

FORMATION	FROM	TO
-----------	------	----

*RAN IN Hole WITH BIT CIRCULATED Hole Pulled OUT FOR
LOGS. RIGGED UP better. Logged well RIGGED DOWN
LATER. RAN IN Hole WITH 28" BEAMA DRILLED TO 123'
LOST CIRCULATION. Pulled UP INTO CASING. STARTED RIGGING
UP FOR Reverse AIR.*

ACCIDENT ON SITE? YES _____ NO <u>✓</u>	WEATHER CONDITIONS: <u>Clear</u>
DESCRIBE: _____	DRILLING MUD USED: _____ WGT.: _____ VISCOSITY: _____
OWNER/ENG REP: _____	SPECIAL CONDITIONS/COMMENTS: _____
DRILLER: <u>BRUCE HARMAN</u>	HELPERS: <u>JEFF, CRAIG</u>

DIVERSIFIED DRILLING CORPORATION DAILY DRILLING REPORT

DATE: <u>3-18-03</u>	PROJECT: <u>Reedy Creek</u>
WELL NAME/DIA:	JOB NUMBER: <u>7077</u>

WELL DEPTH - START OF SHIFT: 123' WATER LEVEL - START OF SHIFT: _____
 END OF SHIFT: _____ END OF SHIFT: _____

FORMATION	FROM	TO
-----------	------	----

RITTING UP FOR REVERSE AIR. CLEANED MUD
OUT OF Hole.

ACCIDENT ON SITE? YES _____ NO <input checked="" type="checkbox"/>	WEATHER CONDITIONS: <u>CLEAR</u>
DESCRIBE:	DRILLING MUD USED: WGT.: VISCOSITY:
	SPECIAL CONDITIONS/COMMENTS:
DRILLER: <u>BRUCE HARMAN</u>	HELPERS: <u>JEFF & CRAIG</u>
OWNER/ENG REP:	

DIVERSIFIED DRILLING CORPORATION DAILY DRILLING REPORT

DATE: <u>3-19-03</u>	PROJECT: <u>Reedy Creek</u>
WELL NAME/DIA:	JOB NUMBER: <u>2077</u>

WELL DEPTH - START OF SHIFT: <u>123'</u>	WATER LEVEL - START OF SHIFT: <u>12'</u>
END OF SHIFT: <u>156'</u>	END OF SHIFT: _____

FORMATION	FROM	TO
-----------	------	----

Cleaned Hole WITH AIR. Vacuum TRUCK Hauled OFF
Drilling mud. Drilled TO 156' Start DOWN.

ACCIDENT ON SITE? YES <input type="checkbox"/> NO <input checked="" type="checkbox"/>	WEATHER CONDITIONS: <u>Clear</u>
DESCRIBE:	DRILLING MUD USED: _____ WGT.: _____ VISCOSITY: <u>AIR</u>
	SPECIAL CONDITIONS/COMMENTS:
DRILLER: <u>BRUCE HARMAN</u>	HELPERS: <u>JEFF, CRAIG</u>
OWNER/ENG REP:	

DIVERSIFIED DRILLING CORPORATION DAILY DRILLING REPORT

DATE: <u>3-20-03</u>	PROJECT: <u>2077 Runny Creek</u>
WELL NAME/DIA:	JOB NUMBER: <u>2077</u>

WELL DEPTH - START OF SHIFT: 156'
 END OF SHIFT: 226'

WATER LEVEL - START OF SHIFT: 12'
 END OF SHIFT: _____

FORMATION	FROM	TO
-----------	------	----

Drilled 22" Hole AIR Reverse FROM 156' to 226'

Pulled out of hole, Ripped up motor, Logged well,

- RAN CASING AS Follows:
1. 25.1 H.N. 42962 LK 69919
 2. 40.1 H.N. X 42960 LK 69918
 3. 40.1 H.N. X 42960 LK 69904
 4. 40.15 H.N. X 42958 LK 69905
 5. 40.40 H.N. X 42962 LK 69904
 6. 40.15 H.N. A 42960 LK 69902

RAN 220 Feet OF CASING FROM GROUND level. TOTAL OF
227' WITH HEADER. RAN 2 7/8" TRIM PIPE TO 219' CEMENTED
WITH 300 SACKS NET CEMENT. PARTIAL CIRCULATION DURING
CEMENT JOB. Pulled TRIM PIPE 3.5 HOURS LATER.

ACCIDENT ON SITE? YES _____ NO <input checked="" type="checkbox"/>	WEATHER CONDITIONS: <u>Clear</u>
DESCRIBE: _____	DRILLING MUD USED: _____ WGT.: _____ VISCOSITY: <u>AIR</u>
_____	SPECIAL CONDITIONS/COMMENTS: _____
DRILLER: <u>BRUCE HARMAN</u>	HELPERS: <u>JEFF, CRAIG</u>
OWNER/ENG REP: _____	_____

DIVERSIFIED DRILLING CORPORATION DAILY DRILLING REPORT

Energy Service

DATE: <u>3-20-03</u>	PROJECT: <u>Reedy Creek</u>
WELL NAME/DIA: _____	JOB NUMBER: <u>2077</u>

WELL DEPTH – START OF SHIFT: _____	WATER LEVEL – START OF SHIFT: _____
END OF SHIFT: _____	END OF SHIFT: _____

FORMATION	FROM	TO
-----------	------	----

Time	Depth	Temp	IBV	SPC	PH
<u>4.30</u>	<u>156.13 125.68</u>	<u>24.16</u>	<u>8.2</u>	<u>134.0</u>	<u>9.68</u>
<u>6:00</u>	<u>156.13</u>	<u>24.28</u>	<u>8.2</u>	<u>121.2</u>	<u>9.79</u>

ACCIDENT ON SITE? YES <input type="checkbox"/> NO <input type="checkbox"/> DESCRIBE: <u>Reedy Creek</u> <u>Energy Services</u> <u>Test well</u>	WEATHER CONDITIONS: DRILLING MUD USED: _____ WGT.: _____ VISCOSITY: _____ SPECIAL CONDITIONS/COMMENTS:
MILLER: OWNER/ENG REP:	HELPERS:

PUMPING PROJECT WORKSHEET

PROJECT NAME: <u>Reedy Creek</u>	DATE: <u>3-20-03</u>
JOB NUMBER: <u># 2077</u>	PUMPER: <u>Rambo/Apie</u>
WELL NUMBER:	DRILLER: <u>Bruce Harmon</u>
OWNER:	WEATHER CONDITIONS:
CONSULTANT:	
TASK: <u>18" Csg.</u>	KNOWN FACTORS:
<u>Cement 220' x 18" Csg. in a 23" hole</u>	<u>23" hole @ 222'</u>
	<u>18" Csg. @ 220' / 228' header</u>
	<u>2 3/4" flg. @ 220'</u>

CALCULATIONS & SKETCH:

$$\begin{aligned}
 23'' &= 2.8852 \text{ Ft}^3/\text{ft.} \\
 18'' &= 1.7671 \text{ ''} \\
 & \quad 1.1181 \text{ Ft}^3/\text{ft.} \\
 & \quad \times 220' \\
 & \quad \hline
 & \quad 246 \text{ Ft}^3 \\
 & \quad \div 1.18 \text{ Ft}^3/\text{sk} \\
 & \quad \hline
 & \quad 208 \text{ sks (Theoretical)}
 \end{aligned}$$

OPERATION SEQUENCE:

<u>3-20-03 Pump 300 sks @ 5 1/2 RPM / disp. w/ 130 gal. F/w</u>	<u>Stage I</u>
<u>3-21-03 Pump 125 sks @ (105' tag)</u>	<u>Stage II</u>
	<u>End Job</u>

POST JOB SUMMARY:

Cement Used: (425 sks)

DIVERSIFIED DRILLING CORPORATION DAILY DRILLING REPORT

DATE: <u>3-21-03</u>	PROJECT: <u>Reedy Creek</u>
WELL NAME/DIA:	JOB NUMBER: <u>2077</u>

WELL DEPTH - START OF SHIFT: 226'
 END OF SHIFT: _____

WATER LEVEL - START OF SHIFT: 12'
 END OF SHIFT: _____

FORMATION	FROM	TO
-----------	------	----

RAW TRIM PIPE 1 1/4" IN ANNULAS. TAPPED CEMENT AT 105'.
 CEMENTED WITH 125 SACKS NEET CEMENT, GOT CEMENT TO
 SURFACE. PULLED TRIM PIPE.

ACCIDENT ON SITE? YES _____ NO <input checked="" type="checkbox"/>	WEATHER CONDITIONS: <u>RAIN</u>
DESCRIBE: _____	DRILLING MUD USED: _____ WGT.: _____ VISCOSITY: <u>HR</u>
_____	SPECIAL CONDITIONS/COMMENTS: _____
OPERATOR: <u>BRUCE HARMAN</u>	HELPERS: <u>JEFF, CRAIG</u>
OWNER/ENG REP: _____	_____

DIVERSIFIED DRILLING CORPORATION

DAILY DRILLING REPORT

DATE: <u>3-21-03</u>	PROJECT: <u>Reedy Creek</u>
WELL NAME/DIA: <u>Test well</u>	JOB NUMBER: <u>2077</u>

WELL DEPTH - START OF SHIFT: _____
 END OF SHIFT: _____

WATER LEVEL - START OF SHIFT: _____
 END OF SHIFT: _____

FORMATION	FROM	TO			
Time	Depth	IBV	Temp	SpG	PH
<u>9:15A</u>	<u>182.73</u>	<u>8.1</u>	<u>27.30</u>	<u>1015</u>	<u>11.38</u>
<u>10:15A</u>	<u>219.23</u>	<u>8.1</u>	<u>28.92</u>	<u>1182</u>	<u>11.43</u>
<u>10:45</u>	<u>226.23</u> ^{TD}	<u>8.1</u>	<u>27.69</u>	<u>1245</u>	<u>11.46</u>
<u>226.23 TD for 2nd string casing</u>					

ACCIDENT ON SITE? YES <input type="checkbox"/> NO <input type="checkbox"/> DESCRIBE: _____	WEATHER CONDITIONS: DRILLING MUD USED: WGT.: VISCOSITY:
OWNER/ENG REP:	SPECIAL CONDITIONS/COMMENTS: _____ _____ HELPERS: <i>Craig Turner</i>

DIVERSIFIED DRILLING CORPORATION DAILY DRILLING REPORT

DATE: 3-24-03 PROJECT: Reed Creek
 WELL NAME/DIA: _____ JOB NUMBER: 2077

WELL DEPTH - START OF SHIFT: 194' WATER LEVEL - START OF SHIFT: AIR
 END OF SHIFT: 250' END OF SHIFT: _____

FORMATION	FROM	TO
-----------	------	----

Drilled cement from 194' to 250'

ACCIDENT ON SITE? YES _____ NO <input checked="" type="checkbox"/>	WEATHER CONDITIONS: <u>Clear</u>
DESCRIBE: _____	DRILLING MUD USED: _____ WGT.: _____ VISCOSITY: _____
_____	SPECIAL CONDITIONS/COMMENTS: _____
MILLER: <u>BRUCE HARMAN</u>	HELPERS: <u>JEFF, CRAIG</u>
OWNER/ENG REP: _____	_____

DIVERSIFIED DRILLING CORPORATION

DAILY DRILLING REPORT

DATE: 3-24-03	PROJECT: Reedy Creek
WELL NAME/DIA: Test Well	JOB NUMBER: 2077

WELL DEPTH – START OF SHIFT: 250.60 WATER LEVEL – START OF SHIFT: _____
 END OF SHIFT: 281.25 END OF SHIFT: _____

FORMATION	FROM	TO
-----------	------	----

Time	Depth.	IBV	Temp	SpC	PH
5:45p	281.25	7.9	25.06	563.8	11.26

ACCIDENT ON SITE? YES <input type="checkbox"/> NO <input type="checkbox"/> DESCRIBE: _____ DRILLER: Bruce Harman OWNER/ENG REP: _____	WEATHER CONDITIONS: _____ DRILLING MUD USED: WGT.: VISCOSITY: SPECIAL CONDITIONS/COMMENTS: HELPERS: Jeff McLeray Craig Turner
------------------------------------------------------------------------------------------------------------------------------------------------------------	------------------------------------------------------------------------------------------------------------------------------------------------------------------------

DIVERSIFIED DRILLING CORPORATION

DAILY DRILLING REPORT

DATE: 3-25-03	PROJECT: Reedy Creek
WELL NAME/DIA: Test well	JOB NUMBER: 2077

WELL DEPTH – START OF SHIFT: 281.25
 END OF SHIFT: 405.30

WATER LEVEL – START OF SHIFT: _____
 END OF SHIFT: _____

FORMATION	FROM	TO
-----------	------	----

Time	Depth	IBV	Temp	SpC	PH
11:15A	312.25	7.9	26.62	56.0	9.34
2:30p	343.20	7.9	24.93	87.4	8.76
3:45p	375.10	7.9	24.98	69.6	8.90
6:20p	405.30	7.9	23.71	204.5	8.71

ACCIDENT ON SITE? YES ___ NO ___ DESCRIBE: 11:30A Repairs ^{To Pipeline} 12:45p restart 4:30p Repairs to Rig 5:45p restart	WEATHER CONDITIONS: DRILLING MUD USED: WGT.: VISCOSITY: SPECIAL CONDITIONS/COMMENTS:
DRILLER: Bruce Harman OWNER/ENG REP:	HELPERS: Craig Turner Jeff McLeray

DIVERSIFIED DRILLING CORPORATION

DAILY DRILLING REPORT

DATE: 3-26-03	PROJECT: Reedy Creek
WELL NAME/DIA: Test well	JOB NUMBER: 2077

WELL DEPTH – START OF SHIFT: 405.30
 END OF SHIFT: 714.33

WATER LEVEL – START OF SHIFT: _____
 END OF SHIFT: _____

FORMATION	FROM	TO
-----------	------	----

Time	Depth	IBV	Temp	SpC	PH
8:30A	437.16	7.9	22.33	207.8	8.64
9:00A	468.98	7.8	22.40	210.5	8.65
9:35A	499.75	7.8	23.31	282.8	8.64
10:05A	530.97	7.8	23.91	225.2	8.80
10:45A	562.14	7.8	24.61	168.0	9.26
11:20A	593.34	7.8	25.05	270.0	10.91
1:00P	623.64	7.8	25.45	156.2	9.03
12:35P	652.99	7.8	24.96	152.1	9.65
1:15P	684.33	7.8	24.29	151.5	9.30
1:45P	714.33	7.8	25.62	195.7	8.90
★ 3:00P	" "	7.8	24.23	223.2	8.43

ACCIDENT ON SITE? YES <input type="checkbox"/> NO <input type="checkbox"/> DESCRIBE: ★ 2 hr. Air development	WEATHER CONDITIONS: DRILLING MUD USED: _____ WGT.: _____ VISCOSITY: _____ SPECIAL CONDITIONS/COMMENTS:
OPERATOR: Bruce Harman OWNER/ENG REP:	HELPERS: Jeff McLeary Craig Turner <i>Craig Turner</i>

DIVERSIFIED DRILLING CORPORATION DAILY DRILLING REPORT

DATE: 3-27-03 PROJECT: Reedy Creek
WELL NAME/DIA: _____ JOB NUMBER: 2077

WELL DEPTH - START OF SHIFT: 715' WATER LEVEL - START OF SHIFT: 16'
END OF SHIFT: _____ END OF SHIFT: _____

FORMATION	FROM	TO
-----------	------	----

R155-0 UP Pump. RAN Pump IN Hole TO 120', Tested Pump.

ACCIDENT ON SITE? YES _____ NO <input checked="" type="checkbox"/>	WEATHER CONDITIONS: <u>Clear</u>
DESCRIBE: _____	DRILLING MUD USED: _____ WGT.: _____ VISCOSITY: _____
_____	SPECIAL CONDITIONS/COMMENTS: _____
DRILLER: <u>BRUCE HARMAN</u>	HELPERS: <u>JEFF, CRAIG</u>
OWNER/ENG REP: _____	

DIVERSIFIED DRILLING CORPORATION DAILY DRILLING REPORT

DATE: <u>3-31-03</u>	PROJECT: <u>Reedy Creek</u>
WELL NAME/DIA: <u>MAGIC FLUORUM</u>	JOB NUMBER: <u>2077</u>

WELL DEPTH - START OF SHIFT: 715' WATER LEVEL - START OF SHIFT: 2'6"
 END OF SHIFT: _____ END OF SHIFT: _____

FORMATION	FROM	TO
-----------	------	----

RITTED UP LOGGER, TURNED PUMP ON RAN AT MAXIMUM OUTPUT. LOGGER UNABLE TO GET PAST 235'. RITTED LOGGER DOWN. PULLED PUMP RAN IN HOLE WITH DRILL BIT TAGGED SILENT AT 287'. WASHED HOLE DOWN TO 715'.

ACCIDENT ON SITE? YES _____ NO <u>✓</u> DESCRIBE: _____	WEATHER CONDITIONS: <u>CLEAR</u>
	DRILLING MUD USED: _____ WGT.: _____ VISCOSITY: _____
	SPECIAL CONDITIONS/COMMENTS: _____
OPERATOR: <u>BRUCE HARMAN</u>	HELPERS: <u>JEFF, CRAIG</u>
OWNER/ENG REP: _____	

DIVERSIFIED DRILLING CORPORATION DAILY DRILLING REPORT

DATE: <u>4-1-08</u>	PROJECT: <u>Reedy Creek</u>
WELL NAME/DIA: <u>MARIE KINGDOM</u>	JOB NUMBER: <u>2077</u>

WELL DEPTH - START OF SHIFT: <u>715'</u> END OF SHIFT: _____	WATER LEVEL - START OF SHIFT: <u>5.6"</u> END OF SHIFT: _____
-----------------------------------------------------------------	------------------------------------------------------------------

FORMATION	FROM	TO
-----------	------	----

REVERSE AIR AND CLEANED HOLE UP. PULLED OUT OF HOLE WITH BIT. RAN PUMP IN HOLE AND RAN 4 STEP PUMP TEST.

- 813-281-0032

Need to add
207 Recording Equipment
As part of Drilling Safety.

ACCIDENT ON SITE? YES _____ NO <u><input checked="" type="checkbox"/></u>	WEATHER CONDITIONS: <u>clear</u>
DESCRIBE: _____	DRILLING MUD USED: WGT.: VISCOSITY:
OWNER/ENG REP: _____	SPECIAL CONDITIONS/COMMENTS: _____
OPERATOR: <u>BRUCE HAMMAN</u>	HELPERS: <u>JEFF, CHRIS</u>

DIVERSIFIED DRILLING CORPORATION DAILY DRILLING REPORT

DATE: <u>4-2-03</u>	PROJECT: <u>Ruddy Creek</u>
WELL NAME/DIA:	JOB NUMBER: <u>2077</u>

WELL DEPTH - START OF SHIFT: 715' WATER LEVEL - START OF SHIFT: 5'6"
 END OF SHIFT: 930' END OF SHIFT: _____

FORMATION	FROM	TO
-----------	------	----

Ripped down Pump Test Equip, pulled pump out of hole. Ran in hole with drill pipe and bit well bridged off at 289' circulated to bottom drilled pilot hole from 715' to 930'

ACCIDENT ON SITE? YES <input type="checkbox"/> NO <input checked="" type="checkbox"/> DESCRIBE: _____	WEATHER CONDITIONS: <u>clear</u>
	DRILLING MUD USED: _____ WGT.: _____ VISCOSITY: _____ SPECIAL CONDITIONS/COMMENTS: _____
DRIVER: <u>BRUCE HARMAN</u>	HELPERS: <u>JEFF, CRAIG</u>
OWNER/ENG REP: _____	

DIVERSIFIED DRILLING CORPORATION DAILY DRILLING REPORT

DATE: <u>4-2-03</u>	PROJECT: <u>Reedy Creek</u>
WELL NAME/DIA: <u>Test Well</u>	JOB NUMBER: <u>2077</u>

WELL DEPTH - START OF SHIFT: 714.33
 END OF SHIFT: 931.46

WATER LEVEL - START OF SHIFT: _____
 END OF SHIFT: _____

FORMATION	FROM	TO
-----------	------	----

Time	Depth	IBV	Temp	SpC	PH
10:45A	745.73	7.7	21.88	232.1	8.76
11:45A	776.63	7.7	22.74	242.1	8.58
12:45p	807.58	7.7	23.00	343.3	8.73
1:15p	838.83 838.83	7.7	23.14	242.8	8.50
2:00p	869.73	7.7	23.36	269.8	8.66
4:15p	900.51	7.7	23.49	294.6	8.62
30	931.46	7.7	12.29	238.9	8.11

ACCIDENT ON SITE? YES <input type="checkbox"/> NO <input type="checkbox"/> DESCRIBE: <u>pull pump</u> <u>Trip in hole start drilling 9:45A</u>	WEATHER CONDITIONS: DRILLING MUD USED: _____ WGT.: _____ VISCOSITY: _____ SPECIAL CONDITIONS/COMMENTS:
MILLER: <u>Bruce Harman</u> OWNER/ENG REP:	HELPERS: <u>Craig Turner</u> <u>Jeff McLeary</u>

DIVERSIFIED DRILLING CORPORATION DAILY DRILLING REPORT

DATE: <u>4-3-03</u>	PROJECT: <u>Reedy Creek</u>
WELL NAME/DIA:	JOB NUMBER: <u>2077</u>

WELL DEPTH - START OF SHIFT: 930' WATER LEVEL - START OF SHIFT: 5'6"
 END OF SHIFT: 993' END OF SHIFT: _____

FORMATION	FROM	TO
-----------	------	----

CONTINUED DRILLING Pilot Hole TO 993'. ROTARY
 BRKs ON RTH. CIRCULATED Hole Two Hours Pulled
 DRILL PIPE OUT OF Hole. RIGGED UP ROTTER RAN
 LOGS. RAN IN Hole WITH PUMP RAN FLOW LOG IN
 CAMERA, FINISHED LOGGING AT 2:30PM FRIDAY. RIGGED
 DOWN ROTTER. Pulled PUMP.

ACCIDENT ON SITE? YES <input type="checkbox"/> NO <input checked="" type="checkbox"/>	WEATHER CONDITIONS: <u>Clear</u>
DESCRIBE:	DRILLING MUD USED: WGT.: VISCOSITY:
	SPECIAL CONDITIONS/COMMENTS:
DRILLER: <u>BRUCE HARMAN</u>	HELPERS: <u>JEFF, CRAIG</u>
OWNER/ENG REP:	

DIVERSIFIED DRILLING CORPORATION DAILY DRILLING REPORT

DATE: 4-3-03

PROJECT: Reedy Creek

WELL NAME/DIA: Test Well

JOB NUMBER: 2077

WELL DEPTH - START OF SHIFT: 931.46
END OF SHIFT: 993.28

WATER LEVEL - START OF SHIFT: _____
END OF SHIFT: _____

FORMATION	FROM	TO
-----------	------	----

Time	Depth	IBV	Temp	SpC	PH
9:30A	962.56	7.7	24.83	338.6	8.54
11:00A	993.28	7.7	24.61	235.4	9.22

ACCIDENT ON SITE? YES <input type="checkbox"/> NO <input type="checkbox"/>	WEATHER CONDITIONS:
DESCRIBE:	DRILLING MUD
	USED: WGT.: VISCOSITY:
	SPECIAL CONDITIONS/COMMENTS:
DRILLER: <u>Bruce Harman</u>	HELPERS: <u>Craig Turner</u>
OWNER/ENG REP:	<u>Jeff McHenry</u>

DIVERSIFIED DRILLING CORPORATION DAILY DRILLING REPORT

DATE: 4-7-03

WELL NAME/DIA:

PROJECT: READY CREEK

JOB NUMBER: 2077

WELL DEPTH - START OF SHIFT: 993'

END OF SHIFT: _____

WATER LEVEL - START OF SHIFT: _____

END OF SHIFT: _____

FORMATION	FROM	TO
-----------	------	----

WORKED ON RIG & EQUIPMENT. RAN 10 HOLES WITH 9 7/8"
P. 102 BIT.

ACCIDENT ON SITE? YES _____ NO <u>✓</u> DESCRIBE: _____ 	WEATHER CONDITIONS: <u>CLEAR</u> DRILLING MUD USED: _____ WGT.: _____ VISCOSITY: _____ SPECIAL CONDITIONS/COMMENTS:
DRILLER: <u>BRUCE HARMAN</u> OWNER/ENG REP: _____	HELPERS: <u>JEFF, CRAIG</u>

DIVERSIFIED DRILLING CORPORATION DAILY DRILLING REPORT

DATE: 4-8-03
WELL NAME/DIA:

PROJECT: Reedy Creek
JOB NUMBER: 2077

WELL DEPTH - START OF SHIFT: 993'
END OF SHIFT: 1260'

WATER LEVEL - START OF SHIFT: 5'
END OF SHIFT: _____

FORMATION	FROM	TO
-----------	------	----

Drilled 7 7/8" Pilot Hole FROM 993' TO 1260'

ACCIDENT ON SITE? YES _____ NO <input checked="" type="checkbox"/> DESCRIBE: _____	WEATHER CONDITIONS: <u>Clear</u>
DRILLER: <u>Bruce Harman</u> OWNER/ENG REP: _____	DRILLING MUD USED: WGT.: VISCOSITY: <u>AIR</u> SPECIAL CONDITIONS/COMMENTS: HELPERS: <u>Craig, Jeff</u>

DIVERSIFIED DRILLING CORPORATION DAILY DRILLING REPORT

DATE: <u>4-8-03</u>	PROJECT: <u>Reedy Creek</u>
WELL NAME/DIA: <u>Test well</u>	JOB NUMBER: <u>2077</u>

WELL DEPTH - START OF SHIFT: 993.28
 END OF SHIFT: 1250

WATER LEVEL - START OF SHIFT: _____
 END OF SHIFT: _____

FORMATION	FROM	TO
-----------	------	----

Time	Depth	IBV	Temp	SpG	PH
9:05 _a	1023.78	7.7	23.90	713.8	8.38
10:30 _A	1054.30	7.7	24.55	693.9	8.34
11:45 _A	1086.06	7.7	25.46	379.4	8.75
12:45 _p	1116.58	7.7	27.98	472.1	8.50
2:00 _p	1147.67	7.7	27.20	602.5	8.49
3:30 _p	1178.59	7.7	26.69	370.0	8.57
4:30 _p	1209.49	7.7	26.96	288.3	8.63
5:45 _p	1240.96	7.7	26.13	286.4	8.68
	1270.91				

ACCIDENT ON SITE? YES <input type="checkbox"/> NO <input type="checkbox"/> DESCRIBE: <u>★ Shut Down 7:00p</u> <u>Depth 1250</u>	WEATHER CONDITIONS: DRILLING MUD USED: _____ WGT.: _____ VISCOSITY: _____ SPECIAL CONDITIONS/COMMENTS:
DRILLER: <u>Bruce Harman</u> OWNER/ENG REP:	HELPERS: <u>Craig Turner</u> <u>Jeff McLeray</u>

DIVERSIFIED DRILLING CORPORATION DAILY DRILLING REPORT

DATE: 4-9-03
WELL NAME/DIA: _____

PROJECT: Reedy Creek
JOB NUMBER: 2077

WELL DEPTH - START OF SHIFT: 1260'
END OF SHIFT: 1350'

WATER LEVEL - START OF SHIFT: 5'
END OF SHIFT: _____

FORMATION	FROM	TO
-----------	------	----

Drilled 9 7/8" Pilot Hole FROM 1260' TO 1350'
Circulated Hole FOR FOUR Hours Pulled DRILL PIPE
AND BIT OUT OF Hole.

ACCIDENT ON SITE? YES ___ NO <u>✓</u> DESCRIBE: _____ _____ _____	WEATHER CONDITIONS: <u>Clear</u> DRILLING MUD USED: _____ WGT.: _____ VISCOSITY: <u>Air</u> SPECIAL CONDITIONS/COMMENTS: _____ _____
OPERATOR: <u>BRUCE HARMAN</u> OWNER/ENG REP: _____	HELPERS: <u>CRAIG, TERRY</u>

**DIVERSIFIED DRILLING CORPORATION
DAILY DRILLING REPORT**

DATE: <u>4-9-03</u>	PROJECT: <u>Reedy Creek</u>
WELL NAME/DIA: <u>Test well</u>	JOB NUMBER: <u>2077</u>

WELL DEPTH - START OF SHIFT: <u>1250</u> END OF SHIFT: <u>1350</u>	WATER LEVEL - START OF SHIFT: _____ END OF SHIFT: _____
-----------------------------------------------------------------------	------------------------------------------------------------

FORMATION	FROM	TO			
<i>Time</i>	<i>Depth</i>	<i>IBV</i>	<i>Temp</i>	<i>Spl</i>	<i>PH</i>
<u>8:30A</u>	<u>1270.94</u>	<u>8.2</u>	<u>22.03</u>	<u>315.7</u>	<u>8.49</u>
<u>10:00A</u>	<u>1301.94</u>	<u>8.2</u>	<u>22.47</u>	<u>320.2</u>	<u>8.54</u>
<u>12:00p</u>	<u>1333.74</u>	<u>8.2</u>	<u>23.63</u>	<u>272.8</u>	<u>8.33</u>
<u>12:40p</u>	<u>1350.00</u>	<u>8.1</u>	<u>27.18</u>	<u>293.1</u>	<u>8.37</u>

4 hrs. Circulate (clean hole)
Trip out of Hole

ACCIDENT ON SITE? YES <input type="checkbox"/> NO <input type="checkbox"/> DESCRIBE: _____ _____ _____	WEATHER CONDITIONS: DRILLING MUD USED: _____ WGT.: _____ VISCOSITY: _____ SPECIAL CONDITIONS/COMMENTS: _____ _____
DRILLER: <u>Bruce Harman</u> OWNER/ENG REP: _____	HELPERS: <u>Craig Turner</u> <u>Jeff Meteroy</u>

DIVERSIFIED DRILLING CORPORATION DAILY DRILLING REPORT

DATE: 4-10-03

PROJECT: Reedy Creek

WELL NAME/DIA: _____

JOB NUMBER: 2077

WELL DEPTH - START OF SHIFT: 1350'
END OF SHIFT: _____

WATER LEVEL - START OF SHIFT: 5'
END OF SHIFT: _____

FORMATION	FROM	TO
-----------	------	----

*WENT TO TAMPA PICKED UP TEST PUMP AND SUPPLIES.
RIGGED UP TEST PUMP WIRED TO GENERATOR EQUIPMENT,
LAYED FLOW LINE.*

ACCIDENT ON SITE? YES ___ NO <input checked="" type="checkbox"/> DESCRIBE: _____ _____ _____	WEATHER CONDITIONS: <u>clear</u> DRILLING MUD USED: _____ WGT.: _____ VISCOSITY: _____ SPECIAL CONDITIONS/COMMENTS: _____ _____
OWNER/ENG REP: _____	HELPERS: <u>CRUIS, JEFF</u>

DIVERSIFIED DRILLING CORPORATION DAILY DRILLING REPORT

DATE: 4-11-03
WELL NAME/DIA:

PROJECT: Reedy Creek
JOB NUMBER:

WELL DEPTH - START OF SHIFT: 1350'
END OF SHIFT: _____

WATER LEVEL - START OF SHIFT: 5'
END OF SHIFT: _____

FORMATION	FROM	TO
-----------	------	----

Rigged up logging truck. Logged on well. Ran pump in hole for flow logs. Picked down logs.

ACCIDENT ON SITE? YES ___ NO <input checked="" type="checkbox"/> DESCRIBE: _____	WEATHER CONDITIONS: <u>Clear</u>
	DRILLING MUD USED: _____ WGT.: _____ VISCOSITY: _____
	SPECIAL CONDITIONS/COMMENTS: _____
DRILLER: <u>BRUCE HARMAN</u> OWNER/ENG REP: _____	HELPERS: <u>CRAIG, JEFF</u>

DIVERSIFIED DRILLING CORPORATION DAILY DRILLING REPORT

DATE: 4-14-03

PROJECT: Reedy Creek

WELL NAME/DIA:

JOB NUMBER: 2077

WELL DEPTH - START OF SHIFT: 1350'
END OF SHIFT: 266'

WATER LEVEL - START OF SHIFT: 5'
END OF SHIFT: _____

FORMATION	FROM	TO
-----------	------	----

Pulled Pump out of Hole. Ran in hole with 17" Reamer drilled from 200' to 266'

ACCIDENT ON SITE? YES _____ NO <u>✓</u> DESCRIBE: _____ _____ _____	WEATHER CONDITIONS: <u>Clear</u> DRILLING MUD USED: _____ WGT.: _____ VISCOSITY: <u>AIR</u> SPECIAL CONDITIONS/COMMENTS: _____ _____
DRILLER: <u>Druce Harman</u> OWNER/ENG REP: _____	HELPERS: <u>CRAIG, JEFF</u>

DIVERSIFIED DRILLING CORPORATION DAILY DRILLING REPORT

DATE: 4-15-03
WELL NAME/DIA:

PROJECT: Acroy Creek
JOB NUMBER: 2037

WELL DEPTH - START OF SHIFT: 266'
END OF SHIFT: 460'

WATER LEVEL - START OF SHIFT: 5'
END OF SHIFT: _____

FORMATION	FROM	TO
-----------	------	----

Drilled 17" Hole FROM 266' TO 460'

ACCIDENT ON SITE? YES _____ NO <input checked="" type="checkbox"/>	WEATHER CONDITIONS: <u>Clear</u>
DESCRIBE:	DRILLING MUD USED: _____ WGT.: _____ VISCOSITY: <u>AIR</u>
	SPECIAL CONDITIONS/COMMENTS:
DRILLER: <u>BAUCE HARMAN</u>	HELPERS: <u>JEFF, CRAIG</u>
OWNER/ENG REP:	

DIVERSIFIED DRILLING CORPORATION DAILY DRILLING REPORT

DATE: 4-16-03

PROJECT: Reedy Creek

WELL NAME/DIA:

JOB NUMBER: 2077

WELL DEPTH - START OF SHIFT: 460'
END OF SHIFT: 850'

WATER LEVEL - START OF SHIFT: 5'
END OF SHIFT: _____

FORMATION	FROM	TO
-----------	------	----

Drilled 17" Hole FROM 460' TO 850'

ACCIDENT ON SITE? YES ___ NO <u>✓</u> DESCRIBE: _____ _____ _____	WEATHER CONDITIONS: <u>Clear</u> DRILLING MUD USED: WGT.: VISCOSITY: SPECIAL CONDITIONS/COMMENTS: _____ _____
DRILLER: <u>BRUCE HARMAN</u> OWNER/ENG REP: _____	HELPERS: <u>JEFF, CRAIG</u>

DIVERSIFIED DRILLING CORPORATION DAILY DRILLING REPORT

DATE: 4-17-03
WELL NAME/DIA:

PROJECT: Reedy Creek
JOB NUMBER: 2077

WELL DEPTH - START OF SHIFT: 850'
END OF SHIFT: 975'

WATER LEVEL - START OF SHIFT: 5'
END OF SHIFT: _____

FORMATION	FROM	TO
-----------	------	----

Drilled 17" Hole From 850' TO 975'

ACCIDENT ON SITE? YES _____ NO
DESCRIBE: _____

WEATHER CONDITIONS: clear

DRILLING MUD
USED: _____ WGT.: _____ VISCOSITY: _____
SPECIAL CONDITIONS/COMMENTS: _____

DRILLER: BRUCE HAMMAN
OWNER/ENG REP: _____

HELPERS: JEFF, CRAIG

DIVERSIFIED DRILLING CORPORATION DAILY DRILLING REPORT

DATE: 4-21-03

PROJECT: Ready Creek

WELL NAME/DIA:

JOB NUMBER: #2077

WELL DEPTH - START OF SHIFT: 975'
END OF SHIFT: 1080'

WATER LEVEL - START OF SHIFT: 5'
END OF SHIFT: _____

FORMATION	FROM	TO
-----------	------	----

Drilled 12" Hole FROM 975' TO 1080'

ACCIDENT ON SITE? YES _____ NO <u>✓</u>	WEATHER CONDITIONS: <u>Clear</u>
DESCRIBE:	DRILLING MUD USED: _____ WGT.: _____ VISCOSITY: _____
	SPECIAL CONDITIONS/COMMENTS:
DRILLER: <u>BRUCE HARMAN</u>	HELPERS: <u>JEFF, CRAIG</u>
OWNER/ENG REP:	

DIVERSIFIED DRILLING CORPORATION DAILY DRILLING REPORT

DATE: 4-28-03

PROJECT: Reedy Creek

WELL NAME/DIA:

JOB NUMBER: 2077

WELL DEPTH - START OF SHIFT: 1080'
END OF SHIFT: 1122'

WATER LEVEL - START OF SHIFT: 5'
END OF SHIFT: _____

FORMATION	FROM	TO
-----------	------	----

Drilled 17" ~~Bit~~ Hole FROM 1080' TO 1122'

Pulled OUT OF Hole RAN BUES.

ACCIDENT ON SITE? YES _____ NO <u>✓</u> DESCRIBE: _____ _____ _____	WEATHER CONDITIONS: <u>CLEAR</u> DRILLING MUD USED: _____ WGT.: _____ VISCOSITY: _____ SPECIAL CONDITIONS/COMMENTS: _____ _____
DRILLER: <u>BRUCE HARMAN</u> OWNER/ENG REP: _____	HELPERS: <u>JEFF, CRAIG</u>

DIVERSIFIED DRILLING CORPORATION DAILY DRILLING REPORT

DATE: 4-23-03

PROJECT: Reed Creek

WELL NAME/DIA: _____

JOB NUMBER: 2077

WELL DEPTH - START OF SHIFT: 1172'
END OF SHIFT: _____

WATER LEVEL - START OF SHIFT: 5'
END OF SHIFT: _____

FORMATION	FROM	TO
-----------	------	----

RAN 10" CASING TOTAL OF 1177'. RAN 1148' OF
2 7/8" TRIM PIPE CEMENTED WITH 350 SACKS NET
CEMENT.

ACCIDENT ON SITE? YES _____ NO <u>✓</u> DESCRIBE: _____ _____ _____	WEATHER CONDITIONS: <u>Clear</u> DRILLING MUD USED: _____ WGT.: _____ VISCOSITY: _____ SPECIAL CONDITIONS/COMMENTS: _____ _____
OPERATOR: <u>BRUCE HARMAN</u> OWNER/ENG REP: _____	HELPERS: <u>JEFF, CRAIG, GIFF,</u> <u>DAVID,</u>

DIVERSIFIED DRILLING CORPORATION DAILY DRILLING REPORT

DATE: 4/24/03

PROJECT: Reedy Creek

WELL NAME/DIA: 10"

JOB NUMBER: 2077

WELL DEPTH - START OF SHIFT: _____
END OF SHIFT: _____

WATER LEVEL - START OF SHIFT: _____
END OF SHIFT: _____

FORMATION	FROM	TO
-----------	------	----

POOH w/ 2 7/8 c.s. trim pipe

T.I.H. w/ 1 1/4 c.s. trim

Cement 1st stage annulus cement - 296 12%

W.I.H. w/ temp log cement @ 863

ACCIDENT ON SITE? YES _____ NO <input checked="" type="checkbox"/> DESCRIBE: _____ _____ _____	WEATHER CONDITIONS: DRILLING MUD USED: WGT.: VISCOSITY: SPECIAL CONDITIONS/COMMENTS: _____ _____
MILLER: <u>J. Mc Leroy</u> OWNER/ENG REP: _____	HELPERS: <u>C. Turner</u>

DIVERSIFIED DRILLING CORPORATION DAILY DRILLING REPORT

DATE: 4/28/03

PROJECT: Reedy Creek

WELL NAME/DIA: 10"

JOB NUMBER: 12077

WELL DEPTH - START OF SHIFT: _____
END OF SHIFT: _____

WATER LEVEL - START OF SHIFT: _____
END OF SHIFT: _____

FORMATION	FROM	TO
-----------	------	----

Tag 2nd stage annulus cement @ 855

Pump 3rd stage - 250 12%

RIH w/ temp log

ACCIDENT ON SITE? YES _____ NO <u>X</u>	WEATHER CONDITIONS:
DESCRIBE:	DRILLING MUD
	USED: WGT.: VISCOSITY:
	SPECIAL CONDITIONS/COMMENTS:
OPERATOR: J. McLeRoy	HELPERS: C. Turner
OWNER/ENG REP:	

DIVERSIFIED DRILLING CORPORATION DAILY DRILLING REPORT

DATE: 4/28

PROJECT: Magic Kings Dam

WELL NAME/DIA: WDW

JOB NUMBER: 2077

WELL DEPTH - START OF SHIFT: _____
END OF SHIFT: _____

WATER LEVEL - START OF SHIFT: _____
END OF SHIFT: _____

FORMATION	FROM	TO
-----------	------	----

Cement 3rd stage annulus
Temp 784'
Tag 785'

ACCIDENT ON SITE? YES <input type="checkbox"/> NO <input checked="" type="checkbox"/> DESCRIBE: _____ _____ _____	WEATHER CONDITIONS: _____ DRILLING MUD USED: _____ WGT.: _____ VISCOSITY: _____ SPECIAL CONDITIONS/COMMENTS: _____ _____
DRILLER: <u>J. Mc Leray</u> OWNER/ENG REP: _____	HELPERS: <u>C. Turner</u>

DIVERSIFIED DRILLING CORPORATION DAILY DRILLING REPORT

DATE: 4/30
WELL NAME/DIA: Reedy Creek

PROJECT: Magic Kingdom
JOB NUMBER: 2077

WELL DEPTH - START OF SHIFT: _____
END OF SHIFT: _____

WATER LEVEL - START OF SHIFT: _____
END OF SHIFT: _____

FORMATION	FROM	TO
-----------	------	----

Cement 5th stage annulas
 Temp 372
 Tag 375

ACCIDENT ON SITE? YES <input type="checkbox"/> NO <input checked="" type="checkbox"/> DESCRIBE: _____ _____ _____	WEATHER CONDITIONS: _____ DRILLING MUD USED: _____ WGT.: _____ VISCOSITY: _____ SPECIAL CONDITIONS/COMMENTS: _____ _____
DRILLER: <u>J. McLeray</u> OWNER/ENG REP: _____	HELPERS: <u>C. Turner</u>

DIVERSIFIED DRILLING CORPORATION DAILY DRILLING REPORT

DATE: 5/01
WELL NAME/DIA: Reedy Creek

PROJECT: Magic Kingdom
JOB NUMBER: 2077

WELL DEPTH - START OF SHIFT: _____
END OF SHIFT: _____

WATER LEVEL - START OF SHIFT: _____
END OF SHIFT: _____

FORMATION	FROM	TO
-----------	------	----

Cement 16th stage annulas
 Temp 316'
 Tag 320'

ACCIDENT ON SITE? YES <input type="checkbox"/> NO <input checked="" type="checkbox"/> DESCRIBE: _____ _____ _____	WEATHER CONDITIONS: _____ DRILLING MUD USED: _____ WGT.: _____ VISCOSITY: _____ SPECIAL CONDITIONS/COMMENTS: _____ _____
DRILLER: J. McLeray OWNER/ENG REP: _____	HELPERS: C. Turner

DIVERSIFIED DRILLING CORPORATION DAILY DRILLING REPORT

DATE: 5/02

WELL NAME/DIA: Reedy Creek

PROJECT: Magic Kingdom

JOB NUMBER: 2077

WELL DEPTH - START OF SHIFT: _____
END OF SHIFT: _____

WATER LEVEL - START OF SHIFT: _____
END OF SHIFT: _____

FORMATION	FROM	TO
-----------	------	----

Cement 7th stage annulas.
Temp 310'

ACCIDENT ON SITE? YES _____ NO <input checked="" type="checkbox"/>	WEATHER CONDITIONS:
DESCRIBE:	DRILLING MUD USED: _____ WGT.: _____ VISCOSITY: _____
	SPECIAL CONDITIONS/COMMENTS:
DRILLER: <u>J. McLeary</u>	HELPERS: <u>C. Turner</u>
OWNER/ENG REP:	

DIVERSIFIED DRILLING CORPORATION DAILY DRILLING REPORT

DATE: 5-5-03

PROJECT: Reedy Creek

WELL NAME/DIA:

JOB NUMBER: 2077

WELL DEPTH - START OF SHIFT: 1170

WATER LEVEL - START OF SHIFT: _____

END OF SHIFT: _____

END OF SHIFT: _____

FORMATION	FROM	TO
-----------	------	----

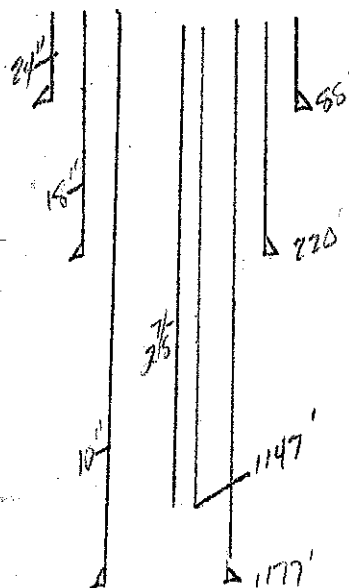
TAFF-00 Cement	AT 306'	Cemented with 350 lbs Cement RAN TEMP SURVEY & HAS LAT-R
-------------------	---------	----------------------------------------------------------------

ACCIDENT ON SITE? YES _____ NO <u>✓</u>	WEATHER CONDITIONS: <u>Clear</u>
DESCRIBE:	DRILLING MUD USED: _____ WGT.: _____ VISCOSITY: _____
	SPECIAL CONDITIONS/COMMENTS:
DRILLER: <u>BRUCE HARMAN</u>	HELPERS: <u>JEFF, CRAIG</u>
OWNER/ENG REP:	

PUMPING PROJECT WORKSHEET

PROJECT NAME: <u>REEDY CREEK</u>	DATE: FROM <u>4/23/03</u> → <u>5/5/03</u>
B NUMBER: <u>2077</u>	PUMPER: <u>JOHN GERO</u>
WELL NUMBER:	DRILLER: <u>BRUCE HARMON</u>
OWNER: <u>DISNEY</u>	WEATHER CONDITIONS:
CONSULTANT: <u>SFWMD</u>	<u>ALL KINDS</u>
TASK: <u>CEMENT 1177' of 10" CSG, 375' NEAT</u>	KNOWN FACTORS:
<u>IN A 17" HOLE</u>	<u>PREV CSG: 24" @ 98', 18" @ 220'</u>
	<u>CSG @ 1177</u>
	<u>TUBING: 2 7/8" @ 1147'</u>

CALCULATIONS & SKETCH:



CEMENT TOTALS

NEAT	12%
2074 SKS	1852 SKS
 TOTAL	 3926 SKS

OPERATION SEQUENCE: Pump 73 BBLs NEAT (MT, FOLLOWED BY 9.8 BBLs FLUSH,
 STG#2: Pump 51 BBLs pull 4, Pump 35 BBLs. STG#3: pump 51 BBLs pull 3, Pump 35 BBLs. STG#4: Pump 137 BBLs
 STG#5: pump 137 BBL 12%. STAGE#6: pump 51 BBL 12% + 62 BBL NEAT STAGE#7: pump 63 BBLs NEAT
 STAGE#8: pump 63 BBL NEAT STAGE#9: Pump 63 BBLs NEAT. STAGE#10: pump 63 BBLs NEAT
 STAGE#11: pump 63 BBL NEAT. STAGE#12 pump 33 BBL NEAT CEMENT JS @ SURFACE

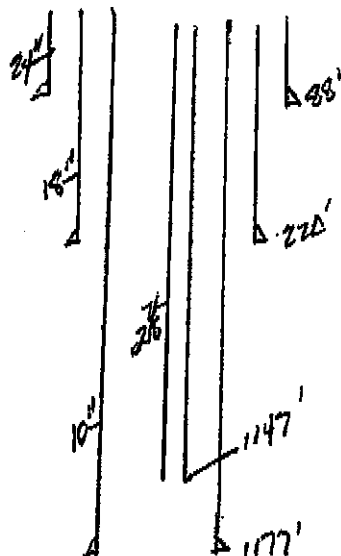
POST JOB SUMMARY:

STAGE#	SKS	TYPE	TAG	STAGE#	SKS	TYPE	TAG
				7	300	NEAT	375'
1	350	NEAT	395'	8	300	NEAT	303'
2	296	12%	575'	9	300	12%	301'
3	350	12%	656'	10	300	NEAT	270'
4	350	12%	576'	11	300	NEAT	149'
5	350	12%		12	155	NEAT	SURFACE
6	161/300	12% NEAT					

PUMPING PROJECT WORKSHEET

PROJECT NAME: <u>KEEY CREEK</u>	DATE: <u>From 4/23/03 → 5/8/03</u>
JOB NUMBER: <u>2077</u>	PUMPER: <u>JOHN GERD</u>
WELL NUMBER:	DRILLER: <u>BRUCE HARMON</u>
OWNER: <u>DISNEY</u>	WEATHER CONDITIONS:
CONSULTANT: <u>SFWIND</u>	<u>ALL KINDS</u>
TASK: <u>CEMENT 1177' of 10" CSQ, 3752' in a 17" Hole</u>	KNOWN FACTORS:
	<u>Prev CSQ: 24" @ 95', 18" @ 220'</u>
	<u>CSQ @ 1177'</u>
	<u>TUBING: 2 7/8" @ 1147'</u>

CALCULATIONS & SKETCH:



CEMENT TOTALS

NEAT	12%
2074 SKS	1852 SKS
Total	3926 SKS

OPERATION SEQUENCE: Pump 73 BBLs NEAT CAT, FOLLOWED BY 9.8 BBLs FLUSH,
 STAGE#2: Pump 31 BBLs pull 4, Pump 35 BBLs, STAGE#3: Pump 31 BBLs pull 3, Pump 35 BBLs, STAGE#4: Pump 137 BBLs 12%
 STAGE#5: Pump 137 BBL 12%, STAGE#6: Pump 31 BBL 12% & 12 BBL NEAT STAGE#7: Pump 63 BBLs NEAT
 STAGE#8: Pump 137 BBL NEAT STAGE#9: Pump 63 BBLs NEAT STAGE#10: Pump 63 BBLs NEAT
 STAGE#11: Pump 63 BBL NEAT STAGE#12: Pump 33 BBL NEAT CEMENT IS @ SURFACE

POST JOB SUMMARY:

STAGE#	SKS	TYPE	TAG	STAGE#	SKS	TYPE	TAG
				7	300	NEAT	975'
1	350	NEAT	995'	8	300	NEAT	303'
	216	12%	875'	9	300	12%	301'
3	350	12%	636'	10	300	NEAT	270'
4	350	12%	576'	11	300	NEAT	149'
5	350	12%		12	155	NEAT	SURFACE
10	261,210	12%/NEAT					

DIVERSIFIED DRILLING CORPORATION DAILY DRILLING REPORT

DATE: 5-12-03

PROJECT: Ray Creek

WELL NAME/DIA: _____

JOB NUMBER: #2077

WELL DEPTH - START OF SHIFT: 1170
END OF SHIFT: _____

WATER LEVEL - START OF SHIFT: _____
END OF SHIFT: _____

FORMATION	FROM	TO
-----------	------	----

*RAN PRE-TEST ON CASING. TESTED AT 100 P.S.I.
Bled OFF 3 LBS IN ONE HOUR. CLEARED OUT MUD
P.T.S.*

ACCIDENT ON SITE? YES <input type="checkbox"/> NO <input checked="" type="checkbox"/> DESCRIBE: _____ _____ _____	WEATHER CONDITIONS: <u>Clear</u> DRILLING MUD USED: _____ WGT.: _____ VISCOSITY: _____ SPECIAL CONDITIONS/COMMENTS: _____ _____
DRILLER: <u>BRUCE HARMAN</u> OWNER/ENG REP: _____	HELPERS: <u>JEFF, JASON</u>

DIVERSIFIED DRILLING CORPORATION DAILY DRILLING REPORT

DATE: 5-13-03
WELL NAME/DIA: _____

PROJECT: Reedy Creek
JOB NUMBER: 2077

WELL DEPTH - START OF SHIFT: 1170'
END OF SHIFT: _____

WATER LEVEL - START OF SHIFT: _____
END OF SHIFT: _____

FORMATION	FROM	TO
-----------	------	----

RAN PRESSURE TEST ON CASING. TESTED AT 100 P.S.I. FOR 1 HOUR. BLEED OFF 2 P.S.I. IN 1 HOUR. CUT CASING HEAD OFF. RAN 10' HOLE WITH BITS TAGGED CEMENT AT 1160'.

ACCIDENT ON SITE? YES _____ NO <input checked="" type="checkbox"/>	WEATHER CONDITIONS: <u>CLEAR</u>
DESCRIBE: _____	DRILLING MUD USED: _____ WGT.: _____ VISCOSITY: _____ SPECIAL CONDITIONS/COMMENTS: _____
DRILLER: <u>BRUCE HARMAN</u>	HELPERS: <u>JEFF, TABON</u>
OWNER/ENG REP: _____	

Florida Automatic Controls Company, Inc.

FAX (813) 254-7213 PHONE (813) 251-1358/251-1359 504 SOUTH HOWARD AVE. TAMPA, FLORIDA 33606

CERTIFIED CALIBRATION CHART

CUSTOMER DIVERSIFIED WELL DRILLING

CUSTOMER ORDER NO. _____ DATE 04/09/03 GAUGE NO # Q-4907

GAUGE DESCRIPTION 45-1082AW 02L 200# TEST GAUGE

TRUE VALUE	INDICATED VALUE
0	0
50	50
100	100
150	150
200	200

CALIBRATION STANDARD Dead Weight Tester SERIAL NO. 2MH-27999

TESTED BY: BEN CORVETTE  DATE 04/09/03

THIS IS TO CERTIFY THAT THIS GAUGE HAS BEEN INSPECTED, ADJUSTED AND TESTED AGAINST PRESSURE STANDARD DEADWEIGHT TESTER TRACEABLE TO THE NATIONAL INSTITUTE OF STANDARDS AND TECHNOLOGY. ACCURACY TEST REFERENCE NO. 731-238622-87, COMPENSTATED TO LOCAL ACCELERATION DUE TO GRAVITY WITH ACCURACY OF 1/20 OF 1%.

DIVERSIFIED DRILLING CORPORATION DAILY DRILLING REPORT

DATE: 5-19-03

PROJECT: Reddy Creek

WELL NAME/DIA:

JOB NUMBER: 2077

WELL DEPTH - START OF SHIFT: 1370'
END OF SHIFT: 1530'

WATER LEVEL - START OF SHIFT: 12'
END OF SHIFT: _____

FORMATION	FROM	TO
-----------	------	----

Drilled Pilot Hole From 1370' TO 1530' 7 7/8" Hole

CAUGHT 5' SAMPLES

ACCIDENT ON SITE? YES _____ NO <u>✓</u> DESCRIBE: _____ _____ _____	WEATHER CONDITIONS: <u>Clear</u> DRILLING MUD USED: _____ WGT.: _____ VISCOSITY: _____ SPECIAL CONDITIONS/COMMENTS: _____ _____
DRILLER: <u>Bruce Harman</u> OWNER/ENG REP: _____	HELPERS: <u>Jeff, Tason</u>

DIVERSIFIED DRILLING CORPORATION DAILY DRILLING REPORT

DATE: 5-20-03

PROJECT: Reedy Creek

WELL NAME/DIA: _____

JOB NUMBER: 2077

WELL DEPTH - START OF SHIFT: 1530'
END OF SHIFT: 1650'

WATER LEVEL - START OF SHIFT: 12'
END OF SHIFT: _____

FORMATION	FROM	TO
-----------	------	----

Drilled 7 7/8" Pilot Hole FROM 1530' TO 1650'. CAUGHT 5' SAMPLES. BIT GAIT DRILLING.

ACCIDENT ON SITE? YES _____ NO <u>✓</u>	WEATHER CONDITIONS: <u>Clear</u>
DESCRIBE: _____	<u>AIR</u>
	DRILLING MUD
	USED: _____ WGT.: _____ VISCOSITY: _____
	SPECIAL CONDITIONS/COMMENTS: _____
DRILLER: <u>BRUCE HARMAN</u>	HELPERS: <u>JEFF, JASON</u>
OWNER/ENG REP: _____	

DIVERSIFIED DRILLING CORPORATION DAILY DRILLING REPORT

DATE: 5-21-03 PROJECT: Recoy Creek
 WELL NAME/DIA: _____ JOB NUMBER: 2077

WELL DEPTH - START OF SHIFT: 1680' WATER LEVEL - START OF SHIFT: 12'
 END OF SHIFT: 1650' END OF SHIFT: _____

FORMATION	FROM	TO
-----------	------	----

Pulled DRILL PIPE & BIT OUT OFF Hole. BIT WAS OK.
Took IRON IN Hole. WENT TO TAMPA TO PICK UP
MILL. RETURNED TO LOCATION RIGGED UP MILL STARTED
RUNNING IN Hole.

ACCIDENT ON SITE? YES _____ NO <u>X</u> DESCRIBE: _____ _____ _____	WEATHER CONDITIONS: <u>Clear</u> DRILLING MUD USED: WGT.: _____ VISCOSITY: <u>AIR</u> SPECIAL CONDITIONS/COMMENTS: _____ _____
DRILLER: <u>BRUCE HARMAN</u> OWNER/ENG REP: _____	HELPERS: <u>JEFF, JASON</u>

DIVERSIFIED DRILLING CORPORATION DAILY DRILLING REPORT

DATE: 5-22-03

PROJECT: Ready Creek

WELL NAME/DIA:

JOB NUMBER: 2077

WELL DEPTH - START OF SHIFT: 1650'
END OF SHIFT: _____

WATER LEVEL - START OF SHIFT: 12'
END OF SHIFT: _____

FORMATION	FROM	TO
-----------	------	----

FINISHED RUNNING IN HOLES WITH MILL. PULLED IN JUNK IRON
AND DRILLED 5' WITH MILL. UNABLE TO FIND ANYMORE
JUNK IRON. PULLED OUT OF HOLE WITH MILL

ACCIDENT ON SITE? YES ___ NO ✓

WEATHER CONDITIONS: CLEAR

DESCRIBE:

DRILLING MUD
USED: WGT.: VISCOSITY: H2O
SPECIAL CONDITIONS/COMMENTS:

DRILLER: BRUCE HARMAN

HELPERS: JEFF, JASON

OWNER/ENG REP:

DIVERSIFIED DRILLING CORPORATION DAILY DRILLING REPORT

DATE: 6-6-03 - Friday
WELL NAME/DIA: Test Well

PROJECT: Reddy Creek
JOB NUMBER: 2077

WELL DEPTH - START OF SHIFT: _____
END OF SHIFT: _____

WATER LEVEL - START OF SHIFT: _____
END OF SHIFT: _____

FORMATION	FROM	TO
-----------	------	----

Check Equipment - Drill From 1700' to 1766'
Formations:

Delomite - 1720' to 1728'

Limestone - 1728' to 1762'

Delomite - 1762' to 1766'

ACCIDENT ON SITE? YES _____ NO X
DESCRIBE: _____

WEATHER CONDITIONS: Cloudy

DRILLING MUD USED: WGT.: VISCOSITY:

SPECIAL CONDITIONS/COMMENTS:

DRILLER: *Charlie Rodwin*

HELPERS: *Demetrius B. Polunin*
Juff McElroy

OWNER/ENG REP:

DIVERSIFIED DRILLING CORPORATION DAILY DRILLING REPORT

DATE: 6-9-23
WELL NAME/DIA: _____

PROJECT: _____
JOB NUMBER: _____

WELL DEPTH - START OF SHIFT: 1766'
END OF SHIFT: 1820'

WATER LEVEL - START OF SHIFT: _____
END OF SHIFT: _____

FORMATION	FROM	TO
-----------	------	----

Drilled From 1766' TO 1820' 7 7/8" Pilot Hole

ACCIDENT ON SITE? YES ___ NO ✓

WEATHER CONDITIONS: clear

DESCRIBE:

DRILLING MUD
USED: WGT.: VISCOSITY:
SPECIAL CONDITIONS/COMMENTS:

DRILLER: BRUCE HARDMAN

HELPERS: JEFF, ~~ET~~ JASON

OWNER/ENG REP:

DIVERSIFIED DRILLING CORPORATION DAILY DRILLING REPORT

DATE: 6-10-03

PROJECT: Paddy Creek

WELL NAME/DIA: _____

JOB NUMBER: _____

WELL DEPTH - START OF SHIFT: 1820'
END OF SHIFT: 1980'

WATER LEVEL - START OF SHIFT: _____
END OF SHIFT: _____

FORMATION	FROM	TO
-----------	------	----

Drill = 2	FROM 1820'	TO 1980' 7 7/8" Pilot Hole
-----------	------------	----------------------------

ACCIDENT ON SITE? YES _____ NO <input checked="" type="checkbox"/> DESCRIBE: _____ 	WEATHER CONDITIONS: <u>Clear</u> DRILLING MUD USED: _____ WGT.: _____ VISCOSITY: _____ SPECIAL CONDITIONS/COMMENTS:
DRILLER: <u>BRUCE HARMAN</u> OWNER/ENG REP: _____	HELPERS: <u>JEFF, JASON</u>

DIVERSIFIED DRILLING CORPORATION DAILY DRILLING REPORT

DATE: 6-11-03

PROJECT: Ready Block

WELL NAME/DIA: _____

JOB NUMBER: #2077

WELL DEPTH - START OF SHIFT: 1980'
END OF SHIFT: 2102'

WATER LEVEL - START OF SHIFT: _____
END OF SHIFT: _____

FORMATION	FROM	TO
-----------	------	----

Drilled $7\frac{7}{8}$ " Pilot Hole FROM 1980' TO 2102'
Pulled out of Hole with Drill Pipe.
Circulated Hole 4 Hours

<p>ACCIDENT ON SITE? YES _____ NO <u><input checked="" type="checkbox"/></u></p> <p>DESCRIBE: _____</p>	<p>WEATHER CONDITIONS: <u>Clear</u></p> <p>DRILLING MUD USED: _____ WGT.: _____ VISCOSITY: _____</p> <p>SPECIAL CONDITIONS/COMMENTS: _____</p>
<p>DRILLER: <u>Bruce Harman</u></p> <p>OWNER/ENG REP: _____</p>	<p>HELPERS: <u>Jeff, Jason</u></p>

DIVERSIFIED DRILLING CORPORATION DAILY DRILLING REPORT

DATE: 6-12-03
WELL NAME/DIA: _____

PROJECT: Levy Creek
JOB NUMBER: #2077

WELL DEPTH - START OF SHIFT: 2100'
END OF SHIFT: _____

WATER LEVEL - START OF SHIFT: _____
END OF SHIFT: _____

FORMATION	FROM	TO
-----------	------	----

picked up equipment for logging

ACCIDENT ON SITE? YES _____ NO ✓
 DESCRIBE: _____

WEATHER CONDITIONS: clear
 DRILLING MUD
 USED: _____ WGT.: _____ VISCOSITY: _____
 SPECIAL CONDITIONS/COMMENTS:

DRILLER: Bruce Harman
 OWNER/ENG REP: _____

HELPERS: Jeff, Jason

DIVERSIFIED DRILLING CORPORATION DAILY DRILLING REPORT

DATE: 6-18-03

PROJECT: Reedy Creek

WELL NAME/DIA: _____

JOB NUMBER: # 2077

WELL DEPTH - START OF SHIFT: 2100'
END OF SHIFT: _____

WATER LEVEL - START OF SHIFT: _____
END OF SHIFT: _____

FORMATION	FROM	TO
-----------	------	----

RIFLED UP LOGS AND KEPT WELL.

ACCIDENT ON SITE? YES _____ NO ✓
 DESCRIBE: _____

WEATHER CONDITIONS: Clear
 DRILLING MUD
 USED: _____ WGT.: _____ VISCOSITY: _____
 SPECIAL CONDITIONS/COMMENTS:

DRILLER: BRUCE HARMAN
 OWNER/ENG REP: _____

HELPERS: JEFF, JASON

DIVERSIFIED DRILLING CORPORATION DAILY DRILLING REPORT

DATE: LINE 23-23
WELL NAME/DIA: PEEY CREEK

PROJECT: PEEY CREEK
JOB NUMBER: 2077

WELL DEPTH - START OF SHIFT: 200
END OF SHIFT: 2100

WATER LEVEL - START OF SHIFT: _____
END OF SHIFT: _____

FORMATION FROM TO

07:00 Tampa - Orlando.
tripped out packer.
pulled off 20' of streaked pipe
made up packer. pressured filled with fluid
started in hole
 7:30 SECURED SITE

ACCIDENT ON SITE? YES _____ NO <input checked="" type="checkbox"/> DESCRIBE: _____ _____ _____	WEATHER CONDITIONS: <u>Clear</u> DRILLING MUD USED: _____ WGT.: _____ VISCOSITY: _____ SPECIAL CONDITIONS/COMMENTS: _____ _____
DRILLER: <u>THY</u> OWNER/ENG REP: <u>SFWIND</u>	HELPERS: <u>DENNIS</u> <u>JEFF</u> <u>JASAN</u>

DIVERSIFIED DRILLING CORPORATION DAILY DRILLING REPORT

DATE: JUNE 24-03
WELL NAME/DIA: _____

PROJECT: Reddy Creek
JOB NUMBER: 2077

WELL DEPTH - START OF SHIFT: 200
END OF SHIFT: 200

WATER LEVEL - START OF SHIFT: _____
END OF SHIFT: _____

FORMATION	FROM	TO
-----------	------	----

0700 on site continued tripping in pipe
1395 packer depth

1:00 inflated packer

Tripped in 100' 2" pipe & pump

pumped 3 hrs

Broke Down pipe line to helping tanks

2:30 secured site

ACCIDENT ON SITE? YES _____ NO

DESCRIBE: _____

WEATHER CONDITIONS:

Clear

DRILLING MUD

USED: _____ WGT.: _____ VISCOSITY: _____

SPECIAL CONDITIONS/COMMENTS:

DRILLER: TA 104

HELPERS: DENNIS

OWNER/ENG REP: SFW M.D.

Jeff
JASON

DIVERSIFIED DRILLING CORPORATION DAILY DRILLING REPORT

DATE: June 25-03
WELL NAME/DIA: _____

PROJECT: Reddy Creek
JOB NUMBER: 2077

WELL DEPTH - START OF SHIFT: 2100
END OF SHIFT: 3100

WATER LEVEL - START OF SHIFT: _____
END OF SHIFT: _____

FORMATION **FROM** **TO**

0700 on site

8:00-9:30 ED R on site began Testing

11:30 concluded Test

standby for recovery

2:00 - well recovered - deflated packer.

came out of hole.

7:30 secured site

ACCIDENT ON SITE? YES _____ NO

DESCRIBE: _____

WEATHER CONDITIONS: Clear

DRILLING MUD

USED: _____ WGT.: _____ VISCOSITY: _____

SPECIAL CONDITIONS/COMMENTS: _____

DRILLER: TH 4

OWNER/ENG REP: SOFWIND.

HELPERS: DENNIS
JEFF
JASON

DIVERSIFIED DRILLING CORPORATION DAILY DRILLING REPORT

DATE: June 26-03
WELL NAME/DIA:

PROJECT: Roady Creek
JOB NUMBER: 2070

WELL DEPTH - START OF SHIFT: 2100
END OF SHIFT: 2100

WATER LEVEL - START OF SHIFT: _____
END OF SHIFT: _____

FORMATION FROM TO

07:00 on site Tripped in hole to 2070
sent Dennis to rock
2 pallet. RIVER Rock.

9:00 started pumping rock in hole pulled up 2 rods
continued placing rock in hole Tripped 1995'

7:30 secured site

total Rock 3

ACCIDENT ON SITE? YES <input type="checkbox"/> NO <input checked="" type="checkbox"/> DESCRIBE:	WEATHER CONDITIONS: <u>Clear Rain late pm</u> DRILLING MUD USED: WGT.: VISCOSITY: SPECIAL CONDITIONS/COMMENTS:
DRILLER: <u>JA by</u> OWNER/ENG REP: <u>SFWMD.</u>	HELPERS: <u>JEFF</u> <u>JASON</u> <u>DENNIS</u>

DIVERSIFIED DRILLING CORPORATION DAILY DRILLING REPORT

DATE: June 27-03

PROJECT: Reedy Creek

WELL NAME/DIA:

JOB NUMBER: 2077

WELL DEPTH - START OF SHIFT: 2100

WATER LEVEL - START OF SHIFT: _____

END OF SHIFT: 2100

END OF SHIFT: _____

FORMATION	FROM	TO
-----------	------	----

07:00 - on site

Dennis - Jason picked up 2 pallet river rock
Started dumping in hole
TAGGED AT 1920'

1:00 SECURED site

1:00-3:00 Orlando to Tampa

4:00- off duty Tampa to Arcadia

2 1/2 yds. Rock

ACCIDENT ON SITE? YES _____ NO <input checked="" type="checkbox"/> DESCRIBE: _____ _____ _____	WEATHER CONDITIONS: DRILLING MUD USED: _____ WGT.: _____ VISCOSITY: _____ SPECIAL CONDITIONS/COMMENTS: _____ _____
DRILLER: <u>THG</u> OWNER/ENG REP: <u>SPRIND</u>	HELPERS: <u>JEFF</u> <u>DENNIS</u> <u>JASON</u>

DIVERSIFIED DRILLING CORPORATION DAILY DRILLING REPORT

DATE: June 30 - 03

PROJECT: Reedy Creek

WELL NAME/DIA: _____

JOB NUMBER: 2077

WELL DEPTH - START OF SHIFT: _____
END OF SHIFT: _____

WATER LEVEL - START OF SHIFT: _____
END OF SHIFT: _____

FORMATION	FROM	TO
-----------	------	----

<p>07:00 - 9:30 - <u>Timpa to change</u> <u>Tripped out unplugged pipe</u> <u>Tripped in</u></p>		
------------------------------------------------------------------------------------------------------------	--	--

<p>2:00 <u>rock on site began back filling</u> <u>Tagged 1902</u> <u>pumped 16sk cement.</u></p>		
------------------------------------------------------------------------------------------------------------	--	--

<p>4:00 <u>ADDED more Rock.</u> <u>Tagged cement At. 1953'</u></p>		
-------------------------------------------------------------------------	--	--

<p>7:30 <u>SECURED site</u></p>		
---------------------------------	--	--

6 1/2 yds

<p>ACCIDENT ON SITE? YES _____ NO <input checked="" type="checkbox"/></p> <p>DESCRIBE: _____</p>	<p>WEATHER CONDITIONS: <u>Clear</u></p> <p>DRILLING MUD USED: _____ WGT.: _____ VISCOSITY: _____</p> <p>SPECIAL CONDITIONS/COMMENTS: _____</p>
<p>DRILLER: <u>TK by</u></p> <p>OWNER/ENG REP: <u>SFWMD</u></p>	<p>HELPERS: <u>Jason</u> <u>Jeff</u></p>

DIVERSIFIED DRILLING CORPORATION DAILY DRILLING REPORT

DATE: July 1-03
WELL NAME/DIA: _____

PROJECT: Reddy Creek
JOB NUMBER: 2077

WELL DEPTH - START OF SHIFT: 2100
END OF SHIFT: 2100

WATER LEVEL - START OF SHIFT: _____
END OF SHIFT: _____

FORMATION	FROM	TO
-----------	------	----

0700 - on site continued back filling back filled to 1452'		
3:00 pumped 20 sk cement stand by to set up		
6:00 pumped rock.		
7:30 secured site		

20 sk cement
Byrd's Rock

ACCIDENT ON SITE? YES <input type="checkbox"/> NO <input checked="" type="checkbox"/>	WEATHER CONDITIONS: <u>Clear.</u>
DESCRIBE: _____	DRILLING MUD USED: _____ WGT.: _____ VISCOSITY: _____
_____	SPECIAL CONDITIONS/COMMENTS: _____
DRILLER: <u>Th. Coy</u>	HELPERS: <u>Dennis</u> <u>Jeff</u> <u>Jason</u>
OWNER/ENG REP: <u>FWMD</u>	

DIVERSIFIED DRILLING CORPORATION DAILY DRILLING REPORT

DATE: July 2-03
WELL NAME/DIA: _____

PROJECT: Redy Creek
JOB NUMBER: 2077

WELL DEPTH - START OF SHIFT: _____
END OF SHIFT: _____

WATER LEVEL - START OF SHIFT: _____
END OF SHIFT: _____

FORMATION	FROM	TO
-----------	------	----

0700 - on site

Dumped remaining rock on site

2:00 rock arrived

Began dumping in rock

Back filled to 1505'

pumped cement

7:30 secured site

5yds 20sk cement

ACCIDENT ON SITE? YES <input type="checkbox"/> NO <input type="checkbox"/>	WEATHER CONDITIONS:
DESCRIBE:	DRILLING MUD
	USED: WGT.: VISCOSITY:
	SPECIAL CONDITIONS/COMMENTS:
DRILLER:	HELPERS:
OWNER/ENG REP:	

DIVERSIFIED DRILLING CORPORATION DAILY DRILLING REPORT

DATE: July 3rd 03
WELL NAME/DIA: _____

PROJECT: Leedy Creek
JOB NUMBER: 2072

WELL DEPTH - START OF SHIFT: _____
END OF SHIFT: _____

WATER LEVEL - START OF SHIFT: _____
END OF SHIFT: _____

FORMATION	FROM	TO
-----------	------	----

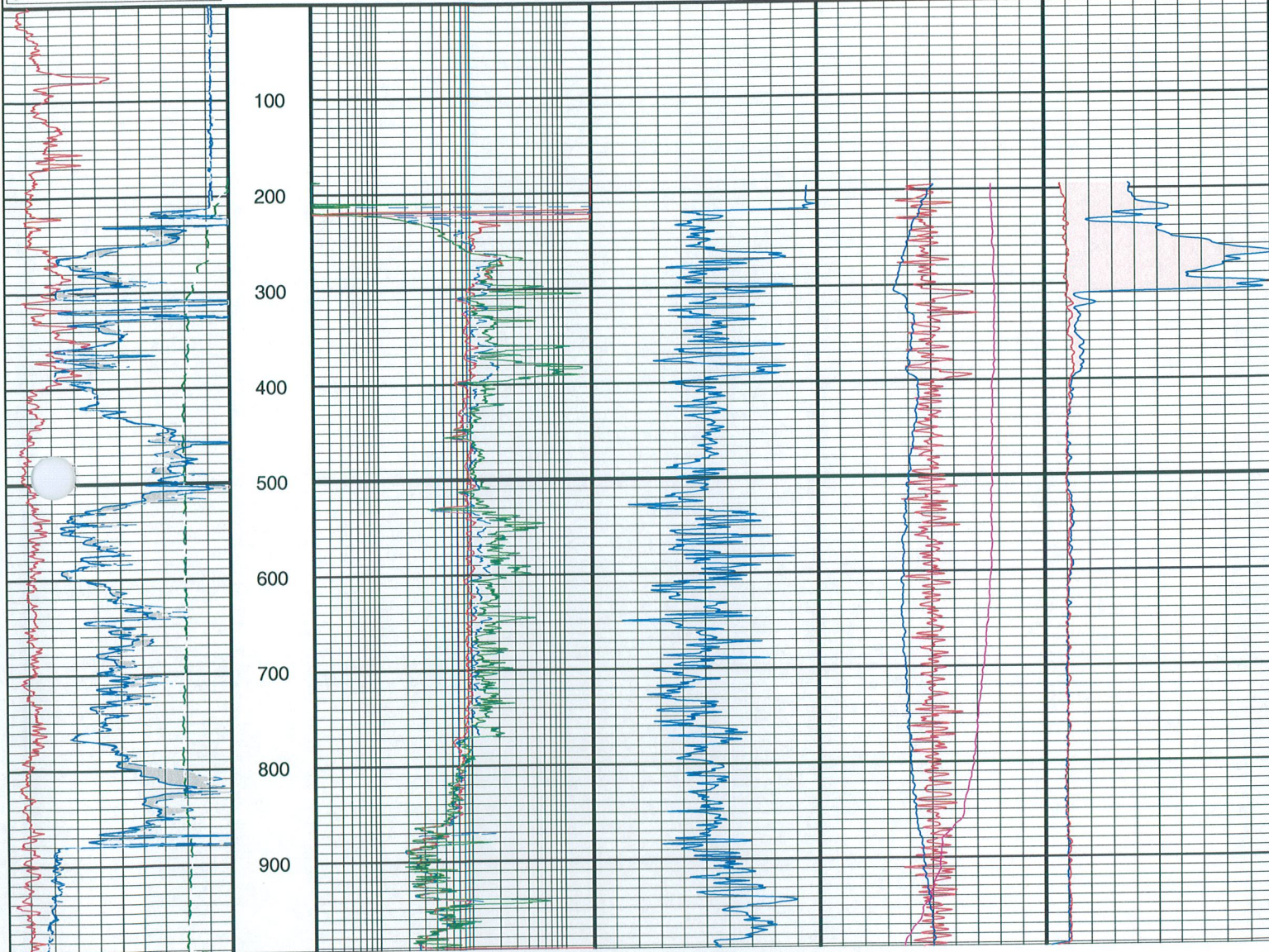
0700	Tagged cement, 1446'	
	ADDED remaining rock	
	Tagged 1380'	
11:00	Secured site	
1:00	Tampa	

total Rock
for hole
6yds. 8100 - 1380' 24 1/2 yds

ACCIDENT ON SITE? YES _____ NO <input checked="" type="checkbox"/>	WEATHER CONDITIONS:
DESCRIBE:	DRILLING MUD
	USED: WGT.: VISCOSITY:
	SPECIAL CONDITIONS/COMMENTS:
DRILLER: <u>THG</u>	HELPERS: <u>JASON</u> <u>JEFF</u>
OWNER/ENG REP: <u>SFWIND</u>	

ORF-60_Run 3
 18 Apr 2003 @ 15:05
 DEPTH (FT)
 Interval: 0.00 to 993.00
 Depth Scale Ratio: 1/2000

0	GR GAPI	100	DEPTH FT	2	RILD Ohm-m	2000	200	DT usec/ft	50	-0.25	DTMP degF	0.25	0	FLOWN cps	200
-160	SP mV	40		2	RILM Ohm-m	2000				70	TEMP degF	80	0	FLWNS cps	200
8	XCAL in	18		2	RLL3 Ohm-m	2000				0	FRES	40			
8	YCAL in	18													



ORF-60_Run 4
 18 Apr 2003 @ 16:21
 DEPTH (FT)
 Interval: 0.00 to 1350.00
 Depth Scale Ratio: 1/2000

0	GR GAPI	100	2	RILD Ohm-m	2000	200	DT usec/ft	50	-0.25	DTMP degF	0.25	0	FLOWP cps	75
-160	SP mV	40	2	RILM Ohm-m	2000				70	TEMP degF	80	0	FLOWN cps	75
10	XCAL in	30	2	RLL3 Ohm-m	2000				0	FRES	40			
10	YCAL in	30							0	S_FRES	40			
									70	S_TEMP degF	80			

