

Company **Rowe Well Drilling Co.**  
 Well **OSF-105**  
 Field **S-65A Canal**  
 County **Osceola**  
 State/Prv **Florida**

Location **S-65A Canal - SHWMD**  
 LAT.: **N27 39' 30.0"**  
 LONG.: **W081 07'58.8"**

Company **Rowe Well Drilling Co.**  
 Well **OSF-105**  
 Field **S-65A Canal**  
 County **Osceola**  
 State/Prv **Florida**

Location **S-65A Canal - SHWMD**  
 LAT.: **N27 39' 30.0"**  
 LONG.: **W081 07'58.8"**

Other Services  
 XYCR  
 FCT  
 VIDEO

Permanent Datum  
 Log Measured From  
 Drilling Measured From

Elevation  
 G.L.  
 G.L.  
 G.L.

K.B.  
 D.F.  
 G.L.

Date **2-JUL-2007**  
 Run Number **ONE-B**  
 Depth Driller **1220'**  
 Depth Logger **1220'**  
 Depth Internal **1220'**  
 Total Log Interval **1849'**  
 Open Hole Size **11"**  
 Type Fluid **H2O**  
 Density / Viscosity **N/A**  
 Max. Recorded Temp. **N/A**  
 Estimated Cement Top **NA**

Time Well Ready **14:30 7/2/07**  
 Time Log on Bottom **14:30 7/2/07**  
 Location **FL 08104**  
 Recorder **Fl. Messer**  
 Witnessed By **S. Miller/C. Miller**  
 Witnessed By **S. Anderson (SHWMD)**

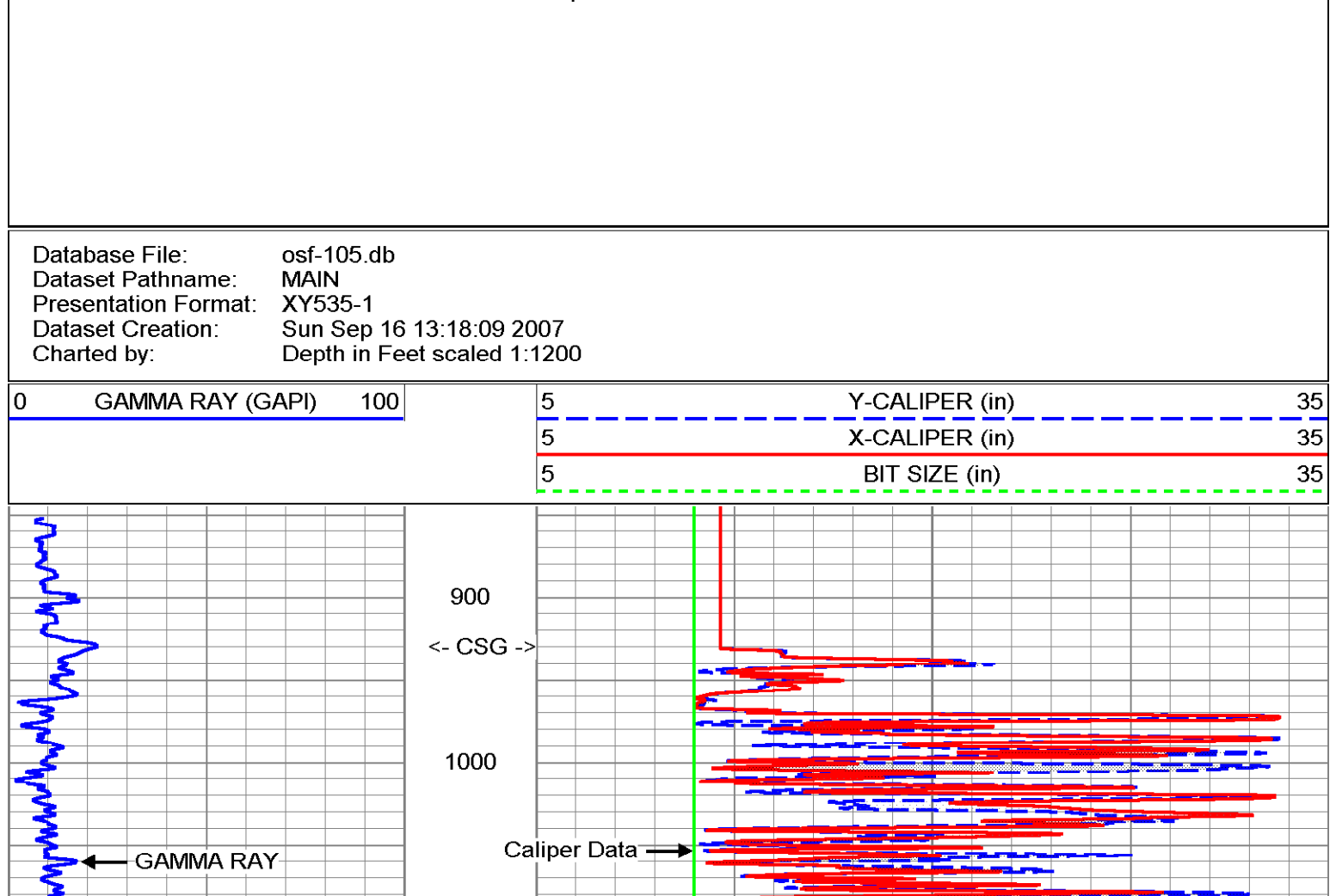
Run Number **ONE**  
 Bit **11"**  
 From **990'**  
 To **1220'**  
 Size **120#**  
 Weight **From**  
 To

Bottom Record **12"**  
 Surface String **12" ID**  
 Production String **930'**

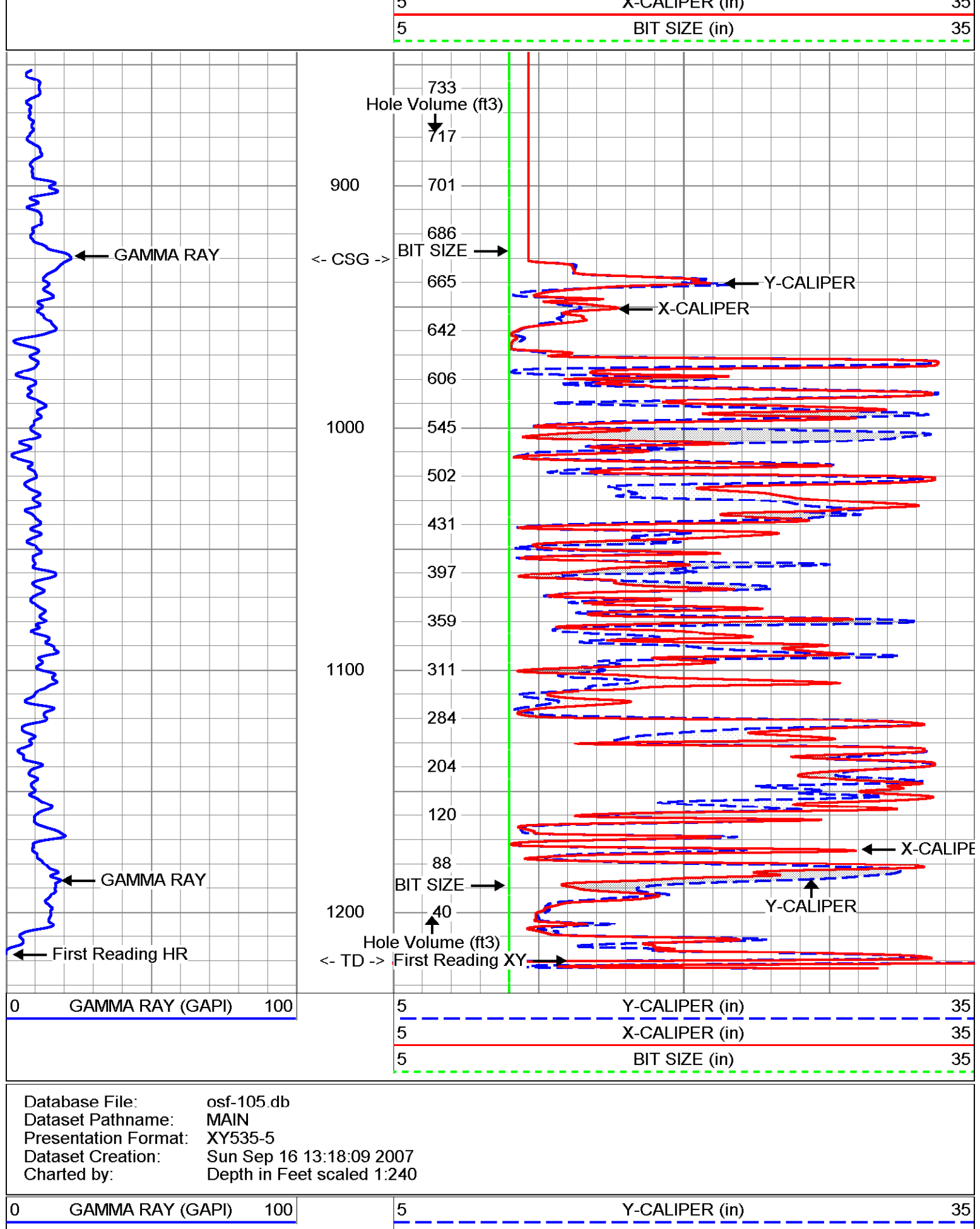
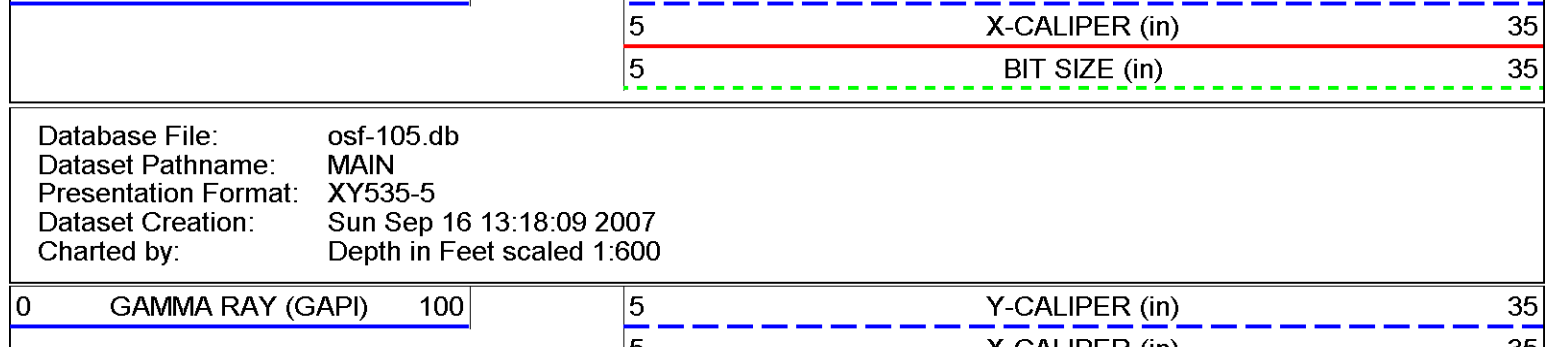
Casing Record **12"**  
 Surface String **12" ID**  
 Production String **930'**

2007181 P.O.#. Job No. \*FIELD PRINT\*

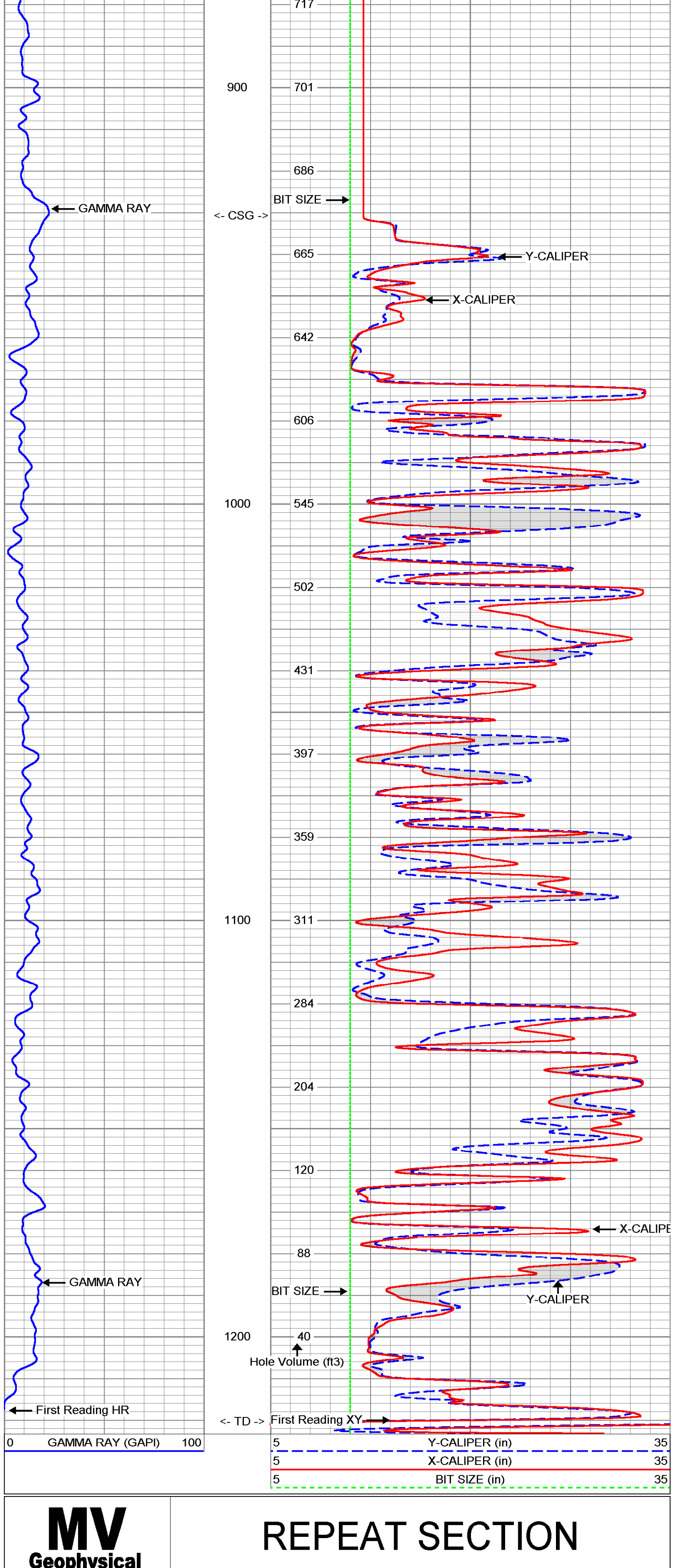
All interpretations are opinions based on inferences from electrical or other measurements and we cannot and do not guarantee the accuracy or correctness of any interpretation, and we shall not, except in the case of gross or willful negligence on our part, be liable or responsible for any loss, costs, damages, or expenses incurred or sustained by anyone resulting from any interpretation made by any of our officers, agents or employees. These interpretations are also subject to our general terms and conditions set out in our current Price Schedule.



Database File: osf-105.db  
 Dataset Pathname: MAIN  
 Presentation Format: XY535-1  
 Dataset Creation: Sun Sep 16 13:18:09 2007  
 Charted by: Depth in Feet scaled 1:2000



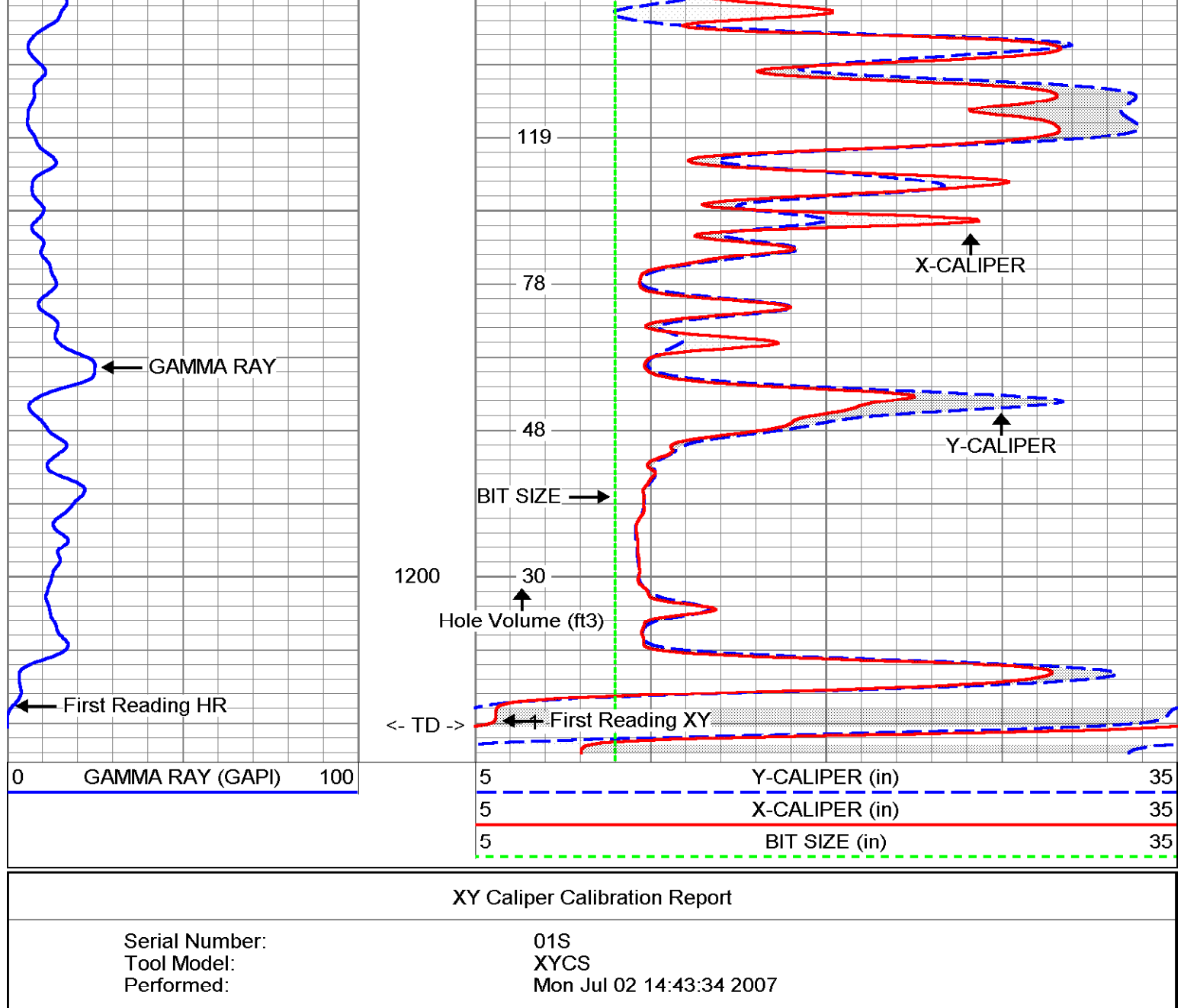
Database File: osf-105.db  
 Dataset Pathname: MAIN  
 Presentation Format: XY535-5  
 Dataset Creation: Sun Sep 16 13:18:09 2007  
 Charted by: Depth in Feet scaled 1:240



**MV Geophysical**

**REPEAT SECTION**

Database File: osf-105.db  
 Dataset Pathname: REPEAT  
 Presentation Format: XY535-5  
 Dataset Creation: Sun Sep 16 13:04:44 2007  
 Charted by: Depth in Feet scaled 1:240

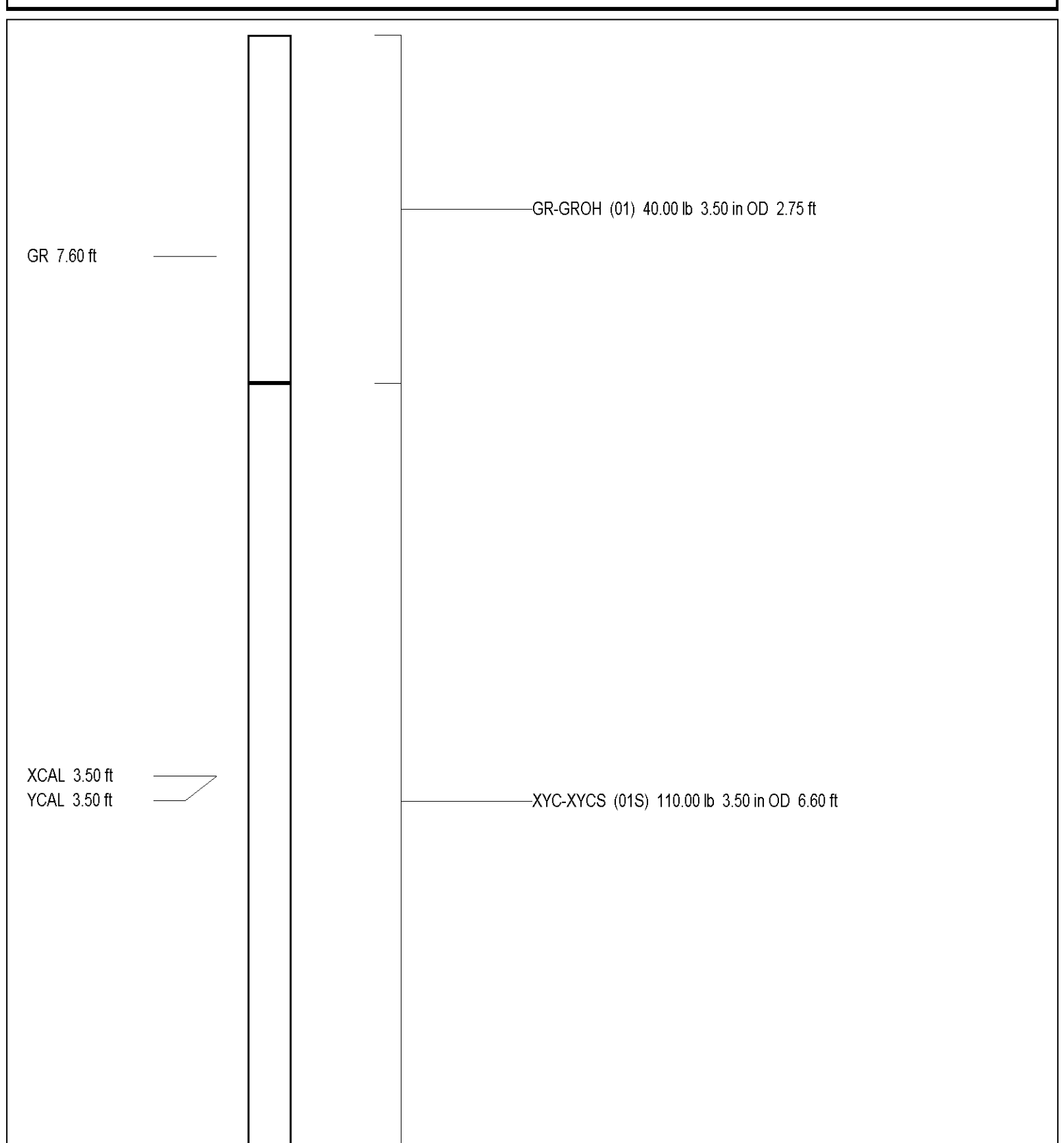


XY Caliper Calibration Report

Serial Number:	01S		
Tool Model:	XYCS		
Performed:	Mon Jul 02 14:43:34 2007		
Small Ring:	12	in	
Large Ring:	33	in	
Reading with Small Ring:	1205	1206.1	cps
Reading with Large Ring:	1984.2	1853	cps
Gain:	0.0269507	0.0324625	
Offset:	-20.47566	-27.153	

Gamma Ray Calibration Report

Serial Number:	01	
Tool Model:	GROH	
Performed:	Mon Jul 02 14:45:34 2007	
Calibrator Value:	120	GAPI
Background Reading:	4.666	cps
Calibrator Reading:	123.667	cps
Sensitivity:	1.00839	GAPI/cps



Dataset: run1/pass1  
 Total Length: 9.35 ft  
 Total Weight: 150.00 lb  
 O.D.: 3.50 in