



SOUTH FLORIDA WATER MANAGEMENT DISTRICT

Rev. 1/16

DESIGNATION: OSF110	PROJECT: OSF-110 & OSS-111 Well Sites
ESTABLISHED BY: SOUTH FLORIDA WATER MANAGEMENT DISTRICT	SURVEYOR: Strickland
RECOVERED BY:	LAST DATE: 07-may-18

GEOGRAPHIC POSITION

SECTION 12	TOWNSHIP 25 SOUTH	RANGE 31 EAST
COUNTY: Osceola	NAME OF QUADRANGLE: Narcoossee	GEOGRAPHIC INDEX OF QUAD: 3510
HORIZONTAL DATUM: 1927 (1983) Other _____ ZONE (E) or W		
VERTICAL DATUM: MSL 1929 (1988) Other _____		
VERTICAL ACCURACY: 1 2 (3)		
STATE PLANE COORDINATE	(N) Y= 1450997	(E) X= 601982
		NAVD 88 EL. 62.593 NGVD 29 EL. 63.666 (Corpscon)
CORPSCON 6.0.1 CONVERSION FACTOR (NAVD88 TO NGVD29): +1.073		
LATITUDE: 28°19'30.95"		LONGITUDE: 81°10'06.32"

RECOVERY DATA

Stamping: OSF 110 2017 BM EL

To Reach: From the junction of U.S. Highway 192, 441 (13th Street) and County Road 523 (Vermont Avenue, Canoe Creek Road) in St. Cloud, go east on U.S. Highway 192, 441 (13th Street, East Bronson Highway) for 3.0 miles to the intersection of State Road 15; continue east on U.S. Highway 192, 441 (Bronson Highway) for 1.25 miles to the junction of Nova Road (County Road 532) on the left; turn left on Nova Road (County Road 532) and go northeast for 3.65 miles to the west end of South Florida Water Management District's Canal 32C and the junction of Sungrove Lane; turn left onto Sungrove Lane and go north for approximately 100.0 feet to a locked gated; continue north on Sungrove Lane for 4.2 miles to South Florida Water Management District Canal 30; turn right, southeast and go 300 feet to the OSF110 well site and station location.

The station is a 3¼-inch brass disk stamped "**OSF 110 2017 BM EL**" set on the northerly side of the well in the concrete base. The station is located 1.1 foot from the northerly side of the 4 foot by 4-foot base and 0.6 of a foot from the westerly side of the concrete base.

NGS SOURCE BENCHMARK: **W577 (DB6218) El. 62.985 NAVD88 and X577 (D6219) El. 62.317 NAVD88.** Note: NGS OS96 (DB6224) published elevation 61.55 NAVD88 not used. A closed level line between W577 and X 577 established a new elevation of 61.503 NAVD88.

FIELD BOOK: **MISC 7E PAGES 1 thru 3**

PICTURES



3¼" Brass disk stamped
"OSF 110 2017 EL"
 El. **62.593 NAVD88**



Overall Site

Looking Northerly (Not to scale)



SOUTH FLORIDA WATER MANAGEMENT DISTRICT

Rev. 1/16

SKETCH (Field Book Misc 7E page 3) Revised 07-may-18

3 MISC FB#7E 8-7-17

SEC 12 TWP 25 RGE 31

LOCATE WELL & BM OSF 111

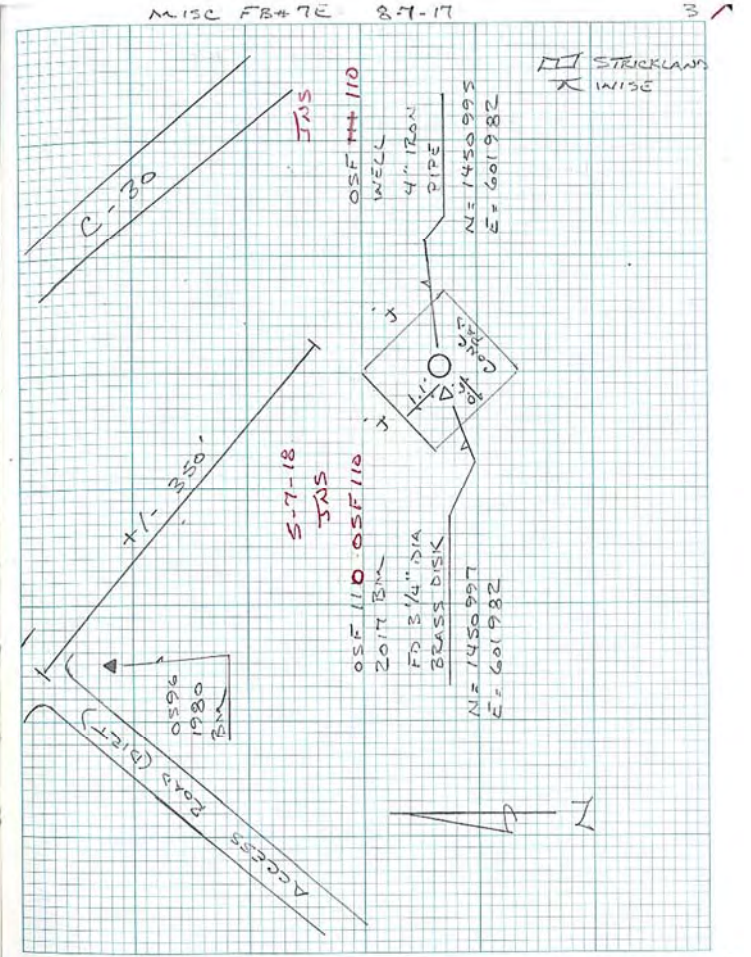
FILE NAME = DESERT RANCH WELL

REF : MISC FB# 7B PAGE-63

BASE @ PT 1131 FD 5/8 IRC SSMC
TRAIL PT

CONTROL POINT	N	E
1132/SO11 5/8" IRC SSMC TRAIL PT	-0.022	0.028
SO12 BM OSF 111 2017		
SO13 OSF 111 WELL		

* 5-7-18 OPUS OS 96 1980 HI: 2M ORCUNIT 8425
START = 10:21 AM END = 2:29 PM
NOTE: CHANGE THE DESIGNATION of OSF 111 BM 2017
to OSF 110 BM 2017



SEC	12	TWP	25	RGE	31
	ESTABLISH NAVD 88 @ WELL SITE				
	OSF III NEWLY DRILLED				
	110				
	FILE NAME = OSF III				
STA	PT #	EL	BM EL		
W 577	1		62.99		
2003			NAVD 88		
OS96	5	61.507	61.55		
1980			PUBLISHED		
		{ 61.503 }			
		ADJ			
X 577	15	63.33	63.32		
		ERROR =	-0.01		
LINE 3					
OS96	20	61.507	* 61.503		
			* ADJ		
OSF III	17	62.597	62.593		
			ADJ		
OS96	19	61.51			

EQUIP USED DINI LEVEL
SERIAL # 771295
& BAR CODE ROD

STRICKLAND
WISE

COMMENTS

BM W 577 2003 FLIPPED BRASS DISK FID GOOD COND

BM OS96 1980 SFIMAN'S ALUM CAP FID GOOD COND

BM X 577 2003 FLIPPED BRASS DISK FID GOOD COND

BM OS96 1980 SFIMAN'S ALUM CAP

BM OSF III FID 3 1/4" DIA. BRASS DISK (NO STAMPING)
IN 4' X 4' CONC WELL PAD LOCATED 0.6' EAST of
WEST EDGE of CONC PAD & 1.1' SOUTH of NORTH EDGE of
CONC PAD. SFIMAN'S STAMPED BRASS DISK
"OSF III 2017 BM EL"

BM OS96 1980 AS ABOVE

SEC 12 ~~TWP~~ 25 RGE 31

CONT'D FROM PAGE - 1

STA	PT#	EL	BM EL
OSF III	50	62.597	62.593 ADJ
REF PT	51	65.267	65.262 ADJ
W CON PAD	52	62.554	
N CON PAD	53	62.606	
E CON PAD	54	62.559	
S CON PAD	55	62.548	
W GRND	56	62.097	
N "	57	62.156	
E "	58	62.056	
S "	59	61.967	
OSF III	60	62.598	62.593 ADJ

~~ST~~ STRICKLANDS
WISE

COMMENTS

BM OSF III 2017 SEE PAGE - 1 & 3 SKETCH PG - 3

REF PT "X" ATOP of 4" IRON WELL CASING N. SIDE

CONC PAD IN CORNER

" " N "

" " E "

" " S "

GROUNDS @ W "

" " N "

" " E "

" " S "

BM OSF III 2017 AS ABOVE

SEC 12 TWP 2S RGE 31

LOCATE WELL & BM OSF III

FILE NAME = DESERET RANCH WELL

REF : MISC FB# 7B PAGE - 63

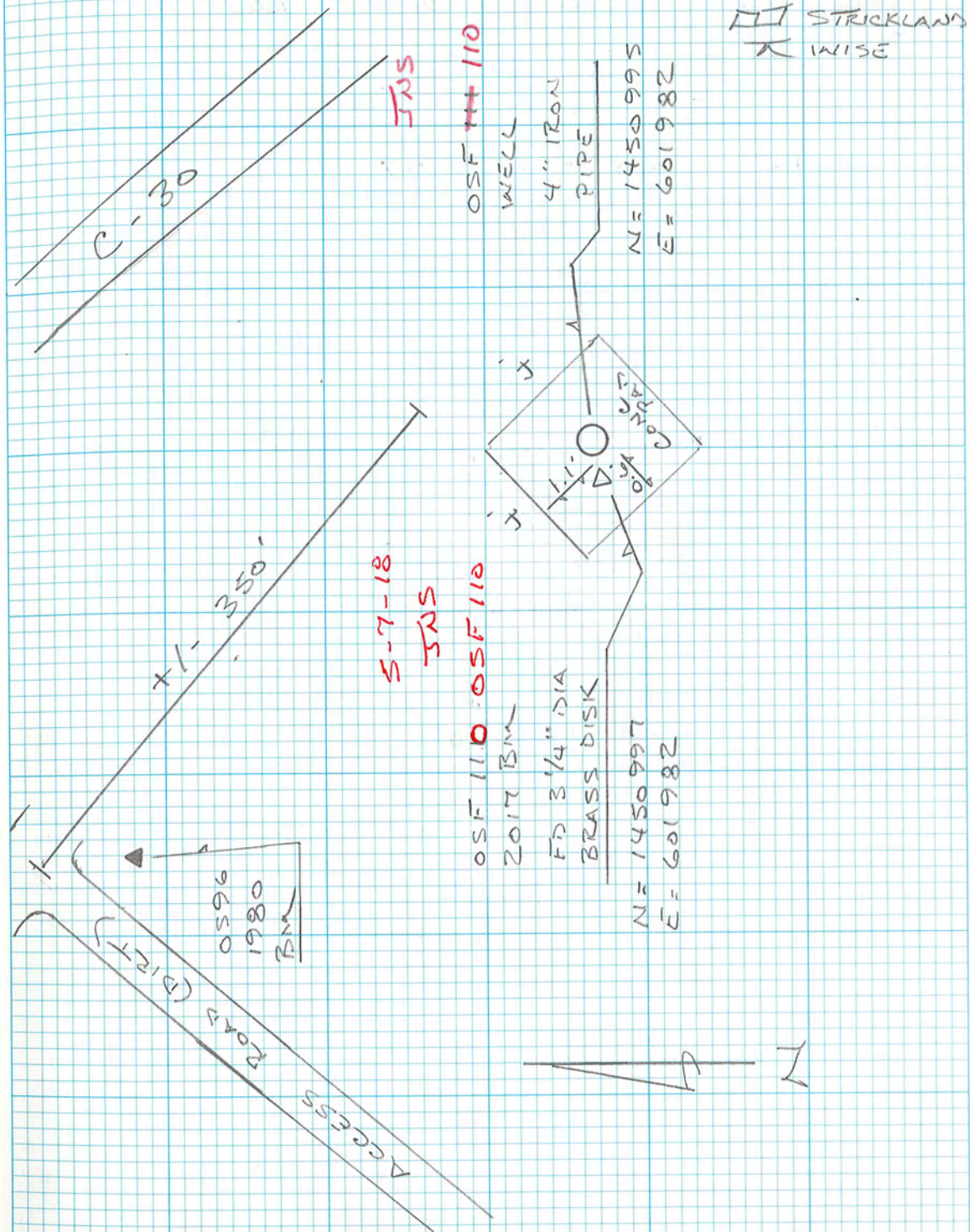
BASE @ PT 1131 FD 5/8 IRC SSMC
TRAV PT

CONTROL POINT	N	E
1132/5011 5/8" IRC "SSMC TRAV PT"	-0.022	0.028
5012 BM OSF III 2017		
5013 OSF III WELL		

* 5-7-18 OPUS OS 96 1980 HI: 2M OKCUNIT 8425

START = 10:21 AM END = 2:29 PM

NOTE : CHANGE THE DESIGNATION of OSF III BM 2017
TO OSF 110 BM 2017



The NGS Data Sheet

See file [dsdata.pdf](#) for more information about the datasheet.

```

PROGRAM = datasheet95, VERSION = 8.12.2
1      National Geodetic Survey,  Retrieval Date = AUGUST  8, 2017
DG6218 *****
DG6218 DESIGNATION -  W 577
DG6218 PID          -  DG6218
DG6218 STATE/COUNTY-  FL/OSCEOLA
DG6218 COUNTRY      -  US
DG6218 USGS QUAD    -  NARCOOSSEE (1970)
DG6218
DG6218                      *CURRENT SURVEY CONTROL
DG6218
DG6218* NAD 83(1986) POSITION- 28 19 17.      (N) 081 10 18.      (W) SCALED
DG6218* NAVD 88 ORTHO HEIGHT -   19.198 (meters)      62.99 (feet) ADJUSTED
DG6218
DG6218 GEOID HEIGHT   -      -28.090 (meters)                      GEOID12B
DG6218 DYNAMIC HEIGHT -       19.170 (meters)      62.89 (feet) COMP
DG6218 MODELED GRAVITY -   979,170.7 (mgal)                      NAVD 88
DG6218
DG6218 VERT ORDER    -  SECOND    CLASS I
DG6218
DG6218.The horizontal coordinates were scaled from a topographic map and have
DG6218.an estimated accuracy of +/- 6 seconds.
DG6218.
DG6218.The orthometric height was determined by differential leveling and
DG6218.adjusted by the NATIONAL GEODETIC SURVEY
DG6218.in September 2004.
DG6218
DG6218.No vertical observational check was made to the station.
DG6218
DG6218.Significant digits in the geoid height do not necessarily reflect accuracy.
DG6218.GEOID12B height accuracy estimate available here.
DG6218
DG6218.The dynamic height is computed by dividing the NAVD 88
DG6218.geopotential number by the normal gravity value computed on the
DG6218.Geodetic Reference System of 1980 (GRS 80) ellipsoid at 45
DG6218.degrees latitude (g = 980.6199 gals.).
DG6218
DG6218.The modeled gravity was interpolated from observed gravity values.
DG6218
DG6218;              North      East      Units  Estimated Accuracy
DG6218;SPC FL E    -   441,840.    183,170.    MT   (+/- 180 meters Scaled)
DG6218
DG6218_U.S. NATIONAL GRID SPATIAL ADDRESS: 17RMM831328(NAD 83)
DG6218
DG6218                      SUPERSEDED SURVEY CONTROL
DG6218
DG6218.No superseded survey control is available for this station.
DG6218
DG6218_MARKER: DD = SURVEY DISK
DG6218_SETTING: 7 = SET IN TOP OF CONCRETE MONUMENT
DG6218_STAMPING: W 577 2003

```

DG6218_MARK LOGO: FLDEP
 DG6218_PROJECTION: FLUSH
 DG6218_MAGNETIC: M = MARKER EQUIPPED WITH BAR MAGNET
 DG6218_STABILITY: C = MAY HOLD, BUT OF TYPE COMMONLY SUBJECT TO
 DG6218+STABILITY: SURFACE MOTION
 DG6218_SATELLITE: THE SITE LOCATION WAS REPORTED AS NOT SUITABLE FOR
 DG6218+SATELLITE: SATELLITE OBSERVATIONS - October 06, 2010

DG6218	HISTORY	- Date	Condition	Report By
DG6218	HISTORY	- 20030206	MONUMENTED	FLDEP
DG6218	HISTORY	- 20101006	GOOD	MOREKL

DG6218

DG6218 STATION DESCRIPTION

DG6218

DG6218'DESCRIBED BY FL DEPT OF ENV PRO 2003 (JLM)
 DG6218'THE MARK IS ABOUT 12.8 MI NORTHWEST OF HOLOPAW, 10.8 MI EAST-NORTHEAST
 DG6218'OF ST. CLOUD, 8.8 MI NORTHEAST OF ASHTON, IN SECTION 12, TOWNSHIP 25
 DG6218'SOUTH, RANGE 31 EAST.

DG6218'

DG6218'TO REACH THE MARK FROM THE JUNCTION OF U.S. HIGHWAY 192, 441 (13TH
 DG6218'STREET) AND COUNTY ROAD 523 (VERMONT AVENUE, CANOE CREEK ROAD) IN ST.
 DG6218'CLOUD, GO EAST ON U.S. HIGHWAY 192, 441 (13TH STREET, EAST BRONSON
 DG6218'HIGHWAY) FOR 3.0 MI TO THE INTERSECTION OF STATE ROAD 15, CONTINUE
 DG6218'EAST ON U.S. HIGHWAY 192, 441 (BRONSON HIGHWAY) FOR 1.25 MI TO THE
 DG6218'JUNCTION OF NOVA ROAD (COUNTY ROAD 532) ON THE LEFT, TURN LEFT ON
 DG6218'NOVA ROAD (COUNTY ROAD 532) AND GO NORTHEAST FOR 3.65 MI TO THE WEST
 DG6218'END OF CANAL C-32C AND THE JUNCTION OF SUNGROVE LANE, TURN LEFT ON
 DG6218'SUNGROVE LANE AND GO NORTH FOR APPROXIMATELY 100.0 FT TO A LOCKED
 DG6218'GATED, CONTINUE NORTH ON SUNGROVE LANE FOR 3.9 MI TO THE MARK ON THE
 DG6218'RIGHT, SET IN THE TOP OF A ROUND CONCRETE MONUMENT FLUSH WITH THE
 DG6218'GROUND AND LEVEL WITH SUNGROVE LANE.

DG6218'

DG6218'LOCATED 174.0 FT NORTHEAST OF A 5.0 FT DIAMETER OAK TREE, 25.5 FT
 DG6218'SOUTHEAST OF THE APPROXIMATE CENTERLINE AND 1.0 FT NORTHWEST OF A
 DG6218'BARBWIRE FENCE AND A CARSONITE WITNESS POST.

DG6218'

DG6218'NOTE A BAR MAGNET WAS IMBEDDED IN THE GROUND ON THE SOUTH SIDE OF THE
 DG6218'MONUMENT. NOTE FOR KEY CONTACT SOUTH FLORIDA WATER MANAGEMENT
 DG6218'DISTRICT AT (407) 686-8800.

DG6218

DG6218 STATION RECOVERY (2010)

DG6218

DG6218'RECOVERY NOTE BY MORGAN AND EKLUND INC 2010 (MB)

DG6218'RECOVERED AS DESCRIBED



The NGS Data Sheet

See file [dsdata.pdf](#) for more information about the datasheet.

```

PROGRAM = datasheet95, VERSION = 8.12.2
1      National Geodetic Survey,  Retrieval Date = AUGUST  8, 2017
DG6219 *****
DG6219 DESIGNATION - X 577
DG6219 PID - DG6219
DG6219 STATE/COUNTY- FL/OSCEOLA
DG6219 COUNTRY - US
DG6219 USGS QUAD - NARCOOSSEE (1970)
DG6219
DG6219 *CURRENT SURVEY CONTROL
DG6219
DG6219* NAD 83(1986) POSITION- 28 20 03. (N) 081 10 28. (W) SCALED
DG6219* NAVD 88 ORTHO HEIGHT - 19.299 (meters) 63.32 (feet) ADJUSTED
DG6219
DG6219 GEOID HEIGHT - -28.089 (meters) GEOID12B
DG6219 DYNAMIC HEIGHT - 19.270 (meters) 63.22 (feet) COMP
DG6219 MODELED GRAVITY - 979,172.4 (mgal) NAVD 88
DG6219
DG6219 VERT ORDER - SECOND CLASS I
DG6219
DG6219.The horizontal coordinates were scaled from a topographic map and have
DG6219.an estimated accuracy of +/- 6 seconds.
DG6219.
DG6219.The orthometric height was determined by differential leveling and
DG6219.adjusted by the NATIONAL GEODETIC SURVEY
DG6219.in September 2004.
DG6219
DG6219.No vertical observational check was made to the station.
DG6219
DG6219.Significant digits in the geoid height do not necessarily reflect accuracy.
DG6219.GEOID12B height accuracy estimate available here.
DG6219
DG6219.The dynamic height is computed by dividing the NAVD 88
DG6219.geopotential number by the normal gravity value computed on the
DG6219.Geodetic Reference System of 1980 (GRS 80) ellipsoid at 45
DG6219.degrees latitude (g = 980.6199 gals.).
DG6219
DG6219.The modeled gravity was interpolated from observed gravity values.
DG6219
DG6219; North East Units Estimated Accuracy
DG6219;SPC FL E - 443,250. 182,900. MT (+/- 180 meters Scaled)
DG6219
DG6219_U.S. NATIONAL GRID SPATIAL ADDRESS: 17RMM829342(NAD 83)
DG6219
DG6219 SUPERSEDED SURVEY CONTROL
DG6219
DG6219.No superseded survey control is available for this station.
DG6219
DG6219_MARKER: DD = SURVEY DISK
DG6219_SETTING: 7 = SET IN TOP OF CONCRETE MONUMENT
DG6219_STAMPING: X 577 2003

```


DG6219_MARK LOGO: FLDEP
 DG6219_PROJECTION: FLUSH
 DG6219_MAGNETIC: M = MARKER EQUIPPED WITH BAR MAGNET
 DG6219_STABILITY: C = MAY HOLD, BUT OF TYPE COMMONLY SUBJECT TO
 DG6219+STABILITY: SURFACE MOTION
 DG6219_SATELLITE: THE SITE LOCATION WAS REPORTED AS NOT SUITABLE FOR
 DG6219+SATELLITE: SATELLITE OBSERVATIONS - February 06, 2003

DG6219	HISTORY	- Date	Condition	Report By
DG6219	HISTORY	- 20030206	MONUMENTED	FLDEP

DG6219 STATION DESCRIPTION

DG6219'DESCRIBED BY FL DEPT OF ENV PRO 2003 (JLM)
 DG6219'THE MARK IS ABOUT 14.0 MI NORTHWEST OF HOLOPAW, 12.0 MI EAST-NORTHEAST
 DG6219'OF ST. CLOUD, 10.0 MI NORTHEAST OF ASHTON, IN SECTION 1, TOWNSHIP 25
 DG6219'SOUTH, RANGE 31 EAST.
 DG6219'
 DG6219'TO REACH THE MARK FROM THE JUNCTION OF U.S. HIGHWAY 192, 441 (13TH
 DG6219'STREET) AND COUNTY ROAD 523 (VERMONT AVENUE, CANOE CREEK ROAD) IN ST.
 DG6219'CLOUD, GO EAST ON U.S. HIGHWAY 192, 441 (13TH STREET, EAST BRONSON
 DG6219'HIGHWAY) FOR 3.0 MI TO THE INTERSECTION OF STATE ROAD 15, CONTINUE
 DG6219'EAST ON U.S. HIGHWAY 192, 441 (BRONSON HIGHWAY) FOR 1.25 MI TO THE
 DG6219'JUNCTION OF NOVA ROAD (COUNTY ROAD 532) ON THE LEFT, TURN LEFT ON
 DG6219'NOVA ROAD (COUNTY ROAD 532) AND GO NORTHEAST FOR 3.65 MI TO THE WEST
 DG6219'END OF CANAL C-32C AND THE JUNCTION OF SUNGROVE LANE, TURN LEFT ON
 DG6219'SUNGROVE LANE AND GO NORTH FOR APPROXIMATELY 100.0 FT TO A LOCKED
 DG6219'GATED, CONTINUE NORTH ON SUNGROVE LANE FOR 4.95 MI TO THE MARK ON THE
 DG6219'LEFT, SET IN THE TOP OF A ROUND CONCRETE MONUMENT FLUSH WITH THE
 DG6219'GROUND AND ABOUT 2.0 FT BELOW THE LEVEL SUNGROVE LANE.
 DG6219'
 DG6219'LOCATED 118.5 FT WEST OF THE APPROXIMATE CENTERLINE OF THE ROAD, 113.0
 DG6219'FT NORTH OF A 42-INCH OAK TREE ON THE EAST SIDE OF A FENCE, 66.2 FT
 DG6219'SOUTH OF A 42-INCH OAK TREE ON THE EAST SIDE OF A FENCE, 40.7 FT
 DG6219'NORTH OF A 4-INCH SQUARE CONCRETE RIGHT-OF-WAY MARKER NUMBER FCD
 DG6219'C30WPG, 29.0 FT SOUTH OF A 4-INCH SQUARE CONCRETE RIGHT-OF-WAY MARKER
 DG6219'NUMBER FCD G30W7 AND 1.0 FT EAST OF A BARBWIRE FENCE AND A CARSONITE
 DG6219'WITNESS POST.
 DG6219'
 DG6219'NOTE A BAR MAGNET WAS IMBEDDED IN THE GROUND ON THE SOUTH SIDE OF THE
 DG6219'MONUMENT. NOTE FOR KEY CONTACT SOUTH FLORIDA WATER MANAGEMENT
 DG6219'DISTRICT AT 407-686-8800.

