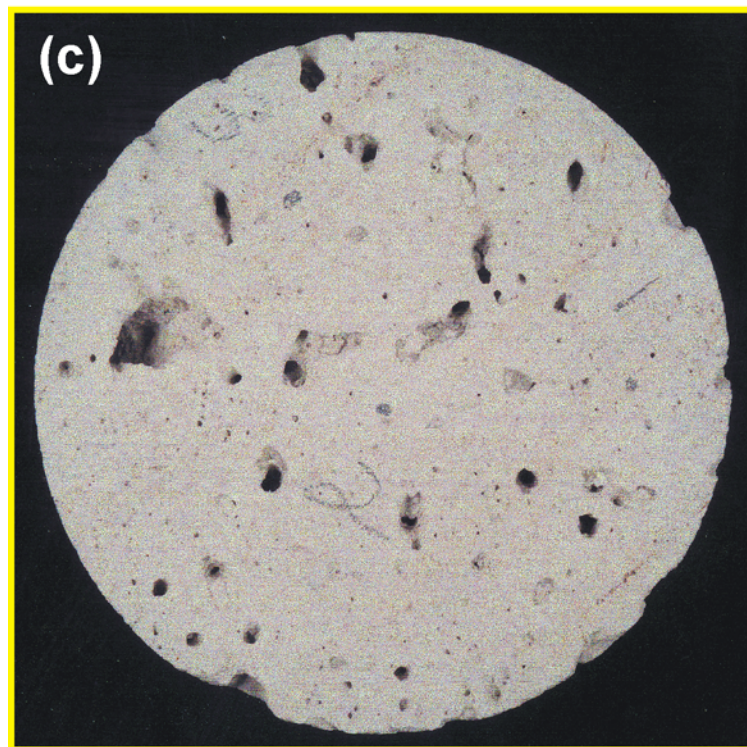
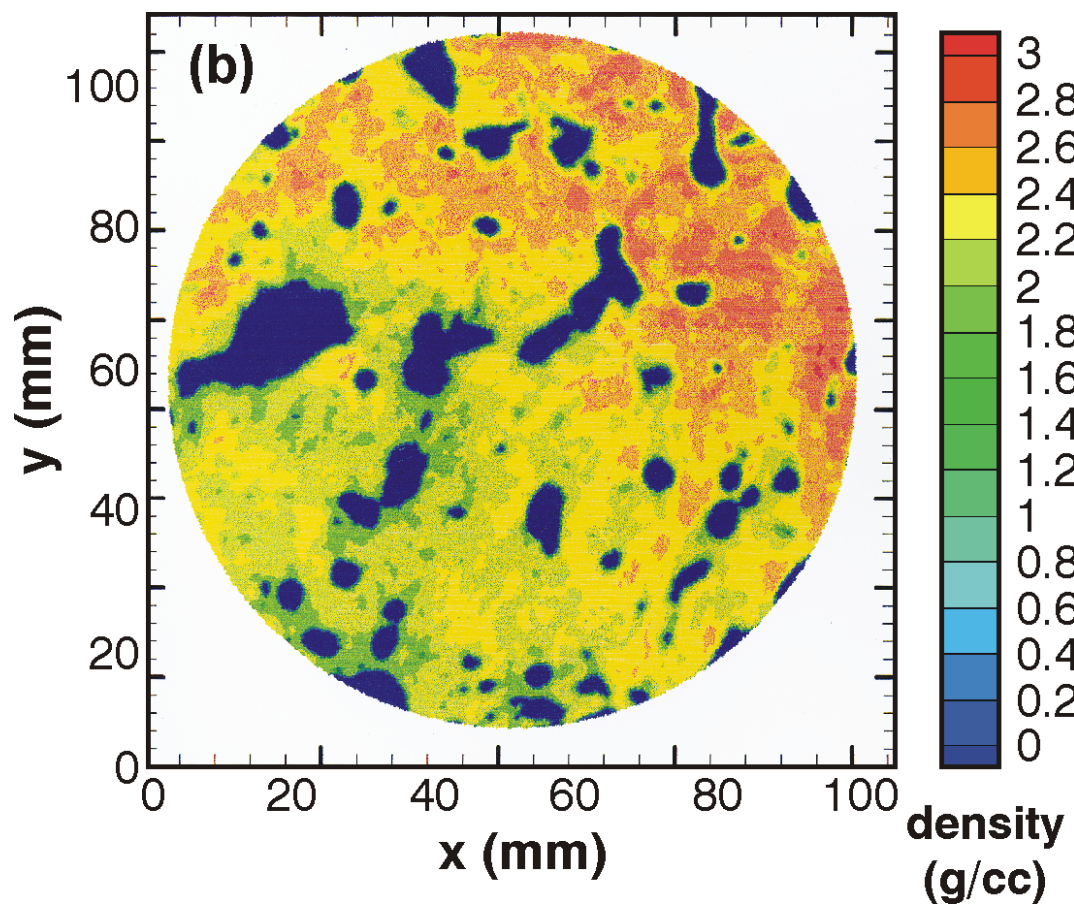


Figure 1



Continuation Fig. 1

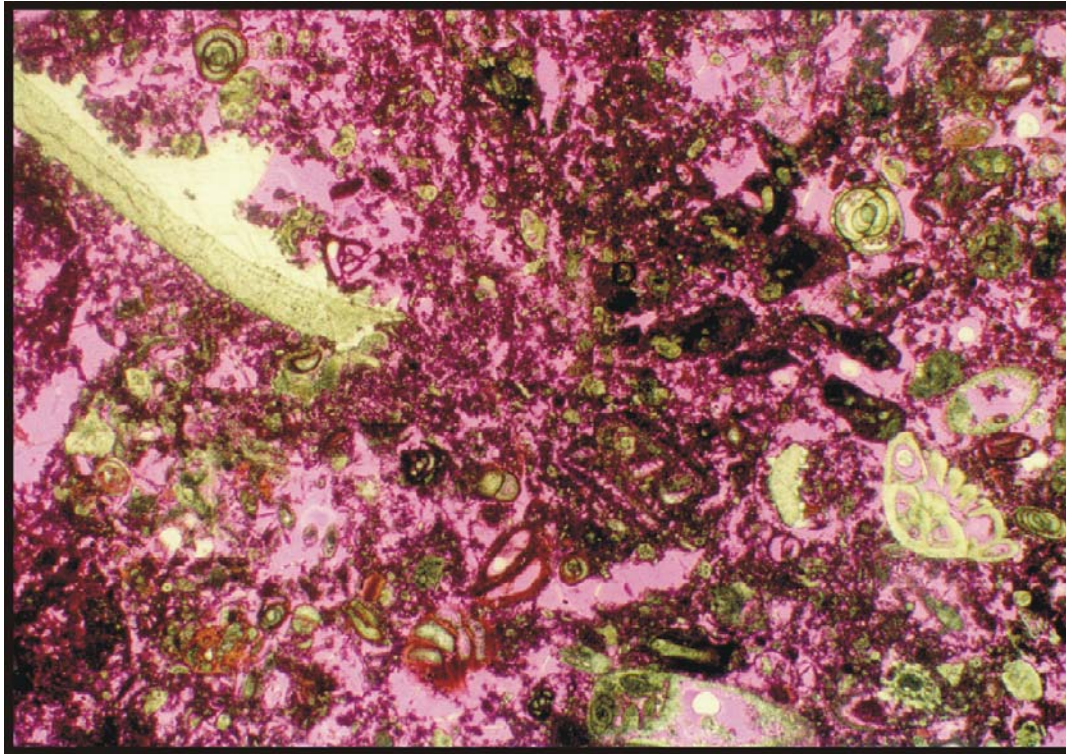


Figure 2



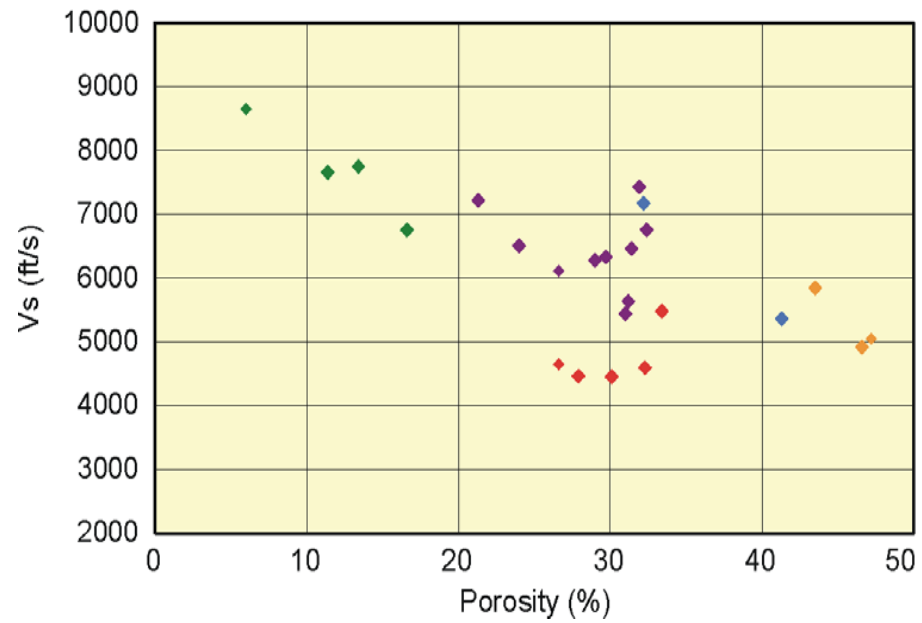
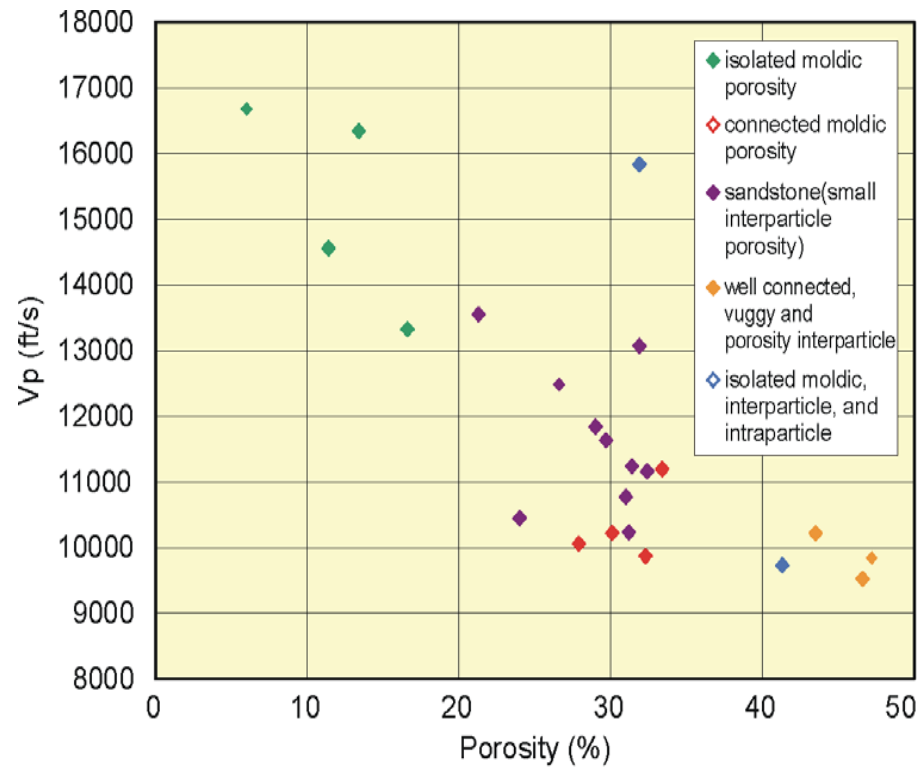


Figure 3

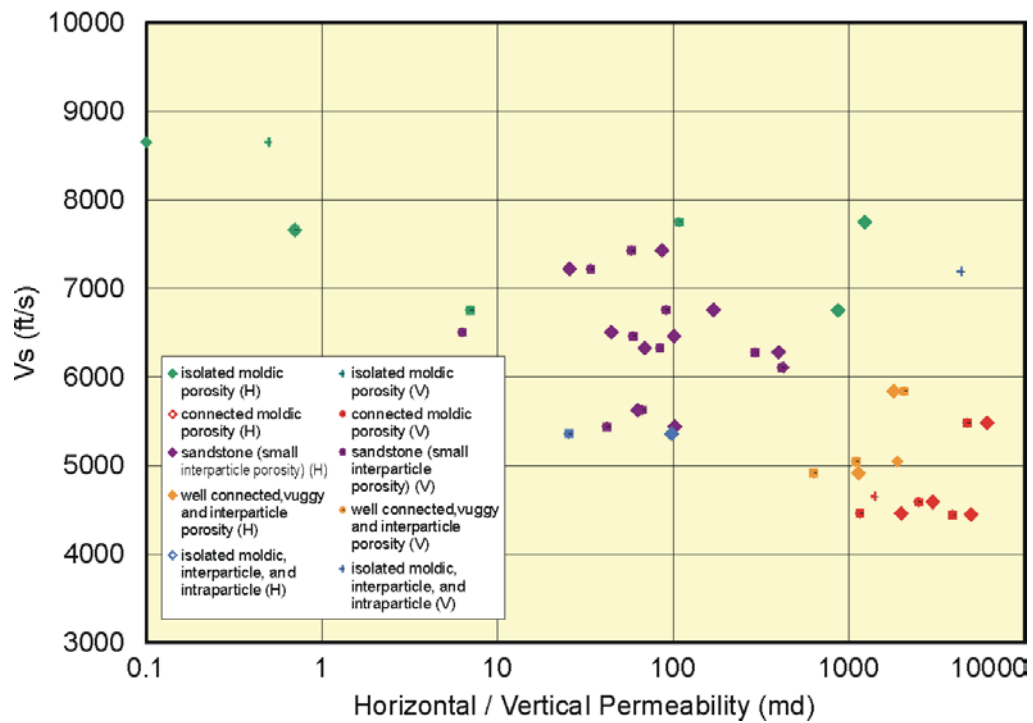
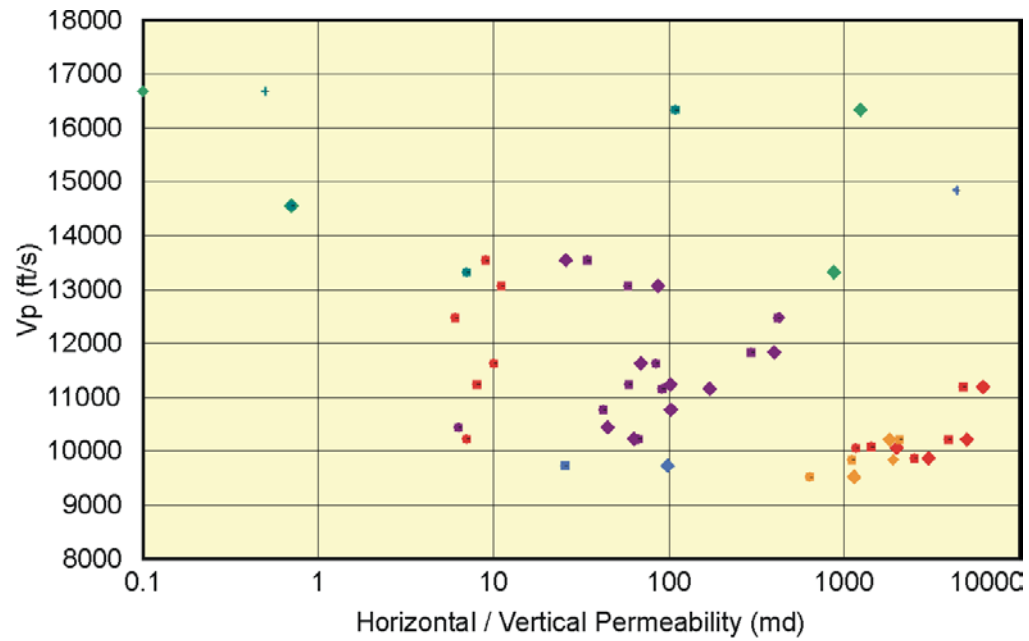


Figure 4

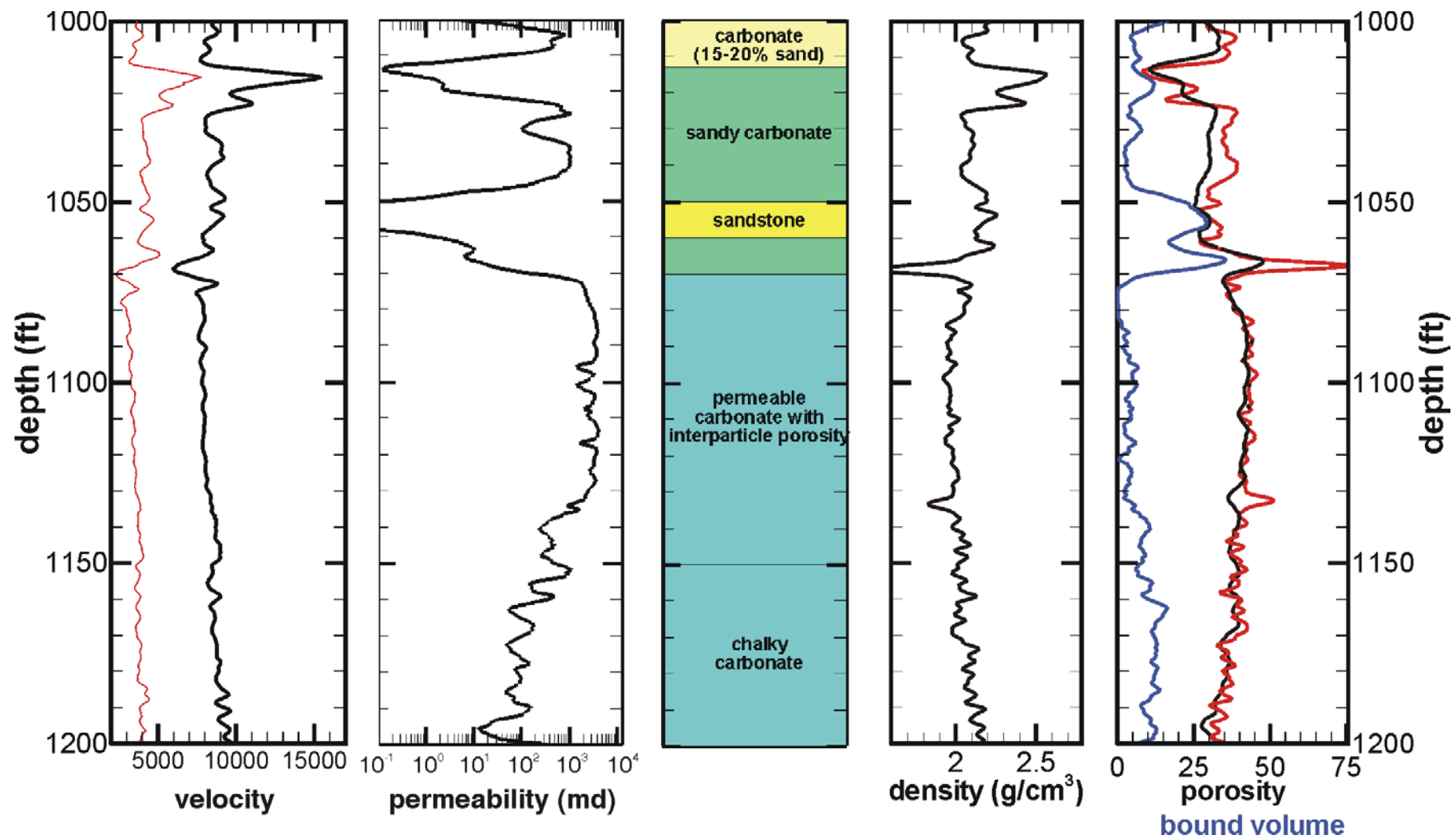


Figure 5

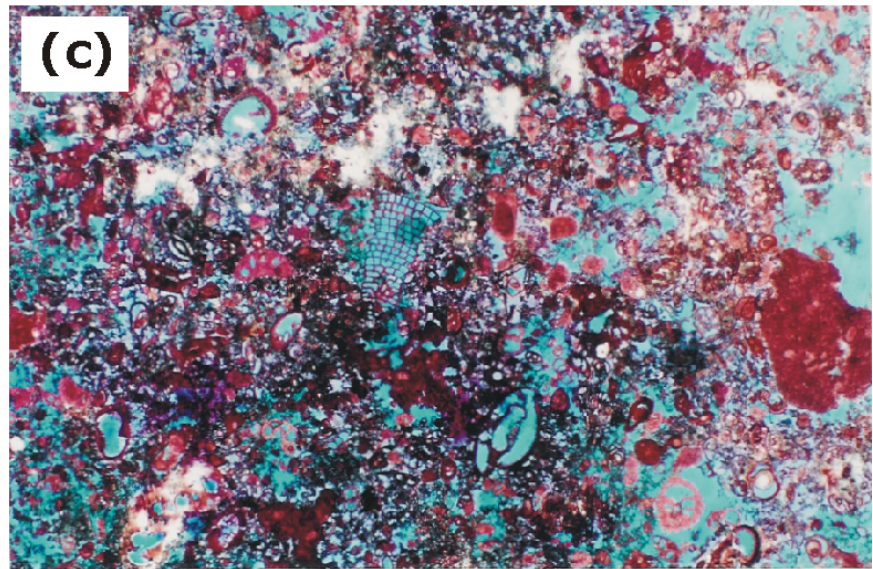
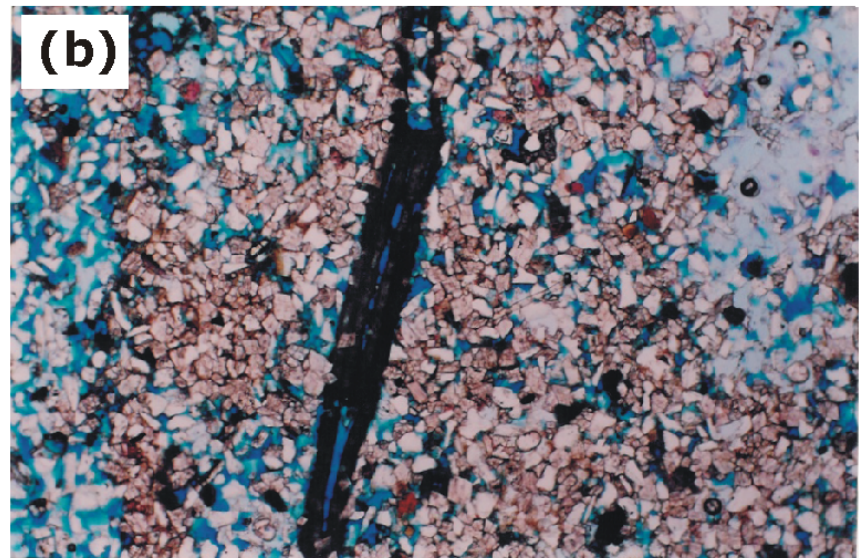
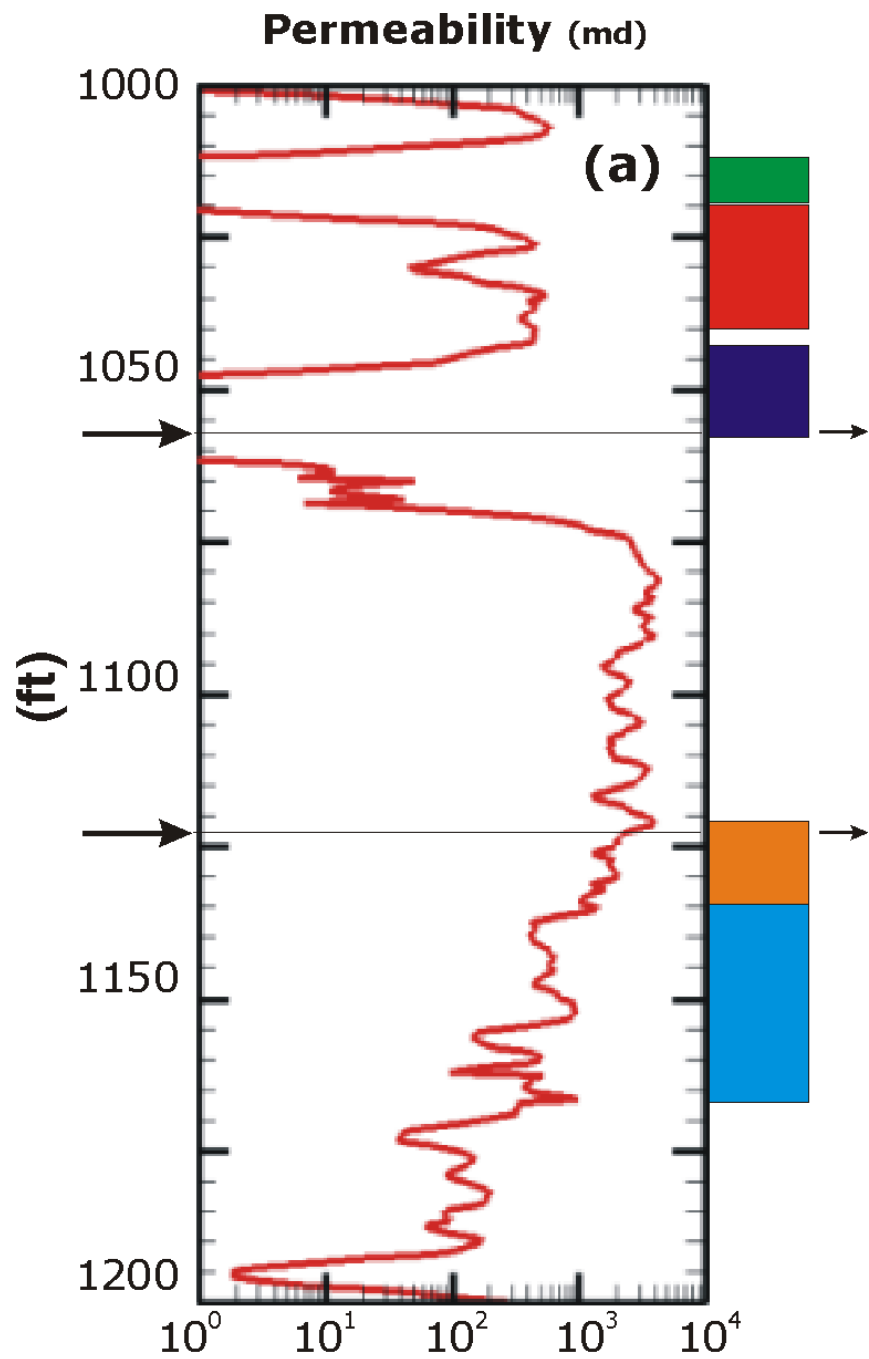







Figure 6

-  Facies #1: Low porosity, low permeability (isolated moldic porosity)
-  Facies #2: High porosity, high permeability (connected moldic porosity)
-  Facies #3: High porosity, low permeability (sandstone with small interparticle porosity)
-  Facies #4: Very high porosity, very high permeability (well connected, vuggy and interparticle porosity)
-  Facies #5: Very high porosity, very low permeability (isolated moldic, interparticle and interparticle porosity)



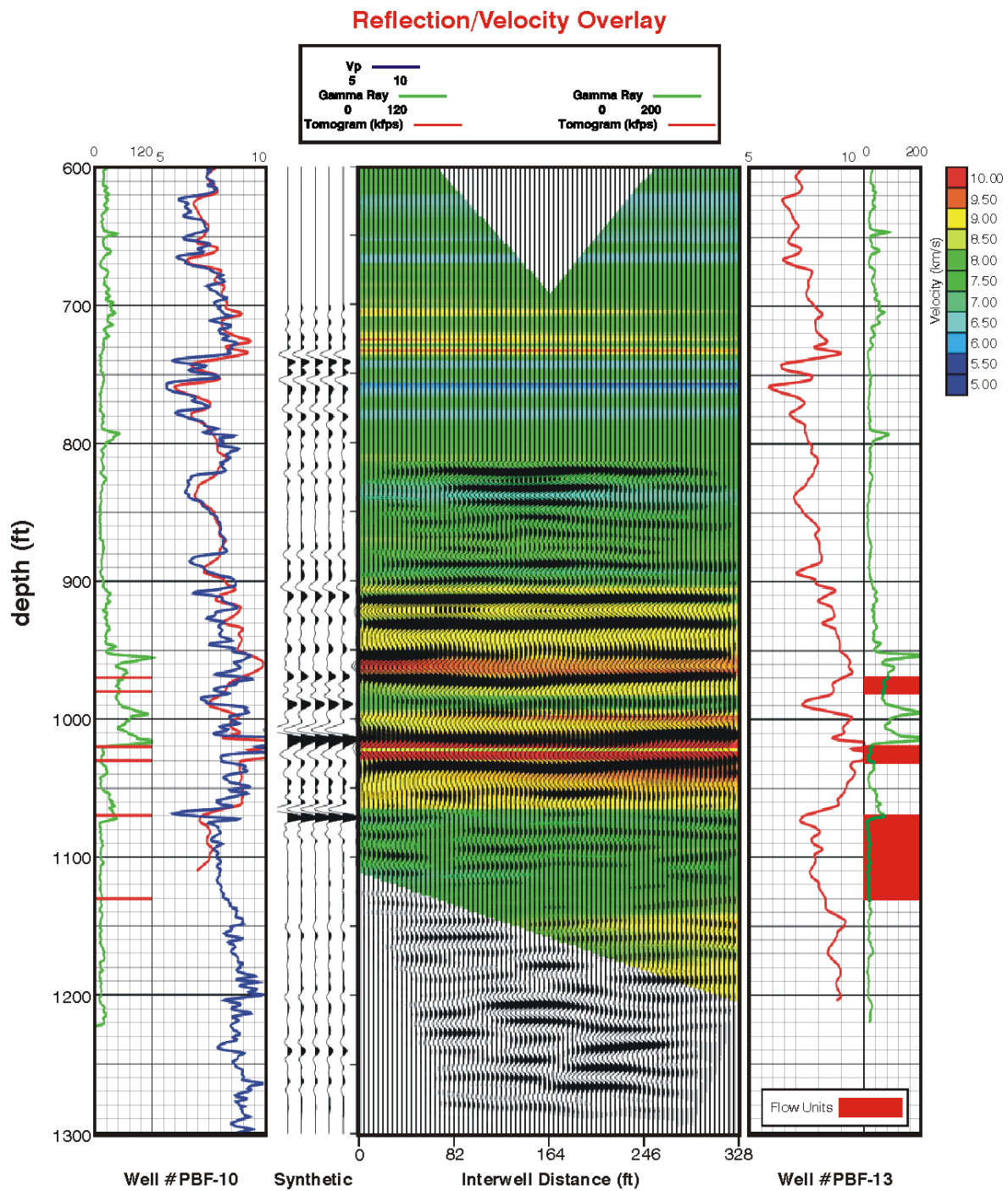


Figure 7

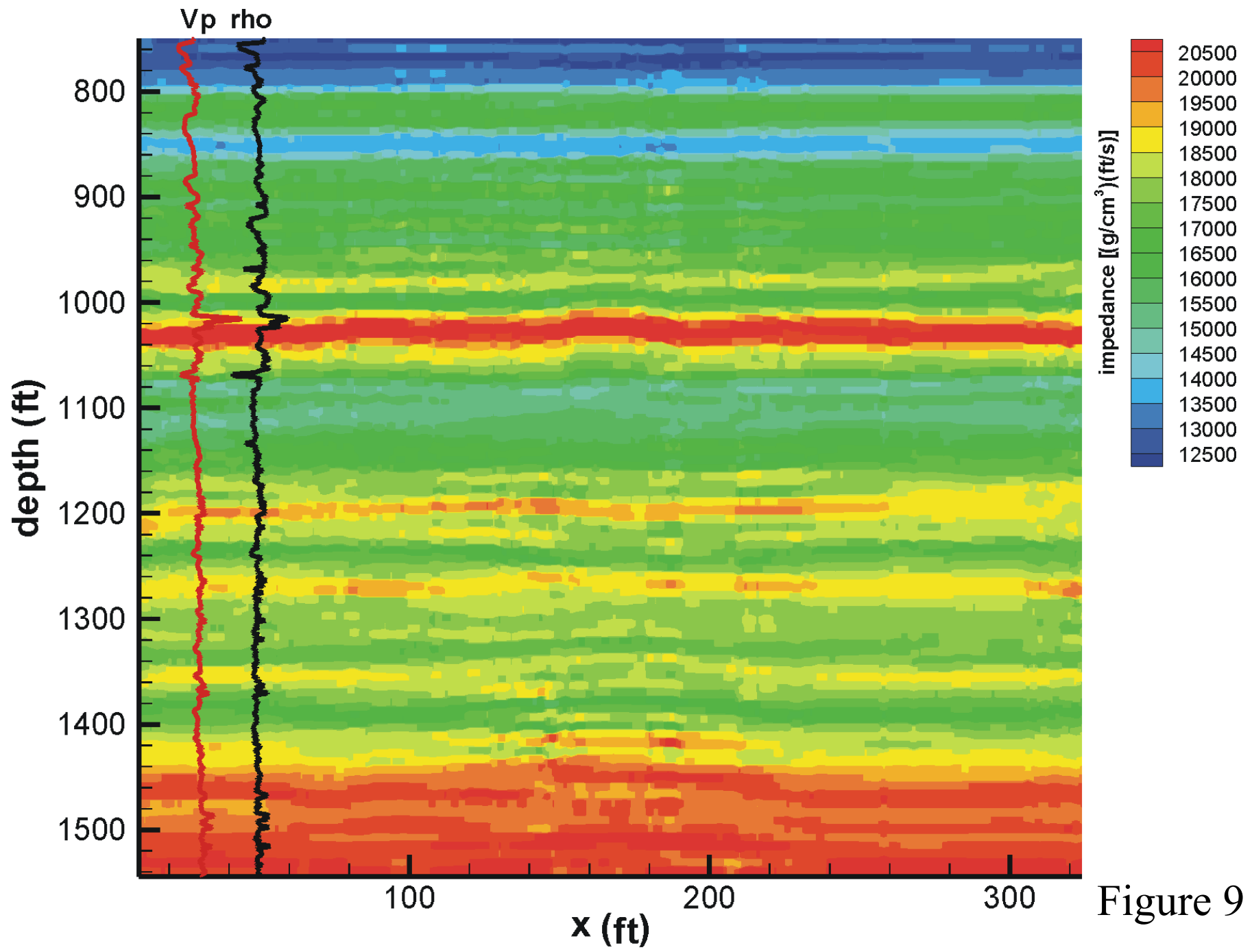


Figure 9

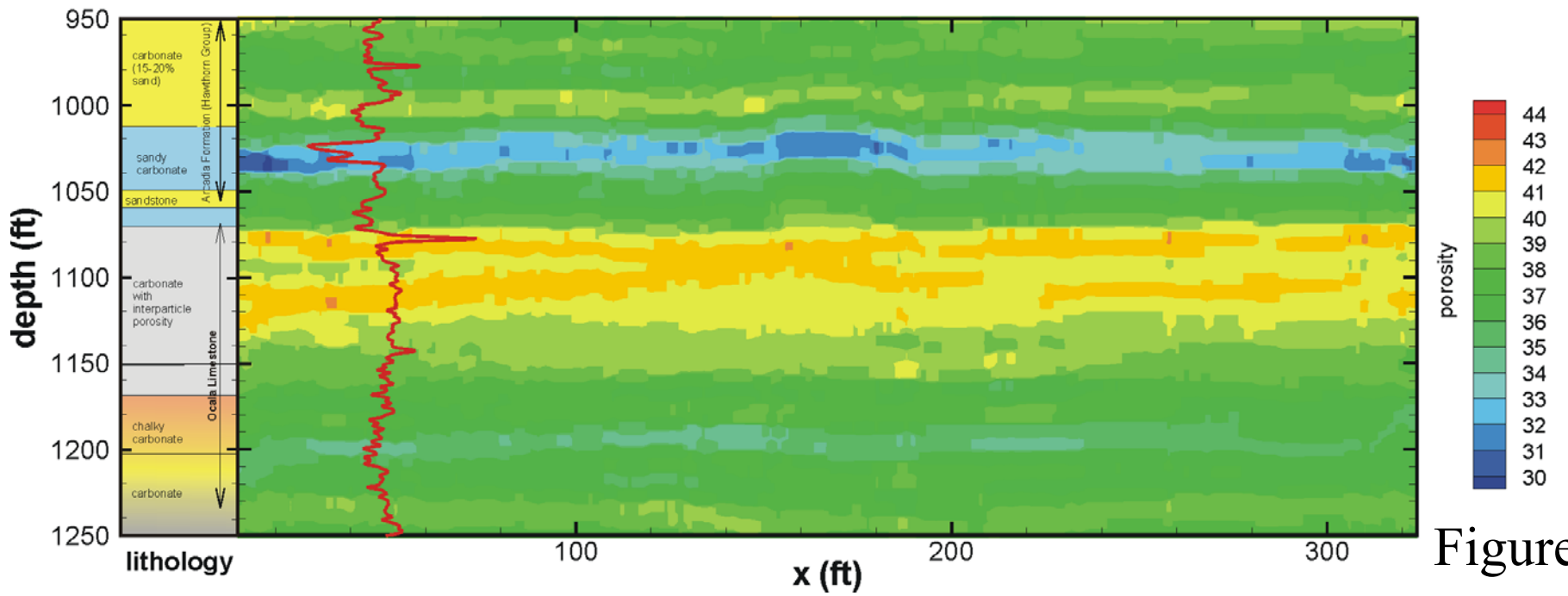
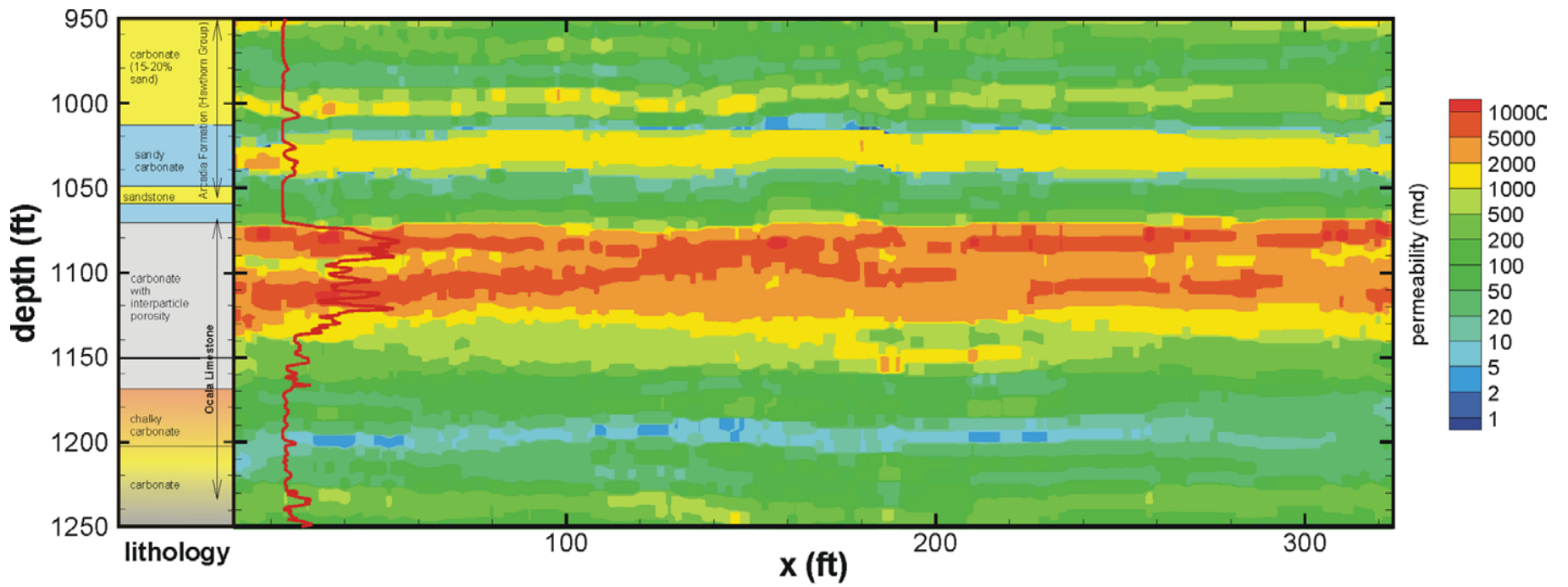


Figure 9