
Surveyor's Report

Report Date: 9/21/10

Submittal: Final

Prepared for: SCADA Telemetry Monitoring

South Florida Water Management District



South Florida Water Management District

SURVEY SECTION

3301 Gun Club Road West Palm Beach, Florida 33406

Phone; 561.686.8800 Fax: 561.682.0066

TABLE OF CONTENTS

Introduction	2
Purpose	3
Project Location	3
Datum	3
Leveling Methods	4
Horizontal Locations	4 - 5
Vertical Control	5 - 10
Project Results	10 - 16
Surveyor's Certificate	17

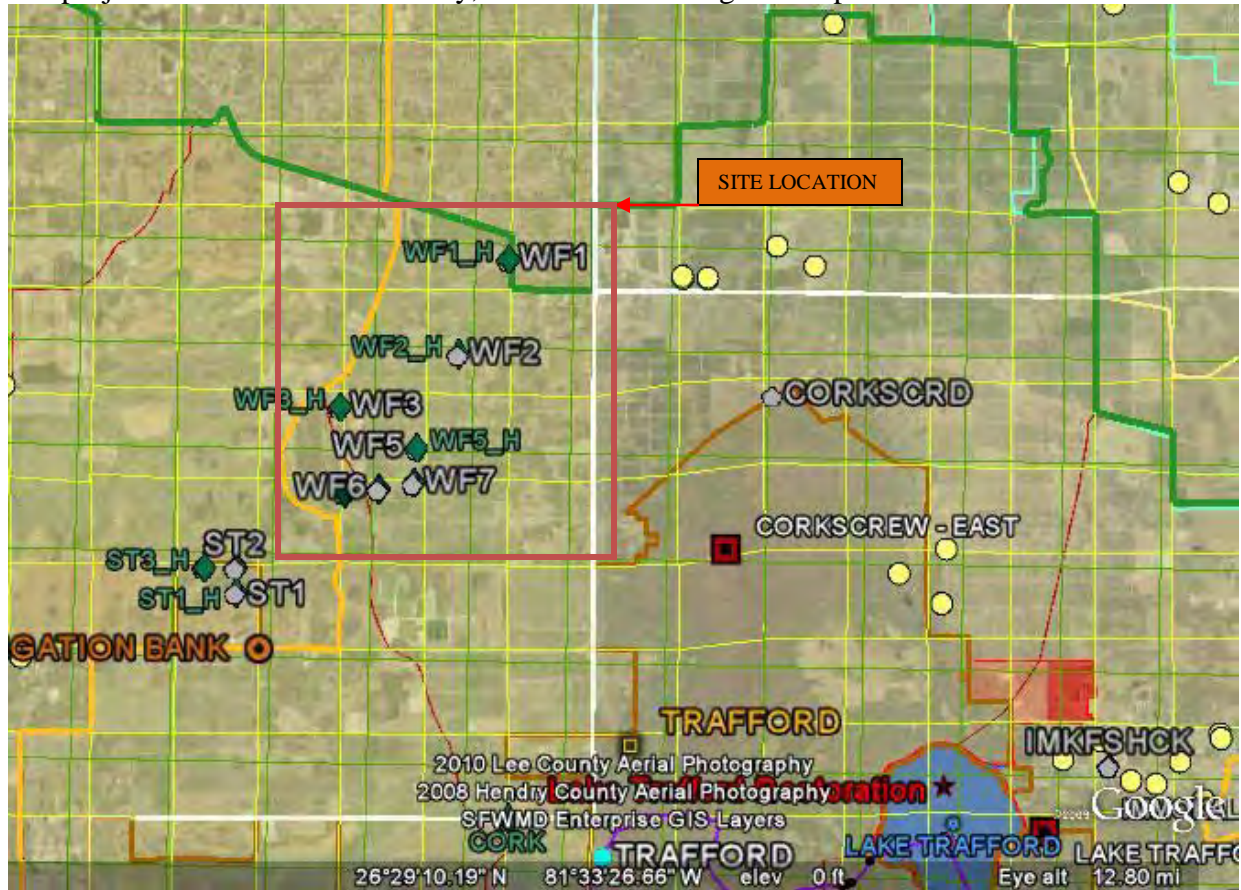
OVERVIEW OF THE PROJECT

PURPOSE

The purpose of this Survey is to establish Reference Elevations for monitoring wells by establishing NGS Third order elevations referring to both the North American Vertical Datum of 1988 (NAVD-88) and the National Geodetic Vertical Datum of 1929 (NGVD-29) at the site.

Location of Project

The project is located in Lee County, Florida. Following is a map of Location.



General Location (Not to Scale)

VERTICAL DATUM FOR THE PROJECT

The vertical datum for the project is the North American Vertical Datum of 1988. For correlation with older data sets, the elevations of the benchmarks are also shown in the National Geodetic Vertical Datum (NGVD) of 1929. The NGVD 29 elevations were derived using data from published NGS superseded values when applicable, otherwise values provided by the South Florida Water Management District in a file named “NGVD29.txt” were used. The linear unit for all elevations is the U.S. survey feet unless otherwise stated.

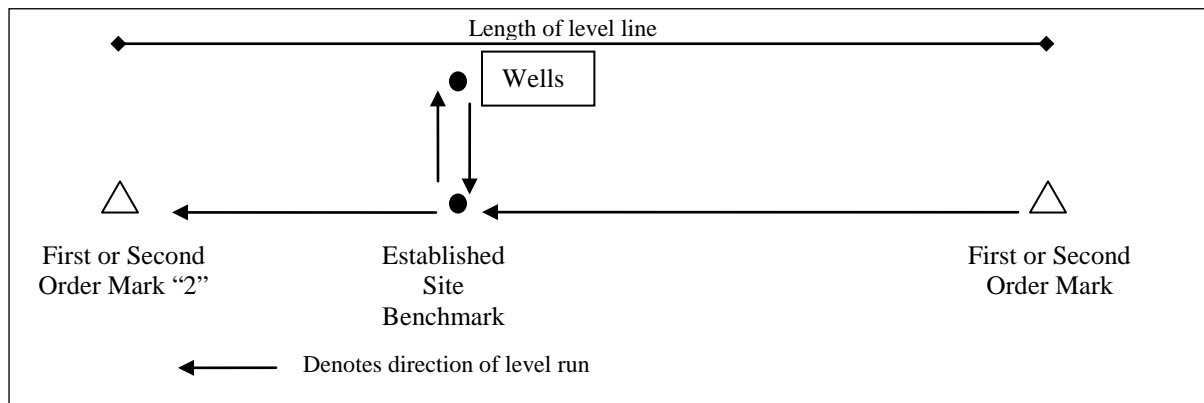
LEVELING METHODS

CONFIGURATION OF LEVEL RUNS

The leveling for the project was performed in accordance with the Federal Geodetic Control Subcommittee standard for Second-Order, Class II geodetic leveling. A brief description of the procedures used is as follows. The run was started at one of the First or Second Order marks and continued through the existing reference point established at the well and closed on the original First or Second Order vertical mark. (see Figure 1. below).

For each well site, a closed loop was run from an established Third Order vertical mark (Site Benchmark).

Figure 1 Typical Level Run Pattern



The FGCS maximum allowable misclosure for this type of run is 0.03' multiplied by the square root of the length of the line in miles.

EQUIPMENT USED

All leveling was performed with a Zeiss NI2 Level; Serial # 159720 and Philadelphia rod.

HORIZONTAL LOCATIONS

INTRODUCTION

The following instrument was used for the GPS observations:

- (1) Trimble GeoXT hand held unit




Description	X, (Easting) 83/99 Coordinates	Y, (Northing) 83/99 Coordinates	Latitude	Longitude
BM W244	390938.820	767259.044	26 26 32	81 48 32
BM P533	466722.955	796031.467	26 31 21	81 34 45.7
LC-4	455507.41	785414.08	26 29 32.7	81 36 46.2
LC-6	456007.12	779750.23	26 28 39.3	81 36 42.8
LC-7	458290.583	779934.191	26 28 41.2	81 36 17.7
LC-10	463230.55	788644.30	26 30 07.7	81 35 23.8
LEE-18	460637.74	782573.90	26 29 07.5	81 35 52.0

Description	X, (Easting) 83/99 Coordinates	Y, (Northing) 83/99 Coordinates	Latitude	Longitude
LEE-19	460636.64	780557.36	26 28 46.6	81 35 53.6
WF 2	463195.288	788554.604	26 30 06.8	81 35 24.16
WF 3	455730.227	785146.406	26 29 32.7	81 36 46.15
WF 4	456109.126	779807.195	26 28 39.84	81 36 41.7
WF 5	460633.160	782664.623	26 29 08.35	81 35 52.06
WF 6	458253.027	780063.613	26 28 42.48	81 36 18.12
WF 7	460480.264	780465.151	26 28 46.56	81 35 53.63




PROJECT RESULTS

The following tables list the elevations established for each existing or new mark, the level run misclosure, "to-reach" description for each mark and a photo of the mark. All elevations and coordinates are in US Survey Feet.

SURVEYOR'S REPORT VERTICAL CONTROL

BM W 244 (AD1343)	Elevation:	12.34 ft (NAVD 88)	13.54 ft (NGVD 29)
BM P 533 (AJ 7541)	Elevation:	29.86 ft (NAVD 88)	31.074 ft (NGVD 29)
Site BM	LC-10	30.686 ft (NAVD 88)	31.90 ft (NGVD 29)
Monitoring Well	WF 2 (STG)	34.48ft (NAVD 88)	35.69ft (NGVD 29)
Ground Water Well	WF 2 (GW)	31.93ft (NAVD 88)	33.14ft (NGVD 29)
Length of Run:	.01 mi	To Reach LC-10:	
Max Allowable Misclosure:	0.00 ft	TO REACH the Mark from SR29 and SR82 (south of Labelle)...go west on SR82 for 8.6mils to Farm gate entrance on south side of Rd. Continue thru gate easterly along a dirt Rd for 0.9ml to 90deg. Bend, continue south for 1.5ml to another bend, go west 0.5ml to another bend to the south....go west NW along dirt trail and ditch on west side 550ft to concrete pump pad and Mark...	
Actual Misclosure:	0.00 ft		
 			
<p>Mark recovered as described in SFWMD database in good condition.</p>			

SURVEYOR'S REPORT
VERTICAL CONTROL

BM W 244 (AD 1343)	Elevation:	12.34ft	(NAVD 88)	13.54ft	(NGVD 29)
BM P 533 (AJ 7541)	Elevation:	29.86ft	(NAVD 88)	31.074ft	(NGVD 29)
Site BM	LC-4	31.64ft	(NAVD 88)	32.85ft	(NGVD 29)
Monitoring Well	WF 3 (STG)	33.08ft	(NAVD 88)	34.29ft	(NGVD 29)
Ground Water Well	WF 3 (GW)	31.46ft	(NAVD 88)	32.67ft	(NGVD 29)
		To Reach LC-4 :			
		TO REACH the Mark from SR29 and SR82 (south of Labelle)...go west on SR82 for 8.6mils to Farm gate entrance on south side of Rd. Continue thru gate for 1.0ml to a "T" intersection. ...go right and meander for 1.7ml to office on left...continue 0.2ml to another "T" intersection ...go right for 0.4ml to Mark.			
 					
<p>Mark recovered as described in SFWMD database in good condition.</p>					

SURVEYOR'S REPORT
VERTICAL CONTROL

BM W 244 (AD 1343)	Elevation:	12.34 ft	(NAVD 88)	13.54 ft	(NGVD 29)
BM P 533 (AJ 7541)	Elevation:	29.86ft	(NAVD 88)	31.074ft	(NGVD 29)
Site BM	LC-6	32.01ft	(NAVD 88)	33.22ft	(NGVD 29)
Monitoring Well	WF 4 (STG)	32.67ft	(NAVD 88)	33.88ft	(NGVD 29)
Ground Water Well	WF 4 (GW)	31.13ft	(NAVD 88)	32.34ft	(NGVD 29)

To Reach **LC-6**:

TO REACH the Mark from SR29 and SR82 (south of Labelle)...go west on SR82 for 8.6mils to Farm gate entrance on south side of Rd. Continue thru gate for 1.0ml to a "T" intersection. ...go right and meander for 1.7ml to office on left...continue 0.2ml to another "T" intersection ...go right for 1.6ml to Mark.



Mark recovered as described in SFWMD database in good condition.



SURVEYOR'S REPORT
VERTICAL CONTROL

BM W 244 (AD 1343)	Elevation:	12.34 ft	(NAVD 88)	13.54 ft	(NGVD 29)
BM P 533 (AJ 7541)	Elevation:	29.86ft	(NAVD 88)	31.074ft	(NGVD 29)
Site BM	LEE- 18	28.58ft	(NAVD 88)	29.79ft	(NGVD 29)
Monitoring Well	WF 5 (STG)	33.71ft	(NAVD 88)	34.92ft	(NGVD 29)
Ground Water Well	WF 5 (GW)	32.44ft	(NAVD 88)	33.65ft	(NGVD 29)

To Reach **LEE- 18**:

TO REACH the Mark from SR29 and SR82 (south of Labelle)...go west on SR82 for 8.6mIs to Farm gate entrance on south side of Rd. Continue thru gate easterly along a dirt Rd for 0.9ml to a 90deg. Bend...go south 1.5ml to another 90deg. Bend..continue 0.2ml to another 90deg. Bend...go west 0.6ml to a "T" intersection ...go south meandering 1.0ml to a double ditch with a berm in the middle running east/west ... go to the south side of the south ditch... go east along the south side of the ditch for 0.25ml and Mark.



Mark recovered as described in SFWMD database in good condition.



SURVEYOR'S REPORT
VERTICAL CONTROL

BM W 244 (AD 1343)	Elevation:	12.34ft	(NAVD 88)	13.54 ft	(NGVD 29)
BM P 533 (AJ 7541)	Elevation:	29.86ft	(NAVD 88)	31.074ft	(NGVD 29)
Site BM	LC- 7	28.81ft	(NAVD 88)	30.02ft	(NGVD 29)
Monitoring Well	WF 6 (STG)	31.985ft	(NAVD 88)	33.195ft	(NGVD 29)
Ground Water Well	WF 6 (GW)	30.205ft	(NAVD 88)	31.415ft	(NGVD 29)

To Reach **LC-7**:

TO REACH the Mark from SR29 and SR82 (south of Labelle)...go west on SR82 for 8.6mIs to Farm gate entrance on south side of Rd. Continue thru gate for 1.0ml to a "T" intersection. ...go right and meander for 1.7ml to office on left...continue 0.2ml to another "T" intersection ...go right and meander 1.7ml...go left at a dirt Rd with culvert and meander 0.8ml to a "T" intersection .. Right is main Rd left is grove Rd. take grove Rd to Mark.



Mark recovered as described in SFWMD database in good condition.



SURVEYOR'S REPORT
VERTICAL CONTROL

BM W 244 (AD 1343)	Elevation:	12.54 ft	(NAVD 88)	13.54 ft	(NGVD 29)
BM P 533 (AJ 7541)	Elevation:	29.86ft	(NAVD 88)	31.074ft	(NGVD 29)
Site BM	LEE- 19	28.23ft	(NAVD 88)	29.44ft	(NGVD 29)
Monitoring Well	WF 7 (STG)	33.22ft	(NAVD 88)	34.43ft	(NGVD 29)
Ground Water Well	WF 7 (GW 1)	30.55ft	(NAVD 88)	31.76ft	(NGVD 29)
Ground Water Well	WF 10 (GW 2)	30.89ft	(NAVD 88)	32.10ft	(NGVD 29)

To Reach **LEE - 19**:

TO REACH the Mark from SR29 and SR82 (south of Labelle)...go west on SR82 for 8.6mls to Farm gate entrance on south side of Rd. Continue thru gate easterly along a dirt Rd for 0.9ml to a 90deg. Bend...go south 1.5ml to another 90deg. Bend..continue 0.2ml to another 90deg. Bend...go west 0.6ml to a "T" intersection ...go south meandering 1.2ml to a "T"...go west 0.1ml to a 90deg bend....go south 0.2ml to a double ditch with a berm in the middle...go east 0.45ml along the north side of the north ditch to the earthen bridge going southerly and the Mark.

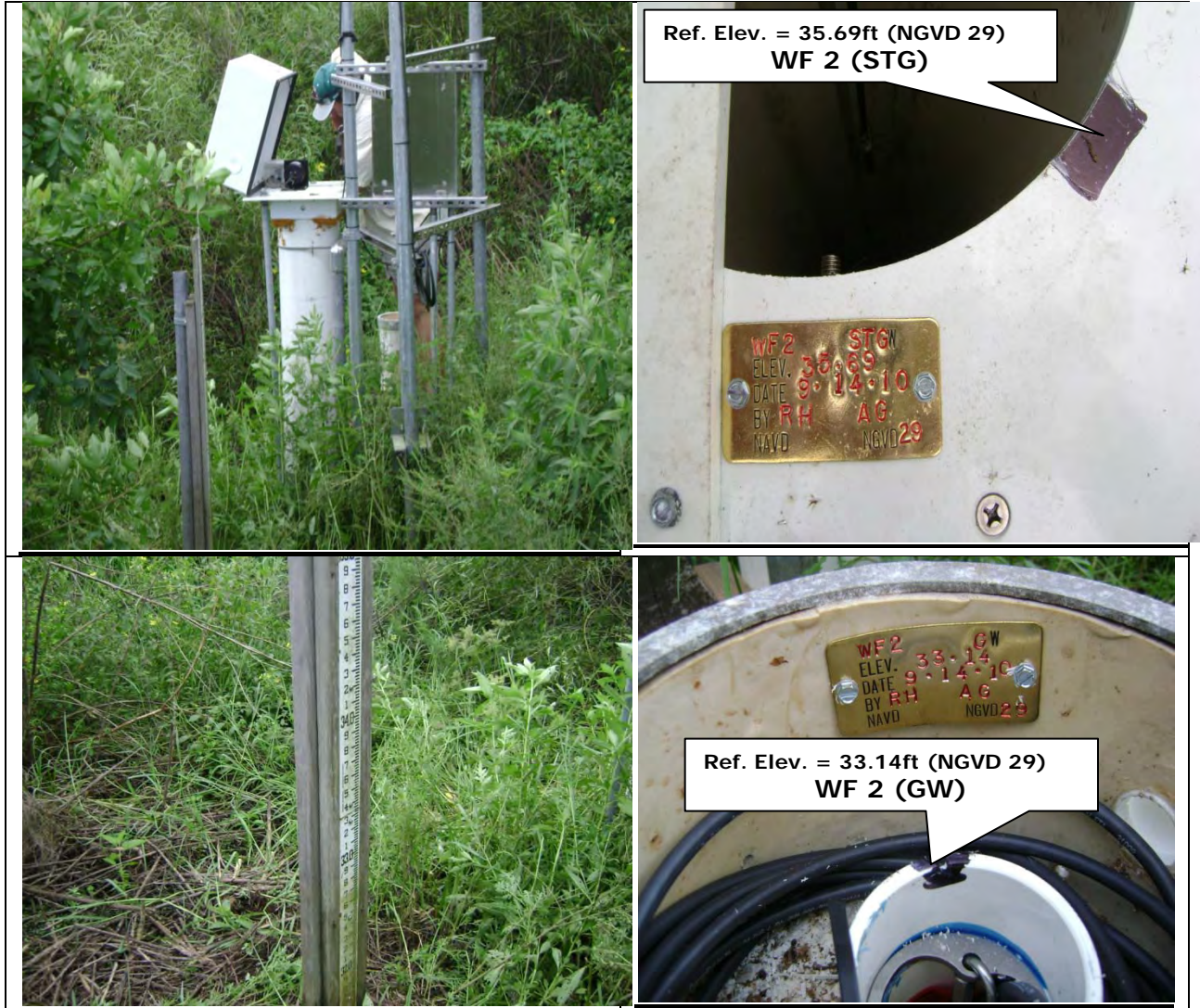


Mark recovered as described in SFWMD database in good condition.



SURVEYOR'S REPORT
PROJECT RESULTS

WF 2 (STG) and (GW) Wells



Elevation are shown in NGVD 29 datum unless noted otherwise

Party Chief. Hudson Field Book: Misc. FB# 007 Pg# 56

Bench Mark: "LC-10" Elev. = 30.686 ft (NAVD 88)

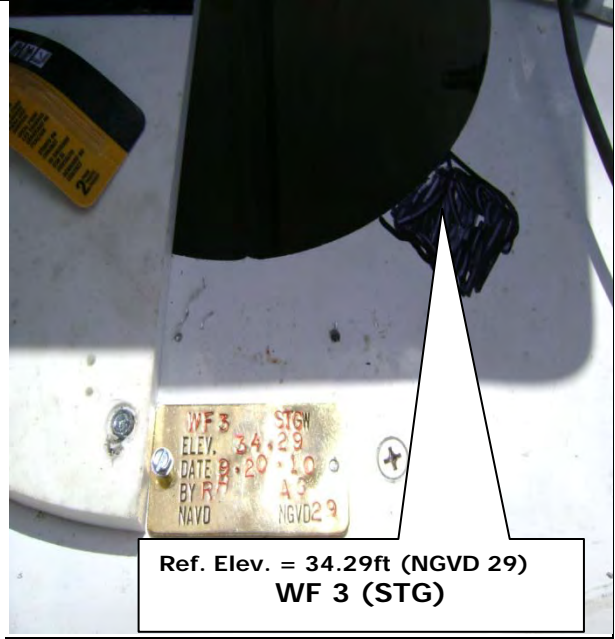
Elev. = 31.90 ft (NGVD 29)

Date of Survey: September 14, 2010.

Offset: = 1.213ft add this value to NAVD 88 to obtain NGVD 29 values

SURVEYOR'S REPORT
PROJECT RESULTS

WF 3 (STG) and (GW) Wells



Elevation are shown in NGVD 29 datum unless noted otherwise

Party Chief. Hudson Field Book: Misc. FB# 007 Pg# 57

Bench Mark: "LC-4" Elev. = 31.64 ft (NAVD 88)

Elev. = 32.85 ft (NGVD 29)

Date of Survey: September 20, 2010.

Offset: = 1.21ft add this value to NAVD 88 to obtain NGVD 29 value

SURVEYOR'S REPORT
PROJECT RESULTS

WF 4 (STG) and (GW) Wells



Elevation are shown in NGVD 29 datum unless noted otherwise

Party Chief. Hudson Field Book: Misc. FB# 007 Pg# 57

Bench Mark: "LC-6" Elev. = 32.01 ft (NAVD 88)

Elev. = 33.22 ft (NGVD 29)

Date of Survey: July 20, 2010.

Offset: = 1.21ft add this value to NAVD 88 to obtain NGVD 29 value

SURVEYOR'S REPORT
PROJECT RESULTS

WF 5 (STG) and (GW) Wells



Elevation are shown in NGVD 29 datum unless noted otherwise

Party Chief R. Hudson, Field Book: Misc. FB# 007 Pg#49

Bench Mark: "LEE-18" Elev. = 28.58 ft (NAVD 88)

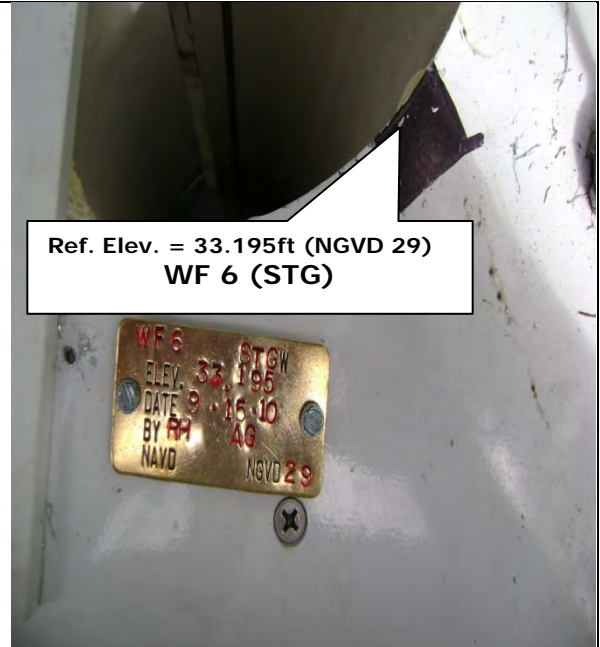
Elev. = 29.79ft (NGVD 29)

Date of Survey: July 15, 2010.

Offset: = 1.21ft add this value to NAVD 88 to obtain NGVD 29 value

SURVEYOR'S REPORT
PROJECT RESULTS

WF 6 (STG) and (GW) Wells



Elevation are shown in NGVD 29 datum unless noted otherwise

Party Chief R. Hudson, Field Book: Misc. FB# 007 Pg# 56

Bench Mark: "LC-7" Elev. = 28.81 ft (NAVD 88)

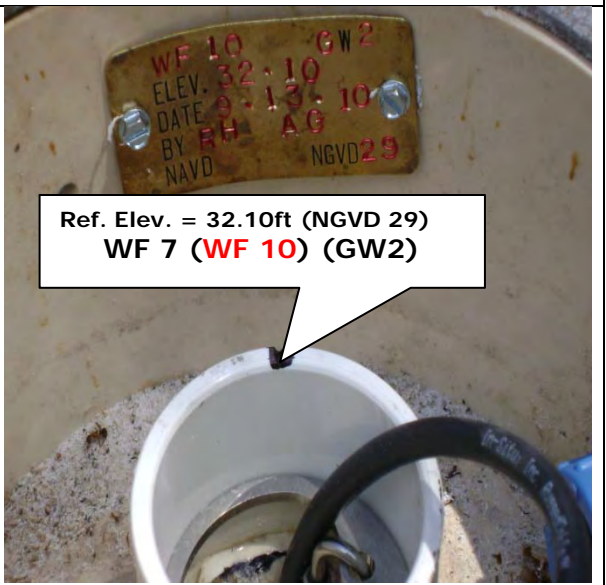
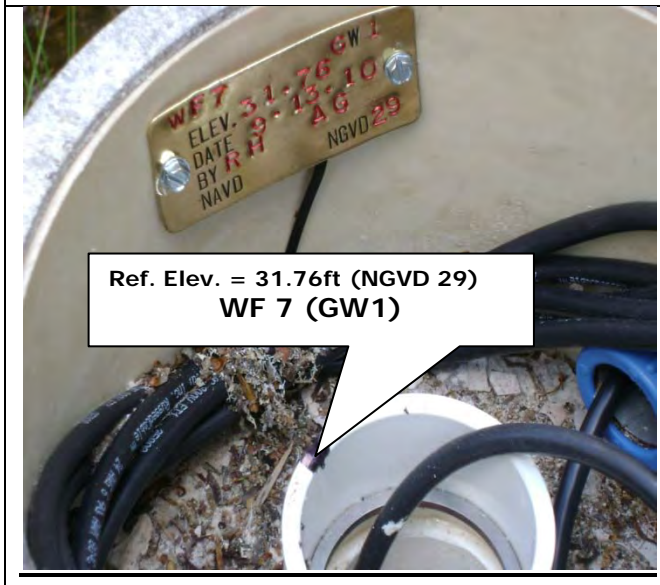
Elev. = 30.02ft (NGVD 29)

Date of Survey: September 15, 2010.

Offset: = 1.21ft add this value to NAVD 88 to obtain NGVD 29 value

SURVEYOR'S REPORT
PROJECT RESULTS

WF 7 (STG) and (GW) Wells



Elevation are shown in NGVD 29 datum unless noted otherwise

Party Chief R. Hudson, Field Book: Misc. FB# 007 Pg# 55

Bench Mark: "LEE-19" Elev. = 28.23 ft (NAVD 88)

Elev. = 29.44ft (NGVD 29)

Date of Survey: September 8, 2010.

Offset: = 1.21ft add this value to NAVD 88 to obtain NGVD 29 value.

Abbreviation:

- NAVD 88 – North American Vertical Datum of 1988**
- NGVD 29 – National Geodetic Vertical Datum of 1929**
- NAD 83/99- (Horizontal Datum) North American Datum**
- NGS – National Geodetic Survey.**
- SFWMD – South Florida Water Management District**
- PSM – Professional Surveyor & Mapper**

SURVEYOR’S CERTIFICATION

I hereby certify that this Specific Purpose Survey was made under my responsible charge and meets applicable portions of the Minimum Technical Standards set forth by the Florida Board of Professional Surveyors and Mappers in Chapter 5J-17.050 thru 5J-17.052, Florida Administrative Code, pursuant to Section 472.027, Florida State Statutes. This report is prepared for the sole and specific use of the South Florida Water Management District and is not assignable.

Date of Survey
7/15 - 9/15, 2010

Elvie D. Ebanks PSM
Professional Surveyor and Mapper
State of Florida
Certificate No. 5765

SEC 10 TWP 40S RAE 27E

ESTABLISH REFERENCE ELEVATIONS FOR
WF 5 WELL IN LEE COUNTY

REF. BM DESC. SHEET

[WF # 5]

STA	+	HI	-	ELEV	Bm
	6.98 0.28	34.77			29.79 (NOID 29)
STG. WELL			1.85 5.41	34.92	
GRND WELL			3.12 4.14	33.65	
BOLT			4.61 2.65	32.14	

RETURN LEVELS

	4.52 2.74	36.68			
Bm			6.39 0.37	29.79	29.79

END WF # 5
CONTD P. 50

W. Hudson
G. GIAMMARLO

COMMENTS

Bm "LEE 18" AS PER DESC.

"X" MARK ON NEW ALUMINUM RECORDER
PLATFORM ON SOUTH TOP OF 12" PVC WELL.

NOTCH CUT IN NORTH TOP OF A 2" PVC COUPLING
FIXED TO A 2" PVC WELL, ENCASED IN A
3" PVC PIPE.

TOP OF LAG BOLT IN WOOD STAFF GAGE
GAGE READS 32.16' @ TOP OF BOLT HEAD

Bm ABOVE ELEV 0.00'

COORD FE P. 49
WF # 4

STA + HD - ELEV Bm
33.22

4.93
2.33 38.15

GR 5.92 32.33 32.335
1.44 (ADS)

STG 4.27 33.88 33.885
2.99 (ADS)

BOLT 3.00 30.15 30.155
5.26 (ADS)

RETURN LEVELS

5.15
1.10 38.30

Bm 5.09 33.21 33.22
2.17

END WF #

W. Hodson
J. Grambling
P. Riviere

Comments
Bm "LCL" as per Desc.

SEL 15 TWP 46 Range 27

North Lot in NW Top of a 2" PVC COOLING FIXES
TO A 2" PVC WELL, ENCASED IN A 8" PVC VERT. PIPE.

"X" MARK on NEED ANCHOR PLATE FIXED TO A 12"
PVC STAGING WELL.

Top of Bolt in Wood STAFF CASE

30.10

Bm ABOVE ERROR 0.01'

WF # 7

STA	+	HE	-	ELEV	Bm
Bm	6.79 0.47	36.23			29.44 (NWD 29)
WF 7			4.47 2.79	31.76	
RECORDER			1.80 5.46	34.43	
WF 10			4.13 3.13	32.10	
W.S.			6.55 0.71	29.68	
~~~~~ RETURN LEVELS ~~~~~					
WF 7	4.56 2.78	36.32		31.76	
Bm			6.88 0.88	29.44	29.44
END WF 7					

R W HUDSON  
& GIAMMARLO

COMMENTS

Bm "LEE 19" PER DESC.

"WF 7"

NOTCH CUT IN NW TOP OF 2" PVC PIPE ENCASED IN 8" PVC WELL.

MARK ON NEW ALUMINUM RECORDER PLATFORM

"WF 10"

NOTCH CUT IN NW TOP OF 2" PVC PIPE ENCASED IN 8" PVC WELL

WATER SURFACE ELEV.  
STAFF GAGE = 29.66'

WF 7 ABOVE

Bm "LEE 19"



Cont'd F2 B. SS

WF # 2

STA	+	HI	-	ELEV	Bm
Bm					31.90

6.79	38.69
0.47	

S.G.		4.61	34.08
		2.65	

SLG		3.00	35.69
		4.26	

SW		5.55	33.14
		1.71	

~~~~~ RETURN LEVELS ~~~~~

| | |
|------|-------|
| 5.48 | 38.62 |
| 1.78 | |

| | | | | |
|----|--|------|-------|-------|
| Bm | | 6.72 | 31.90 | 31.90 |
| | | 0.54 | | |

Tim Hudson
of Gramma

Comments

"Bm LC-10" is PHONE FROM E. EBANKS

LAG BOLT IN STEEL GLOBE BEARS 34.24'

"I" MARK ON NEW ANCHOR PLATE

NOTCH CUT IN EW TOP 2" PVC WELL IN 8" PVC CASTING

Bm ABOVE.

WF # 6

| STA | + | HI | - | ELEV | Bm |
|---------------------------|--------------|------------|--------------|-------|--------------------|
| Bm | | | | | 30.02
[NGVD 29] |
| | 6.68
0.58 | 36.70 | | | |
| SG | | | 6.58
0.68 | 30.12 | 30.125
(ADJ) |
| STG | | | 3.51
3.75 | 33.19 | 33.195
(ADJ) |
| G.W. | | | 5.29
1.97 | 31.41 | 31.415
(ADJ) |
| ~~~~~ RETURN LEVELS ~~~~~ | | | | | |
| | 5.14
2.12 | 36.55 | | | |
| Bm | | | 6.54
0.72 | 30.01 | 30.02 |
| | | <u>END</u> | <u>WF 6</u> | | |

MIT HUDSON
GIANMARCO

| | COMMENTS |
|----------|--|
| Bm LG-7 | PER DESG. |
| | TOP OF LAB BOLT IN WOODEN STAFF GAGE.
GAGE READS: 30.14' @ TOP OF BOLT. |
| | 1" MARK ON NEW ALUM. RECORDER PLATFORM |
| | NOTCH IN NEW TOP OF 2" PVC WELL INSIDE
A 3" PVC CASTING |
| Bm ABOVE | (ERROR - 0.01') |

Cont'd Fe R. SL

WF # 3

| STA | + | HI | - | Bm | ELEV |
|-----|--------------|-------|---|----|--------------------|
| Bm | | | | | 32.85
[WOOD 25] |
| | 1.79
5.47 | | | | |
| | | 34.64 | | | |

| | | | | | |
|----|--|--|--------------|-------|--|
| SG | | | 3.58
3.68 | 31.06 | |
|----|--|--|--------------|-------|--|

| | | | | | |
|----|--|--|--------------|-------|--|
| SG | | | 0.35
6.91 | 34.29 | |
|----|--|--|--------------|-------|--|

| | | | | | |
|-----|--|--|--------------|-------|--|
| B.W | | | 1.97
5.29 | 32.67 | |
|-----|--|--|--------------|-------|--|

~~~~~ RETURN LEVELS ~~~~~

|  |              |  |  |  |       |
|--|--------------|--|--|--|-------|
|  | 1.92<br>5.34 |  |  |  | 34.59 |
|--|--------------|--|--|--|-------|

|    |  |  |              |       |       |
|----|--|--|--------------|-------|-------|
| Bm |  |  | 1.74<br>5.52 | 32.85 | 32.85 |
|----|--|--|--------------|-------|-------|

~~~~~ END WILDCAT FARMS ~~~~~

T.H. HUDSON
P. GRAMMADO

COMMENTS

ELEV VIA PHOTO COLL FROM OFFICE (AR)

TOP OF LAG BOLT IN WOOD STAFF GAGE.
GAGE READS 31.09 & BOLT.

"I" MARK ON NEW ALUMINUM RECORDER PLATFORM

NOTCH IN ELEV TOP OF 2" PVC WELL; ENCLOSED IN
A 3" PVC PIPE.

Bm ABOVE ERROR 0.00



FLA. WATER MANAGEMENT SURVEY
B.M.
LC 10
MARKER 1910
OS 19 98

WF2
ELEV. 33.14 GW
DATE BY RH 9.14.10 AG
NAVD NGVD 29



WF2 STGW
ELEV. 35.69
DATE 9.14.10
BY RH AG
NAVD NGVD 29

7
6
5
4
3
2
1
34.0
9
8
7







2

WF 3 STGN
ELEV. 34.29
DATE 9.20.10
BY RH AG
NAVD NGVD29



WF3 9W
ELEV. 32.67
DATE 9/20/10
BY R.H. AG
NAVD NBVD 29



WF3

ELEV.

DATE

BY RH

NAVD

9.20

32.67

10

AG

NGVD 29

GW

3

2

1

31.0

9

8

7









2
1
31.0
9
8
7
6
5
4
3
2
1
20.0

WORLD SURVEYING & MAPPING EQUIPMENT CO. INC. BALTIMORE, MARYLAND

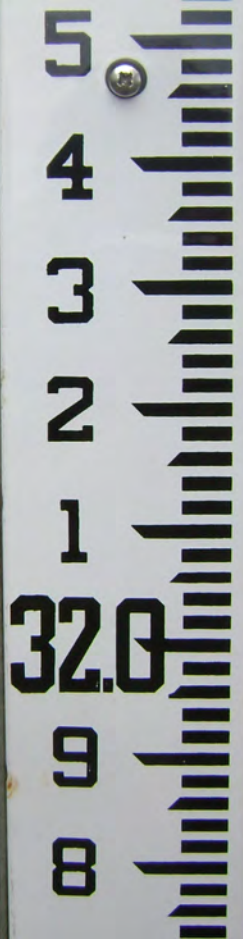
WF 4 STGW
ELEV. 3.388
DATE 7.20.10
BY R H A G CR
NAVD NGVD 29

WF4 GW
ELEV. 32.34
DATE 7.20.10
BY RH AG CR
NAVD NGVD 29

Im-Hitec Inc.

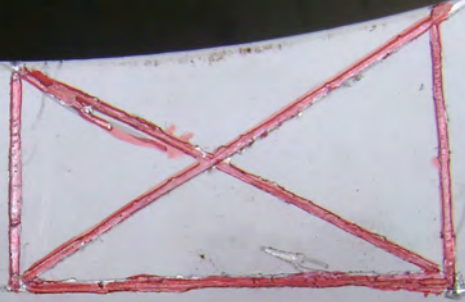


5
4
3
2
1
32.0
9
8



WF 5 GW
ELEV. 33.65
DATE 7.15.10
BY RH AG
NAVD NGVD 29





WF 5 STGW

ELEV. 34.92

DATE 7.15.10

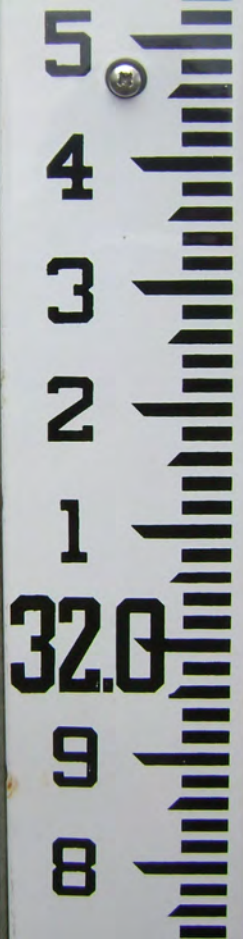
BY RH AG

NAVD

NGVD 29

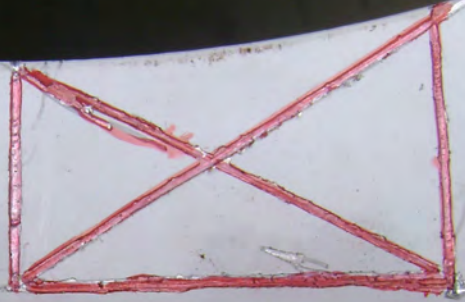


5
4
3
2
1
32.0
9
8



WF 5 GW
ELEV. 33.65
DATE 7.15.10
BY RH AG
NAVD NGVD 29





WF 5 STGW

ELEV. 34.92

DATE 7.15.10

BY RH AG

NAVD

NGVD 29









SFWMD

ALL INFORMATION CONTAINED HEREIN IS UNCLASSIFIED

DATE 11/20/04 BY 60322







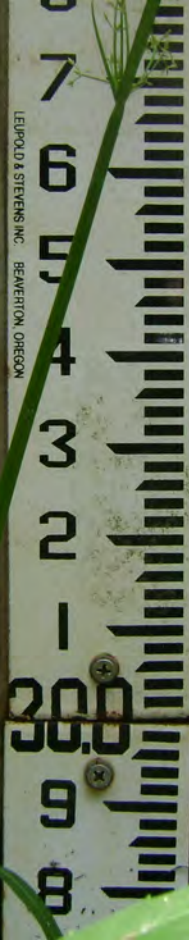
WFS 31.415 GW
ELEV. 31.415
DATE 9.15.10
BY RH AG
NAVD NGVD 29



WF 6 STGW
ELEV. 33.195
DATE 9.15.10
BY RH AG
NAVD NGVD 29



LEUPOLD & STEVENS INC. BEAVERTON, OREGON



WF 7 STGW

ELEV. 34.43

DATE 9.13.10

BY RH AG

NAVD

NGVD 29

WARNING
DANGER
CAUTION
DO NOT TOUCH
ELECTRICAL PARTS
OR THE SURFACE OF THE
UNIT WHILE IT IS
POWERED ON OR
BEING CHARGED.
IF YOU NOTICE
SMOKE OR A BURNING
ODOR, STOP USING
THE UNIT IMMEDIATELY
AND CONTACT YOUR
DEALER OR SERVICE
CENTER.
DO NOT USE THE UNIT
IF THE POWER SUPPLY
CABLE IS DAMAGED OR
IF THE POWER SUPPLY
CABLE IS NOT PLUGGED
CORRECTLY INTO THE
POWER SUPPLY SOCKET.
DO NOT USE THE UNIT
IF THE POWER SUPPLY
CABLE IS PLUGGED INTO
A SOCKET WITH A
DIFFERENT VOLTAGE
OR FREQUENCY.
DO NOT USE THE UNIT
IF THE POWER SUPPLY
CABLE IS PLUGGED INTO
A SOCKET WITH A
DIFFERENT GROUNDING
TYPE.
DO NOT USE THE UNIT
IF THE POWER SUPPLY
CABLE IS PLUGGED INTO
A SOCKET WITH A
DIFFERENT GROUNDING
TYPE.
DO NOT USE THE UNIT
IF THE POWER SUPPLY
CABLE IS PLUGGED INTO
A SOCKET WITH A
DIFFERENT GROUNDING
TYPE.

WF 7
ELEV. 34.43 W
DATE 9.13.10
BY RH AG
NAVD
NGVD 29



SOUTH FLORIDA WATER MANAGEMENT
DISTRICT

WF 7

FOR INFO GIVE NUMBER AND WRITE
P.O. BOX 24680 WPB FL 33416-4680

WF7 31-76 GW 1
ELEV. 9-13-10
BY R H A G
NAVD NGVD 29





דוד

89

דוד

89

דוד

דוד

דוד



WF #7
GRW 1

WF #10
GRW 2



WF 10 GW 2
ELEV. 32.10
DATE 9.13.10
BY RH AG
NAVD NGVD 29



SOUTH FLORIDA WATER MANAGEMENT
DISTRICT

WF 10

FOR INFO GIVE NUMBER AND WRITE:
P.O. BOX 24680 WPB FL 33416-4680

USA 00



WF #7
GRW 1

WF #10
GRW 2