

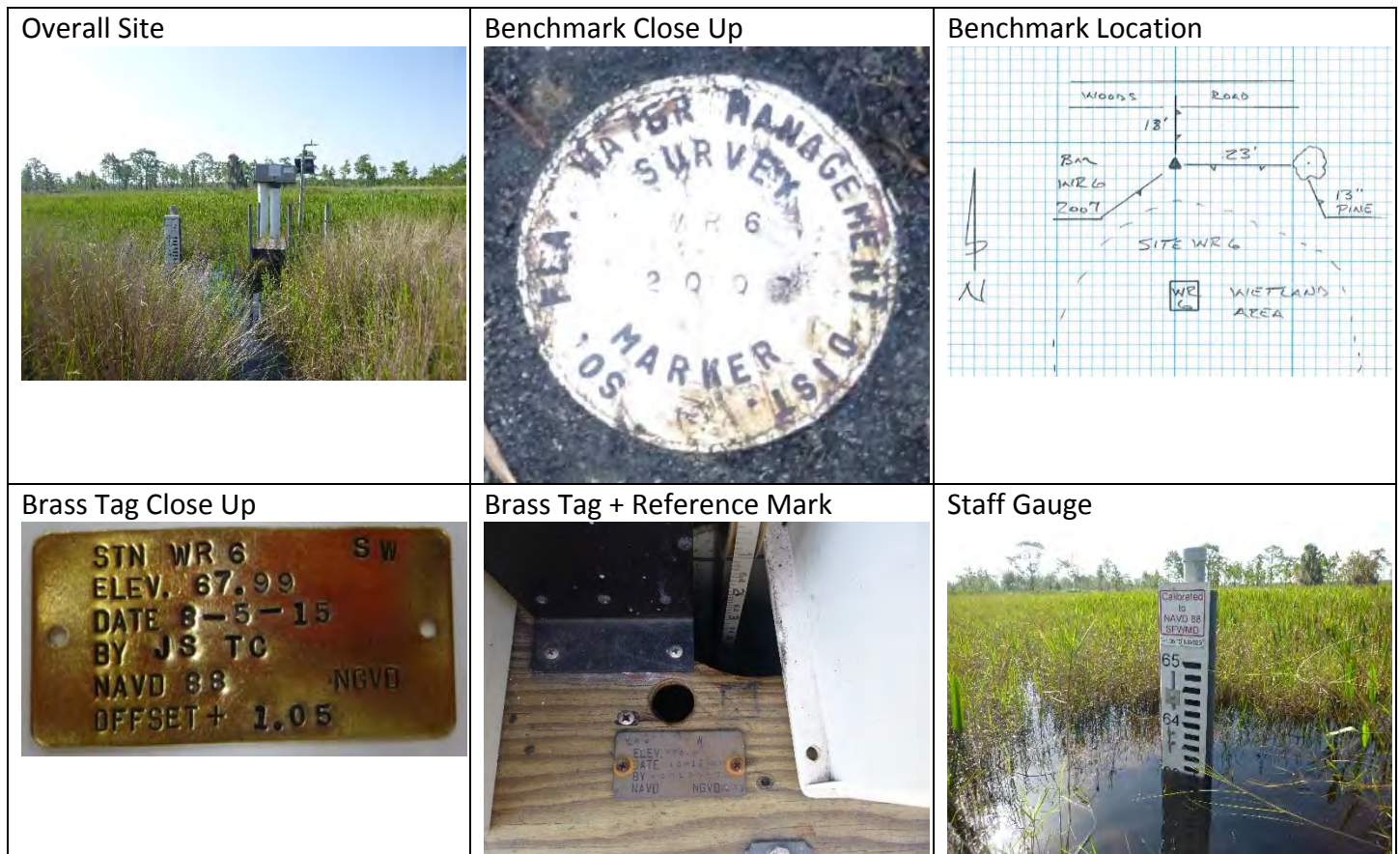
Site Name WR6 GW1		Date of Field Work August 5, 2015
Party Chief Strickland/Clanton	Field Book Name/Number MISC FB # 6X	Page Number 36
Site Benchmark Name WR6 2007	Benchmark Elevation (NAVD88) 63.78 ft	Datum Offset to NGVD29 + 1.05
Reference Elevation (NAVD 88) 68.26 ft		Existing Tag Elevation (Datum) 69.31 ft (NGVD 29)
Notes: Ground elevation = 61.44 ft (NAVD 88). Corpscon v6.0.1 offset = +1.05, Field offset = +1.05		

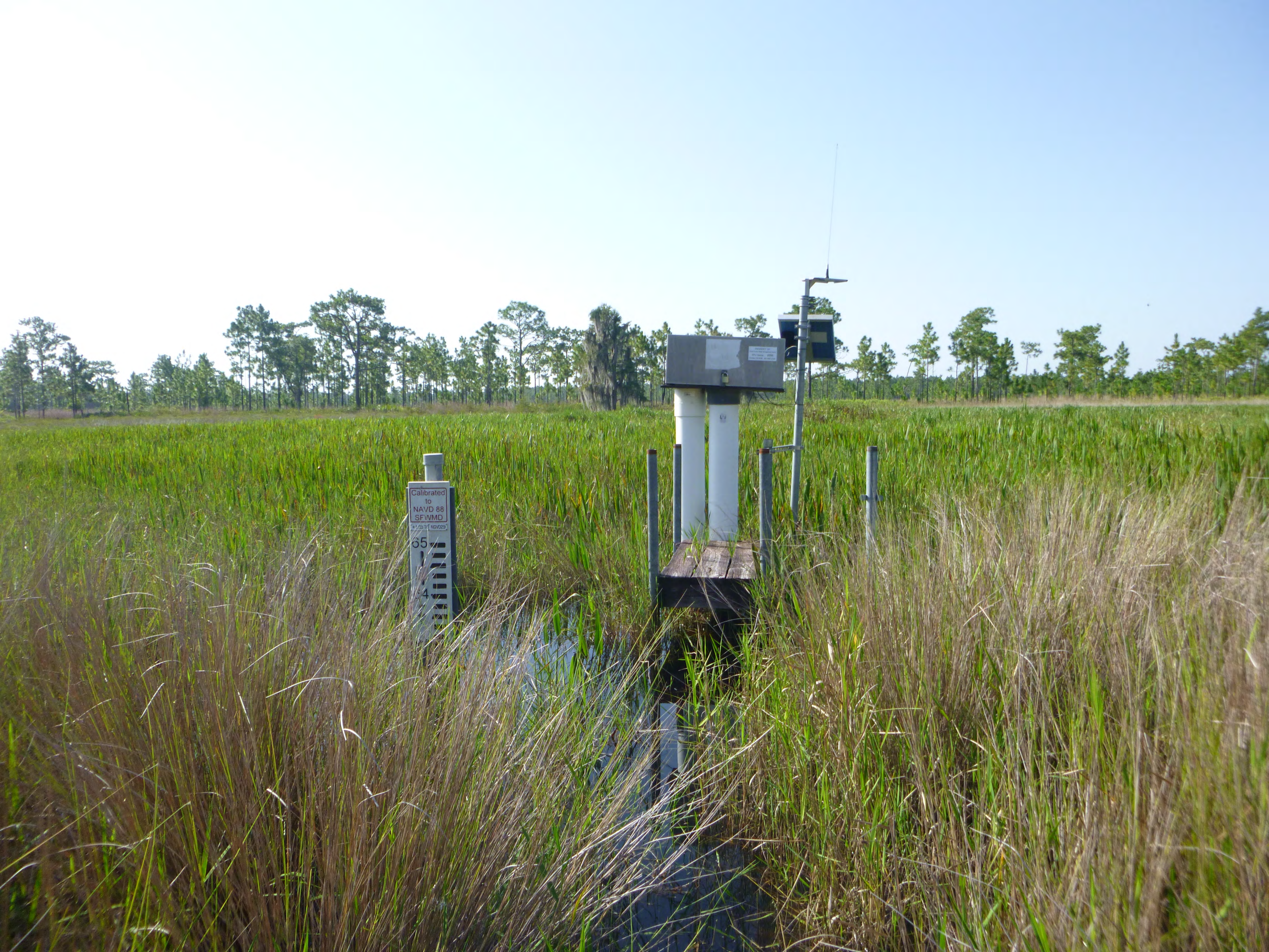
Photographs:

<p>Overall Site</p> 	<p>Benchmark Close Up</p> 	<p>Benchmark Location</p> 
<p>Brass Tag Close Up</p> 	<p>Brass Tag + Reference Mark</p> 	<p>Staff Gauge</p> 

Site Name WR6 SW1		Date of Field Work August 5, 2015
Party Chief Strickland/Clanton	Field Book Name/Number MISC FB # 6X	Page Number 36
Site Benchmark Name WR6 2007	Benchmark Elevation (NAVD88) 63.78 ft	Datum Offset to NGVD29 + 1.05
Reference Elevation (NAVD 88) 67.99 ft		Existing Tag Elevation (Datum) 69.05 ft (NGVD 29)
Notes: Ground elevation = 61.44 ft (NAVD 88). Corpscon v6.0.1 offset = +1.05, Field offset = +1.06		

Photographs:





Calibrated
to
NAVD 88
SEWMD
#12,00111 NAVD08
65
64

PROPERTY OF:

South Florida Water Management District

RTU Name: WR6

Contact SCADA: 561-682-2047

Calibrated
to
NAVD 88
SFWMD

+1.05 TO NGVD29



WARNING!
Failure to install desiccant
properly may cause
equipment failure

In-Situ, Inc. Rugged Cable™

WR 6
ELEV 69.31
DATE 2 12 08
BY EE
MAVD
GW 1
APR 29

INTEGRITY





W R 6 W
 ELEV. 69.05
 DATE 10-19-07
 BY WOOLPERT
 NAVD NGVD 69





STN WR 6 GW 1
ELEV. 68.26
DATE 8-5-15
BY JS TC
NAVD 88 NGVD
OFFSET + 1.05

STN WR 6 SW
ELEV. 67.99
DATE 8-5-15
BY JS TC
NAVD 88 NGVD
OFFSET + 1.05

SEC	Z8	TWP	R27	RGE	Z9
ESTABLISH	NAVD 88	ELEV @	WRG		
STA	+	HI	-	ELEV	BM EL
BM	5.86	69.64			63.78 NAVD 88
2" PVC			1.38	68.26	
8" PVC			1.65	67.99	
GRND			8.2	61.44	
TPDW			6.59	63.05	
BM	5.86				63.78

STRICKLAND'S
CLANTON

COMMENTS

BM WRG 2007 SFWMS ALUM CAP FIS GOOD COND

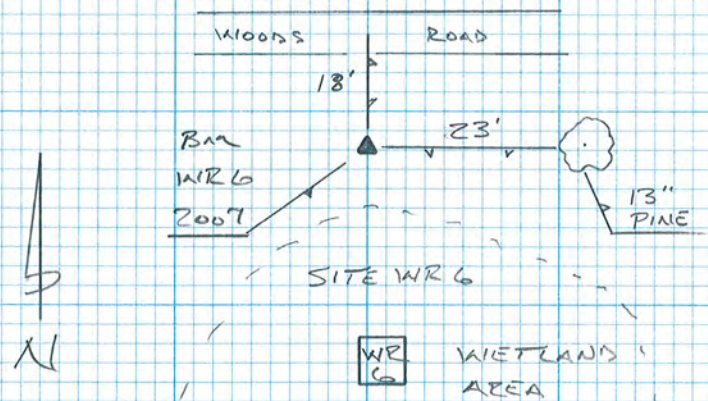
GW1 2" PVC PIPE "V" NOTCH N SIDE

8" REF ATOP OF PLYWOOD PLATFORM N SIDE OF WELL OPENING

GROUNDS @ SITE

TOP OF WATER STAFF GA READS 63.05

BM WRG 2007





Survey Data Entry and Retrieval Application (SDERA) Print Output

Control Point Search Results

Derived Data - Denoted By: **

Designation	WR6	Record State	ACCEPTED
NGS PID			
Project Name	WR06 WELL SITE	Date Entered/Updated	01/25/2012
Updated By	hehmke	Status	GOOD
Party Chief		Type	H/V
Monument Set By	WOOLPERT INC	Date Established	01/01/2007
County	OSCEOLA COUNTY	Section	21
Township	27	Range	29
Quadrangle	LAKE HATCHINEHA	Offset (29 to 88)	
NGS Source BM		CCR Link	
Ctrl Pt Source(s)			

<u>Horizontal</u>	<u>NAD 1927</u>	<u>NAD 1983</u>	<u>Vertical</u>	<u>NGVD 1929</u>	<u>NAVD 1988</u>
Latitude		28 06 51.5	Class		
Longitude		81 24 47.2	Order	3	
Northing(Y)		1374487.0	Elevation	64.82	63.78
Easting(X)		523000.0	Measurement Unit	Feet	Feet
Class					
Order					
NAD83 Adj Year					

Field Book

WO104

Field Book Pages

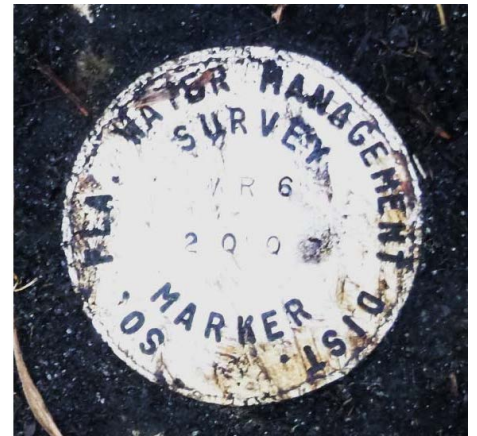
45-54

Stamping

WR6 2007

How to Reach

FROM THE INTERSECTION OF US 17 AND COUNTY ROAD 531, HEAD SOUTH ON COUNTY ROAD 531 FOR 8 MILES TO PLEASANT HILL ROAD. HEAD SOUTH ON PLEASANT HILL ROAD FOR 0.6 OF A MILE TO SCRUB JAY TRAIL. TURN LEFT ON SCRUB JAY TRAIL AND HEAD EAST FOR 1.4 MILES. TURN RIGHT AND HEAD SOUTH ON DIRT ROAD BEFORE THE VISITOR CENTER AT THE DISNEY WILDERNESS PRESERVE, FOLLOW DIRT ROAD SOUTH EAST FOR 0.7 OF A MILE. AT THE T INTERSECTION, TURN LEFT AND HEAD SOUTH FOR 1 MILE, AT THAT POINT, TURN LEFT ONTO ANOTHER DIRT ROAD AND HEAD EAST FOR 0.2 OF A MILE. AT THE Y IN THE ROAD, STAY TO THE LEFT AND FOLLOW ROAD FOR 0.4 OF A MILE. AT THE T INTERSECTION, TURN RIGHT AND HEAD EAST FOR 0.7 OF A MILE. THE BENCH MARK IS SET 97 FEET NORTH WEST OF THE STATION WR6. THE BENCH MARK IS A SFWMD ALUMINUM DISC ON AN 8 INCH DIAMETER AND 40 INCH DEEP CONCRETE MONUMENT INCASED BY A PVC PIPE.



WR6 WELL DATA

LATITUDE: 28^06 51.5

LONGITUDE 81^24 47.2

Y=1374487

X=523000

REFERENCE POINT AT EDGE OF WOOD AS MARKED WITH BLACK MARKER.

EL. 69.05 NGVD 1929 WOOLPERT 10-19-07

STAFF GAUGE WATER EL. 64.378 NGVD 1929

READING : 64.40 NGVD 1929

TIME: 10:56

DATE: 10-19-07

Description

A SFWMD aluminum disc on an 8" diameter & 40" deep concrete monument incased by a PVC pipe.

DISCLAIMER:

The South Florida Water Management District (hereinafter referred to as the DISTRICT) shall not be held liable for improper or incorrect use of the data, information, apparatus, products, processes or materials described and/or contained herein. These data, information, apparatus, products, processes, materials and related graphics are not legal documents and are not intended to be used as such. The user hereby recognizes that the information, data, apparatus, products, processes and materials are dynamic and may change over time without notice. However, the DISTRICT makes no commitment to update the information, data, apparatus, products, processes or materials contained herein.