



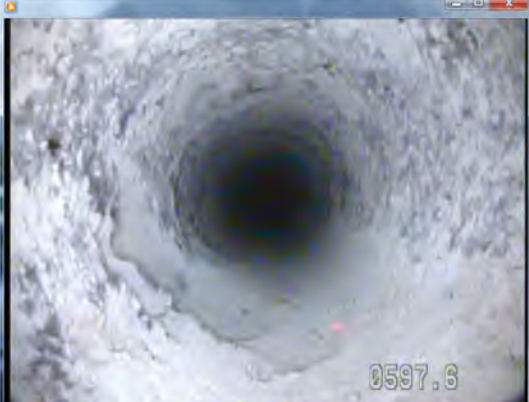



WELL ID: MW-19
LOGGING DATE: JUNE 15, 2011

	
Depth: 0.0 At ground level.	Depth: 570.6 Down view just inside casing.
	
Depth: 590.9 Down view of possible fracture and vuggy porosity.	Depth: 591.9 Possible fracture.
	
Depth: 597.6 Possible vuggy porosity.	Depth: 596.1 Coarse grained limestone.



Depth: 619.8
Possible vuggy porosity.



Depth: 620.9
Possible vugs or hollows.



Depth: 650.2
Down view.



Depth: 650.2
Fine grained limestone with possible vugs.



Depth: 667.6
Down view of color variations.



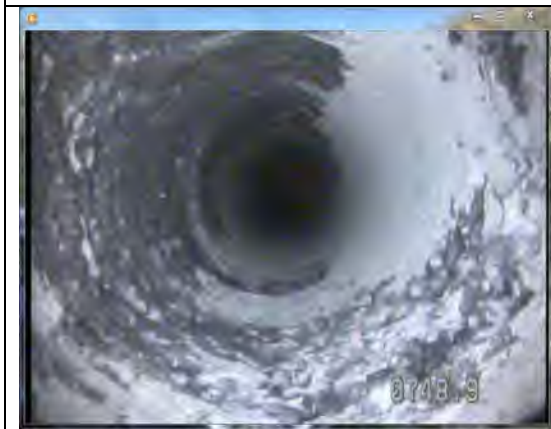
Depth: 666.7
Fine grained limestone with possible vugs.



Depth: 700.2
Down view.



Depth: 700.0
Fine grained limestone with discoloration boundary.



Depth: 748.9
Down view.



Depth: 749.8
Coarse grained limestone with moldic porosity.



Depth: 786.2
Down view of clay bed.



Depth: 787.2
Clay marker bed.



Depth: 800.8
Down view.



Depth: 799.7
Fine grained limestone with discoloration boundary.



Depth: 848.4
Bedding transitions.



Depth: 849.5
Bedding transitions.



Depth: 887.9
Down view of bottom of borehole.



Depth: 889.6
Bedding transitions.