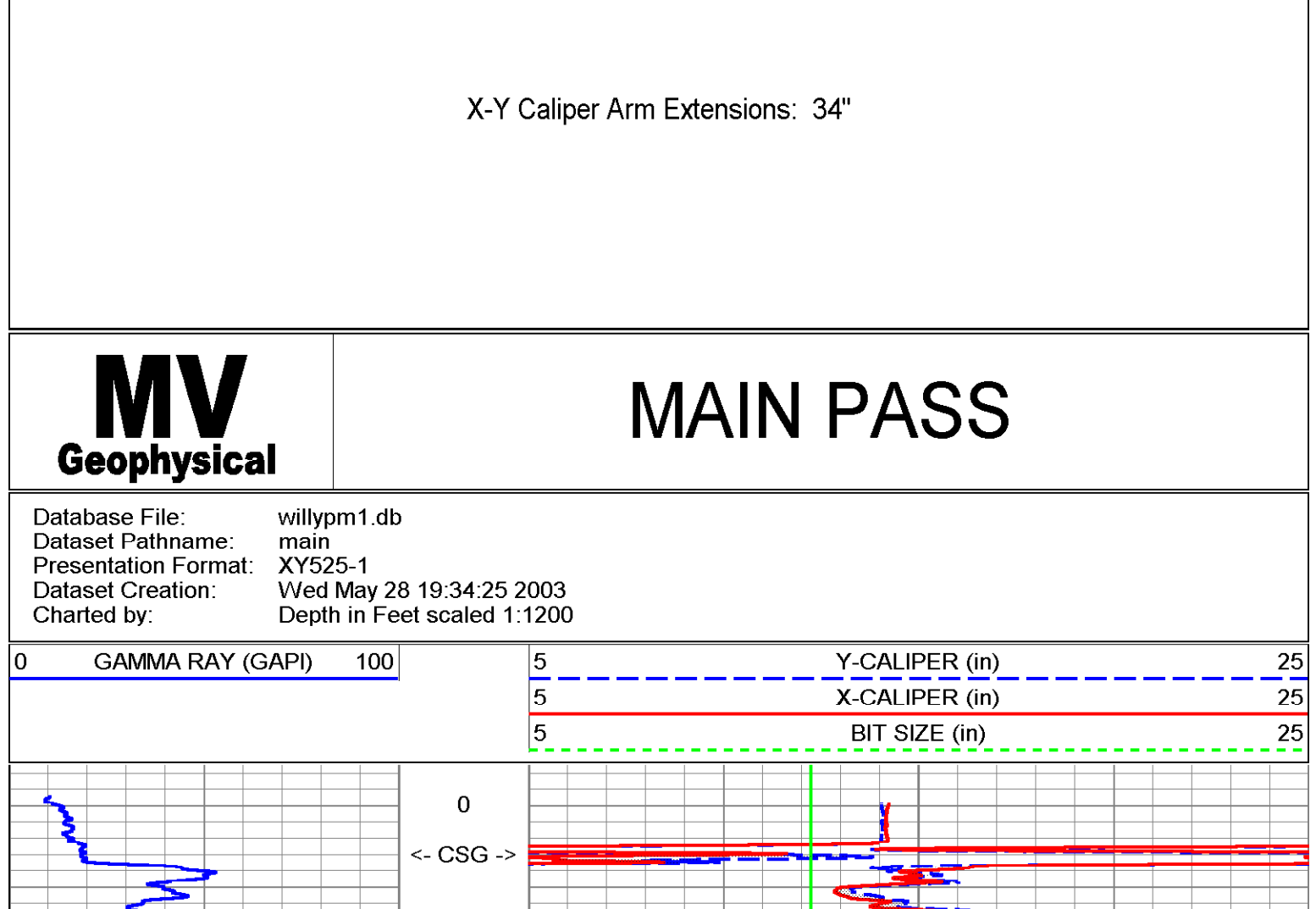


Company	Diversified Drilling Corp.	Well	CRASR-EXPM-1	Location	Sec. 14 T40S R37E	Other Services	
Field	Port Mayaca	County	Martin	DIL/SP	SFWMD / CH2M Hill, Inc.	BH/CVD/L	
State/Prv	Florida	City	Port Mayaca	Permanet Datum	G.L.	Elevation	
Log Measured From	Drilling Measured From	Log Measured From	G.L.	D.F.	G.L.	Elevation	
Date	28-MAY-2003	Run Number	ONE	Depth Driller	230'	Bottom Logger	228'
Depth	230'	Bottom Logged Interval	228'	Top Log Interval	228'	SL/GR/DE	
Bottom Logged Interval	228'	Top Log Interval	228'	Type Fluid	NA/NA	Density / Viscosity	na
Top Log Interval	228'	Estimated Cement Top	na	Max. Recorded Temp.	na		
Time Well Ready	19:00 6/28/03	Time Logger on Bottom	19:00 6/28/03	Equipment Number	MM/GS-1	Recorded By	F. Myers
Location	Port Mayaca	Witnessed By	R. Simon (BFA)	Well ID/DCI	Willy (UDCI)	Logging Record	
Run Number	ONE	Bottom Record	31	Size	230'	Weight	From
Run ONE	12.25"	Size	230'	Weight	From	To	
Casing Record	4 1/2"	VIGR/FR	0.375' W/T	TOP SURFACE		Bottom	31'
Prod. Casing	2.35-2x						
Production String	2003135						
License No.	P.O. # 21766	Job No.	2092				

<<< Fold Here >>>

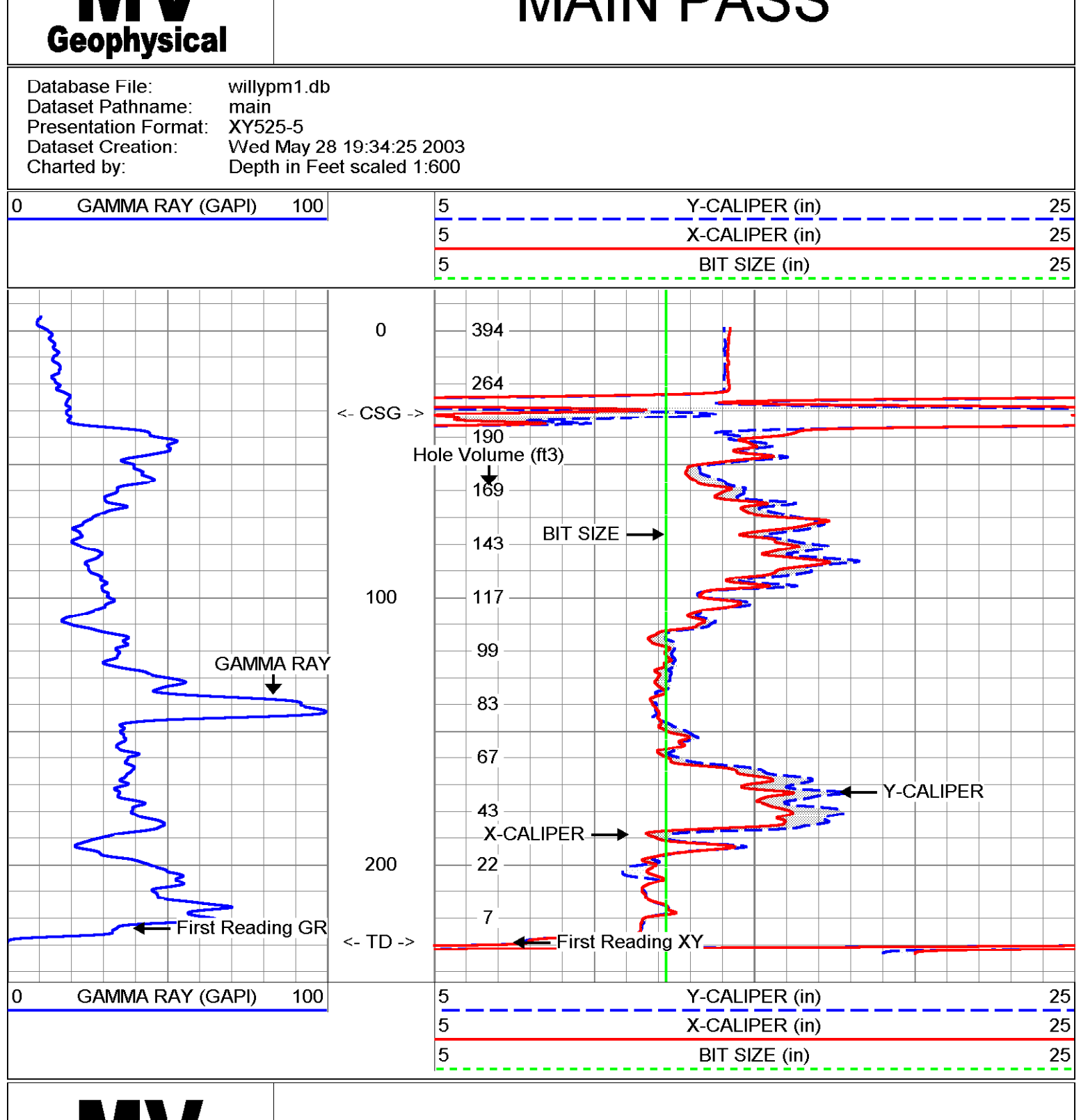
All interpretations are opinions based on inferences from electrical or other measurements and we cannot and do not guarantee the accuracy or correctness of any interpretation, and we shall not, except in the case of gross or willful negligence on our part, be liable or responsible for any loss, costs, damages, or expenses incurred or sustained by anyone resulting from any interpretation made by any of our officers, agents or employees. These interpretations are also subject to our general terms and conditions set out in our current Price Schedule.



MV Geophysical MAIN PASS

Database File: willypm1.db
 Dataset Pathname: main
 Presentation Format: XY525-1
 Dataset Creation: Wed May 28 19:34:25 2003
 Charted by: Depth in Feet scaled 1:1200

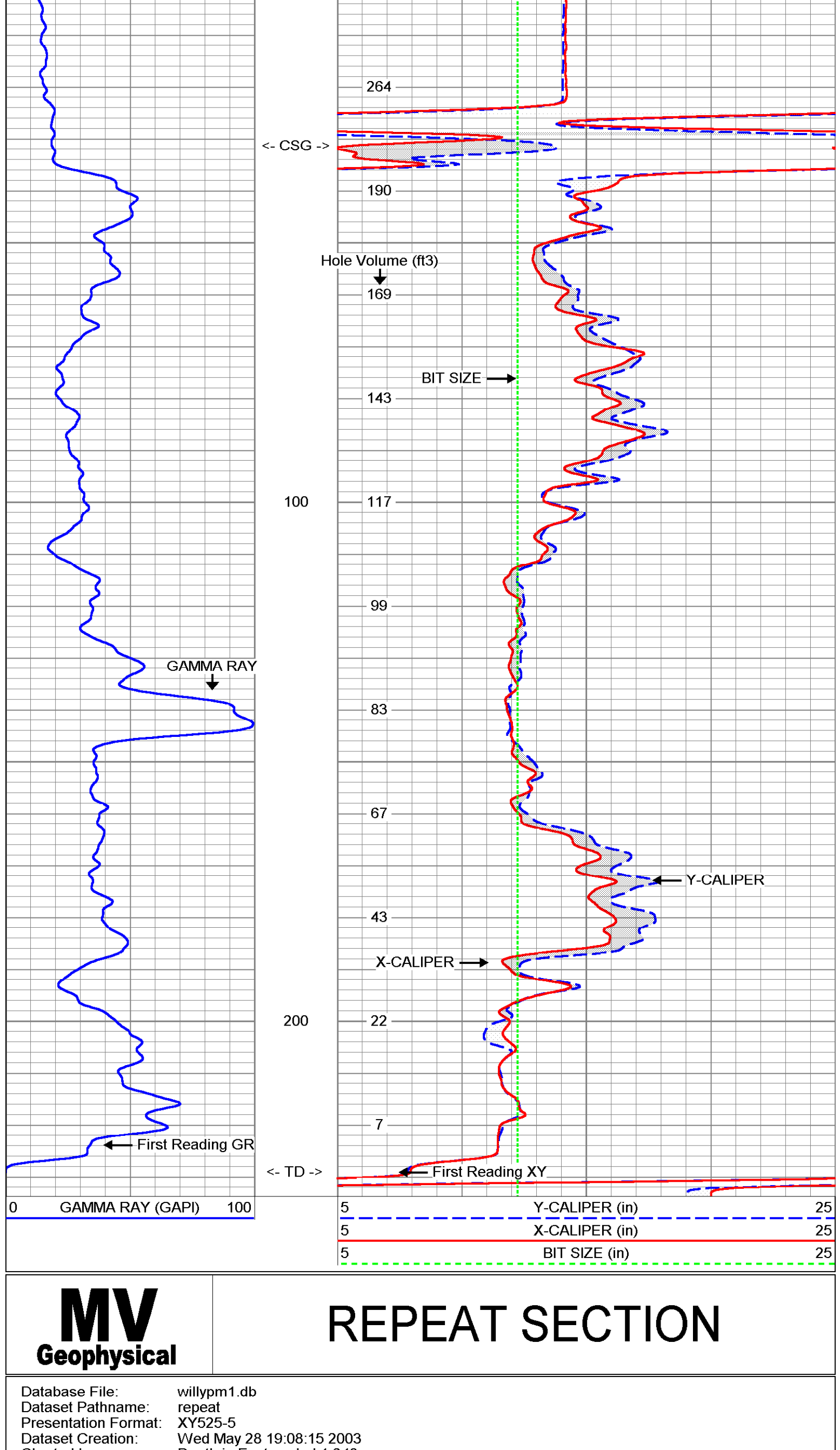
0	GAMMA RAY (GAPI)	100	5	Y-CALIPER (in)	25
			5	X-CALIPER (in)	25
			5	BIT SIZE (in)	25



MV Geophysical MAIN PASS

Database File: willypm1.db
 Dataset Pathname: main
 Presentation Format: XY525-5
 Dataset Creation: Wed May 28 19:34:25 2003
 Charted by: Depth in Feet scaled 1:600

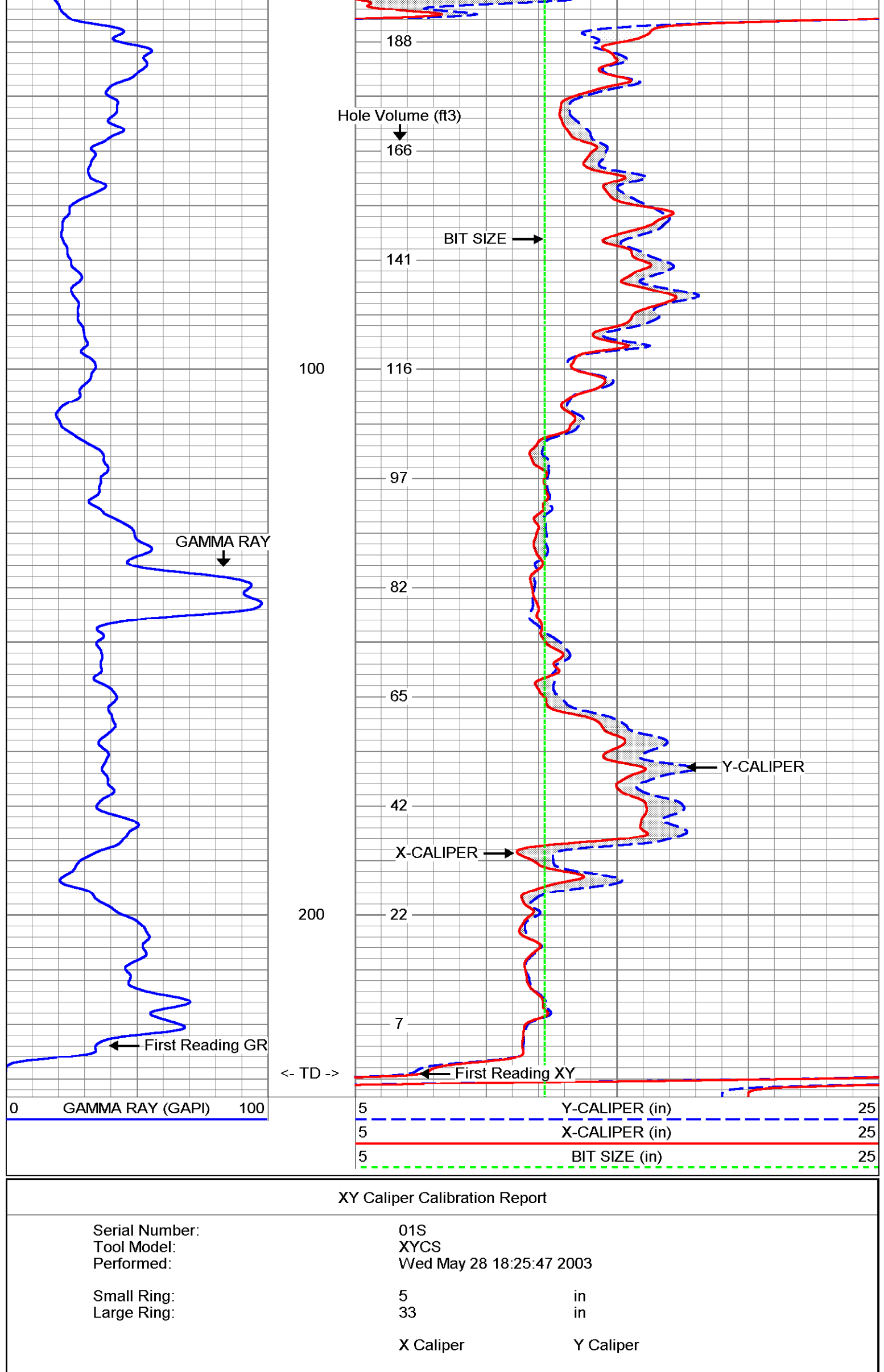
0	GAMMA RAY (GAPI)	100	5	Y-CALIPER (in)	25
			5	X-CALIPER (in)	25
			5	BIT SIZE (in)	25



MV Geophysical REPEAT SECTION

Database File: willypm1.db
 Dataset Pathname: repeat
 Presentation Format: XY525-5
 Dataset Creation: Wed May 28 19:08:15 2003
 Charted by: Depth in Feet scaled 1:240

0	GAMMA RAY (GAPI)	100	5	Y-CALIPER (in)	25
			5	X-CALIPER (in)	25
			5	BIT SIZE (in)	25

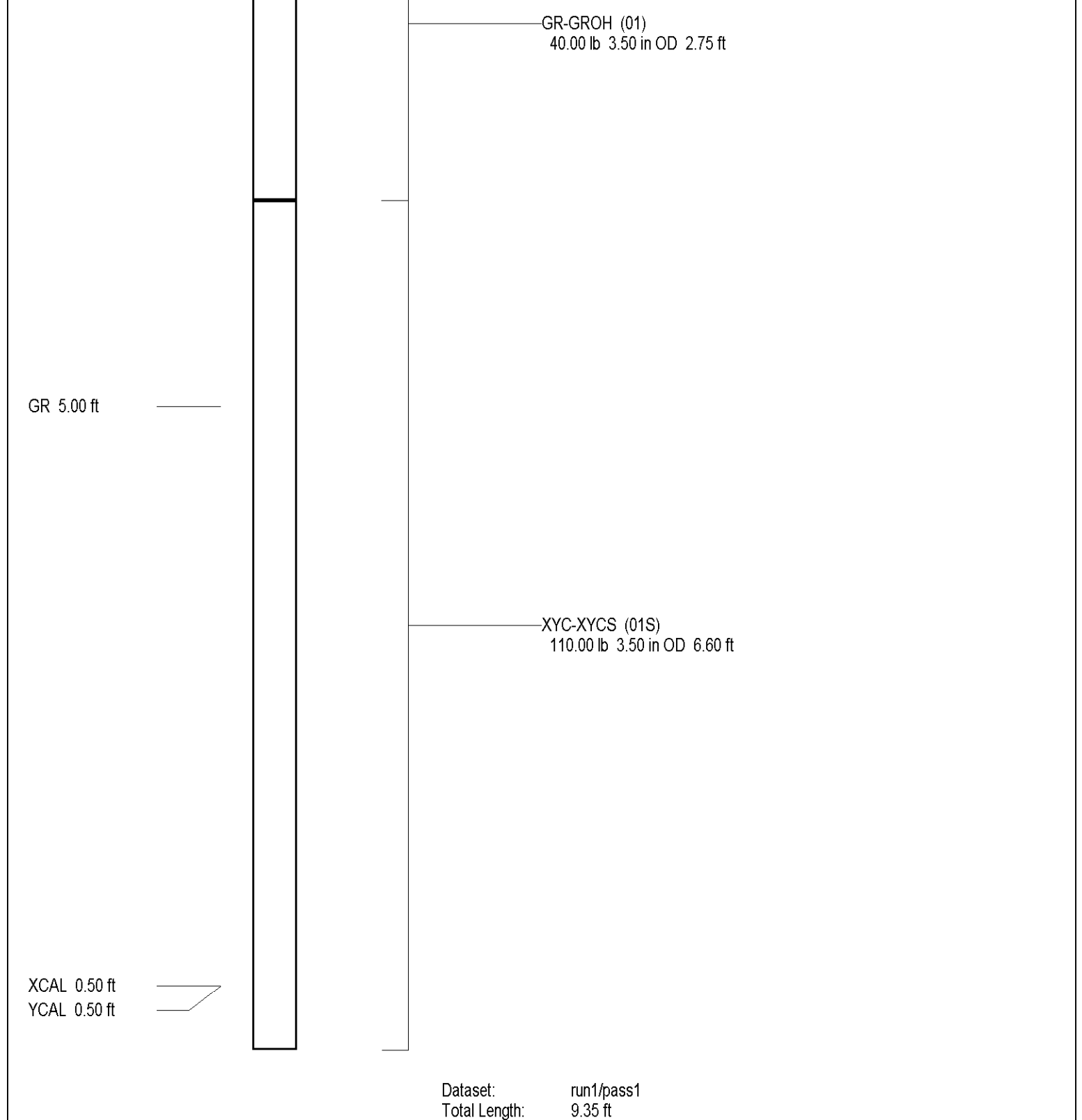


XY Caliper Calibration Report

Serial Number:	01S		
Tool Model:	XYCS		
Performed:	Wed May 28 18:25:47 2003		
Small Ring:	5	in	
Large Ring:	33	in	
	X Caliper	Y Caliper	
Reading with Small Ring:	497.817	507.143	cps
Reading with Large Ring:	1039.76	1045.01	cps
Gain:	0.0516658	0.0520579	
Offset:	-20.7201	-21.4008	

Gamma Ray Calibration Report

Serial Number:	01		
Tool Model:	GROH		
Performed:	Wed May 28 08:47:50 2003		
Calibrator Value:	120	GAPI	
Background Reading:	10.456	cps	
Calibrator Reading:	153.668	cps	
Sensitivity:	0.837919	GAPI/cps	



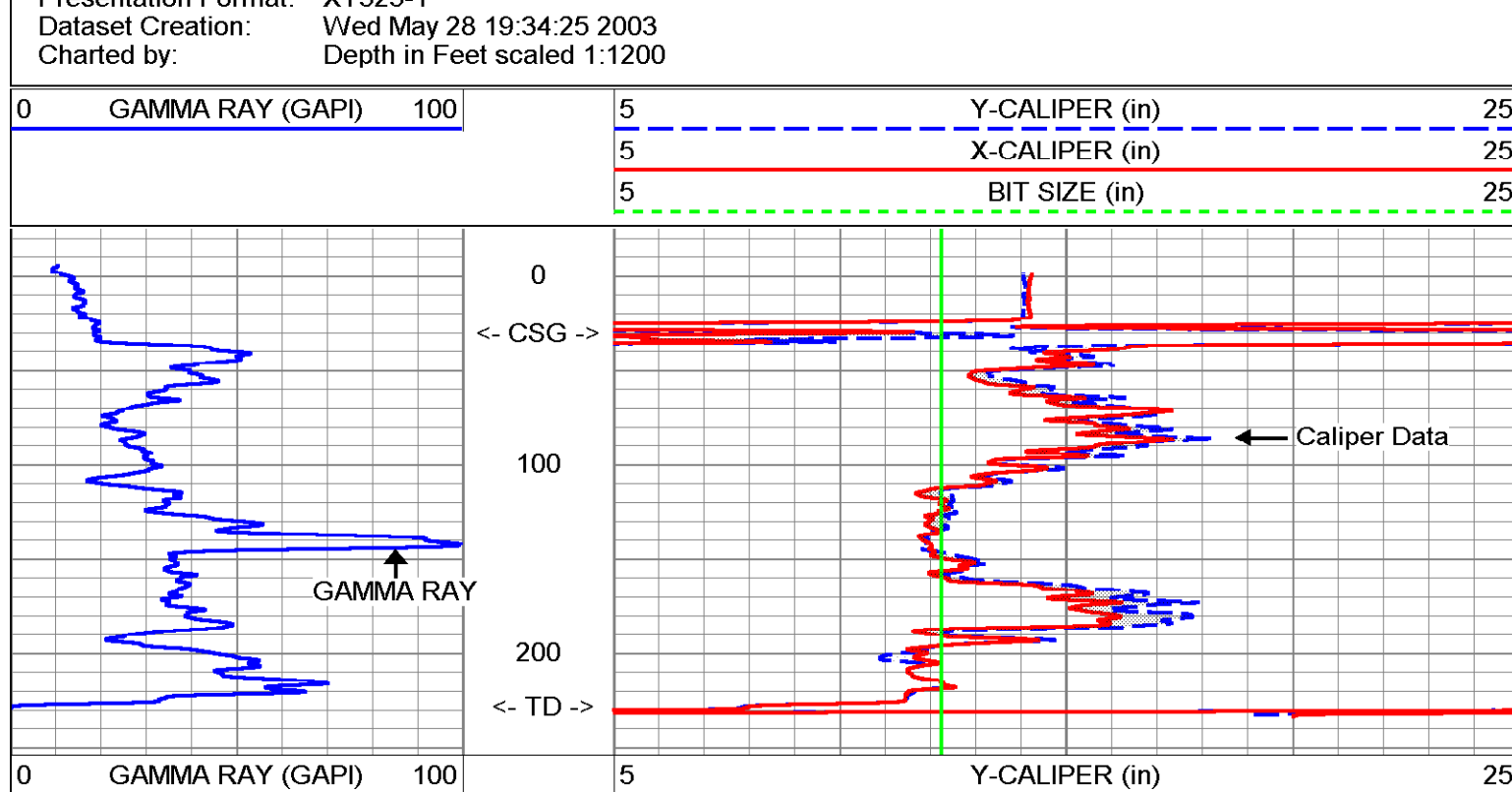
Company	Diversified Drilling Corp.	Well	CRASR-EXPM-1	Location	Sec. 14 T40S R37E	Other Services	
Field	Port Mayaca	County	Port Mayaca	DIL/SP		BH/CVD/L	
State/Prv	Florida	City	Martin	Log Measured From	SFWMD / CH2M Hill, Inc.		
Permanent Datum	G.L.	Elevation		K.B.			
Log Measured From	G.L.	D.F.					
Drilling Measured From	G.L.						
Date	28-MAY-2003	Run Number	ONE				
Depth Driller	230'	Depth Logger	228'				
Bottom Logged Interval	228'	Top Logged Interval	228'				
Top Log Interval	228'	Bottom Log Interval	228'				
Type Fluid	NA	Density / Viscosity	NA				
Max. Recorded Temp.	na	Estimated Cement Top	NA				
Time Well Ready	19:00 6/28/03	Time Logger on Bottom	19:00 6/28/03				
Equipment Number	MM/SS-1	Recorded By	F. Myers				
Witnessed By	R. Simon (BFA)	Witnessed By	Willy (DCCI)				
Run Number	ONE	Bottom Record	To	Size	Weight	From	To
Run ONE	12.25"	31	230'				
Casing Record	4 1/2"	Surface String	0.375' W/T				
Production String	2.35-2x						
Log Case No.	2003135	P.O. #	21766				
		Job No.	2092				

<<< Fold Here >>>

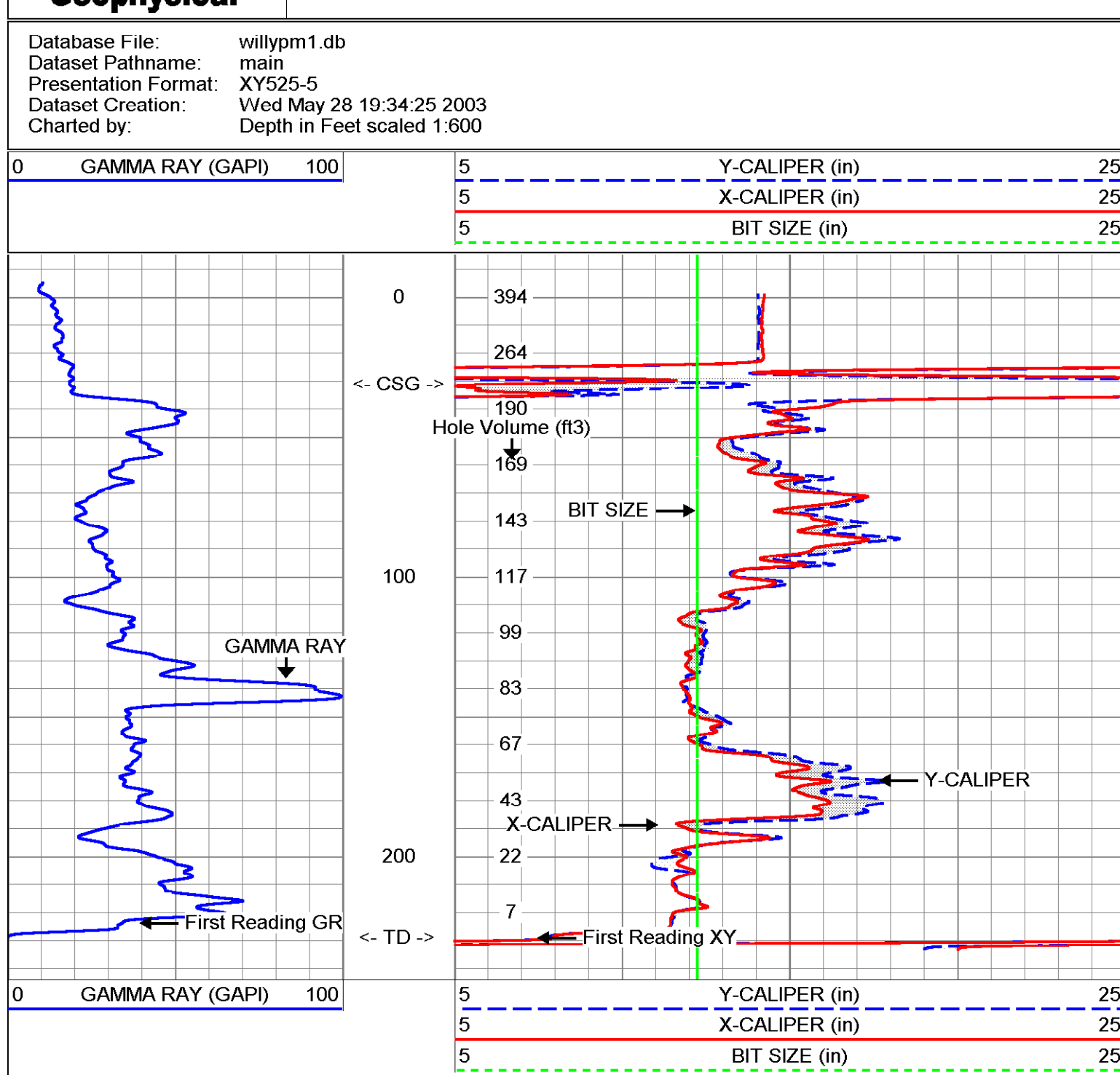
All interpretations are opinions based on inferences from electrical or other measurements and we cannot and do not guarantee the accuracy or correctness of any interpretation, and we shall not, except in the case of gross or willful negligence on our part, be liable or responsible for any loss, costs, damages, or expenses incurred or sustained by anyone resulting from any interpretation made by any of our officers, agents or employees. These interpretations are also subject to our general terms and conditions set out in our current Price Schedule.

Comments

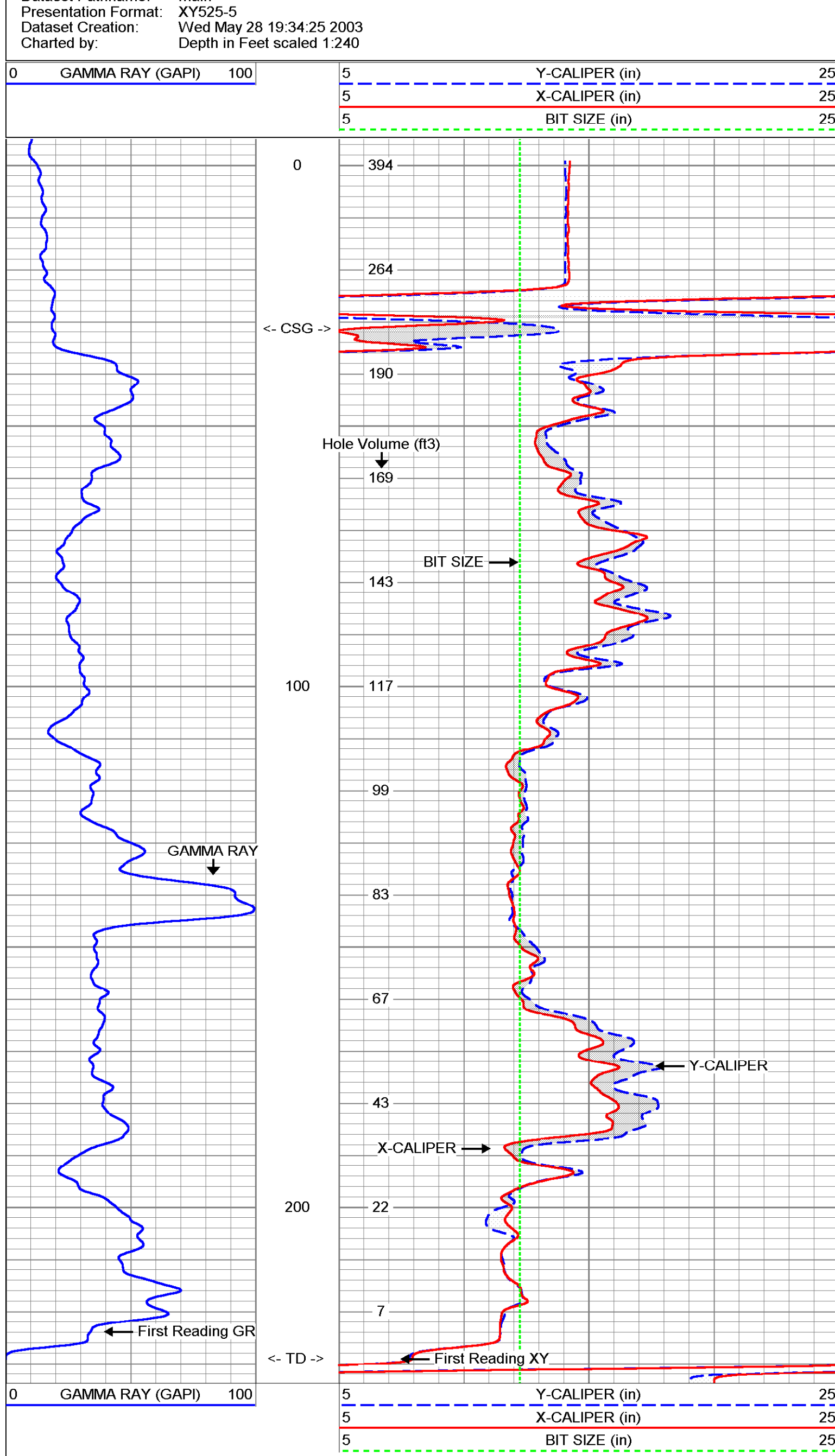
X-Y Caliper Arm Extensions: 34"



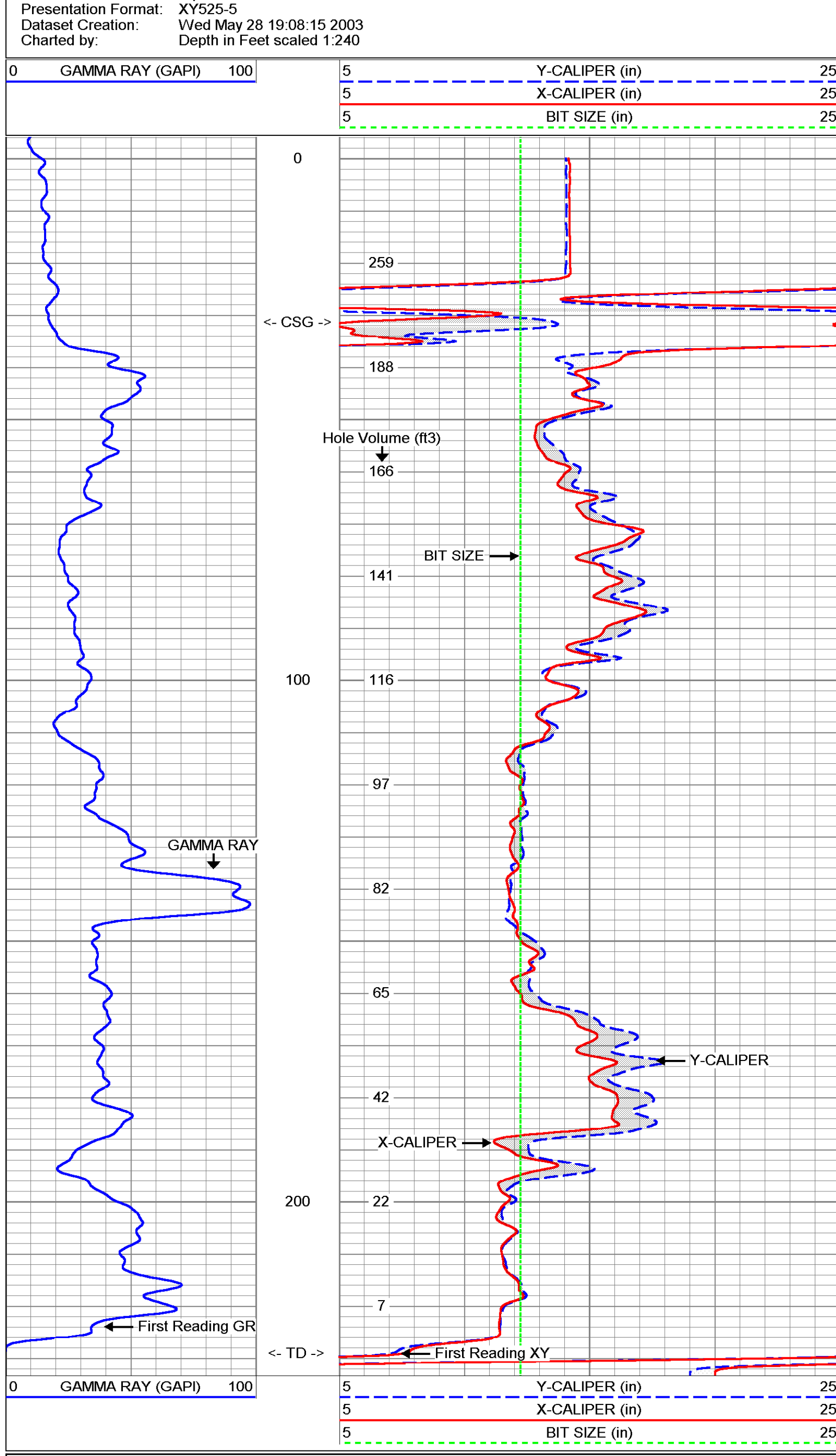
Database File: willypm1.db
 Dataset Pathname: main
 Presentation Format: XY525-5
 Dataset Creation: Wed May 28 19:34:25 2003
 Charted by: Depth in Feet scaled 1:600



Database File: willypm1.db
 Dataset Pathname: main
 Presentation Format: XY525-5
 Dataset Creation: Wed May 28 19:34:25 2003
 Charted by: Depth in Feet scaled 1:600



Database File: willypm1.db
 Dataset Pathname: main
 Presentation Format: XY525-5
 Dataset Creation: Wed May 28 19:34:25 2003
 Charted by: Depth in Feet scaled 1:240



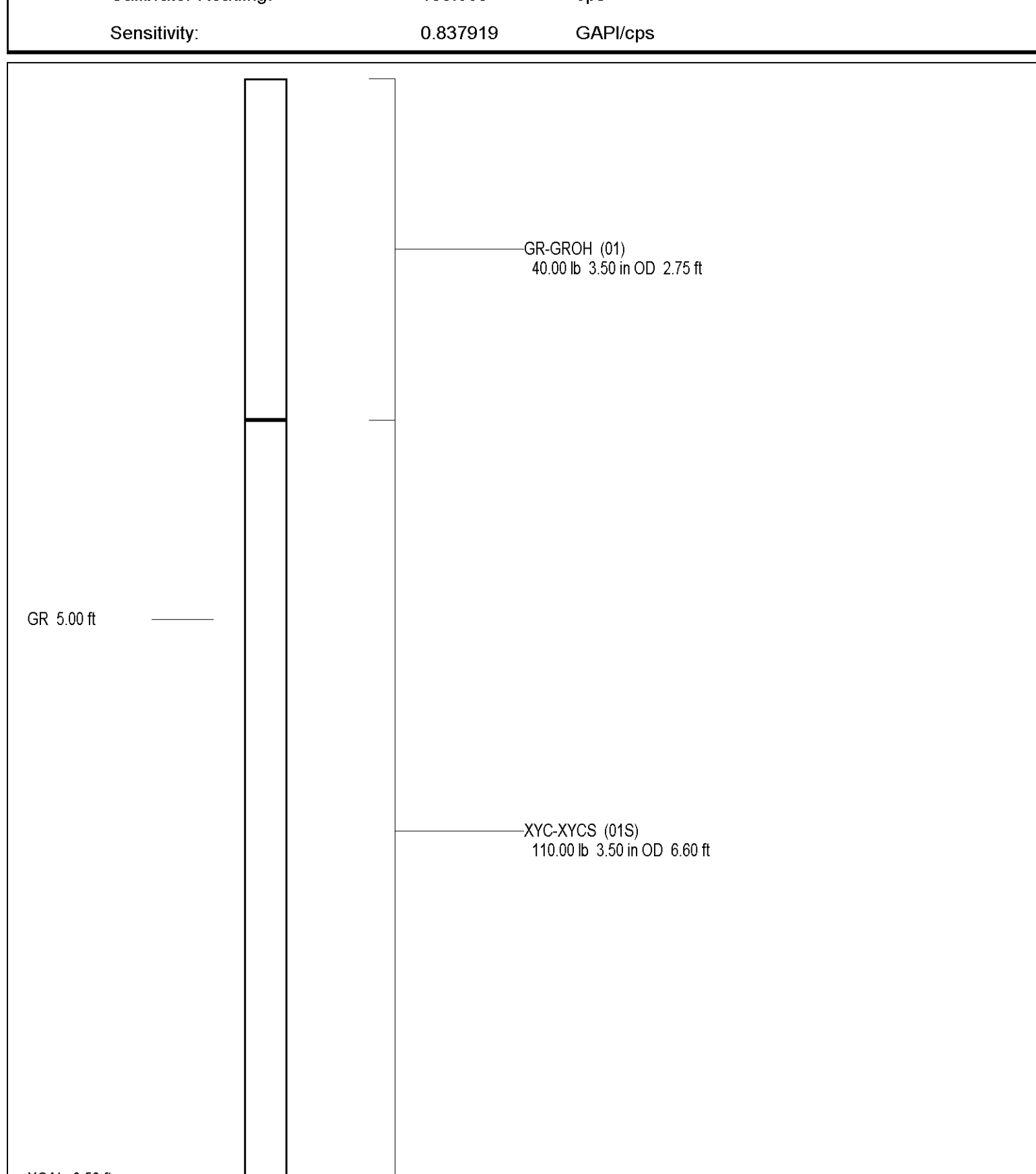
Database File: willypm1.db
 Dataset Pathname: repeat
 Presentation Format: XY525-5
 Dataset Creation: Wed May 28 19:08:15 2003
 Charted by: Depth in Feet scaled 1:240

XY Caliper Calibration Report

Serial Number:	01S		
Tool Model:	XYCS		
Performed:	Wed May 28 18:25:47 2003		
Small Ring:	5	in	
Large Ring:	33	in	
	X Caliper	Y Caliper	
Reading with Small Ring:	497.817	507.143	cps
Reading with Large Ring:	1039.76	1045.01	cps
Gain:	0.0516658	0.0520579	
Offset:	-20.7201	-21.4008	

Gamma Ray Calibration Report

Serial Number:	01		
Tool Model:	GROH		
Performed:	Wed May 28 08:47:50 2003		
Calibrator Value:	120	GAPI	
Background Reading:	10.456	cps	
Calibrator Reading:	153.668	cps	
Sensitivity:	0.837919	GAPI/cps	



Dataset: run1/pass1
 Total Length: 9.35 ft
 Total Weight: 150.00 lb
 O.D.: 3.50 in

Company Diversified Drilling Corp.
 Well EXPM-1
 Field Port Mayaca
 County Martin
 State/Prv Florida

Company Diversified Drilling Corporation
 Well EXPM-1
 Field Port Mayaca
 County Martin
 State/Prv Florida

Location Sec. 14 T40S R37E
 FDEP Permit #: 096641-001UC
 SFWMD / CH2M Hill, Inc.

Permanent Datum G.L.
 Log Measured From G.L.
 Drilling Measured From G.L.

Other Services NONE

Elevation
 Elevation
 Elevation

Date 11-JUNE-2003

Run Number THREE
 Depth Driller 158'
 Depth Logger 150' Cnt. Plug
 Bottom Logged Interval 150'
 Top Log Interval SURFACE
 Open Hole Size 34"

Type Fluid MUD
 Density / Viscosity Unknown
 Max. Recorded Temp. 109 degF
 Estimated Cement Top SURFACE
 Time Well Ready 08:00 06/11/03
 Time Logger on Bottom 08:30 6/11/03

Equipment Number MM/GS-1
 Location Ft. Myers
 Recorded By S. Miller
 Witnessed By Willy (DDC)

Borehole Record		Tubing Record	
Run Number	Bit From To	Size	Weight From To
ONE	12.25" 31'	230"	
TWO	40" 31'	158"	

Casing Record		Top		Bottom	
Surface String	Size	Wgt/Ft	WT	WT	WT
Surf. String	42"	0.375"	WT	SURFACE	31'
Prod. String	34"	0.375"	WT	SURFACE	155'
Production String					

Inner 2-25-2x
 Invoice No. 2003153
 P.O. # 22346
 Job No.: 2082
 * FINAL PRINT *

<<< Fold Here >>>

All interpretations are opinions based on inferences from electrical or other measurements and we cannot and do not guarantee the accuracy or correctness of any interpretation, and we shall not, except in the case of gross or willful negligence on our part, be liable or responsible for any loss, costs, damages, or expenses incurred or sustained by anyone resulting from any interpretation made by any of our officers, agents or employees. These interpretations are also subject to our general terms and conditions set out in our current Price Schedule.

Comments

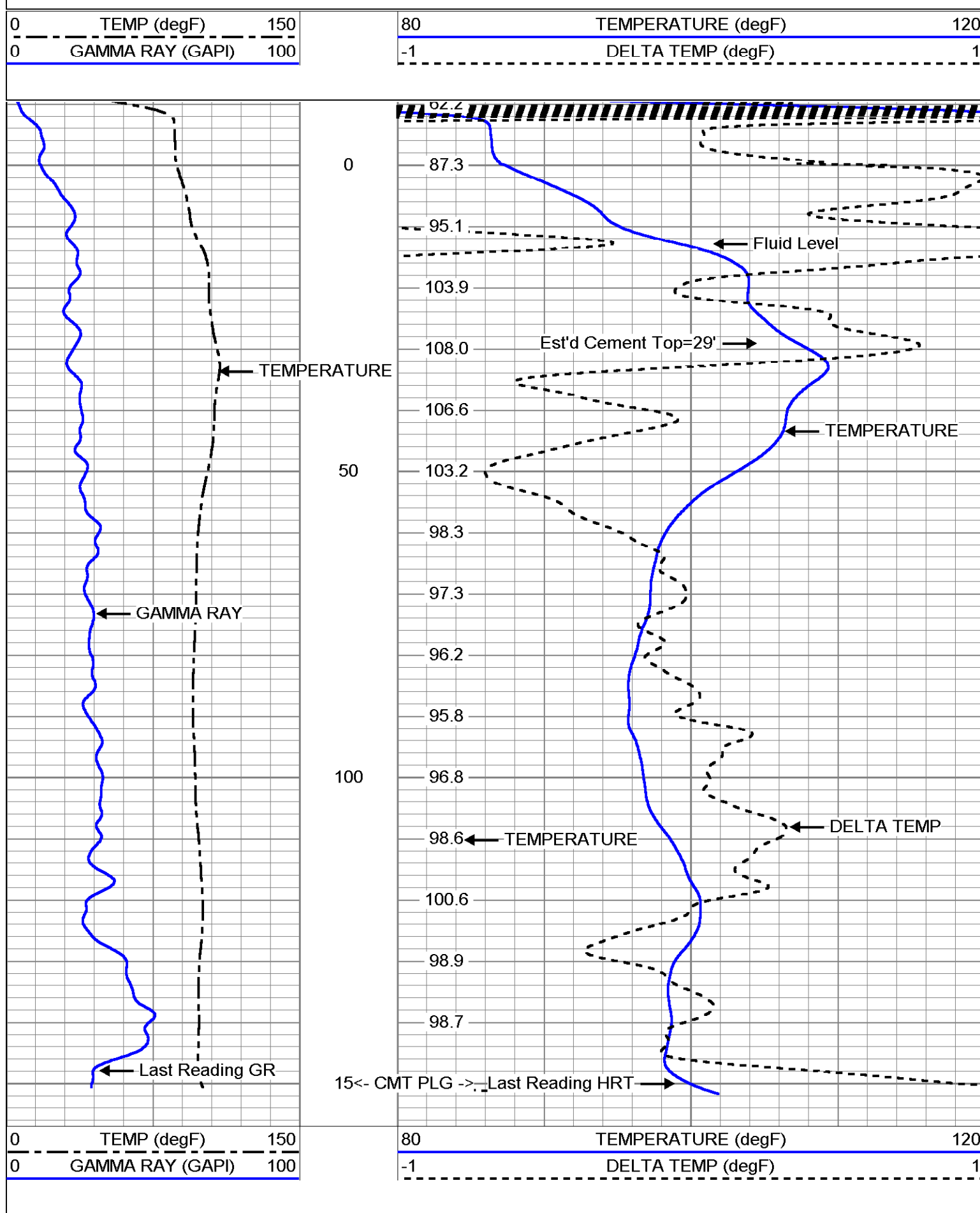
ESTIMATED CEMENT TOP
 Stage #1
 Logger 29'

TEMPERATURE CALIBRATION REPORT
 (performed: 18-MAY-2003 11:45)
 DEG-F CPS
 33.9 141.25
 151.8 2743.11

MV Geophysical

Stage 1 Cement Top = 29'

Database File: willypm1.db
 Dataset Pathname: run3/pass1
 Presentation Format: CTLLAKEO
 Dataset Creation: Wed Jun 11 08:21:36 2003 by Log VER_5.3
 Charted by: Depth in Feet scaled 1:240

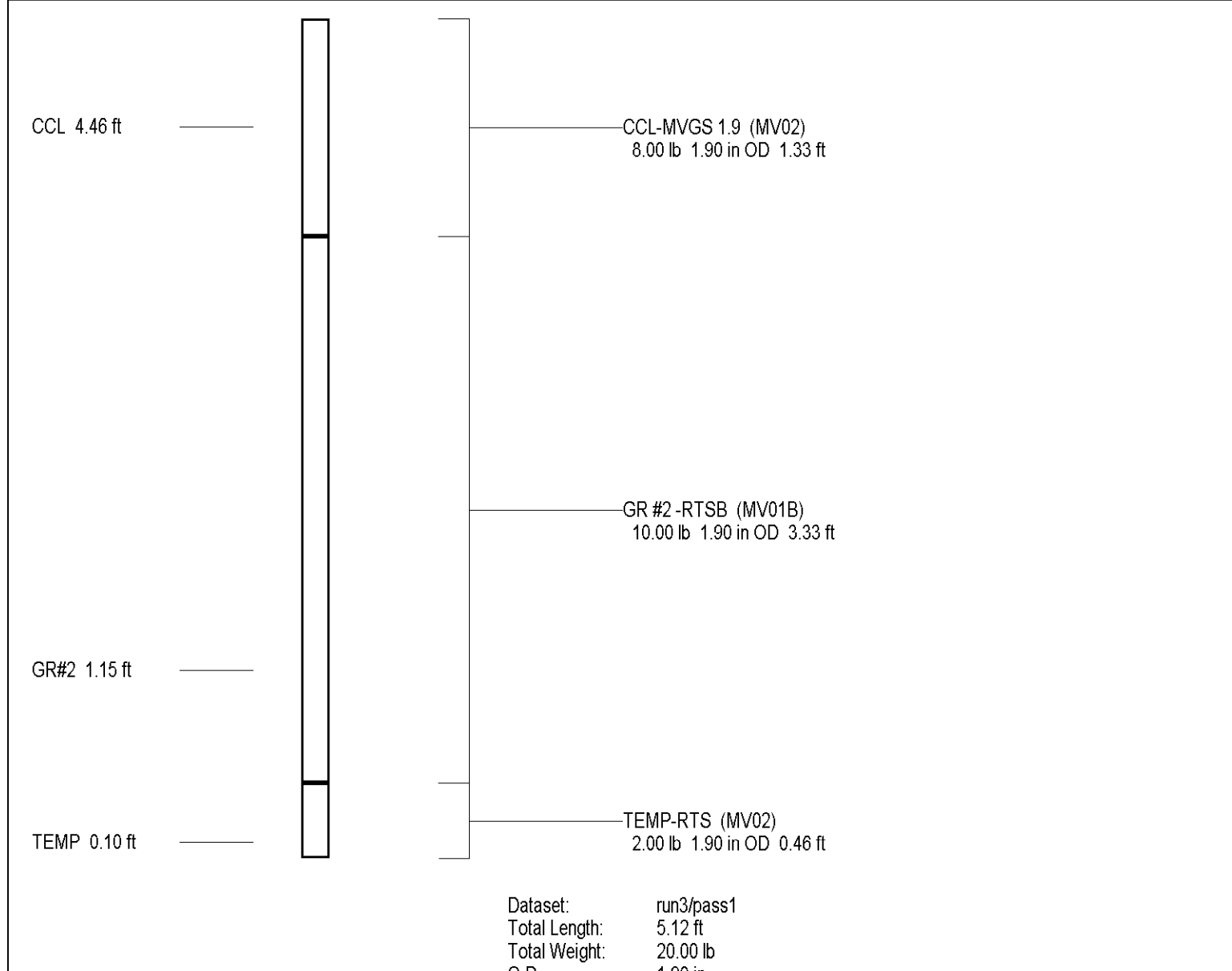


Gamma Ray Calibration Report

Serial Number: MV01B
 Tool Model: RTSB
 Performed: Wed Jun 11 08:20:05 2003

Calibrator Value: 120 GAPI
 Background Reading: 14.7817 cps
 Calibrator Reading: 120.523 cps

Sensitivity: 1.13485 GAPI/cps





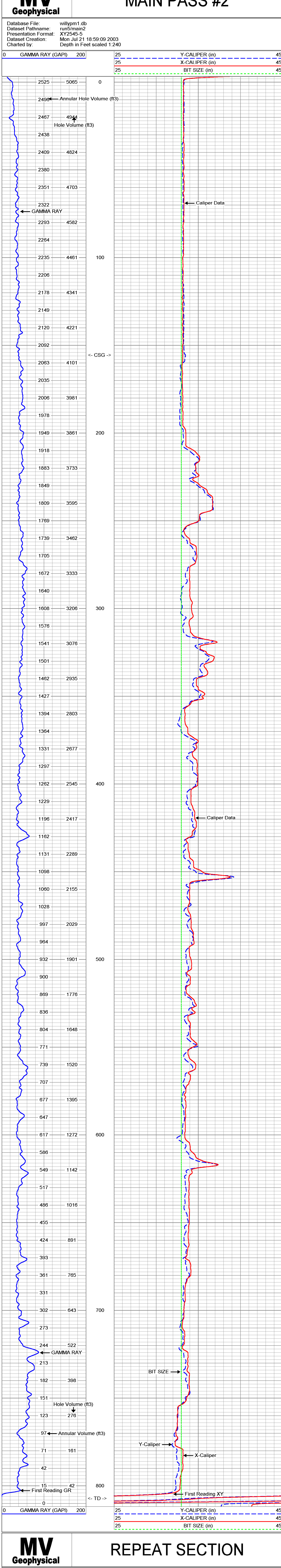
**X-Y CALIPER
GAMMA RAY
LOG**

Company Diversified Drilling Corp.		Company Diversified Drilling Corporation	
Well	EXPM-1	Well	EXPM-1
Field	Port Mayaca	Field	Port Mayaca
County	Martin	County	Martin
State/Prv	Florida	State/Prv	Florida
Location	Sec. 14 T40S R37E FDEP Permit #: 096941-001UC SFMWD / CH2M Hill, Inc.	Location	Sec. 14 T40S R37E FDEP Permit #: 096941-001UC SFMWD / CH2M Hill, Inc.
Permanent Datum	G.L.	Permanent Datum	G.L.
Log Measured From	G.L.	Log Measured From	G.L.
Elevation		Elevation	
Drilling Measured From	G.L.	Drilling Measured From	G.L.
Date	21-JUL-Y-2003	Date	21-JUL-Y-2003
Run Number	FIVE	Run Number	FIVE
Depth Other	805	Depth Other	807
Bottom Logged Interval	806	Bottom Logged Interval	805
Top Log Interval	SURFACE	Top Log Interval	SURFACE
Open Hole Size	3"	Open Hole Size	3"
Type Fluid	MUD	Type Fluid	MUD
Density / Viscosity	9.4#/95S	Density / Viscosity	9.4#/95S
Max. Recommended Temp.	34 deg F	Max. Recommended Temp.	34 deg F
SI Units	SI Units	SI Units	SI Units
Time Lapper on Bottom	06:30 7/21/03	Time Lapper on Bottom	06:30 7/21/03
Time Vial Read	17:30 7/21/03	Time Vial Read	17:30 7/21/03
Equipment Number	MMS-1	Equipment Number	MMS-1
Location	F. Myers	Location	F. Myers
Recorded By	SMITH/MATHENA	Recorded By	SMITH/MATHENA
Witnessed By	M. Schilling/CH2M	Witnessed By	M. Schilling/CH2M
Well (DGS)		Well (DGS)	
P Pattern (DGS)		P Pattern (DGS)	
Run Number	12.25"	Run Number	12.25"
TIME	40"	TIME	40"
THRE	9.875"	THRE	9.875"
FT	33"	FT	33"
Casing Record	155'	Casing Record	155'
Surface String	42"	Surface String	42"
Prod. String	34"	Prod. String	34"
Production String	2.56 2%	Production String	2.56 2%
Prices No.	2003179	Prices No.	2003179
P. O. #.	22897	P. O. #.	22897
Job No.	2092	Job No.	2092
* FINAL PRINT *			

Maximum Caliper Arm Extension: 56"
FUTURE CASING SIZE: 24"

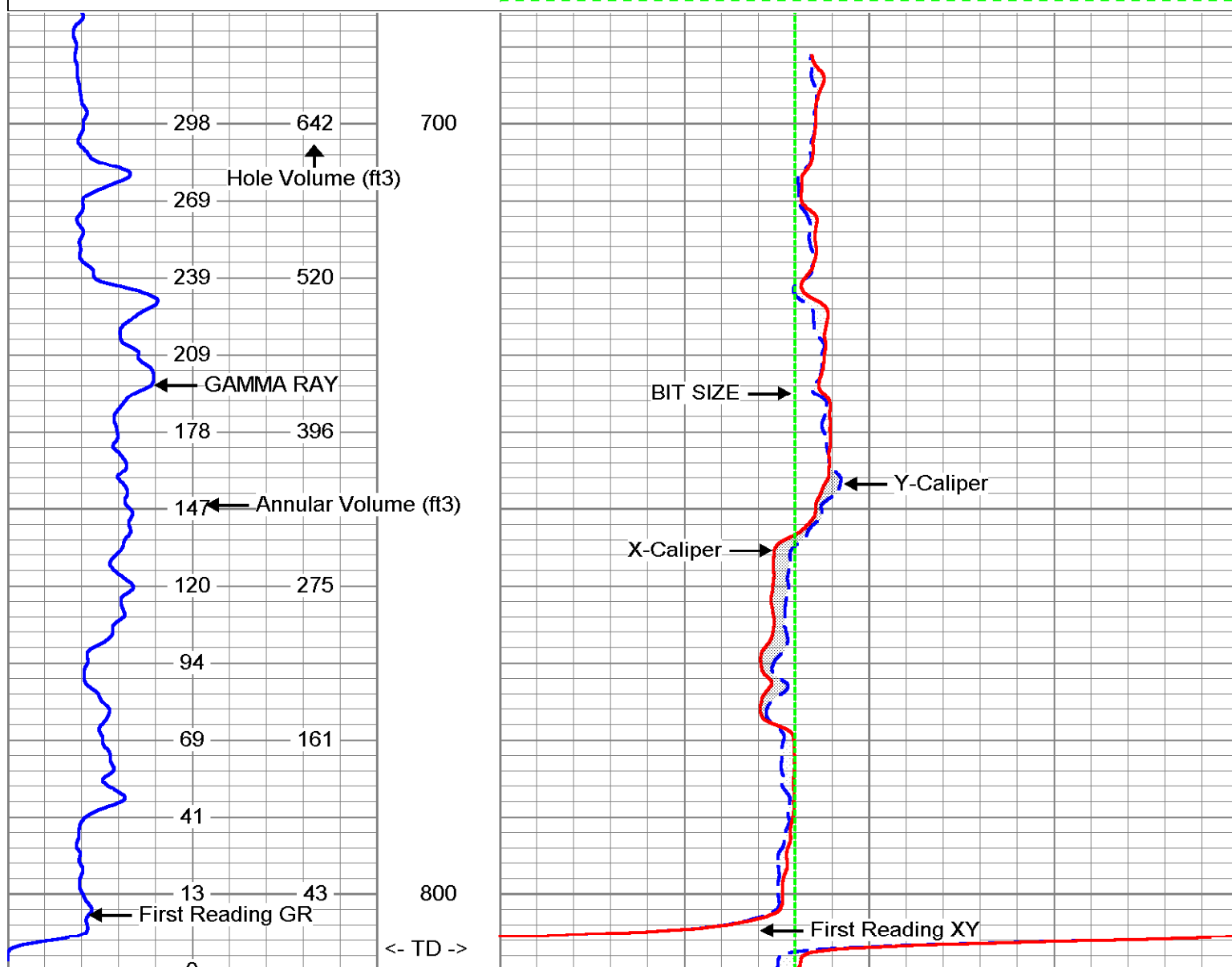
MAIN PASS #2

Database File: willypm1.db
Dataset Pathname: run5/main2
Presentation Format: XY2545-5
Dataset Creation: Mon Jul 21 18:59:09 2003
Charted by: Depth in Feet scaled 1:240



REPEAT SECTION

Database File: willypm1.db
Dataset Pathname: run5/repeat4
Presentation Format: XY2545-5
Dataset Creation: Mon Jul 21 19:01:26 2003
Charted by: Depth in Feet scaled 1:240



XY Caliper Calibration Report

Serial Number: 01L
Tool Model: XYCL
Performed: Mon Jul 21 17:41:39 2003

Small Ring: 33.25 in
Large Ring: 46.5 in

X Caliper Y Caliper

Reading with Small Ring: 831.647 854.663 cps
Reading with Large Ring: 1040.18 1063.29

Gain: 0.0635395 0.0635093
Offset: -19.5924 -21.029

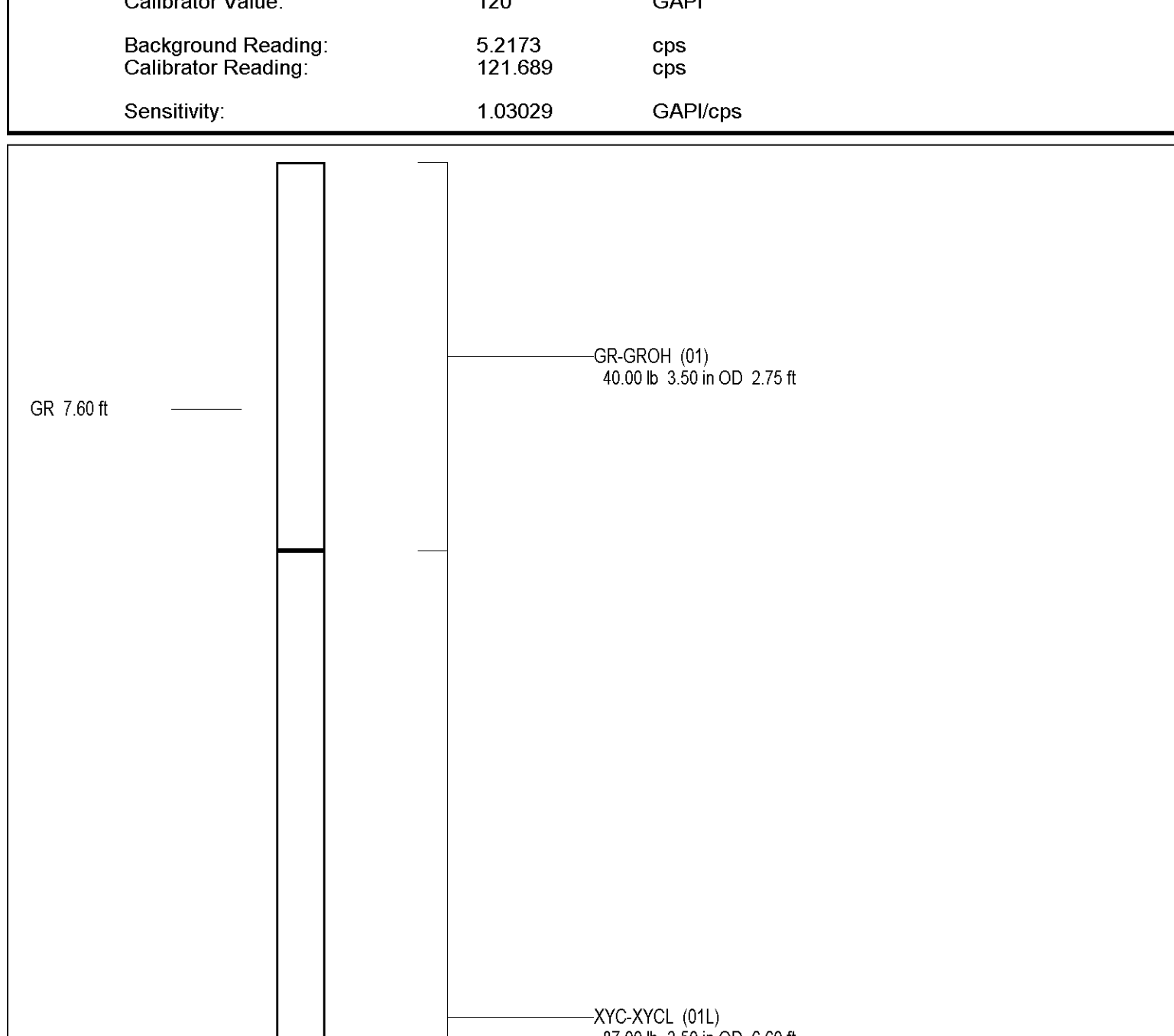
Gamma Ray Calibration Report

Serial Number: 01
Tool Model: GROH
Performed: Thu Jul 10 12:25:18 2003

Calibrator Value: 120 GAPI

Background Reading: 5.2173 cps
Calibrator Reading: 121.689 cps

Sensitivity: 1.03029 GAPI/cps



Dataset: run5/pass3.1
Total Length: 9.35 ft
Total Weight: 127.00 lb
O.D.: 3.50 in

Company: Diversified Drilling Corp.
 Well: EXPM-1
 County: Port Mayaca
 State/Prv: Florida
 Location: Sec. 14 T40S R37E
 FDEP Permit #: 096641-001UC
 SFWMD / CH2M Hill, Inc.
 Elevation: 21'
 Other Services: X/Y/G/R VIDEO
 Date: 6-SEP-7-2003
 Run Number: 13752
 Depth Layer: 13752
 Bottom Logged Interval: 13752
 Top Log Interval: 745'
 Open Hole Size: 7.875"
 Type Fluid: WATER
 Type Fluid Density: see FRT
 Max. Recorded Temp.: SURFACE
 Estimated Cement Top: SURFACE
 Time Well Ready: 09:30:09/03
 Equipment Number: 11100, 916/03
 Equipment Name: F1100
 Recorder: S Miller
 Witnessed By: T Toy (DOC)
 Rechecked By: E Reichwald (SFWMD)
 Run Number: 12257
 Time: 40'
 THREH: 9.815"
 FOUR: 33"
 FIVE: 155"
 SIX: 885'
 SEVEN: 885'
 EIGHT: 885'
 NINE: 885'
 TEN: 885'
 ELEVEN: 885'
 TWELVE: 885'
 THIRTEEN: 885'
 FOURTEEN: 885'
 FIFTEEN: 885'
 SIXTEEN: 885'
 SEVENTEEN: 885'
 EIGHTEEN: 885'
 NINETEEN: 885'
 TWENTY: 885'
 TWENTY-ONE: 885'
 TWENTY-TWO: 885'
 TWENTY-THREE: 885'
 TWENTY-FOUR: 885'
 TWENTY-FIVE: 885'
 TWENTY-SIX: 885'
 TWENTY-SEVEN: 885'
 TWENTY-EIGHT: 885'
 TWENTY-NINE: 885'
 THIRTY: 885'
 THIRTY-ONE: 885'
 THIRTY-TWO: 885'
 THIRTY-THREE: 885'
 THIRTY-FOUR: 885'
 THIRTY-FIVE: 885'
 THIRTY-SIX: 885'
 THIRTY-SEVEN: 885'
 THIRTY-EIGHT: 885'
 THIRTY-NINE: 885'
 FORTY: 885'
 FORTY-ONE: 885'
 FORTY-TWO: 885'
 FORTY-THREE: 885'
 FORTY-FOUR: 885'
 FORTY-FIVE: 885'
 FORTY-SIX: 885'
 FORTY-SEVEN: 885'
 FORTY-EIGHT: 885'
 FORTY-NINE: 885'
 FIFTY: 885'
 FIFTY-ONE: 885'
 FIFTY-TWO: 885'
 FIFTY-THREE: 885'
 FIFTY-FOUR: 885'
 FIFTY-FIVE: 885'
 FIFTY-SIX: 885'
 FIFTY-SEVEN: 885'
 FIFTY-EIGHT: 885'
 FIFTY-NINE: 885'
 SIXTY: 885'
 SIXTY-ONE: 885'
 SIXTY-TWO: 885'
 SIXTY-THREE: 885'
 SIXTY-FOUR: 885'
 SIXTY-FIVE: 885'
 SIXTY-SIX: 885'
 SIXTY-SEVEN: 885'
 SIXTY-EIGHT: 885'
 SIXTY-NINE: 885'
 SEVENTY: 885'
 SEVENTY-ONE: 885'
 SEVENTY-TWO: 885'
 SEVENTY-THREE: 885'
 SEVENTY-FOUR: 885'
 SEVENTY-FIVE: 885'
 SEVENTY-SIX: 885'
 SEVENTY-SEVEN: 885'
 SEVENTY-EIGHT: 885'
 SEVENTY-NINE: 885'
 EIGHTY: 885'
 EIGHTY-ONE: 885'
 EIGHTY-TWO: 885'
 EIGHTY-THREE: 885'
 EIGHTY-FOUR: 885'
 EIGHTY-FIVE: 885'
 EIGHTY-SIX: 885'
 EIGHTY-SEVEN: 885'
 EIGHTY-EIGHT: 885'
 EIGHTY-NINE: 885'
 NINETY: 885'
 NINETY-ONE: 885'
 NINETY-TWO: 885'
 NINETY-THREE: 885'
 NINETY-FOUR: 885'
 NINETY-FIVE: 885'
 NINETY-SIX: 885'
 NINETY-SEVEN: 885'
 NINETY-EIGHT: 885'
 HUNDRED: 885'

Company	Diversified Drilling Corp.
Well	EXPM-1
County	Port Mayaca
State/Prv	Florida
Location	Sec. 14 T40S R37E
FDEP Permit #	096641-001UC
SFWMD / CH2M Hill, Inc.	
Elevation	21'
Other Services	X/Y/G/R VIDEO
Date	6-SEP-7-2003
Run Number	13752
Depth Layer	13752
Bottom Logged Interval	13752
Top Log Interval	745'
Open Hole Size	7.875"
Type Fluid	WATER
Type Fluid Density	see FRT
Max. Recorded Temp.	SURFACE
Estimated Cement Top	SURFACE
Time Well Ready	09:30:09/03
Equipment Number	11100, 916/03
Equipment Name	F1100
Recorder	S Miller
Witnessed By	T Toy (DOC)
Rechecked By	E Reichwald (SFWMD)
Run Number	12257
Time	40'
THREH	9.815"
FOUR	33"
FIVE	155"
SIX	885'
SEVEN	885'
EIGHT	885'
NINE	885'
TEN	885'
ELEVEN	885'
TWELVE	885'
THIRTEEN	885'
FOURTEEN	885'
FIFTEEN	885'
SIXTEEN	885'
SEVENTEEN	885'
EIGHTEEN	885'
NINETEEN	885'
TWENTY	885'
TWENTY-ONE	885'
TWENTY-TWO	885'
TWENTY-THREE	885'
TWENTY-FOUR	885'
TWENTY-FIVE	885'
TWENTY-SIX	885'
TWENTY-SEVEN	885'
TWENTY-EIGHT	885'
TWENTY-NINE	885'
FORTY	885'
FORTY-ONE	885'
FORTY-TWO	885'
FORTY-THREE	885'
FORTY-FOUR	885'
FORTY-FIVE	885'
FORTY-SIX	885'
FORTY-SEVEN	885'
FORTY-EIGHT	885'
FORTY-NINE	885'
FIFTY	885'
FIFTY-ONE	885'
FIFTY-TWO	885'
FIFTY-THREE	885'
FIFTY-FOUR	885'
FIFTY-FIVE	885'
FIFTY-SIX	885'
FIFTY-SEVEN	885'
FIFTY-EIGHT	885'
FIFTY-NINE	885'
SIXTY	885'
SIXTY-ONE	885'
SIXTY-TWO	885'
SIXTY-THREE	885'
SIXTY-FOUR	885'
SIXTY-FIVE	885'
SIXTY-SIX	885'
SIXTY-SEVEN	885'
SIXTY-EIGHT	885'
SIXTY-NINE	885'
SEVENTY	885'
SEVENTY-ONE	885'
SEVENTY-TWO	885'
SEVENTY-THREE	885'
SEVENTY-FOUR	885'
SEVENTY-FIVE	885'
SEVENTY-SIX	885'
SEVENTY-SEVEN	885'
SEVENTY-EIGHT	885'
SEVENTY-NINE	885'
EIGHTY	885'
EIGHTY-ONE	885'
EIGHTY-TWO	885'
EIGHTY-THREE	885'
EIGHTY-FOUR	885'
EIGHTY-FIVE	885'
EIGHTY-SIX	885'
EIGHTY-SEVEN	885'
EIGHTY-EIGHT	885'
EIGHTY-NINE	885'
NINETY	885'
NINETY-ONE	885'
NINETY-TWO	885'
NINETY-THREE	885'
NINETY-FOUR	885'
NINETY-FIVE	885'
NINETY-SIX	885'
NINETY-SEVEN	885'
NINETY-EIGHT	885'
HUNDRED	885'

<<< Fold Here >>>

All Interpretations are opinions based on inferences from electrical or other measurements and we cannot and do not guarantee the accuracy or correctness of any interpretation, and we shall not, except in the case of gross or willful negligence on our part, be liable or responsible for any loss, costs, damages, or expenses incurred or sustained by anyone resulting from any interpretation made by any of our officers, agents or employees. These interpretations are also subject to our general terms and conditions set out in our current Price Schedule.

Comments

STATIC and DYNAMIC UP passes were performed.
 Rw=3.752 ohm-m @ 82.2 degF (Dynamic Sample). Est'd Q=2400 gpm.
 FLUID RESISTIVITY CALIBRATION REPORT (Performed: 28-AUG-03 13:30)
 OHM-M CPS
 1.438 2456.77
 2.931 2981.28
 4.829 3565.22

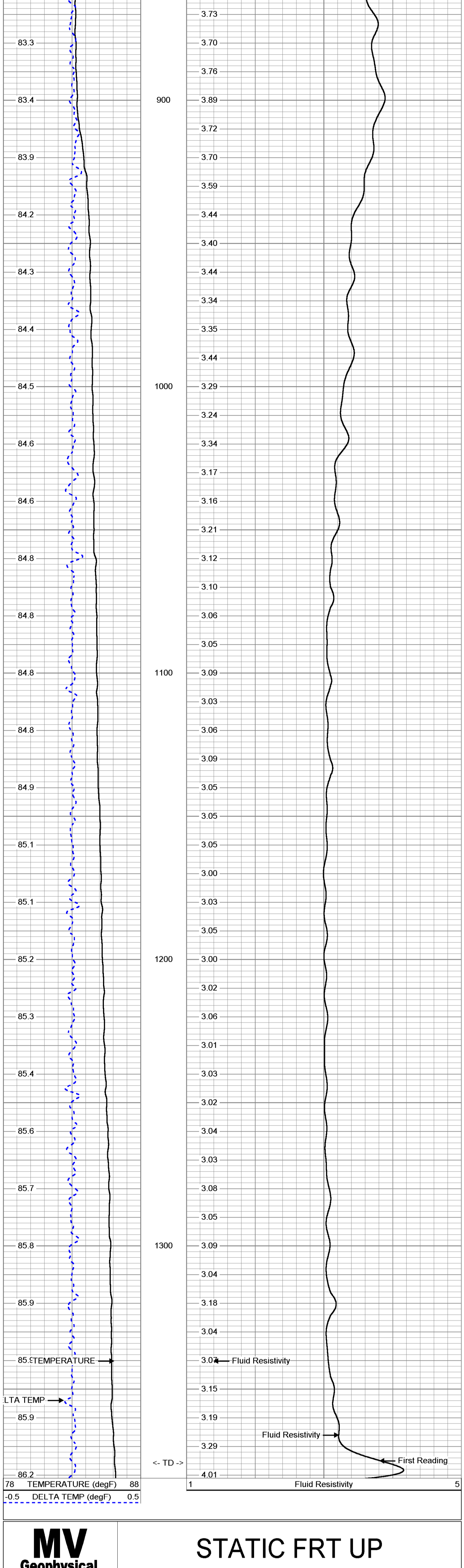
TEMPERATURE CALIBRATION REPORT (Performed: 28-AUG-03 12:45)
 DEG-F CPS
 35.8 2332.38
 141.6 7001.08

MV Geophysical

DYNAMIC FRT UP

Database File: willypm1.db
 Dataset Pathname: run7/DFRT
 Presentation Format: FRTPTM
 Dataset Creation: Sat Sep 06 13:06:01 2003
 Charted by: Depth in Feet scaled 1.240

78 TEMPERATURE (degF)	88	1	Fluid Resistivity	5
-0.5 DELTA TEMP (degF)	0.5			

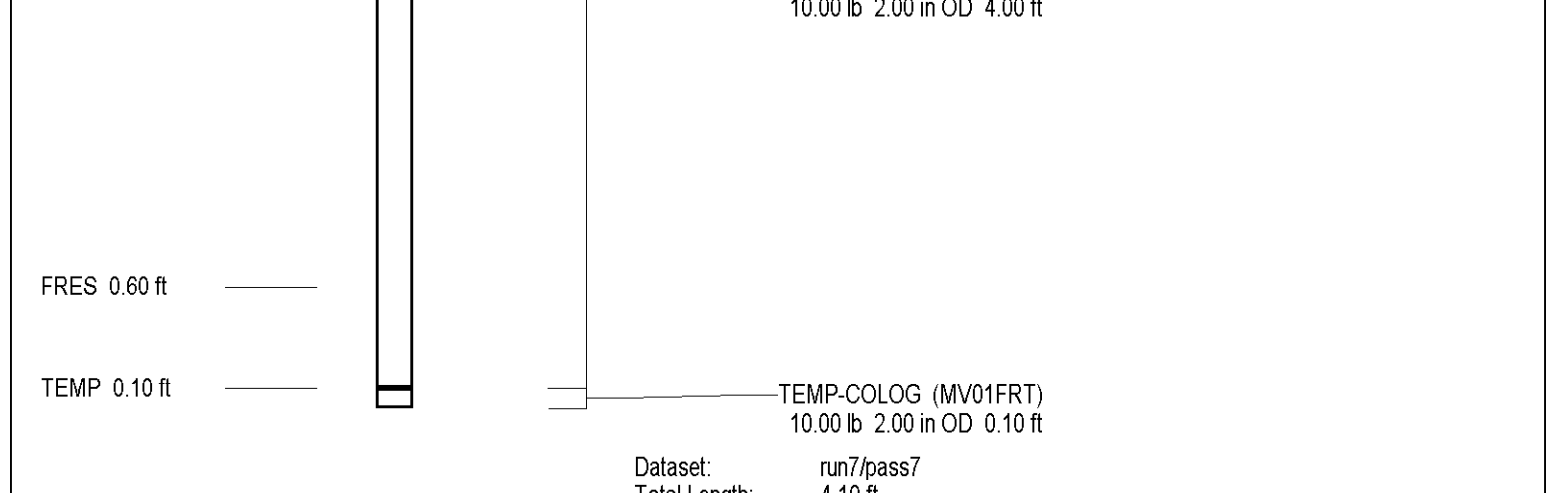
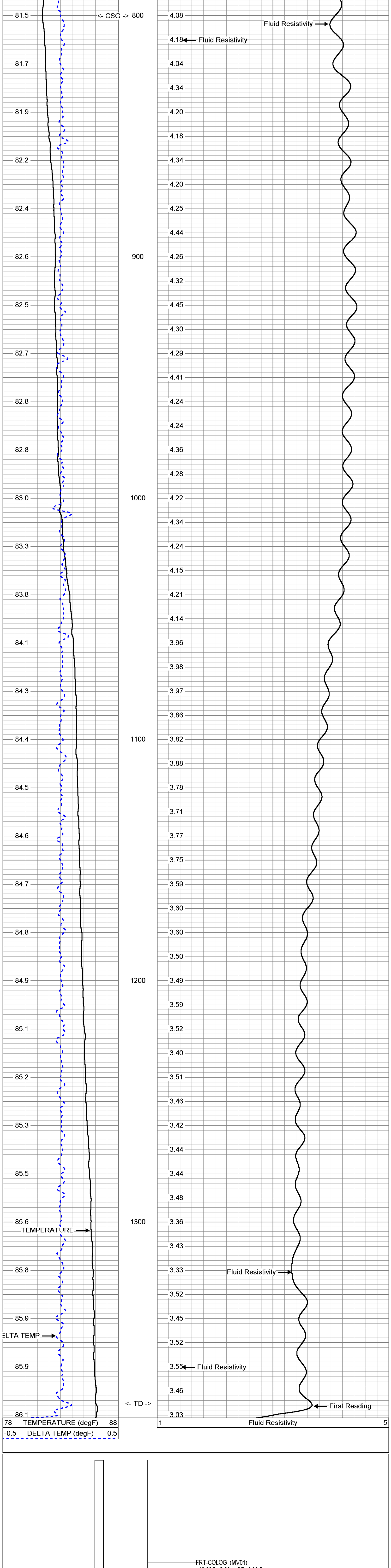


MV Geophysical

STATIC FRT UP

Database File: willypm1.db
 Dataset Pathname: run7/SFRT
 Presentation Format: FRTPTM
 Dataset Creation: Sat Sep 06 12:41:31 2003
 Charted by: Depth in Feet scaled 1.240

78 TEMPERATURE (degF)	88	1	Fluid Resistivity	5
-0.5 DELTA TEMP (degF)	0.5			



Company	Diversified Drilling Corp.	Well	EXP-1
Field	Port Mayaca	Location	Sec. 14 T40S R37E
State/Prv	Florida	FDEP Permit #	096641-001UC
County	Martin	Log Measured From	SEWARD / CH2M Hill, Inc.
County	Martin	Drilling Measured From	G.L.
State/Prv	Florida	Permanent Datum	G.L.
Other Services		Elevation	21'
X/Y/G/R		K.B. 31'	
FRT		D.T. 30'	
VIDEO		G.L. 21'	
Date	11-NOV-2003	Run Number	11097
Depth Drier	1050'	Bottom Logger	1030'
Bottom Logged Interval	1030'	Top Log Interval	22'
Top Log Interval	22'	Flowmeter Size	WATER
Flowmeter Size	WATER	Density / Viscosity	NANNA
Type Fluid	NANNA	Max. Recorded Temp.	84.4 degF
Density / Viscosity	NANNA	Estimated Cement Top	SURFACE
Max. Recorded Temp.	84.4 degF	Time Well Ready	16:00 11/11/03
Estimated Cement Top	SURFACE	Time Logger on Bottom	16:00 11/11/03
Time Well Ready	16:00 11/11/03	Equipment Number	AWGS-1
Time Logger on Bottom	16:00 11/11/03	Location	Ft Myers
Equipment Number	AWGS-1	Recorded By	S Miller / C Miller
Location	Ft Myers	Witnessed By	T. Toy (DDC)
Recorded By	S Miller / C Miller	Beathole Record	
Witnessed By	T. Toy (DDC)	Run Number	11097
Beathole Record		ONE	12.25'
Run Number	11097	TWO	3.1'
ONE	12.25'	THREE	9.875'
TWO	3.1'	FOUR	33'
THREE	9.875'	Casing Record	
FOUR	33'	Surface String	42'
Casing Record		Pod String	34'
Surface String	42'	Production String	10.25-2'
Pod String	34'	Lineer	2003238
Production String	10.25-2'	Job No.	2082
Lineer	2003238	P.O. #	
Job No.	2082	FINAL PRINT	

<<< Fold Here >>>

All interpretations are opinions based on inferences from electrical or other measurements and we cannot and do not guarantee the accuracy or correctness of any interpretation, and we shall not, except in the case of gross or willful negligence on our part, be liable or responsible for any loss, costs, damages, or expenses incurred or sustained by anyone resulting from any interpretation made by any of our officers, agents or employees. These interpretations are also subject to our general terms and conditions set out in our current Price Schedule.

Comments

STATIC and DYNAMIC down passes were made at 50 fpm.

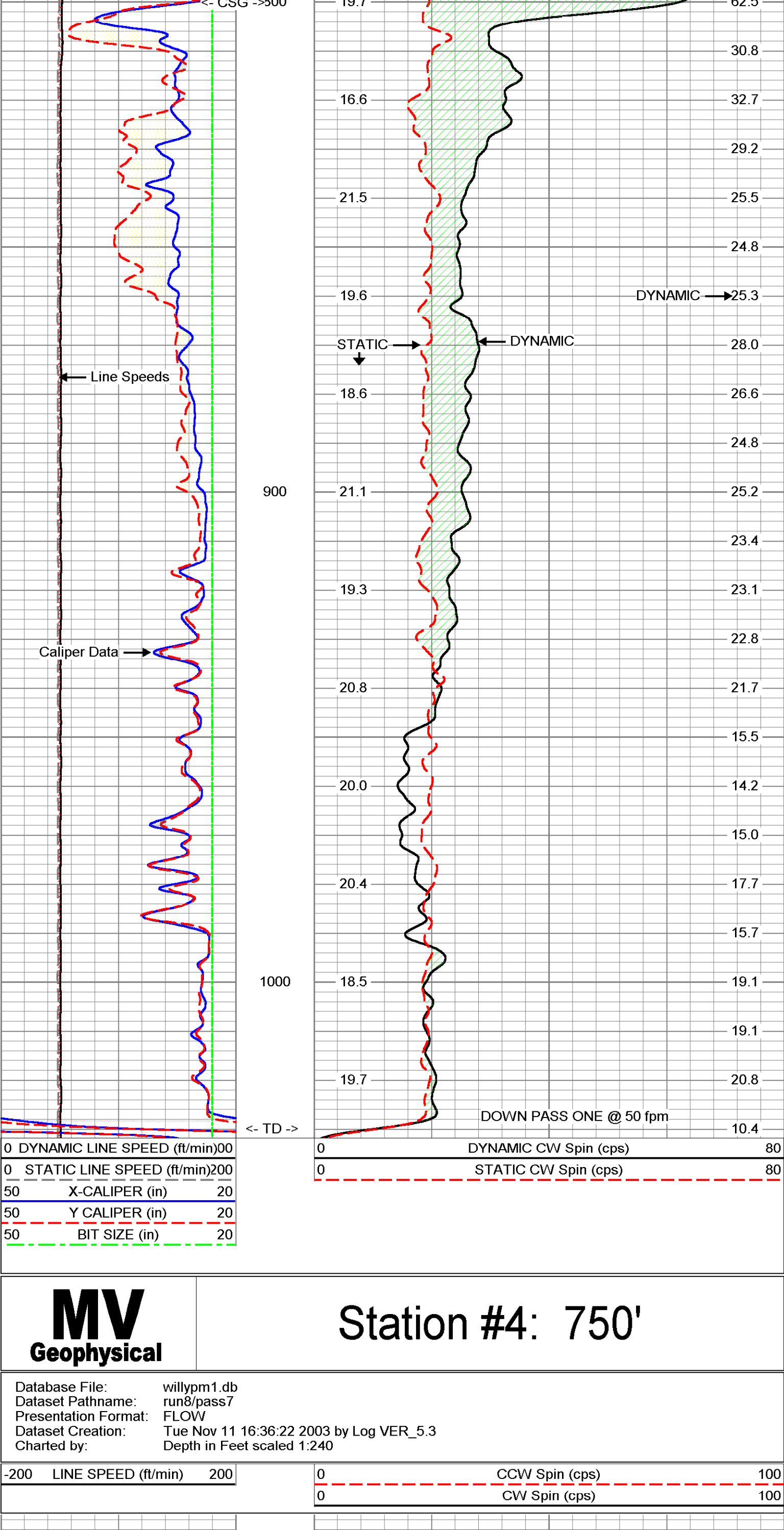
4 stationary data points were logged.

Est'd Q=2,200 gpm.

MV Geophysical S/D DOWN @ 50 fpm

Database File: willypm1.db
 Dataset Pathname: run8/SD50
 Presentation Format: OPTM2
 Dataset Creation: Tue Nov 11 17:21:25 2003
 Charted by: Depth in Feet scaled 1:240

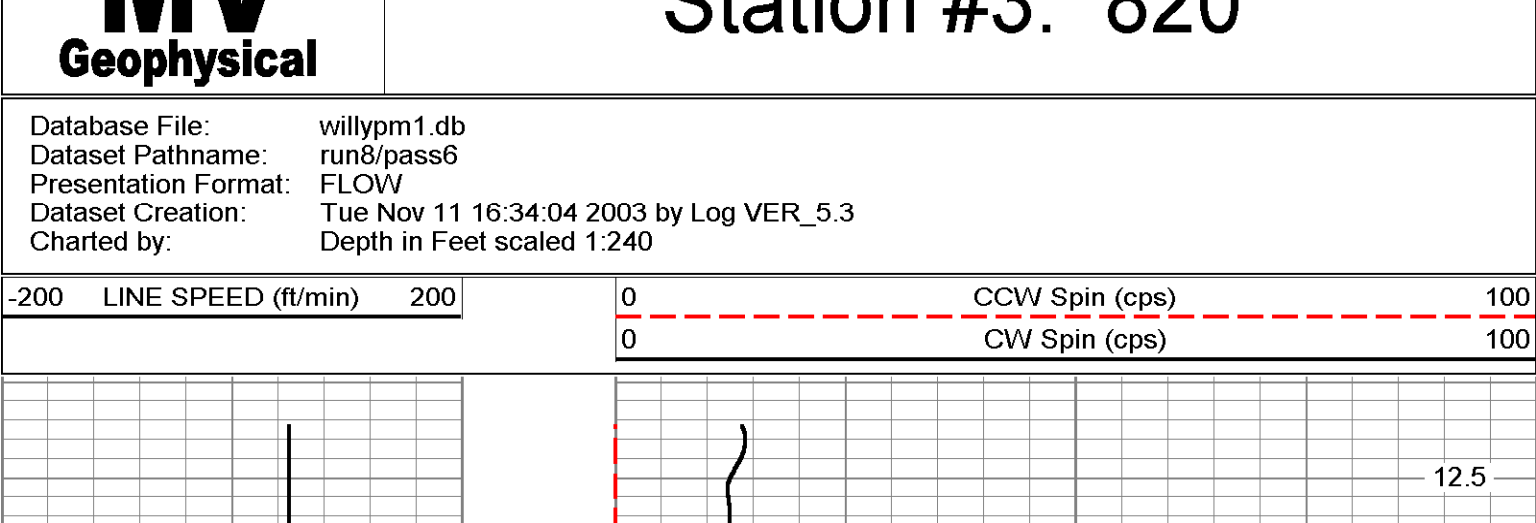
0 DYNAMIC LINE SPEED (ft/min)00	0	DYNAMIC CW Spin (cps)	80
0 STATIC LINE SPEED (ft/min)200	0	STATIC CW Spin (cps)	80
50 X-CALIPER (in)	20		
50 Y-CALIPER (in)	20		
50 BIT SIZE (in)	20		



MV Geophysical Station #4: 750'

Database File: willypm1.db
 Dataset Pathname: run8/pass7
 Presentation Format: FLOWV
 Dataset Creation: Tue Nov 11 16:36:22 2003 by Log VER_5.3
 Charted by: Depth in Feet scaled 1:240

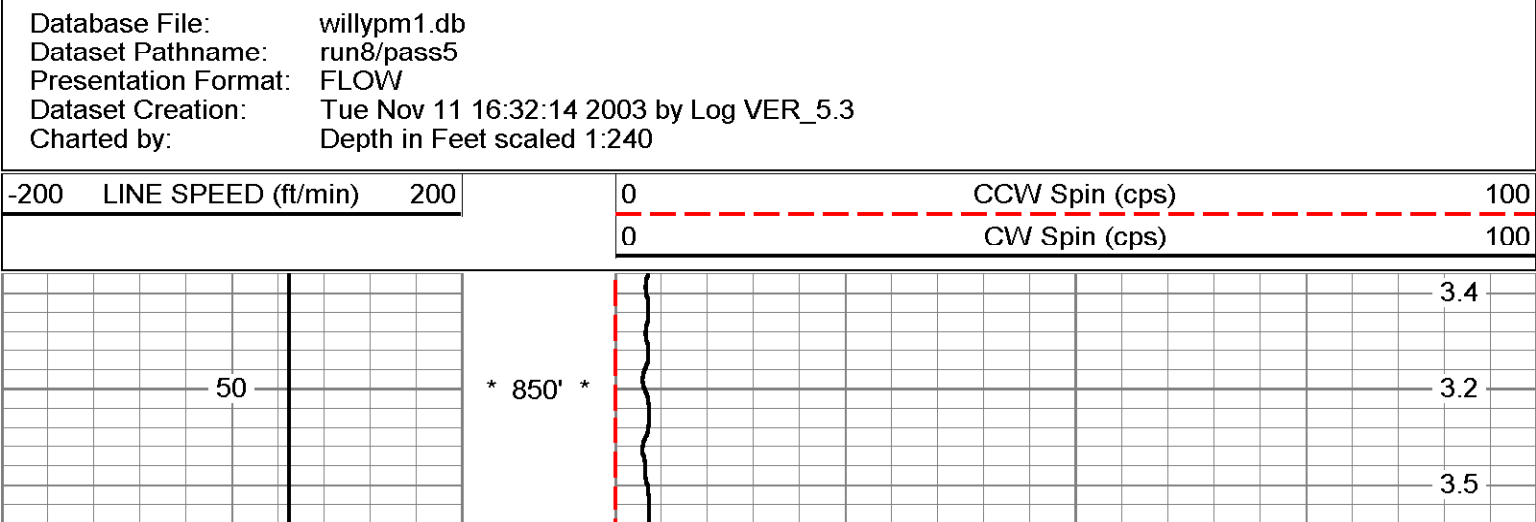
-200 LINE SPEED (ft/min) 200	0	CCW Spin (cps)	100
	0	CW Spin (cps)	100



MV Geophysical Station #3: 820'

Database File: willypm1.db
 Dataset Pathname: run8/pass6
 Presentation Format: FLOWV
 Dataset Creation: Tue Nov 11 16:34:04 2003 by Log VER_5.3
 Charted by: Depth in Feet scaled 1:240

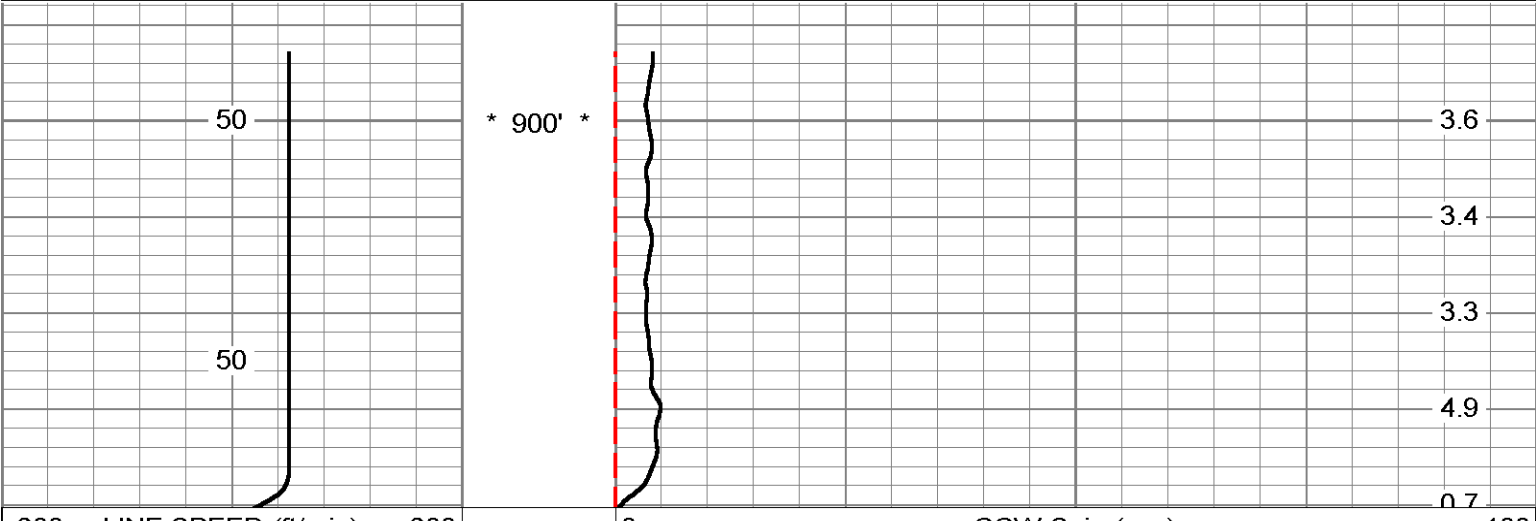
-200 LINE SPEED (ft/min) 200	0	CCW Spin (cps)	100
	0	CW Spin (cps)	100



MV Geophysical Station #2: 850'

Database File: willypm1.db
 Dataset Pathname: run8/pass5
 Presentation Format: FLOWV
 Dataset Creation: Tue Nov 11 16:32:14 2003 by Log VER_5.3
 Charted by: Depth in Feet scaled 1:240

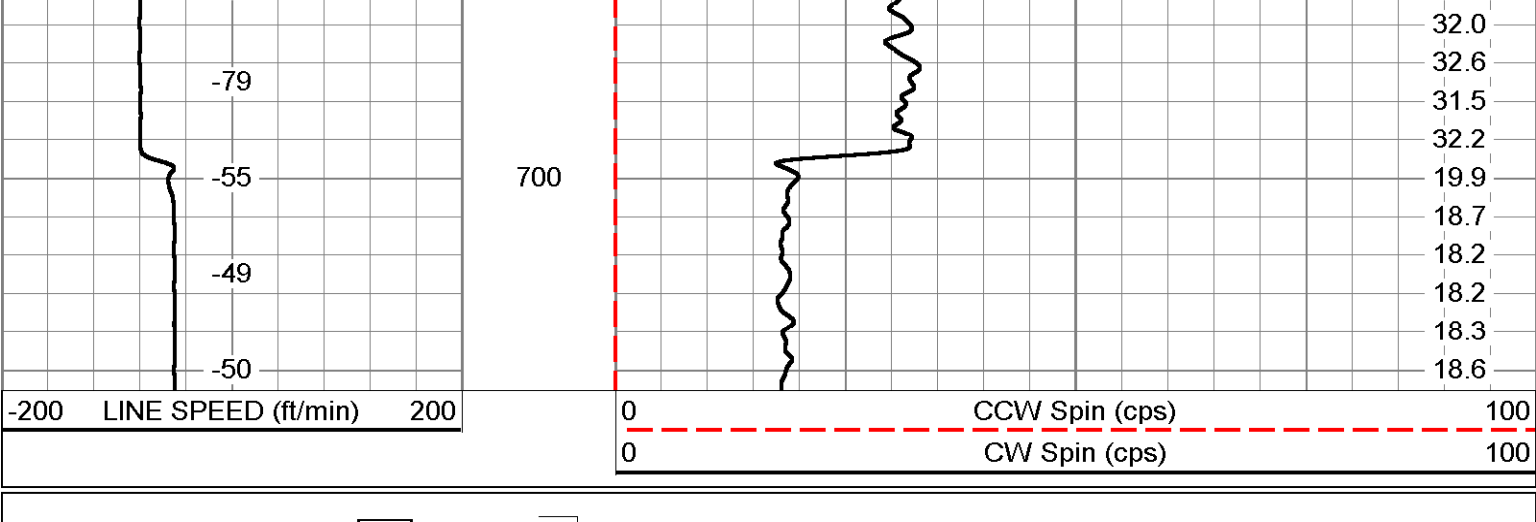
-200 LINE SPEED (ft/min) 200	0	CCW Spin (cps)	100
	0	CW Spin (cps)	100



MV Geophysical Station #1: 900'

Database File: willypm1.db
 Dataset Pathname: run8/pass4
 Presentation Format: FLOWV
 Dataset Creation: Tue Nov 11 16:30:08 2003 by Log VER_5.3
 Charted by: Depth in Feet scaled 1:240

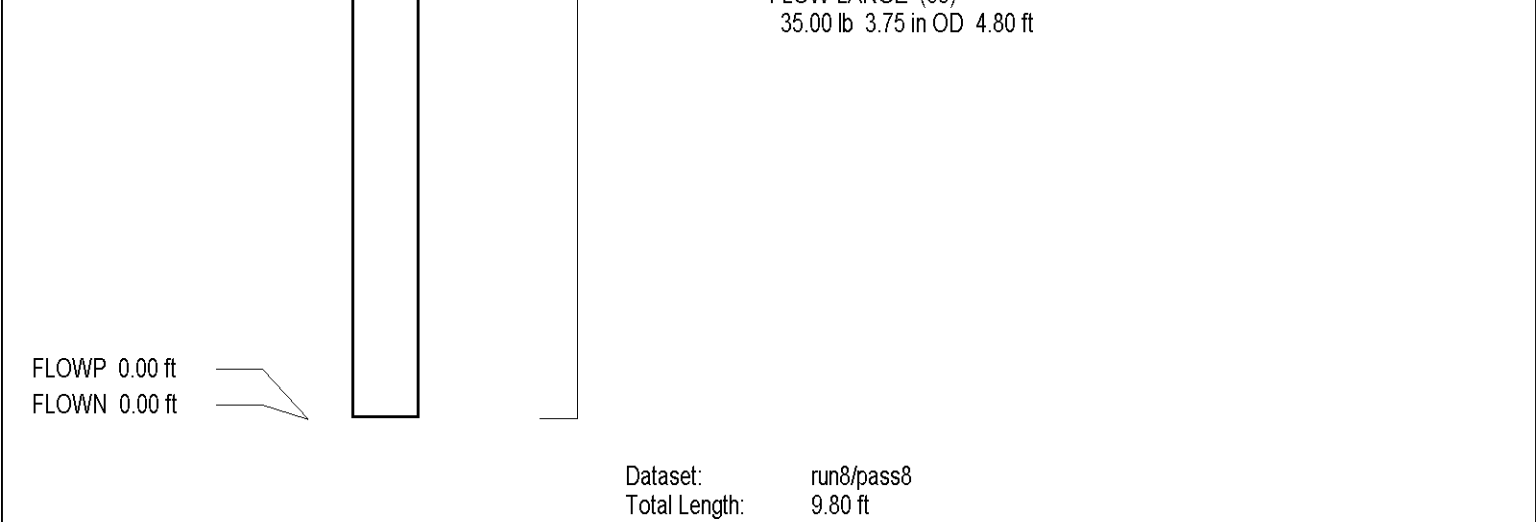
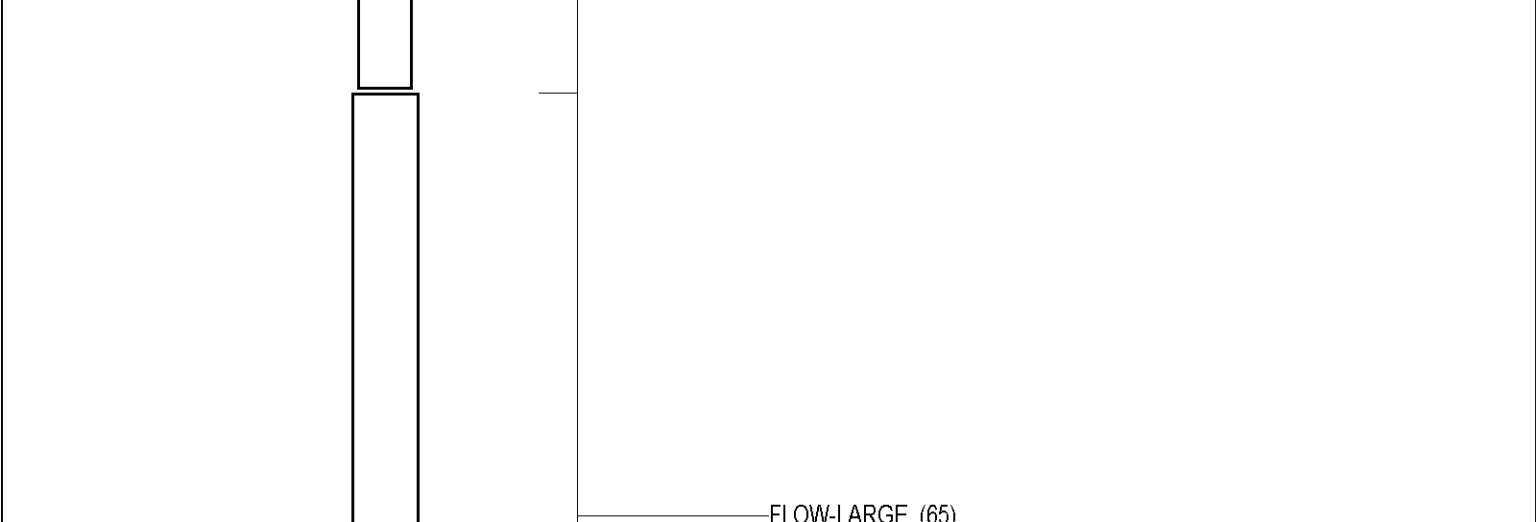
-200 LINE SPEED (ft/min) 200	0	CCW Spin (cps)	100
	0	CW Spin (cps)	100



MV Geophysical Q Calibration Down

Database File: willypm1.db
 Dataset Pathname: run8/pass8
 Presentation Format: FLOWV
 Dataset Creation: Tue Nov 11 16:38:51 2003 by Log VER_5.3
 Charted by: Depth in Feet scaled 1:600

-200 LINE SPEED (ft/min) 200	0	CCW Spin (cps)	100
	0	CW Spin (cps)	100





FLUID RESISTIVITY TEMPERATURE LOG

Company: Diversified Drilling Corp.		Company: Diversified Drilling Corporation	
Well: EXPM-1	Field: Port Mayaca	Well: EXPM-1	Field: Port Mayaca
County: Martin	State/Prv: Florida	County: Martin	State/Prv: Florida
Location: Sec. 14 T40S R37E FDEP Permit #: 096641-001UC SFWMD / CH2M Hill, Inc.		Other Services: XYGR FLOW VIDEO	
Date: 11-NOV-2003	Elevation: 21'	Permanent Datum: G.L.	Elevation: K.B. 31'
Run Number: 11-NOV-2003	Log Measured From: G.L.	Drilling Measured From: G.L.	D.E.: 30'
Depth Driller: 1060'	Depth Logger: 1030'		G.L.: 21'
Bottom Logged Interval: 1030'	Top Log Interval: 745'		
Open Hole Size: 2.3"	WATER		
Type Fluid: WATER	Density / Viscosity: N/A/N/A		
Max. Recorded Temp.: 84.5 degF	Estimated Cement Top: SURFACE		
Time Well Ready: 14:30 11/11/03	ROA 11/11/03		
Equipment Number: M/GS-1	Time Well Ready: 14:30 11/11/03		
Recorded By: S.Miller / C.Miller	Recorded By: S.Miller / C.Miller		
Witnessed By: T.Toy (DDO)	Witnessed By: T.Toy (DDO)		

<<< Fold Here >>>

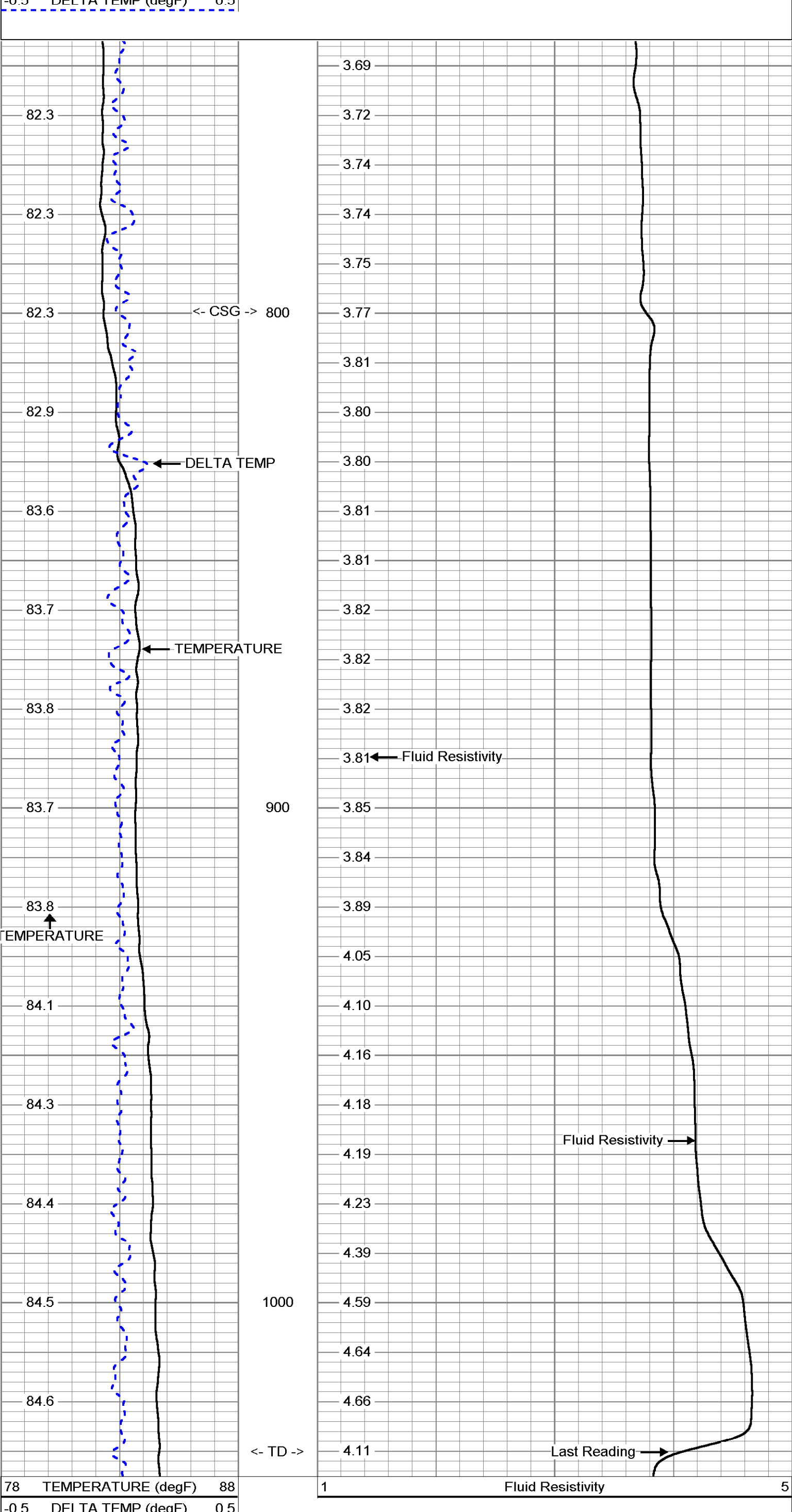
All interpretations are opinions based on inferences from electrical or other measurements and we cannot and do not guarantee the accuracy or correctness of any interpretation, and we shall not, except in the case of gross or willful negligence on our part, be liable or responsible for any loss, costs, damages, or expenses incurred or sustained by anyone resulting from any interpretation made by any of our officers, agents or employees. These interpretations are also subject to our general terms and conditions set out in our current Price Schedule.

Comments

STATIC and DYNAMIC DOWN passes were performed.
 Rw=3.704 ohm-m @ 82.4 degF (Dynamic Sample). Est'd Q=2200 gpm.
 FLUID RESISTIVITY CALIBRATION REPORT (Performed: 9-NOV-03 11:30)
 OHM-M CPS
 1.458 2460.12
 2.955 2986.11
 4.892 3575.72
 TEMPERATURE CALIBRATION REPORT (Performed: 9-NOV-03 11:45)
 DEG-F CPS
 34.2 2329.89
 145.5 7021.28

DYNAMIC FRT DOWN

Database File: willypm1.db
 Dataset Pathname: run8/dfrt
 Presentation Format: FRTPTM
 Dataset Creation: Tue Nov 11 15:19:37 2003
 Charted by: Depth in Feet scaled 1:240



STATIC FRT UP

Database File: willypm1.db
 Dataset Pathname: run8/sftrt
 Presentation Format: FRTPTM
 Dataset Creation: Tue Nov 11 15:22:58 2003
 Charted by: Depth in Feet scaled 1:240

