



## **SURVEYOR'S REPORT**

**Specific Purpose Survey of the  
United States Geological Survey  
Recorder Well G-3608  
in  
Miami-Dade County, Florida**

**Prepared for:**

### **South Florida Water Management District**

3301 Gun—Club Road  
West Palm Beach, Florida 33406  
Ph. (561) 686-8800 (ext. 2978)  
Fax (561) 682-0066

**Prepared by:**

**Mike Bartholomew, PSM, President**  
Florida Professional Surveyor and Mapper  
License Number 5666  
State of Florida

Biscayne Engineering Company, Inc. LB No 0129  
529 West Flagler Street, Miami, FL. 33130  
Tel (305) 324-7671

Field Date: March 18, 2019  
Report Date: April 18, 2019  
BEC Order #: 03-86445

INSPIRED BEYOND MEASURE • SINCE 1898

**CORPORATE  
HEADQUARTERS**  
529 West Flagler Street,  
Miami, FL 33130  
Tel. 305.324.7671  
Fax 305.324.0809

[www.BiscayneEngineering.com](http://www.BiscayneEngineering.com)  
[info@BiscayneEngineering.com](mailto:info@BiscayneEngineering.com)

**PALM BEACH  
BRANCH**  
449 NW 35<sup>th</sup> Street,  
Boca Raton, FL 33431  
Tel. 561.603.2329  
Fax 561.609.2317

# TABLE OF CONTENTS

<b>Title</b>	<b>Page</b>
Cover Sheet	1
Table of Contents	2
Purpose	3
Location of Project	3
Surveyor's Report	4
Project Datum's	4
Leveling and GPS Methods	4
Equipment used	4
Vertical Control Points	5 & 6
Benchmarks summary	5 & 6
Field Notes	6
Project Results	7
Surveyor's Notes	9
Surveyor's Certificate	10
SFWMD Site Form	11

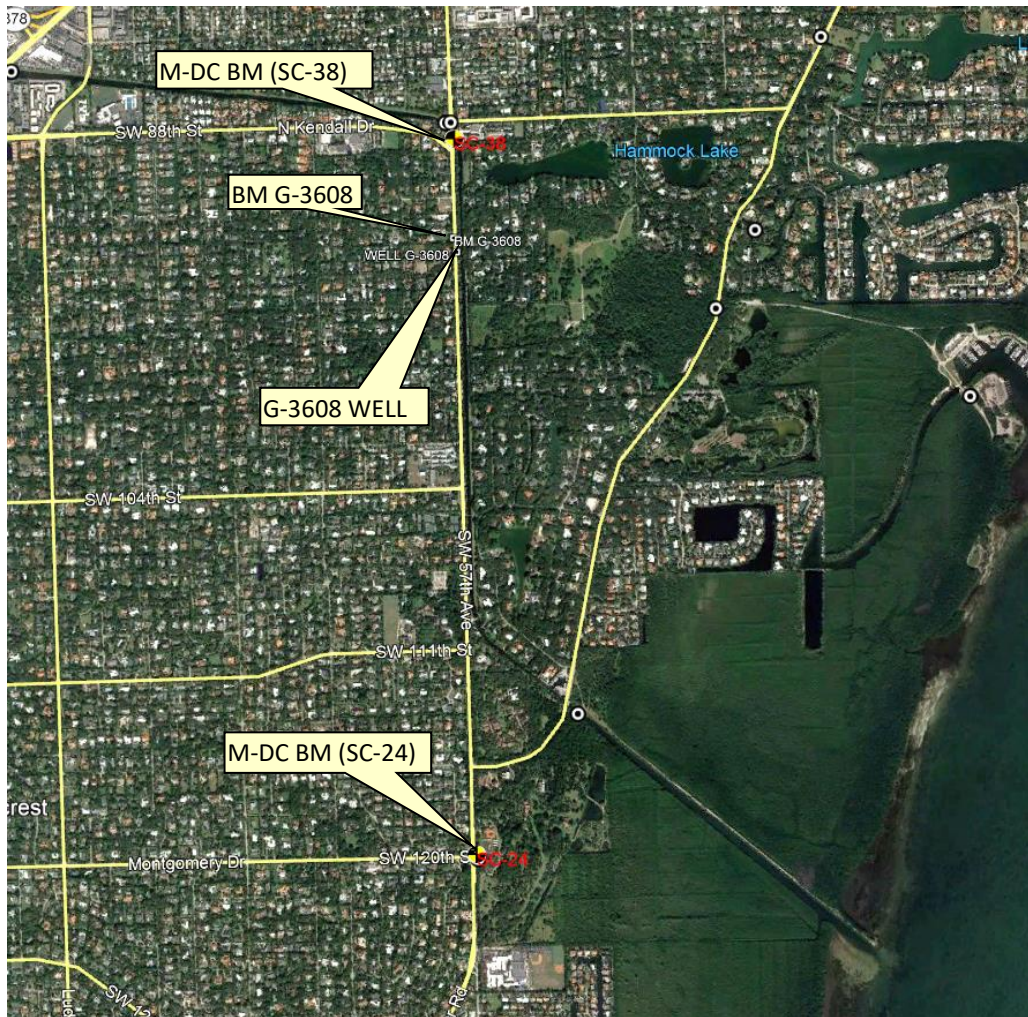
## SURVEYOR'S REPORT

### PURPOSE

The purpose of this survey is to set an Elevation Reference Mark (Benchmark) consisting of a mag nail and washer and to establish a North American Vertical Datum of 1988 (NAVD 88) elevation on said Benchmark and on an additional Reference Point with a Brass plate, both at United States Geological Survey Well **G-3608**.

### LOCATION OF PROJECT

The United States Geological Survey's Recorder Well **G-3608** is located in Section 6, Township 55 South, Range 41 East, Miami-Dade County, Florida.



**General Location (Intended Display scale is "Not to Scale")**

## SURVEYOR'S REPORT

---

### **PROJECT VERTICAL DATUM**

The project vertical datum is the North American Vertical Datum (NAVD) of 1988.

To convert the NAVD 88 elevation to the National Geodetic Vertical Datum of 1929 at station **G-3608 add 1.54'**. These values are based on Corpscon 6.0.1 a US. Army Corps of Engineers Engineering Research and Development Center Topographic Engineering Center Alexandria, Virginia Windows-based program to convert coordinates and elevations between datum's using vertcon05.txt and vertcon05.05 files supplied by the US. Army Corps of Engineers South Atlantic Division, Jacksonville Fl.

### **PROJECT HORIZONTAL DATUM**

The project horizontal datum is the North American Datum 83 (NAD 83(2011)) (EPOCH:2010.0000).

### **LEVELING METHODS**

The leveling for this project was performed in accordance with standard survey practice using conventional third order methods, techniques and equipment.

The allowable error (.05  $\sqrt{\text{miles}}$ ) on this project meets or exceeds third order closures as required by SFWMD for this project per executed SOW for 4600003705-WO04 and discussions with SFWMD.

A level loop was run from the Miami-Dade County Benchmark SC-24, through the well site, and to the Miami-Dade County Benchmark SC-38. The measurements were collected using an Automatic Level and were hand written in Biscayne Engineering Co, Inc. Field Book 2990 pages 37-46, dated March 18, 2019, reduced and adjusted electronically. Additional data was manually recorded in the field book.

### **GPS METHODS**

Latitude and Longitude for Benchmark G-3608 were established by observing a 3-minute session of GPS data on March 18, 2019, using a Trimble R-8-S and The Florida Permanent Reference Network (FPRN). The FPRN network consists of nearly 100 Continuously Operating Reference Stations (CORS) located throughout Florida.


### **EQUIPMENT USED**


- Trimble GPS unit R-8-S, Serial Number 5625R066188.
- TOPCON DL-502 digital level Serial Number 512386 and a folding bar code rod.
- TOPCON Total Station ES 103, Serial Number ZQ000748.
- TOPCON Auto-level ATG3, Serial Number 5F9515.

**SURVEYOR'S REPORT**

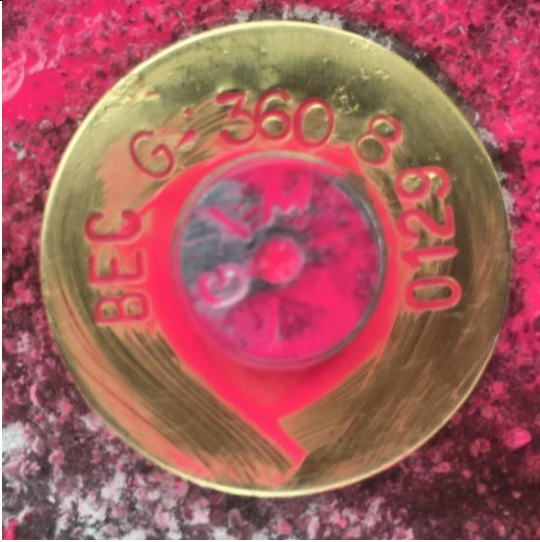
**VERTICAL CONTROL POINT**

The Vertical Control point utilized and set as part of this survey is the:

<b>M-DC BM SC-24</b>			
25° 39' 36.59" (N)	80° 17' 01.44" (W)		14.08 ft. (NAVD88) 4.29 m Published
			15.62 ft. (NGVD29) 4.76 m Published
		<p>THE MARK IS LOCATED: SW 120 ST --- 42.5' NORTH OF C/L SW 57 AVE --- 35' EAST OF C/L 53.5' NE OF SEC CORNER IN INTERSECTION</p> <p>BRASS BAR IN CONC MON.</p>	

<b>M-DC BM SC-38</b>			
25° 41' 20.19" (N)	80° 17' 05.04" (W)		
			10.40 ft. (NGVD29) 3.17 m Published
		<p>THE MARK IS A BRASS BAR IN CONC WHEELGUARD AT SE CORNER OF BRIDGE OVER SNAPPER CREEK</p>	

**SURVEYOR'S REPORT**

<b>BM: G-3608 (Set as part of this survey)</b>					
25° 41' 05.83" (N)	80° 17' 05.07" (W)	9.62ft.	(NAVD88)	2.93 m	Level run
		11.16 ft.	(NGVD29)	3.40 m	Converted
				1.54 ft.	Corpscon 6.0.1
				(conversion factor)	
STATION IS A MAG NAIL AND WASHER STAMPED "BEC 0129 AND G-3608"					
LOCATED: RED ROAD TRAIL --- 15' WEST OF C/L SW 91 <sup>ST</sup> STREET --- 580' SOUTH OF C/L					

Field Book 2990, Page 44

SGT	BS	MEAN	HZ	FS	MEAN	ELEVATION	BM NO.	DESCRIPTION
CP2 (BM-2)	5.84							
BM G-3608	4.81	4.808	14.43			9.62		
	3.75		14.25			9.617		
TP N. 21				4.37				
				3.40				
				2.47				SET CURVE 1/4" ON ASPHALT WALKWAY
SHAKE	4.80	3.86	14.89					1/25" S. OF C/L OF SW 91 ST.
	3.84		14.885					EAST SIDE OF THE SW 91 AV.
TP N. 22				6.905				
				6.135	6.173			SET CURVE 1/4" ON ASPHALT WALKWAY
				5.360				1/25" S. OF THE TP N. 21
SHAKE	4.17	3.275	12.027					
	3.28	3.275	12.027					
TP N. 23				6.365				
				5.390	5.392			
				4.420				SET CURVE 1/4" ON...
SHAKE	7.04	6.027	12.667					
	6.025		12.662					
	5.015							
BM SC-3B (29)				3.360	3.758			
				3.760				
				3.155				
								10.40 NGVD29
								SW 88 ST...
								SW 57 AV...
								BYPASS BAR IN CONC. WHEELWARD AT SE CORNER
								OF BRIDGE OVER SNAPPER CREEK
								EL = 10.40 NAVD88

**BM G-3608  
ELEVATION:  
9.62' (NAVD88)**

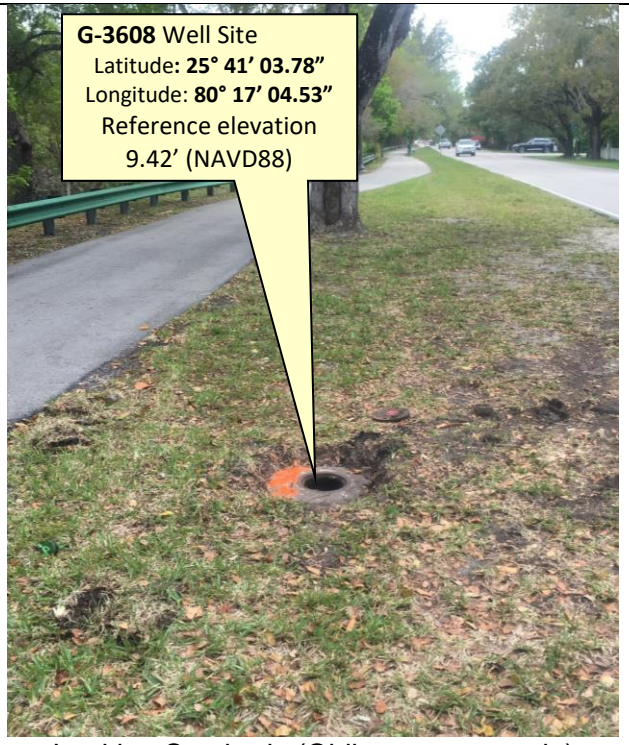
**PROJECT RESULTS**

Overall Site



Benchmark "G-3608"  
El. 9.62' (NAVD88)

Looking West (Oblique not to scale)



G-3608 Well Site  
Latitude: 25° 41' 03.78"  
Longitude: 80° 17' 04.53"  
Reference elevation  
9.42' (NAVD88)

Looking Southerly (Oblique not to scale)

## SURVEYOR'S REPORT


### Tabular Form

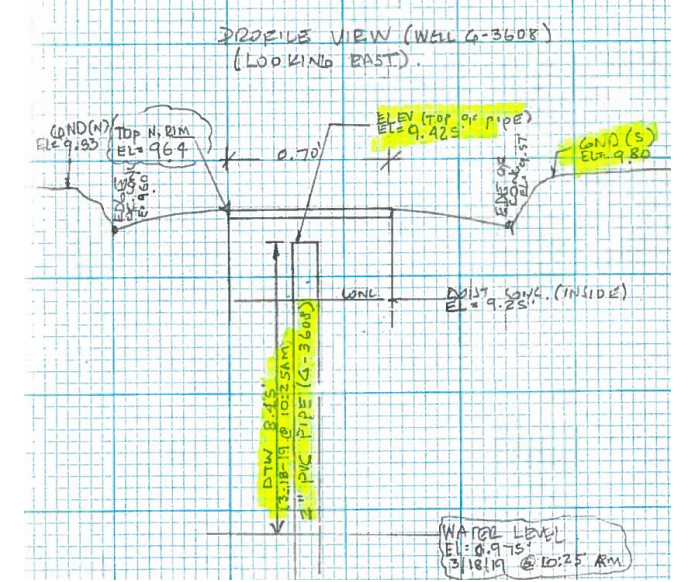
Reference and Ground Elevations: (NAVD88)			
Well	Ground Elevation	Reference Elevation	Comments
G-3608	9.83 ft.	9.42 ft.	Top of 2" PVC PIPE
Offset to NGVD29: +1.54' (See Project Vertical Datum Notes in Page: 4)			
Well diameter		Casing material	DTW
2"		Metal	8.45 ft. (03/18/19 at 10:25 AM)

USGS Published: (Per USGS Report Site #: 254108080170601 G-3608) (NGVD29)			
Well	Ground Elevation	Reference Elevation	Comments
G-3608	-	10.95 ft.	Top of Casing at land surface

Source & Site Benchmark	NAVD88	NGVD29 (Published)	NGVD29 (Corpscon)
SC -24 (M-DC)	14.08 ft. (Published)		15.62 ft.
SC-38 (M-DC)	8.86 ft. (Published)	10.40 ft.	
G-3608 (SFWMD)	9.62 ft. (Measured)		11.16 ft.

### Well Photos and Diagrams

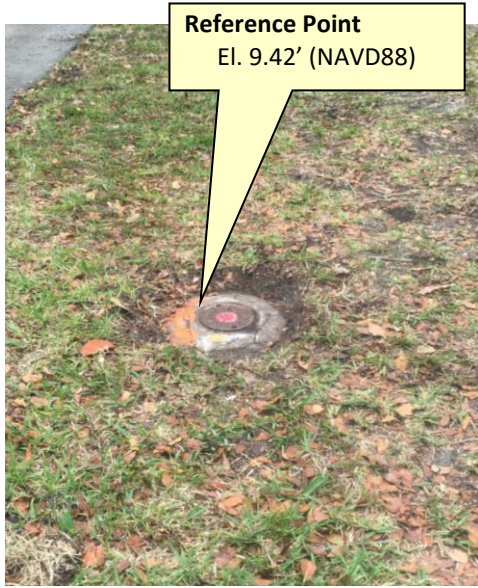






## SURVEYOR'S REPORT

### Well Photos and Diagrams (Continued)



Side view (Oblique Not to scale)



Top view (Not to scale)

### **Surveyor's Notes:**

1. All measurements herein are in United States Survey feet and decimal thereof, unless otherwise specified.
2. Underground utilities were not located as part of this survey.
3. This survey report or copies thereof are not valid without the original signature and seal of a Florida licensed Surveyor and Mapper.
4. Additions or deletions to this survey report by other than the signing party (or parties) is prohibited without written consent of the signing party (or parties).
5. To convert from NAVD 88 to NGVD 29 add 1.54 feet. This value is based on Corpscon 6.0.1 a U.S. Army Corps of Engineers Engineering Research and Development Center Topographic Engineering Center Alexandria, Virginia Windows-based program to convert coordinates and elevations between datum's using vertcon05.txt and vertcon05.05 files supplied by the U.S. Army Corps of Engineers South Atlantic Division, Jacksonville Fl.
6. Date of last field work: March 18, 2019, BEC job No. 03-86445.
7. SFWMD Data records (on file at the District's headquarters):
  - A. Electronic Data files:
    - Miscellaneous picture files
  - B. Conventional reporting
    - Field Book: 2990 pages 37-46

**SURVEYOR'S REPORT**

---

**Abbreviations:**

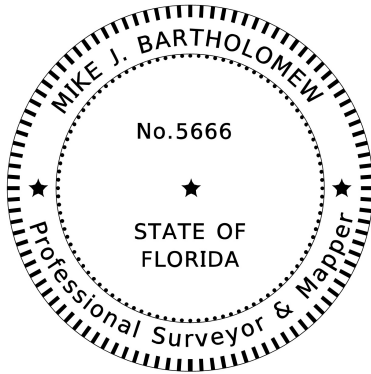
- EI.** - Elevation
- DTW** - Distance to the water table inside the well
- M-DC** - Miami-Dade County
- NAVD88** - North American Vertical Datum of 1988
- NGVD29** - National Geodetic Vertical Datum of 1929
- NGS** - National Geodetic Survey
- PSM** - Professional Surveyor & Mapper
- PID** - Permanent Identifiers
- SFWMD** - South Florida Water Management District
- USGS** - United States Geological Survey
- BEC** - Biscayne Engineering Company, Inc.

**SURVEYOR'S CERTIFICATION**

In my professional opinion this Specific Purpose Survey meets applicable portions of the Standards of Practice set forth by the Florida Board of Professional Surveyors and Mappers in Chapter 5J-17, Florida Administrative Code. This report is prepared for the sole and specific use of the South Florida Water Management District and is not assignable.

---

Last date of Survey  
March 18, 2019



---

Mike Bartholomew, PSM, President  
Florida Professional Surveyor and Mapper  
License Number 5666  
State of Florida  
Biscayne Engineering Company, Inc. LB No 0129  
529 West Flagler Street, Miami, FL. 33130  
Tel (305) 324-7671



# SOUTH FLORIDA WATER MANAGEMENT DISTRICT

Rev. 4/18

DESIGNATION: G-3608		PROJECT: G-3608	
ESTABLISHED BY: SOUTH FLORIDA WATER MANAGEMENT DISTRICT		SURVEYOR: Mike Bartholomew	
RECOVERED BY: BISCAYNE ENGINEERING CO.		DATE: 03/18/19	
<b>GEOGRAPHIC POSITION</b>			
SECTION 1	TOWNSHIP 55 SOUTH	RANGE 40 EAST	
COUNTY: MIAMI-DADE	NAME OF QUADRANGLE: SOUTH MIAMI GEOGRAPHIC INDEX OF QUAD:		
HORIZONTAL DATUM: 1927 <b>(1983)</b> 2022 Other _____ (circle one) ZONE <b>(E)</b> or W			
VERTICAL DATUM: MSL 1929 <b>(1988)</b> 2022 Other _____ (circle one)			
VERTICAL ACCURACY: 1 2 <b>(3)</b>			
STATE PLANE COORDINATE	(N) Y= 491824.66	(E) X= 891720.13	NAVD 88 EL. 9.62' NGVD 29 EL. 11.16'
CORPSCON 6.0.1 CONVERSION FACTOR (NAVD88 TO NGVD29): (A U.S. Army Corps of Engineers Engineering Research and Development Center Topographic Engineering Center Alexandria, Virginia Windows-based program to convert coordinates and elevations between datum's using vertcon05.txt and vertcon05.05 files supplied by the U.S. Army Corps of Engineers South Atlantic Division, Jacksonville FL.) ACTUAL NGS or (ngvd29.txt file) OPUS Ortho Height			
LATITUDE: 25 ° 41' 05.83 " (N)		LONGITUDE: 80° 17' 05.07" (W) (Source) GPS RTK (FPRN)	
<b>RECOVERY DATA</b>			
Stamping: G-3608 BEC 0129			
To Reach: STATION IS A MAG NAIL AND WASHER STAMPED "BEC 0129 AND G-3608"			
LOCATED: RED ROAD TRAIL --- 15' WEST OF C/L, SW 91ST STREET --- 580' SOUTH OF C/L			
NOTABLE LAND MARKS: RED ROAD LINEAR PARK			
MDC-SOURCE BENCHMARKS: SC-24, SC-38			
FIELD BOOK PAGE <u>2990-44</u>			
<b>PICTURES</b>			
Aerial Overall Site			
NOT TO SCALE (Google Earth product)			

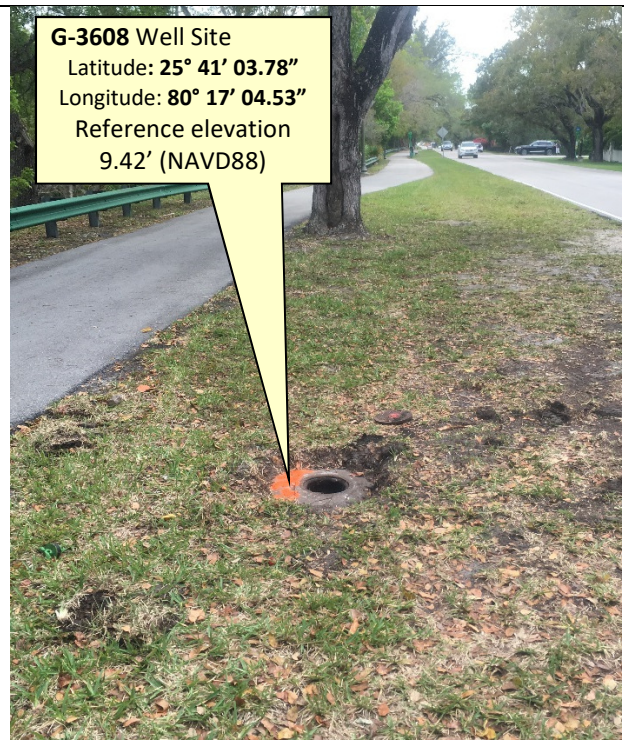


Overall Site



Benchmark "G-3608"  
El. 9.62' (NAVD88)

Looking West (Oblique not to scale)



G-3608 Well Site  
Latitude: 25° 41' 03.78"  
Longitude: 80° 17' 04.53"  
Reference elevation  
9.42' (NAVD88)

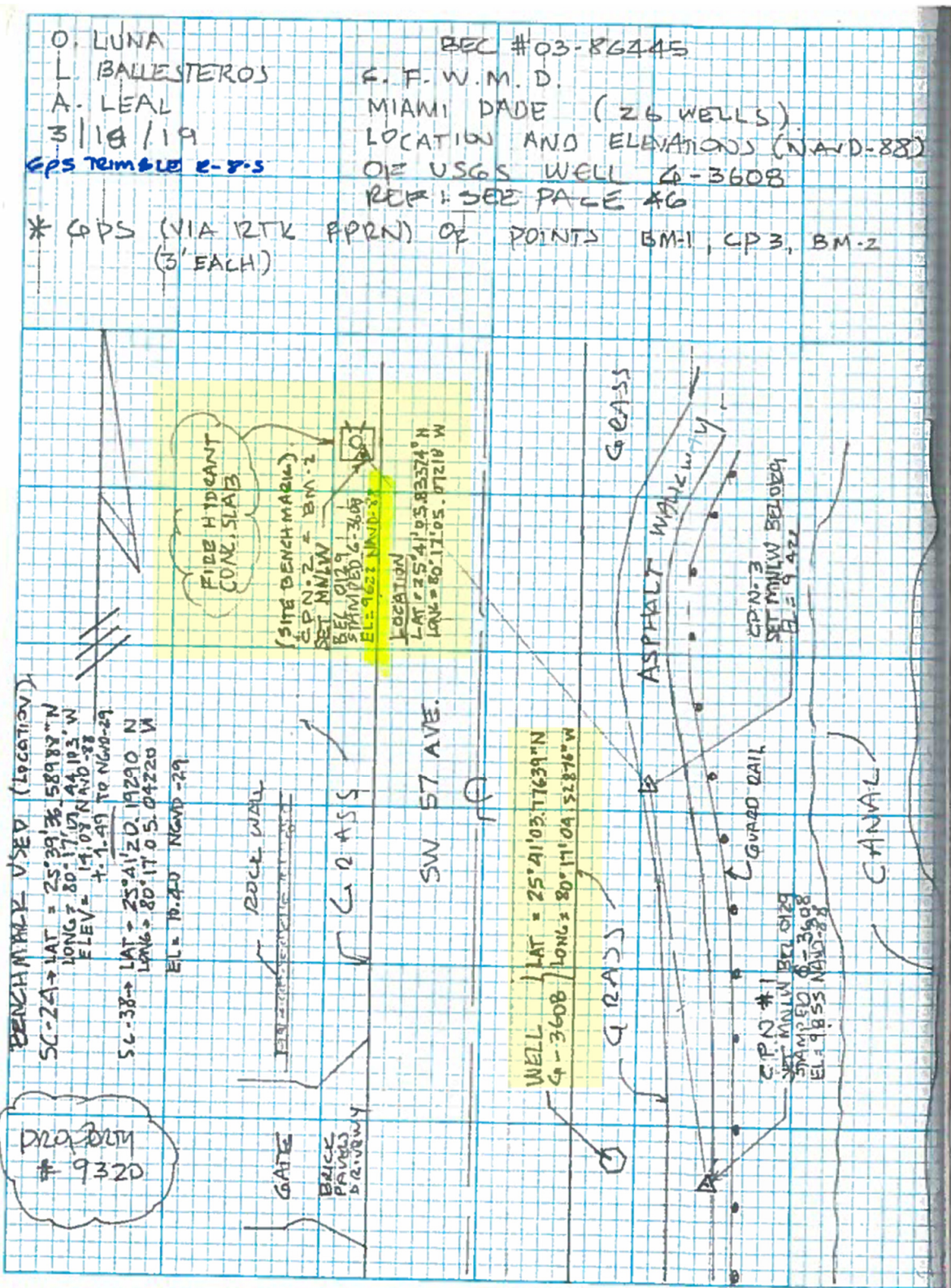
Looking Southerly (Oblique not to scale)



# SOUTH FLORIDA WATER MANAGEMENT DISTRICT

Rev. 4/18

## SKETCH



# Office

## Project

15 May 2019

### INPUT

Geographic, NAD83  
Vertical - NAVD88, U.S. Feet

### OUTPUT

Geographic, NAD83  
Vertical - NGVD29 (Vertcon94), U.S. Feet

---

## BM G-3608

1/1

**Latitude:** 25 41 05.83  
**Longitude:** 80 17 05.07  
**Elevation/Z:** 9.62

**Latitude:** 25 41 05.83000  
**Longitude:** 80 17 05.07000  
**Elevation/Z:** 11.165

---

Remark:

# Office

## Project

15 May 2019

### INPUT

Geographic, NAD83  
Vertical - NAVD88, U.S. Feet

### OUTPUT

Geographic, NAD83  
Vertical - NGVD29 (Vertcon94), U.S. Feet

---

## WELL G-3608

1/1

**Latitude:** 25 41 03.78  
**Longitude:** 80 17 04.53  
**Elevation/Z:** 9.42

**Latitude:** 25 41 03.78000  
**Longitude:** 80 17 04.53000  
**Elevation/Z:** 10.965

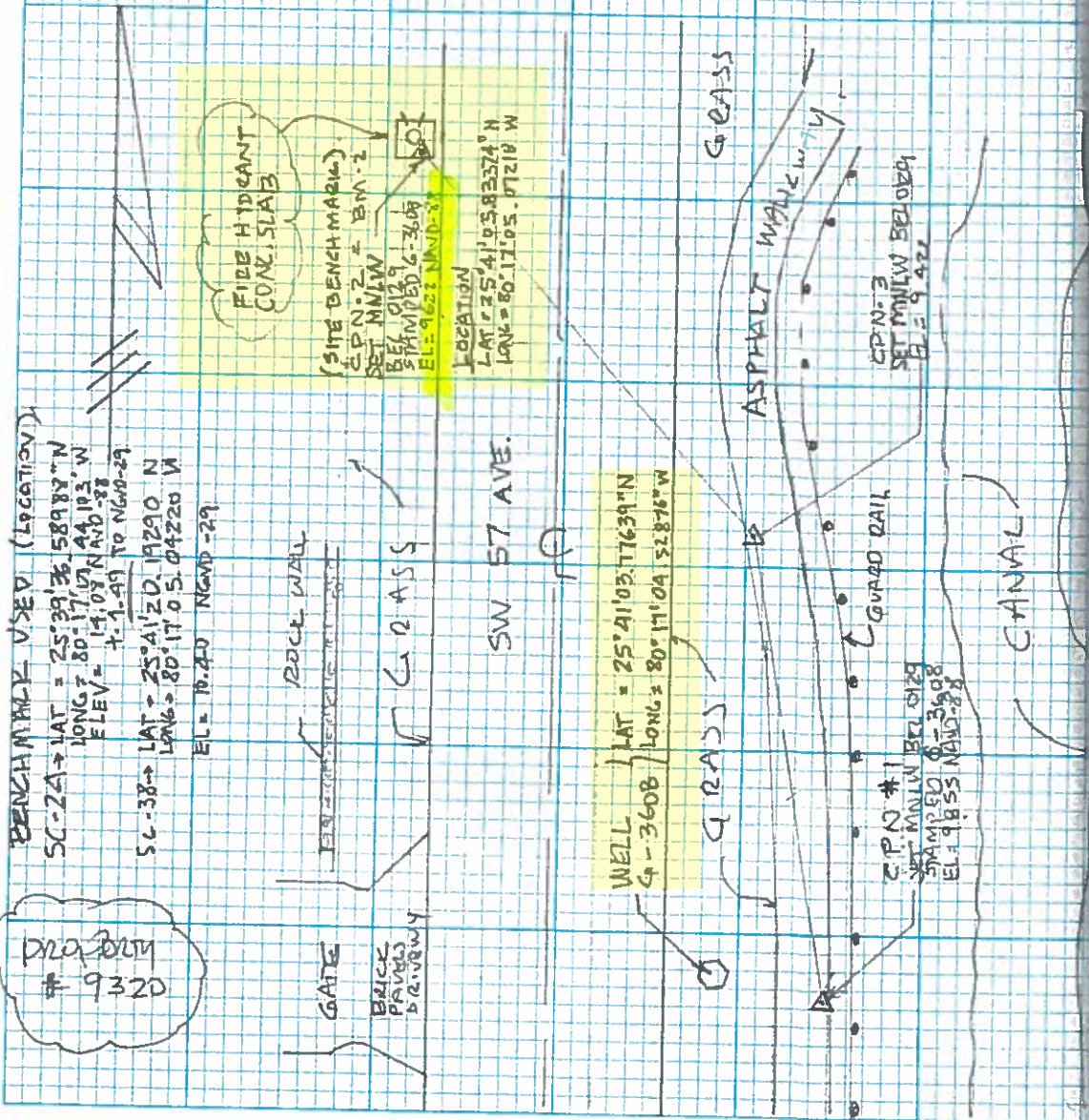
---

Remark:

O. LUNA  
 L. BALLESTEROS  
 A. LEAL  
 3/18/19  
 GPS Trimble R-8-S

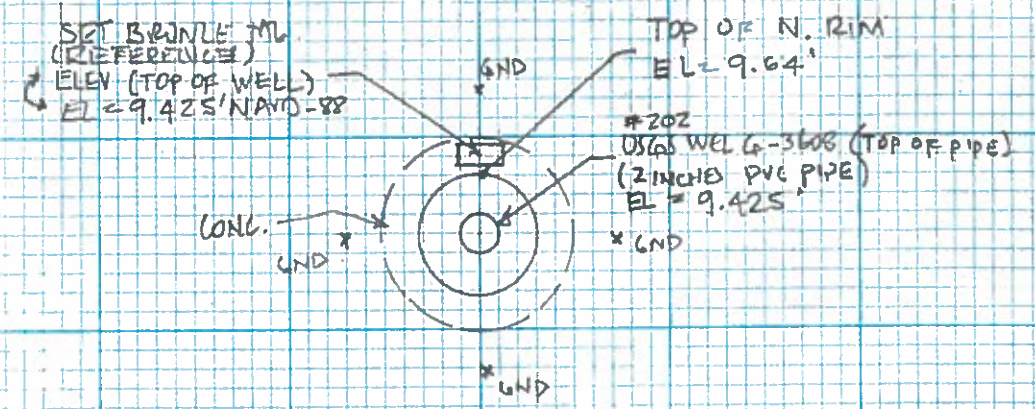
BEC #03-86445  
 F. F. W. M. D.  
 MIAMI DADE (26 WELLS)  
 LOCATION AND ELEVATIONS (N.A.D.-88)  
 OF USGS WELL G-3608  
 REF: SEE PAGE 46

\* GPS (VIA RTK APRN) OF POINTS BM-1, CP-3, BM-2  
 (3' EACH)

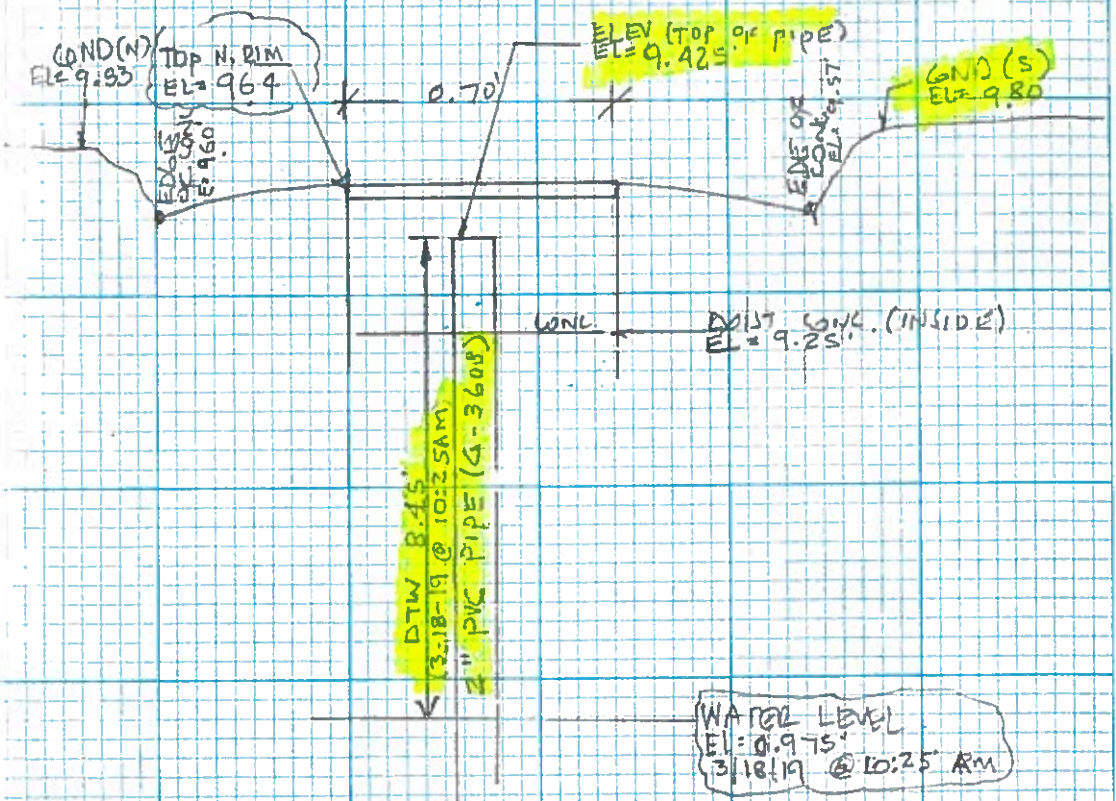


(PLAN VIEW)

2990-37



PROFILE VIEW (WELL G-3608)  
 (LOOKING EAST)



\* DTW = DISTANCE TO THE WATER TABLE INSIDE THE WELL



SET	BS	MEAN	HI	FS	MEAN
SC 24 NAVD88	4.40 3.59 2.775	3.588	17.668		
TP N. 1				3.37 2.345 1.32	2.345
SHAKE	6.17 5.13 4.09	5.13	20.453		
TP N. 2				7.36 6.40 5.445	6.402
SHAKE	3.195 2.150 1.110	2.152	16.203		
TP N. 3				6.725 5.730 4.740	5.732
SHAKE	5.70 4.65 3.60	4.65	15.122		
TP N. 4				3.670 2.670 1.665	2.668

O. LUNA  
L. BALLESTEROS  
A. LEAL  
3/16/19  
Topcon conventional

BEC # 63-8644S  
S. F. W. M. D.  
MIAMI DADE (26 WELLS)  
LOCATION & ELEVATIONS (NAVD-88)  
USGS WELLS (63608, 63609)

2990-38

ELEVATIONS	BM ELEV.	DESCRIPTION
	14.08	SW 120 ST --- 42.5' NORTH OF C/L SW ST AV --- 35' EAST OF C/L 53.5' NE OF SE2. CORNER IN INTERSECTION BRASS BAR W/ CONC. MON. ELEV 14.08 NAVD-89 SET CURVE 1/2 IT ON ASPHALT WALKWAY
15.323		
14.052		SET CURVE 1/2 IT ON ASPHALT WALKWAY SW CORNER OF THE INTERSECTION OF SW 116 ST & SW ST AV.
10.472		SET CURVE 1/2 IT ON ASPHALT WALKWAY LOCATED WOT SIDE OF THE SW ST AV ± 387' NORTH OF THE C/L OF SW 116 ST
12.453		

O. LUNA L. BALLESTEROS A. LEAL		BEC # 03. 86445 S. F. W. M. D. MIAMI DADE (26 WELLS) LOCATION & ELEVATIONS (NAVD=88) USGS WELLS (4-3608, 3609)			
SET	RS	MEAN	HI	FS	MEAN
TP N. 4	6.77 5.675 4.58	5.675	18.128		
TP N. 5				7.555 6.560 5.560	6.558
SHAKE	2.155 1.975 1.195	1.975	13.545		
TP N. 6				8.405 7.450 6.495	7.45
SHAKE	7.56 6.505 5.45	6.505	12.60		
TP N. 7				7.25 6.24 5.28	6.24
SHAKE	4.705 3.650 2.595	3.65	10.01		
TP N. 8				6.590 5.605 4.625	5.607

		2990-39
ELEVATION	BM LBLU	DESCRIPTION
	12.453	
11.57		SET CURVE & TT ON ASPHALT WALKWAY 3.418' NORTH OF TP N. 4, WEST SIDE OF THE SW 57 AVE
6.095		SET CURVE & TT ON ASPHALT WALKWAY 3.86' SOUTH OF SW 112 TOWER, WEST SIDE OF THE SW 57 AVE
6.36		SET CURVE & TT ON ASPHALT WALKWAY 3.403' NORTH OF TP N. 6
4.403		SET CURVE & TT ON ASPHALT WALKWAY

D. LUNA  
 1 BALLUSTROS  
 A LUNA

3/14/19

BEL N. 03-86445  
 S. F. W. M. D.  
 MIAMI DADE (ZLNALW)  
 LOCATION & ELEVATIONS (NAVD-88)  
 OF USGS WALLS 4-3608 & 4-3609

SET	BS	MEAN	HI	FS	MEAN
TP N. 8	4.870 3.830 2.79	3.83	8.233		
TP N. 9				5.280 4.310 3.335	4.308
SHAKE	6.21 5.175 4.145	5.177	9.102		
TP N. 10				6.555 5.490 4.425	5.49
SHAKE	6.33 5.27 4.8.21	5.27	8.882		
TP N. 11				5.570 4.610 3.655	4.612
SHAKE	6.275 5.185 4.100	5.187	9.457		
TP N. 12				5.885 4.88 3.88	4.882

2990-40

ELEVATION	BM ELEV	DESCRIPTION
4.403		
3.925		SET CORNER & IT ON ASPHALT WALKWAY
3.612		SET CORNER & IT ON ASPHALT WALKWAY ± 421' N. OF TP N. 9
4.27		SET CORNER & IT ON ASPHALT WALKWAY ± 100' SOUTH OF Q OF SW 107 STREET IN THE EAST SIDE OF THE SW ST AVE
4.575		

O. LUNA L. BALLESTEROS A. LENA 3/16/19		BEC # 03-86445 S. F. W. M. D. MIAMI DADE (26 WELLS) LOCATION & ELEVATIONS (NAVD-88) OF USGS WELLS (6-3608, 6-3609)			
SET	BS	MEAN	HI	FS	MEAN
TP N. 12	6.82 5.39 3.965	5.39	9.967		
BM SC 23-R	NGVD29			7.545 5.960 4.375	5.960
SHAKE	6.135 5.20 4.265	5.20	<del>9.272</del> 9.207		
TP N. 13				5.065 4.140 3.220	4.138
SHAKE	6.215 5.190 4.165	5.19	<del>10.263</del> 10.259		
TP N. 14				6.495 5.525 4.550	5.523
SHAKE	6.225 5.185 4.15	5.187	<del>9.927</del> 9.922		
TP N. 15				6.52 5.525 4.53	5.525

2990-41

ELEVATION	BM ELEV.	DESCRIPTION
4.575		
4.007	5.50 NAVD-29 1.49 401 NAVD-88	SW 10th ST - 38' NORTH OF C/L SW 5th AV - 54' WEST OF C/L BRASS BAR IN CONC. MON ELEV. 5.50 NAVD-29
<del>5.073</del> 5.069		SET CUTNLS & TT ON ASPHALT WALKWAY ± 370' N. OF E. OF SW 10th ST EAST SIDE OF THE SW 5th AV.
<del>4.74</del> 4.735		SET CUTNLS & TT ON ASPHALT WALKWAY ± 400' N. OF TP N. 13
<del>4.402</del> 4.397		SET CUTNLS & TT ON ASPHALT WALKWAY ± 406.50' N. OF TP N. 14

O LUNA  
L. BALLETEROS  
A. LUAL  
3/16/19

BEL #03-86445  
S. F. W. M. D.  
MIAMI DADE (26 WELL)  
LOCATION  $\frac{1}{2}$  ELEVATIONS (NAVD-82)  
OF USGS WELLS (6-3608, 6-3609)

SET	BS	MEAN	HI	FS	MEAN
TP N. 15	5.48 4.475 3.475	4.477	<del>8.878</del> 8.879		
TP N. 16				5.615 4.665 3.72	4.667
SHAKE	6.325 5.245 4.165	5.245	<del>9.457</del> 9.452		
TP N. 17				5.70 4.735 3.765	4.733
SHAKE	5.97 4.91 3.85	4.91	<del>9.633</del> 9.629		
TP N. 18				5.205 4.28 3.36	4.282
SHAKE	6.585 5.560 4.530	5.558	<del>10.91</del> 10.905		
TP N. 19				3.360 2.430 1.495	2.428

ELEVATION	BM ID	DESCRIPTION
<del>4.402</del> 4.397		
<del>4.212</del> 4.207		SET CONTROL $\frac{1}{2}$ IT ON ASPHALT WALKWAY, $\pm 390'$ N. OF TP N. 15
<del>4.723</del> 4.719		SET CONTROL $\frac{1}{2}$ IT ON ASPHALT WALKWAY $\pm 409.5'$ N. OF TP N. 16
<del>5.332</del> 5.347		SET CONTROL $\frac{1}{2}$ IT ON ASPHALT WALKWAY $\pm 396.5'$ N. OF TP N. 17
<del>8.482</del> 8.477		SET CONTROL $\frac{1}{2}$ IT ON ASPHALT WALKWAY $\pm 392'$ N. OF TP N. 18

O. LUNA  
L. BALLESTEROS  
A. LEAL  
3/16/19

BEL #03-86445  
S. F. W. M. D.  
MIAMI DADE (26 WELLS)  
LOCATION & ELEVATIONS (NAVD-88)  
OF USGS WELLS (G-3608, G-3609)

SET	BS	MEAN	HI	FS	MEAN
TP N. 19	7.145 6.135 5.130	6.137	<del>14.618</del> 14.614		
TP N. 20				6.845 5.900 4.950	5.898
SHAKE	7.235 6.215 5.195	6.215	<del>14.935</del> 14.930		
CP 1 (BM-1)				5.56 5.08 4.60	5.08
SHAKE	5.09 4.78 4.47	4.78	<del>14.635</del> 14.630		
CP 3				5.56 5.21 4.87	5.213
SITAKE	5.43 4.815 4.20	4.815	14.237 14.232		
CP 2 (BM-2)				4.905 4.615 4.325	4.615

ELEVATION	BM ELEV	DESCRIPTION
	<del>8.482</del> 8.477	
<del>8.712</del> 8.715		SET CUT N. 1/2 IT
		SET MAIN STAMPOD BEL G 129 G-3608 ON ASPHALT WALKWAY.
<del>9.855</del> 9.850		
		SET MAIN (W) BQ 0129
<del>9.422</del> 9.417		
<del>9.622</del> 9.617		

O. LUNA  
 L. BALLESTEROS  
 A. LEAL  
 3116119

BEC #03-26445  
 S. F. W. M. D.  
 MIAMI DADG (26 WELLS)  
 LOCATION & ELEVATIONS (NAVD-88)  
 OF USGS WELLS (G-3608, G-3609)

SET	BS	MEAN	HZ	FS	MEAN
CP2 (BM-2)	5.84				
BM G-3608	4.81 3.775	4.808		14.43 14.425	
TP N-21				4.37 3.40 2.43	3.40
SHAKE	4.820 3.860 2.84	3.86		14.89 14.885	
TP N-22				6.905 6.135 5.360	6.133
SHAKE	4.17 3.275 2.38	3.275		12.032 12.027	
TP N-23				6.365 5.390 4.420	5.392
SHAKE	7.04 6.025 5.015	6.027		12.667 12.662	
BM SC-38 (29)				4.360 3.760 3.155	3.758

ELEVATION	BM ELEV.	DESCRIPTION
	9.522 9.617	
11.025 11.025		SET CUT N.L. IT ON ASPHALT WALKWAY ± 55' S. OF G/L OF SW 91 ST. EAST SIDE OF THE SW ST. AVS.
8.757 8.752		SET CUT N.L. IT ON ASPHALT WALKWAY ± 358.5' N OF THE TP N. 21.
6.640 6.635		SET CUT N.L. IT.
8.908 8.904	10.40 NAVD-88 -1.49 8.91 NAVD-88	SW 88 ST. --- SW 57 AV. --- BRASS BAR IN CONC. WHEELGUARD AT SE CORNER OF BRIDGE OVER SNAPEL CREEK E1 = 10.40 NAVD-88
ELR-02 = -0.006		

O. LUNA  
L. BALLESTREDA  
A. LEAL  
3/18/19  
8644SLG

BER #03-8644S  
S. F. W. M. D.  
MIAMI DADE (26 WELLS)  
LOCATION & ELEVATIONS (NAD-88)  
OF USGS WELL G-3508

INST @ PT #2 (200-226)  
HT = 5.265

STA	TH	HORIZ	VERT	SLOPE	DIST	DESC.
200 = 3	4.73	00°00'00"	90°25'06"	139.800		MINW ELEM
201 = 2	4.73	350°49'28"	90°11'35"	222.270		BM 2

2990-45



O. LUND  
L. BALLESTEROS  
A. LEAL  
3/18/19

BEL #03-86445  
S. F. W. M. D.  
MIAMI DADE (26 WELLS)  
LOCATION & ELEVATIONS (NAV. 88)  
OF USGS WELL G-3608

2990-46

SET	BS	MBAN	HZ	FS	MEAN
PT N. 1	5.095 4.785 4.475	4.785	14.635		
GNO (NOPTA)				4.805	
RIM (NOPTA)				4.995	
CONC.				5.385	
WELL G-3608				5.485 5.21 4.935	5.21
SHAKE	5.53 5.19 4.85	5.19	14.615		
CP 3				5.48 5.195 4.91	5.195
* MATCH WITH PAGE N. 37					

ELEVATION	BM ELEV.	DESCRIPTION
	9.850	SET MNLW BEL 0129, STAMPED G-3608 SEE PAGE N. 43
9.83		
9.64		
9.25		(INSIDE THE CASING)
9.425		TOP OF 2" PVC PIPE.
9.42	9.417	SET MNLW BEL 0129, STAMPED G-3608 SEE PAGE 43

Survey Control Points
Horizontal
?


SC-24 - EXISTING

**Name:** SC-24

Elev(NGVD29): 15.57  
Elev(NAVD88): 14.08  
Northing: 482,816.73  
Easting: 892,101.13

**Location1:** SW 120 ST --- 42.5' NORTH OF C/L  
**Location2:** SW 57 AVE --- 35' EAST OF C/L  
**Location3:** 53.5' NE OF SEC CORNER IN INTERSECTION  
**Description1:** BRASS BAR IN CONC MON.  
**Description2:**

Field Book: 490-06  
Zones: VI  
Circuit: 136  
Set Date:  
Locator: 5002  
Last Check: 07-08-2012  
Adjustment:  
Adjustment-Date: 04-14-2011  
Status: EXISTING



## Public Works Survey Control Point

5701

Welcome to Miami-Dade County Survey Control Points.

Public Works Survey Control Points is an Web Application that displays the Horizontal and Vertical Control Points layers as well as street maintenance layer and Municipality for Miami-Dade County. It is being used by Public Works Department in Miami-Dade County.

The information available in this search has been assembled for the use of Miami-Dade County Public Works for the design and development of Public Works projects. No degree or order of accuracy has been assigned to data in this package unless specifically stated.

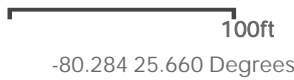
Although this package has been prepared from the best available information, Miami-Dade County assumes no responsibility for the accuracy or completeness of the information or any errors or omission and makes no warranties, expressed or implied, concerning accuracy, completeness, reliability or suitability of this data.

This data should not be relied upon as the sole basis for solving a problem whose incorrect solution could result in injury to person or property. Elevations must be verified consistent with procedures established by Chapter 472 Florida Statutes "Land Surveying and Mapping" and the Florida Administrative Code Chapter 61G17-6 "Minimum Technical Standards".

Some of the GIS datasets presented in this website are available for free download. Please visit our [Open Data](#) website for more information.

For questions, comments or to report a problem with this website, please email [Miami-Dade County GIS](#).

[Zoom to](#)



# Survey Control Points

Horizontal



Find address or place



SC-38 - EXISTING



Name: SC-38



Elev(NGVD29): 10.40  
Elev(NAVD88): 999.99  
Northing: 493,274.74  
Easting: 891,715.04

Location1: SW 88 ST ---

Location2: SW 57 AVE ---

Location3:

Description1: BRASS BAR IN CONC WHEEL GUARD AT SE CORNER OF BRIDGE OVER SNAPPER CREEK  
Description2: \*\* SEE BM SC-38-A BRASS BAR AT NW CORNER OF BRIDGE (EL. 10.52)

Field Book: 492-07

Zones: VI  
Circuit: 85  
Set Date:  
Locator: 5000  
Last Check: 06-14-2008  
Adjustment:  
Adjustment-Date: 12-14-2009  
Status: EXISTING



## Public Works Survey Control Point

Welcome to Miami-Dade County Survey Control Points.

Public Works Survey Control Points is an Web Application that displays the Horizontal and Vertical Control Points layers as well as street maintenance layer and Municipality for Miami-Dade County. It is being used by Public Works Department in Miami-Dade County.

The information available in this search has been assembled for the use of Miami-Dade County Public Works for the design and development of Public Works projects. No degree or order of accuracy has been assigned to data in this package unless specifically stated.

Although this package has been prepared from the best available information, Miami-Dade County assumes no responsibility for the accuracy or completeness of the information or any errors or omission and makes no warranties, expressed or implied, concerning accuracy, completeness, reliability or suitability of this data.

This data should not be relied upon as the sole basis for solving a problem whose incorrect solution could result in injury to person or property. Elevations must be verified consistent with procedures established by Chapter 472 Florida Statutes "Land Surveying and Mapping" and the Florida Administrative Code Chapter 61G17-6 "Minimum Technical Standards".

Some of the GIS datasets presented in this website are available for free download. Please visit our [Open Data](#) website for more information.

For questions, comments or to report a problem with this website, please email [Miami-Dade County GIS](#).

[Zoom to](#)

