



RMBAKER LLC

WELL GL-328
UWI GL-328

Geology and Geophysics

8600 Oldbridge Lane
Orlando, FL 32819
mobile ph 407-733-8958

LOG STAGE EXPLORATORY

rob@rmbaker.com
www.rmbaker.com

HEADER NOTES:

COMP RMBAKER LLC
LOC GLADES COUNTY
FLD GLADES COUNTY
CNTY GLADES
STAT FL
PROV FL
CTRY USA

LATI 26.827820 X
LONG -81.536870 Y
GDAT WGS84 HDAT
SEC ELEV
TWP V DAT
RGE

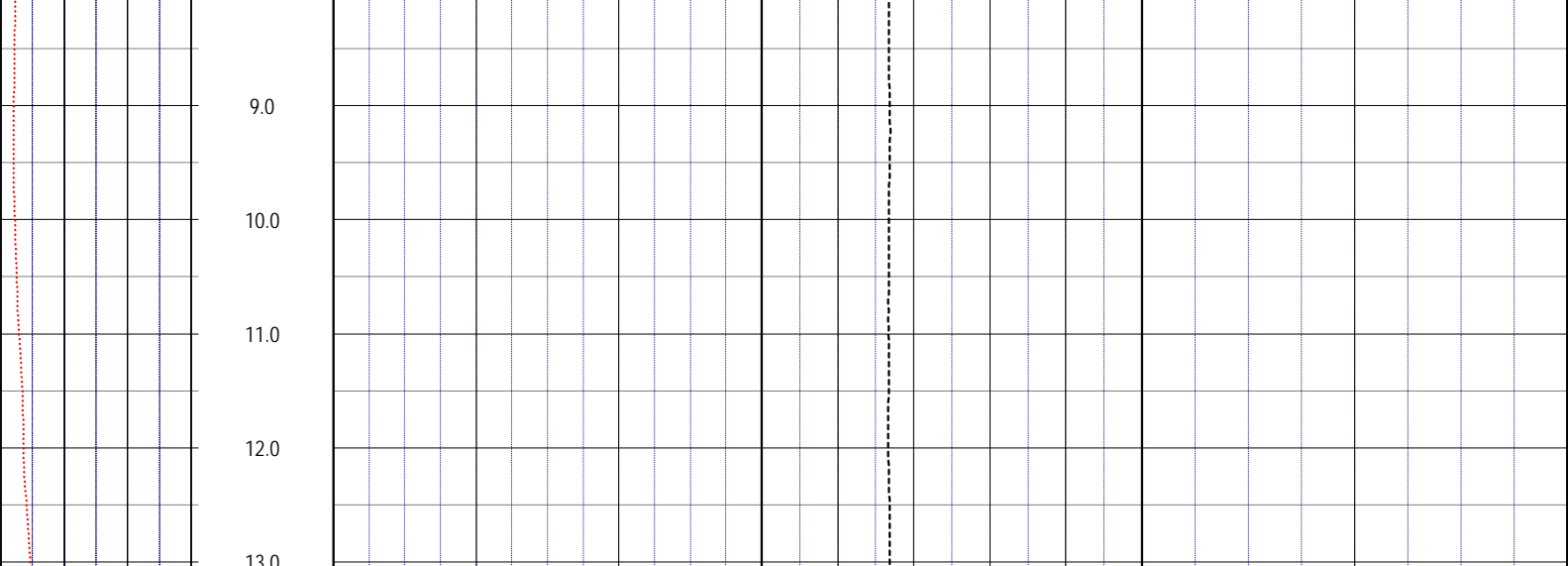
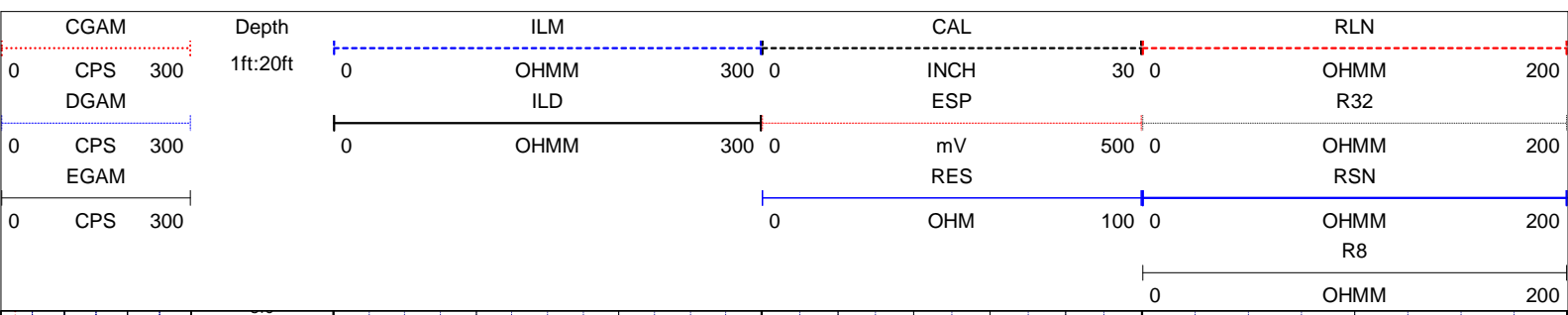
ALL SERVICES:
CALIPER
NATURAL GAMMA
DUAL INDUCTION
ELECTRIC LOG
SONIC
VIDEO

PERMANENT DATUM:
LOG MEASURED FROM: GROUND SURFACE

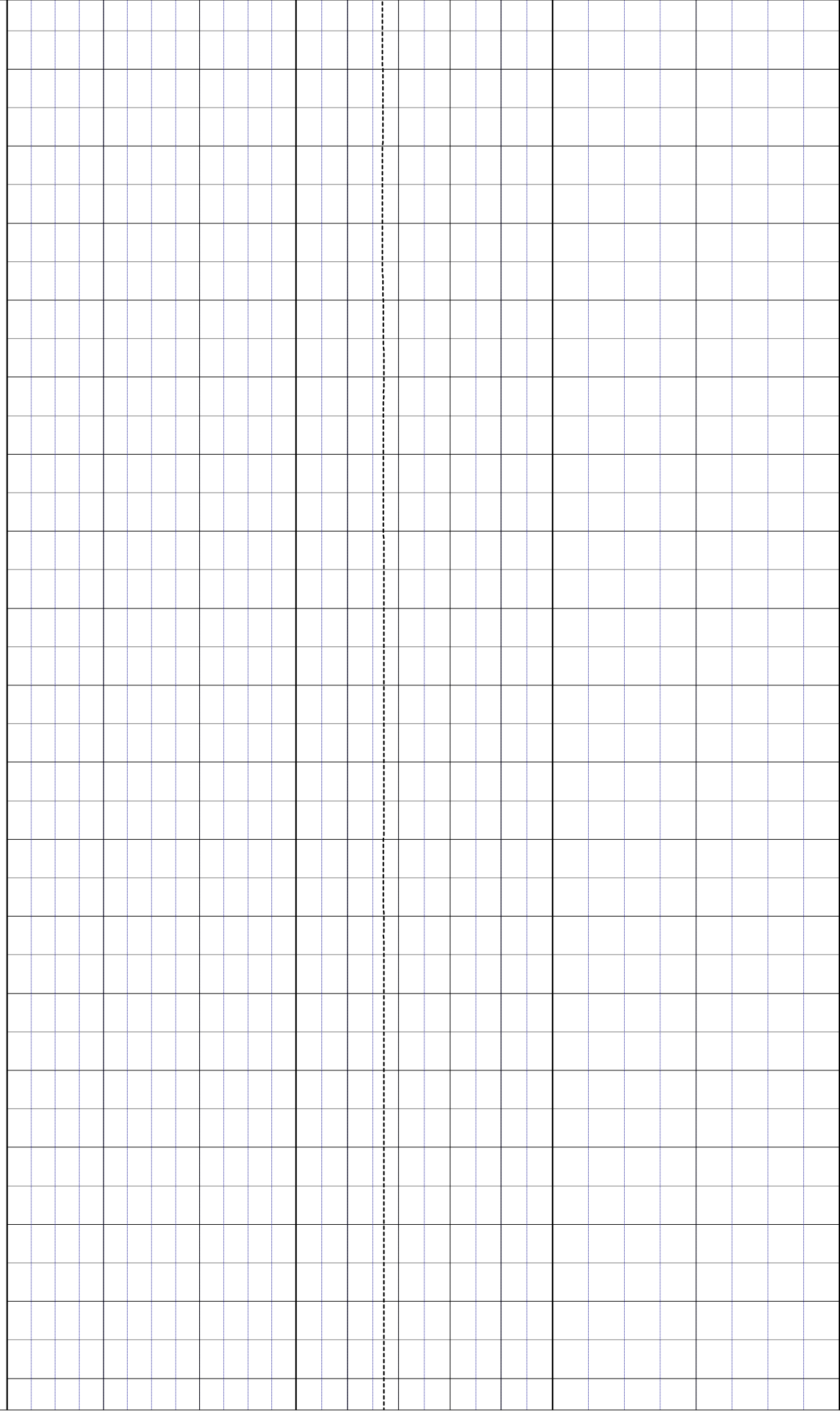
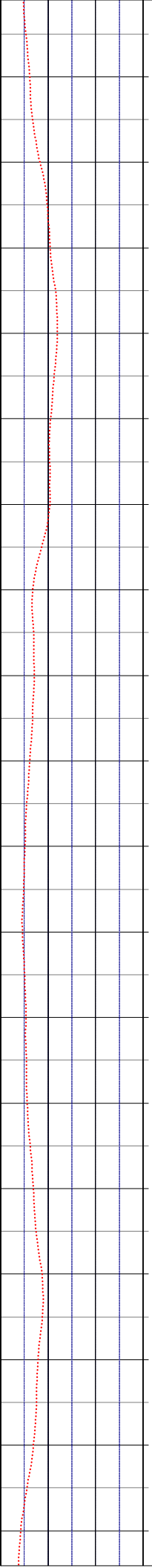
DRILLING MEASURED FROM:

DATE	16 Jul 14	TYPE FLUID IN HOLE	WATER
RUN No	1	LOGGING SPEED (FT/MIN)	30
TYPE LOG	COMPOSITE	TROLLING DIRECTION	UP
DEPTH-DRILLER		PUMPING RATE (GPM)	
DEPTH-LOGGER	121.7		
DRILLER			
RECORDED BY	RMB		
SRVC	RMBAKER LLC	API	N/A
WITNESSED BY	K. SMITH	LIC	N/A

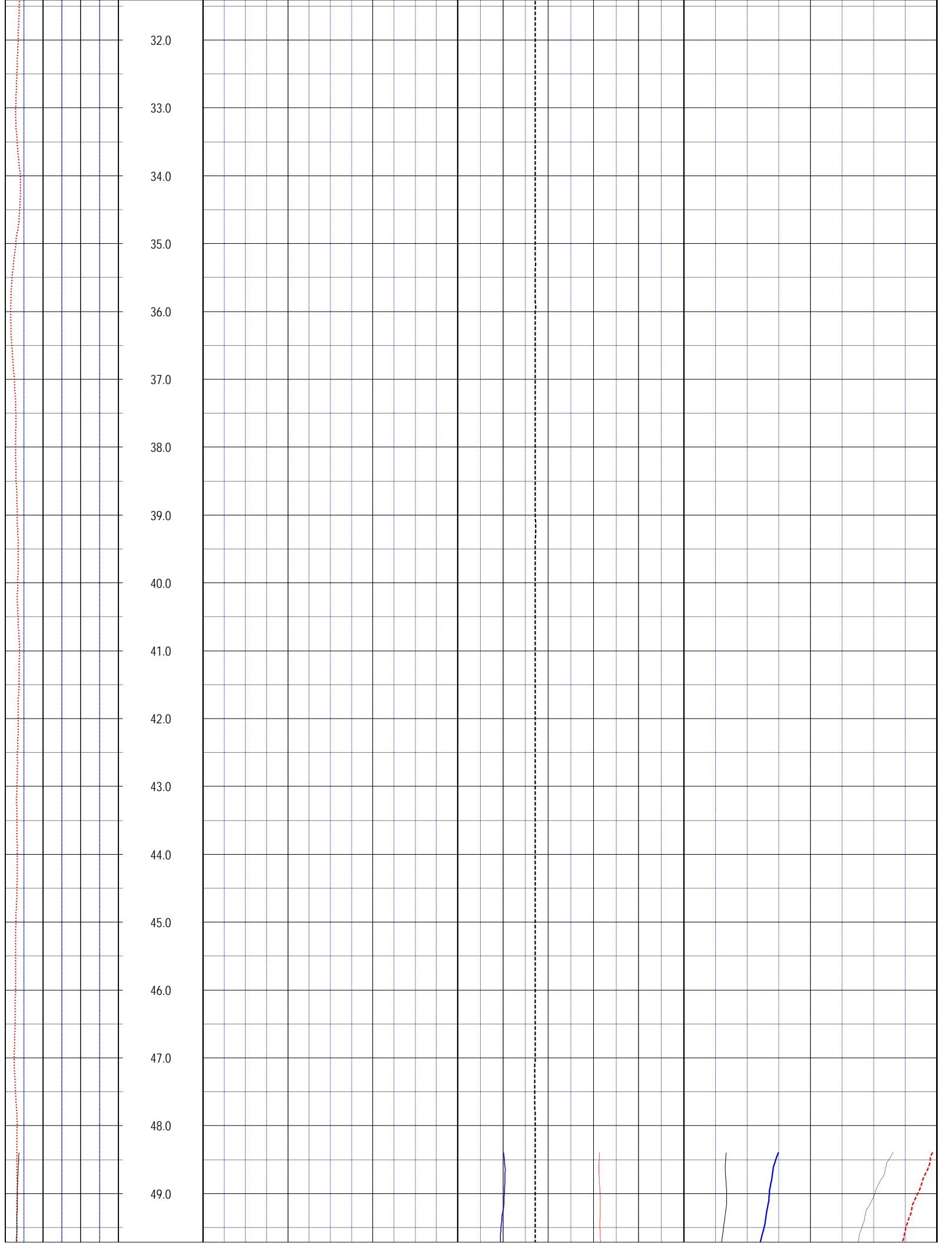
BOREHOLE RECORD		CASING RECORD					
RUN NO.	BIT	FROM	TO	SIZE	MAT.	FROM	TO
1	9.875	60	121.7	10	STEEL	0	60

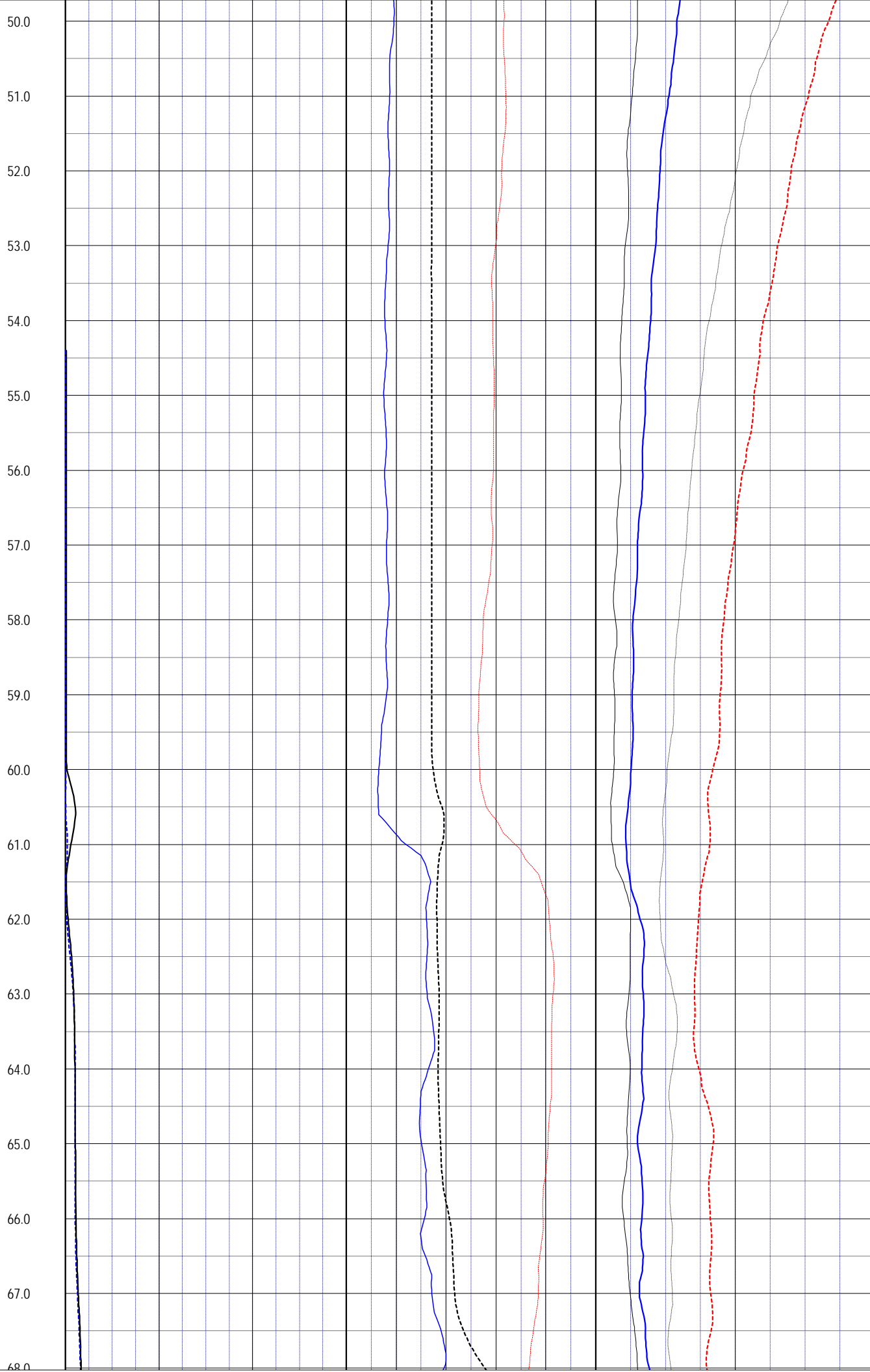


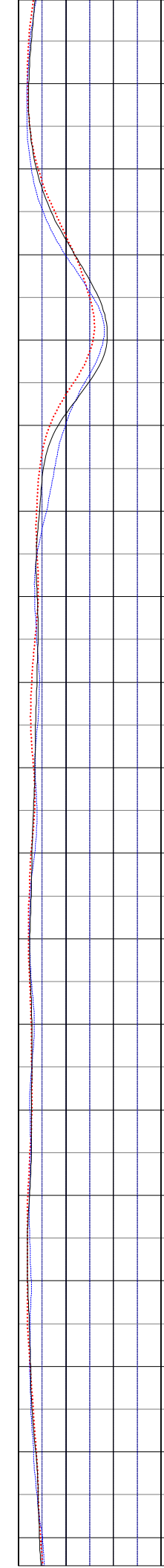
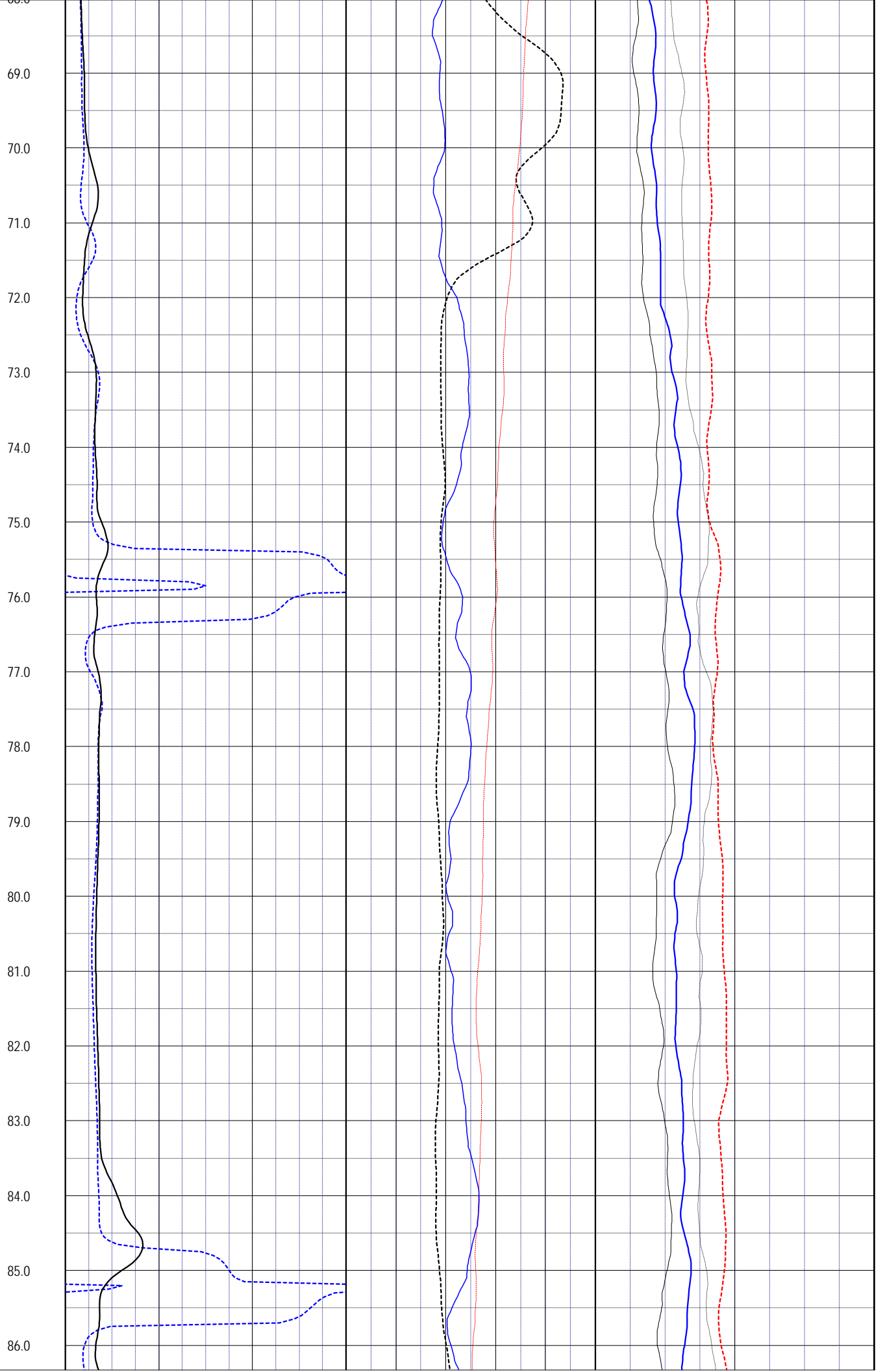
14.0
15.0
16.0
17.0
18.0
19.0
20.0
21.0
22.0
23.0
24.0
25.0
26.0
27.0
28.0
29.0
30.0
31.0

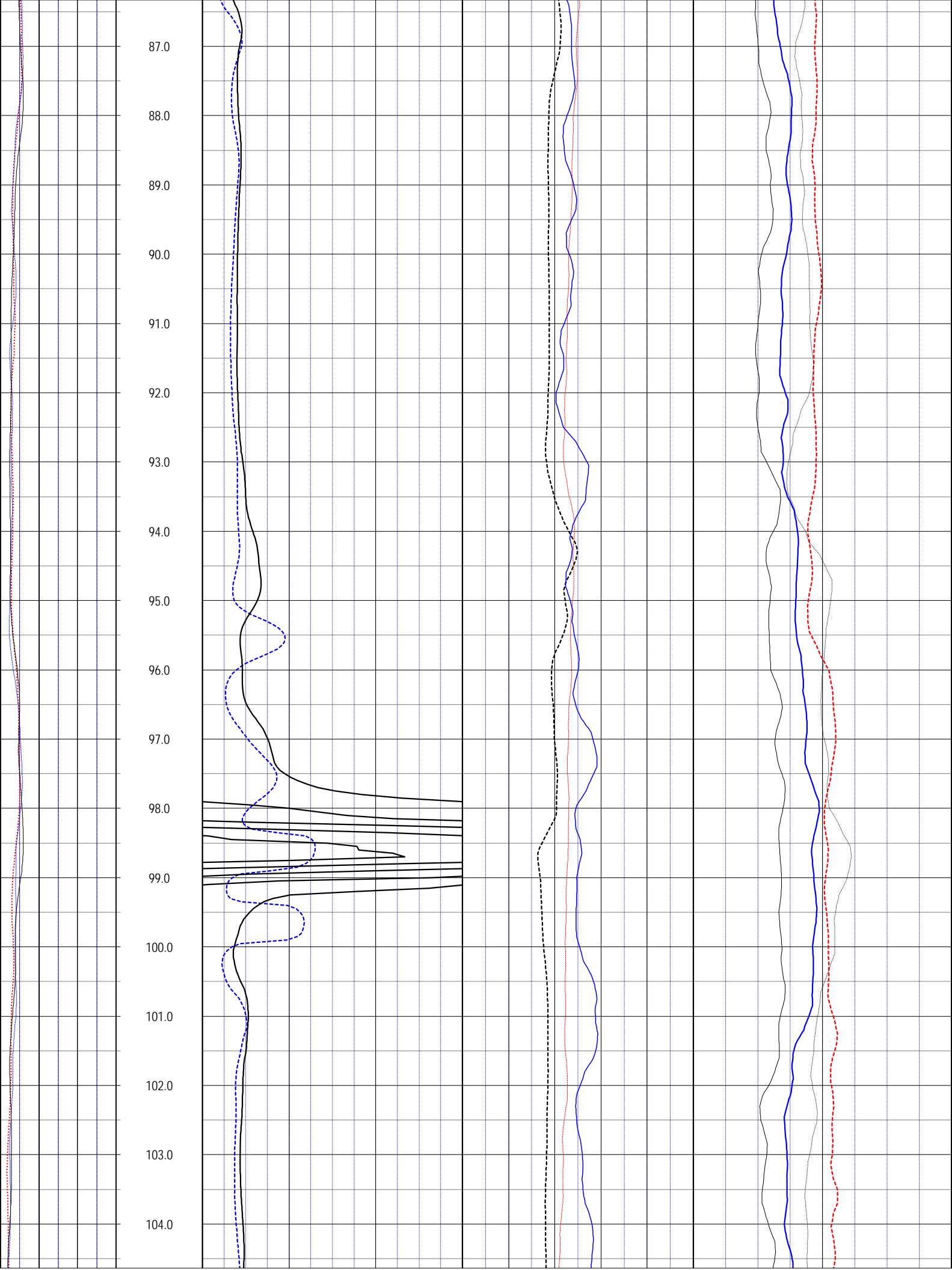


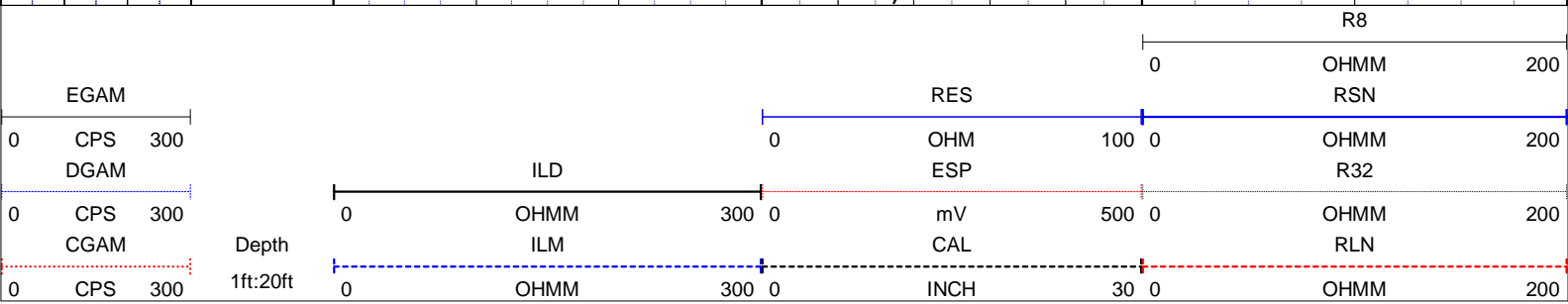
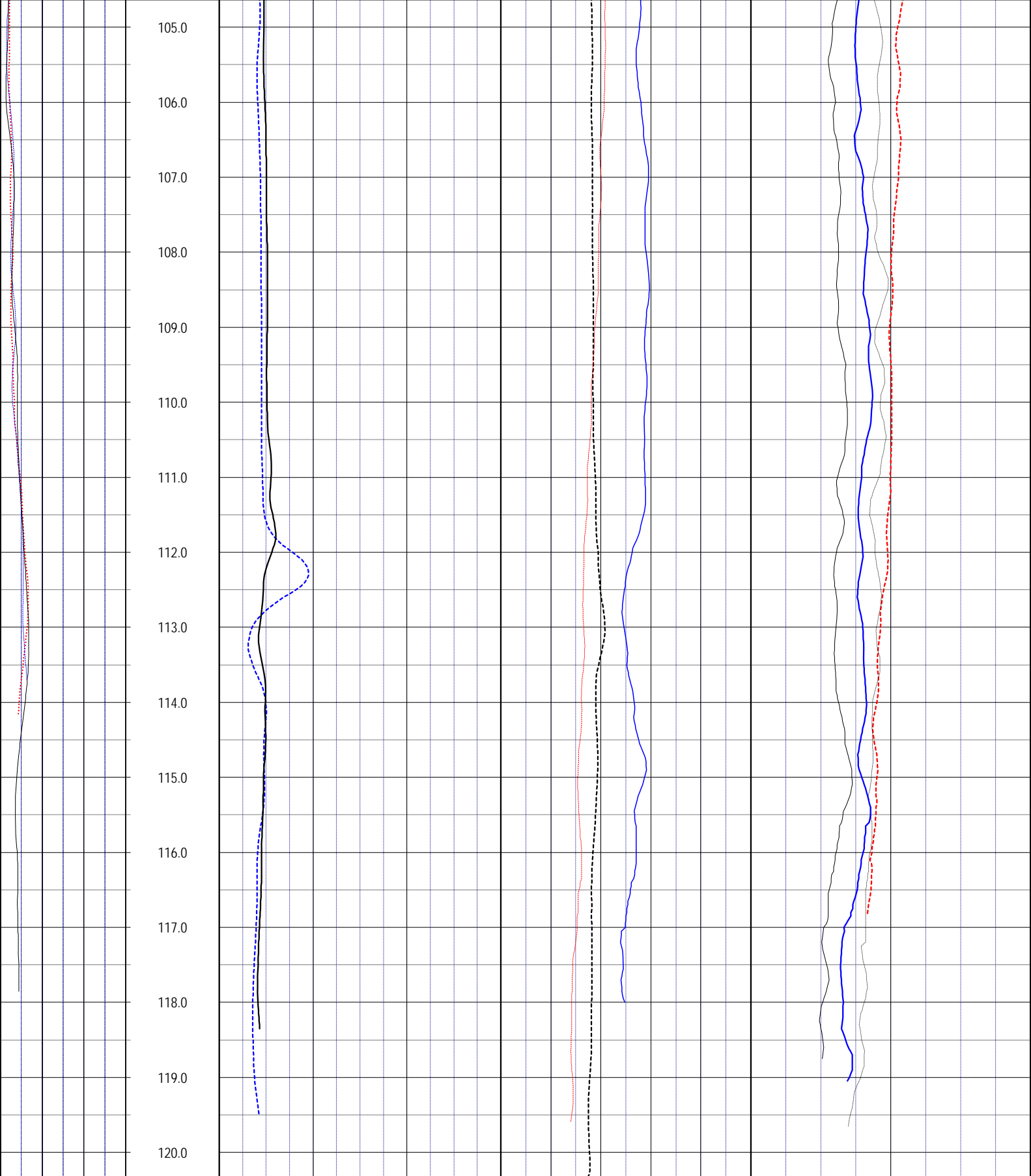
32.0
33.0
34.0
35.0
36.0
37.0
38.0
39.0
40.0
41.0
42.0
43.0
44.0
45.0
46.0
47.0
48.0
49.0











NOTES:

While due care has been exercised in the performance of these measurements and observations, in accordance with methodologies utilized by the general practitioner, RIMBAKER LLC can make no representations, warranties, or guarantees with respect to latent or concealed conditions that may exist, which may be beyond the detection capabilities of the methodologies used, or that may extend beyond the areas and depths surveyed.

The geophysical well logs show subsurface conditions as they existed at the dates and locations shown, and it is not warranted that they are representative of subsurface conditions at other locations and times.

If, at any time, different subsurface conditions from those observed are determined to be present, we must be advised and allowed to review and revise our observations if necessary.

Certificate of Authorization GB 458

END OF LOG
