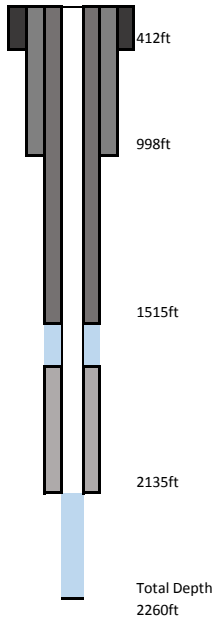


Site Name **HASR-DZMW**
 Station Names **PBF-11, PBF-12**
 Aquifers **APPZ, LFA**
 FDEP Identifier **Unknown**
 Date of this summary **8/10/2017**

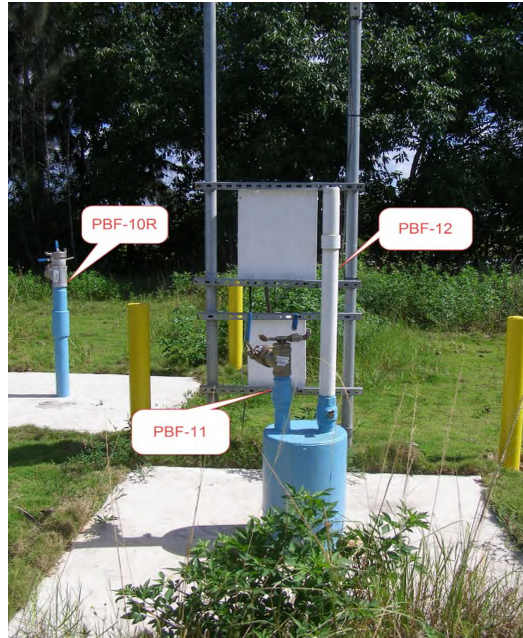
Lat / Long: **262120.286/801745.837**
 County: **Palm Beach**
 Wellhead Repair Date: **July 2014**

Land surface elevation
 12.5ft NGVD29



PBF-11 Monitor Zone
 1515-1670ft

PBF-12 Monitor Zone
 2135-2268ft



Date of photo: 2014

Reference elevations: **PBF-11(GW2) and PBF-12(GW3)**
 Access Agreement: **Hillsboro ASR; Within Hillsboro Canal right of way**
 References **SFWMD, 2001. Hydrogeologic Investigation of the Floridan Aquifer System Western Hillsboro Basin Palm Beach County, Florida. Technical Publication WS-8. 130p.**
 Borehole Volumes **PBF-11 9428 gallons**
PBF 12 1271 gallons

PBF-11 Monitor Zone

| | |
|---------------------------|-----------|
| Casing Material: | Steel |
| Diameter: | 12-inch |
| Data Range: | 2003-2009 |
| Sampling Events Analyzed: | 15 |
| Water Type: | Na-Mg-Cl |

PBF-11,5/27/2009

| | |
|------------------------------|-------|
| Field pH: | 7.88 |
| Specific Conductance (uS/cm) | 4404 |
| Temperature (Celcius) | 23.5 |
| TDS (mg/L) | 2574 |
| Water Level (ft NGVD 29) | 53.16 |

| Parameter | Min (mg/L) | Max (mg/L) |
|--------------------|------------|------------|
| Potassium (K) | 20.3 | 25 |
| Sodium (Na) | 610.5 | 723 |
| Calcium (Ca) | 64 | 100 |
| Magnesium (Mg) | 97 | 110 |
| Chloride (Cl) | 1027 | 1300 |
| Bicarbonate (HCO3) | 93 | 171 |
| Sulfate (SO4) | 290 | 380 |

PBF-12 Monitor Zone

| | |
|---------------------------|------------|
| Casing Material: | Fiberglass |
| Diameter: | 2.37 |
| Data Range: | 1999-2017 |
| Sampling Events Analyzed: | 18 |
| Water Type: | Na-Cl |

PBF-12,2/22/2017

| | |
|------------------------------|-------|
| Field pH: | 7.32 |
| Specific Conductance (uS/cm) | 44637 |
| Temperature (Celcius) | 24.77 |
| TDS (mg/L) | 28094 |
| Water Level (ft NGVD 29) | 15.04 |

| Parameter | Min (mg/L) | Max (mg/L) |
|--------------------|------------|------------|
| Potassium (K) | 271 | 380 |
| Sodium (Na) | 7908 | 9900 |
| Calcium (Ca) | 440 | 667 |
| Magnesium (Mg) | 853 | 1110 |
| Chloride (Cl) | 14700 | 18000 |
| Bicarbonate (HCO3) | 117 | 171 |
| Sulfate (SO4) | 1570 | 6500 |