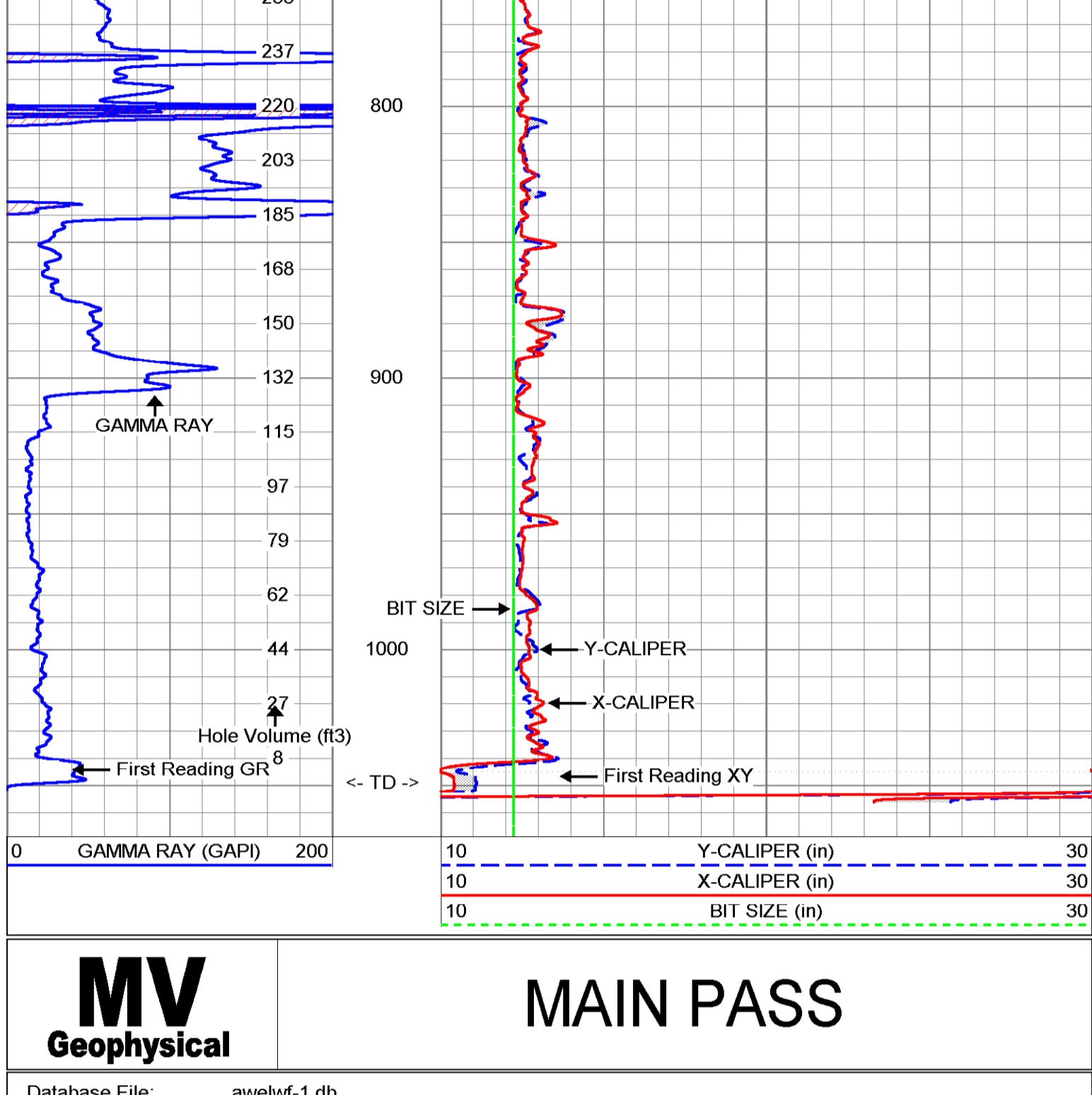
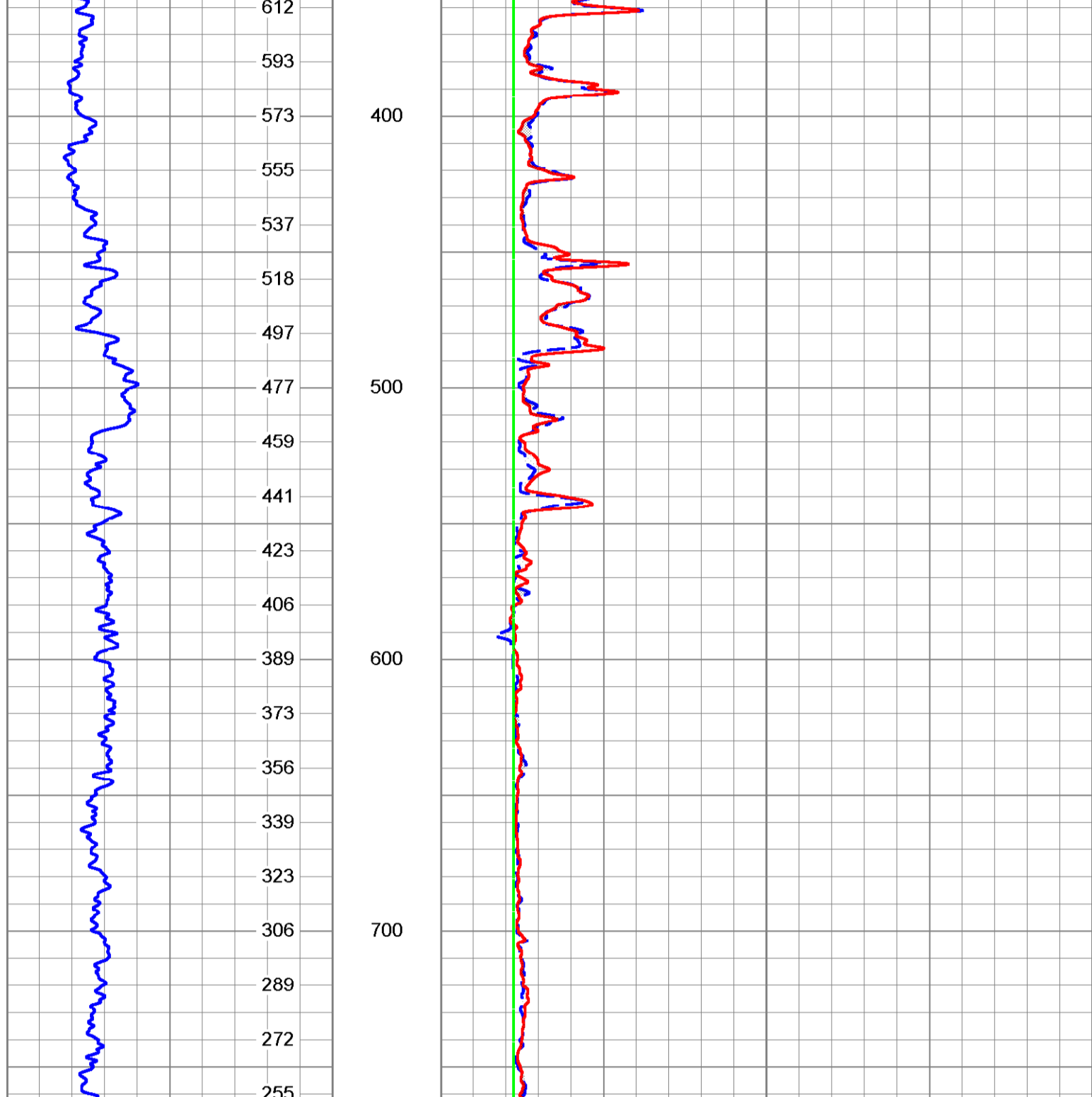
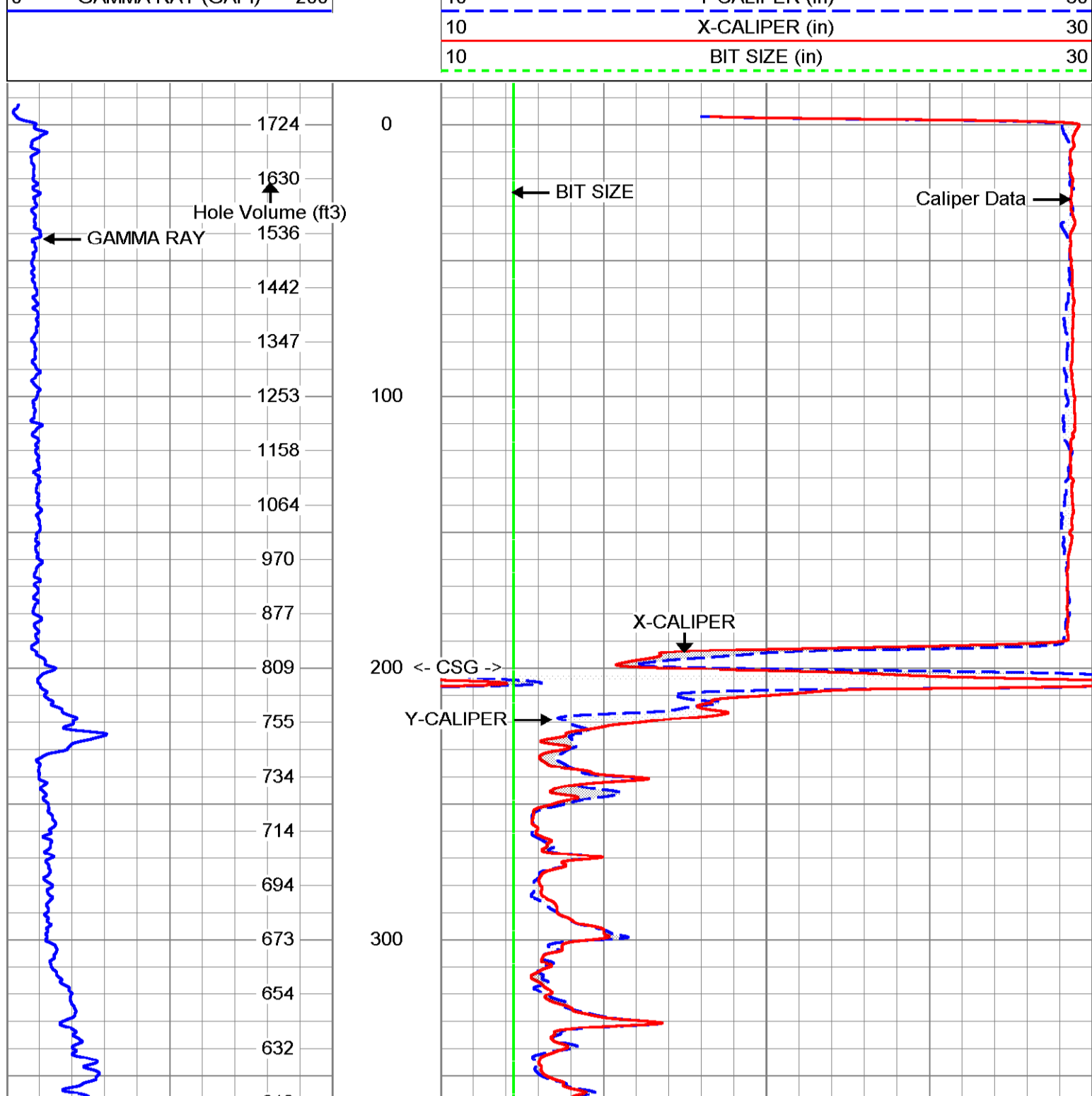
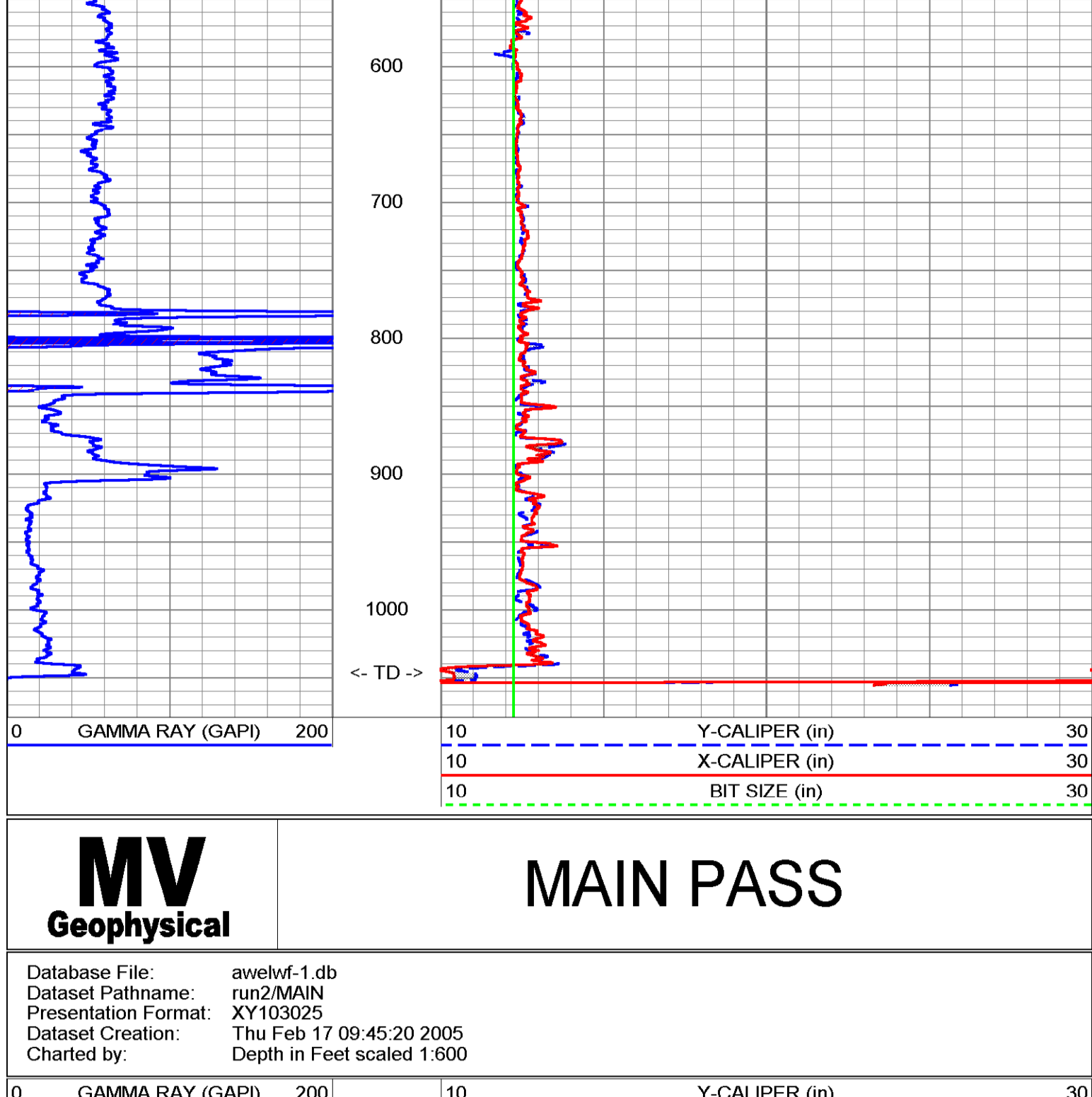


All interpretations are opinions based on inferences from electrical or other measurements and we cannot and do not guarantee the accuracy or correctness of any interpretation, and we shall not, except in the case of gross or willful negligence on our part, be liable or responsible for any loss, costs, damages, or expenses incurred or sustained by anyone resulting from any interpretation made by any of our officers, agents or employees. These interpretations are also subject to our general terms and conditions set out in our current Price Schedule.

Comments

MAXIMUM Caliper Arm Extension: 33"
 Drilling Contractor: All Webb Enterprises, Inc.



XY Caliper Calibration Report

Serial Number:	01S		
Tool Model:	XYCS		
Performed:	Thu Feb 17 08:28:42 2005		
Small Ring:	12.25	in	
Large Ring:	33	in	
Reading with Small Ring:	609.5	595	cps
Reading with Large Ring:	1046.21	1059.11	cps
Gain:	0.0475144	0.0447092	
Offset:	-16.71	-14.352	

Gamma Ray Calibration Report

Serial Number:	01		
Tool Model:	GRCH		
Performed:	Thu Feb 17 08:26:24 2005		
Calibrator Value:	120	GAPI	
Background Reading:	10.713	cps	
Calibrator Reading:	126.473	cps	
Sensitivity:	1.03663	GAPI/cps	

