



RMBAKER LLC

WELL L63N
UWI L63N

Geology and Geophysics

PROFESSIONAL LICENSES

Geologist PG2186
Licensed Geology Business

8600 Oldbridge Lane
Orlando, FL 32819
mobile ph 407-733-8958

rob@rmbaker.com
www.rmbaker.com

HEADER NOTES:
SONIC SONDE WOULD NOT ADVANCE TO TOTAL DEPTH; LOGGING OCCURRED UPWARD FROM 1336.4 FEET

COMP	SFWMD
LOC	L63N CONTINUOUS CORE
FLD	L63N CONTINUOUS CORE
CNTY	OKEECHOBEE
STAT	FL
PROV	FL
CTRY	USA
LATI	X
LONG	Y
GDAT	WGS84
SEC	H DAT
TWP	ELEV
RGE	V DAT

ALL SERVICES:	CALIPER
	NATURAL GAMMA
	ELECTRIC
	DUAL INDUCTION
	SONIC
	WATER QUALITY
	FLOWMETER

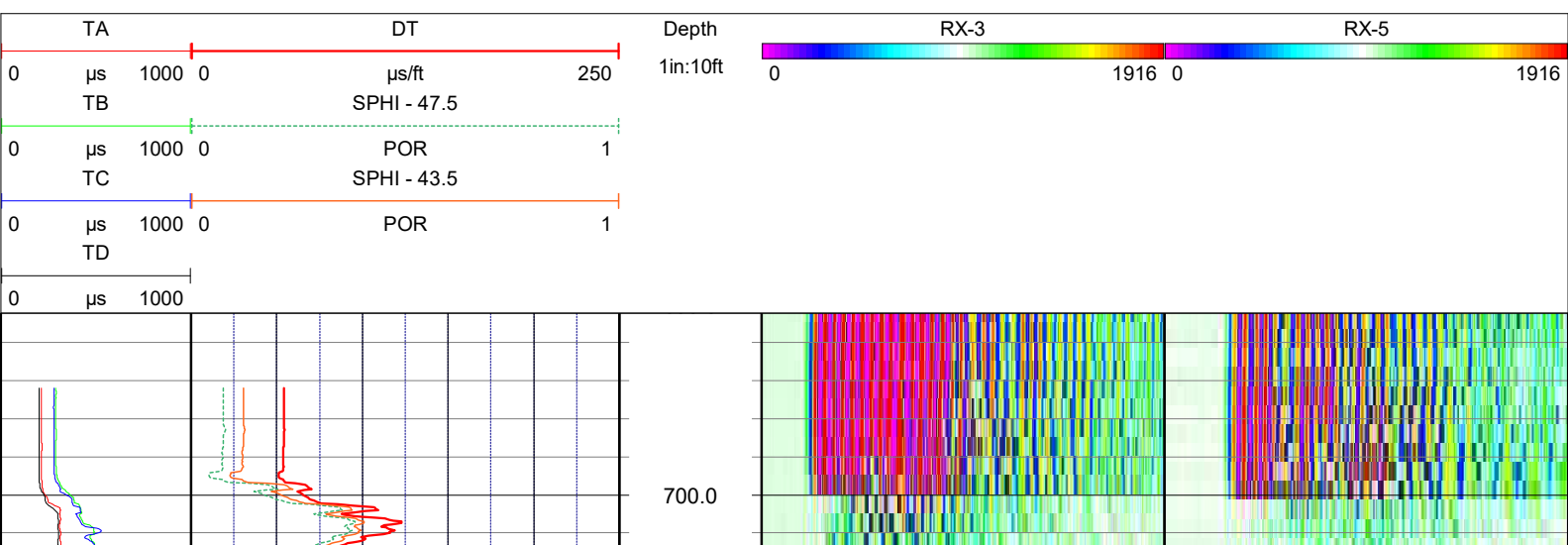
PERMANENT DATUM:
LOG MEASURED FROM: GROUND SURFACE
LOGGING MEASURED FROM: FLOW CONTROL FLANGE-29 INCHES A.G.

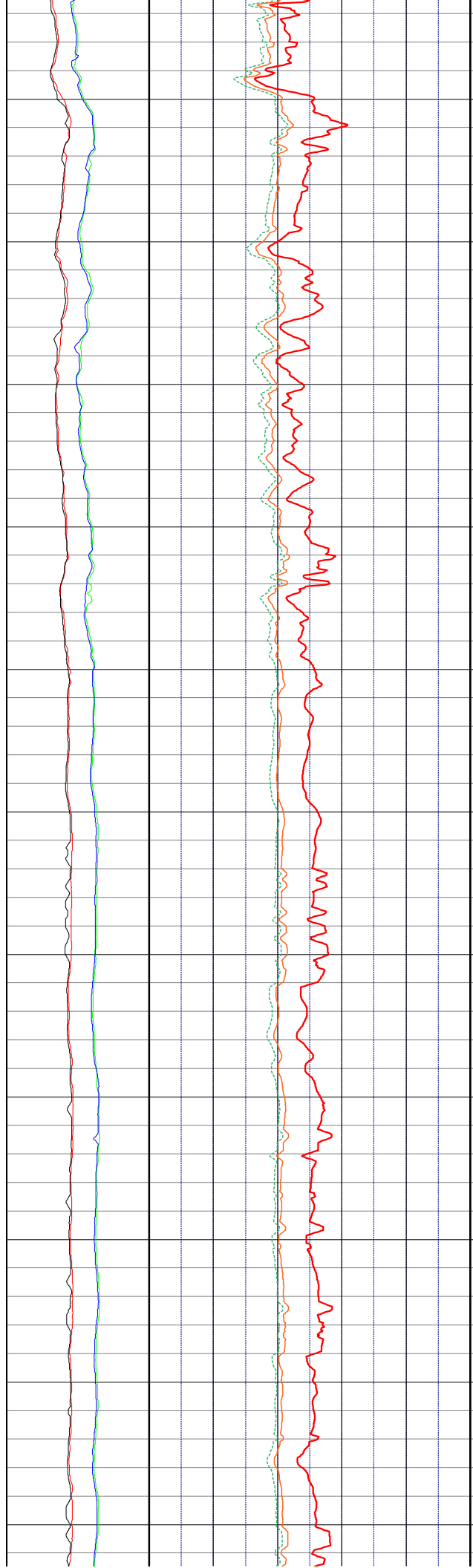
DATE	26 Mar 21	TYPE FLUID IN HOLE	WATER
RUN No	2	LOGGING SPEED (FT/MIN)	12
TYPE LOG	SONIC	TROLLING DIRECTION	UP
		PUMPING RATE (GPM)	N/A
DEPTH-DRILLER	1360		
DEPTH-LOGGER	1357.05		
DRILLER	HUSS DRILLING		
RECORDED BY	RMB		
SRVC	RMBAKER LLC	API	N/A
WITNESSED BY	STANTEC	LIC	N/A

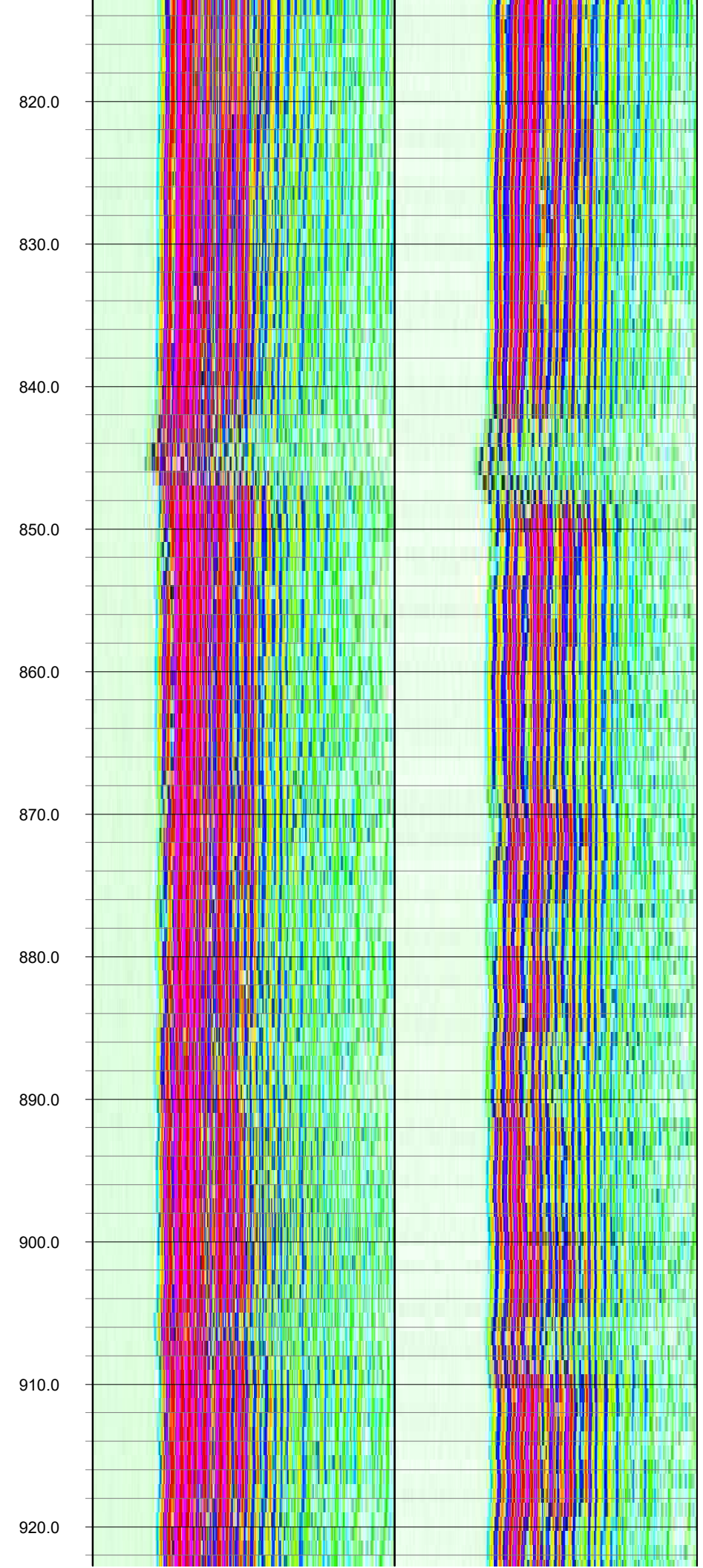
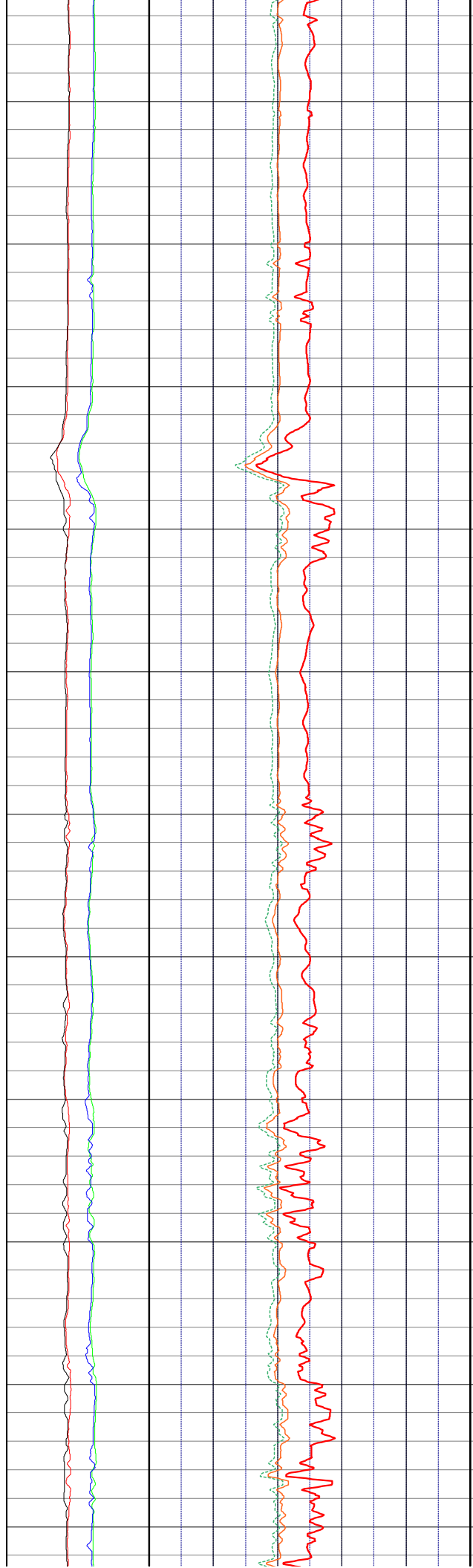
BOREHOLE RECORD		CASING RECORD				
RUN NO.	BIT FROM	TO	SIZE	MAT.	FROM	TO
1	5.875	165	703	STEEL	0	165
2	4.875	701	1357.05	STEEL	0	701

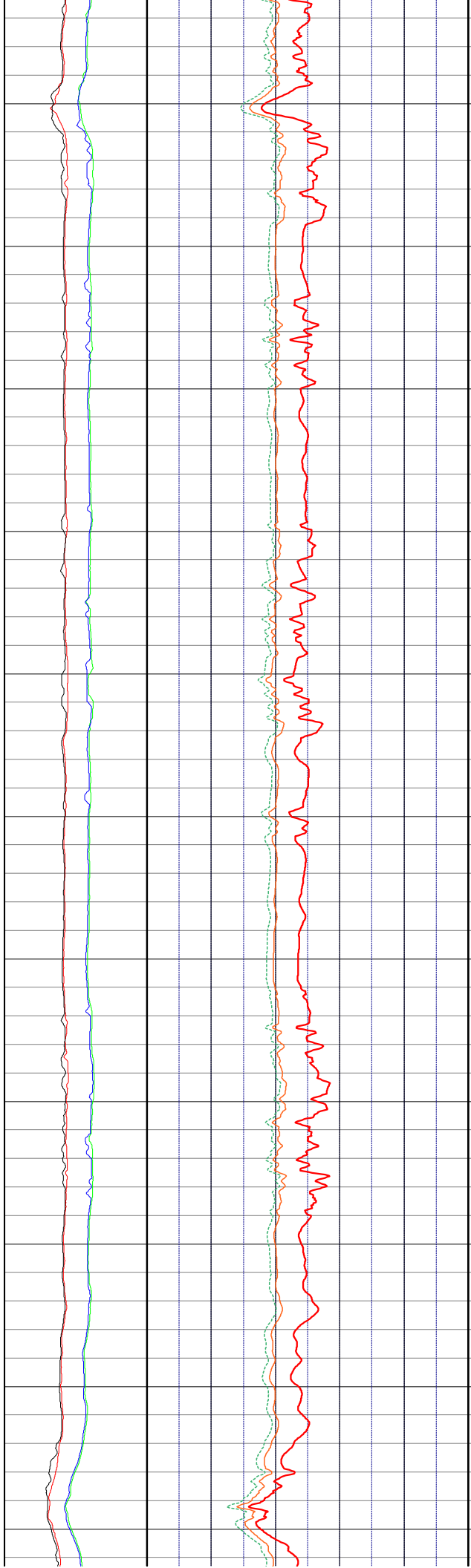
LOG CODES

3-arm caliper	CAL	long normal resistivity	RLN	deep induction conductivity	IDC
natural gamma (CPS)	GAMM	8 inch resistivity	R8	shallow induction conductivity	ISC
spontaneous potential	ESP	32 inch resistivity	R32	sonic interval velocity	DT
single point resistance	RES	deep induction resistivity	ILD	sonic porosity (RHG method)	SPHI
short normal resistivity	RSN	shallow induction resistivity	ILM	repeat designation	R









930.0

940.0

950.0

960.0

970.0

980.0

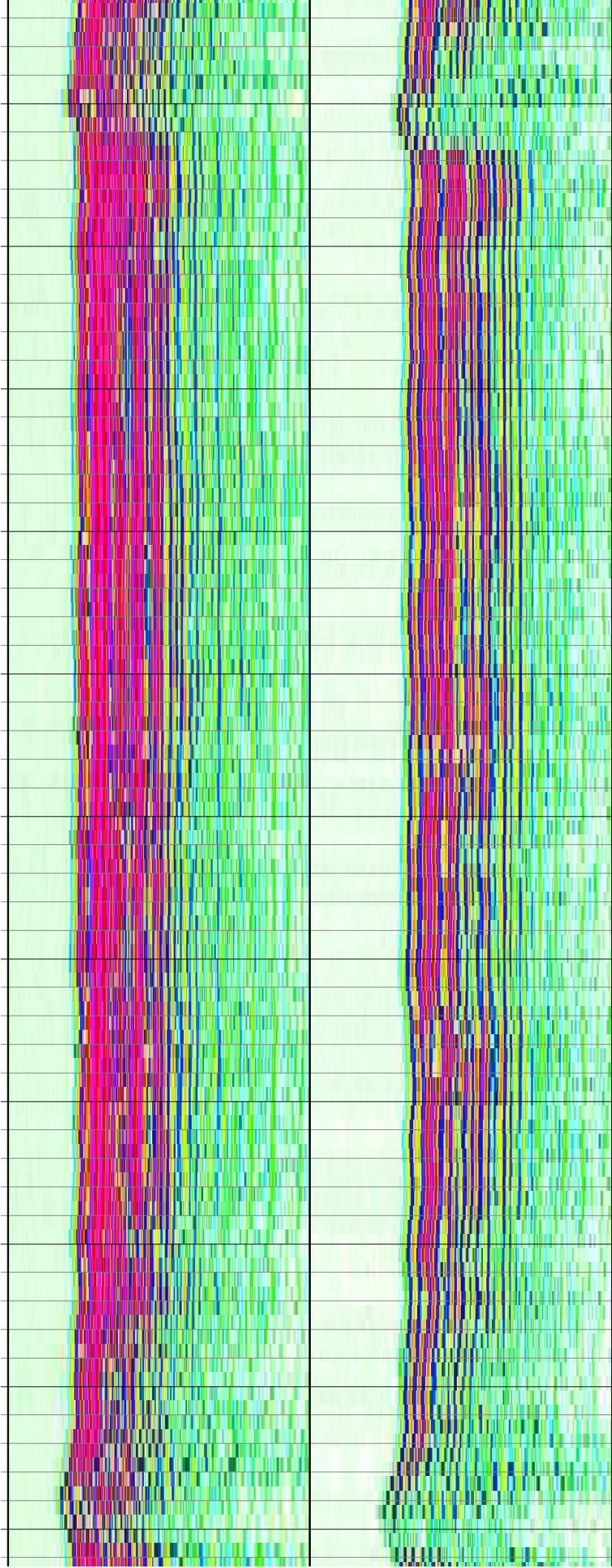
990.0

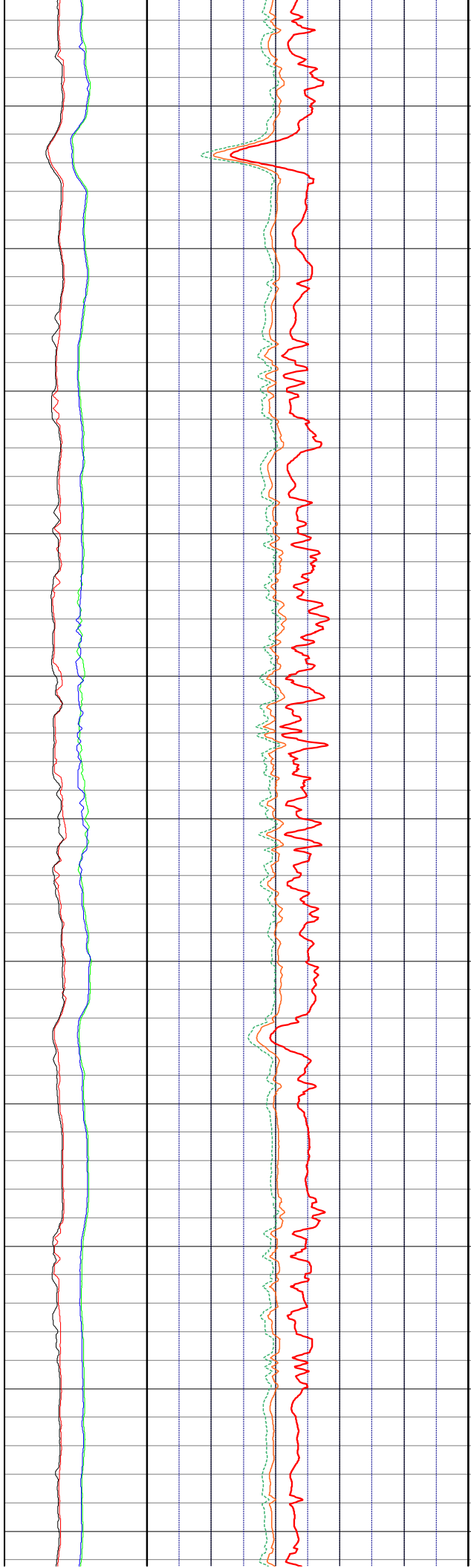
1000.0

1010.0

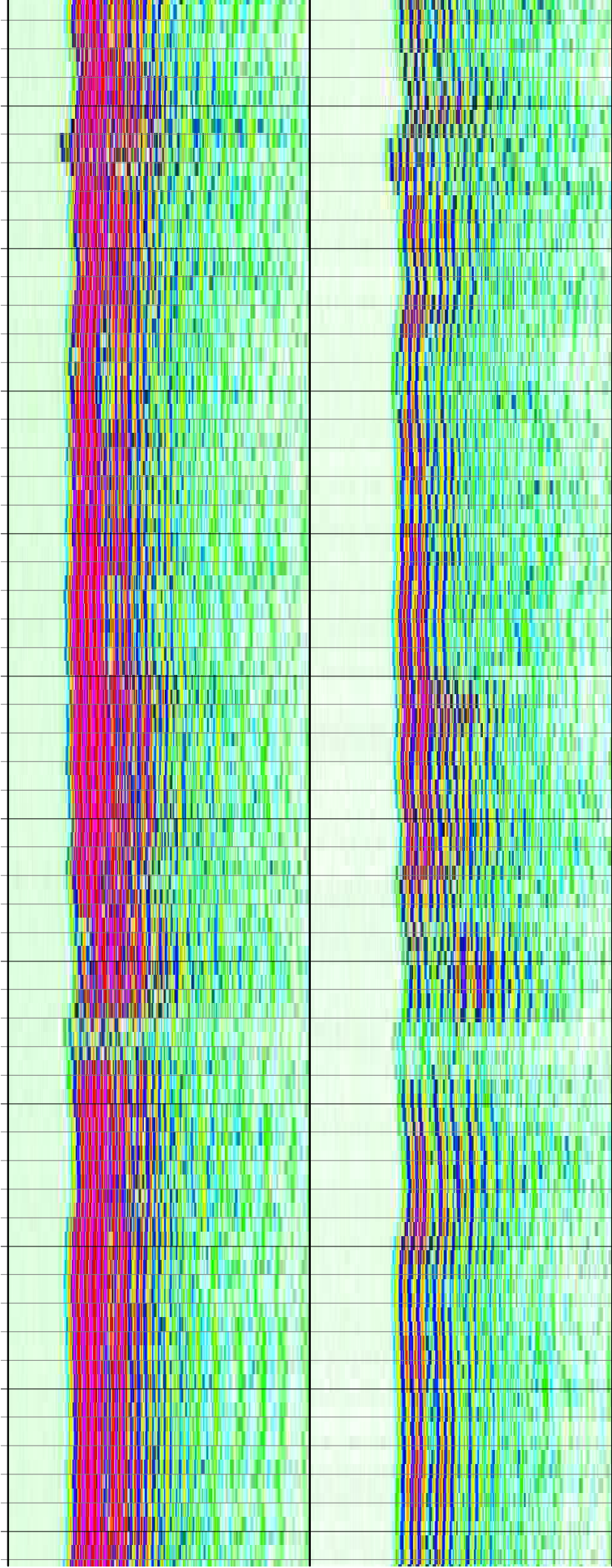
1020.0

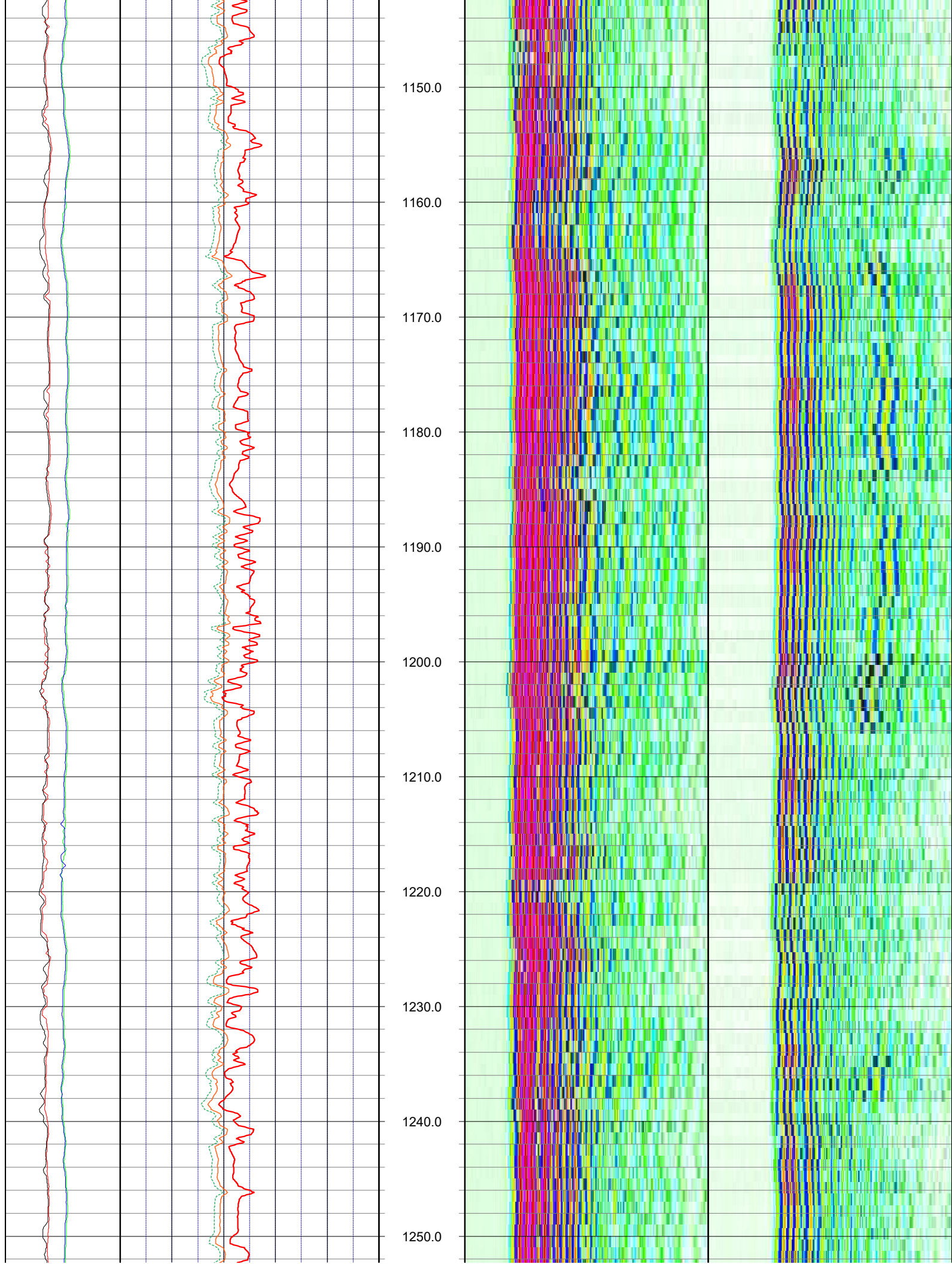
1030.0

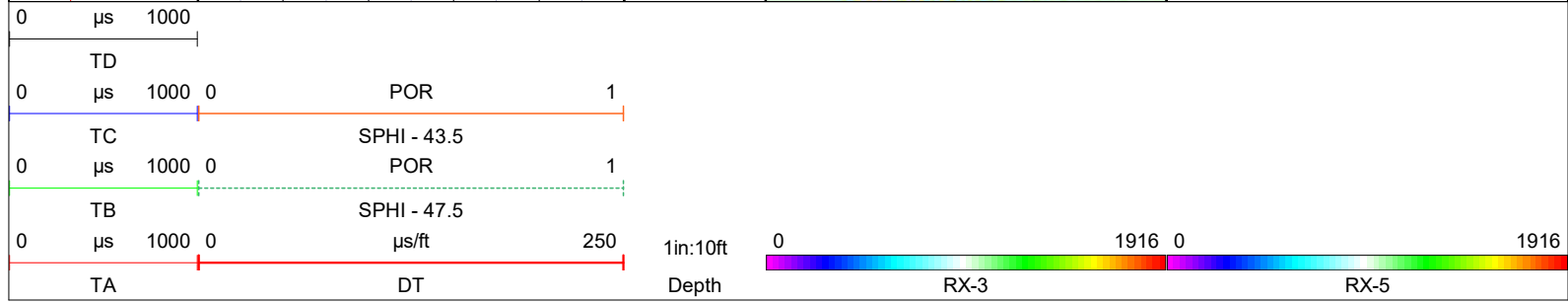
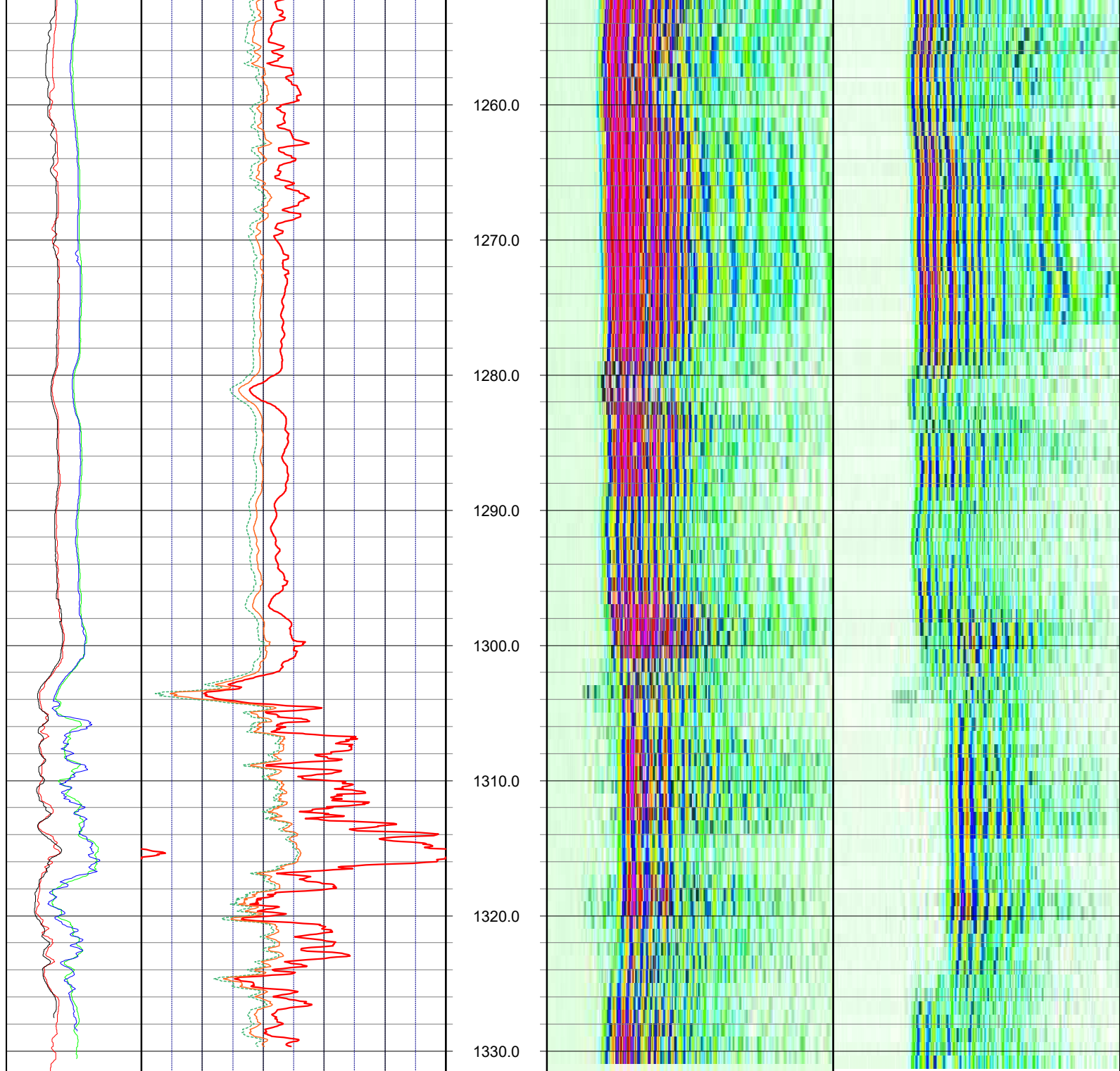




1040.0
1050.0
1060.0
1070.0
1080.0
1090.0
1100.0
1110.0
1120.0
1130.0
1140.0







NOTES:
 While due care has been exercised in the performance of these measurements and observations, in accordance with methodologies utilized by the general practitioner, RMLBAKER LLC can make no representations, warranties, or guarantees with respect to latent or concealed conditions that may exist, which may be beyond the detection capabilities of the methodologies used, or that may extend beyond the areas and depths surveyed.
 The geophysical well logs show subsurface conditions as they existed at the dates and locations shown, and it is not warranted that they are representative of subsurface conditions at other locations and times. If, at any time, different subsurface conditions from those observed are determined to be present, we must be advised and allowed to review and revise our observations if necessary.

Florida Geology Business Licenced by PG2186

END OF LOG

