



Well Number: MFEB9-GW1
 Client Name: South Florida Water Management District
 Project Name: J. W. Corbett Wildlife Management Area
 Project Number: 060735 Logged By: Y. Delmas
 City & State: West Palm Beach , Florida Attachment:

Depth (ft) Elev (ft) (NAVD88)	SUBSURFACE PROFILE		SAMPLE				Well Completion Details	
	Symbol	Description	Depth/Elev	Number	Type	n - Value	Vapor	
0 21.0		Black SAND with organics and roots (SP)		1	SS	5		
		Light brownish gray (6/2) SAND with some shell fragments (limestone formation) (SP)	4/17.0	2	SS	9		
			6/15.0	3	SS	4		
10 11.0		Dark gray (4/1) fine SAND with little shell fragments (SP)		4	SS	10		
				5	SS			
				6	SS	23		
			14/7.0	7	SS	21		
		Dark gray (4/1) fine SAND with little shell fragments (SP)		8	SS	14		
				9	SS	19		
20 1.0		Gray (5/1) fine SAND with some shell fragments (SP)		10	SS	7		
				11	SS	8		
			24/-3.0	12	SS	5		
		Dark gray (3/1) fine SAND with some shell fragments and trace of roots (SP)		13	SS	3		
				14	SS	3		
				15	SS	14		
30 -9.0			32/-11.0	16	SS	21		
		Gray (5/1) fine SAND with trace of shell fragments (SP) (HCL reaction)		17	SS	28		
				18	SS	49		
				19	SS	45		
40 -19.0			43/-22.0	20	SS	47		
				21	SS	59		
				22	SS	50=6"		
				23	SS	50=6"		
				24	SS	50=6"		
				25	SS	50=5"		
50 -29.0		Gray (5/1) fine calcareous SAND with trace of shell fragments (SP) (HCL reaction)		26	SS	50=5"		
				27	SS	50=6"		
				28	SS	67		
				29	SS	75		
60 -39.0			60/-39.0	30	SS	67		

Drilled By: Centerline Drilling, inc. Hole Size: 6 inch diameter
 Drilling Method: Bentonite Mud Rotary Datum: NAVD 1988 (Elevation estimated)
 Drill Date: September, 2015 Sheet: 1 of 2



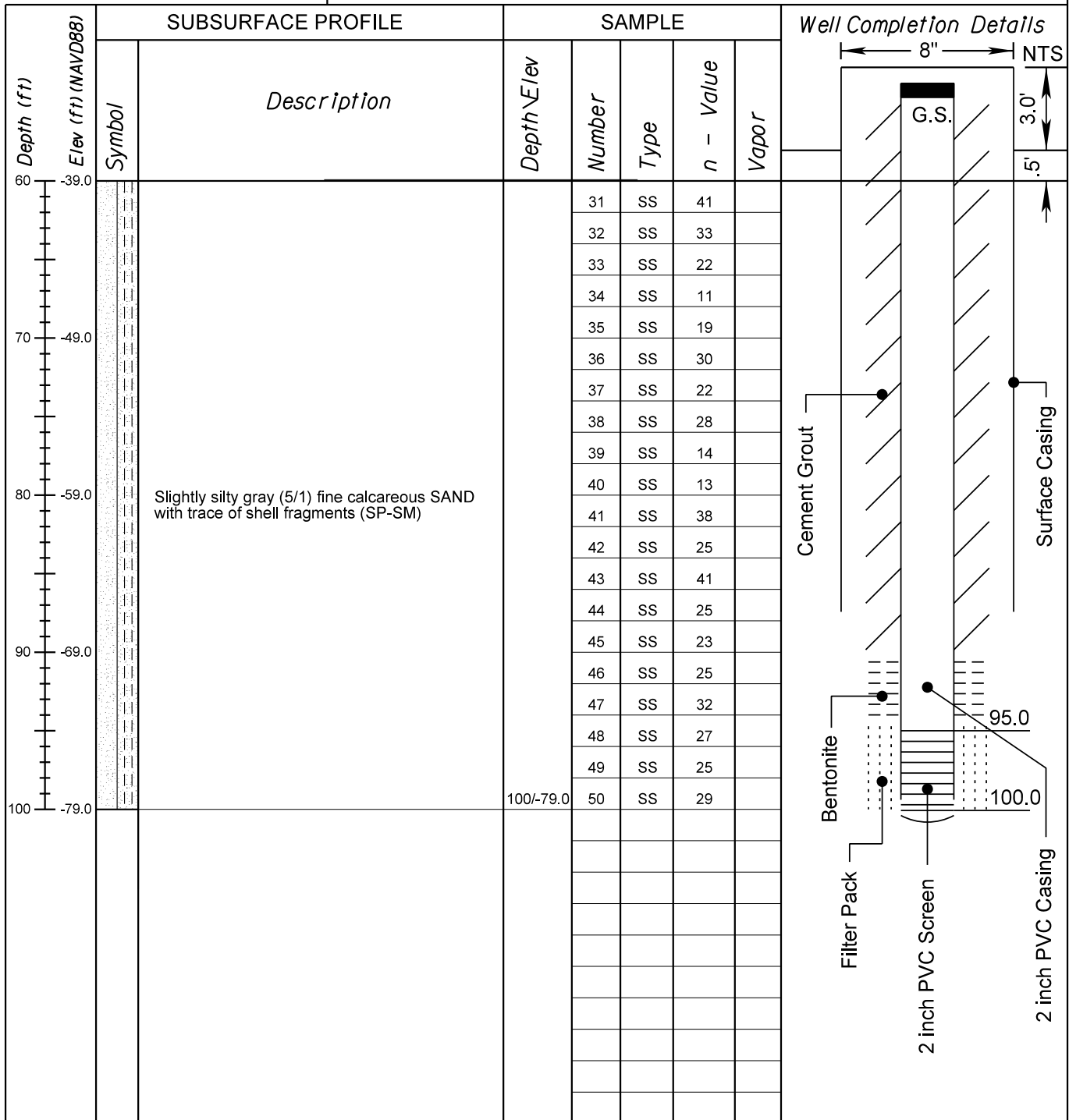
Well Number: MFEB9-GW1

Client Name: South Florida Water Management District

Project Name: J. W. Corbett Wildlife Management Area

Project Number: 060735 Logged By: Y. Delmas

City & State: West Palm Beach , Florida Attachment:



Drilled By: Centerline Drilling, inc. Hole Size: 6 inch diameter

Drilling Method: Bentonite Mud Rotary Datum: NAVD 1988 (Elevation estimated)

Drill Date: September, 2015 Sheet: 2 of 2