



SOUTH FLORIDA WATER MANAGEMENT DISTRICT

Rev. 1/16

Sensor: GW1 GW2 GW3 GW4	DB Hydro Station Names: OSF53_GW1 OSF53_GW2 OSF-53R (see note 1. below) OSF-112	DB Hydro Site Names: OSF53	Agency: WMD WMD WMD WMD	Last date of Field Work: 30-apr-18
---	---	--------------------------------------	---	--

Party Chief: Strickland	Field Book: MISC 7F	Pages 1,2&4	Prepared by: H. Ehmke
--------------------------------	----------------------------	------------------------	------------------------------

SITE SPECIFIC DATA

Site Benchmark: OS 129 (DF6745)	Benchmark Elevation (NAVD88) 60.935	Corpscon 6.0.1 Conversion Factor (NAVD88 to NGVD29) +1.050
---	---	--

Reference Elevation(s) (NAVD88): 62.71 GW1 62.63 GW2 61.99 GW3 (see note 1. below) 63.10 GW4	Existing Brass Tag Elevation (NGVD 29): 62.77 WOOLPERT 9 24 07 (see note 2. below) 63.68 WOOLPERT 9 24 07 None (new well) (see note 1. below) None (new well)	Calibration Port Elevation(s) (NAVD88): Not applicable Not applicable Not applicable Not applicable
--	---	---

Ground Elevation (NAVD88): 60.0 GW1 60.0 GW2 60.0 GW3 60.0 GW4	Concrete Pad Elevation (NAVD88): 60.09 GW1 60.11 GW2 59.94 NE, 59.94 NW, 59.91 SE, 59.93 SW GW3 60.19 NE, 60.21 NW, 60.19 SE, 60.91 SW GW4
--	--

GEOGRAPHIC DATA

Section 18		Township 27 South		Range 30 East	
Name	Latitude:	Longitude:	Northing (Y) NAD83	Easting (X) (NAD83)	(O) = Survey by Johnston Eng. Source: FDOT Net (FDOT = Florida Department of Transportation)
OS129 (DF6745) BM	28°08'24.917"	81°21'06.996"	1383859.64	542745.13 (O)	
OSF53_GW1	28°08'23.77901"	81°21'04.24622"	1383743.99	542990.92	
OSF53_GW2	28°08'23.72209"	81°21'04.24045"	1383738.24	542991.42	
OSF-53R	28°08'23.67725"	81°21'04.23494"	1383733.71	542991.90	
OSF-112	28°08'23.78147"	81°21'04.33034"	1383744.26	542983.39	

Notes: 1. Well OSF-53 was constructed in 1982 by the SFWMD to a depth of 980 feet. In January 2018 the well was back-filled to a depth of 300 feet by SFWMD and renamed OSF-53R.

2. A level line was run from NGS OS129 and OSF53 benchmark to verify the elevations on OSF53 and the wells at the site. The old NGVD 29 tagged elevations for GW1 reads 62.77 and the new NAVD88 elevation reads 62.71, a **0.06** of a foot differences. Using the field work from 30-apr-18 the corpscon conversion the old NGVD29 El. is 63.76.

NAD83 – North American Datum of 1983
NAVD88 – North American Vertical Datum of 1988
NGVD29- National Geodetic Vertical Datum of 1929

Corpscon 6.0.1 - A U.S. Army Corps of Engineers Engineering Research and Development Center Topographic Engineering Center Alexandria, Virginia Windows-based program to convert coordinates and elevations between datum's using *vertcon05.txt* and *vertcon05.05* files supplied by the U.S. Army Corps of Engineers South Atlantic Division, Jacksonville FL.

PICTURES (Aerial Overall Site)





Benchmark "OS129 (DF6745)"
Latitude: **28°08'24.95"**
Longitude: **81°21'07.00"**
El. **60.935** NAVD88



Benchmark "OSF-53"
Latitude: **28°08'23.96"**
Longitude: **81°21'04.84"**
El. **61.365** NAVD88

Well Site

Not to scale
(esri product)



SOUTH FLORIDA WATER MANAGEMENT DISTRICT

Rev. 1/16

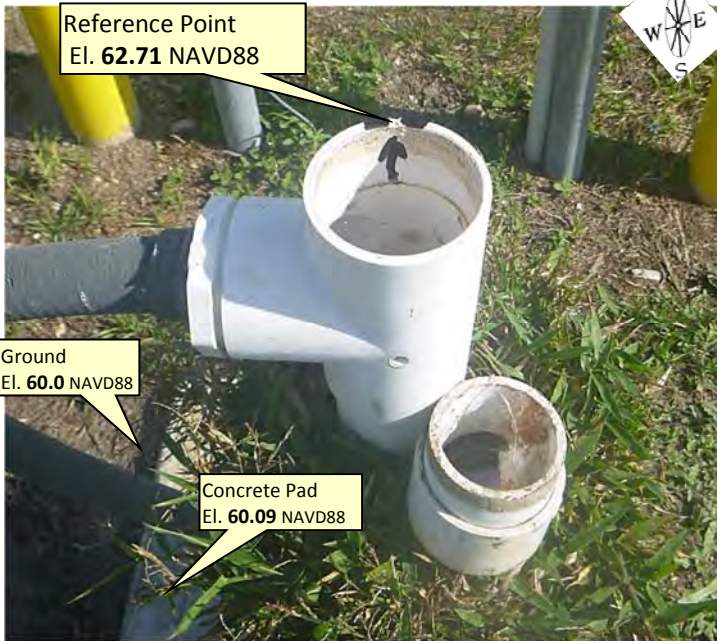
Overall Well Site



Looking Westerly (oblique not to scale) (24-apr-18)

OSF53_GW1 Well

OSF53_GW1 Reference Mark



Looking Northerly (oblique not to scale) (24-apr-18)

New NAVD88 Brass Tag Close-up



Old NAGD29 Brass Tag Close-up (to be removed)



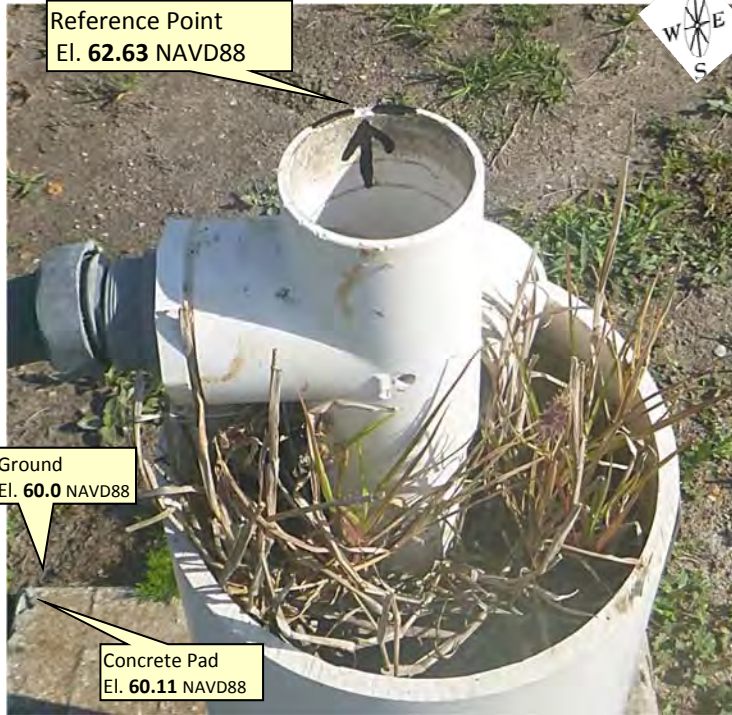


SOUTH FLORIDA WATER MANAGEMENT DISTRICT

Rev. 1/16

OSF53_GW2 Well

OSF53_GW2 Reference Mark



Looking Northerly (oblique not to scale) (24-apr-18)

New NAVD88 Brass Tag Close-up

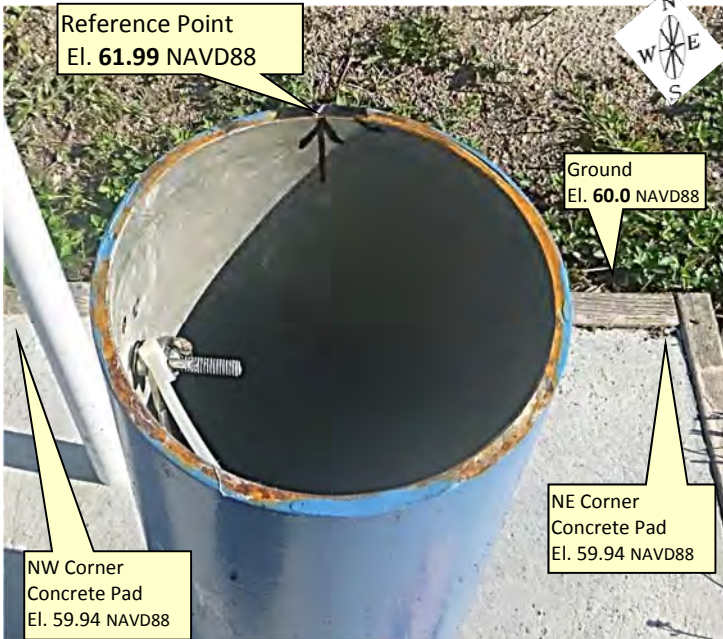


Old NAGD29 Brass Tag Close-up (to be removed)



OSF-53R Well

OSF-53R Reference Mark



Looking Northerly (oblique not to scale) (24-apr-18)

New NAVD88 Brass Tag Close-up



New Well, no previous brass tag



SOUTH FLORIDA WATER MANAGEMENT DISTRICT

Rev. 1/16

OSF-112 Well

OSF-112 Reference Mark



Looking Northerly (oblique not to scale) (24-apr-18)

New NAVD88 Brass Tag Close-up



New Well, no previous brass tag

RTU Box



Looking Southerly (oblique not to scale) (24-apr-18)



SOUTH FLORIDA WATER MANAGEMENT DISTRICT

Rev. 1/16



Looking Southerly (oblique not to scale) (24-apr-18)

The NGS Data Sheet

See file [dsdata.txt](#) for more information about the datasheet.

```

DATABASE = NGSIDB , PROGRAM = datasheet95, VERSION = 7.87.4.2
1      National Geodetic Survey,  Retrieval Date = OCTOBER 28, 2011
DF6745 *****
DF6745 DESIGNATION - OS 129
DF6745 PID - DF6745
DF6745 STATE/COUNTY- FL/OSCEOLA
DF6745 USGS QUAD - ST CLOUD SOUTH (1980)
DF6745
DF6745 *CURRENT SURVEY CONTROL
DF6745
DF6745* NAD 83(1986)- 28 08 18. (N) 081 21 06. (W) SCALED
DF6745* NAVD 88 - 18.573 (meters) 60.93 (feet) ADJUSTED
DF6745
DF6745 GEOID HEIGHT- -27.69 (meters) GEOID09
DF6745 DYNAMIC HT - 18.545 (meters) 60.84 (feet) COMP
DF6745 MODELED GRAV- 979,153.3 (mgal) NAVD 88
DF6745
DF6745 VERT ORDER - SECOND CLASS I
DF6745
DF6745.The horizontal coordinates were scaled from a topographic map and have
DF6745.an estimated accuracy of +/- 6 seconds.
DF6745
DF6745.The orthometric height was determined by differential leveling and
DF6745.adjusted in April 2004.
DF6745
DF6745.The geoid height was determined by GEOID09.
DF6745
DF6745.The dynamic height is computed by dividing the NAVD 88
DF6745.geopotential number by the normal gravity value computed on the
DF6745.Geodetic Reference System of 1980 (GRS 80) ellipsoid at 45
DF6745.degrees latitude (g = 980.6199 gals.).
DF6745
DF6745.The modeled gravity was interpolated from observed gravity values.
DF6745
DF6745; North East Units Estimated Accuracy
DF6745;SPC FL E - 421,590. 165,460. MT (+/- 180 meters Scaled)
DF6745
DF6745 SUPERSEDED SURVEY CONTROL
DF6745
DF6745.No superseded survey control is available for this station.
DF6745
DF6745_U.S. NATIONAL GRID SPATIAL ADDRESS: 17RMM654125(NAD 83)
DF6745_MARKER: DD = SURVEY DISK
DF6745_SETTING: 40 = SET IN A LARGE STRUCTURE WITH DEEP FOUNDATIONS
DF6745_SP_SET: WATER STRUCTURE
DF6745_STAMPING: SFWMD BM OS-129 1981
DF6745_MARK LOGO: USE
DF6745_MAGNETIC: N = NO MAGNETIC MATERIAL
DF6745_STABILITY: A = MOST RELIABLE AND EXPECTED TO HOLD
DF6745+STABILITY: POSITION/ELEVATION WELL
DF6745_SATELLITE: THE SITE LOCATION WAS REPORTED AS SUITABLE FOR

```

DF6745+SATELLITE: SATELLITE OBSERVATIONS - July 20, 2001

DF6745

DF6745	HISTORY	- Date	Condition	Report By
DF6745	HISTORY	- 1981	MONUMENTED	USE
DF6745	HISTORY	- 20010720	GOOD	FLDEP

DF6745

DF6745

STATION DESCRIPTION

DF6745

DF6745'DESCRIBED BY FL DEPT OF ENV PRO 2001 (JLM)

DF6745'THE MARK IS ABOUT 17.5 MI SOUTHWEST OF KISSIMMEE, IN SECTION 18,

DF6745'TOWNSHIP 27 SOUTH, RANGE

DF6745'30 EAST.

DF6745'

DF6745'TO REACH THE MARK FROM THE JUNCTION OF U.S. HIGHWAY 192 (VINE STREET)

DF6745'AND U.S. HIGHWAY

DF6745'17, 92 (JOHN YOUNG PARKWAY) IN KISSIMMEE, GO SOUTH ON U.S. HIGHWAY 17,

DF6745'92 FOR 3.5 MI TO THE

DF6745'JUNCTION OF PLEASANT HILL ROAD (COUNTY ROAD 531) ON THE LEFT, TURN

DF6745'LEFT ON PLEASANT HILL

DF6745'ROAD (COUNTY ROAD 531) AND GO SOUTH FOR 7.55 MI TO THE JUNCTION OF

DF6745'SOUTHPORT ROAD ON

DF6745'THE LEFT, TURN LEFT ON SOUTHPORT ROAD AND GO EAST FOR 6.0 MI TO THE

DF6745'END OF THE PAVEMENT

DF6745'AND A PRIVATE POSTED GATE, CONTINUE EAST ON THE SHELL ROAD FOR 0.5 MI

DF6745'TO A GATE,

DF6745'CONTINUE NORTHEAST ON STRUCTURE ROAD FOR 0.05 MI TO THE MARK ON THE

DF6745'MARK RIGHT, SET IN

DF6745'THE TOP OF THE SOUTHEAST STRUCTURE WALL ABOUT LEVEL WITH THE ROAD.

DF6745'

DF6745'LOCATED 9.5 FT SOUTH OF THE APPROXIMATE CENTERLINE OF THE STRUCTURE

DF6745'ROAD, 1.9 FT WEST

DF6745'OF A METAL GUARDRAIL AND 0.9 FT EAST OF A 4-FOOT TALL CHAINLINK FENCE

DF6745'

DF6745'

DF6745'

*** retrieval complete.

Elapsed Time = 00:00:02





SOUTH FLORIDA WATER MANAGEMENT DISTRICT

Rev. 4/01

COUNTY OSCEOLA	PROJECT	DESIGNATION Structure OSF-53	
SECTION 18	TOWNSHIP 27 SOUTH	RANGE 30 EAST	
GEOGRAPHIC INDEX OF QUAD			
Established by <u>KEITH AND SCHNARS</u> Recovered by <u>SET CLASS "C" MONUMENT WITH SFWMD BRASS DISK.</u>		NAME OF QUADRANGLE <u>ST. CLOUD SOUTH</u>	
SURVEYOR <u>B. MILLER (Keith and Schnars)</u> DATE <u>06/22/2006</u>		FIELD BOOK, 1156, pgs. 24	
HORIZONTAL DATUM: 1983 with 1999 correction, ZONE East			
VERTICAL DATUM: NGVD 1929 and NAVD 1988			
CONTROL ACCURACY: HORIZONTAL HAND-HELD GPS, 3rd Order VERTICAL			
STATE PLANE COORDINATES	X = 542949	Y = 1383747	EL. (NGVD 1929) 61.408' EL. (NAVD 1988) 60.365'
LATITUDE <u>28° 08' 23.8"</u>		LONGITUDE <u>81° 21' 04.7"</u>	
DESCRIPTION			
South Florida Water Management District brass disk set in concrete monument stamped OSF 53 / 2006			
The benchmark is located at the south side of Lake Tohopekaliga			
To reach the mark from the intersection of John Young Parkway and Pleasant Hill Rd. go south along Pleasant Hill Rd. a distance of 7.5 miles to the intersection of W. Southport Rd. Then go east along W. Southport Rd. a distance of 5.3 miles to an access road for structure S61. Then continue east along the Access road a distance of 0.6 miles to the mark. The mark is located 50+- east of the centerline of the south Lock gate and 27.5' south east of the south east corner of a block pump building.			
Notable Land marks:			



Pictures



The NGS Data Sheet

See file [dsdata.txt](#) for more information about the datasheet.

```

DATABASE = Sybase ,PROGRAM = datasheet, VERSION = 7.35
1 National Geodetic Survey, Retrieval Date = APRIL 28, 2006
DF6712 *****
DF6712 DESIGNATION - C 513
DF6712 PID - DF6712
DF6712 STATE/COUNTY- FL/OSCEOLA
DF6712 USGS QUAD - ST CLOUD SOUTH (1980)
DF6712
DF6712 *CURRENT SURVEY CONTROL
DF6712
DF6712 * NAD 83(1986)- 28 08 19. (N) 081 21 39. (W) SCALED
DF6712 * NAVD 88 - 18.462 (meters) 60.57 (feet) ADJUSTED
DF6712
DF6712 GEOID HEIGHT- -27.66 (meters) GEOID03
DF6712 DYNAMIC HT - 18.434 (meters) 60.48 (feet) COMP
DF6712 MODELED GRAV- 979,153.2 (mgal) NAVD 88
DF6712
DF6712 VERT ORDER - SECOND CLASS I
DF6712
DF6712 The horizontal coordinates were scaled from a topographic map and have
DF6712 an estimated accuracy of +/- 6 seconds.
DF6712
DF6712 The orthometric height was determined by differential leveling
DF6712 and adjusted by the National Geodetic Survey in April 2004..
DF6712
DF6712 The geoid height was determined by GEOID03.
DF6712
DF6712 The dynamic height is computed by dividing the NAVD 88
DF6712 geopotential number by the normal gravity value computed on the
DF6712 Geodetic Reference System of 1980 (GRS 80) ellipsoid at 45
DF6712 degrees latitude (g = 980.6199 gals.).
DF6712
DF6712 The modeled gravity was interpolated from observed gravity values.
DF6712
DF6712;
DF6712; SPC FL E - North East Units Estimated Accuracy
DF6712; 421,620. 164,560. MT (+/- 180 meters Scaled)
DF6712
DF6712 SUPERSEDED SURVEY CONTROL
DF6712 No superseded survey control is available for this station.
DF6712
DF6712 U.S. NATIONAL GRID SPATIAL ADDRESS: 17RMM645126(NAD 83)
DF6712 MARKER: DD = SURVEY DISK
DF6712 SETTING: 7 = SET IN TOP OF CONCRETE MONUMENT
DF6712 STAMPING: C 513 2001
DF6712 MARK LOGO: FLDEP
DF6712 PROJECTION: FLUSH
DF6712 MAGNETIC: M = MARKER EQUIPPED WITH BAR MAGNET
DF6712 STABILITY: C = MAY HOLD, BUT OF TYPE COMMONLY SUBJECT TO
DF6712 +STABILITY: SURFACE MOTION
DF6712 SATELLITE: THE SITE LOCATION WAS REPORTED AS SUITABLE FOR
DF6712 +SATELLITE: SATELLITE OBSERVATIONS - June 28, 2001
DF6712
DF6712 HISTORY - Date Condition Report By
DF6712 HISTORY - 20010628 MONUMENTED FLDEP
DF6712
DF6712 STATION DESCRIPTION
DF6712
DF6712 DESCRIBED BY FL DEPT OF ENV PRO 2001 (JLM)
DF6712 THE MARK IS ABOUT 17.5 MI SOUTHWEST OF KISSIMMEE, IN SECTION 13,
DF6712 TOWNSHIP 27 SOUTH, RANGE
DF6712 29 EAST.
DF6712
DF6712 TO REACH THE MARK FROM THE JUNCTION OF U.S. HIGHWAY 192 (VINE STREET)
DF6712 AND U.S. HIGHWAY
DF6712 17, 92 (JOHN YOUNG PARKWAY) IN KISSIMMEE, GO SOUTH ON U.S. HIGHWAY 17,
DF6712 92 FOR 3.5 MI TO THE
DF6712 JUNCTION OF PLEASANT HILL ROAD (COUNTY ROAD 531) ON THE LEFT, TURN
DF6712 LEFT ON PLEASANT HILL

```

DATASHEETS

DF6712' ROAD (COUNTY ROAD 531) AND GO SOUTH FOR 7.55 MI TO THE JUNCTION OF
DF6712' SOUTHPORT ROAD ON
DF6712' THE LEFT, TURN LEFT ON SOUTHPORT ROAD AND GO EAST FOR 5.5 MI TO THE
DF6712' MARK ON THE LEFT,
DF6712' SET IN THE TOP OF A ROUND CONCRETE MONUMENT FLUSH WITH THE GROUND AND
DF6712' ABOUT LEVEL
DF6712' WITH SOUTHPORT ROAD.
DF6712'
DF6712' LOCATED 44.0 FT SOUTHWEST OF THE ENTRANCE TO SOUTHPORT PARK AT 2001,
DF6712' 43.3 FT
DF6712' NORTHWEST OF THE CENTERLINE OF SOUTHPORT ROAD, 13.0 FT NORTH-NORTHWEST
DF6712' OF THE WEST
DF6712' END OF A SOUTHPORT PARK SIGN, 7.6 FT NORTHWEST OF A METAL LIGHT POLE,
DF6712' 3.0 FT WEST OF A
DF6712' 5-FOOT TALL CHAINLINK FENCE AND 1.0 FT SOUTHEAST OF A FENCE AND A
DF6712' CARSONITE WITNESS POST.
DF6712'
DF6712' NOTE A MAGNET WAS IMBEDDED IN THE MONUMENT ON THE SOUTH SIDE.
DF6712'
DF6712'
DF6712'

*** retrieval complete.
Elapsed Time = 00:00:00



SEC	18	TWP	27	RGE	30
ESTABLISH NAVD 88 EL @ WELLS					
OSF 53 GW1, GW2 & R, & OSF 112 @ S-61					
STA	+	HI	-	EL	BM EL
BM	5.09	66.02			60.93 NAVD 88
OSF 53 GW1			3.31	62.71	
OSF 53 GW2			3.39	62.63	
OSF 53R			4.03	61.99	
OSF 112			2.92	63.13	
OSF 53 GW1 CONC			5.93	60.09	
OSF 53 GW2 "			5.91	60.11	
OSF 53R CONC NE			6.08	59.94	
" SE			6.11	59.91	
" SW			6.09	59.93	
" NW			6.08	59.94	
OSF 112 CONC NE			5.83	60.19	
" SE			5.83	60.19	
" SW			5.83	60.19	
" NW			5.81	60.21	
GRND			6.0	60.02	
BM	5.09			60.93	60.93 NAVD 88

☐ STRICKLAND
Ø WISE

COMMENTS

BM OS 129 1981 COE BRASS DISK FD GOOD COND

OSF 53 GW1 REF "V" NOTCH N. SIDE ATOP of 2" PVC T

OSF 53 GW2 " " " " "

OSF 53R REF " " " " " 6" STEEL PIPE

OSF 112 REF " " " " " 4" PVC

OSF 53 GW1 CONC PAD 22"x22"

OSF 53 GW2 " " " "

OSF 53R

" " " " " " " NE 28" x 28"

" " " " " " " SE " "

" " " " " " " SW " "

" " " " " " " NW " "

OSF 112

" " " " " " " NE 28" x 28"

" " " " " " " SE " "

" " " " " " " SW " "

" " " " " " " NW " "

GROUNDS @ SITE

BM OS 129 AS ABOVE EL AS PER NGS DATA SHEET

SEC

18

TWP

27

RGE

30

SKETCH FOR PAGE-1

OSF 53 GW 1 & 2

OSF 53 R

OSF 112

05129
1981
A

STACKLAND
WISE

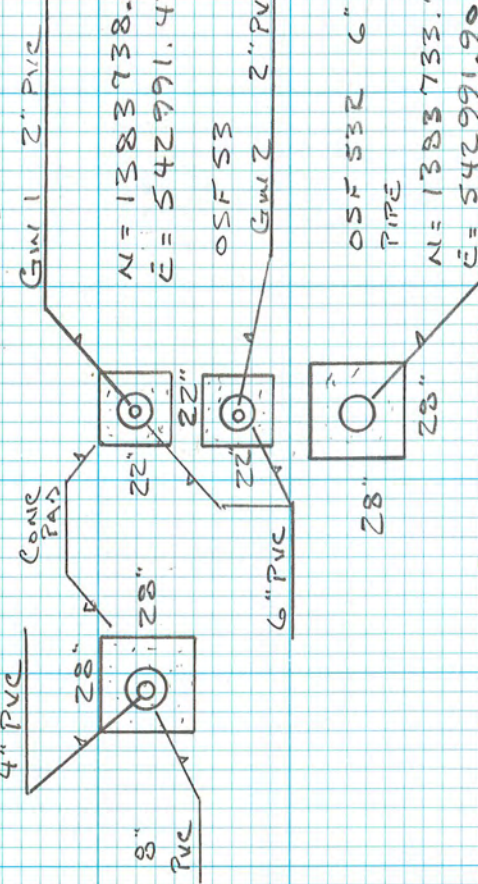
N = 1383744.26
E = 542983.39
OSF 112
4" PVC

N = 1383743.99
E = 542990.92
OSF 53
GW 1 2" PVC

N = 1383738.24
E = 542991.42
OSF 53
GW 2 2" PVC

OSF 53 R
PIPE
N = 1383733.71
E = 542991.90

M-61 BOAT LOCK



SEC 18 TWP 27 RGE 30

RECHECK NAVD88 EL @ OSF 53 GW1
GW2 & R & OSF 112 @ S-61
ALSO CHECK BETWEEN OS129 & OSF 53
2006 BM'S

STA	+	HI	-	EL	BM EL
BM	5.40	66.33			60.93 NAVD88
BM			5.97	60.36	60.365 NAVD88
BM	5.76	66.12			
BM			5.19	60.93	60.93
BM	5.40	60.33			60.93
OSF 53 GW1			3.62	62.71	
" GW2			3.70	62.63	
" S3R			4.34	61.99	
OSF 112			3.23	63.10	
BM OSF 53 2006			5.965	60.365	60.365 NAVD88

OPOS OS129 1981

STRICKLAND'S
WISE

OKEE UNIT 8425 HI=2M

START = 10:37

END = 1:48 WIND BLEW UNIT OUT OF PLUMB

5-1-18 START = 9:07AM

HI = 1.5M

END = 1:18 PM

BM OS129 1981 CDC BRASS DISK SEE PGS 1-2

BM OSF 53 2006 SFWARD BRASS DISK FD GOOD COND
3.4' E of THE EAST MOST CONC BOLLARDS & 0.8' BELOW
GROUND NO METAL, PLACED LARGE BOLT BESIDE BM

BM OS129 1981 AS ABOVE NGS DATA SHEET

BM OS129 1981 " "

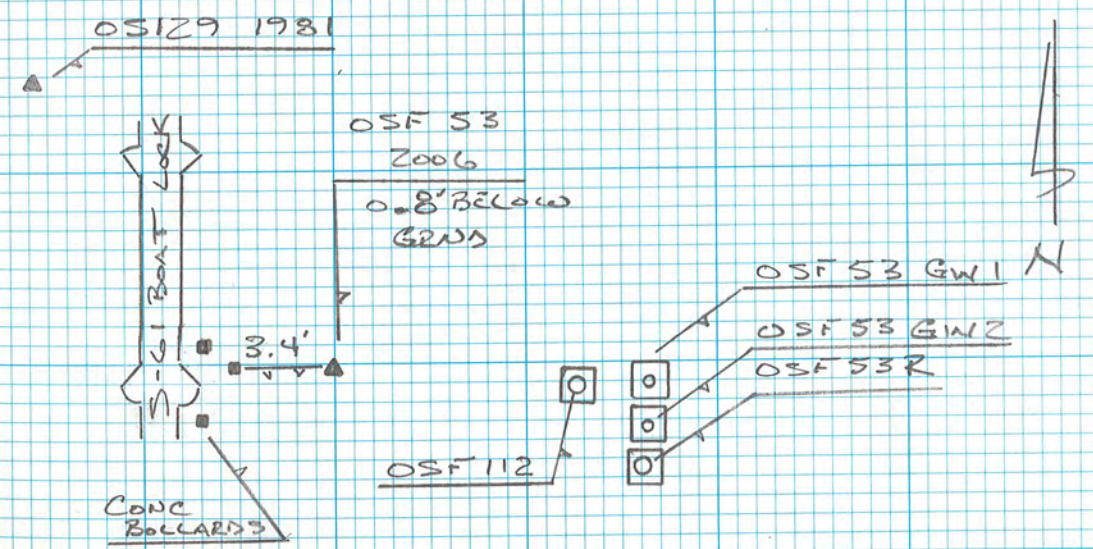
OSF 53 GW1 REF "V" NOTCH 2" PVC T SEE PGS
1-2 THIS BOOK

OSF 53 GW2 " " " " " "

OSF 53R " " " 6" STEEL PIPE

OSF 112 " " " 4" PVC "

BM OSF 53 2006 AS ABOVE.



Office

Project

25 April 2018

INPUT

State Plane, flhpgn - Florida HPGN
0901 - Florida East, U.S. Feet
Vertical - NAVD88, U.S. Feet

OUTPUT

Geographic, flhpgn - Florida HPGN
Vertical - NGVD29 (Custom), U.S. Feet

OSF-112

1/4

Northing/Y: 1383744.26
Easting/X: 542983.39
Elevation/Z: 0
Convergence: -0 09 56.29781
Scale Factor: 0.999955860
Combined Factor: 0.999960204

Latitude: 28 08 23.78147
Longitude: 81 21 04.33034
Elevation/Z: 1.050

OSF-53 GW1

2/4

Northing/Y: 1383743.99
Easting/X: 542990.92
Elevation/Z: 0
Convergence: -0 09 56.25812
Scale Factor: 0.999955858
Combined Factor: 0.999960202

Latitude: 28 08 23.77901
Longitude: 81 21 04.24622
Elevation/Z: 1.050

OSF-53 GW2

3/4

Northing/Y: 1383738.24
Easting/X: 542991.42
Elevation/Z: 0
Convergence: -0 09 56.25509
Scale Factor: 0.999955858
Combined Factor: 0.999960202

Latitude: 28 08 23.72209
Longitude: 81 21 04.24045
Elevation/Z: 1.050

OSF-53 R

4/4

Northing/Y: 1383733.71
Easting/X: 542991.90
Elevation/Z: 0
Convergence: -0 09 56.25225
Scale Factor: 0.999955858
Combined Factor: 0.999960202

Latitude: 28 08 23.67725
Longitude: 81 21 04.23494
Elevation/Z: 1.050

Remark:

Corpscon v6.0.1, U.S. Army Corps of Engineers

DBHYDRO | by station

STATION INFORMATION

Station	OSF-53
Site	OSF53
Type	WELL
Latitude (ddmmss.sss)	280823.692
Longitude (ddmmss.sss)	812104.238
X Coord (ft) NAD83	542992.716
Y Coord (ft) NAD83	1383737.968
County	Osceola
Basin	LAKE CYPRESS
Section	18
Township	27
Range	30
Map	Launch Map
Well Info	Info
Description	OSF53 SURFACE/GROUNDWATER MONITORING SITE, DEEP WELL (WELL 3)
Notes	
Nearby Stations	Nearby Stations
Attachments	Show Attachments

Query returned 1 station record(s).

Get Sample Data

Get Time Series Data

[DBHYDRO Menu](#) | [DBHYDRO Home](#) | [SFWMD Home](#) | [User's Guide](#) | [What's New](#) | [FAQ](#) | [Comments?](#) | [Login](#)

[Privacy Policy](#) | [Disclaimer](#) | [Accessibility](#) | [User Survey](#) | [Redline](#) | [Contact Us](#) | [Locations](#) | [Careers](#)

SFWMD Headquarters: 3301 Gun Club Road, West Palm Beach, Florida 33406
561-686-8800 | 1-800-432-2045 (Florida Only)

DBHYDRO | by station

STATION INFORMATION

Station	OSF53_GW1
Site	OSF53
Type	WELL
Latitude (ddmmss.sss)	280823.79
Longitude (ddmmss.sss)	812104.24
X Coord (ft) NAD83	542992.566
Y Coord (ft) NAD83	1383747.865
County	Osceola
Basin	LAKE CYPRESS
Section	18
Township	27
Range	30
Map	Launch Map
Well Info	Info
Description	OSF53 SURFACE/GROUNDWATER MONITORING SITE, SHALLOW WELL 1
Notes	
Nearby Stations	Nearby Stations
Attachments	Show Attachments

Query returned 1 station record(s).

[Get Time Series Data](#)

DBHYDRO | by station

STATION INFORMATION

Station	OSF53_GW2
Site	OSF53
Type	WELL
Latitude (ddmmss.sss)	280823.731
Longitude (ddmmss.sss)	812104.242
X Coord (ft) NAD83	542992.369
Y Coord (ft) NAD83	1383741.907
County	Osceola
Basin	LAKE CYPRESS
Section	18
Township	27
Range	30
Map	Launch Map
Well Info	Info
Description	OSF53 SURFACE/GROUNDWATER MONITORING SITE, SHALLOW WELL 2
Notes	
Nearby Stations	Nearby Stations
Attachments	Show Attachments

Query returned 1 station record(s).

[Get Time Series Data](#)

DBHYDRO | by station

STATION INFORMATION

Station	OSF-53R
Site	OSF53
Type	SUBSTATION
Latitude (ddmmss.sss)	280823.692
Longitude (ddmmss.sss)	812104.238
X Coord (ft) NAD83	542992.716
Y Coord (ft) NAD83	1383737.968
County	Osceola
Basin	LAKE CYPRESS
Section	18
Township	27
Range	30
Map	Launch Map
Well Info	Info
Description	Open (170 - 300 ft bls)
Notes	
Nearby Stations	Nearby Stations
Attachments	None Available

Query returned 1 station record(s).

DBHYDRO | by station

STATION INFORMATION

Station	OSF-112
Site	
Type	WELL
Latitude (ddmmss.sss)	280823.794
Longitude (ddmmss.sss)	812104.36
X Coord (ft) NAD83	542981.824
Y Coord (ft) NAD83	1383748.3
County	Osceola
Basin	LAKE CYPRESS
Section	18
Township	27
Range	30
Map	Launch Map
Well Info	Info
Description	CONTINUOUS COREHOLE AND APPZ MONITOR WELL @S61 LOCK
Notes	
Nearby Stations	Nearby Stations
Attachments	Show Attachments

Query returned 1 station record(s).

Get Sample Data

REGISTRATION WORKSHEET - OSF53 Survey Registration

Site Name: **OSF53** Today's Date: **5/9/2018** Type Recorder: _____
 Activity: **Survey Registration** Effective Date: _____ Start Date of Data : _____
 Customer: **C. Gomez** Bus. Area: **SCADA** Agency: **SFWMD**
 Project Manager: _____ Bus. Area: **InfrStr.Mgt/Survey** Agency: **SFWMD**
 Project Name: **OSF53** Legal Mandate: _____
 Site Parameters: _____

Short Common Name / Description: _____

Proj. Mgr. Notes: Located just South of S-61 (Lk. Toho - West). Wells OSF-112 (GW4) is NEW. OSF-53R (GW3) was backfilled to 300' +/-.

Site Directions: From Pleasant Hill Rd and Southport Rd, go East on Southport Rd. to S-61 at Lake Toho. Wellsite located just south of S-61.

Site Address (if any): _____ Lock type or combination: **Abloy S**
 Transportation: **Std** Structure Type: _____
 Recorder Location/Purpose: _____
 Configuration table attached: _____

SURVEY INFORMATION

B.M. Elevation: **60.935ft** B.M. Year: **1981** Stamp: **SFWMD OS 129 BM 1981**
 Agency: **SFWMD** Type: **BRASS** Datum: **NAVD 88**

Benchmark Location/ Description: Set in Concrete Structure (S-61)

COMMUNICATIONS INFORMATION

Communication: _____ Loggernet Server: _____
 Tower #1: _____ Communication Type #1: _____
 Tower #2: _____ Communication Type #2: _____
 RTU Address: _____

WELL INFORMATION

Sensor	DBHydro Station	Ref Elev	Elev Date	Top of Well	Bottom of Well	Ground Elev	Benchmark Elev	Benchmark Datum	Ref Elevation Location
GW1	OSF53_GW1	62.71ft	4/24/2018	62.71ft		60.0ft	60.935ft	NAVD 88	Mark on Rim of PVC Well.. Denoted by Brass Tag.
GW2	OSF53_GW2	62.63ft	4/24/2018	62.63ft		60.0ft	60.935ft	NAVD 88	Mark on Rim of PVC Well.. Denoted by Brass Tag.
GW3	OSF-53R	61.99ft	4/24/2018	61.99ft		60.0ft	60.935ft	NAVD 88	Mark on Rim of Metal Pipe (Well) Denoted by Brass Tag.
GW4	OSF-112	63.10ft	4/24/2018	63.10ft		60.0ft	60.935ft	NAVD 88	Mark on Rim of PVC Well Inside Casing.. Denoted by Brass Tag.

Sensor	GW Sensor Location Offset	Meas Pt Elevation	GW Land Elevation	Depth of Well	Type of Well	Top of Monitored Interval	Base of Monitored Interval	Parameter Transmitted							
GW1															
GW2															
GW3															
GW4															

COORDINATE INFORMATION

Item/Parm	Lat	Long	X-Coord	Y-Coord	Sec	Township	Range	Quad	Basin	County	Description
GW1	28 08 23.7	81 21 04.2	542990.92	1383744	18	27	30	St. Cloud South		Osceola	
GW2	28 08 23.7	81 21 04.2	542991.42	1383738	18	27	30	St. Cloud South		Osceola	
GW3	28 08 23.6	81 21 04.2	542991.9	1383734	18	27	30	St. Cloud South		Osceola	
GW4	28 08 23.7	81 21 04.3	542983.39	1383744	18	27	30	St. Cloud South		Osceola	

From: [Gomez, Carlos](#)
To: [Ehmke, Howard](#)
Cc: [Wise, Michael](#); [Horan, Michael](#); [Fox, Martha](#); [Krupa, Steven](#); [Richardson, Emily](#); [O'Brien, Michael](#); [Berger, Francois](#); [Lindstrom, Linda](#); [Strickland, James](#)
Subject: RE: OSF53, OSF112, OSF110 and OSF111
Date: Wednesday, May 02, 2018 9:54:05 AM

Howard,

The information below is correct, OSF-112 along with the other three wells will be connected to SCADA RTU OSF53 once we re-install the site.

The assignment of the GW1-GW4 for the site will follow the note from Linda Lindstrom below.

Regards,

Carlos Gomez x4729
Senior Electronics Specialist
SCADA Design and Installation
Cgomez@sfwmd.gov
Cell phone: 561-386-0976

From: Berger, Francois
Sent: Wednesday, May 2, 2018 8:35 AM
To: Gomez, Carlos <cgomez@sfwmd.gov>
Subject: FW: OSF53, OSF112, OSF110 and OSF111

François Berger
Electronics Supervisor SCADA Design & Installation
SCADA Section, Infrastructure Management Bureau South Florida Water Management District
Field Operation Center 8894 Belvedere Road West Palm beach FL 33411-3636
Tel # (561) 753-2400, EXT 4787 Cell # 561-248-6109 frberger@sfwmd.gov

From: Ehmke, Howard
Sent: Wednesday, May 02, 2018 7:41 AM
To: Berger, Francois <frberger@sfwmd.gov>
Cc: Wise, Michael <mwise@sfwmd.gov>; Horan, Michael <mhoran@sfwmd.gov>; Fox, Martha <mfox@sfwmd.gov>; Krupa, Steven <skrupa@sfwmd.gov>; Richardson, Emily <ehopkins@sfwmd.gov>; O'Brien, Michael <mobrien@sfwmd.gov>; Lindstrom, Linda <llindst@sfwmd.gov>; Strickland, James <jstrickl@sfwmd.gov>
Subject: RE: OSF53, OSF112, OSF110 and OSF111

Francois,

Can you confirm the designation on OS112.

Thank you

Howard Ehmke PSM

South Florida Water Management District
3301 Gun Club Road
West Palm Beach, Fl. 33460
Phone 561.682.2978
hehmke@sfwmd.gov

From: Lindstrom, Linda
Sent: Monday, April 30, 2018 7:52 AM
To: Ehmke, Howard <hehmke@sfwmd.gov>; Strickland, James <jstrickl@sfwmd.gov>
Cc: Wise, Michael <mwise@sfwmd.gov>; Horan, Michael <mhoran@sfwmd.gov>; Fox, Martha <mfox@sfwmd.gov>; Krupa, Steven <skrupa@sfwmd.gov>; Richardson, Emily <ehopkins@sfwmd.gov>; O'Brien, Michael <mobrien@sfwmd.gov>; Berger, Francois <frberger@sfwmd.gov>
Subject: RE: OSF53, OSF112, OSF110 and OSF111

Good Morning Howard,

I took a look at the survey attachments and have the following corrections:

Site Name – **OSF53**

<u>RTU Station Names</u>	<u>DBHydro Station Names</u> (to go on brass tags)
OSF53 GW1	OSF53_GW1
OSF53 GW2	OSF53_GW2
OSF53 GW3	OSF-53R (re-constructed the old OSF-53)
OSF53 GW4???	OSF-112

I'm assuming all 4 wells will be reconnected to the existing RTU OSF53 – Francois is copied to get verification.

Site Name – **DESERET**

<u>RTU Station Names</u> (SCADA to decide tags)	<u>DBHydro Station Names</u> (to eventually go on brass tags)
GW1??	OSF-110 (Upper Floridan Monitor Well)
GW2??	OSS-111 (Surficial Monitor Well-misnamed)
OSF-111 in report)	
GW3??	OSF-111 (Lower Floridan Monitor Well)
currently under construction)	

The aerial map on page 1 of the report – has the well names switched. The more northern well is **OSS-111** (the surficial monitor well) and the southern well is OSF-110.

Also see instruction corrections in red below

FYI – the site is covered with well drilling equipment, tanks, pipes and hoses. The OSS-111 station is right next to the drill rig.

Emily is up there this week – so she can address any questions and verify the information.

Thanks!

Linda

From: Ehmke, Howard

Sent: Monday, April 30, 2018 6:28 AM

To: Strickland, James <jstrickl@sfwmd.gov>

Cc: Wise, Michael <mwise@sfwmd.gov>; Horan, Michael <mhoran@sfwmd.gov>; Fox, Martha <mfox@sfwmd.gov>; Krupa, Steven <skrupa@sfwmd.gov>; Richardson, Emily <ehopkins@sfwmd.gov>; Lindstrom, Linda <llindst@sfwmd.gov>; O'Brien, Michael <mobrien@sfwmd.gov>

Subject: OSF53, OSF112, OSF110 and OSF111

Ned,

Mike Horan will be out for the next couple of days. He asked me to send you work.

OSF53 & OSF112 (at S-61)- *see attachment OSFOSF112 24-apr-18*

1. Run a level line from OS129 (DF6745) to OSF53 and back.
2. Run a level line to from OSF53 to the wells.
3. Verify the reference elevations for the four wells.
4. Complete an OPUS on BM's for OS129.
5. Compile the data in a Field Book.
 - a. Previous field notes MISC 7F pages 1 and 2
6. Take pictures as required.

OSF110 & OSF111 (*see attachment OSF110 Well Site 07-aug-17r221*)

1. **Re-stamp** the benchmark OSF110.
 - a. The current stamping is "OSF 111 2017" re-stamp it to "**OSF110 2017.**"
 - b. If the new well head(s) are on OSF 111(**should be OSS-111**) or OSF 110 shot the reference elevation.
 - c. Establish a horizontal value on the benchmark.
 - d. Check the other well (OSF111-**should be OSS111**) if there is a disk on that well establish an elevation.
 - e. Compile the data in a Field Book.
 - i. Previous Field notes in MISC 7E pages 1 thru 3.
 - f. Complete an OPUS on BM's for W577 (DB6218).
 - g. Take Pictures as required.

Questions please call or return this e-mail.

Thank you

Howard Elmke PSM

South Florida Water Management District

3301 Gun Club Road

West Palm Beach, Fl. 33460

Phone 561.682.2978

ehmke@sfwmd.gov