

8890 Oldridge Lane
Gulf Breeze, FL 32561
Mobile: 910-407-7333
Fax: 407-370-4129

rob@mbaker.com
www.mbaker.com

Licensed and Insured

COMPANY: RMBAKER LLC
COLLARWELL ID: OSF-22
FIELD: LAKE JOEL
COUNTRY: USA

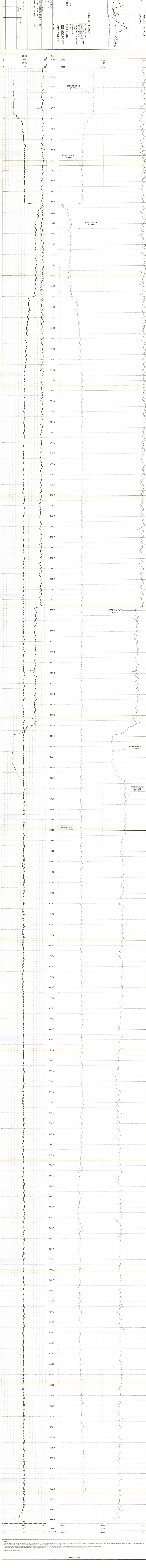
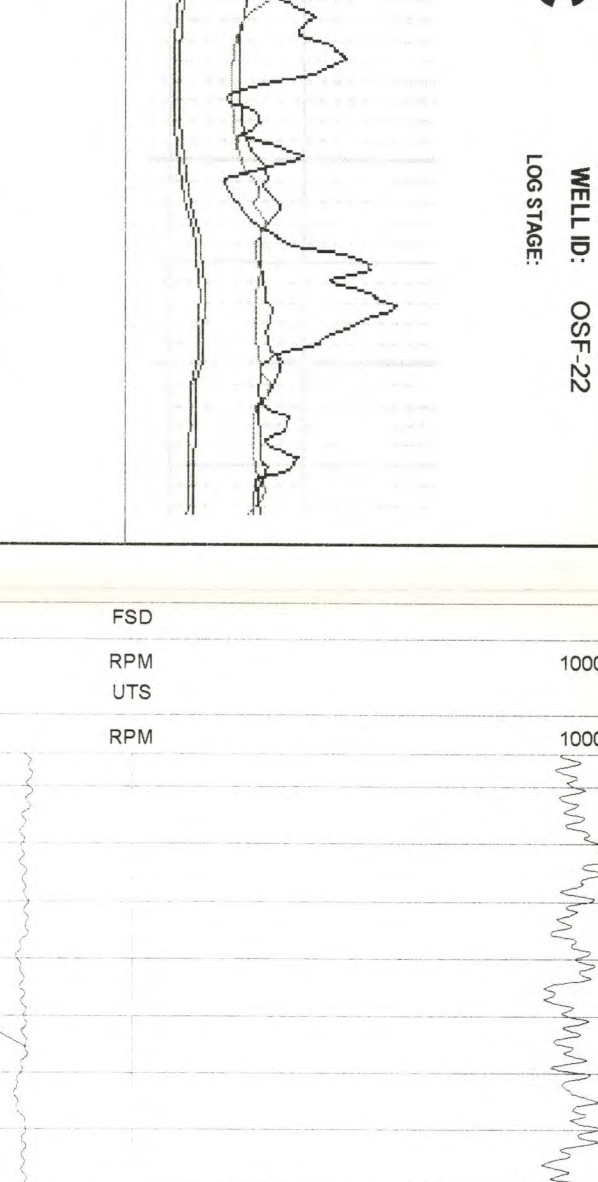
LOCATION: STATE: FLORIDA

ALL SERVICES
MAMA
DETAILED LOGS
PERMITS
SCHEMATIC
DRAWINGS
CONSTRUCTION
COORDINATORS

CO: RMBAKER LLC
WELL: OSF-22
FLD: LAKE JOEL
CTY: OSCEOLA
STE: FLORIDA

PERMANENT DATA TOOL PLACEMENT ABOVE GRADE
LOCATIONS FROM SURROUNDING AREA

DATE: 12/20/11
REVISION: 1
LOG ID: 796
DEPTH (FEET): 796
DEPTH (METERS): 242.6



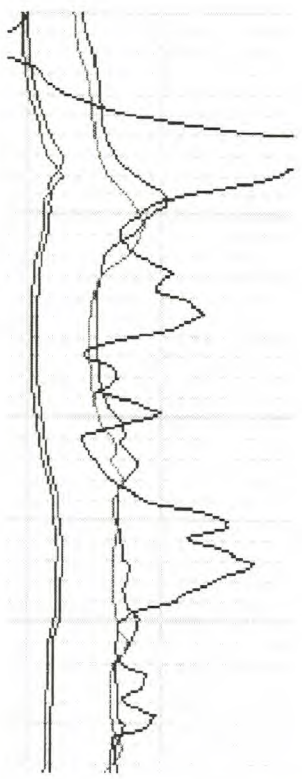
NOTES:
While our work has been based on the performance of these measurements and observations, in accordance with methods/protocols of the general customer, RMBAKER LLC can make no representations, warranties, or guarantees with respect to any data or conditions that may exist which may be beyond the detection capabilities of the methods/protocols used, or that may extend beyond the area and depth of the survey.
The accuracy of all logs shall be based on the conditions as they exist at the time of the data and observations, and the accuracy of the logs shall be representative of subsurface conditions at other locations and times.
If, at any time, different subsurface conditions from those observed are determined to be present, we must be advised and allowed to revise our observations if necessary.
Certificate of Authorization 028 038

END OF LOG

8600 Oldbridge Lane
 Orlando, FL 32819
 mobile ph 407-733-8958
 fax 407-370-4129

rob@rmbaker.com
 www.rmbaker.com

Licensed and Insured



COMPANY: RMBAKER LLC
 COLLAR/WELL ID: OSF-22
 FIELD: LAKE JOEL
 COUNTRY: USA

STATE: FLORIDA
 LOCATION:

CO: RMBAKER LLC
 WELL: OSF-22
 FLD: LAKE JOEL
 CTY: OSCEOLA
 STE: FLORIDA

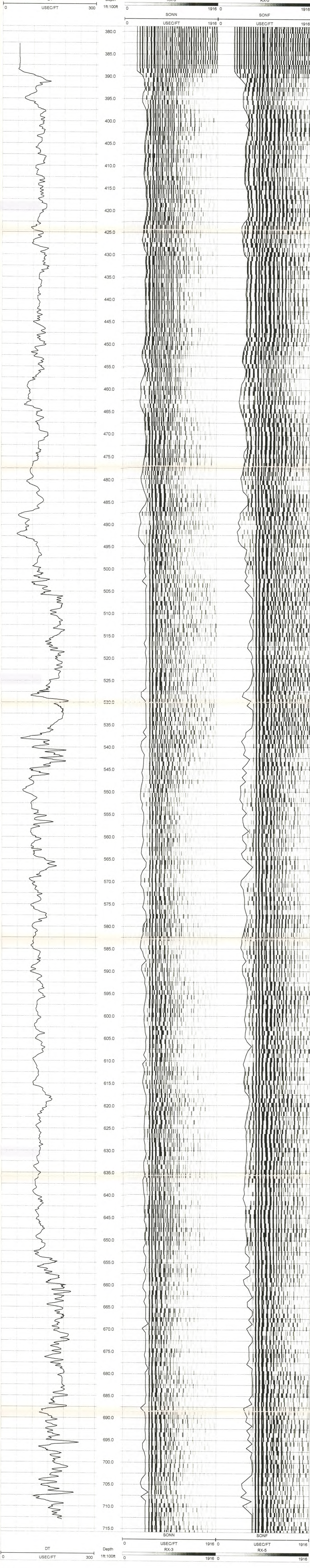
ALL SERVICES:
 CALIPER AND GAMMA
 DATA INDICATION
 ELECTRIC LOG
 FLUID TEMP AND COND
 SPONC
 SONN
 SONF
 VIDEO

SEC: 30 TWP: 25S R.R.: 32E
 PERMANENT DATUM: TCC 13-INCHES ABOVE GRADE ELEVATION:
 LOG MEAS. FROM: GROUND SURFACE

COORDINATES:
 0810930.00
 281714.00

DRILLING MEAS. FROM:

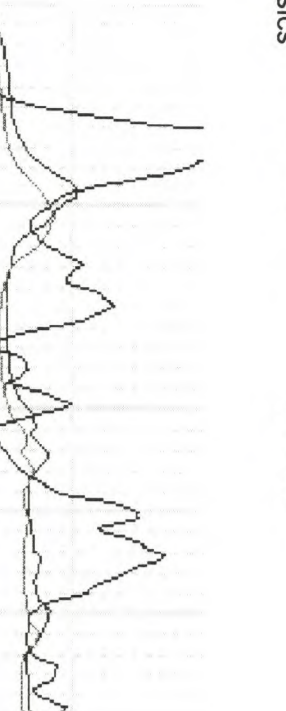
DATE	4/29/2011	TYPE FLUID IN HOLE	WATER
RUN NO.	1	SALINITY	
TYPE LOG	SONN, LOG	DENSITY	
DEPTH/BELLER	750	LEVEL	
DEPTH LOGGER	758	MAX REC. TEMP.	
BENT LOGGED INTERVAL		LOGGING SPEED (FT/MIN)	35
TOP LOGGED INTERVAL		LOGGING DIRECTION	UP
DRILLER		PUMPING RATE (GPM)	
RECORDED BY	RMB		
WITNESSED BY			
CASING RECORD			
RUN NO.	1	FROM	TO
DATE	4/29/2011	DEPTH	DEPTH
		750	300



NOTES:
 While due care has been exercised in the performance of these measurements and observations, in accordance with methodologies utilized by the general practice, RMBAKER LLC can make no representations, warranties, or guarantees with respect to latent or concealed conditions that may exist, which may be beyond the detection capabilities of the methodologies used, or that may extend beyond the areas and depths surveyed.
 The geophysical well logs show subsurface conditions as they existed at the dates and locations shown, and it is not warranted that they are representative of subsurface conditions at other locations and times.
 If, at any time, different subsurface conditions from those observed are determined to be present, we must be advised and allowed to review our observations if necessary.
 Certificate of Authorization GB 458
 END OF LOG

8600 Oldbridge Lane
Orlando, FL 32819
mobile ph# 407-733-8958
fax 407-370-4129

rob@mbaker.com
www.mbaker.com



COMPANY: RMBAKER LLC
COLLAR/WELL ID: OSF-22
FIELD: LAKE JOEL
COUNTRY: USA
STATE: FLORIDA

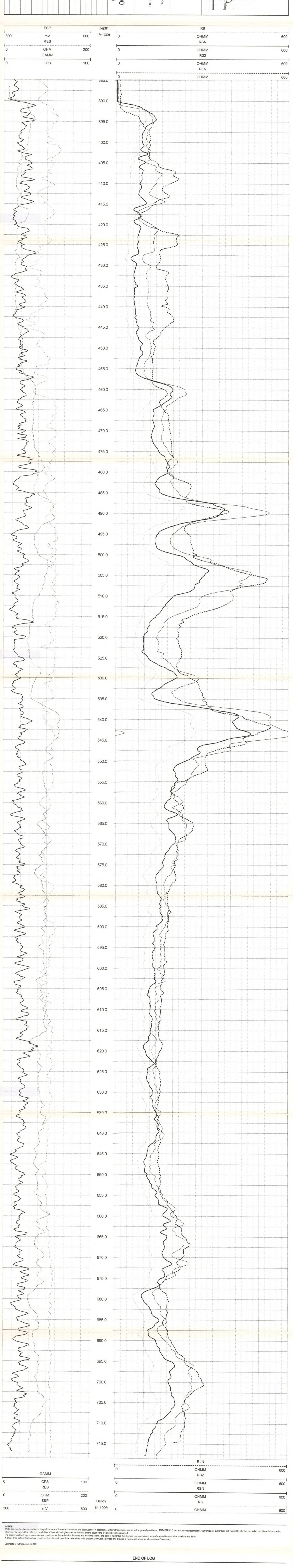
LOCATION:
ALL SERVICES:
LITHOLOGY AND STRATIGRAPHY
ELECTRICAL LOG
FLUID TEMP AND COND
SONIC
FLOWMETER
VIDEO

CO: RMBAKER LLC
WELL: OSF-22
FLD: LAKE JOEL
CTY: OSCEOLA
STE: FLORIDA

PERMANENT DATUM: TOC 13-INCHES ABOVE GRADE
ELEVATION:
COORDINATES:
0810930.00
281714.00

LOG MEAS FROM: GROUND SURFACE
DRILLING MEAS FROM:

DATE	TIME	TYPE	DEPTH	WATER
4/29/2011	1	TYPE: FLUID IN LOG		
RUN NO	1	SALINITY		
DEPTH-DRILLER	750	DENSITY		
DEPTH-LOGGER	738	MAX. REC. TEMP		
BHMT LOGGED INTERVAL		LOGGING SPEED (FT/MIN)	35	
TOP LOGGED INTERVAL		TROUBLE DIRECTION	UP	
DRILLER		PUMPING RATE (GPM)		
RECORDED BY		RHM		
WITNESSED BY				
IRON		CASING RECORD		
NO		SIZE		
HTF		WT		
7.875		FROM	0	390
1		TO	750	390



NOTES:
While due care has been exercised in the performance of these measurements and observations, in accordance with methodologies utilized by the general practitioner, RMBAKER LLC can make no representations, warranties, or guarantees with respect to latent or concealed conditions that may exist, which may be beyond the detection capabilities of the methodologies used, or that may extend beyond the area and depths surveyed.
The geophysical well logs show subsurface conditions as they existed at the dates and locations shown, and it is not warranted that they are representative of subsurface conditions at other locations and times.
If, at any time, different subsurface conditions from those observed are determined to be present, we must be advised and allowed to review and revise our observations if necessary.

Certificate of Authorization GB 458

END OF LOG

8600 Oxbow Ridge Lane
Orlando, FL 32819
Mobile ph 407-723-8668
fax 407-370-4129

rob@rmbaker.com
www.rmbaker.com



Licensee and Invented

COMPANY: RMBAKER LLC
COLLARWELL ID: OSF-22
FIELD: LAKE JOEL
LOCATION: LAKE JOEL
COUNTRY: USA
STATE: FLORIDA

ALL SERVICES: TAMPA
FIELD TECH: LAKE JOEL
DUAL INDUCTION: LAKE JOEL
SONG: LAKE JOEL
FLOWMETER: LAKE JOEL
COORDINATES: LAKE JOEL

CO: RMBAKER LLC
WELL: OSF-22
FLD: LAKE JOEL
CTY: OSCEOLA
STE: FLORIDA

SIC: 90
TWP: 28S
RGE: 12E
ELEVATION:
PERMANENT INVENTRY: TCC1, LAMBERS, AMOV, BRADAR
LOG NUMBER: 0810930.00
DATE: 4/29/2011
TYPE: HELD IN PROFILE
WATER

LOG NUMBER FROM: 0810930.00
DATE: 4/29/2011
TYPE: HELD IN PROFILE
WATER

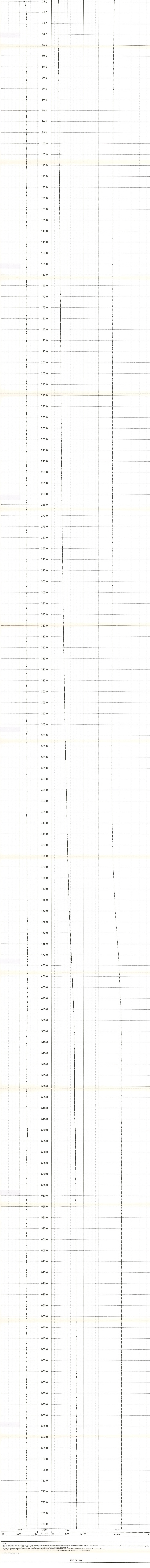
LOG NUMBER FROM: 0810930.00
DATE: 4/29/2011
TYPE: HELD IN PROFILE
WATER

LOG NUMBER FROM: 0810930.00
DATE: 4/29/2011
TYPE: HELD IN PROFILE
WATER

LOG NUMBER FROM: 0810930.00
DATE: 4/29/2011
TYPE: HELD IN PROFILE
WATER

LOG NUMBER FROM: 0810930.00
DATE: 4/29/2011
TYPE: HELD IN PROFILE
WATER

LOG NUMBER FROM: 0810930.00
DATE: 4/29/2011
TYPE: HELD IN PROFILE
WATER



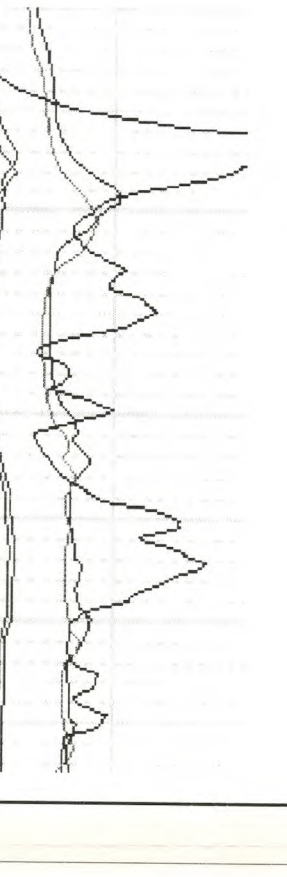
NOTE: While due care has been exercised in the performance of these measurements and observations, in accordance with methodologies utilized by the general practitioner, RMBAKER LLC can make no representations, warranties, or guarantees with respect to latent or concealed conditions that may exist. The purchaser of well logs shall assume all liability for the use of the data and for the accuracy of the data. It is the responsibility of the purchaser to verify the accuracy of the data and to use the data for the purposes intended. RMBAKER LLC is not responsible for any errors or omissions in the data or for any consequences arising from the use of the data. The purchaser shall be deemed to have accepted the data as presented and to have assumed all liability for the use of the data. The purchaser shall be deemed to have accepted the data as presented and to have assumed all liability for the use of the data. The purchaser shall be deemed to have accepted the data as presented and to have assumed all liability for the use of the data.

Certificate of Authorization (28-40)

END OF LOG

8600 Oldbridge Lane
Orlando, FL 32819
mobile ph 407-733-8958
fax 407-370-4129

rob@rmbaker.com
www.rmbaker.com



COMPANY: RMBAKER LLC
COLLAR/WELL ID: OSF-22
FIELD: LAKE JOEL
COUNTRY: USA
STATE: FLORIDA

LOCATION:
ALL SERVICES:
CALIBER AND GAMMA
DUAL INDIRECTION
HELIOR LOG
FLOTTING TAMP AND COND
FLOWMETER
VIBRO

CO: RMBAKER LLC
WELL: OSF-22
FLD: LAKE JOEL
CTY: OSCEOLA
STE: FLORIDA

PERMANENT DATUM: 100 1/2 INCHES ABOVE GRADE
LOG MEAS. FROM: GROUND SURFACE
ELEVATION: 33E
COORDINATES:
0810930.00
281714.00

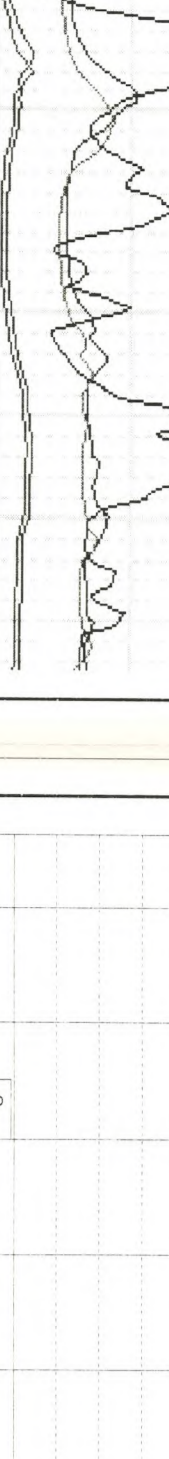
DATE	DRILLING MEAS. FROM	TYPE FLUID IN HOLE							
4/29/2011		WATER							
DRILLING MEAS. FROM	TYPE LOG	DUAL INDIRECTION	DEPTH (LTH)	DEPTH (LOGG)	DEPTH (CORR)	TOP LOGGED INTERVAL	DRILLER	RECORDED BY	WITNESSED BY
			750	738					
BRUN	BOREHOLE RECORD	CASING RECORD	NO.	SIZE	WT.	FROM	TO	FROM	TO
1		8	7.875		0	390			390



NOTES:
While due care has been exercised in the performance of these measurements and observations, in accordance with methodologies utilized by the general profession, RMBAKER LLC can make no representations, warranties, or guarantees with respect to latent or concealed conditions that may exist, which may be beyond the detection capabilities of the methodologies used, or that may extend beyond the areas and depths surveyed.
The geophysical well logs show subsurface conditions as they existed at the dates and locations shown, and it is not warranted that they are representative of subsurface conditions at other locations and times.
If, at any time, different subsurface conditions from those observed are determined to be present, we must be advised and allowed to review and revise our observations if necessary.

8900 Oldridge Lane
Orlando, FL 32819
mobile ph 407.733.8958
fax 407.370.4129

www.rimbaker.com
frob@rimbaker.com



CO: RIMBAKER LLC
WELL: OSF-22
FLD: LAKE JOEL
CTY: OSCEOLA
STE: FLORIDA

COMPANY: RIMBAKER LLC
COLLARWELL ID: OSF-22
FIELD: LAKE JOEL
COUNTRY: USA
STATE: FLORIDA

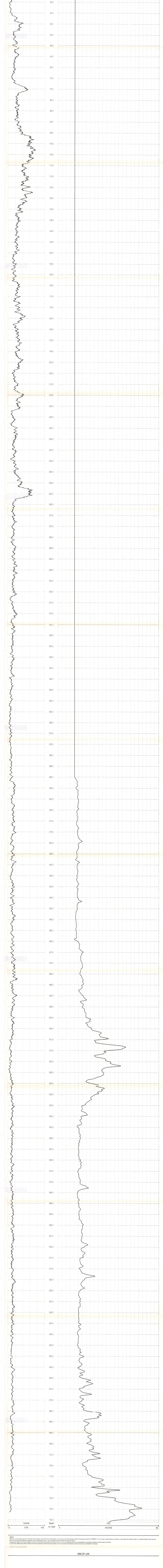
ALL SERVICES PERFORMED IN ACCORDANCE WITH THE TERMS AND CONDITIONS OF THE RIMBAKER LLC SERVICE AGREEMENT.
SOME SERVICES MAY BE PROVIDED BY SUBCONTRACTORS.
SERVICES PROVIDED BY:
RIMBAKER LLC
10000 W. BOULEVARD
SUITE 100
ORLANDO, FL 32819
TEL: 407.733.8958
FAX: 407.370.4129
WWW.RIMBAKER.COM

PERMANENT LOCATION: TFC-1 INCHES ABOVE GRADE
SERIAL: 96
TEMP: 28S
REF: 32E
HEAVY: 100
CORROSION: 100

LOG MILES FROM GROUND SURFACE:
DEPTH IN METERS FROM:
DEPTH IN FEET FROM:
DATE: 4/29/2011
TIME OF LOGGING: 11:00 AM
WAVE: 281714.00

LOG NUMBER: 1
LOG DATE: 4/29/2011
LOG TIME: 11:00 AM
LOG LOCATION: TFC-1 INCHES ABOVE GRADE
LOG OPERATOR: RIMBAKER LLC
LOG REVIEWER: RIMBAKER LLC
LOG APPROVAL: RIMBAKER LLC
LOG COMMENTS: 25

LOG NUMBER: 1
LOG DATE: 4/29/2011
LOG TIME: 11:00 AM
LOG LOCATION: TFC-1 INCHES ABOVE GRADE
LOG OPERATOR: RIMBAKER LLC
LOG REVIEWER: RIMBAKER LLC
LOG APPROVAL: RIMBAKER LLC
LOG COMMENTS: 25



NOTES:
While care has been exercised in the performance of these measurements and observations in accordance with methodologies utilized by the general practitioners, RIMBAKER LLC makes no representations, warranties, or guarantees with respect to latent or concealed conditions that may exist which may be beyond the detection capabilities of the methodologies used, or that may exist below the areas and depths surveyed.
The geophysical well logs show subsurface conditions as they existed at the time and under the conditions shown, and do not constitute a prediction of future conditions or a representation of subsurface conditions at other locations and times.
If, at any time, different subsurface conditions than those observed are determined to be present, we must be advised and allowed to review and revise our observations if necessary.

END OF LOG