





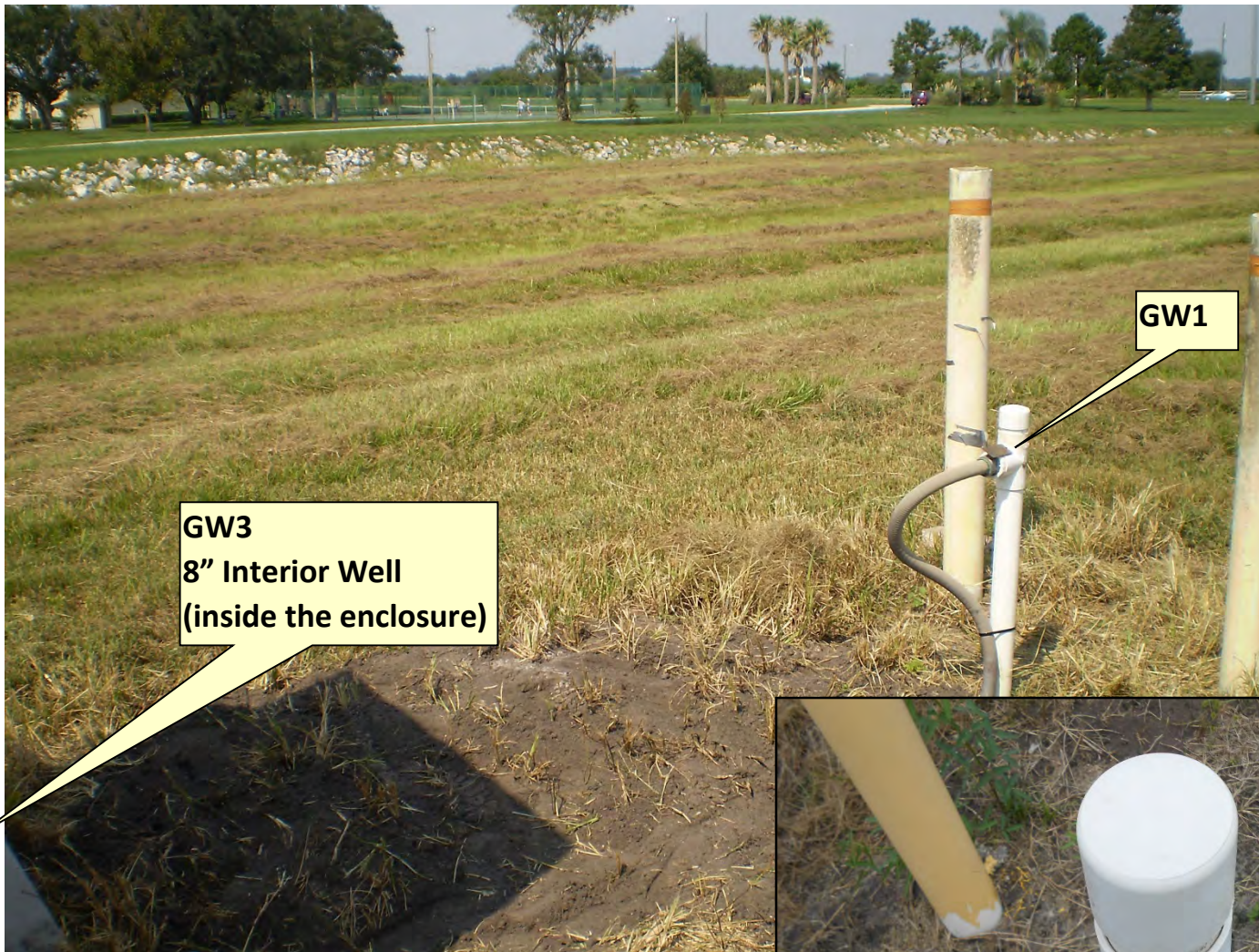
GW1
Lat: 28°15-08.9"
Long: 81°19'42.64"

GW3
Lat: 28°15-08.84"
Long: 81°19'42.74"

GW2
Lat: 28°15-08.35"
Long: 81°19'43.32"

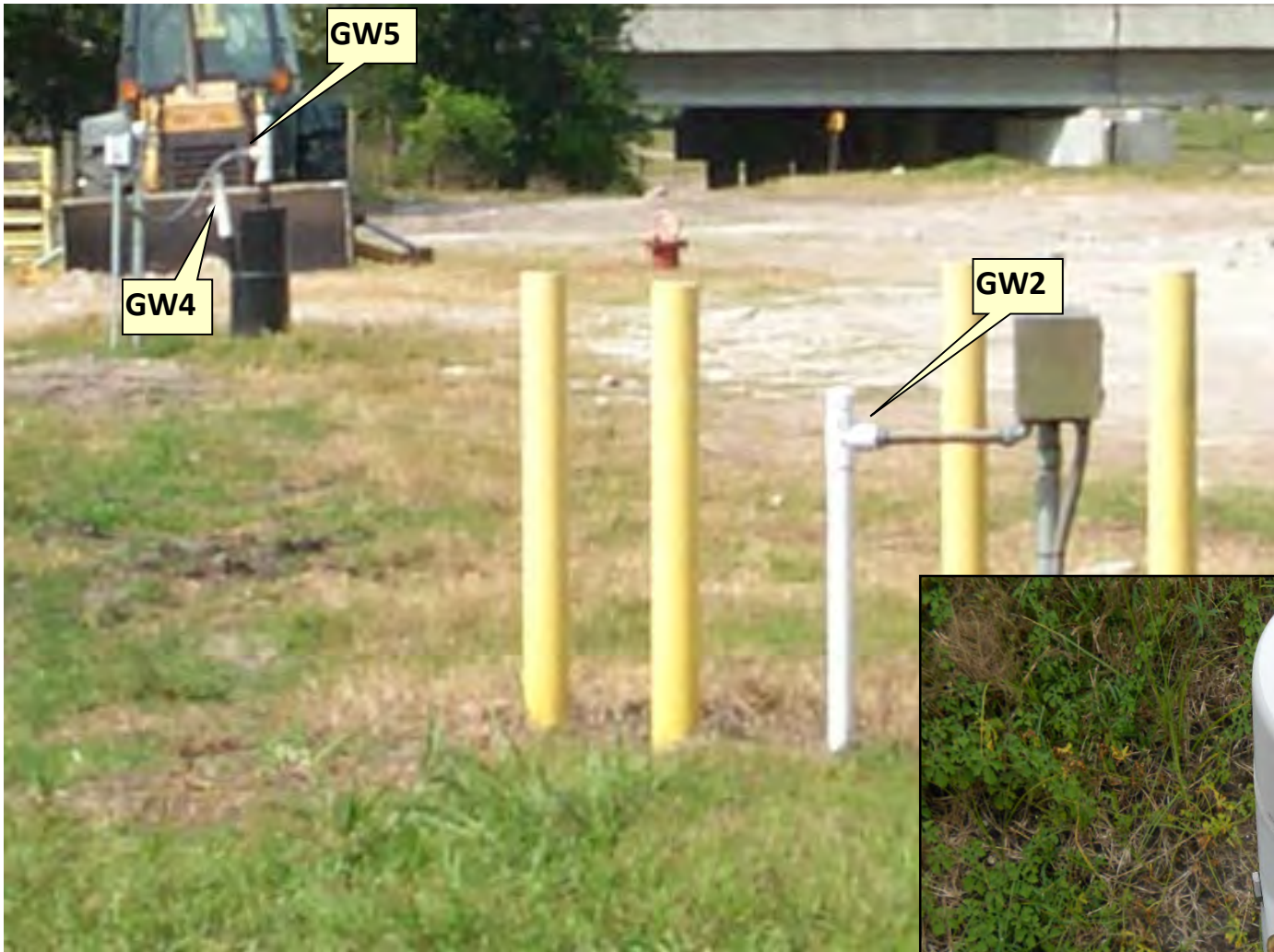
GW4 & GW5
Lat: 28°15-07.70"
Long: 81°19'44.1"

**Approximate locations
digitized on the esri product**



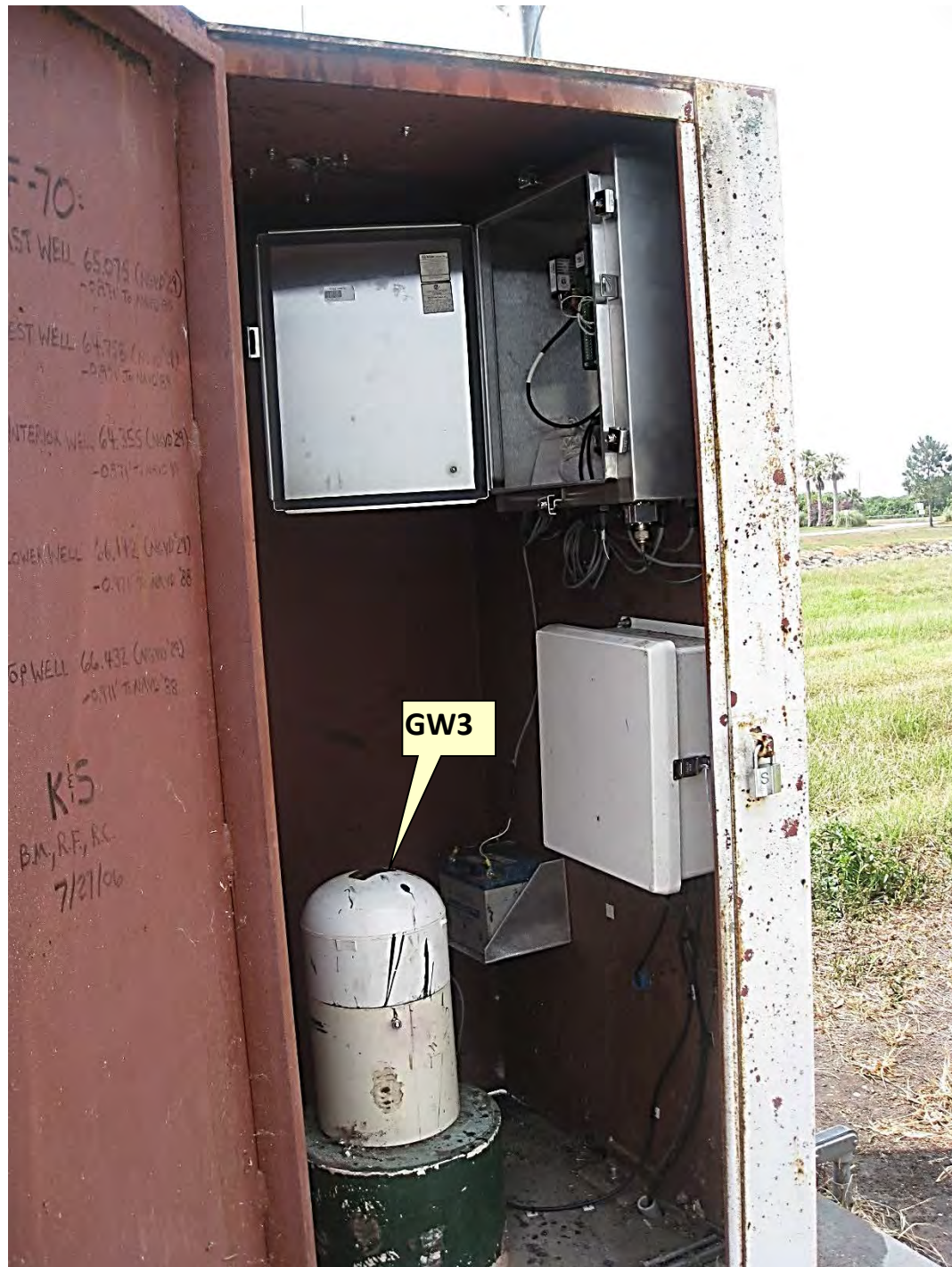
Looking Northeasterly



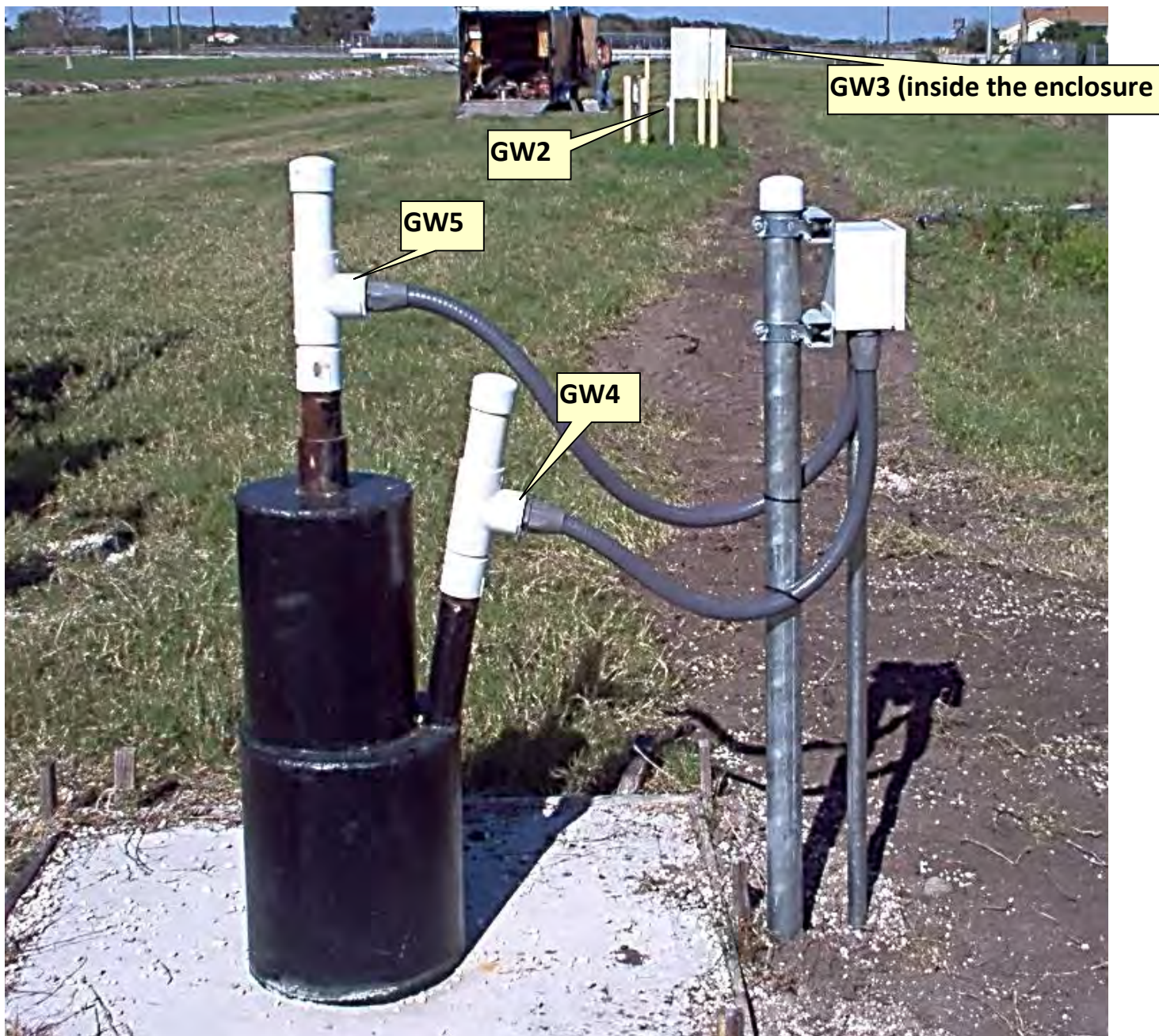


Looking West





Looking Northerly



Looking East

OSF-70

GW1 2" EAST WELL 65.075 (NGVD'29)
-0.971' TO NAVD'88

GW2 2" WEST WELL 64.758 (NGVD'29)
-0.971' TO NAVD'88

GW3 8" INTERIOR WELL 64.355 (NGVD'29)
-0.971' TO NAVD'88

GW4 LOWER WELL 66.142 (NGVD'29)
-0.971' TO NAVD'88

GW5 TOP WELL 66.432 (NGVD'29)
-0.971' TO NAVD'88

K&S

B.M., R.F., R.C.

7/27/06