



PB 1544	Elevation:	16.86 ft	(NAVD 88)	18.30 ft	(NGVD 29)
Bench Mark 1:	ENR 103	20.07 ft	(NAVD 88)	21.49 ft	(NGVD 29)
Bench Mark 2:	CAN AZ MK	36.52 ft	(NAVD 88)	37.75 ft	(NGVD 29)
Bench Mark 3:	L 402	15.91 ft	(NAVD 88)	17.42 ft	(NGVD 29)
Bench Mark 4:	C 402	14.97 ft	(NAVD 88)	16.52 ft	(NGVD 29)
Bench Mark 5:	X 537	23.29 ft	(NAVD 88)	24.74 ft	(NGVD 29)
Monitoring Well:	PB 1544	17.02 ft	(NAVD 88)	18.46 ft	(NGVD 29)
		<p>To Reach PB 1544:</p> <p>FROM INTERSECTION OF US 441 & FORREST HILL BLVD. GO EAST ON FORREST HILL BLVD. FOR 2.0 MILES TO FLORIDA DEPARTMENT OF TRANSPORTATION ENTRANCE ROAD. GO SOUTH ON DOT ENTRANCE ROAD FOR +/- 100 FEET TO CONSTRUCTION ENTRANCE FOR CHOLEE EQUESTRIAN FACILITY. GO EAST ON DIRT ROAD FOR +/- 250 FEET THEN SOUTHERLY ON DIRT ROAD FOR 0.1 MILE TO MARK ON LEFT. 210.5 FEET NORTHEAST OF MONITORING WELL PB 1544, 23 FEET SOUTH OF EDGE OF WATER OF SMALL CANAL, 87.75 FEET NORTHEAST OF PALM TREE WITH PK NAIL & DISK (LB 4318), 55 FEET NORTH OF CENTERLINE DIRT ROAD. SET MAGNET 1 FOOT NORTH OF CONCRETE MONUMENT.</p>			

PB 1547	Elevation:	18.42 ft	(NAVD 88)	19.95 ft	(NGVD 29)
Bench Mark 1:	I95 Y 15	14.98 ft	(NAVD 88)	N/A ft	(NGVD 29)
Bench Mark 2:	JENKINS	19.89 ft	(NAVD 88)	21.41 ft	(NGVD 29)
Monitoring Well 1:	PB 1547	17.95 ft	(NAVD 88)	19.47 ft	(NGVD 29)
Length of Run:	11.76 km		To Reach PB 1547:		
Max Allowable Misclosure:	27 mm		<p>FROM INTERSECTION OF INDIANTOWN ROAD AND MELLEN LANE. GO SOUTH ON MELLEN LANE FOR 0.5 MILE TO LEVEE ROAD ON NORTH SIDE OF CANAL. GO WEST ON LEVEE ROAD FOR +/- 125 FT TO MARK ON RIGHT. 6.6 FT EAST OF MONITORING WELL PB 1547, 22.2 FT NORTH OF NORTH TOP OF BANK, 53.5 FT EAST OF SOUTHEAST CORNER OF CONTROL BOX WITH SOLAR PANEL, 137.3 FT WEST OF CENTERLINE MELLEN ROAD. SET MAGNET 1 FT NORTH OF CONCRETE MONUMENT.</p>		
Actual Misclosure:	6 mm				
					

PB-1544



Nick Miller, Inc.

Date of Photo: August 4, 2005

View: Looking at the well PB-1544 facing east

PB-1544



Nick Miller, Inc.

Date of Photo: August 4, 2005

View: Close-up of the well PB-1544 showing the contractor's markings

PB-1544

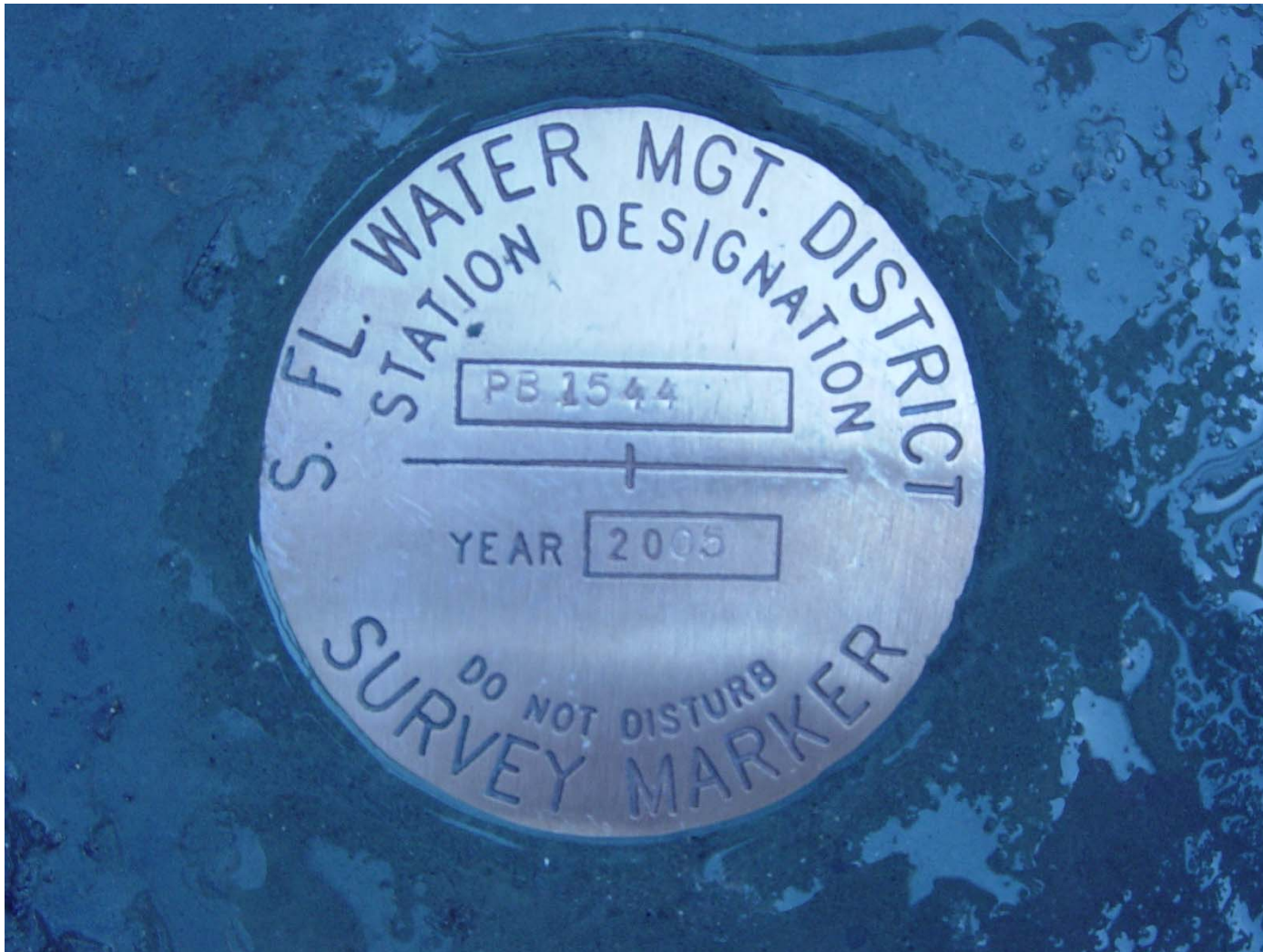


Nick Miller, Inc.

Date of Photo: August 4, 2005

View: Looking at the benchmark PB-1544 facing south

PB-1544



Nick Miller, Inc.
Date of Photo: August 4, 2005
View: A top view of the benchmark

1078

SFUND

SET CONCRETE MONUMENT @
MONITORING WELL SITE PB 1544

PB 1544

- SET (BORED-IN) - PLACE CONCRETE MONUMENT
W/ BRASS DISK
- SET MAGNET 1' NORTH OF CONCRETE MONUMENT
- SET CONCI. MONUMENT 210.5' NE OF MONITORING WELL PB 1544
- " " " 73' SOUTH OF EDN OF SMALL CANAL
- " " " 87.75' NE OF PALM TREE W/ PK NAIL & DISK
LB4318
- " " " 55' NORTH OF (D) DIRT ROAD

STAMPED PB 1544
2005

COORDINATES ON CONCRETE MONUMENT PB 1544

STATE PLANE 83

WGS 84

N. 256851.460 METERS

N. 26° 38' 58.573"

E. 282761.564 METERS

W. 080° 10' 07.324"

COORDINATES ON MONITORING WELL PB 1544

STATE PLANE 83

WGS 84

N. 256830.044 METERS

N. 26° 38' 57.890"

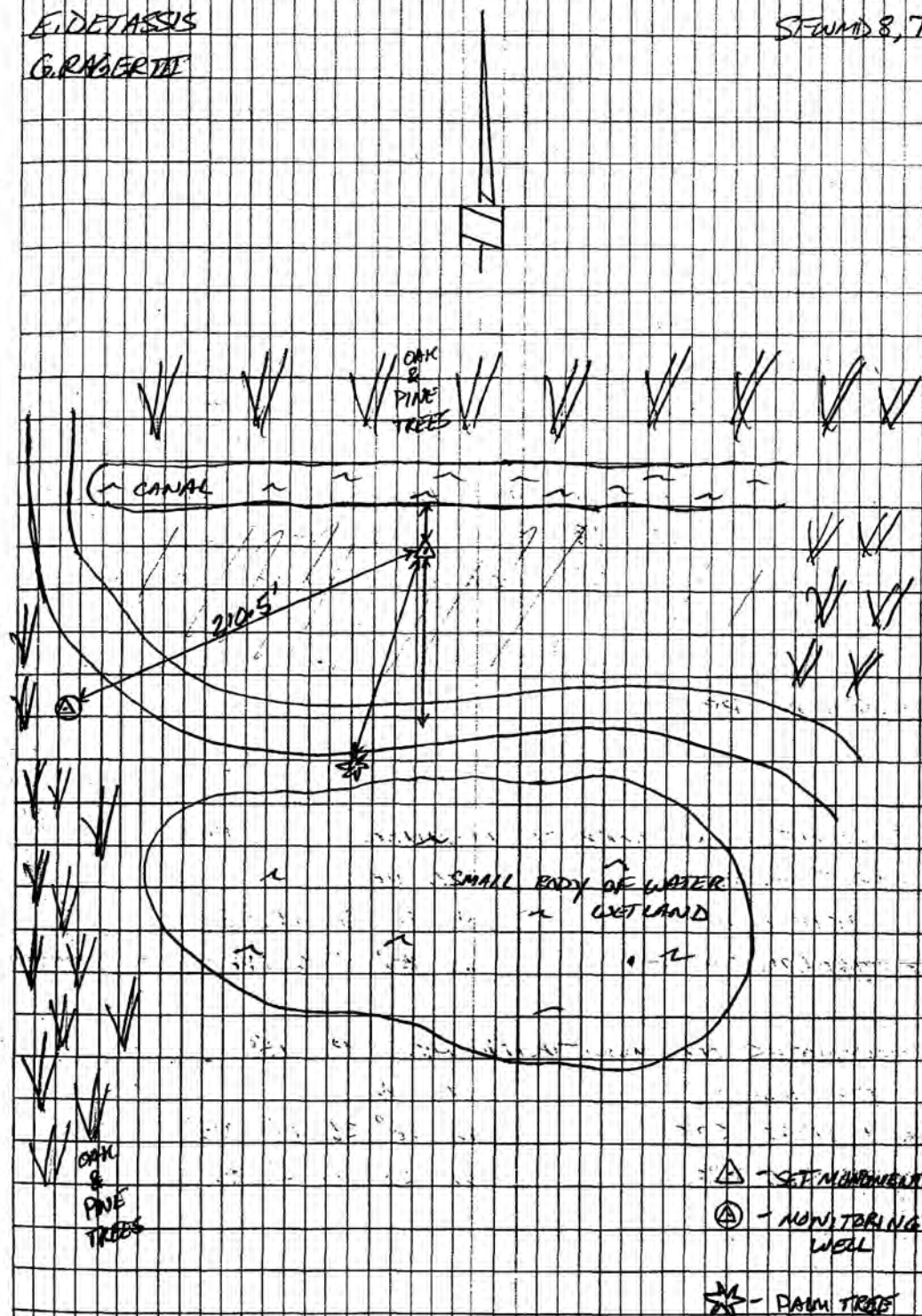
E. 282700.291 METERS

W. 080° 10' 09.522"

THRU. AUG. 4, 2005

E. DETASSIS
G. RAGERT

SFUND 8, 7





SOUTH FLORIDA WATER MANAGEMENT DISTRICT

Rev. 4/01

COUNTY	PALM BEACH	PROJECT	Hydrology – Palm Beach County Wells	DESIGNATION	PB 1544 2005
SECTION	16	TOWNSHIP	44 SOUTH	RANGE	42 EAST
GEOGRAPHIC INDEX OF QUAD					
Established by <u>Nick Miller Inc.</u> Recovered by			NAME OF QUADRANGLE Palm Beach Farms		
SURVEYOR <u>Stephen M. Gordon</u> DATE <u>8/26/2005</u>			FIELD BOOK <u>8</u> PAGE <u>7</u>		
HORIZONTAL DATUM: 1927 1983 Other _____ (circle one) ZONE E or W					
STATE PLANE COORDINATES		E 927,694 ft		N 842,687 ft	
LATITUDE: N 26.64960°		LONGITUDE: W 80.16870°			
VERTICAL DATUM: MSL 1929 1988 Other _____ (circle one)			EL. 16.86 ft		
VERTICAL DATUM: MSL 1929 1988 Other _____ (circle one)			EL. 18.30 ft		
CONTROL ACCURACY: HORIZONTAL 1 2 3 SUB-METER (circle one) VERTICAL 1 2 3					
DESCRIPTION					
<p>To Reach:</p> <p>FROM INTERSECTION OF US 441 & FORREST HILL BLVD. GO EAST ON FORREST HILL BLVD. FOR 2.0 MILES TO FLORIDA DEPARTMENT OF TRANSPORTATION ENTRANCE ROAD. GO SOUTH ON DOT ENTRANCE ROAD FOR +/- 100 FEET TO CONSTRUCTION ENTRANCE FOR CHOLEE EQUESTRIAN FACILITY. GO EAST ON DIRT ROAD FOR +/- 250 FEET THEN SOUTHERLY ON DIRT ROAD FOR 0.1 MILE TO MARK ON LEFT. 210.5 FEET NORTHEAST OF MONITORING WELL PB 1544, 23 FEET SOUTH OF EDGE OF WATER OF SMALL CANAL, 87.75 FEET NORTHEAST OF PALM TREE WITH PK NAIL & DISK (LB 4318), 55 FEET NORTH OF CENTERLINE DIRT ROAD. SET MAGNET 1 FOOT NORTH OF CONCRETE MONUMENT.</p> <p>Benchmarks Used: ENR 103, CAN AZ MK, L 402, C 402, and X 537</p> <p>Notable Land marks:</p>					



SOUTH FLORIDA WATER MANAGEMENT DISTRICT

Rev. 4/01

SKETCH

1070 SFWD

SET CONCRETE MONUMENT @
MONITORING WELL SITE PB 1544

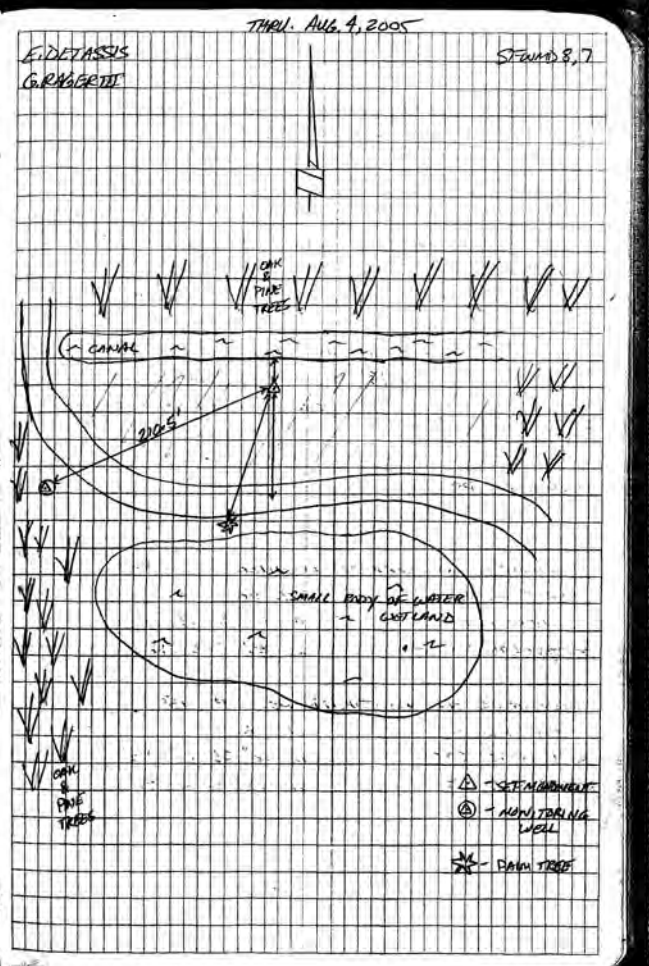
PB 1544

- SET THURED-IN-PLACE CONCRETE MONUMENT W/ BRASS DISK
- SET MAGNET 1' NORTH OF CONCRETE MONUMENT
- SET CONX. MONUMENT 210.5' NE OF MONITORING WELL PB 1544
- " " " 73' SOUTH OF EDN OF SMALL CANAL
- " " " 87.75' NE OF PALM TREE W/ PK MAIL DISK LEASIS
- " " " 55' NORTH OF G. DIRT ROAD

STAMPED PB 1544
2005

COORDINATES ON CONCRETE MONUMENT PB 1544
STATE PLANE 83 WGS 84
N. 256851.460 METERS N. 26° 38' 58.573"
E. 282761.564 METERS W. 080° 10' 07.324"

COORDINATES ON MONITORING WELL PB 1544
STATE PLANE 83 WGS 84
N. 256830.144 METERS N. 26° 38' 57.890"
E. 282700.391 METERS W. 080° 10' 09.522"



PB-1547



Nick Miller, Inc.

Date of Photo: July 25, 2005

View: Looking at the well PB-1547 facing east

PB-1547



Nick Miller, Inc.
Date of Photo: July 25, 2005
View: Close-up of the well PB-1547 showing the contractor's markings

PB-1547



Nick Miller, Inc.

Date of Photo: July 25, 2005

View: Looking at the benchmark PB-1547 facing west

PB-1547



Nick Miller, Inc.

Date of Photo: July 25, 2005

View: A top view of the benchmark PB-1547

PB-1547A



Nick Miller, Inc.
Date of Photo: July 26, 2005
View: Looking at benchmark PB-1547A facing west

PB-1547A

NAD83
Y (N)= 289254.079m
X (E)= 277670.299m
NAVD88
6.18934m (20.306193')



Nick Miller, Inc.
Date of Photo: July 26, 2005
View: A top view of the benchmark PB-1547A

PB-1547B



Nick Miller, Inc.
Date of Photo: July 26, 2005
View: Looking at benchmark PB-1547B facing west

PB-1547B

NAD83
Y (N)= 289247.193m
X (E)= 279975.814m
NAVD88
5.41011m (17.7496692')



Nick Miller, Inc.
Date of Photo: July 26, 2005
View: A top view of the benchmark PB-1547B

PB-1547C



Nick Miller, Inc.

Date of Photo: August 2, 2005

View: Looking at benchmark PB-1547C facing east

PB-1547C



Nick Miller, Inc.

Date of Photo: August 2, 2005

View: A top view of the benchmark PB-1547C

1078

SFWMD

SET CONCRETE MONUMENT AT SITE
OF MONITORING WELL PB 1547

PB 1547

- SET POURED-IN-PLACE CONCRETE MONUMENT
W/ ^{BRASS} ALUM. DISK (SFWMD)
- SET MAGNET 1' NORTH OF CONG. MONUMENT
- SET CONG. MONUMENT 6.6' EAST OF MONITORING WELL PB 1547
- " " " 22.2' NORTH OF NORTH TOP OF BANK
- " " " 53.5' EAST OF SE CORNER OF CONTROL BOX W/ SOLAR PANEL
- " " " 137.3' WEST OF E MELLEW ROAD
MELLEW LANE

STAMPED PB 1547
2005

COORDINATES ON CONCRETE MONUMENT PB 1547

STATE PLANE 83

WGS 84

N. 788438.09 m

N. $26^{\circ}56'06''135$

E. 276286.037 m

E. W. $080^{\circ}13'54''56$

COORDINATES ON MONITORING WELL PB 1547

STATE PLANE 83

WGS 84

N. 288438.389 m

N. $26^{\circ}56'06''145$

E. 276284.613 m

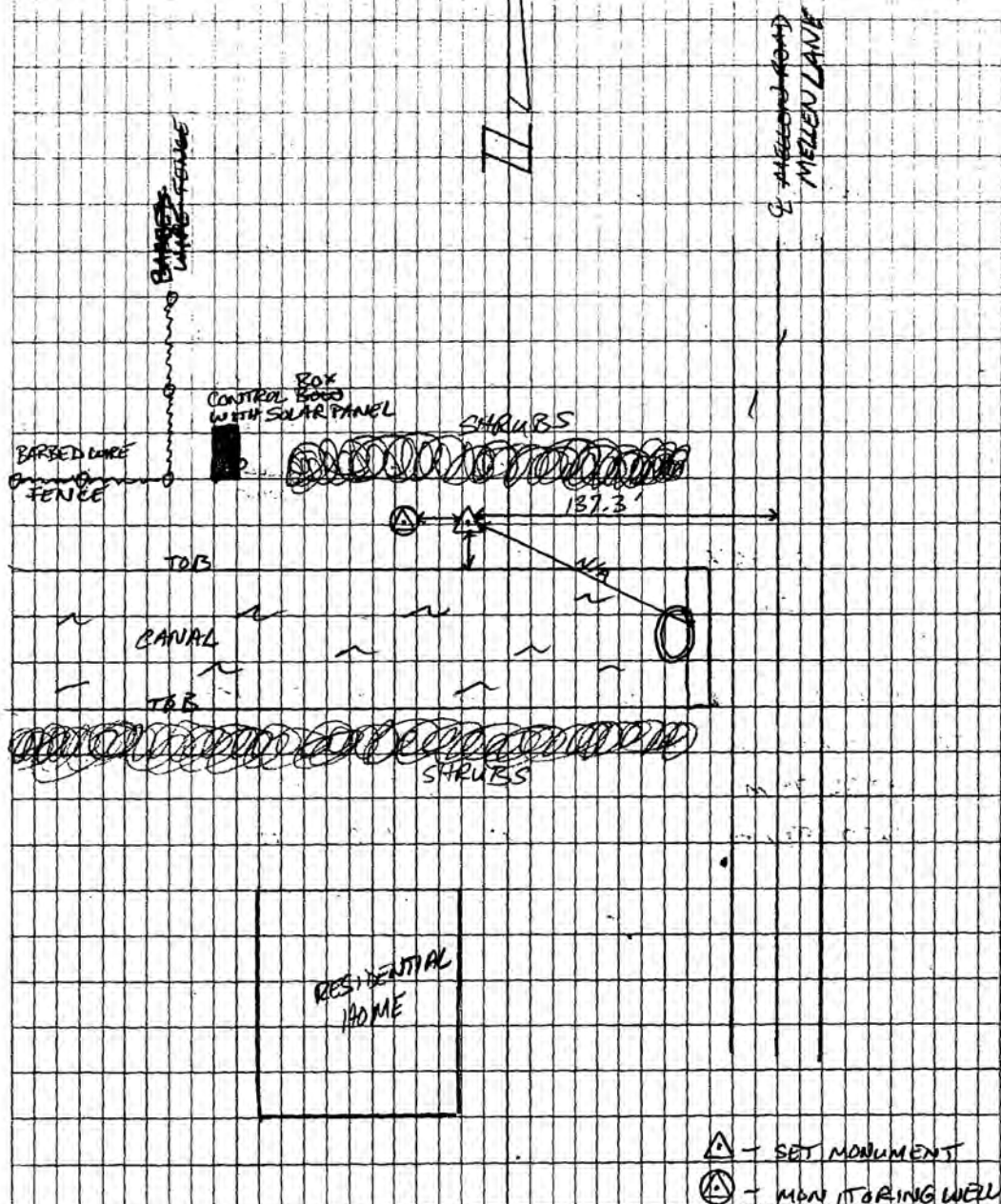
E. W. $080^{\circ}13'54''61$

MON. JULY 25, 2005

E. DETASSIS

578

A. COOK



1078

SEWMD

SET SECOND CONCRETE MONUMENT
FOR MONITORING WELL PIS 1547

PB 1547A

- SET POURED-IN-PLACE CONCRETE MONUMENT
W/ BRASS DISK (SEWMD)
- SET MAGNET 1' NORTH OF CONCR. MONUMENT
- SET CONCR. MONUMENT 20' SOUTH & EAST BOUND INDIANTOWN
ROAD
- " " " 54.5' NORTH OF NORTH EDGE OF GUARDRAIL
- " " " 33.2' EAST OF NE CORNER OF STORM BASIN
- " " " 172.8' WEST OF YELLOW STREET SIGN
(WINTERHAWK TERRACE)

STAMPED PB 1547A
2005

COORDINATES ON CONCRETE MONUMENT PB 1547A

STATE PLANE 83

WGS 84

N. 289254.099 m

N. $26^{\circ}56'32''.37$

E. 277670.299 m

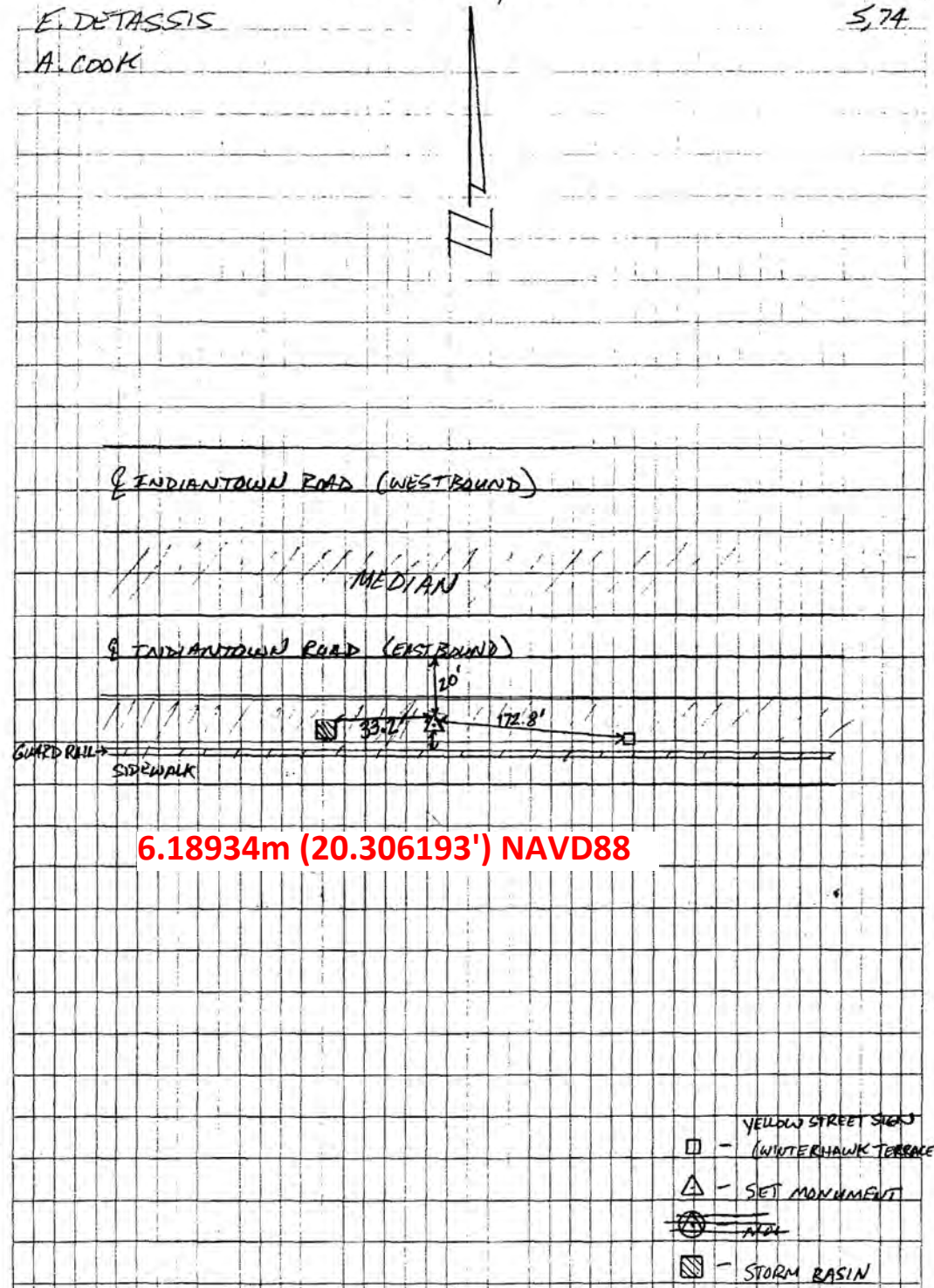
W. $080^{\circ}13'04''.20$

TUES. JULY 26, 2005

E. DETASSIS

S. 74

A. COOK



6.18934m (20.306193') NAVD88

- - YELLOW STREET SIGN (WINTERHAWK TERRACE)
- - SET MONUMENT
- - MAGNET
- ▨ - STORM BASIN

1078

SOUND

SET THIRD CONCRETE MONUMENT
FOR MONITORING WELL PB 1547

PB 1547B

- SET POURED-IN-PLACE CONCRETE MONUMENT
W/ BRASS DISK
- SET MAGNET 1' NORTH OF CONC. MONUMENT
- SET CONC. MONUMENT 21.2' EAST OF STOP SIGN
- " " " 65.5' NORTH OF WEST CORNER OF WHITE PICKETT
FENCE
- " " " 35.9' SOUTH OF C OF EASTBOUND
INDIANTOWN ROAD
- " " "

STAMPED PB 1547B
2005

COORDINATES ON CONCRETE MONUMENT PB 1547B

STATE PLANE 83

WGS 84

N. 289247.193m

N. 26° 56' 31" 68

E. 279975.814m

W. 020° 11' 40" 62

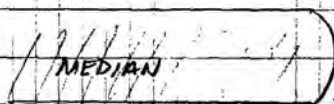
TUES. JULY 26, 2005

5,75

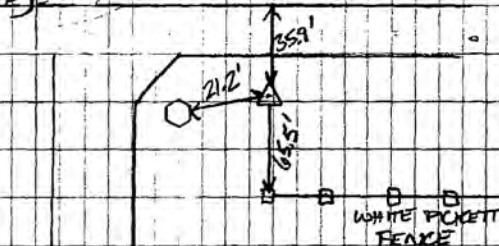
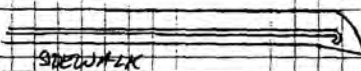
EIDETASIS

A. COOK

INDIANTOWN ROAD (WESTBOUND)



INDIANTOWN ROAD (EASTBOUND)



5.41011m (17.7496692') NAVD88

ENTRANCE ROAD
FOR DISTRICT NUMBER ASSOCIATION

- - STOP SIGN
- △ - SET MONUMENT



SOUTH FLORIDA WATER MANAGEMENT DISTRICT

Rev. 4/01

COUNTY	PALM BEACH	PROJECT	Hydrology – Palm Beach County Wells	DESIGNATION	PB 1547 2005
SECTION	03	TOWNSHIP	41 SOUTH	RANGE	41 EAST
GEOGRAPHIC INDEX OF QUAD					
Established by <u>Nick Miller Inc.</u> Recovered by			NAME OF QUADRANGLE Rood		
SURVEYOR <u>Stephen M. Gordon</u> DATE <u>8/26/2005</u>			FIELD BOOK <u>5</u> PAGE <u>73</u>		
HORIZONTAL DATUM: 1927 <input checked="" type="radio"/> 1983 Other _____ (circle one) ZONE <input checked="" type="radio"/> E or W					
STATE PLANE COORDINATES		E 906,439 ft		N 946,308 ft	
LATITUDE: N 26.93504°		LONGITUDE: W 80.23182°			
VERTICAL DATUM: MSL 1929 <input checked="" type="radio"/> 1988 Other _____ (circle one)			EL. 18.42 ft		
VERTICAL DATUM: MSL <input checked="" type="radio"/> 1929 1988 Other _____ (circle one)			EL. 19.95 ft		
CONTROL ACCURACY: HORIZONTAL 1 2 3 <input checked="" type="radio"/> SUB-METER (circle one) VERTICAL 1 2 <input checked="" type="radio"/> 3					
DESCRIPTION					
<p>To Reach:</p> <p>FROM INTERSECTION OF INDIANTOWN ROAD AND MELLEN LANE. GO SOUTH ON MELLEN LANE FOR 0.5 MILE TO LEVEE ROAD ON NORTH SIDE OF CANAL. GO WEST ON LEVEE ROAD FOR +/- 125 FT TO MARK ON RIGHT. 6.6 FT EAST OF MONITORING WELL PB 1547, 22.2 FT NORTH OF NORTH TOP OF BANK, 53.5 FT EAST OF SOUTHEAST CORNER OF CONTROL BOX WITH SOLAR PANEL, 137.3 FT WEST OF CENTERLINE MELLEN ROAD. SET MAGNET 1 FT NORTH OF CONCRETE MONUMENT.</p> <p>Benchmarks Used: I95 Y 15 and JENKINS</p> <p>Notable Land marks:</p>					



SOUTH FLORIDA WATER MANAGEMENT DISTRICT

Rev. 4/01

SKETCH

1078

SFWMD

SET CONCRETE MONUMENT AT SITE OF MONITORING WELL PB 1547

TB 1547

- SET POURED-IN-PLACE CONCRETE MONUMENT W/ ^{BRASS} ALUM. DISK (SFWMD)
- SET MAGNET 1' NORTH OF CONCR. MONUMENT
- SET CONCR. MONUMENT 6.6' EAST OF MONITORING WELL PB 1547
- " " " 22.2' NORTH OF NORTH TOP OF BANK
- " " " 53.5' EAST OF SE CORNER OF CONTROL BOX W/ SOLAR PANEL
- " " " 137.3' WEST OF ~~C. MCELLEN ROAD~~ MCELLEN CANAL

STAMPED PB 1547
2005

COORDINATES ON CONCRETE MONUMENT PB 1547 -

STATE PLANE 83	WGS 84
N. 788438.09 m	N. 26° 56' 06" 35
E. 276286.037 m	E. W. 080° 13' 54" 56

COORDINATES ON MONITORING WELL PB 1547

STATE PLANE 83	WGS 84
N. 788438.309 m	N. 26° 51' 06" 145
E. 276284.613 m	E. W. 080° 13' 54" 61

MON. JULY 25, 2005

E. DETASSIS
A. COOK

S, 73

