



RMBAKER LLC

WELL SLF-75
UWI SLF-75

Geology and Geophysics

8600 Oldbridge Lane
Orlando, FL 32819
mobile ph 407-733-8958

LOG STAGE EXPLORATORY

rob@rmbaker.com
www.rmbaker.com

HEADER NOTES:

COMP	SFWMD
LOC	C-24 CANAL
FLD	C-24 CANAL
CNTY	ST. LUCIE
STAT	FL
PROV	FL
CTRY	USA
LATI	X
LONG	Y
GDAT	WGS84
SEC	HDAT
TWP	ELEV
RGE	V DAT

PERMANENT DATUM:
LOG MEASURED FROM: TOP OF PAD
DRILLING MEASURED FROM:

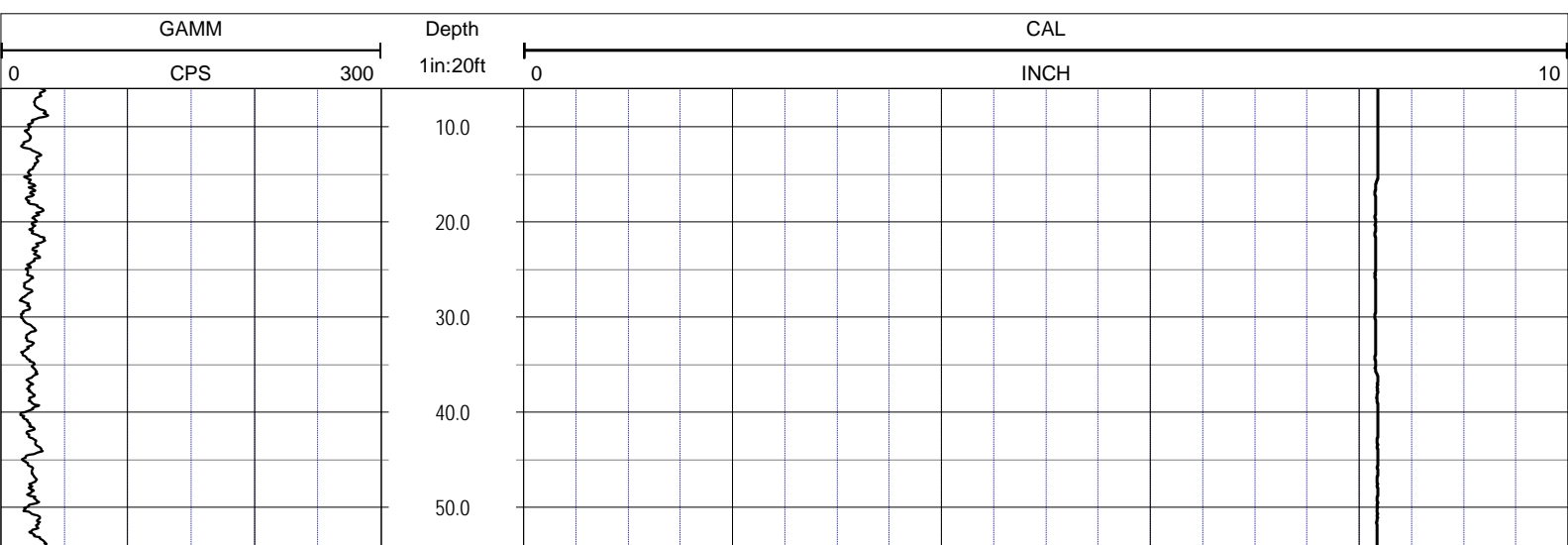
ALL SERVICES:
CALIPER
NATURAL GAMMA
ELECTRIC
DUAL INDUCTION
FLOWMETER
FLUID COND & TEMP
VIDEO

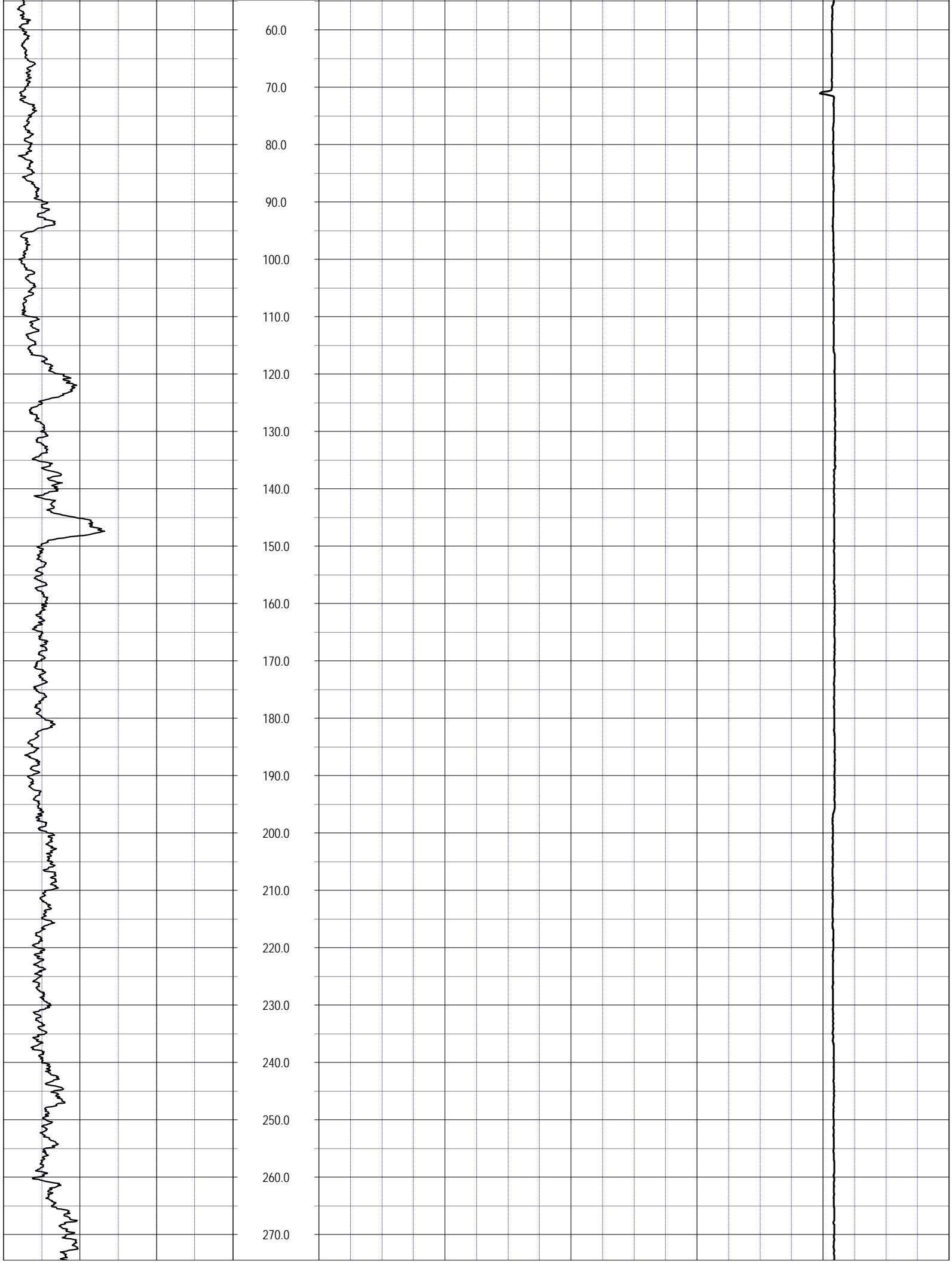
DATE	08 Nov 16	TYPE FLUID IN HOLE	WATER
RUN No	1	LOGGING SPEED (FT/MIN)	40
TYPE LOG	CALIPER	TROLLING DIRECTION	UP
DEPTH-DRILLER	700	PUMPING RATE (GPM)	N/A
DEPTH-LOGGER	693		
DRILLER			
RECORDED BY	RMB		
SRVC	RMBAKER LLC	API	N/A
WITNESSED BY	SFWMD	LIC	N/A

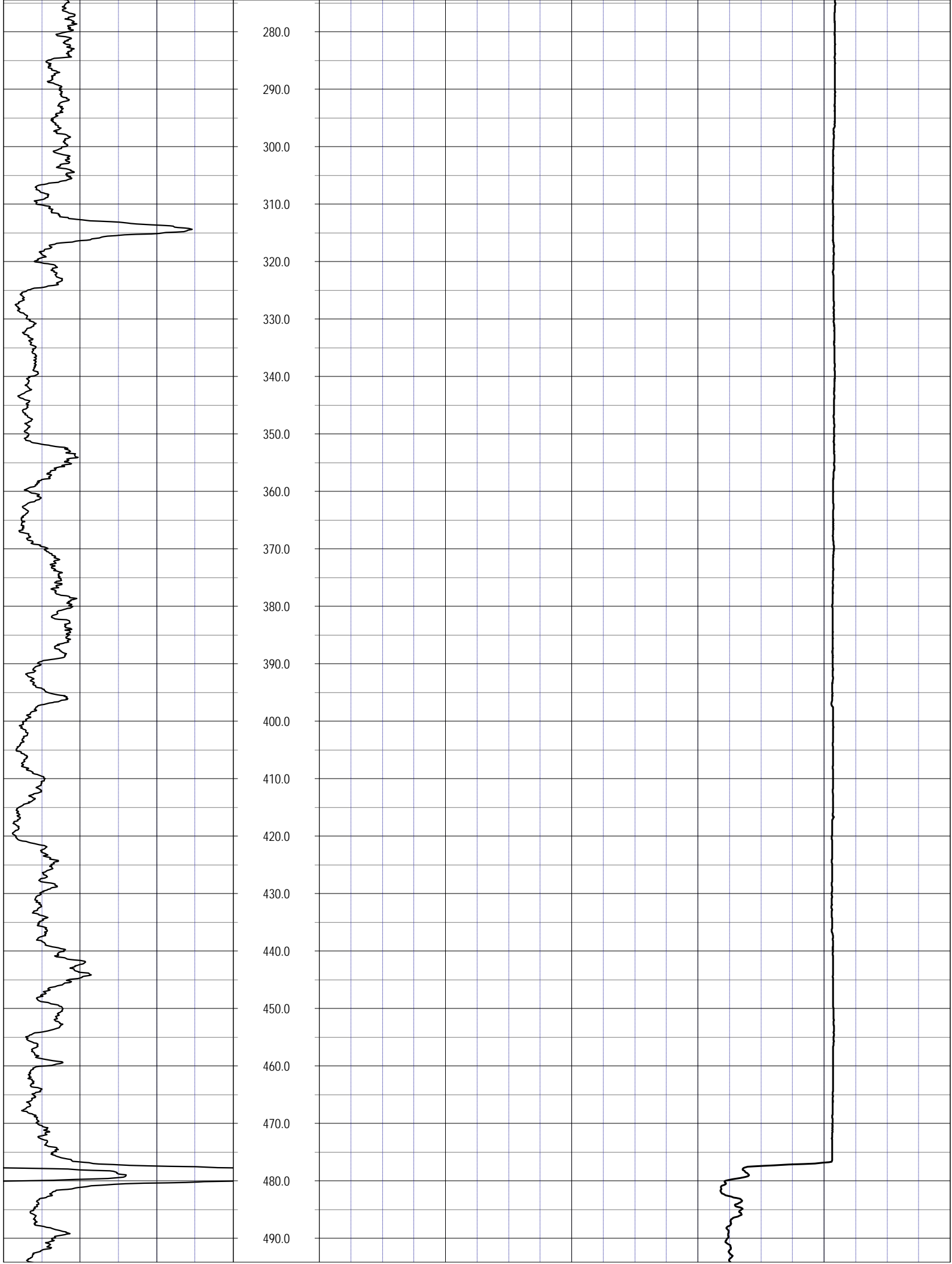
BOREHOLE RECORD			
RUN NO.	BIT	FROM	TO
1	7.875	475	700
CASING RECORD			
	SIZE	MAT.	FROM
	8	PVC	0
			475

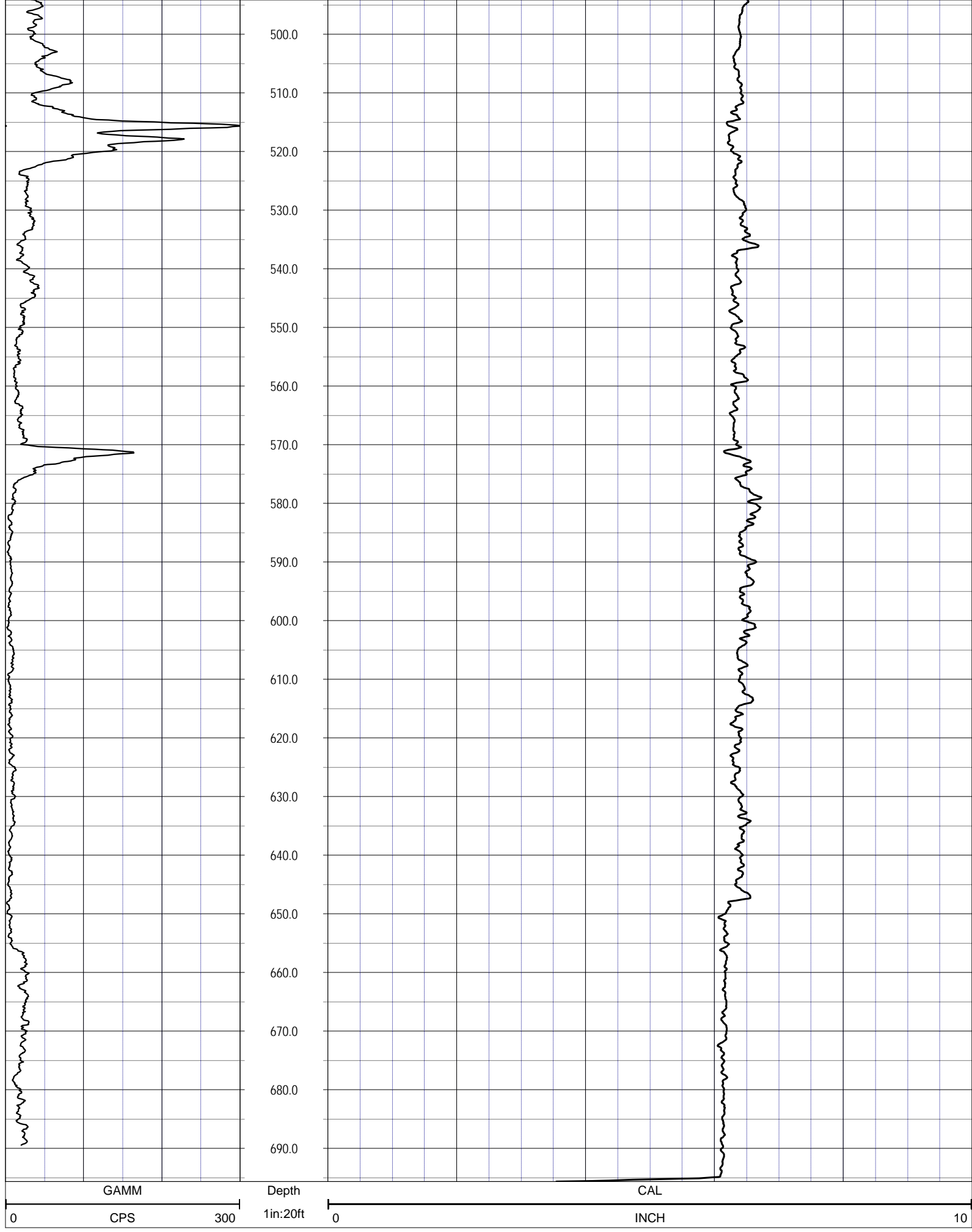
WATER QUALITY LOG CODES

static fluid temperature	TEU	dynamic fluid conductivity	FLCP	caliper	CAL
dynamic fluid temperature	TEP	static differential cond.	DCOU	repeat designation	R
static differential temperature	DTEU	dynamic differential cond.	DCOP	natural gamma	GAMM
dynamic differential temp.	DTEP	static specific conductance	C25U		
static fluid conductivity	FLCU	dynamic specific conductance	C25P		









While due care has been exercised in the performance of these measurements and observations, in accordance with methodologies utilized by the general practitioner, RIMBAKER LLC can make no representations, warranties, or guarantees with respect to latent or concealed conditions that may exist, which may be beyond the detection capabilities of the methodologies used, or that may extend beyond the areas and depths surveyed. The geophysical well logs show subsurface conditions as they existed at the dates and locations shown, and it is not warranted that they are representative of subsurface conditions at other locations and times. If, at any time, different subsurface conditions from those observed are determined to be present, we must be advised and allowed to review and revise our observations if necessary.

Florida Licensed Geology Business GB 458

END OF LOG



RMBAKER LLC
Geology and Geophysics

WELL SLF-75
UWI SLF-75

8600 Oldbridge Lane
Orlando, FL 32819
mobile ph 407-733-8958

LOG STAGE EXPLORATORY

rob@rmbaker.com
www.rmbaker.com

HEADER NOTES:

COMP SFWMD
LOC C-24 CANAL
FLD C-24 CANAL
CNTY ST. LUCIE
STAT FL
PROV FL
CTRY USA

LATI X
LONG Y
GDAT WGS84
SEC HDAT
TWP ELEV
RGE V DAT

ALL SERVICES:
CALIPER
NATURAL GAMMA
ELECTRIC
DUAL INDUCTION
FLOWMETER
FLUID COND & TEMP
VIDEO

PERMANENT DATUM:
LOG MEASURED FROM: TOP OF PAD

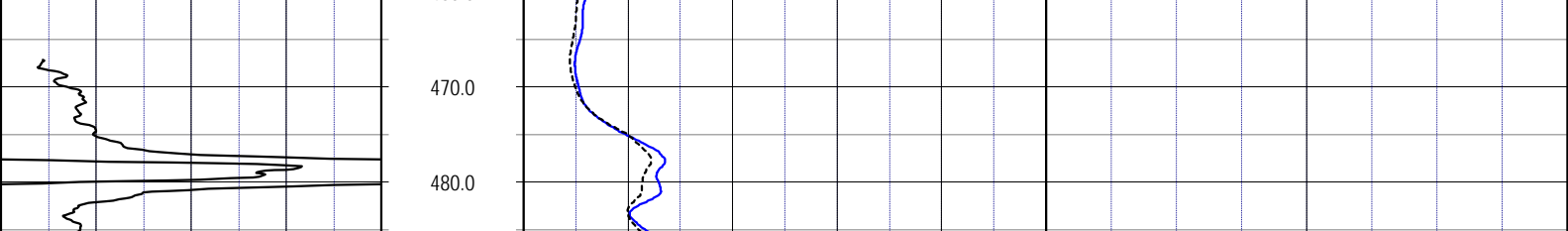
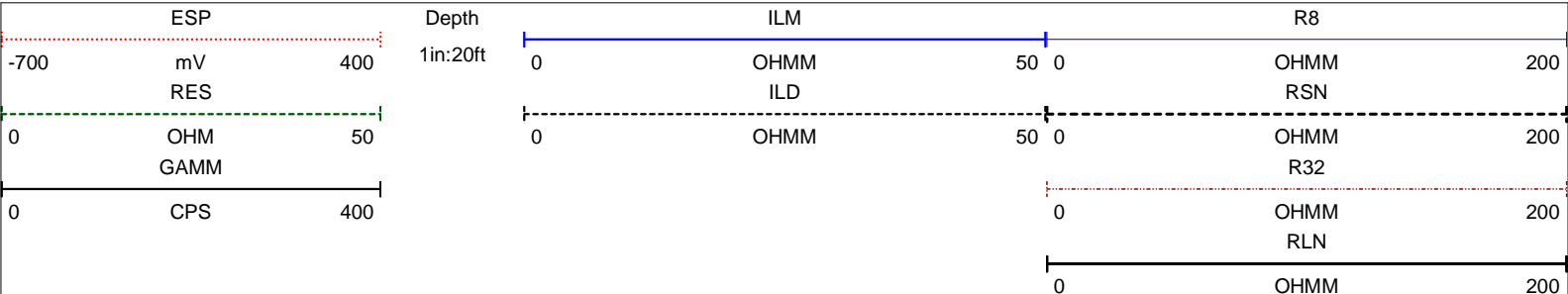
DRILLING MEASURED FROM:

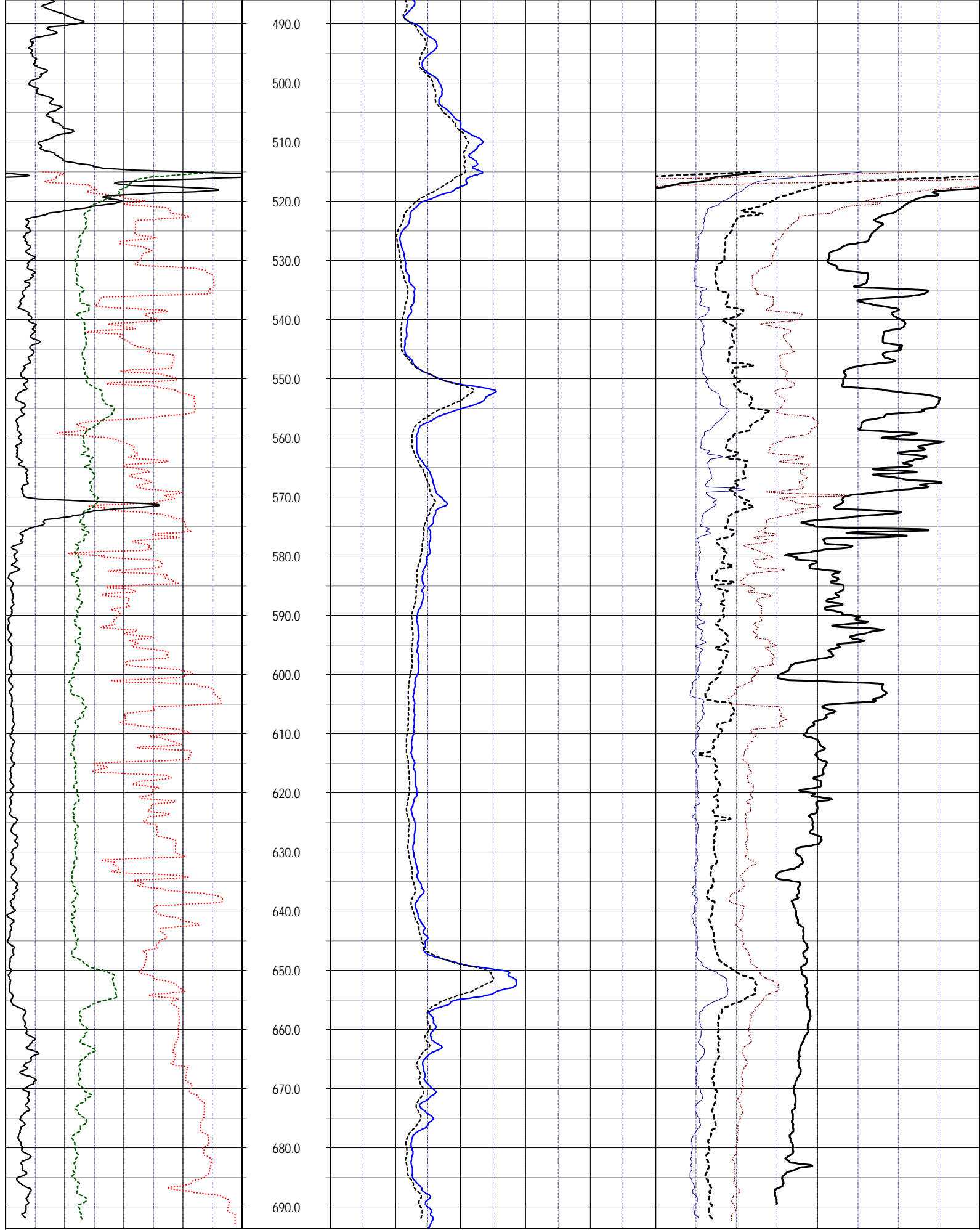
DATE	08 Nov 16	TYPE FLUID IN HOLE	WATER
RUN No	1	LOGGING SPEED (FT/MIN)	35
TYPE LOG	ELECTRIC+DUIN	TROLLING DIRECTION	UP
DEPTH-DRILLER	700	PUMPING RATE (GPM)	N/A
DEPTH-LOGGER	693		
DRILLER			
RECORDED BY	RMB		
SRVC	RMBAKER LLC	API	N/A
WITNESSED BY	SFWMD	LIC	N/A

BOREHOLE RECORD				CASING RECORD			
RUN NO.	BIT	FROM	TO	SIZE	MAT.	FROM	TO
1	7.875	475	700	8	PVC	0	475

WATER QUALITY LOG CODES

static fluid temperature	TEU	dynamic fluid conductivity	FLCP	caliper	CAL
dynamic fluid temperature	TEP	static differential cond.	DCOU	repeat designation	R
static differential temperature	DTEU	dynamic differential cond.	DCOP	natural gamma	GAMM
dynamic differential temp.	DTEP	static specific conductance	C25U		
static fluid conductivity	FLCU	dynamic specific conductance	C25P		





GAMM

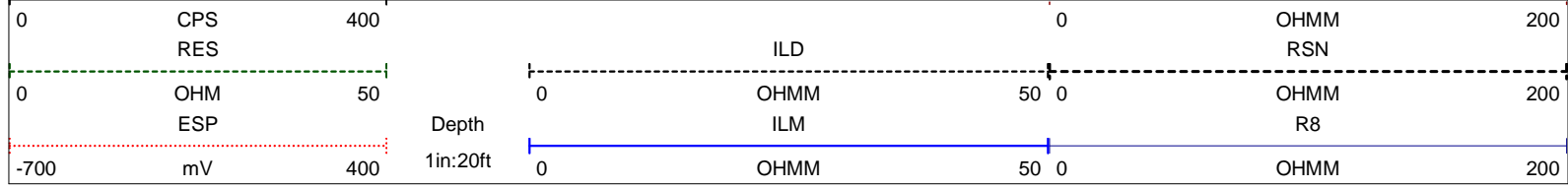
0

RLN

OHMM

R32

200



NOTES:

While due care has been exercised in the performance of these measurements and observations, in accordance with methodologies utilized by the general practitioner, RMBAKER LLC can make no representations, warranties, or guarantees with respect to latent or concealed conditions that may exist, which may be beyond the detection capabilities of the methodologies used, or that may extend beyond the areas and depths surveyed.

The geophysical well logs show subsurface conditions as they existed at the dates and locations shown, and it is not warranted that they are representative of subsurface conditions at other locations and times.

If, at any time, different subsurface conditions from those observed are determined to be present, we must be advised and allowed to review and revise our observations if necessary.

Florida Licensed Geology Business GB 458

END OF LOG



8600 Oldbridge Lane
 Orlando, FL 32819
 mobile ph 407-733-8958

LOG STAGE EXPLORATORY

rob@rmbaker.com
 www.rmbaker.com

HEADER NOTES:

COMP SFWMD
 LOC C-24 CANAL
 FLD C-24 CANAL
 CNTY ST. LUCIE
 STAT FL
 PROV FL
 CTRY USA

LATI X
 LONG Y
 GDAT WGS84 HDAT
 SEC ELEV
 TWP V DAT
 RGE
 ALL SERVICES:
 CALIPER
 NATURAL GAMMA
 ELECTRIC
 DUAL INDUCTION
 FLOWMETER
 FLUID COND & TEMP
 VIDEO

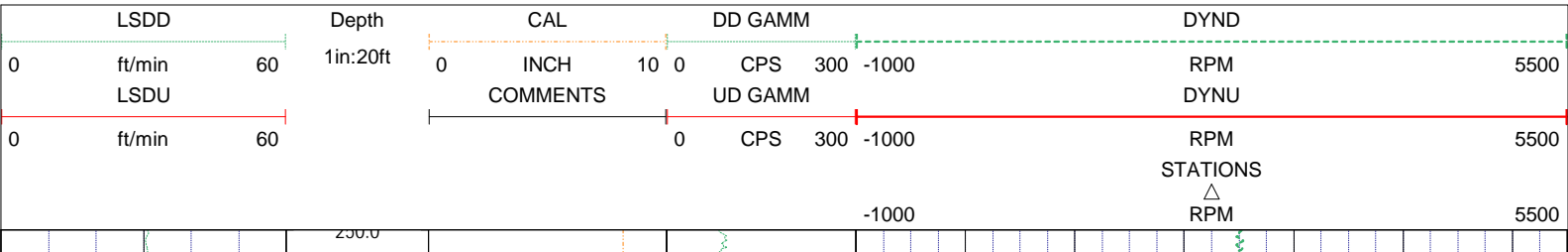
PERMANENT DATUM:
 LOG MEASURED FROM: TOP OF PAD
 DRILLING MEASURED FROM:

DATE	08 Nov 16	TYPE FLUID IN HOLE	WATER		
RUN No	1	LOGGING SPEED (FT/MIN)	30		
TYPE LOG	FLOWMETER	TROLLING DIRECTION	BOTH		
DEPTH-DRILLER	700	PUMPING RATE (GPM)	245		
DEPTH-LOGGER	693				
DRILLER					
RECORDED BY	RMB				
SRVC	RMBAKER LLC	API	N/A		
WITNESSED BY	SFWMD	LIC	N/A		
BOREHOLE RECORD					
RUN NO.	BIT	FROM	TO	CASING RECORD	
	7.875	475	700	SIZE	MAT.
				8	PVC
				FROM	TO
				0	475

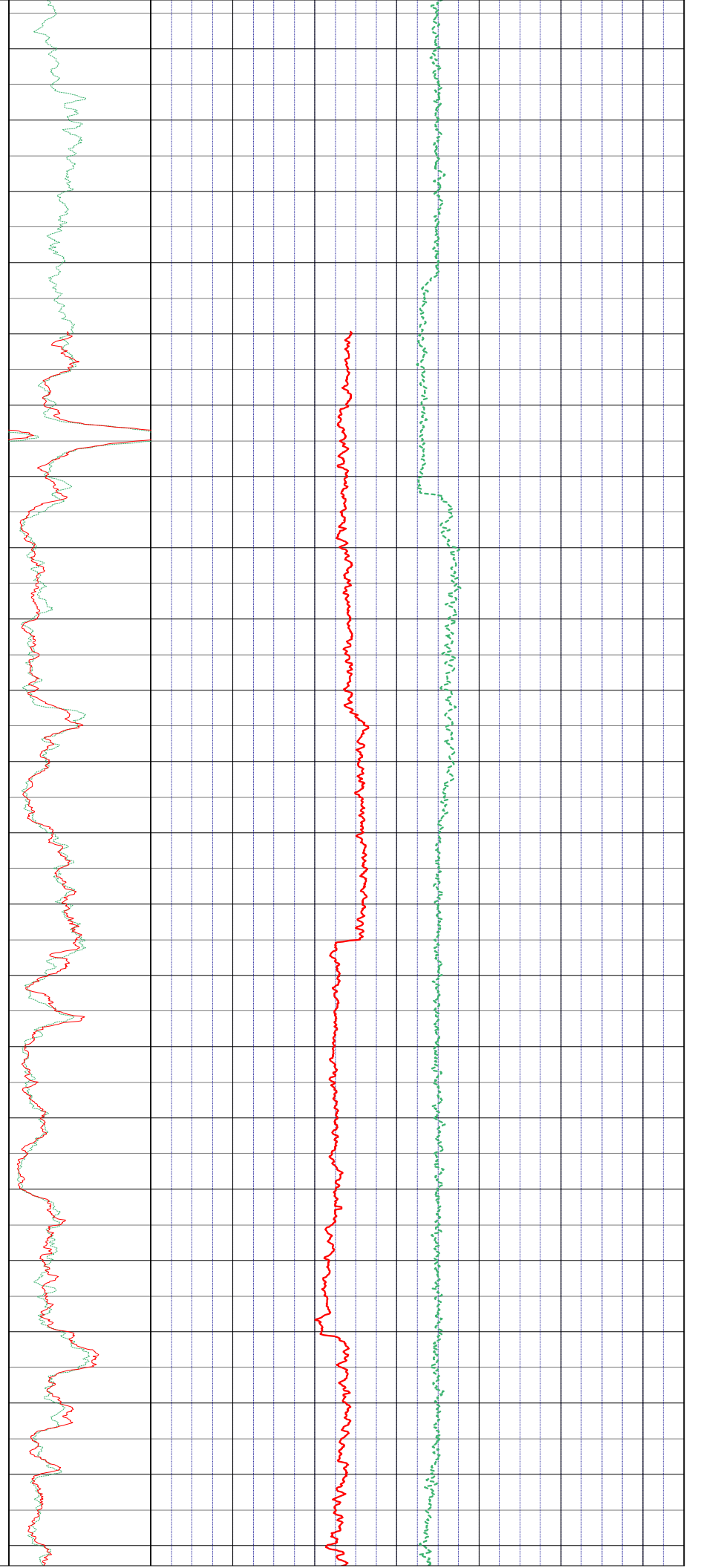
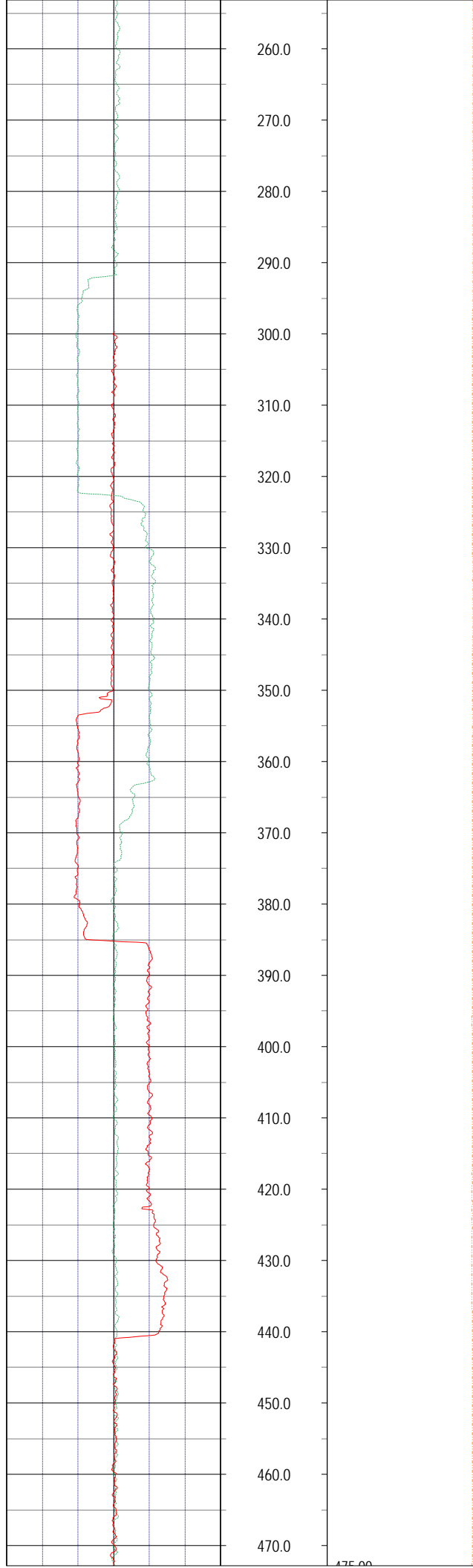
PROJECT NOTES:
 -The spinner rate curves deflect to the positive direction with increasing flow from the well.
 -The spinner rate curves are not corrected for borehole diameter.
 -The well flowed at a rate of 245 GPM.

FLOWMETER LOG CODES

down static spinner rate	FSD	down static line speed	LSSD	natural gamma (w/annot.)	GAMM
up static spinner rate	UTS	up static line speed	LSSU	caliper	CAL
down dynamic spinner rate	DYND	down dynamic line speed	LSDD	repeat designation	R
up dynamic spinner rate	DYNU	up dynamic line speed	LSDU	percent flow	PFLO
static station spinner rate	FSU	dynamic station spinner rate	FSP	GPM flow	GPMFLO

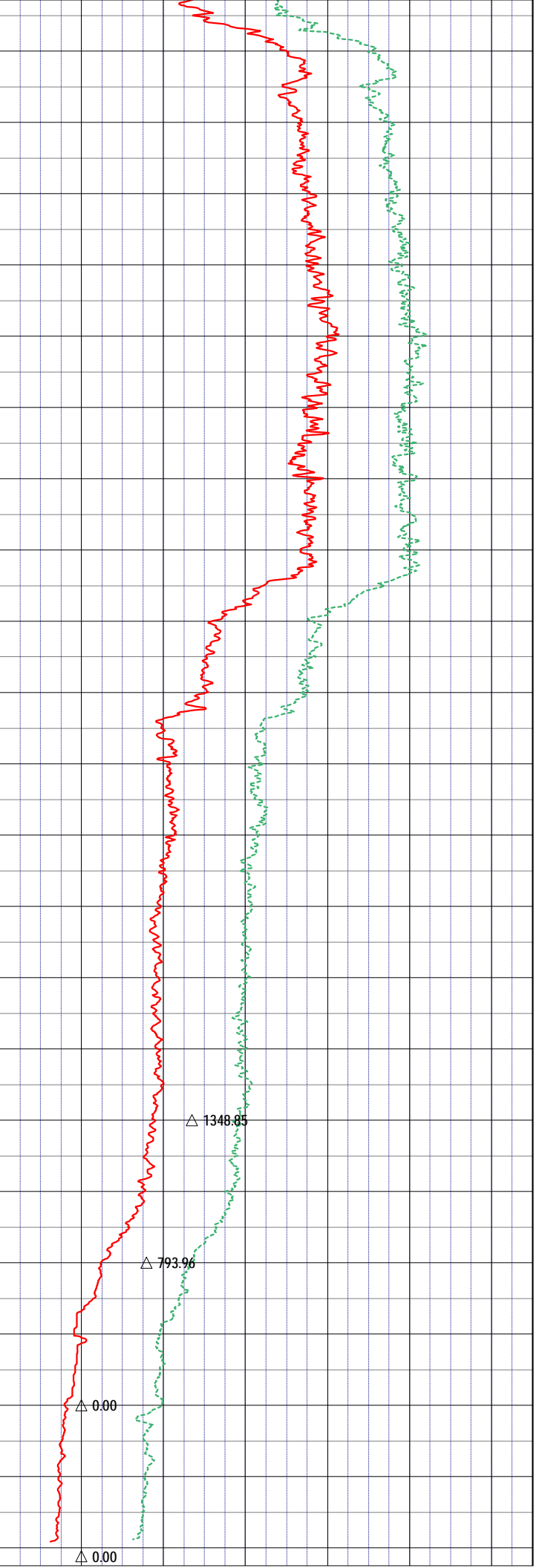
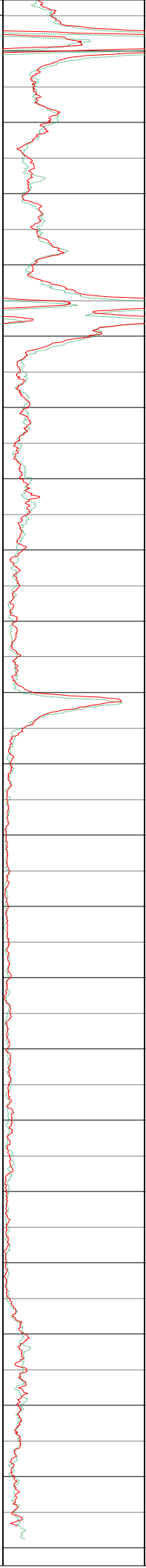
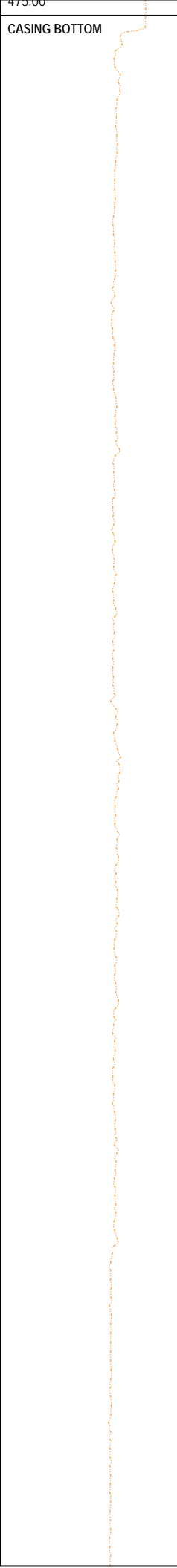


260.0
270.0
280.0
290.0
300.0
310.0
320.0
330.0
340.0
350.0
360.0
370.0
380.0
390.0
400.0
410.0
420.0
430.0
440.0
450.0
460.0
470.0



CASING BOTTOM

480.0
490.0
500.0
510.0
520.0
530.0
540.0
550.0
560.0
570.0
580.0
590.0
600.0
610.0
620.0
630.0
640.0
650.0
660.0
670.0
680.0
690.0



$\triangle 0.00$

$\triangle 0.00$

$\triangle 793.96$

$\triangle 1348.85$

										STATIONS		
										△		
										RPM		
										5500		
LSDU			COMMENTS			UD GAMM			DYNU			
0	ft/min	60				0	CPS	300	-1000		RPM	5500
LSDD			CAL			DD GAMM			DYND			
0	ft/min	60	Depth			0	CPS	300	-1000		RPM	5500
			1in:20ft			0	INCH	10	0			

NOTES:

While due care has been exercised in the performance of these measurements and observations, in accordance with methodologies utilized by the general practitioner, RMBAKER LLC can make no representations, warranties, or guarantees with respect to latent or concealed conditions that may exist, which may be beyond the detection capabilities of the methodologies used, or that may extend beyond the areas and depths surveyed.

The geophysical well logs show subsurface conditions as they existed at the dates and locations shown, and it is not warranted that they are representative of subsurface conditions at other locations and times.

If, at any time, different subsurface conditions from those observed are determined to be present, we must be advised and allowed to review and revise our observations if necessary.

Florida Licensed Geology Business GB 458

END OF LOG



RMBAKER LLC
Geology and Geophysics

WELL SLF-75
UWI SLF-75

8600 Oldbridge Lane
Orlando, FL 32819
mobile ph 407-733-8958

LOG STAGE EXPLORATORY

rob@rmbaker.com
www.rmbaker.com

HEADER NOTES:

COMP	SFWMD
LOC	C-24 CANAL
FLD	C-24 CANAL
CNTY	ST. LUCIE
STAT	FL
PROV	FL
CTRY	USA
LATI	X
LONG	Y
GDAT	WGS84
SEC	HDAT
TWP	ELEV
RGE	V DAT

ALL SERVICES:
CALIPER
NATURAL GAMMA
ELECTRIC
DUAL INDUCTION
FLOWMETER
FLUID COND & TEMP
VIDEO

PERMANENT DATUM:
LOG MEASURED FROM: TOP OF PAD

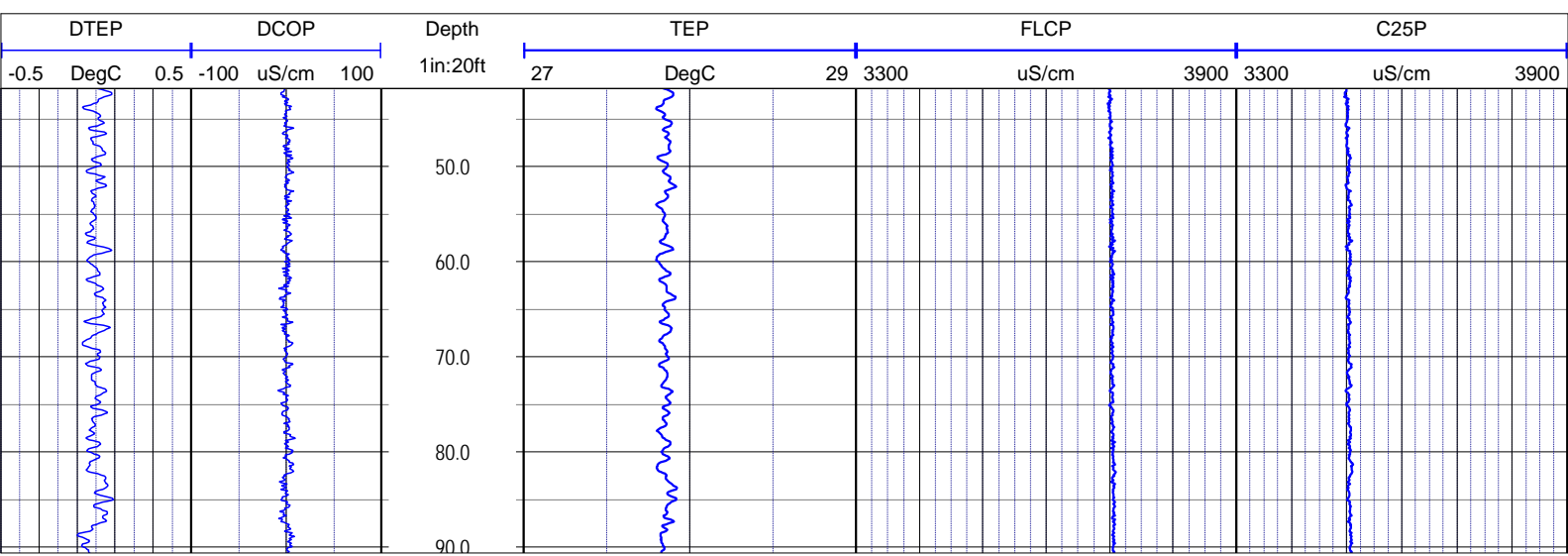
DRILLING MEASURED FROM:

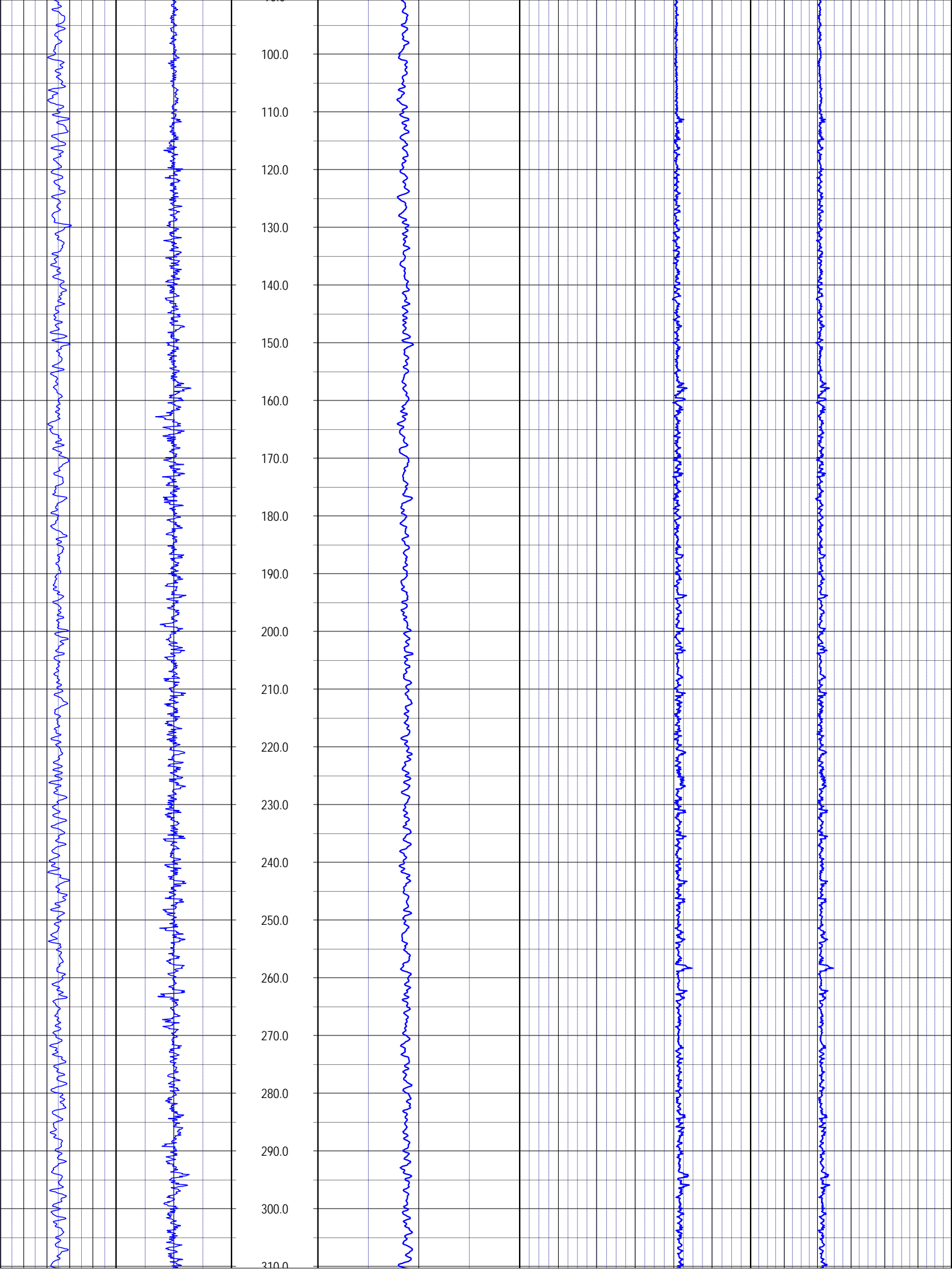
DATE	08 Nov 16	TYPE FLUID IN HOLE	WATER
RUN No	1	LOGGING SPEED (FT/MIN)	35
TYPE LOG	FLUID COND & TEMP	TROLLING DIRECTION	DOWN
DEPTH-DRILLER	700	PUMPING RATE (GPM)	245
DEPTH-LOGGER	693		
DRILLER			
RECORDED BY	RMB		
SRVC	RMBAKER LLC	API	N/A
WITNESSED BY	SFWMD	LIC	N/A

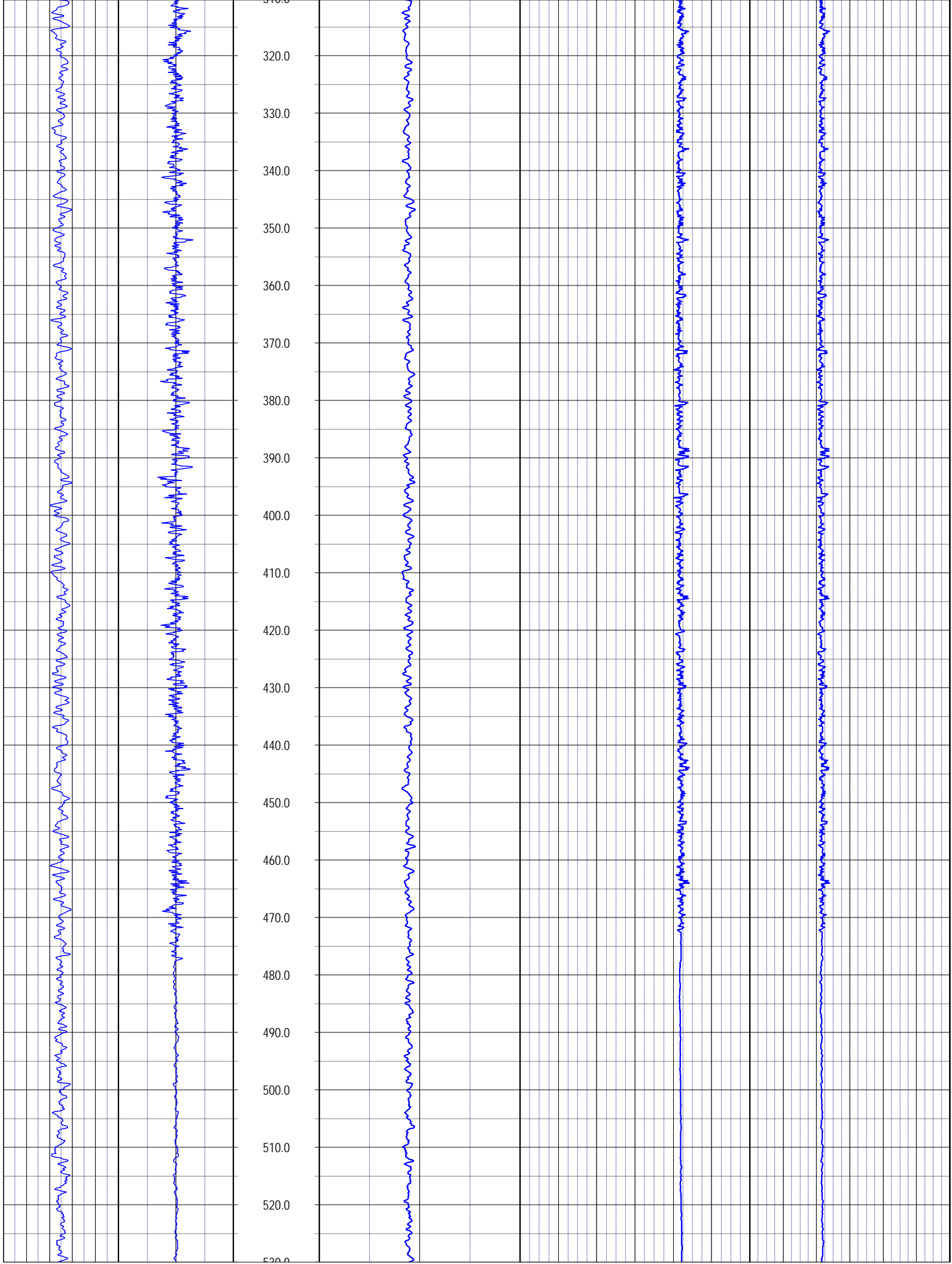
BOREHOLE RECORD		CASING RECORD					
RUN NO.	BIT	FROM	TO	SIZE	MAT.	FROM	TO
1	7.875	475	700	8	PVC	0	475

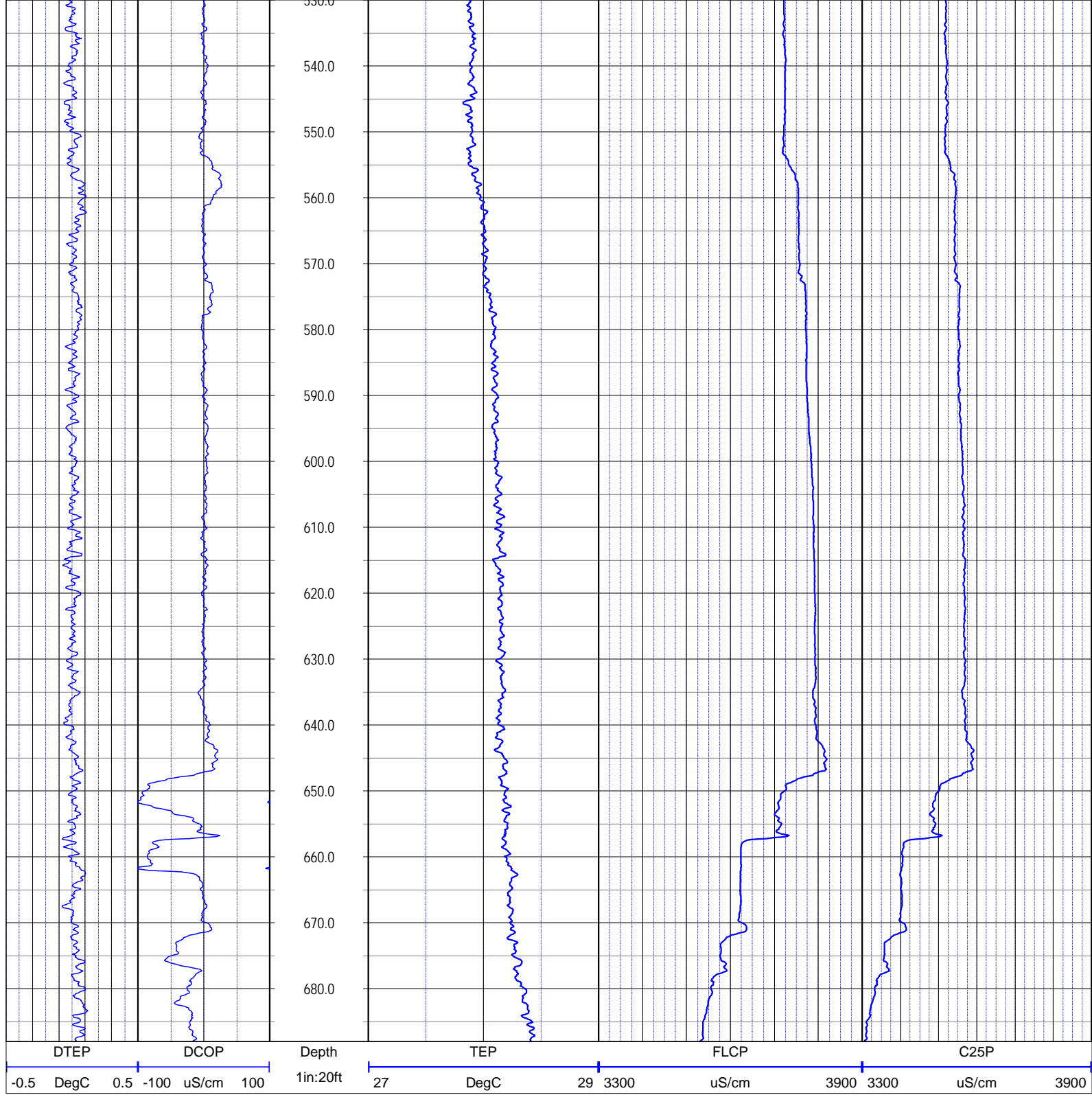
WATER QUALITY LOG CODES

static fluid temperature	TEU	dynamic fluid conductivity	FLCP	caliper	CAL
dynamic fluid temperature	TEP	static differential cond.	DCOU	repeat designation	R
static differential temperature	DTEU	dynamic differential cond.	DCOP	natural gamma	GAMM
dynamic differential temp.	DTEP	static specific conductance	C25U		
static fluid conductivity	FLCU	dynamic specific conductance	C25P		









NOTES:

While due care has been exercised in the performance of these measurements and observations, in accordance with methodologies utilized by the general practitioner, RMBAKER LLC can make no representations, warranties, or guarantees with respect to latent or concealed conditions that may exist, which may be beyond the detection capabilities of the methodologies used, or that may extend beyond the areas and depths surveyed. The geophysical well logs show subsurface conditions as they existed at the dates and locations shown, and it is not warranted that they are representative of subsurface conditions at other locations and times. If, at any time, different subsurface conditions from those observed are determined to be present, we must be advised and allowed to review and revise our observations if necessary.

Florida Licensed Geology Business GB 458

END OF LOG