



RMBAKER
Geology and Geophysics

WELL STL-213
UWI STL-213

8600 Oldbridge Lane
Orlando, FL 32819
mobile ph 407-733-8958

PROFESSIONAL LICENSES
Geologist PG2186
Licensed Geology Business

rob@rmbaker.com
www.rmbaker.com

HEADER NOTES:
NOTE THE ASSOCIATED VIDEO WAS REFERENCED TO THE TOP OF CASING 1.67 FEET ABOVE THE GROUND SURFACE

COMP	SFWMD
LOC	GORDY ROAD
FLD	UPPER EAST COAST
CNTY	ST. LUCIE
STAT	FL
PROV	FL
CTRY	USA

LATI		X			ALL SERVICES: DUAL INDUCTION NATURAL GAMMA
LONG		Y			
GDAT	WGS84	HDAT			
SEC		ELEV			
TWP		V DAT			
RGE					

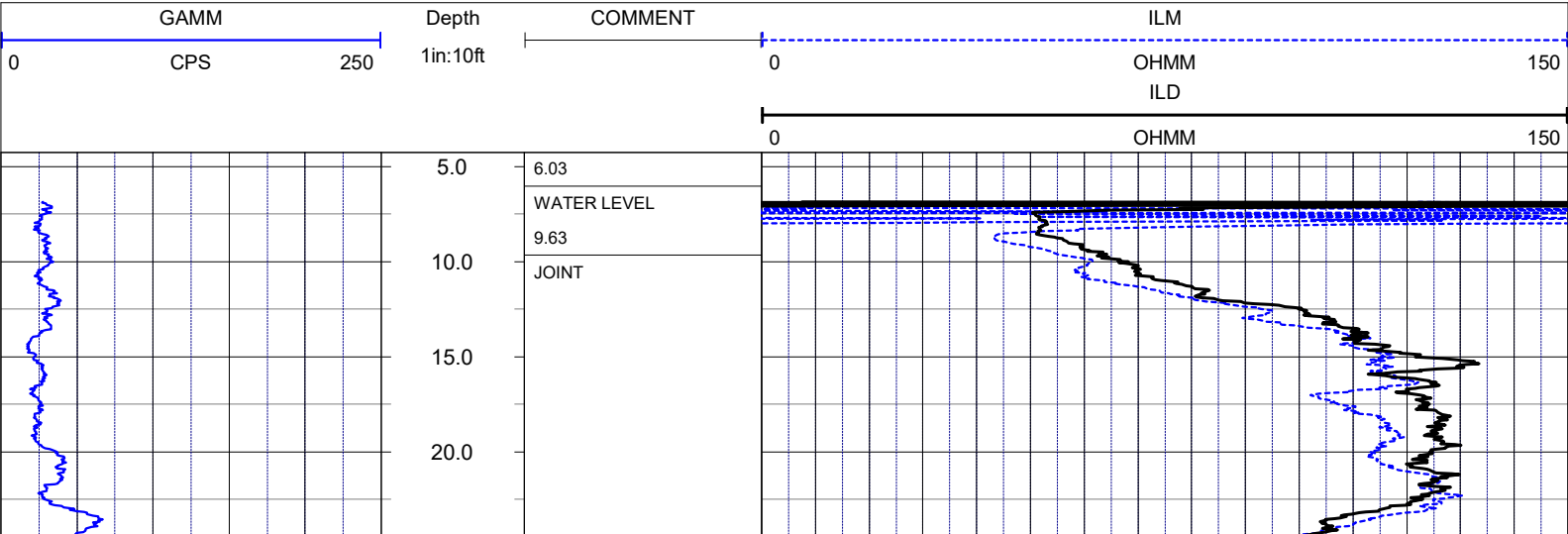
PERMANENT DATUM:
LOG MEASURED FROM: GROUND SURFACE-1.67 FT BELOW TOC
DRILLING MEASURED FROM:

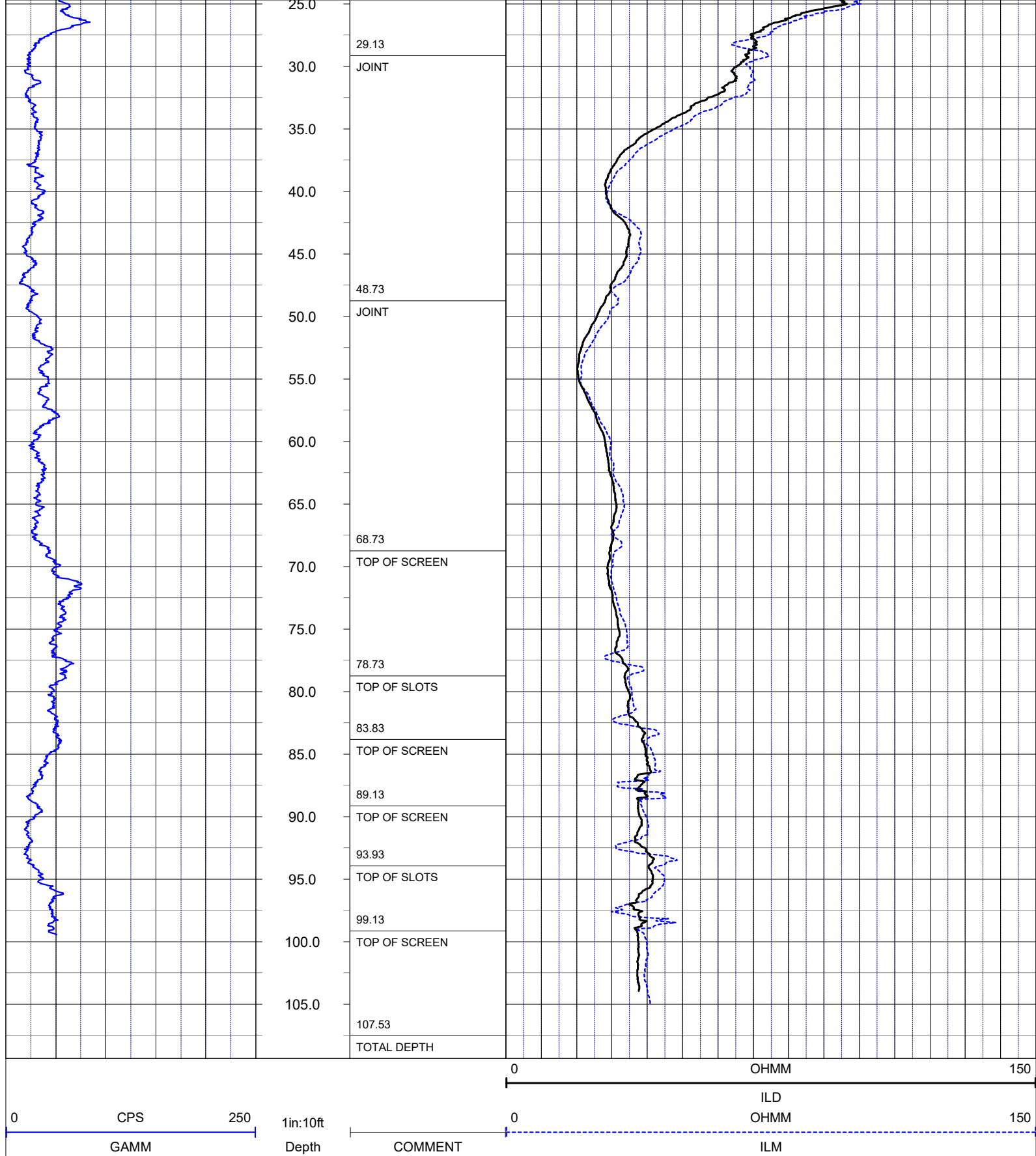
DATE	18 Feb 21	TYPE FLUID IN HOLE	WATER
RUN No	1	LOGGING SPEED (FT/MIN)	15
TYPE LOG	DUAL INDUCTION	TROLLING DIRECTION	UP
DEPTH-DRILLER	126	PUMPING RATE (GPM)	N/A
DEPTH-LOGGER	107.05		
DRILLER	N/A		
RECORDED BY	RMB		
SRVC	RMBAKER LLC	API	N/A
WITNESSED BY	SFWMD	LIC	N/A

BOREHOLE RECORD		CASING RECORD				
RUN NO.	BIT FROM	TO	SIZE	MAT.	FROM	TO
1			4	PVC	0	107.05

LOG CODES

3-arm caliper	CAL	long normal resistivity	RLN	deep induction conductivity	IDC
natural gamma (CPS)	GAMM	8 inch resistivity	R8	shallow induction conductivity	ISC
spontaneous potential	ESP	32 inch resistivity	R32	sonic interval velocity	DT
single point resistance	RES	deep induction resistivity	ILD	sonic porosity (RHG method)	SPHI
short normal resistivity	RSN	shallow induction resistivity	ILM	repeat designation	R





NOTES:
 While due care has been exercised in the performance of these measurements and observations, in accordance with methodologies utilized by the general practitioner, RMLBAKER LLC can make no representations, warranties, or guarantees with respect to latent or concealed conditions that may exist, which may be beyond the detection capabilities of the methodologies used, or that may extend beyond the areas and depths surveyed.
 The geophysical well logs show subsurface conditions as they existed at the dates and locations shown, and it is not warranted that they are representative of subsurface conditions at other locations and times. If, at any time, different subsurface conditions from those observed are determined to be present, we must be advised and allowed to review and revise our observations if necessary.

Florida Geology Business Licenced by PG2186

END OF LOG