



TEMPERATURE

COMPANY YOUNGQUIST BROTHERS DRILLING CO. INC.

WELL INJECTION WELL CO-2317

FIELD NCRMTIP

COUNTY COLLIER STATE FLORIDA

LOCATION \_\_\_\_\_ OTHER SERVICES: \_\_\_\_\_

SEC. 35 TWP. 48S RGE. 26E

PERMANENT DATUM GL ELEV. \_\_\_\_\_  
 LOG MEASURED FROM GL FT. ABOVE PERMANENT DATUM  
 DRILLING MEASURED FROM GL ELEV.: K.B. \_\_\_\_\_  
 D.F. \_\_\_\_\_  
 G.L. \_\_\_\_\_

DATE 07/26/92

TYPE LOG 1 TEMPERATURE

DEPTH-DRILLER 434

DEPTH-LOGGER 420 TO 0

LOGGED INTERVAL 420 TO 0

OPERATING RIG TIME \_\_\_\_\_ TO \_\_\_\_\_

TYPE FLUID IN HOLE MUD

SALINITY, PPM CL \_\_\_\_\_

DENSITY-VISCOSITY \_\_\_\_\_

LEVEL FULL

MAX. REC. TEMP. DEG. F. \_\_\_\_\_

EQUIPMENT-LOCATION POMPANO BEACH

RECORDED BY SALVO

WITNESSED BY G KENNEDY

BOREHOLE RECORD

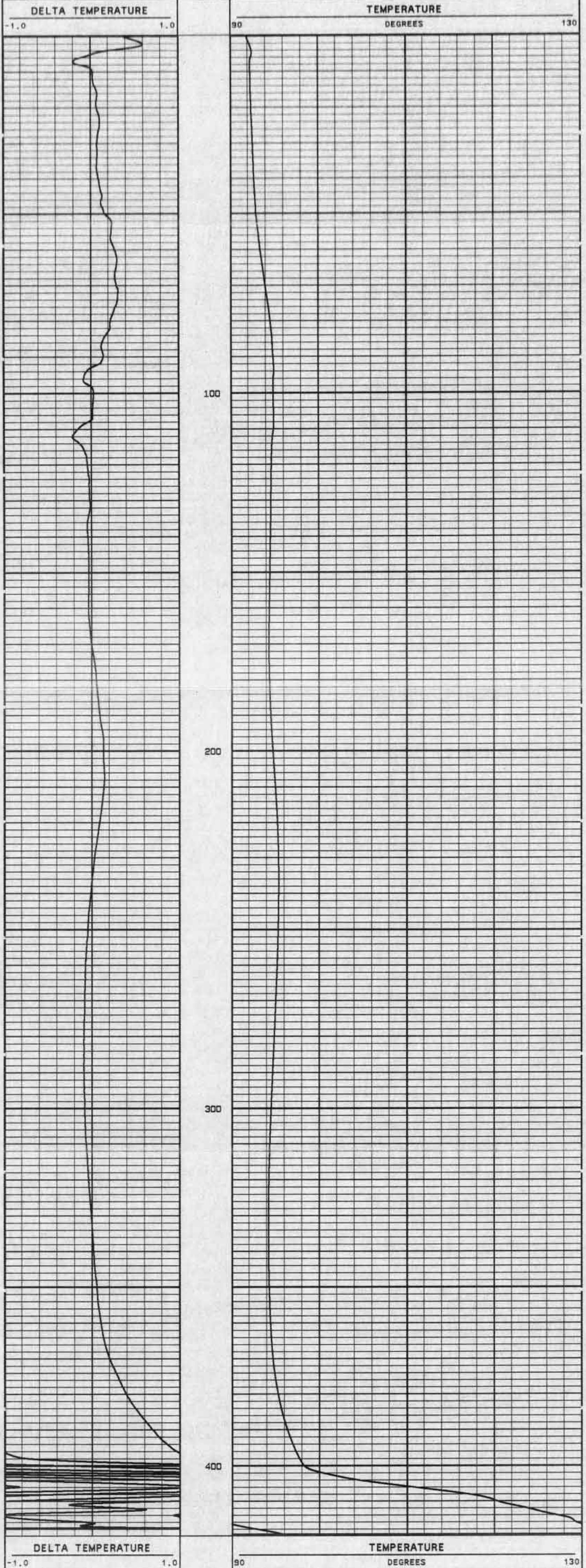
RUN NO.	BIT	FROM	TO	SIZE	CASING RECORD	MGT.	FROM	TO

ALL INTERPRETATIONS ARE OPINIONS BASED ON INFERENCES FROM ELECTRICAL OR OTHER MEASUREMENTS AND WE CANNOT AND DO NOT GUARANTEE THE ACCURACY OR CORRECTNESS OF ANY INTERPRETATION, AND WE SHALL NOT, EXCEPT IN THE CASE OF GROSS OR WILLFULL NEGLIGENCE ON OUR PART, BE LIABLE OR RESPONSIBLE FOR ANY LOSS, COSTS, DAMAGES, OR EXPENSES INCURRED OR SUSTAINED BY ANYONE RESULTING FROM ANY INTERPRETATION MADE BY ANY OF OUR OFFICERS, AGENTS OR EMPLOYEES. THESE INTERPRETATIONS ARE ALSO SUBJECT TO OUR GENERAL TERMS AND CONDITIONS SET OUT IN OUR CURRENT PRICE SCHEDULE.

VERSION: 1.70

NI2

FINISH DEPTH: 421.2 FEET DIRECTION: DOWN DATE: 07/26/92 TIME: 08:08 MODE: TRACE PLAYBACK



START DEPTH: 0.6 FEET DIRECTION: DOWN DATE: 07/26/92 TIME: 07:55 MODE: TRACE PLAYBACK

NI2

VERSION: 1.70

COMPANY YOUNGQUIST BROTHERS DRILLING CO. INC.  
 WELL INJECTION WELL CO-2317  
 FIELD COLLIER CO. STATE FLORIDA

