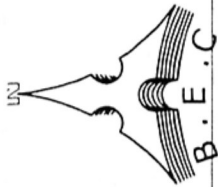
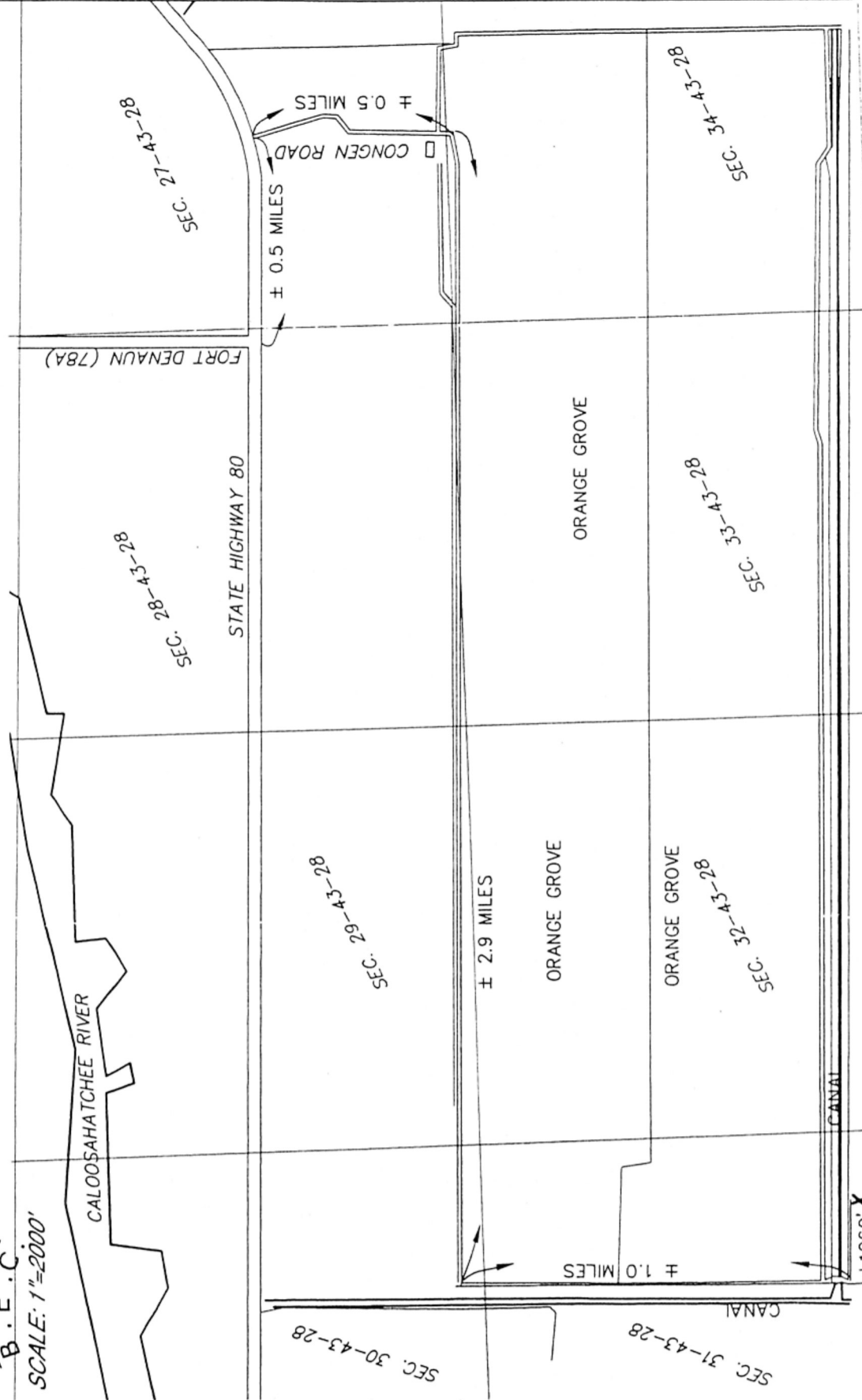


APPENDIX 2-1
SITE SURVEY – AS-BUILT DRAWINGS

MONTFORT WELLS
AS-BUILT
 HENDRY COUNTY



SCALE: 1"=2000'



LOCATION SKETCH
 HENDRY COUNTY

SEC. 31 TWP 43 RNG 28
 SHEET 1 OF 2

ORDER No.	03-75836
FIELD BOOK No.	2407-70
DATE:	06-07-03
FOR: DIVERSIFIED DRILLING CO.	

BISCAYNE ENGINEERING COMPANY, INC.
 Consulting Engineers • Planners • Surveyors

FT. LAUDERDALE
 6561 SUNSET STRIP
 SUNRISE, FLORIDA 33313
 PH (305) 748-1800
 FAX (305) 749-5628



MIAMI
 529 WEST FLAGLER STREET
 FLORIDA, 33130
 PH (305) 324-7671
 FAX (305) 324-0809

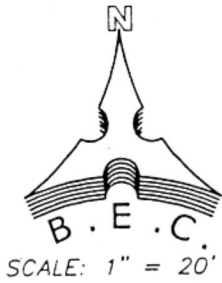
WEB SITE: www.biscayneengineering.com
 E-MAIL: info@biscayneengineering.com

FOUNDED 1898

MONITORING WELL

AS-BUILT

HENDRY COUNTY



ELEVATIONS

SMW#2
2" PVC=24.32'
LID= 24.65'

ELEVATIONS

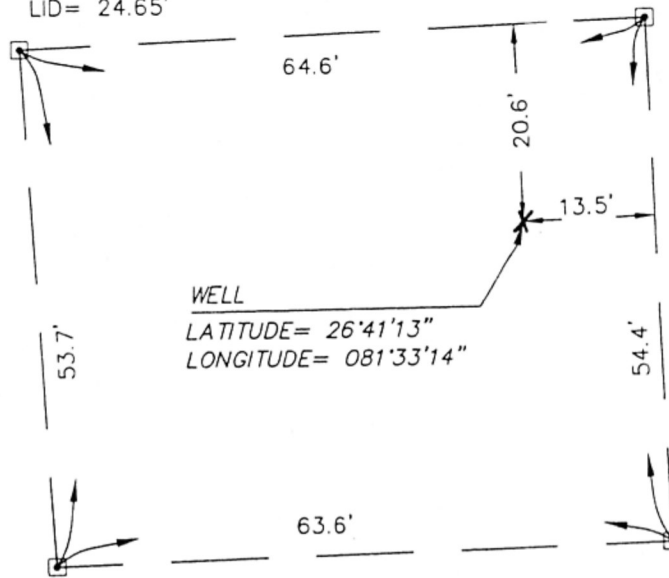
SMW#1
2" PVC=24.67'
LID= 25.06'

ELEVATIONS

SMW#4
2" PVC=24.69'
LID= 25.11'

ELEVATIONS

SMW#3
2" PVC=24.51'
LID= 24.95'

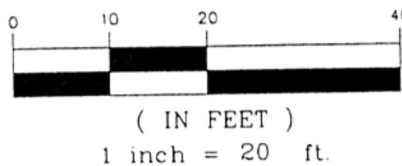


MONITORING WELLS

- ELEVATIONS SHOWN ARE ON THE BASIS OF NATIONAL GEODETIC VERTICAL DATUM (N.G.V.D.) (1929)
- BENCH MARK: ELEVATION= 17.79' NGVD 29
DESIGNATION - B 415
PID - AD8285
STATE/COUNTY-FL/HENDRY
USGS QUAD - SEARS (1973)
NAD 83(1999) - LAT.=26°43'24"(N), LONG.= 081°29'26"(W)

ELEV. = ELEVATION
X 0.00 = ELEVATION
LAT. = LATITUDE
LONG. = LONGITUDE
NAD = NORTH AMERICAN DATUM
SEC. = SECTION
TWP = TOWNSHIP
RNG = RANGE
TYP. = TYPICAL
NGVD = NATIONAL GEODETIC VERTICAL DATUM

GRAPHIC SCALE



SITE PLAN SKETCH

HENDRY COUNTY

SEC. 31 TWP 33 RNG 28

SHEET 2 OF 2

ORDER No.	03-76836
FIELD BOOK No.	2407-70
DATE:	06-07-03
FOR: DIVERSIFIED DRILLING CO.	



BISCAYNE ENGINEERING COMPANY, INC.

Consulting Engineers · Planners · Surveyors

MIAMI
529 WEST FLAGLER STREET
FLORIDA, 33130
PH. (305) 324-7671
FAX (305) 324-0809

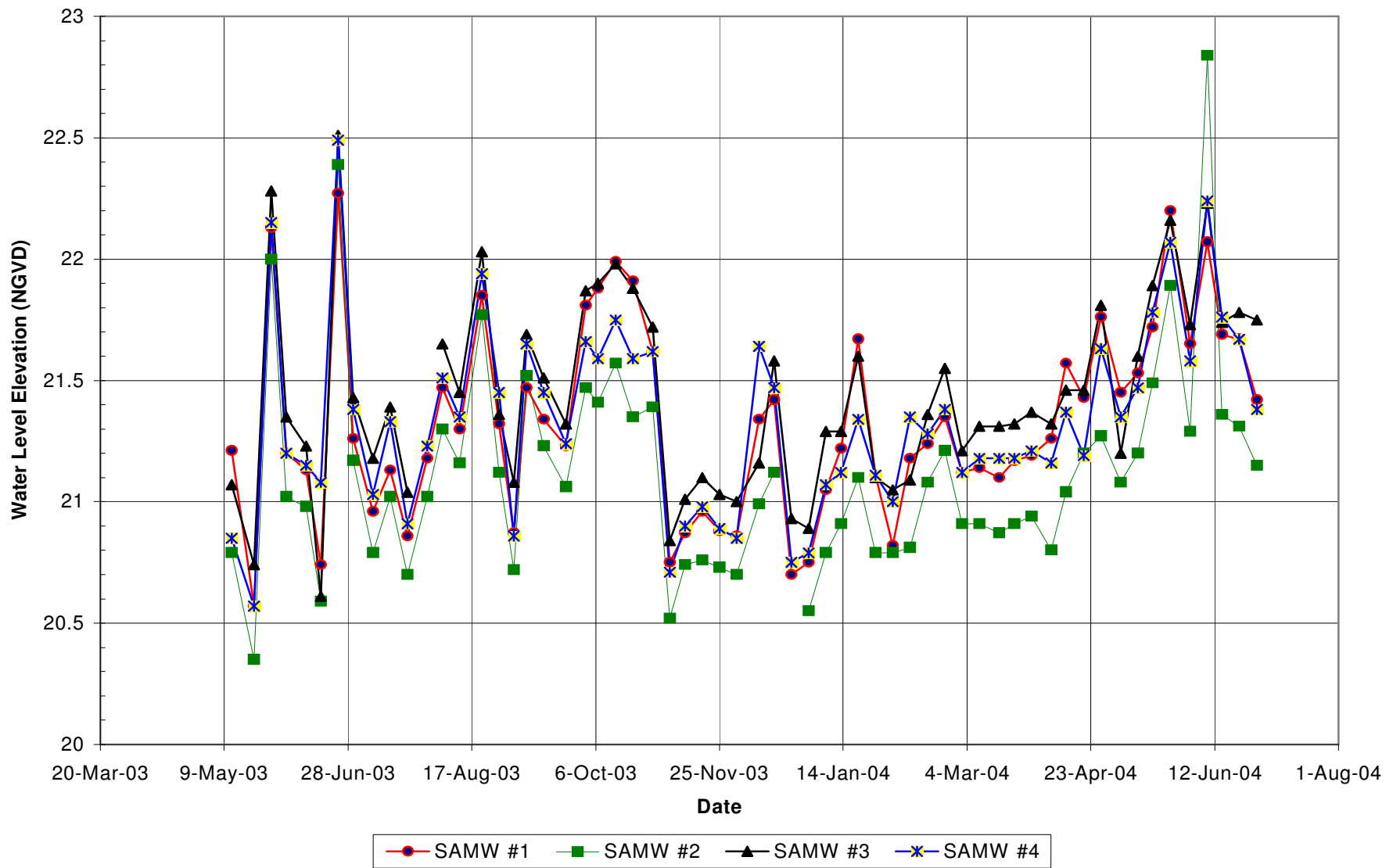
WEB SITE www.biscayneengineering.com
E-MAIL info@biscayneengineering.com

FT. LAUDERDALE
6561 SUNSET STRIP
SUNRISE, FLORIDA 33313
PH (305) 748-1800
FAX (305) 749-5628

DRAWING No. 2003-50-2C

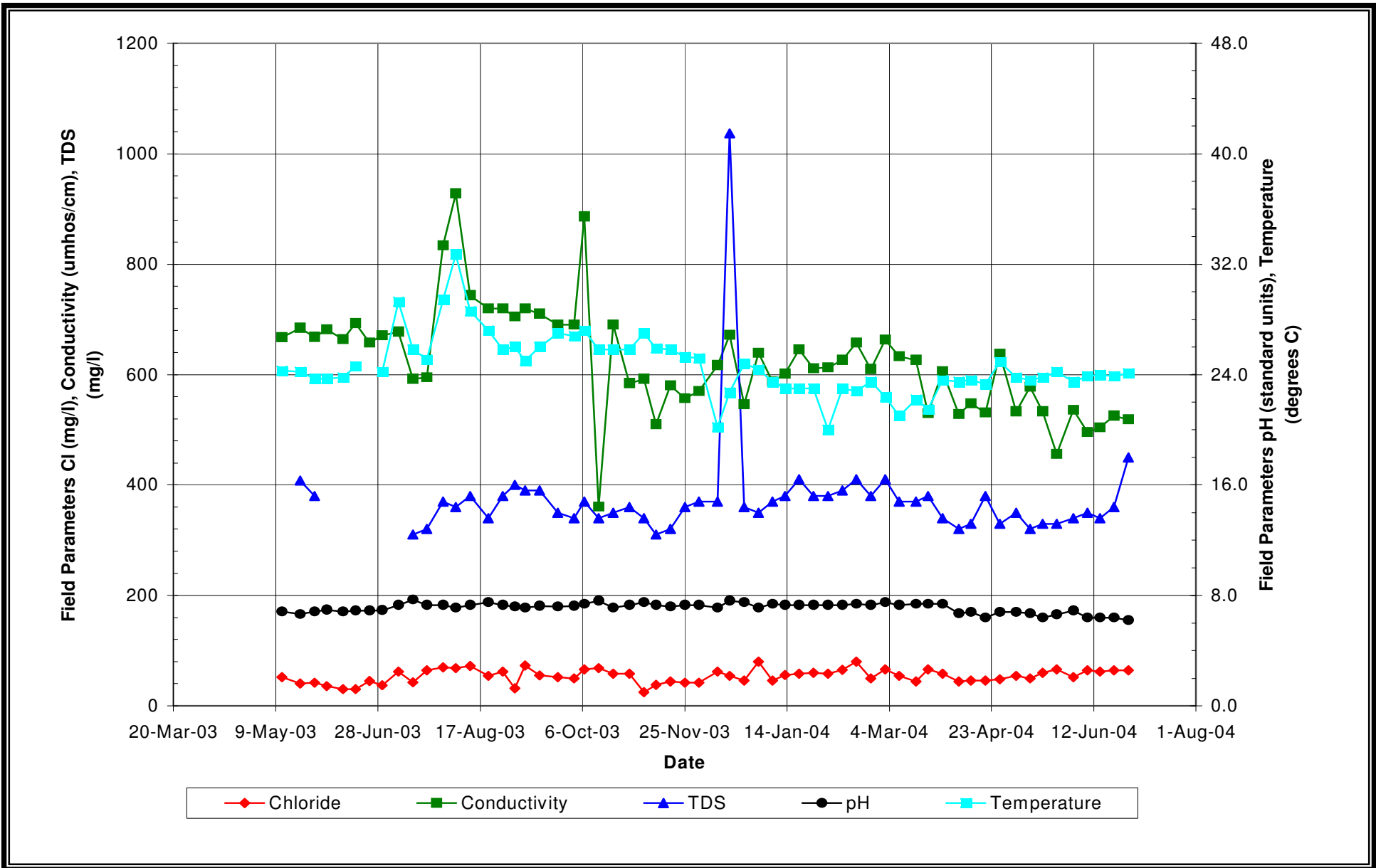
APPENDIX 2-2A

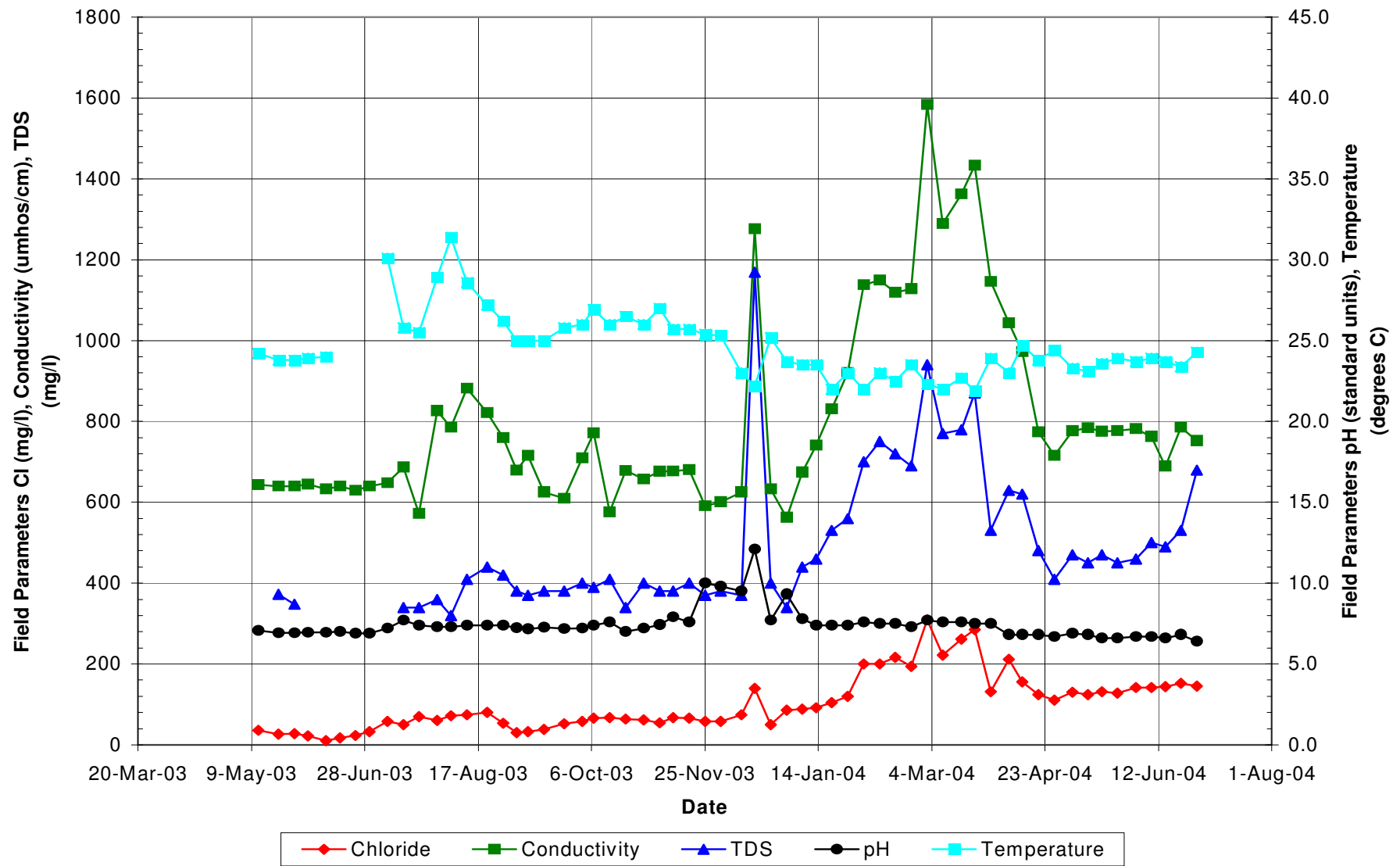
WEEKLY PAD MONITORING WELL WATER LEVEL RESULTS

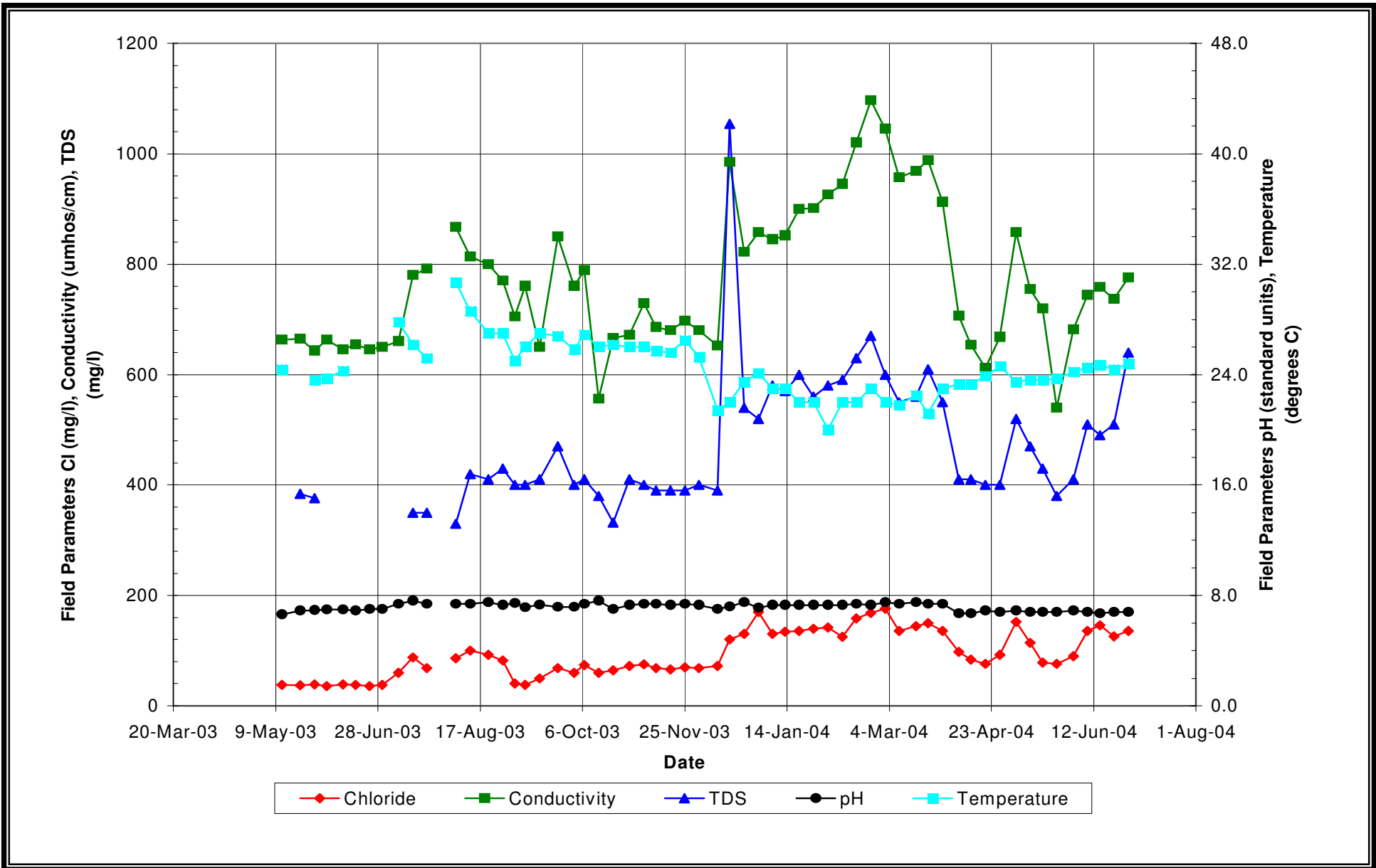


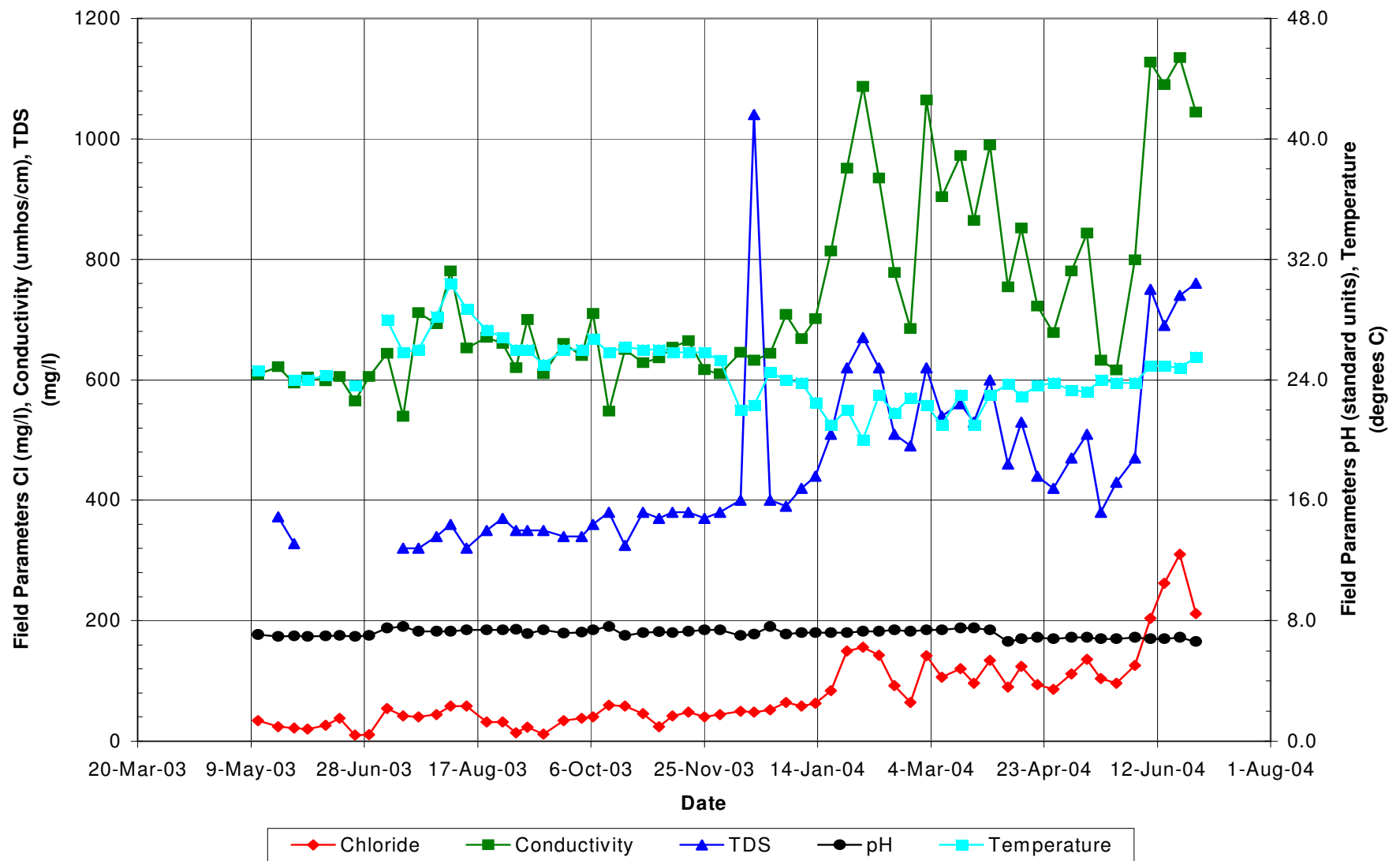
APPENDIX 2-2B

**WEEKLY PAD MONITORING WELL
WATER SAMPLING RESULTS**









APPENDIX 2-2C

**WEEKLY PAD MONITORING WELL
WATER QUALITY SUMMARIES**

WATER RESOURCE SOLUTIONS, INC.

CALOOSAHATCHEE ASR
EXPLORATORY WELL EXBRY-1
PAD MONITOR WELL WATER QUALITY
(field determined)

South Florida Water Management District
Berry Grove ASR Exploratory Well

Project No. 01-04340.A 11

FDEP Permit No. 201247 -001-UC Contractor: Diversified Drilling Corporation

Prepared by: G. Susdorf

Sample Date: 5/12/03

Week # 1

WELL NUMBER:	SAMW#1	SAMW#2	SAMW#3	SAMW#4
LOCATION	NE CORNER	NW CORNER	SE CORNER	SW CORNER
ELEVATION OF TOC" (NGVD)	T80**	T80**	T80**	TBD"
DEPTH TO WATER (TOC")	3.46	3.53	3.44	3.84
WATER LEVEL (NGVD)	T80**	T80**	T80**	T80**
CHLORIDE (moll)	52	36	38	34
CONDUCTIVITY (umhos/cm)	667	643	663	609
pH (standard units)	6.84	7.08	6.62	7.08
TOTAL DISSOLVED SOLIDS (moll)	TBD	TBD	TBD	TBD
TEMPERATURE (OC)	24.3	24.2	24.4	24.6

"TOC: indicates the "top of the casing" of the Surficial Aquifer Monitoring Well:

"The elevations had not yet been determined at the time of sampling

WATER RESOURCE SOLUTIONS, INC.

CALOOSAHATCHEE RIVER ASR
EXPLORATORY WELL EXBRY-1
PAD MONITOR WELL WATER QUALITY

South Florida Water Management District
Berry Grove ASR Exploratory Well

Project No. 01-04340.A 11

FDEP Permit No. 201247 -001-UC

Contractor: Diversified Drilling Corporation

Prepared by: G. Susdorf

Sample Date: 5/21/03

Week#2

WELL NUMBER:	SAMW#1	SAMW#2	SAMW#3	SAMW#4
LOCATION	NE CORNER	NW CORNER	SE CORNER	SW CORNER
ELEVATION OF TOC' (NGVD)	TBD"	TBD"	T8D**	TBD"
DEPTH TO WATER (TOC')	4.10	3.97	3.77	4.12
WATER LEVEL (NGVD)	T8D**	TBD"	T8D**	T8D**
CHLORIDE (mg/l)	40	27	37	24
CONDUCTIVITY (umhos/cm)	684	640	665	621
pH (standard units)	6.64	6.93	6.90	6.94
TOTAL DISSOLVED SOLIDS (mg/l)	408	372	384	372
TEMPERATURE (OC)	24.2	23.8	NR	NR

'TOC: indicates the "top of the casing" of the Surficial Aquifer Monitoring Well
"The elevations had not yet been determined at the time of sampling

WATER RESOURCE SOLUTIONS, INC.

CALOOSAHATCHEE RIVER ASR
EXPLORATORY WELL EXBRY-1
PAD MONITOR WELL WATER QUALITY
(laboratory determined)

South Florida Water Management District
Berry Grove ASR Exploratory Well

Project No. 01-04340.A11

FDEP Permit No. 201247 -001-UC

Contractor: Diversified Drilling Corporation

Prepared by: G. Susdorf

Sample Date: 5/28/03

Week#3

WELL NUMBER:	SAMW#1	SAMW#2	SAMW#3	SAMW#4
LOCATION	NE CORNER	NW CORNER	SE CORNER	SW CORNER
ELEVATION OF TOC (NGVD)	TBD**	TBD-	TBD**	TBD**
DEPTH TO WATER (TOC)	2.54	2.32	2.23	2.54
WATER LEVEL (NGVD)	TBD*	TBD**	TBD-	TBD**
CHLORIDE (mg/l)	42	28	39	22
CONDUCTIVITY (µmhos/cm)	668	640	643	594
pH (standard units)	6.84	6.91	6.92	6.99
TOTAL DISSOLVED SOLIDS (mg/l)	380	348	376	328
TEMPERATURE (field °C)	23.7	23.8	23.6	24.0

"TOC: indicates the "top of the casing" of the Surficial Aquifer Monitoring Well

**The elevations had not yet been determined at the time of sampling

WATER RESOURCE SOLUTIONS, INC.

CALOOSAHATCHEE RIVER ASR
EXPLORATORY WELL EXBRY-1
PAD MONITOR WELL WATER QUALITY
(field determined)

South Florida Water Management District
Berry Grove ASR Exploratory Well

Project No. 01-04340.A11

FDEP Permit No. 201247 -001-UC Contractor: Diversified Drilling Corporation

Prepared by: G. Richardson

Sample Date: 6/3/03

Week#4

WELL NUMBER:	SAMW#1	SAMW#2	SAMW#3	SAMW#4
LOCATION	NE CORNER	NW CORNER	SE CORNER	SW CORNER
ELEVATION OF TOC' (NGVD)	TBD"	TBD"	TBD"	TBD"
DEPTH TO WATER (TOC')	347	3.30	3.16	349
WATER LEVEL (NGVD)	TBD**	TBD**	TBD"	TBD"
CHLORIDE (mg/l)	36	22	36	20
CONDUCTIVITY (umhos/cm)	682	645	663	604
pH (standard units)	6.96	6.94	6.97	6.96
TOTAL DISSOLVED SOLIDS (mg/l)	TBD	TBD	TBD	TBD
TEMPERATURE (OC)	23.72	23.86	23.70	2402

*TOC: indicates the "top of the casing" of the Surficial Aquifer Monitoring Well

**The elevations had not yet been determined at the time of sampling

WATER RESOURCE SOLUTIONS, INC.

CALOOSAHATCHEE RIVERASR
EXPLORATORY WELL EXBRY-1
PAD MONITOR WELL WATER QUALITY
(field determined)

South Florida Water Management District
Berry Grove ASR Exploratory Well

Project No. 01-04340.A11

FDEP Permit No. 201247 -OOI-UC

Contractor: Diversified Drilling Corporation

Prepared by: G. Richardson

Sample Date: 6/11/03

Week#5

WELL NUMBER:	SAMW#1	SAMW#2	SAMW#3	SAMW#4
LOCATION	NE CORNER	NW CORNER	SE CORNER	SW CORNER
ELEVATION OF TOC' (NGVD)	TBD**	TBD"	TBD**	TBD**
DEPTH TO WATER (TOC')	3.54	3.34	3.28	3.54
WATER LEVEL (NGVD)	TBD"	TBD"	TBD**	TBD**
CHLORIDE (mall)	30	10	39	26
CONDUCTIVITY (umhos/cm)	664	633	645	598
pH (standard units)	6.84	6.94	6.97	6.98
TOTAL DISSOLVED SOLIDS (mall)	TBD	TBD	TBD	TBD
TEMPERATURE (OC)	23.79	24.03	24.33	24.25

*TOC: indicates the "top of the casing" of the Surficial Aquifer Monitoring Well

**The elevations had not yet been determined at the time of sampling

WATER RESOURCE SOLUTIONS, INC.

CALOOSAHATCHEE RIVERASR
EXPLORATORY WELL EXBRY-1
PAD MONITOR WELL WATER QUALITY
(field determined)

South Florida Water Management District
Berry Grove ASR Exploratory Well

Project No. 01-04340.A11

FDEP Permit No. 201247 -001-UC

Contractor: Diversified Drilling Corporation

Prepared by: G. Richardson

Sample Date: 6/17/03

Week#6

WELL NUMBER:	SAMW#1	SAMW#2	SAMW#3	SAMW#4
LOCATION	NE CORNER	NW CORNER	SE CORNER	SW CORNER
ELEVATION OF TOC" (NGVD)	24.67	24.32	24.51	24.69
DEPTH TO WATER (TOC")	3.93	3.73	3.90	3.61
WATER LEVEL (NGVD)	20.74	20.59	20.61	21.08
CHLORIDE (mg/l)	30	18	38	38
CONDUCTIVITY (umhos/cm)	693	640	655	605
pH (standard units)	6.9	7.0	6.9	7.0
TOTAL DISSOLVED SOLIDS (mg/l)	TBD	TBD	TBD	TBD
TEMPERATURE (OC)	24.61	No Data	No Data	No Data

"TOC : indicates the "tap of the casing" of the Surficial Aquifer Monitoring Well

WATER RESOURCE SOLUTIONS, INC.

CALOOSAHATCHEE RIVERASR
EXPLORATORY WELL EXBRY-1
PAD MONITOR WELL WATER QUALITY
(field determined)

South Florida Water Management District

Berry Grove ASR Exploratory Well

Project No. 01-04340.A11

FDEP Permit No. 201247 -OOI-UC

Contractor: Diversified Drilling Corporation

Prepared by: G. Richardson

Sample Date: 6/24/03

Week#7

WELL NUMBER	SAMW#1	SAMW#2	SAMW#3	SAMW#4
LOCATION	NE CORNER	NW CORNER	SE CORNER	SW CORNER
ELEVATION OF TOC' (NGVD)	24.67	24.32	24.51	24.69
DEPTH TO WATER (TOC')	2.40	1.93	2.00	2.20
WATER LEVEL (NGVD)	22.27	22.39	22.51	22.49
CHLORIDE (mg/l)	45	23	36	10
CONDUCTIVITY (umhos/cm)	658	630	645	565
pH (standard units)	6.9	6.9	7.0	6.96
TOTAL DISSOLVED SOLIDS (moll)	TBD	TBD	TBD	TBD
TEMPERATURE (OC)	No Data	No Data	No Data	23.55

*TOC: indicates the "top of the casing" of the Surficial Aquifer Monitoring Well

WATER RESOURCE SOLUTIONS, INC.

CALOOSAHATCHEE RIVER ASR
EXPLORATORY WELL EXBRY-1
PAD MONITOR WELL WATER QUALITY
(field determined)

South Florida Water Management District

Berry Grove ASR Exploratory Well

Project No. 01-04340.A 11

FDEP Permit No. 201247 -001-UC

Contractor: Diversified Drilling Corporation

Prepared by: G. Richardson

Sample Date: 6/30/03

Week#8

WELL NUMBER	SAMW#1	SAMW#2	SAMW#3	SAMW#4
LOCATION	NE CORNER	NW CORNER	SE CORNER	SW CORNER
ELEVATION OF TOC' (NGVD),	24.67	24.32	24.51	24.69
DEPTH TO WATER (TOC'),	341	3.15	3.08	3.31
WATER LEVEL (NGVD),	21.26	2117	2143	21.38
CHLORIDE (mM),	37	32	38	11
CONDUCTIVITY (µmhos/cm),	671	640	650	605
pH (standard units),	6.92	6.9	7.0	7.0
TOTAL DISSOLVED SOLIDS (mM),	TBD	TBD	TBD	TBD
TEMPERATURE (OC)	24.15	No Data	No Data	No Data

*TOC: indicates the "top of the casing" of the Surficial Aquifer Monitoring Well

WATER RESOURCE SOLUTIONS, INC.

CALOOSAHATCHEE RIVER ASR
EXPLORATORY WELL EXBRY-1
PAD MONITOR WELL WATER QUALITY
(field determined)

South Florida Water Management District
Berry Grove ASR Exploratory Well

Project No. 01-04340.A 11

FDEP Permit No. 201247 -OOI-UC

Contractor: Diversified Drilling Corporation

Prepared by: G. Susdorf

Sample Date: 7/8/03

Week # 9

WELL NUMBER:	SAMW#1	SAMW#2	SAMW#3	SAMW#4
LOCATION	NE CORNER	NW CORNER	SE CORNER	SW CORNER
ELEVATION OF TOC' (NGVD)	24.67	24.32	24.51	24.69
DEPTH TO WATER (TOC')	3.71	3.53	3.33	3.66
WATER LEVEL (NGVD)	20.96	20.79	21.18	21.03
CHLORIDE (moll)	62	58	60	54
CONDUCTIVITY (µmhos/cm)	677	648	660	644
PH (standard units)	7.3	7.2	7.4	7.5
TOTAL DISSOLVED SOLIDS (mg/l)	N/A	N/A	N/A	N/A
TEMPERATURE (OC)	29.3	30.1	27.8	28.0

*TOC: indicates the "top of the casing" of the Surficial Aquifer Monitoring Well

WATER RESOURCE SOLUTIONS, INC.

CALOOSAHATCHEE RIVER ASR
EXPLORATORY WELL EXBRY-1
PAD MONITOR WELL WATER QUALITY
(field determined)

South Florida Water Management District

Berry Grove ASR Exploratory Well

Project No. 01-04340.A11

FDEP Permit No. 201247 -OOI-UC

Contractor: Diversified Drilling Corporation

Prepared by: G. Susdorf

Sample Date: 7/15/03

Week # 10

WELL NUMBER:	SAMW#1	SAMW#2	SAMW#3	SAMW#4
LOCATION	NE CORNER	NW CORNER	SE CORNER	SW CORNER
ELEVATION OF TOC" INGVDI	24.67	24.32	24.51	24.69
DEPTH TO WATER (TOC")	3.54	3.30	3.12	3.43
WATER LEVEL (NGVD)	21.13	21.02	21.39	21.33
CHLORIDE (mgt)	43	50	88	42
CONDUCTIVITY (umhos/cm)	592	686	780	539
pH (standard units)	7.7	7.7	7.6	7.6
TOTAL DISSOLVED SOLIDS (mgll)	310	340	350	320
TEMPERATURE (OC)	25.8	25.8	26.2	25.8

"TOC: indicates the "top of the casing" of the Surficial Aquifer Monitoring Well

WATER RESOURCE SOLUTIONS, INC.

CALOOSAHATCHEE RIVER ASR
EXPLORATORY WELL EXBRY-1
PAD MONITOR WELL WATER QUALITY
(field determined)

South Florida Water Management District
Berry Grove ASR Exploratory Well

Project No. 01-04340.A 11

FDEP Permit No. 201247-001-UC

Contractor: Diversified Drilling Corporation

Prepared by: G. Susdorf

Sample Date: 7/22/03

Week#11

WELL NUMBER:	SAMW#1	SAMW#2	SAMW#3	SAMW#4
LOCATION	NE CORNER	NW CORNER	SE CORNER	SW CORNER
ELEVATION OF TOC' (NGVD)	24.67	24.32	24.51	24.69
DEPTH TO WATER (TOC')	3.81	3.62	3.47	3.78
WATER LEVEL (NGVD)	20.86	20.70	21.04	20.91
CHLORIDE (mg/l)	64	70	68	40
CONDUCTIVITY (~mhos/cm)	595	572	792	711
pH (standard units)	7.3	7.4	7.4	7.3
TOTAL DISSOLVED SOLIDS (mg/l)	320	340	350	320
TEMPERATURE (°C)	25.1	25.5	25.2	26.0

'TOC.' indicates the "top of the casing" of the Surficial Aquifer Monitoring Well

WATER RESOURCE SOLUTIONS, INC.

CALOOSAHATCHEE RIVER ASR
EXPLORATORY WELL EXBRY-1
PAD MONITOR WELL WATER QUALITY
(field determined)

South Florida Water Management District
Berry Grove ASR Exploratory Well

Project No. 01-04340.A11

FDEP Permit No. 201247 -001-UC

Contractor: Diversified Drilling Corporation

Prepared by: G. Susdorf

Sample Date: 7/30/03

Week # 12

WELL NUMBER:	SAMW#1	SAMW#2	SAMW#3	SAMW#4
LOCATION	NE CORNER	NW CORNER	SE CORNER	SW CORNER
ELEVATION OF TOC' (NGVD)	24.67	24.32	24.51	24.69
DEPTH TO WATER (TOC')	349	3.30	ND'	346
WATER LEVEL (NGVD)	21.18	21.02	NO'	21.23
CHLORIDE (mQ/l)	70	60	ND'	44
CONDUCTIVITY (umhos/cm)	834	826	ND'	693
pH (standard units)	7.3	7.3	ND'	7.3
TOTAL DISSOLVED SOLIDS (mQ/l)	370	360	NO'	340
TEMPERATURE (OC)	29.4	28.9	ND'	28.2

*TOC: indicates the "top of the casing" of the Surficial Aquifer Monitoring Well

ND: No Data

1 The well was damaged and inaccessible for sampling

WATER RESOURCE SOLUTIONS, INC.

CALOOSAHATCHEE RIVERASR
EXPLORATORY WELL EXBRY-1
PAD MONITOR WELL WATER QUALITY
(field determined)

South Florida Water Management District

Berry Grove ASR Exploratory Well

Project No. 01-04340.A11

FDEP Permit No. 201247 -OOI-UC

Contractor: Diversified Drilling Corporation

Prepared by: S. Kohlmeier/G. Susdorf

Sample Date: 8/5/03

Week # 13

WELL NUMBER	SAMW#1	SAMW#2	SAMW#3	SAMW#4
LOCATION	NE CORNER	NW CORNER	SE CORNER	SW CORNER
ELEVATION OF TOC' (NGVD)	24.67	24.32	24.51'	24.69
DEPTH TO WATER (TOC')	3.20	3.02	2.86	3.18
WATER LEVEL (NGVD)	21.47	21.30	21.65'	21.51
CHLORIDE (mg/l)	68	72	86	58
CONDUCTIVITY (µmhos/cm)	928	785	867	780
pH (standard units)	7.1	7.3	7.4	7.3
TOTAL DISSOLVED SOLIDS (mg/l)	360	320	330	360
TEMPERATURE (OC)	32.7	31.4	30.7	30.4

'TOC: indicates the "top of the casing" of the Surficial Aquifer Monitoring Well

1 The well was damaged and repaired, the elevations are approximate. The elevation of the casing needs to be resurveyed.

WATER RESOURCE SOLUTIONS, INC.

CALOOSAHATCHEE RIVER ASR
EXPLORATORY WELL EXBRY-1
PAD MONITOR WELL WATER QUALITY
(field determined)

South Florida Water Management District
Berry Grove ASR Exploratory Well

Project No. 01-04340.A11

FDEP Permit No. 201247-001-UC

Contractor: Diversified Drilling Corporation

Prepared by: S. Kohlmeier/G. Susdorf

Sample Date: 8/12/03

Week # 14

WELL NUMBER:	SAMW#1	SAMW#2	SAMW#3	SAMW#4
LOCATION	NE CORNER	NW CORNER	SE CORNER	SW CORNER
ELEVATION OF TOC* (INGVD)	24.67	24.32	24.51'	24.69
DEPTH TO WATER (TOC*)	3.37	3.16	3.06	3.34
WATER LEVEL (INGVD)	21.30	21.16	21.45'	21.35
CHLORIDE (mg/l)	72	74	100	58
CONDUCTIVITY (~mhos/cm)	743	882	814	652
pH (standard units)	7.3	7.4	7.4	7.4
TOTAL DISSOLVED SOLIDS (mg/l)	380	410	420	320
TEMPERATURE (OC)	28.6	28.6	28.6	28.7

*TOC: indicates the "top of the casing" of the Surficial Aquifer Monitoring Well.

† The well was damaged and repaired, the elevations are approximate. The elevation of the casing needs to be resurveyed.

WATER RESOURCE SOLUTIONS, INC.

CALOOSAHATCHEE RIVER ASR
EXPLORATORY WELL EXBRY-1
PAD MONITOR WELL WATER QUALITY
(field determined)

South Florida Water Management District
Berry Grove ASR Exploratory Well

Project No. 01-04340.A11

FDEP Permit No. 201247 -001-UC

Contractor: Diversified Drilling Corporation

Prepared by: S. Kohlmeier/G. Susdorf

Sample Date: 8/21/03

Week # 15

WELL NUMBER:	SAMW#1	SAMW#2	SAMW#3	SAMW#4
LOCATION	NE CORNER	NW CORNER	SE CORNER	SW CORNER
ELEVATION OF TOC' (NGVD),	24.67	24.32	24.51'	24.69
DEPTH TO WATER (TOC'),	2.82	2.55	2.48	2.75
WATER LEVEL (NGVD),	21.85	21.77	22.03'	21.94
CHLORIDE (mg/l),	54	80	92	32
CONDUCTIVITY (µmhos/cm),	720	821	800	670
pH (standard units),	7.5	7.4	7.5	7.4
TOTAL DISSOLVED SOLIDS (mg/l),	340	440	410	350
TEMPERATURE (OC)	27.2	27.2	27.0	27.3

'TOC: indicates the "top of the casing" of the Surficial Aquifer Monitoring Well

1 The well was damaged and repaired, the elevations are approximate. **The** elevation of the casing needs to be resurveyed.

WATER RESOURCE SOLUTIONS, INC.

CALOOSAHATCHEE RIVER ASR
EXPLORATORY WELL EXBRY-1
PAD MONITOR WELL WATER QUALITY
(field detennined)

South Florida Water Management District

Berry Grove ASR Exploratory Well.

Project No. 01-04340.A11

FDEP Permit No. 201247 -001-UC

Contractor: Diversified Drilling Corporation

Prepared by: G. Susdorf

Sample Date: 8/28/03

Week # 16

WELL NUMBER	SAMW#1	SAMW#2	SAMW#3	SAMW#4
LOCATION	NE CORNER	NW CORNER	SE CORNER	SW CORNER
ELEVATION OF TOC' (NGVD),	24.67	24.32	24.51'	24.69
DEPTH TO WATER (TOC')	3.35	3.20	3.15	3.25
WATER LEVEL (NGVD),	21.32	21.12	21.36'	21.45
CHLORIDE (mll),	62	54	82	32
CONDUCTIVITY (umhos/cm),	720	760	770	660
pH (standard units),	7.3	7.4	7.3	7.4
TOTAL DISSOLVED SOLIDS (mll),	380	420	430	370
TEMPERATURE (OC)	25.8	26.2	27.0	26.8

'TOC: indicates the "top of the casing" of the Surficial Aquifer Monitoring Well

! The well was damaged and repaired, the elevations are approximate.

WATER RESOURCE SOLUTIONS, INC.

CALOOSAHATCHEE RIVER ASR
EXPLORATORY WELL EXBRY-1
PAD MONITOR WELL WATER QUALITY
(field determined)

South Florida Water Management District
Berry Grove ASR Exploratory Well

Project No. 01-04340.A11

FDEP Permit No. 201247 -001-UC

Contractor: Diversified Drilling Corporation

Prepared by: G. Richardson

Sample Date: 9/3/03

Week # 17

WELL NUMBER:	SAMW#1	SAMW#2	SAMW#3	SAMW#4
LOCATION	NE CORNER	NW CORNER	SE CORNER	SW CORNER
ELEVATION OF TOC' (NGVD)	24.67	24.32	24.51'	24.69
DEPTH TO WATER (TOC')	3.80	3.60	3.43	3.83
WATER LEVEL (NGVD)	20.87	20.72	21.08'	20.86
CHLORIDE (mg/l)	32	30	40	14
CONDUCTIVITY (umhos/cm)	705	680	705	620
pH (standard units)	7.20	7.25	7.45	7.41
TOTAL DISSOLVED SOLIDS (mg/l)	400	380	400	350
TEMPERATURE (OC)	26	25	25	26

'TOC: indicates the "top of the casing" of the Surficial Aquifer Monitoring Well
The well was damaged and repaired, the elevations are approximate.

WATER RESOURCE SOLUTIONS, INC.

CALOOSAHATCHEE RIVER ASR
EXPLORATORY WELL EXBRY-1
PAD MONITOR WELL WATER QUALITY
(field determined)

South Florida Water Management District
Berry Grove ASR Exploratory Well

Project No. 01-04340.A11

FDEP Permit No. 201247 -001-UC

Contractor: Diversified Drilling Corporation

Prepared by: G. Richardson

Sample Date: 9/8/03

Week # 18

WELL NUMBER:	SAMW#1	SAMW#2	SAMW#3	SAMW#4
LOCATION	NE CORNER	NW CORNER	SE CORNER	SW CORNER
ELEVATION OF TOC' (NGVD)	24.67	24.32	24.51'	24.69
DEPTH TO WATER (TOC')	3.20	2.80	2.82	303
WATER LEVEL (NGVD)	21.47	21.52	21.69'	21.65
CHLORIDE (mg/l)	73	32	38	23
CONDUCTIVITY (umhos/cm)	720	715	760	700
pH (standard units)	7.12	7.15	7.13	7.14
TOTAL DISSOLVED SOLIDS (mg/l)	390	370	400	350
TEMPERATURE (OC)	25	25	26	26

*TOC: indicates the "top of the casing" of the Surficial Aquifer Monitoring Well

† The well was damaged and repaired. the elevations are approximate.

WATER RESOURCE SOLUTIONS, INC.

CALOOSAHATCHEE RIVER ASR
EXPLORATORY WELL EXBRY-1
PAD MONITOR WELL WATER QUALITY
(field determined)

South Florida Water Management District
Berry Grove ASR Exploratory Well

Project No. 01-04340.A11

FDEP Permit No. 201247 -001-UC

Contractor: Diversified Drilling Corporation

Prepared by: G. Richardson

Sample Date: 9/15/03

Week # 19

WELL NUMBER	SAMW#1	SAMW#2	SAMW#3	SAMW#4
LOCATION	NE CORNER	NW CORNER	SE CORNER	SW CORNER
ELEVATION OF TOC" (INGVD)	24.67	24.32	24.51'	24.69
DEPTH TO WATER (TOC")	3.33	3.09	3.00	3.24
WATER LEVEL (INGVD)	21.34	21.23	21.51'	21.45
CHLORIDE (mg/l)	55	38	50	12
CONDUCTIVITY (~mhos/cm)	710	625	650	610
pH (standard units)	7.24	7.27	7.31	7.38
TOTAL DISSOLVED SOLIDS (mg/l)	390	380	410	350
TEMPERATURE (°C)	26	25	27	25

"TOC: indicates the "top of the casing" of the Surficial Aquifer Monitoring Well
1 The well was damaged and repaired, the elevations are approximate.

WATER RESOURCE SOLUTIONS, INC.

CALOOSAHATCHEE RIVER ASR
EXPLORATORY WELL EXBRY-1
PAD MONITOR WELL WATER QUALITY
(field determined)

South Florida Water Management District
Berry Grove ASR Exploratory Well

Project No. 01-04340.A11

FDEP Permit No. 201247-001-UC

Contractor: Diversified Drilling Corporation

Prepared by: G. Susdorf

Sample Date: 9/24/03

Week#20

WELL NUMBER:	SAMW#1	SAMW#2	SAMW#3	SAMW#4
LOCATION	NE CORNER	NW CORNER	SE CORNER	SW CORNER
ELEVATION OF TOC' (NGVD),	24.67	24.32	24.51'	24.69
DEPTH TO WATER (TOC')	3.44	3.26	3.19	3.45
WATER LEVEL (NGVD),	21.23	21.06	21.32'	21.24
CHLORIDE (mg/l)	52	52	68	34
CONDUCTIVITY (µmhos/cm),	690	610	850	660
pH (standard units),	7.20	7.18	7.18	7.17
TOTAL DISSOLVED SOLIDS (mg/l)	350	380	470	340
TEMPERATURE (°C)	27.0	25.8	26.8	26.0

*TOC: indicates the "top of the casing" of the Surficial Aquifer Monitoring Well

1 The well was damaged and repaired, the elevations are approximate.

WATER RESOURCE SOLUTIONS, INC.

CALOOSAHATCHEE RIVERASR
EXPLORATORY WELL EXBRY-1
PAD MONITOR WELL WATER QUALITY
(field determined)

South Florida Water Management District

Berry Grove ASR Exploratory Well

Project No. 01-04340.A 11

FDEP Permit No. 201247 -OOI-UC

Contractor: Diversified Drilling Corporation

Prepared by: G. Susdon

Sample Date: 10/2/03

Week#21

WELL NUMBER	SAMW#1	SAMW#2	SAMW#3	SAMW#4
LOCATION	NE CORNER	NW CORNER	SE CORNER	SW CORNER
ELEVATION OF TOC' (NGVD),	24.67	24.32	24.51'	24.69
DEPTH TO WATER (TOC')	2.86	2.85	2.64	303
WATER LEVEL (NGVD),	21.81	21.47	21.87'	21.66
CHLORIDE (mM),	50	58	60	38
CONDUCTIVITY (µmhos/cm),	690	710	760	640
pH (standard units),	7.24	7.20	7.18	7.24
TOTAL DISSOLVED SOLIDS (mM),	340	400	400	340
TEMPERATURE (OC)	26.8	26.0	25.8	26.0

'TOC : indicates the "top of the casing" of the Surficial Aquifer Monitoring Well
 1 The welll was damaged and repaired, the elevations are approximate.

WATER RESOURCE SOLUTIONS, INC.

CALOOSAHATCHEE RIVER ASR
EXPLORATORY WELL EXBRY-1
PAD MONITOR WELL WATER QUALITY
(field determined)

South Florida Water Management District
Berry Grove ASR Exploratory Well

Project No. 01-04340.A 11

FDEP Permit No. 201247 -001-UC Contractor: Diversified Drilling Corporation

Prepared by: G. Susdorf/S. Kohlmeier Sample Date: 10m03 Week # 22

WELL NUMBER:	SAMW#1	SAMW#2	SAMW#3	SAMW#4
LOCATION	NE CORNER	NW CORNER	SE CORNER	SW CORNER
ELEVATION OF TOC* (NGVD)	24.67	24.32	24.51'	24.69
DEPTH TO WATER (TOC*)	2.79	2.91	2.61	3.10
WATER LEVEL (NGVD)	21.88	21.41	21.90'	21.59
CHLORIDE (mg/l)	66	66	74	40
CONDUCTIVITY (µmhos/cm)	886	771	789	710
pH (standard units)	7.4	7.4	7.4	7.4
TOTAL DISSOLVED SOLIDS (mg/l)	370	390	410	360
TEMPERATURE (°C)	27.2	26.9	26.9	26.7

*TOC : indicates the "top of the casing" of the Surficial Aquifer Monitoring Well

† The well was damaged and repaired, the elevations are approximate.

WATER RESOURCE SOLUTIONS, INC.

CALOOSAHATCHEE RIVER ASR
EXPLORATORY WELL EXBRY-1
PAD MONITOR WELL WATER QUALITY
(field determined)

South Florida Water Management District
Berry Grove ASR Exploratory Well

Project No. 01-04340.A11

FDEP Permit No. 201247 -001-UC Contractor: Diversified Drilling Corporation

Prepared by: G. Susdorf

Sample Date: 10/14/03

Week~>

WELL NUMBER	SAMW#1	SAMW#2	SAMW#3	SAMW#4
LOCATION	NE CORNER	NW CORNER	SE CORNER	SW CORNER
ELEVATION OF TOC' (NGVD)	24.67	24.32	24.51'	24.69
DEPTH TO WATER (TOC')	2.68	2.75	2.53	2.94
WATER LEVEL (NGVD)	21.99	21.57	21.98'	21.75
CHLORIDE (mg/l)	68	68	60	60
CONDUCTIVITY (umhos/cm)	361	576	556	548
pH (standard units)	7.6	7.6	7.6	7.6
TOTAL DISSOLVED SOLIDS (moll)	340	410	380	380
TEMPERATURE (OC)	25.8	26.0	26.0	25.8

*TOC: indicates the "top of the casing" of the Surficial Aquifer Monitoring Well

† The well was damaged and repaired, the elevations are approximate.

WATER RESOURCE SOLUTIONS, INC.

CALOOSAHATCHEE RIVERASR
EXPLORATORY WELL EXBRY-1
PAD MONITOR WELL WATER QUALITY
(field determined)

South Florida Water Management District
Berry Grove ASR Exploratory Well

Project No. 01-04340.A11

FDEP Permit No. 201247 -OOI-UC

Contractor: Diversified Drilling Corporation

Prepared by: G. Susdorf/S. Kohlmeier

Sample Date: 10/21/03

Week#24

WELL NUMBER	SAMW#1	SAMW#2	SAMW#3	SAMW#4
LOCATION	NE CORNER	NW CORNER	SE CORNER	SW CORNER
ELEVATION OF TOC' (NGVD)	24.67	24.32	24.51'	24.69
DEPTH TO WATER (TOC')	2.76	2.97	2.63	3.10
WATER LEVEL (NGVD)	21.91	21.35	21.88'	21.59
CHLORIDE (mM)	58	64	64	58
CONDUCTIVITY (µmhos/cm)	690	678	666	650
pH (standard units)	7.1	7.0	7.0	7.0
TOTAL DISSOLVED SOLIDS (mM)	350	340	332	325
TEMPERATURE (OC)	25.8	26.5	26.2	26.2

"TOC: indicates the "top of the casing" of the Surficial Aquifer Monitoring Well
, The well was damaged and repaired, the elevations are approximate.

WATER RESOURCE SOLUTIONS, INC.

CALOOSAHATCHEE RIVER ASR
EXPLORATORY WELL EXBRY-1
PAD MONITOR WELL WATER QUALITY
(field determined)

South Florida Water Management District
Berry Grove ASR Exploratory Well

Project No. 01-04340.A 11

FDEP Permit No. 201247 -001-UC

Contractor: Diversified Drilling Corporation

Prepared by: G. Susdorf

Sample Date: 10/29/03

Week#25

WELL NUMBER	SAMW#1	SAMW#2	SAMW#3	SAMW#4
LOCATION	NE CORNER	NW CORNER	SE CORNER	SW CORNER
ELEVATION OF TOC' {NGVD\}	24.67	24.32	24.51'	24.69
DEPTH TO WATER (TOC')	3.05	2.93	2.79	3.07
WATER LEVEL {NGVD\}	21.62	21.39	21.72'	21.62
CHLORIDE {mgm}	58	62	72	46
CONDUCTIVITY (µmhos/cm)	584	657	672	628
pH (standard units)	7.3	7.2	7.3	7.2
TOTAL DISSOLVED SOLIDS (mg/l)	360	400	410	380
TEMPERATURE (°C)	25.8	26.0	26.0	26.0

*TOC: indicates the "top of the casing" of the Surficial Aquifer Monitoring Well.
The well was damaged and repaired, the elevations are approximate.

WATER RESOURCE SOLUTIONS, INC.

CALOOSAHATCHEE RIVER ASR
EXPLORATORY WELL EXBRY-1
PAD MONITOR WELL WATER QUALITY
(field determined)

South Florida Water Management District

Berry Grove ASR Exploratory Well

Project No. 01-04340.A 11

FDEP Permit No. 201247 -001-UC

Contractor: Diversified Drilling Corporation

Prepared by: G. Richardson

Sample Date: 11/5/03

Week#26

WELL NUMBER	SAMW#1	SAMW#2	SAMW#3	SAMW#4
LOCATION	NE CORNER	NW CORNER	SE CORNER	SW CORNER
ELEVATION OF TOC' (NGVD)	24,67	24,32	24,51'	24,69
DEPTH TO WATER (TOC')	3,92	3,80	3,67	3,98
WATER LEVEL (NGVD)	20,75	20,52	20,84'	20,71
CHLORIDE (mg/l)	25	55	75	24
CONDUCTIVITY (umhos/cm)	592	676	729	636
pH (standard units)	7,52	7,43	7,40	7,25
TOTAL DISSOLVED SOLIDS (mg/l)	340	380	400	370
TEMPERATURE (OC)	27	27	26	26

*TOC: indicates the "top of the casing" of the Surficial Aquifer Monitoring Well.

† The well was damaged and repaired, the elevations are approximate,

WATER RESOURCE SOLUTIONS, INC.

CALOOSAHATCHEE RIVER ASR
EXPLORATORY WELL EXBRY-1
PAD MONITOR WELL WATER QUALITY
(field determined)

South Florida Water Management District
Berry Grove ASR Exploratory Well

Project No. 01-04340.A 11

FDEP Permit No. 201247 -001-UC

Contractor: Diversified Drilling Corporation

Prepared by: G. Susdorf

Sample Date: 11/11/03

Week # 27

WELL NUMBER:	SAMW#1	SAMW#2	SAMW#3	SAMW#4
LOCATION	NE CORNER	NW CORNER	SE CORNER	SW CORNER
ELEVATION OF TOC' (NGVD)	24.67	24.32	24.51'	24.69
DEPTH TO WATER (TOC')	3.80	3.58	3.50	3.79
WATER LEVEL (NGVD)	20.87	20.74	21.01'	20.90
CHLORIDE (mQ/l)	38	68	68	42
CONDUCTIVITY (umhos/cm)	510	677	686	654
pH (standard units)	7.3	7.9	7.4	7.2
TOTAL DISSOLVED SOLIDS (mQ/l)	310	380	390	380
TEMPERATURE (°C)	25.9	25.7	25.7	25.8

'TOC: indicates the "top of the casing" of the Surficial Aquifer Monitoring Well

† The well was damaged and repaired, the elevations are approximate.

WATER RESOURCE SOLUTIONS, INC.

CALOOSAHATCHEE RIVERASR
EXPLORATORY WELL EXBRY-1
PAD MONITOR WELL WATER QUALITY
(field determined)

South Florida Water Management District
Berry Grove ASR Exploratory Well

Project No. 01-04340.A11

FDEP Permit No. 201247 -OOI-UC Contractor: Diversified Drilling Corporation

Prepared by: G. Susdorf

Sample Date: 11/18/03

Week#28

WELL NUMBER	SAMW#1	SAMW#2	SAMW#3	SAMW#4
LOCATION	NE CORNER	NW CORNER	SE CORNER	SW CORNER
ELEVATION OF TOC" (NGVD)	24.67	24.32	24.51'	24.69
DEPTH TO WATER (TOC")	3.71	3.56	3.41	3.71
WATER LEVEL (NGVD)	20.96	20.76	21.10'	20.98
CHLORIDE (ma/l)	44	66	66	48
CONDUCTIVITY (umhos/cm)	580	681	680	665
pH (standard units)	7.2	7.6	7.3	7.3
TOTAL DISSOLVED SOLIDS (mall)	320	400	390	380
TEMPERATURE (OC)	25.8	25.7	25.6	25.8

"TOC : indicates the "top of the casing" of the Surficial Aquifer Monitoring Well
 1 The well was damaged and repaired, the elevations are approximate.

WATER RESOURCE SOLUTIONS, INC.

CALOOSAHATCHEE RIVER ASR
EXPLORATORY WELL EXBRY-1
PAD MONITOR WELL WATER QUALITY
(field determined)

South Florida Water Management District
Berry Grove ASR Exploratory Well

Project No. 01-04340.A 11

FDEP Permit No. 201247-001-UC

Contractor: Diversified Drilling Corporation

Prepared by: G. Susdorf

Sample Date: 11/25/03

Week # 29

WELL NUMBER:	SAMW#1	SAMW#2	SAMW#3	SAMW#4
LOCATION	NE CORNER	NW CORNER	SE CORNER	SW CORNER
ELEVATION OF TOC' (NGVD)	24.67	24.32	24.51'	24.69
DEPTH TO WATER (TOC')	3.79	3.59	3.48	3.80
WATER LEVEL (NGVD)	20.88	20.73	21.03'	20.89
CHLORIDE (mg/l)	42	58	70	40
CONDUCTIVITY (µmhos/cm)	557	591	697	617
pH (standard units)	7.3	10.0	7.4	7.4
TOTAL DISSOLVED SOLIDS (mg/l)	360	370	390	370
TEMPERATURE (OC)	25.3	25.4	26.5	25.8

'TOC: indicates the "top of the casing" of the Surficial Aquifer Monitoring Well
 1 The well was damaged and repaired, the elevations are approximate.

WATER RESOURCE SOLUTIONS, INC.

CALOOSAHATCHEE RIVERASR
EXPLORATORY WELL EXBRY-1
PAD MONITOR WELL WATER QUALITY
(field determined)

South Florida Water Management District

Berry Grove ASR Exploratory Well

Project No. 01-04340.A11

FDEP Permit No. 201247 -001-UC

Contractor: Diversified Drilling Corporation

Prepared by: G. Susdorf

Sample Date: 12/2/03

Week#30

WELL NUMBER:	SAMW#1	SAMW#2	SAMW#3	SAMW#4
LOCATION	NE CORNER	NW CORNER	SE CORNER	SW CORNER
ELEVATION OF TOC" (NGVD)	24.67	24.32	24.51'	24.69
DEPTH TO WATER (TOC")	3.81	3.62	3.51	3.84
WATER LEVEL (NGVD)	20.86	20.70	21.00'	20.85
CHLORIDE (mM)	42	58	68	44
CONDUCTIVITY (umhos/cm)	570	600	680	610
DH (standard units)	73	9.8	7.3	74
TOTAL DISSOLVED SOLIDS (mM)	370	380	400	380
TEMPERATURE (OC)	25.2	25.3	25.3	25.3

"TOC: indicates the "top of the casing" of the Surficial Aquifer Monitoring Well
 † The well was damaged and repaired, the elevations are approximate.

WATER RESOURCE SOLUTIONS, INC.

CALOOSAHATCHEE RIVER ASR
EXPLORATORY WELL EXBRY-1
PAD MONITOR WELL WATER QUALITY
(field determined)

South Florida Water Management District
Berry Grove ASR Exploratory Well

Project No. 01-04340.A11

FDEP Permit No. 201247 -001-UC Contractor: Diversified Drilling Corporation

Prepared by: G. SusdorflS Kohlmeier Sample Date: 12/11/03 Week # 31

WELL NUMBER:	SAMW#1	SAMW#2	SAMW#3	SAMW#4
LOCATION	NE CORNER	NW CORNER	SE CORNER	SW CORNER
ELEVATION OF TOC' (NGVD)	24.67	24.32	24.51'	24.69
DEPTH TO WATER (TOC')	3.33	3.33	3.35	3.05
WATER LEVEL (NGVD)	21.34	20.99	21.16'	21.64
CHLORIDE (moll)	62	74	72	50
CONDUCTIVITY (wmhos/cm)	617	625	652	645
pH (standard units)	7.1	9.5	7.0	7.0
TOTAL DISSOLVED SOLIDS (moll)	370	370	390	400
TEMPERATURE (OC)	20.2	23.0	21.4	22.0

"TOC: indicates the "top of the casing" of the Surficial Aquifer Monitoring Well
 † The well was damaged and repaired, the elevations are approximate.

WATER RESOURCE SOLUTIONS, INC.

CALOOSAHATCHEE RIVER ASR
EXPLORATORY WELL EXBRY-1
PAD MONITOR WELL WATER QUALITY
(field determined)

South Florida Water Management District
Berry Grove ASR Exploratory Well

Project No. 01-04340.A 11

FDEP Permit No. 201247 -001-UC Contractor: Diversified Drilling Corporation

Prepared by: G. Susdorf/S Kohlmeier Sample Date: 12/17/03 Week#32

WELL NUMBER:	SAMW#1	SAMW#2	SAMW#3	SAMW#4
LOCATION	NE CORNER	NW CORNER	SE CORNER	SW CORNER
ELEVATION OF TOC* (NGVD)	24.67	24.32	24.51'	24.69
DEPTH TO WATER (TOC*)	3.25	3.20	2.93	3.22
WATER LEVEL (NGVD)	21.42	21.12	21.58'	21.47
CHLORIDE (mg/l)	54	140	120	48
CONDUCTIVITY (~mhos/cm)	672	1276	985	632
pH (standard units)	7.6	12.1	7.2	7.1
TOTAL DISSOLVED SOLIDS (mg/l)	1037'	1169'	1054'	1040'
TEMPERATURE (OC)	22.7	22.2	22.0	22.3

*TOC: indicates the "top of the casing" of the Surficial Aquifer Monitoring Well

1 The well was damaged and repaired, the elevations are approximate.

, The TDS readings were taken with the meter regularly used. However, the values are not consistent with the measured chloride and conductivity or with the historical results.

WATER RESOURCE SOLUTIONS, INC.

CALOOSAHATCHEE RIVER ASR
EXPLORATORY WELL EXBRY-1
PAD MONITOR WELL WATER QUALITY
(field determined)

South Florida Water Management District
Berry Grove ASR Exploratory Well

Project No. 01-04340.A11

FDEP Permit No. 201247 -001-UC Contractor: Diversified Drilling Corporation

Prepared by: G. Susdorf

Sample Date: 12/24/03

Week#33

WELL NUMBER:	SAMW#1	SAMW#2	SAMW#3	SAMW#4
LOCATION	NE CORNER	NW CORNER	SE CORNER	SW CORNER
ELEVATION OF TOC (NGVD)	24.67	24.32	24.51'	24.69
DEPTH TO WATER (TOC)	3.97	NR'	3.58	3.94
WATER LEVEL (NGVD)	20.70	NR'	20.93'	20.75
CHLORIDE (mQll)	46	50	130	52
CONDUCTIVITY (umhos/cm)	546	633	822	644
pH (standard units)	7.48	7.72	7.48	7.56
TOTAL DISSOLVED SOLIDS (moll)	360	400	540	400
TEMPERATURE (OC)	24.8	25.2	23.5	24.5

*TOC: indicates the "top of the casing" of the Surficial Aquifer Monitoring Well
 † The well was damaged and repaired, the elevations are approximate.
 , NR: Not recorded - the well was being air-developed at the time of sampling.

WATER RESOURCE SOLUTIONS, INC.

CALOOSAHATCHEE RIVERASR
EXPLORATORY WELL EXBRY-1
PAD MONITOR WELL WATER QUALITY
(field determined)

South Florida Water Management District
Berry Grove ASR Exploratory Well

Project No. 01-04340.A11

FDEP Permit No. 201247 -OOI-UC **Contractor: Diversified Drilling Corporation**

Prepared by: G. Susdorf/S. Kohlmeier Sample Date: 12/31/03 Week#34

WELL NUMBER	SAMW#1	SAMW#2	SAMW#3	SAMW#4
LOCATION	NE CORNER	NW CORNER	SE CORNER	SW CORNER
ELEVATION OF TOC' INGVDI	24.67	24.32	24.51'	24.69
DEPTH TO WATER (TOC')	3.92	3.77	3.62	3.90
WATERLEVELINGVDI	20.75	20.55	20.89'	20.79
CHLORIDE (mg/l)	80	86	170	64
CONDUCTIVITY (umhos/cm)	639	562	858	708
pH (standard units)	7.1	9.3	7.1	7.1
TOTAL DISSOLVED SOLIDS (mg/l)	350	340	520	390
TEMPERATURE (OC)	24.4	23.7	24.1	24.0

'TOC: indicates the "top of the casing" of the Surficial Aquifer Monitoring Well
The well was damaged and repaired, the elevations are approximate.

WATER RESOURCE SOLUTIONS, INC.

CALOOSAHATCHEE RIVER ASR
EXPLORATORY WELL EXBRY-1
PAD MONITOR WELL WATER QUALITY
(field determined)

South Florida Water Management District
Berry Grove ASR Exploratory Well

Project No. 01-04340.A11

FDEP Permit No. 201247 -OOI-UC

Contractor: Diversified Drilling Corporation

Prepared by: G. Susdorf

Sample Date: 1/7/04

Week # 35

WELL NUMBER:	SAMW#1	SAMW#2	SAMW#3	SAMW#4
LOCATION	NE CORNER	NW CORNER	SE CORNER	SW CORNER
ELEVATION OF TOC' (NGVD)	24.67	24.32	24.51'	24.69
DEPTH TO WATER (TOC')	3.62	3.53	3.32	3.62
WATER LEVEL (NGVD)	21.05	20.79	21.29'	21.07
CHLORIDE (mg/l)	46	88	130	58
CONDUCTIVITY (umhos/cm)	587	674	845	668
pH (standard units)	7.37	7.75	7.28	7.20
TOTAL DISSOLVED SOLIDS (mg/l)	370	440	580	420
TEMPERATURE (OC)	23.5	23.5	23.0	23.8

'TOC: indicates the "top of the casing" of the Surficial Aquifer Monitoring Well
 1 The well was damaged and repaired, the elevations are approximate.

WATER RESOURCE SOLUTIONS, INC.

CALOOSAHATCHEE RIVER ASR
EXPLORATORY WELL EXBRY-1
PAD MONITOR WELL WATER QUALITY
(field determined)

South Florida Water Management District
Berry Grove ASR Exploratory Well

Project No. 01-04340.A11

FDEP Permit No. 201247-001-UC

Contractor: Diversified Drilling Corporation

Prepared by: G. Susdorf/T. Nelson

Sample Date: 1/13/04

Week # 36

WELL NUMBER:	SAMW#1	SAMW#2	SAMW#3	SAMW#4
LOCATION	NE CORNER	NW CORNER	SE CORNER	SW CORNER
ELEVATION OF TOC' (NGVD)	24.67	24.32	24.51'	24.69
DEPTH TO WATER (TOC')	3.45	3.41	3.22	3.57
WATER LEVEL (NGVD)	21.22	20.91	21.29'	21.12
CHLORIDE (mg/l)	56	92	134	63
CONDUCTIVITY (~mhos/cm)	601	741	852	701
pH (standard units)	7.30	7.39	7.28	7.18
TOTAL DISSOLVED SOLIDS (mg/l)	380	460	570	440
TEMPERATURE (°C)	23.0	23.5	23.0	22.5

*TOC: indicates the "top of the casing" of the Surficial Aquifer Monitoring Well
 † The well was damaged and repaired, the elevations are approximate.

WATER RESOURCE SOLUTIONS, INC.

CALOOSAHATCHEE RIVERASR
EXPLORATORY WELL EXBRY-1
PAD MONITOR WELL WATER QUALITY
(field determined)

South Florida Water Management District

Berry Grove ASR Exploratory Well.

Project No. 01-04340.A11

FDEP Permit No. 201247 -OOI-UC

Contractor: Diversified Drilling Corporation

Prepared by: G. Susdorf/T. Nelson

Sample Date: 1/20/04

Week # 37

WELL NUMBER:	SAMW#1	SAMW#2	SAMW#3	SAMW#4
LOCATION	NE CORNER	NW CORNER	SE CORNER	SW CORNER
ELEVATION OF TOC' (INGVDI)	24.67	24.32	24.51'	24.69
DEPTH TO WATER (TOC')	3.00	3.22	2.91	3.35
WATER LEVEL (INGVDI)	21.67	21.10	21.60'	21.34
CHLORIDE (mg/l)	58	105	136	84
CONDUCTIVITY (umhos/cm)	645	831	900	814
pH (standard units)	7.30	7.39	7.28	7.18
TOTAL DISSOLVED SOLIDS (mg/l)	410	530	600	510
TEMPERATURE (OC)	23.0	22.0	22.0	21.0

"TOC: indicates the "top of the casing" of the Surficial Aquifer Monitoring Well
The well was damaged and repaired, the elevations are approximate.

WATER RESOURCE SOLUTIONS, INC.

CALOOSAHATCHEE RIVER ASR
EXPLORATORY WELL EXBRY-1
PAD MONITOR WELL WATER QUALITY
(field determined)

South Florida Water Management District

Berry Grove ASR Exploratory Well

Project No. 01-04340.A11

FDEP Permit No. 201247-001-UC

Contractor: Diversified Drilling Corporation

Prepared by: G. Susdorf/T. Nelson

Sample Date: 1/27/04

Week#38

WELL NUMBER:	SAMW#1	SAMW#2	SAMW#3	SAMW#4
LOCATION	NE CORNER	NW CORNER	SE CORNER	SW CORNER
ELEVATION OF TOC' (NGVD)	24.67	24.32	24.51'	24.69
DEPTH TO WATER (TOC')	3.56	3.53	3.41	3.58
WATER LEVEL (NGVD)	21.11	20.79	21.10'	21.11
CHLORIDE (moll)	60	120	140	150
CONDUCTIVITY (umhos/em)	611	920	901	951
pH (standard units)	7.33	7.41	7.34	7.23
TOTAL DISSOLVED SOLIDS (moll)	380	560	560	620
TEMPERATURE (OC)	23.0	23.0	22.0	22.0

*TOC: indicates the "top of the casing" of the Surficial Aquifer Monitoring Well
, The well was damaged and repaired, the elevations are approximate.

WATER RESOURCE SOLUTIONS, INC.

CALOOSAHATCHEE RIVER ASR
EXPLORATORY WELL EXBRY-1
PAD MONITOR WELL WATER QUALITY
(field determined)

South Florida Water Management District
Berry Grove ASR Exploratory Well

Project No. 01-04340.A11

FDEP Permit No. 201247 -001-UC

Contractor: Diversified Drilling Corporation

Prepared by: G. Susdorf/A. McThenia

Sample Date: 2/3/04

Week # 39

WELL NUMBER:	SAMW#1	SAMW#2	SAMW#3	SAMW#4
LOCATION	NE CORNER	NW CORNER	SE CORNER	SW CORNER
ELEVATION OF TOC' (NGVD)	24.67	24.32	24.51'	24.69
DEPTH TO WATER (TOC')	3.85	3.53	346	3.69
WATER LEVEL (NGVD)	20.82	20.79	21.05'	21.00
CHLORIDE (mll)	58	200	142	156
CONDUCTIVITY (μ mhos/cm)	613	1138	926	1087
pH (standard Units)	7.28	7.56	7.31	7.26
TOTAL DISSOLVED SOLIDS (mll)	380	700	580	670
TEMPERATURE (OC)	20.0	22.0	20.0	20.0

'TOC: indicates the "top of the casing" of the Surficial Aquifer Monitoring Well
, The well was damaged and repaired, the elevations are approximate.

WATER RESOURCE SOLUTIONS, INC.

CALOOSAHATCHEE RIVERASR
EXPLORATORY WELL EXBRY-1
PAD MONITOR WELL WATER QUALITY
(field determined)

South Florida Water Management District
Berry Grove ASR Exploratory Well

Project No. 01-04340.A 11

FDEP Permit No. 201247 -OOI-UC

Contractor: Diversified Drilling Corporation

Prepared by: G. Susdorf/T. Nelson

Sample Date: 2/10/04

Week#40

WELL NUMBER	SAMW#1	SAMW#2	SAMW#3	SAMW#4
LOCATION	NE CORNER	NW CORNER	SE CORNER	SW CORNER
ELEVATION OF TOC' (NGVD)	24.67	24.32	24.51'	24.69
DEPTH TO WATER (TOC')	3.49	3.51	3.42	3.34
WATER LEVEL (NGVD)	21.18	20.81	21.09'	21.35
CHLORIDE (moll)	65	200	125	143
CONDUCTIVITY (umhos/cm)	626	1150	945	935
pH (standard units)	7.34	7.53	7.31	7.27
TOTAL DISSOLVED SOLIDS (moll)	390	750	590	620
TEMPERATURE (OC)	23.0	23.0	22.0	23.0

*TOC: indicates the "top of the casing" of the Surficial Aquifer Monitoring Well
 † The well was damaged and repaired, the elevations are approximate.

WATER RESOURCE SOLUTIONS, INC.

CALOOSAHATCHEE RIVER ASR
EXPLORATORY WELL EXBRY-1
PAD MONITOR WELL WATER QUALITY
(field determined)

South Florida Water Management District
Berry Grove ASR Exploratory Well

Project No. 01-04340.A 11

FDEP Permit No. 201247 -001-UC Contractor: Diversified Drilling Corporation

Prepared by: G. Susdorf

Sample Date: 2/17/04

Week #41

WELL NUMBER:	SAMW#1	SAMW#2	SAMW#3	SAMW#4
LOCATION	NE CORNER	NW CORNER	SE CORNER	SW CORNER
ELEVATION OF TOC" (NGVD)	24.67	24.32	24.51'	24.69
DEPTH TO WATER (TOC")	3.43	3.24	3.15	3.41
WATER LEVEL (NGVD)	21.24	21.08	21.36'	21.28
CHLORIDE (mg/l)	80	216	158	92
CONDUCTIVITY (~mhos/cm)	658	1119	1020	778
pH (standard units)	7.40	7.47	7.37	7.43
TOTAL DISSOLVED SOLIDS (mg/l)	410	720	630	510
TEMPERATURE (OC)	22.8	22.5	22.0	21.8

"TOC: indicates the "top of the casing" of the Surficial Aquifer Monitoring Well

1 The well was damaged and repaired, the elevations are approximate.

WATER RESOURCE SOLUTIONS, INC.

CALOOSAHATCHEE RIVER ASR
EXPLORATORY WELL EXBRY-1
PAD MONITOR WELL WATER QUALITY
(field determined)

South Florida Water Management District
Berry Grove ASR Exploratory Well

Project No. 01-04340.A11

FDEP Permit No. 201247-001-UC

Contractor: Diversified Drilling Corporation

Prepared by: G. Susdorf/A. McThenia

Sample Date: 2/24/04

Week#42

WELL NUMBER:	SAMW#1	SAMW#2	SAMW#3	SAMW#4
LOCATION	NE CORNER	NW CORNER	SE CORNER	SW CORNER
ELEVATION OF TOC' (NGVD)	24.67	24.32	24.51'	24.69
DEPTH TO WATER (TOC')	3.32	3.11	2.96	3.31
WATER LEVEL (NGVD)	21.35	21.21	21.55'	21.38
CHLORIDE (mg/l)	50	194	168	64
CONDUCTIVITY (umhos/cm)	610	1128	1097	685
pH (standard units)	7.30	7.29	7.29	7.27
TOTAL DISSOLVED SOLIDS (mg/l)	380	690	670	490
TEMPERATURE (OC)	23.5	23.5	23.0	22.8

'TOC : indicates the "top of the casing" of the Surficial Aquifer Monitoring Well

1 The well was damaged and repaired, the elevations are approximate.

WATER RESOURCE SOLUTIONS, INC.

CALOOSAHATCHEE RIVERASR
EXPLORATORY WELL EXBRY-1
PAD MONITOR WELL WATER QUALITY
(field determined)

South Florida Water Management District
Berry Grove ASR Exploratory Well.

Project No. 01-04340.A11

FDEP Permit No. 201247-001-UC

Contractor: Diversified Drilling Corporation

Prepared by: A. McThenia

Sample Date: 3/2/04

Week#43

WELL NUMBER:	SAMW#1	SAMW#2	SAMW#3	SAMW#4
LOCATION	NE CORNER	NW CORNER	SE CORNER	SW CORNER
ELEVATION OF TOC' (NGVD)	24.67	24.32	24.51'	24.69
DEPTH TO WATER (TOC')	3.55	3.41	3.30	3.57
WATER LEVEL (NGVD)	2112	20.91	21.21'	21.12
CHLORIDE (mQII)	66	310	176	142
CONDUCTIVITY (wmhos/cm)	663	1584	1045	1064
pH (standard units)	7.47	7.73	7.47	7.44
TOTAL DISSOLVED SOLIDS (mQII)	410	940	600	620
TEMPERATURE (°C)	22.4	22.3	22.0	22.3

*TOC: indicates the "top of the casing" of the Surficial Aquifer Monitoring Well
, The well was damaged and repaired, the elevations are approximate.

WATER RESOURCE SOLUTIONS, INC.

CALOOSAHATCHEE RIVER ASR
EXPLORATORY WELL EXBRY-1
PAD MONITOR WELL WATER QUALITY
(field determined)

South Florida Water Management District
Berry Grove ASR Exploratory Well

Project No. 01-04340.A 11

FDEP Permit No. 201247 -001-UC Contractor: Diversified Drilling Corporation

Prepared by: A. McThenia

Sample Date: 3/9/04

Week #44

WELL NUMBER	SAMW#1	SAMW#2	SAMW#3	SAMW#4
LOCATION	NE CORNER	NW CORNER	SE CORNER	SW CORNER
ELEVATION OF TOC' (NGVD)	24.67	24.32	24.51'	24.69
DEPTH TO WATER (TOC')	3.53	3.41	3.20	3.51
WATER LEVEL (NGVD)	21.14	20.91	21.31'	21.18
CHLORIDE (mg/l)	54	222	136	106
CONDUCTIVITY (µmhos/cm)	633	1289	957	904
pH (standard units)	7.32	7.60	7.37	7.37
TOTAL DISSOLVED SOLIDS (mg/l)	370	770	550	540
TEMPERATURE (OC)	21.0	22.0	21.8	21.0

"TOC: indicates the "top of the casing" of the Surficial Aquifer Monitoring Well

† The well was damaged and repaired, the elevations are approximate.

WATER RESOURCE SOLUTIONS, INC.

CALOOSAHATCHEE RIVERASR
EXPLORATORY WELL EXBRY-1
PAD MONITOR WELL WATER QUALITY
(field determined)

South Florida Water Management District
Berry Grove ASR Exploratory Well.

Project No. 01-04340.A11

FDEP Permit No. 201247 -OOI-UC

Contractor: Diversified Drilling Corporation

Prepared by: A. McThenia

Sample Date: 3/17/04

Week#45

WELL NUMBER	SAMW#1	SAMW#2	SAMW#3	SAMW#4
LOCATION	NE CORNER	NW CORNER	SE CORNER	SW CORNER
ELEVATION OF TOC' (NGVD)	24.67	24.32	24.51'	24.69
DEPTH TO WATER (TOC')	3.57	3.45	3.20	3.51
WATER LEVEL (NGVD)	21.10	20.87	21.31'	21.18
CHLORIDE (mg/l)	44	262	144	120
CONDUCTIVITY (umhos/cm)	626	1363	969	972
pH (standard units)	7.42	7.62	7.50	7.48
TOTAL DISSOLVED SOLIDS (mg/l)	370	780	560	560
TEMPERATURE (°C)	22.2	22.7	22.5	23.0

'TOC : indicates the "top of the casing" of the Surficial Aquifer Monitoring Well.
; The well was damaged and repaired, the elevations are approximate.

WATER RESOURCE SOLUTIONS, INC.

CALOOSAHATCHEE RIVER ASR
EXPLORATORY WELL EXBRY-1
PAD MONITOR WELL WATER QUALITY
(field determined)

South Florida Water Management District

Berry Grove ASR Exploratory Well

Project No. 01-04340.A 11

FDEP Permit No. 201247 -001-UC

Contractor: Diversified Drilling Corporation

Prepared by: A. McThenia

Sample Date: 3/23/04

Week#46

WELL NUMBER:	SAMW#1	SAMW#2	SAMW#3	SAMW#4
LOCATION	NE CORNER	NW CORNER	SE CORNER	SW CORNER
ELEVATION OF TOC' (NGVD)	24.67	24.32	24.51'	24.69
DEPTH TO WATER (TOC')	3.50	3.41	3.19	3.51
WATER LEVEL (NGVD)	21.17	20.91	21.32'	21.18
CHLORIDE (mg/l)	66	285	150	96
CONDUCTIVITY (umhos/cm)	530	1434	988	864
pH (standard units)	7.37	7.47	7.43	7.54
TOTAL DISSOLVED SOLIDS (mll)	380	870	610	530
TEMPERATURE (OCI	21.5	21.9	21.2	21.0

'TOC' indicates the "top of the casing" of the Surficial Aquifer Monitoring Well

1 The well was damaged and repaired, the elevations are approximate.

WATER RESOURCE SOLUTIONS, INC.

CALOOSAHATCHEE RIVER ASR
EXPLORATORY WELL EXBRY-1
PAD MONITOR WELL WATER QUALITY
(field determined)

South Florida Water Management District
Berry Grove ASR Exploratory Well

Project No. 01-04340.A 11

FDEP Permit No. 201247 -001-UC

Contractor: Diversified Drilling Corporation

Prepared by: A. McThenia

Sample Date: 3/30/04

Week #47

WELL NUMBER:	SAMW#1	SAMW#2	SAMW#3	SAMW#4
LOCATION	NE CORNER	NW CORNER	SE CORNER	SW CORNER
ELEVATION OF TOC' (NGVD)	24.67	24.32'	24.51'	24.69
DEPTH TO WATER (TOC')	348	3.38	3.14	348
WATER LEVEL (NGVD)	21.19	20.94	21.37'	21.21
CHLORIDE (mg/l)	58	132	136	134
CONDUCTIVITY (umhos/cm)	606	1146	912	990
pH (standard units)	7.39	7.50	7.37	743
TOTAL DISSOLVED SOLIDS (mg/l)	340	530	550	600
TEMPERATURE (OC)	23.6	23.9	23.0	23.0

'TOC: indicates the "top of the casing" of the Surficial Aquifer Monitoring Well
, The well was damaged and repaired, the elevations are approximate.

WATER RESOURCE SOLUTIONS, INC.

CALOOSAHATCHEE RIVER ASR
EXPLORATORY WELL EXBRY-1
PAD MONITOR WELL WATER QUALITY
(field determined)

South Florida Water Management District
Berry Grove ASR Exploratory Well

Project No. 01-04340.A11

FDEP Permit No. 201247-001-UC

Contractor: Diversified Drilling Corporation

Prepared by: A. McThenia

Sample Date: 4/7/04

Week #48

WELL NUMBER	SAMW#1	SAMW#2	SAMW#3	SAMW#4
LOCATION	NE CORNER	NW CORNER	SE CORNER	SW CORNER
ELEVATION OF TOC' (NGVD)	24.67	24.32'	24.51'	24.69
DEPTH TO WATER (TOC')	3.41	3.52	3.19	3.53
WATER LEVEL (NGVD)	21.26	20.80'	21.32'	21.16
CHLORIDE (mQ/l)	44	212	98	90
CONDUCTIVITY (umhos/cm)	528	1044	707	754
pH (standard units)	6.70	6.82	6.70	6.64
TOTAL DISSOLVED SOLIDS (mQ/l)	320	630	410	460
TEMPERATURE (OC)	23.5	23.0	23.3	23.7

*TOC: indicates the "top of the casing" of the Surficial Aquifer Monitoring Well.

† The well was damaged and repaired, the elevations are approximate.

WATER RESOURCE SOLUTIONS, INC.

CALOOSAHATCHEE RIVER ASR
EXPLORATORY WELL EXBRY-1
PAD MONITOR WELL WATER QUALITY
(field determined)

South Florida Water Management District
Berry Grove ASR Exploratory Well

Project No. 01-04340.A11

FDEP Permit No. 201247 -001-UC

Contractor: Diversified Drilling Corporation

Prepared by: A. McThenia

Sample Date: 4/13/04

Week # 49

WELL NUMBER	SAMW#1	SAMW#2	SAMW#3	SAMW#4
LOCATION	NE CORNER	NW CORNER	SE CORNER	SW CORNER
ELEVATION OF TOC' (NGVD)	24.67	24.32'	24.51'	24.69
DEPTH TO WATER (TOC')	3.10	3.28	3.05	3.32
WATER LEVEL (NGVD)	21.57	21.04'	21.46'	21.37
CHLORIDE (mQ/l)	46	156	84	124
CONDUCTIVITY (umhos/cm)	548	973	654	852
pH (standard units)	6.78	6.76	6.74	6.79
TOTAL DISSOLVED SOLIDS (mQ/l)	330	620	410	530
TEMPERATURE (OC)	23.6	24.7	23.3	22.9

*TOC: indicates the "top of the casing" of the Surficial Aquifer Monitoring Well
 † The well was damaged and repaired, the elevations are approximate.

WATER RESOURCE SOLUTIONS,INC.

CALOOSAHATCHEE RIVERASR
EXPLORATORY WELL EXBRY-1
PAD MONITOR WELL WATER QUALITY
(field determined)

South Florida Water Management District
Berry Grove ASR Exploratory Well

Project No. 01-04340.A11

FDEP Permit No. 201247 -OOI-UC Contractor: Diversified Drilling Corporation

Prepared by: A. McThenia

Sample Date: 4/20/04

Week#50

WELL NUMBER	SAMW#1	SAMW#2	SAMW#3	SAMW#4
LOCATION	NE CORNER	NW CORNER	SE CORNER	SW CORNER
ELEVATION OF TOC' (NGVD)	24.67	24.32'	24.51'	24.69
DEPTH TO WATER (TOC')	3.24	3.12	305	3.50
WATER LEVEL (NGVD)	2143	21.20'	2146'	21.19
CHLORIDE (mg/l)	46	124	76	94
CONDUCTIVITY (umhos/cm)	531	774	612	722
pH (standard units)	6.44	6.79	6.91	6.88
TOTAL DISSOLVED SOLIDS (mg/l)	380	480	400	440
TEMPERATURE (OC)	23.3	23.8	23.9	23.6

'TOC: indicates the "top of the casing" of the Surficial Aquifer Monitoring Well

1 The well was damaged and repaired, the elevations are approximate.

WATER RESOURCE SOLUTIONS, INC.

CALOOSAHATCHEE RIVER ASR
EXPLORATORY WELL EXBRY-1
PAD MONITOR WELL WATER QUALITY
(field determined)

South Florida Water Management District
Berry Grove ASR Exploratory Well

Project No. 01-04340.A11

FDEP Permit No. 201247 -001-UC Contractor: Diversified Drilling Corporation

Prepared by: A. McThenia

Sample Date: 4/27/04

Week # 51

WELL NUMBER:	SAMW#1	SAMW#2	SAMW#3	SAMW#4
LOCATION	NE CORNER	NW CORNER	SE CORNER	SW CORNER
ELEVATION OF TOC" (NGVD)	24.67	24.32'	24.51'	24.69
DEPTH TO WATER (TOC")	2.91	3.05	2.70	3.06
WATER LEVEL (NGVD)	21.76	21.27'	21.81'	21.63
CHLORIDE (mg/l)	48	110	92	86
CONDUCTIVITY (umhos/cm)	638	715	668	678
pH (standard units)	6.80	6.74	6.78	6.79
TOTAL DISSOLVED SOLIDS (mg/l)	330	410	400	420
TEMPERATURE (OC)	24.9	24.4	24.6	23.8

"TOC: indicates the "top of the casing" of the Surficial Aquifer Monitoring Well

1 The well was damaged and repaired, the elevations are approximate.

WATER RESOURCE SOLUTIONS, INC.

CALOOSAHATCHEE RIVER ASR
EXPLORATORY WELL EXBRY-1
PAD MONITOR WELL WATER QUALITY
(field determined)

South Florida Water Management District
Berry Grove ASR Exploratory Well

Project No. 01-04340.A11

FDEP Permit No. 201247 -OOI-UC Contractor: Diversified Drilling Corporation

Prepared by: A. McThenia

Sample Date: 5/5/04

Week#52

WELL NUMBER:	SAMW#1	SAMW#2	SAMW#3	SAMW#4
LOCATION	NE CORNER	NW CORNER	SE CORNER	SW CORNER
ELEVATION OF TOC" (NGVD)	24.67	24.32'	24.51'	24.69
DEPTH TO WATER (TOC")	3.22	3.24	3.31	3.34
WATER LEVEL (NGVD)	21.45	21.08'	21.20'	21.35
CHLORIDE (mQ/l)	54	130	152	112
CONDUCTIVITY (wmhos/cm)	533	776	858	780
pH (standard units)	6.75	6.89	6.87	6.87
TOTAL DISSOLVED SOLIDS (mQ/l)	350	470	520	470
TEMPERATURE (OC)	23.8	23.3	23.5	23.3

"TOC: indicates the "top of the casing" of the Surficial Aquifer Monitoring Well
 † The well was damaged and repaired, the elevations are approximate.

WATER RESOURCE SOLUTIONS, INC.

CALOOSAHATCHEE RIVER ASR
EXPLORATORY WELL EXBRY-1
PAD MONITOR WELL WATER QUALITY
(field determined)

South Florida Water Management District
Berry Grove ASR Exploratory Well

Project No. 01-04340.A11

FDEP Permit No. 201247 -001-UC

Contractor: Diversified Drilling Corporation

Prepared by: A. McThenia

Sample Date: 5/12/04

Week # 53

WELL NUMBER:	SAMW#1	SAMW#2	SAMW#3	SAMW#4
LOCATION	NE CORNER	NW CORNER	SE CORNER	SW CORNER
ELEVATION OF TOC' (NGVD)	24.67	24.32'	24.51'	24.69
DEPTH TO WATER (TOC')	3.14	3.12	2.91	3.22
WATER LEVEL (NGVD)	21.53	21.20'	21.60'	21.47
CHLORIDE (mg/l)	50	124	114	136
CONDUCTIVITY (umhos/cm)	578	784	755	843
pH (standard units)	6.68	6.75	6.82	6.86
TOTAL DISSOLVED SOLIDS (mg/l)	320	450	470	510
TEMPERATURE (OC)	23.6	23.1	23.6	23.2

*TOC: indicates the "top of the casing" of the Surficial Aquifer Monitoring Well

† The well was damaged and repaired, the elevations are approximate.

WATER RESOURCE SOLUTIONS, INC.

CALOOSAHATCHEE RIVER ASR
EXPLORATORY WELL EXBRY-1
PAD MONITOR WELL WATER QUALITY
(field determined)

South Florida Water Management District
Berry Grove ASR Exploratory Well

Project No. 01-04340.A11

FDEP Permit No. 201247 -001-UC

Contractor: Diversified Drilling Corporation

Prepared by: A. McThenia

Sample Date: 5/18/04

Week # 54

WELL NUMBER:	SAMW#1	SAMW#2	SAMW#3	SAMW#4
LOCATION	NE CORNER	NW CORNER	SE CORNER	SW CORNER
ELEVATION OF TOC' (NGVD)	24,67	24,32'	24,51'	24,69
DEPTH TO WATER (TOC')	2,95	2,83	2,62	2,91
WATER LEVEL (NGVD)	21,72	21,49'	21,89'	21,78
CHLORIDE (mg/l)	60	132	78	104
CONDUCTIVITY (umhos/cm)	533	775	720	632
pH (standard units)	6,40	6,61	6,76	6,78
TOTAL DISSOLVED SOLIDS (mg/l)	330	470	430	380
TEMPERATURE (OC)	23,8	23,6	23,6	24,0

'TOC: indicates the "top of the casing" of the Surficial Aquifer Monitoring Well
, The well was damaged and repaired, the elevations are approximate,

WATER RESOURCE SOLUTIONS, INC.

CALOOSAHATCHEE RIVER ASR
EXPLORATORY WELL EXBRY-1
PAD MONITOR WELL WATER QUALITY
(field determined)

South Florida Water Management District

Berry Grove ASR Exploratory Well

Project No. 01-04340.A11

FDEP Permit No. 201247 -OOI-UC

Contractor: Diversified Drilling Corporation

Prepared by: A. McThenia

Sample Date: 5/25/04

Week # 55

WELL NUMBER	SAMW#1	SAMW#2	SAMW#3	SAMW#4
LOCATION	NE CORNER	NW CORNER	SE CORNER	SW CORNER
ELEVATION OF TOC' (NGVD)	24.67	24.32'	24.51'	24.69
DEPTH TO WATER (TOC)	247	243	2.35	2.62
WATER LEVEL (NGVD)	22.20	21.89'	22.16'	22.07
CHLORIDE (mg/l)	66	128	76	96
CONDUCTIVITY (~mhos/cm)	456	777	540	616
pH (standard units)	6.59	6.60	6.77'	6.81
TOTAL DISSOLVED SOLIDS (mg/l)	330	450	380	430
TEMPERATURE (°C)	24.2	23.9	23.7	23.8

"TOC: indicates the "top of the casing" of the Surficial Aquifer Monitoring Well
The well was damaged and repaired, the elevations are approximate.

WATER RESOURCE SOLUTIONS, INC.

CALOOSAHATCHEE RIVER ASR
EXPLORATORY WELL EXBRY-1
PAD MONITOR WELL WATER QUALITY
(field determined)

South Florida Water Management District
Berry Grove ASR Exploratory Well

Project No. 01-04340.A11

FDEP Permit No. 201247 -001-UC

Contractor: Diversified Drilling Corporation

Prepared by: A. McThenia

Sample Date: 6/21/04

Week # 56

WELL NUMBER	SAMW#1	SAMW#2	SAMW#3	SAMW#4
LOCATION	NE CORNER	NW CORNER	SE CORNER	SW CORNER
ELEVATION OF TOC' (NGVD)	24.67	24.32'	24.51'	24.69
DEPTH TO WATER (TOC')	302	3.03	2.78	3.11
WATER LEVEL (NGVD)	21.65	21.29'	21.73'	21.58
CHLORIDE (mg/l)	52	142	90	126
CONDUCTIVITY (umhos/cm)	536	782	682	799
pH (standard units)	6.85	6.72	6.89	6.89
TOTAL DISSOLVED SOLIDS (mg/l)	340	460	410	470
TEMPERATURE (OC)	23.5	23.7	24.2	23.8

*TOC: indicates the "top of the casing" of the Surficial Aquifer Monitoring Well

† The well was damaged and repaired, the elevations are approximate.

WATER RESOURCE SOLUTIONS, INC.

CALOOSAHATCHEE RIVER ASR
EXPLORATORY WELL EXBRY-1
PAD MONITOR WELL WATER QUALITY
(field determined)

South Florida Water Management District
Berry Grove ASR Exploratory Well

Project No. 01-04340.A11

FDEP Permit No. 201247 -001-UC

Contractor: Diversified Drilling Corporation

Prepared by: A. McThenia

Sample Date: 6/9/04

Week # 57

WELL NUMBER:	SAMW#1	SAMW#2	SAMW#3	SAMW#4
LOCATION	NE CORNER	NW CORNER	SE CORNER	SW CORNER
ELEVATION OF TOC' (NGVD)	24.67	24.32'	24.51'	24.69
DEPTH TO WATER (TOC')	2.60	248	2.28	245
WATER LEVEL (NGVD)	22.07	22.84'	22.23'	22.24
CHLORIDE (mg/l)	64	142	136	204
CONDUCTIVITY (~mhos/cm)	496	762	744	1127
pH (standard units)	6.40	6.68	6.76	6.84
TOTAL DISSOLVED SOLIDS (mg/l)	350	500	510	750
TEMPERATURE (°C)	23.9	23.9	24.5	24.9

*TOC: indicates the "top of the casing" of the Surficial Aquifer Monitoring Well
 † The well was damaged and repaired, the elevations are approximate.

WATER RESOURCE SOLUTIONS, INC.

CALOOSAHATCHEE RIVER ASR
EXPLORATORY WELL EXBRY-1
PAD MONITOR **WELL** WATER QUALITY
(field determined)

South Florida Water Management District
Berry Grove ASR Exploratory Well

Project No. 01-04340.A11

FDEP Permit No. 201247 -OOI-UC

Contractor: Diversified Drilling Corporation

Prepared by: A. McThenia

Sample Date: 6/15/04

Week # 58

WELL NUMBER:	SAMW#1	SAMW#2	SAMW#3	SAMW#4
LOCATION	NE CORNER	NW CORNER	SE CORNER	SW CORNER
ELEVATION OF TOC' (NGVD)	24.67	24.32'	24.51'	24.69
DEPTH TO WATER (TOC')	2.98	2.96	2.77	2.93
WATER LEVEL (NGVD)	21.69	21.36'	21.74'	21.76
CHLORIDE (mg/l)	62	144	146	262
CONDUCTIVITY (~mhos/cm)	504	689	759	1090
pH (standard units)	6.40	6.63	6.65	6.75
TOTAL DISSOLVED SOLIDS (mg/l)	340	490	490	690
TEMPERATURE (OCI)	24.0	23.7	24.7	24.9

'TOC: indicates the "top of the casing" of the Surficial Aquifer Monitoring Well.

1 The well was damaged and repaired, the elevations are approximate.

WATER RESOURCE SOLUTIONS, INC.

CALOOSAHATCHEE RIVERASR
EXPLORATORY WELL EXBRY-1
PAD MONITOR WELL WATER QUALITY
(field determined)

South Florida Water Management District
Berry Grove ASR Exploratory Well

Project No. 01-04340.A11

FDEP Permit No. 201247-001-UC

Contractor: Diversified Drilling Corporation

Prepared by: A. McThenia

Sample Date: 6/22/04

Week#59

WELL NUMBER	SAMW#1	SAMW#2	SAMW#3	SAMW#4
LOCATION	NE CORNER	NW CORNER	SE CORNER	SW CORNER
ELEVATION OF TOC* (NGVD)	24.67	24.32'	24.51'	24.69
DEPTH TO WATER (TOC*)	3.00	3.01	2.73	3.02
WATER LEVEL (NGVD)	21.67	21.31'	21.78'	21.67
CHLORIDE (mg/l)	64	152	126	310
CONDUCTIVITY (umhos/cm)	525	785	737	1135
pH (standard units)	6.40	6.77	6.76	6.86
TOTAL DISSOLVED SOLIDS (moll)	360	530	510	740
TEMPERATURE (OC)	23.9	23.4	24.4	24.8

*TOC: indicates the "top of the casing" of the Surficial Aquifer Monitoring Well
 † The well was damaged and repaired, the elevations are approximate.

WATER RESOURCE SOLUTIONS, INC.

CALOOSAHATCHEE RIVER ASR
EXPLORATORY WELL EXBRY-1
PAD MONITOR WELL WATER QUALITY
(field determined)

South Florida Water Management District
Berry Grove ASR Exploratory Well

Project No. 01-04340.A11

FDEP Permit No. 201247-001-UC

Contractor: Diversified Drilling Corporation

Prepared by: A. McThenia

Sample Date: 6/29/04

Week # 60

WELL NUMBER:	SAMW#1	SAMW#2	SAMW#3	SAMW#4
LOCATION	NE CORNER	NW CORNER	SE CORNER	SW CORNER
ELEVATION OF TOC (NGVD)	24.67	24.32'	24.51'	24.69
DEPTH TO WATER (TOC)	3.25	3.17	2.76	3.31
WATER LEVEL (NGVD)	21.42	21.15'	21.75'	21.38
CHLORIDE (mQ/l)	64	146	136	212
CONDUCTIVITY (umhos/cm)	519	752	776	1044
pH (standard units)	6.17	6.41	6.75	6.63
TOTAL DISSOLVED SOLIDS (mQ/l)	450	680	640	760
TEMPERATURE (OC)	24.1	24.3	24.8	25.5

*TOC: indicates the "top of the casing" of the Surficial Aquifer Monitoring Well

† The well was damaged and repaired, the elevations are approximate.

APPENDIX 2-3

**RATE-OF-PENETRATION / WEIGHT-ON-BIT SUMMARY
AND
RATE-OF-PENETRATION / WEIGHT-ON-BIT PLOT**

**CALOOSAHATCHEE RIVER ASR
EXBRY-1 PILOT-HOLE DRILLING
RATE-OF-PENETRATION / WEIGHT-ON-BIT SUMMARY**

Depth (feet bpl)	Rate-of-Penetration (min/ft)	Weight-on-Bit (K lbs)
50	1	6
55	1	6
60	1	4
65	0.4	2
70	2	10
75	4	10
80	0.8	10
85	0.2	3
90	0.6	3
95	0.8	6
100	0.2	5
105	0.2	5
110	0.2	5
115	0.2	5
120	0.2	5
125	0.2	5
130	0.6	5
135	0.6	5
140	0.6	5
145	0.6	5
150	0.6	5
155	0.6	5
160	0.6	5
165	0.8	5
170	1	5
175	1	5
180	0.6	5
185	1	5
190	1	5
195	1.6	5
200	0.6	5
205	1.4	8
210	0.6	7
215	0.4	7
220	0.4	5
225	0.4	5
230	0.2	2
235	0.2	2
240	1.6	--
245	0.8	--
250	1	--
255	1.4	--
260	5.2	10
265	2	10
270	2.2	10
275	9	15
280	3.2	10
285	9	10
290	8	10
295	2.2	7

**CALOOSAHATCHEE RIVER ASR
EXBRY-1 PILOT-HOLE DRILLING
RATE-OF-PENETRATION / WEIGHT-ON-BIT SUMMARY**

Depth (feet bpl)	Rate-of-Penetration (min/ft)	Weight-on-Bit (K lbs)
300	2.2	7
305	7.8	10
310	9.2	5
315	1	5
320	0.2	5
325	1	5
330	1.2	7
335	0.6	7
340	1	7
345	0.6	7
350	0.6	7
355	0.8	7
360	1	7
365	1	7
370	1.6	10
375	3.4	10
380	4.6	10
385	5.4	10
390	5.6	10
395	1	10
400	0.8	10
405	1.2	10
410	0.6	10
415	0.6	10
420	1.4	10
425	1.2	10
430	0.8	10
435	1.6	12
440	1	12
445	0.8	7
450	1.2	10
455	1	10
460	0.8	10
465	1	7
470	1.2	7
475	0.8	7
480	10	10
485	1.2	15
490	0.9	7
495	0.6	10
500	1.2	7
505	0.6	7
510	0.8	7
515	0.6	7
520	0.8	7
525	1	7
530	1	7
535	1.2	7
540	1.2	7
545	2.4	10

**CALOOSAHATCHEE RIVER ASR
EXBRY-1 PILOT-HOLE DRILLING
RATE-OF-PENETRATION / WEIGHT-ON-BIT SUMMARY**

Depth (feet bpl)	Rate-of-Penetration (min/ft)	Weight-on-Bit (K lbs)
550	1.4	10
555	2	5
560	0.15	--
565	0.15	--
570	0.15	--
575	0.4	--
580	0.6	--
585	2.4	--
590	0.6	--
595	0.4	--
600	0.6	5
605	0.8	22
610	0.8	12
615	0.4	5
620	1.6	5
625	2.8	12
630	1.4	12
635	1.8	5
640	0.6	10
645	0.6	5
650	0.4	5
655	0.4	5
660	0.4	5
665	1	5
670	0.8	10
675	0.4	5
680	1.2	5
685	1.2	10
690	2.2	10
695	1	12
700	0.8	5
705	0.6	10
710	0.6	7
715	0.6	10
720	0.6	10
725	0.6	7
730	1.2	10
735	0.2	10
740	0.6	5
745	1	10
750	1.2	5
755	1	5
760	0.4	5
765	0.4	5
770	0.4	5
775	0.4	5
780	0.4	5
785	0.4	7
790	0.8	7
795	0.8	7

**CALOOSAHATCHEE RIVER ASR
EXBRY-1 PILOT-HOLE DRILLING
RATE-OF-PENETRATION / WEIGHT-ON-BIT SUMMARY**

Depth (feet bpl)	Rate-of-Penetration (min/ft)	Weight-on-Bit (K lbs)
800	0.3	7
805	0.3	10
810	0.3	10
815	0.3	10
820	0.6	10
825	0.3	7
830	0.3	10
835	0.3	10
840	0.3	5
845	0.6	5
850	0.6	5
855	0.6	5
860	0.6	5
865	0.6	10
870	0.6	10
875	0.6	10
880	0.6	18
885	1	7
890	1.2	18
895	1.2	12
900	1.2	12
905	0.4	12
910	0.2	5
915	0.6	5
920	0.6	5
925	0.2	7
930	0.2	5
935	0.2	5
940	0.2	5
945	0.4	5
950	0.4	5
955	0.2	5
960	0.2	5
965	0.8	5
970	0.6	10
975	0.4	5
980	0.4	5
985	3.2	10
990	4.4	10
995	0.6	5
1000	0.6	5
1005	0.2	5
1010	0.2	5
1015	0.2	5
1020	0.2	7
1025	0.2	7
1030	0.2	10
1035	0.4	7
1040	0.3	7
1045	0.3	7

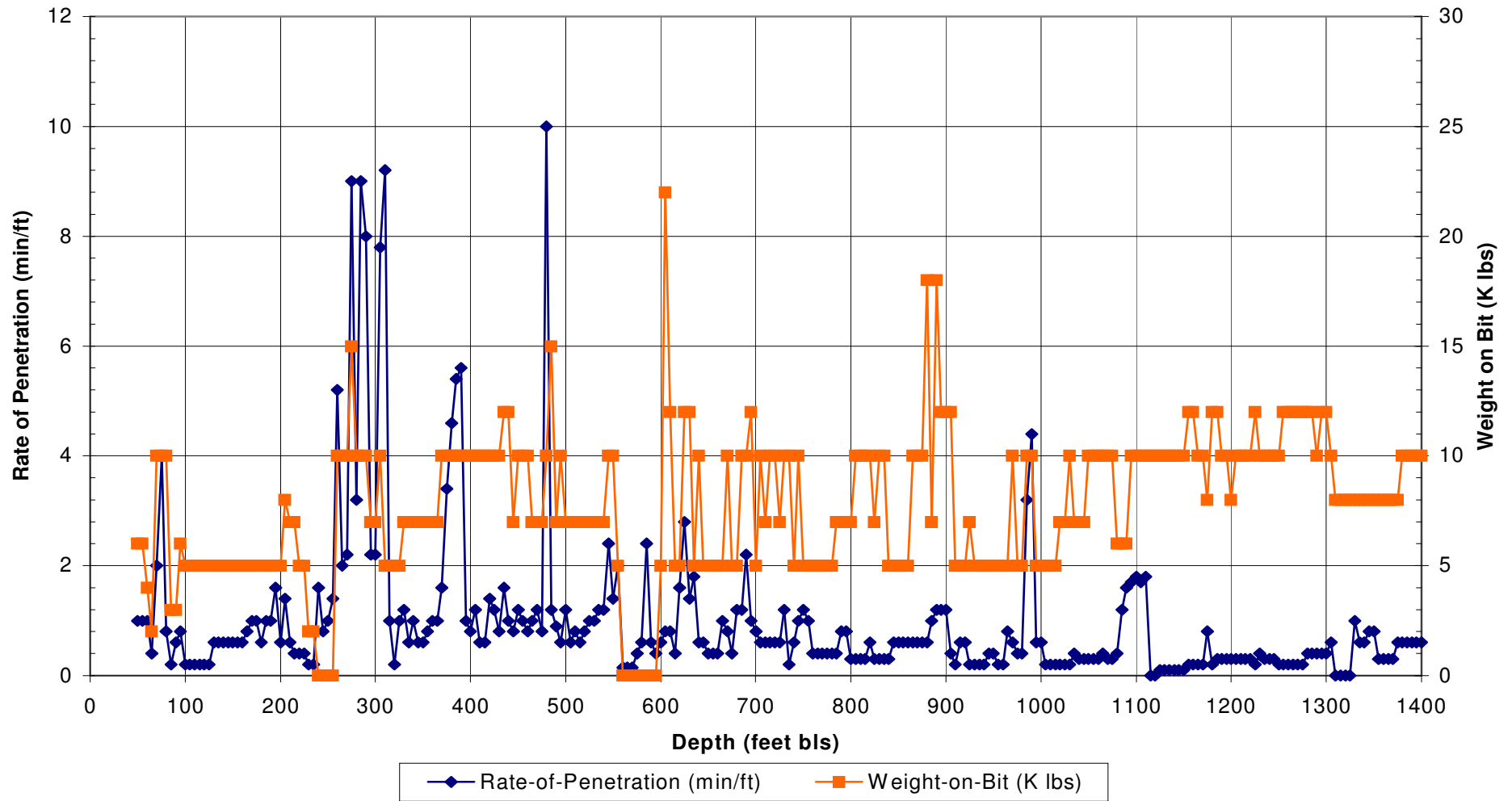
**CALOOSAHATCHEE RIVER ASR
EXBRY-1 PILOT-HOLE DRILLING
RATE-OF-PENETRATION / WEIGHT-ON-BIT SUMMARY**

Depth (feet bpl)	Rate-of-Penetration (min/ft)	Weight-on-Bit (K lbs)
1050	0.3	10
1055	0.3	10
1060	0.3	10
1065	0.4	10
1070	0.3	10
1075	0.3	10
1080	0.4	6
1085	1.2	6
1090	1.6	6
1095	1.7	10
1100	1.8	10
1105	1.7	10
1110	1.8	10
1115	--	10
1120	--	10
1125	0.1	10
1130	0.1	10
1135	0.1	10
1140	0.1	10
1145	0.1	10
1150	0.1	10
1155	0.2	12
1160	0.2	12
1165	0.2	10
1170	0.2	10
1175	0.8	8
1180	0.2	12
1185	0.3	12
1190	0.3	10
1195	0.3	10
1200	0.3	8
1205	0.3	10
1210	0.3	10
1215	0.3	10
1220	0.3	10
1225	0.2	12
1230	0.4	10
1235	0.3	10
1240	0.3	10
1245	0.3	10
1250	0.2	10
1255	0.2	12
1260	0.2	12
1265	0.2	12
1270	0.2	12
1275	0.2	12
1280	0.4	12
1285	0.4	12
1290	0.4	10
1295	0.4	12

**CALOOSAHATCHEE RIVER ASR
EXBRY-1 PILOT-HOLE DRILLING
RATE-OF-PENETRATION / WEIGHT-ON-BIT SUMMARY**

Depth (feet bpl)	Rate-of-Penetration (min/ft)	Weight-on-Bit (K lbs)
1300	0.4	12
1305	0.6	10
1310	--	8
1315	--	8
1320	--	8
1325	--	8
1330	1	8
1335	0.6	8
1340	0.6	8
1345	0.8	8
1350	0.8	8
1355	0.3	8
1360	0.3	8
1365	0.3	8
1370	0.3	8
1375	0.6	8
1380	0.6	10
1385	0.6	10
1390	0.6	10
1395	0.6	10
1400	0.6	10

**APPENDIX 2-3
CRASR EXBRY-1
Rate-of-Penetration/Weight-on-Bit Plot**



Water Resource Solutions

Project : CERP - EXBRY-1

Project Number: 01- 4792.01

Date: 1/18/05

APPENDIX 2-4
CASING MILL CERTIFICATES

24-INCH CASING

証明書番号

Certificate No. : UE-01-0273

頻度

Sampling Frequency : 1/ 100P/HEAT

Page : 6

単位
Unit : FT-LBS

	Test Temperature	Energy		Fracture(%)		試片寸法 Specimen Size
		Min.	Ave.	Min.	Ave.	
TRANSVERSE BODY	14.0°F	-	-			10 X 6.7 2mm V Notch

製造番号 Manufacture No.		17-00066										
鋼番 管理Code-Heat No.		1-7528										
TRANSVERSE BODY (CENTER) 14.0°F	1	21.0										
	2	22.0										
	3	22.0										
	Ave.	22.0										
	1											
	2											
	3											
	Ave.											
	1											
	2											
	3											
	Ave.											
	1											
	2											
	3											
	Ave.											
	1											
	2											
	3											
	Ave.											

note
: Energy
: Fracture

化学成分

Chemical Composition

証明書番号

BASE METAL

Certificate No. : UE-01-0273

頻度

Sampling Frequency : 2/ 1HEAT

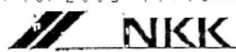
Page : 1

製造番号		17-00064		17-00066	
Management Code-Heat No.		1-7528		1-7528	
		Min.	Max.		
C	% L	0.22	0.14	0.14	
	% P	0.22	0.13	0.13	
Si	% L	-	0.29	0.29	
	% P	-	0.27	0.28	
Mn	% L	1.20	1.16	1.16	
	% P	1.20	1.15	1.16	
P	% L	0.025	0.017	0.017	
	% P	0.025	0.018	0.018	
S	% L	0.015	0.009	0.009	
	% P	0.015	0.010	0.010	
Cu	% L	-	0.01	0.01	
	% P	-	0.01	0.01	
Ni	% L	-	0.02	0.02	
	% P	-	0.02	0.02	
Cr	% L	-	0.04	0.04	
	% P	-	0.04	0.04	
Mo	% L	-	0.00	0.00	
	% P	-	0.00	0.00	
V	% L	-	0.006	0.006	
	% P	-	0.006	0.006	
Nb	% L	-	0.000	0.000	
	% P	-	0.000	0.000	
Ti	% L	-	0.000	0.000	
	% P	-	0.000	0.000	
B	% L	-	0.0000	0.0000	
	% P	-	0.0000	0.0000	
Nb+V +Ti	% L	0.15	0.01	0.01	
	% P	0.15	0.01	0.01	
Ce _q . 7B	% L				
	% P	0.43	0.33	0.33	
P _{cm} .	% L				
	% P	0.25	0.20	0.20	
	% L				
	% P				
	% L				
	% P				
	% L				
	% P				
	% L				
	% P				
	% L				
	% P				
	% L				
	% P				

Note L: Ladle Analysis - とりべ分析

P: Product Analysis - 製品分析

Ce_q. 7B = C+Mn/6+(Cu+Ni)/15+(Cr+Mo+V)/5P_{cm}. = C+Si/30+(Mn+Cu+Cr)/20+Ni/60+Mo/15+V/10+5B



日本鋼管株式会社
NKK CORPORATION

検査証明書 INSPECTION CERTIFICATE

本社: 〒100-8202 東京都千代田区丸の内1丁目1番2号
Head Office: 1-1-2, MARUNOUCHI, CHIYODA-KU, TOKYO 100-8202 JAPAN

NO. 1143 1. J

買主
Purchaser

証明書番号 Certificate No.: UE-01-0273- 1/ 1
発行日 Date: JUL. 23, 2001

買主管理番号 Purchaser's Order No.: PT-5764

注文書番号 Reference No.: 002438 78970A**

注文者 Trading Co.: ITOCHU CORPORATION

品名 Commodity: SUBMERGED ARC WELDED STEEL PIPE (U.O.E)
規格 Specification: API 5L-X42-PSL2/B-PSL2
仕様 Specification: & CUSTOMER'S SPEC.

船番 Ship's No.:
工事番号 Construction No.:
寸法 Size (ODxWT): 34INX0.375IN
MPS No.:

買主管理番号 Purchaser's Order No.	契約番号一行番 Contract No.	長さ Length ()	本数 Number of Pieces	総長さ Total Length	質量 Mass (Kgs)
	U047111-004	40FT	26		63,596
TOTAL			26		63,596

Ladle Analysis		化学成分 (Chemical Composition) (%)															
P: 分析 Product Analysis	W: 析出物 Deposited Metal	C	SI	Mn	P	S	Cu	NI	Cr	Mo	Co	Nb	V	TI	Al	B	N
B: 母材 Base Metal	L	MIN															
O: 外面 Outside		MAX															
I: 内面 Inside	FB	MIN															
		MAX															
製造番号 Mf. No.	熱番号 Heat No.	※A	※1	X	1	0	0	X	1	0	0	X	1	0	0	X	1

引張試験 (Tensile Test)				曲げ試験 (Bend Test)				硬度試験 (Hardness Test)					
製造番号 Mf. No.	熱番号 (Heat No.)	引張		曲げ		硬度		引張	曲げ	硬度	引張	曲げ	硬度
		力 Y.S	延伸 T.S	径 EI	径 YRX	方法 Method	荷重 Load						
MIN.													
MAX.													
MIN.													
MAX.													

衝撃試験 (Charpy Impact Test)						落重試験 (Drop weight Tear Test)					
試験位置 ()						試験温度 ()					
製造番号 Mf. No.	熱番号 (Heat No.)	位置		温度		位置	温度	位置		温度	
		1	2	1	2			1	2		
MIN.											
MAX.											
MIN.											
MAX.											

検査項目 Inspection Item	検査結果 Inspection Results (G=GOOD)				HARDNESS AS PER NACE MR01-75	
	目視 Visual	水素 Hydro	厚さ K2	厚さ NDI	厚さ Coating	厚さ Test
寸法 Dimension	G	10 SEC. G	G	G	G	G
非破壊検査 Non-Destructive Inspection	G					
超音波検査 Ultrasonic Inspection	G					
磁気粒子検査 Magnetic Particle Inspection	G					
浸透検査 Dye Penetrant Inspection	G					

上記商品は検査の結果指定の規格に合格していることを証明いたします。
We hereby certify that the material herein has been made and tested in accordance with the above specification and also with the requirements called for by the above order.

T. Ikemoto
Manager of Inspection Sec.

34-INCH CASING



SAW PIPES USA, Inc
PO Box 2349
Baytown, TX 77522-2349

Metallurgical and Pipe Test Report

Date: **1/22/02** PO Number: **TBR-5181** MTR NUMBER: **26218**

Approved: *ASW* Date: *9/20/02*

MAS PIPE & STEEL
144 HIGHLAND RD.
MORNING ROUGE, LA 70809

Customer Address:
MAS PIPE & STEEL
CUSTOMER PICK-UP
API 5L January 2000 42nd Ed.

Weld seam inspected by fluoroscopic NDE method.

Diameter: **42** Wall: **.375** Grade: **B/X42 PSL1** Heat Number: **5G7718**

Hydrotest Results

YDRO PSI: **680** HYDRO TIME: **10** Seconds (Min)

Physical Testing Results

Trans Body Tensile	Weld Tensile	Guided Bend (weld)
Yield PSI	Tensile PSI	Root
50934	66794	OK
Tensile PSI	C Width	Face
66013	1.485	OK
Elongation-%		
40		
C Width		
1.511		

Weld Tensile Fracture location:
Base Metal

Comments

MEETS NACE MR 0175;
SR 15 AND SR 18

DSAW MATERIAL

CERTIFIED COPY

THESE MILL TEST REPORTS APPLY TO

YOUR P.O. # 20628

BARTOW STEEL REF. # 26219

Chemical Analysis Results

Heat	C:	Mn:	P:	S:	Si:	Cu:	Ni:	Cr:	Mo:	Al:	V:	Ti:	Nb:	CK
5G7718	0.1	0.94	0.013	0.013	0.2	0.06	0.07	0.04	-0.01	0.034	-0.005	0.003	-0.01	0.28
Product 1	0.11	0.95	0.013	0.013	0.2	0.064	0.07	0.035	0.003	0.04	0.002	0.002	0.001	0.29
Product 2	0.1	0.95	0.013	0.013	0.2	0.064	0.069	0.035	0.003	0.036	0.002	0.002	0.001	0.28

42-INCH CASING

APPENDIX 2-5
CERTIFICATE OF CALIBRATION

Florida Automatic Controls Company, Inc.

FAX (813) 254-7213 PHONE (813) 251-1358/251-1359 504 SOUTH HOWARD AVE. TAMPA, FLORIDA 33606

CERTIFIED CALIBRATION CHART

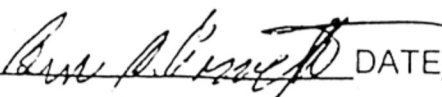
CUSTOMER DIVERSIFIED DRILLING

CUSTOMER ORDER NO. _____ DATE 10/21/03 GAUGE NO 300# DURA GAUGE #18

GAUGE DESCRIPTION 45 1279AS 02L 300# DURA GAUGE

TRUE VALUE	INDICATED VALUE
0	0
50	50
100	100
150	150
200	200
250	250

CALIBRATION STANDARD Dead Weight Tester SERIAL NO. 2MH-27999

TESTED BY: BEN CORVETTE  DATE 10/21/03

THIS IS TO CERTIFY THAT THIS GAUGE HAS BEEN INSPECTED, ADJUSTED AND TESTED AGAINST PRESSURE STANDARD DEADWEIGHT TESTER TRACEABLE TO THE NATIONAL INSTITUTE OF STANDARDS AND TECHNOLOGY. ACCURACY TEST REFERENCE NO. 731-238622-87, COMPENSTATED TO LOCAL ACCELERATION DUE TO GRAVITY WITH ACCURACY OF 1/20 OF 1%.

WATER RESOURCE SOLUTIONS, INC.

CALOOSAHATCHEE RIVER ASR
EXPLORATORY WELL EXBRY-1

Well No.: CRASR EXBRY-1 Gauge SN: 2MH-27999

Starting Date/Time: 10-22-03 12:30 Starting Pressure: 101.5 psi

Casing Diameter: 24-inches Ending Pressure: 99.7 psi

Elapsed Time (minutes)	Pressure (psi)	Pressure Change (psi)	Percent Change
0	101.5	0	0
5	101.5	0	0
10	101.5	0	0
15	101.0	- 0.5	- 0.49
20	100.8	- 0.7	- 0.70
25	100.4	- 1.1	- 1.08
30	100.2	- 1.3	- 1.28
35	100.0	- 1.5	- 1.48
40	99.9	- 1.6	- 1.58
45	99.8	- 1.7	- 1.67
50	99.8	- 1.7	- 1.67
55	99.7	- 1.8	- 1.77
60	99.7	- 1.8	- 1.77

Witnessed by:

Approximately 7.5 to 8 gallons of water were discharged from the casing during the pressure release.

[Signature]
Signature

Signature

Water Resource Solutions, Inc.
Firm/Organization

Firm/Organization

[Signature]
Signature

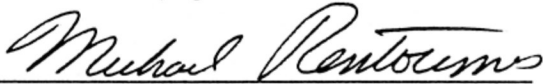
DDC
Firm/Organization

APPENDIX 2-6
INITIAL NPDES SCREENING RESULTS

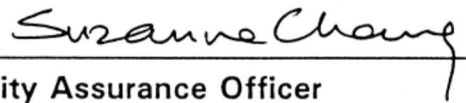
CERTIFICATE OF ANALYSIS

Analyses contained herein conform to EPA, Standard Methods and DEP approved methods, unless otherwise noted. Subcontracted analyses are denoted by certification number in the analyst column. All relevant quality assurance samples were within specified control limits unless otherwise stated. Uncertainties for test results are available upon request. Envirodyne certifies its test results meet all requirements of the NELAC Standards, where applicable. For questions, please call the project manager at the number listed above.

This is the last page of the report. See bottom of page for total pages.



Project Manager



Quality Assurance Officer

CERTIFICATE OF ANALYSIS

Diversified Drilling Corporation
5620 Lee Street
Lehigh Acres, FL 33971

October 30, 2003
Report: 2003/10569
Sample No: 2003/10569- 1

Attention: Bill Musselwhite

Project: 2080 Caloosahatchee ASR Well
LaBelle, FL

SAMPLE ID: Reservoir Water

Collected by: Rudy Prescott

Collected on: 10/29/03

Received on: 10/29/03

Date of Analysis: 10/30/03

Date of Extraction: 10/29/03

8310 POLYNUCLEAR AROMATIC HYDROCARBONS

PARAMETER	RESULT	DL UNITS	ANALYST
Acenaphthene	U	0.10 µg/L	KYT
Acenaphthylene	U	0.10 µg/L	KYT
Anthracene	U	0.10 µg/L	KYT
Benzo(a)anthracene	U	0.10 µg/L	KYT
Benzo(b)fluoranthene	U	0.10 µg/L	KYT
Benzo(g,h,i)perylene	U	0.10 µg/L	KYT
Benzo(k)fluoranthene	U	0.10 µg/L	KYT
Benzo(a)pyrene	U	0.10 µg/L	KYT
Chrysene	U	0.10 µg/L	KYT
Dibenzo(a,h)anthracene	U	0.10 µg/L	KYT
Fluoranthene	U	0.10 µg/L	KYT
Fluorene	U	0.10 µg/L	KYT
Indeno(1,2,3-c,d)pyrene	U	0.10 µg/L	KYT
1-Methylnaphthalene	U	0.10 µg/L	KYT
2-Methylnaphthalene	U	0.10 µg/L	KYT
Naphthalene	U	0.10 µg/L	KYT
Phenanthrene	U	0.10 µg/L	KYT
Pyrene	U	0.10 µg/L	KYT

U = Analyte not detected
DL = Detection Limit

QA/QC Review 5
Laboratory Certification No. E86188

CERTIFICATE OF ANALYSIS

Diversified Drilling Corporation
5620 Lee Street
Lehigh Acres, FL 33971

October 30, 2003
Report: 2003/10569
Sample No: 2003/10569- 1

Attention: Bill Musselwhite

Project: 2080 Caloosahatchee ASR Well
LaBelle, FL

SAMPLE ID: Reservoir Water

Collected by: Rudy Prescott

Collected on: 10/29/03

Received on: 10/29/03

Date of Analysis: 10/29/03

8021B HALOGENATED & AROMATIC VOLATILE ORGANICS

PARAMETER	RESULT	DL UNITS	ANALYST
1,1,2-Trichloroethane	U	1.0 µg/L	CVM
Trichloroethylene	U	1.0 µg/L	CVM
Trichlorofluoromethane	U	1.0 µg/L	CVM
1,2,3-Trichloropropane	U	1.0 µg/L	CVM
Vinyl chloride	U	1.0 µg/L	CVM
Benzene	U	1.0 µg/L	CVM
Ethylbenzene	U	1.0 µg/L	CVM
Toluene	U	1.0 µg/L	CVM
Xylenes, Total	U	1.0 µg/L	CVM
Methyl-tert-butyl-ether	U	1.0 µg/L	CVM

U = Analyte not detected
DL = Detection Limit

QA/QC Review 
Laboratory Certification No. E86181

CERTIFICATE OF ANALYSIS

Diversified Drilling Corporation
 5620 Lee Street
 Lehigh Acres, FL 33971

October 30, 2003
 Report: 2003/10569
 Sample No: 2003/10569- 1

Attention: Bill Musselwhite

Project: 2080 Caloosahatchee ASR Well
 LaBelle, FL

SAMPLE ID: Reservoir Water

Collected by: Rudy Prescott

Collected on: 10/29/03

Received on: 10/29/03

Date of Analysis: 10/29/03

8021B HALOGENATED & AROMATIC VOLATILE ORGANICS

PARAMETER	RESULT	DL UNITS	ANALYST
Benzyl chloride	U	1.0 µg/L	CVM
Bromodichloromethane	U	0.5 µg/L	CVM
Bromoform	U	1.0 µg/L	CVM
Bromomethane	U	1.0 µg/L	CVM
Bromobenzene	U	1.0 µg/L	CVM
Carbon tetrachloride	U	1.0 µg/L	CVM
Chlorobenzene	U	1.0 µg/L	CVM
Chloroethane	U	1.0 µg/L	CVM
2-Chloroethylvinyl ether	U	1.0 µg/L	CVM
Chloroform	U	1.0 µg/L	CVM
Chloromethane	U	1.0 µg/L	CVM
Dibromochloromethane	U	0.5 µg/L	CVM
Dibromomethane	U	1.0 µg/L	CVM
1,2-Dichlorobenzene	U	1.0 µg/L	CVM
1,3-Dichlorobenzene	U	1.0 µg/L	CVM
1,4-Dichlorobenzene	U	1.0 µg/L	CVM
Dichlorodifluoromethane	U	1.0 µg/L	CVM
1,1-Dichloroethane	U	1.0 µg/L	CVM
1,2-Dichloroethane	U	1.0 µg/L	CVM
1,1-Dichloroethene	U	1.0 µg/L	CVM
cis-1,2-Dichloroethylene	U	1.0 µg/L	CVM
trans-1,2-Dichloroethylene	U	1.0 µg/L	CVM
Dichloromethane	U	5.0 µg/L	CVM
1,2-Dichloropropane	U	1.0 µg/L	CVM
cis-1,3-Dichloropropene	U	1.0 µg/L	CVM
trans-1,3-Dichloropropene	U	1.0 µg/L	CVM
1,1,1,2-Tetrachloroethane	U	1.0 µg/L	CVM
1,1,2,2-Tetrachloroethane	U	0.4 µg/L	CVM
Tetrachloroethylene	U	1.0 µg/L	CVM
1,1,1-Trichloroethane	U	1.0 µg/L	CVM

U=Analyte not detected
 DL=Detection Limit

QA/QC Review 
 Laboratory Certification No. E86181

CERTIFICATE OF ANALYSIS

Diversified Drilling Corporation
5620 Lee Street
Lehigh Acres, FL 33971

October 30, 2003
Report: 2003/10569
Sample No: 2003/10569- 1

Attention: Bill Musseluhite

Project: 2080 Caloosahatchee ASR Well
LaBelle, FL

SAMPLE ID: Reservoir Water

Collected by: Rudy Prescott

Collected on: 10/29/03
Received on: 10/29/03

PARAMETER	RESULT	METHOD	DL UNITS	DATE	ANALYST
Cadmium	U	200.7	0.0040 mg/L	10/29/03	DNR
Copper	U	200.7	0.010 mg/L	10/29/03	DNR
Lead	0.0087	200.7	0.0050 mg/L	10/29/03	DNR
Zinc	0.031	200.7	0.010 mg/L	10/29/03	DNR
Mercury	U	245.1	0.000025 mg/L	10/29/03	DNR
Chromium, Hexavalent	U	SM3500CR-D	0.010 mg/L	10/29/03	JMJ
pH (Laboratory)	8.0	150.1	pH Units	10/29/03	MEM
Total Organic Carbon	0.91	415.1	0.50 mg/L	10/29/03	JMJ

U = Analyte not detected
DL = Detection Limit

QA/QC Review 
Laboratory Certification No. E86188

CHAIN OF CUSTODY RECORD AND ANALYSIS REQUEST

PROJECT NUMBER	PROJECT NAME	P.O. NUMBER	SAMPLE TYPE	NO. OF CONTAINERS	PRESERVATIVE	ANALYSES REQUESTED	RUSH TAT (SURCHARGE)	
2080	Caloosahatchee ASR				None		24 hr	
PROJECT LOCATION		CLIENT ADDRESS		ANALYSES REQUESTED		RUSH TAT (SURCHARGE)		
Labelle, Florida - Berry Graves		5620 Lee Str.		TCC		24 hr		
Diversified Drilling		PHONE 339-308-6404 FAX		TCC		24 hr		
CLIENT NAME		SAMPLE INFORMATION		ANALYSES REQUESTED		RUSH TAT (SURCHARGE)		
Diversified Drilling		RESERVOIR WATER SAMPLE		TCC		24 hr		
NUMBER	DATE	TIME	IDENTIFICATION	SOLID	LIQUID	AIR	NON-AQUEOUS LIQUID	REMARKS
1	10-29-03	8:40am	Reservoir water sample	✓	✓	✓	✓	
2								
3								
4								
5								
6								
7								
8								
9								
10								
SAMPLE COLLECTED BY Budy Prescott				ARE THESE SAMPLES LISTED OR CHARACTERISTIC HAZARDOUS WASTE? <input type="checkbox"/> YES <input type="checkbox"/> NO				TOTAL OF ALL CONTAINERS
SEND REPORT TO (PERSON) Bill Mussell				ARE THESE SAMPLES FROM <input type="checkbox"/> PETROLEUM <input type="checkbox"/> DRY CLEANER OR <input type="checkbox"/> OTHER SITE?				
SAMPLES CONDITION Intact 4°				RELINQUISHED BY Budy Prescott		RECEIVED BY Sandra Magray		DATE 10-29-03
LOG NUMBER 2003 10569				DATE 10/29/03 12:48pm		TIME 4		TIME 12:48