



RMBAKER LLC
Geology and Geophysics

WELL L-1983
UWI L-1983

8600 Oldbridge Lane
Orlando, FL 32819
mobile ph 407-733-8958

LOG STAGE EXPLORATORY

rob@rmbaker.com
www.rmbaker.com

HEADER NOTES:

COMP RMBAKER LLC
LOC LEE COUNTY
FLD LEE COUNTY
CNTY LEE
STAT FL
PROV FL
CTRY USA

LATI 26.511910 X
LONG -81.725590 Y
GDAT WGS84 HDAT
SEC ELEV 66
TWP V DAT
RGE
ALL SERVICES:
CALIPER
NATURAL GAMMA
DUAL INDUCTION
ELECTRIC
SONIC
ACOUSTIC TELEVIEWER
VIDEO

PERMANENT DATUM:
LOG MEASURED FROM: GROUND SURFACE
DRILLING MEASURED FROM:

DATE	04 Dec 14	TYPE FLUID IN HOLE	WATER
RUN No	1	LOGGING SPEED (FT/MIN)	30
TYPE LOG	COMPOSITE	TROLLING DIRECTION	UP
DEPTH-DRILLER		PUMPING RATE (GPM)	
DEPTH-LOGGER	336.35		
DRILLER			
RECORDED BY	RMB		
SRVC	RMBAKER LLC	API	N/A
WITNESSED BY	E. GEDDES	LIC	N/A
BOREHOLE RECORD			
RUN NO.	BIT FROM	TO	CASING RECORD
1	3.875	186.9	SIZE 4 MAT. PVC FROM 0 TO 186.9

LOG CODES

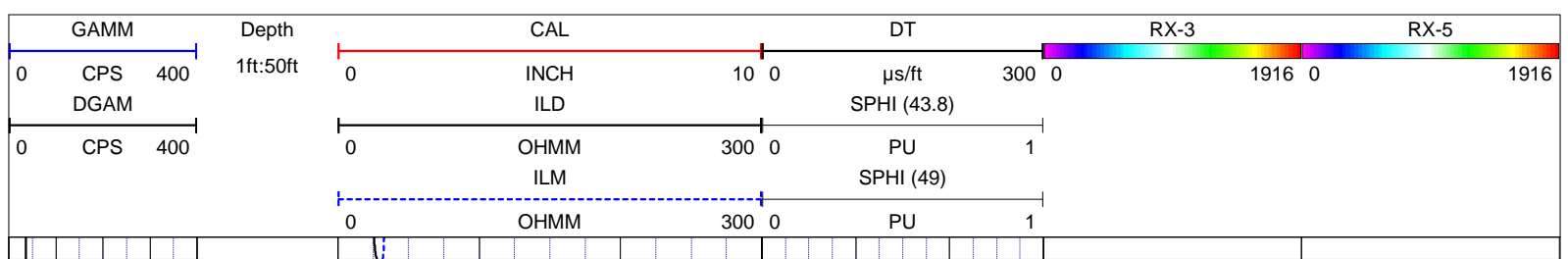
3-arm caliper	CAL	long normal resistivity	RLN	deep induction conductivity	IDC
natural gamma (CPS)	GAMM	8 inch resistivity	R8	shallow induction conductivity	ISC
spontaneous potential	ESP	32 inch resistivity	R32	sonic interval velocity	DT
single point resistance	RES	deep induction resistivity	ILD	sonic porosity (RHG method)	SPHI
short normal resistivity	RSN	shallow induction resistivity	ILM	repeat designation	R

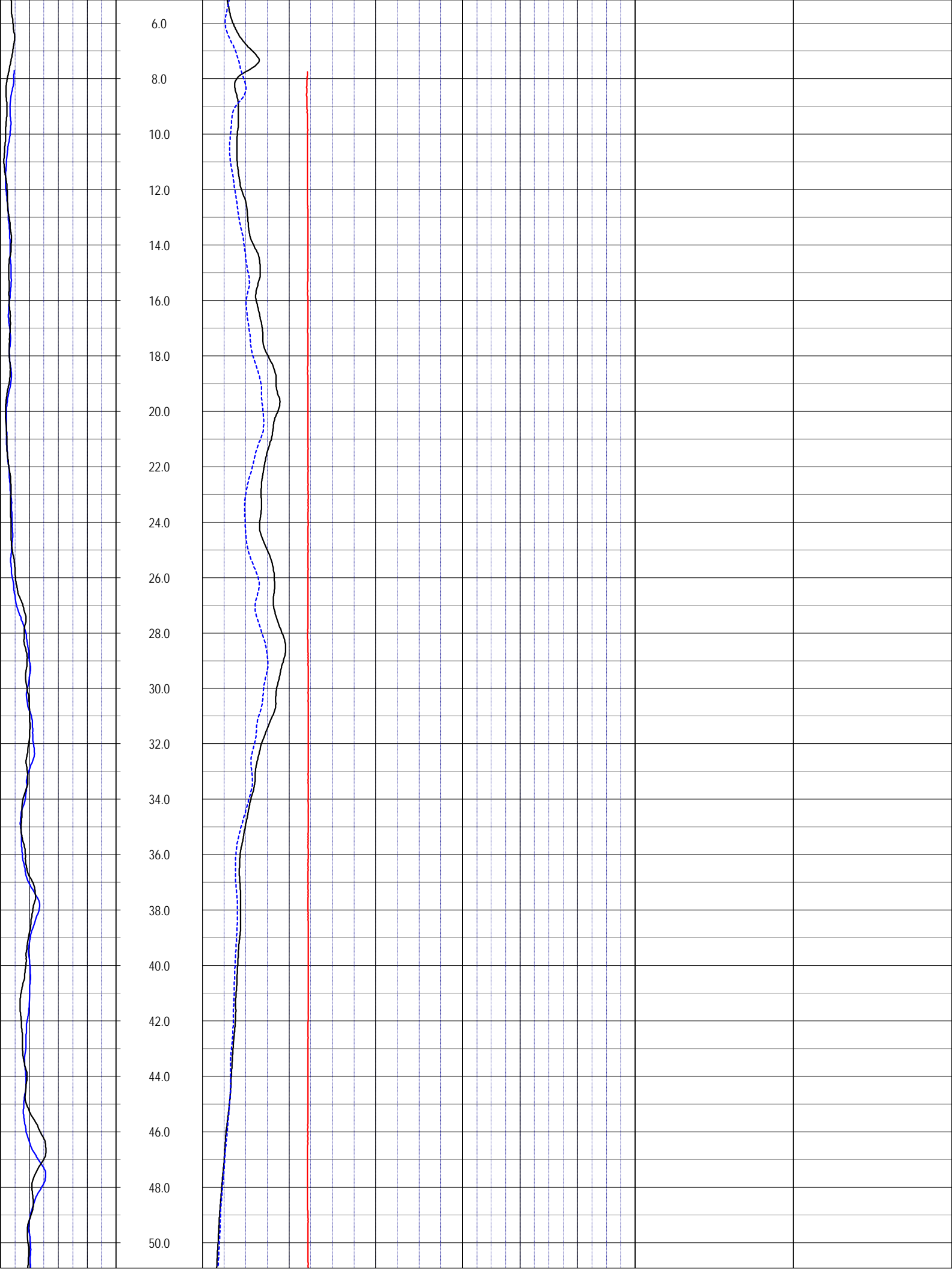
SONIC POROSITY:

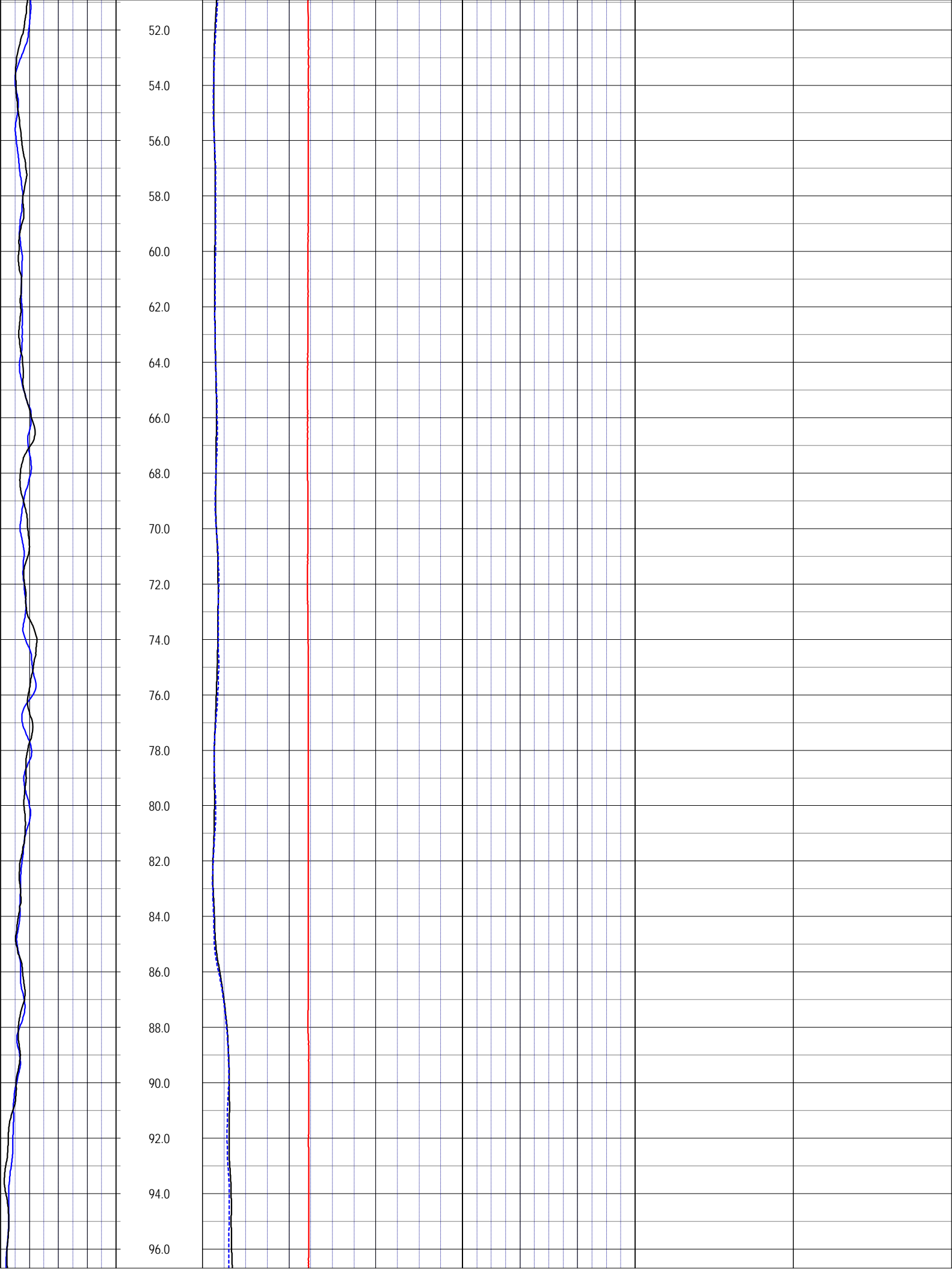
Assuming a carbonate formation, the porosity can be calculated using the Raymer-Hunt-Gardner (RHG) equation:

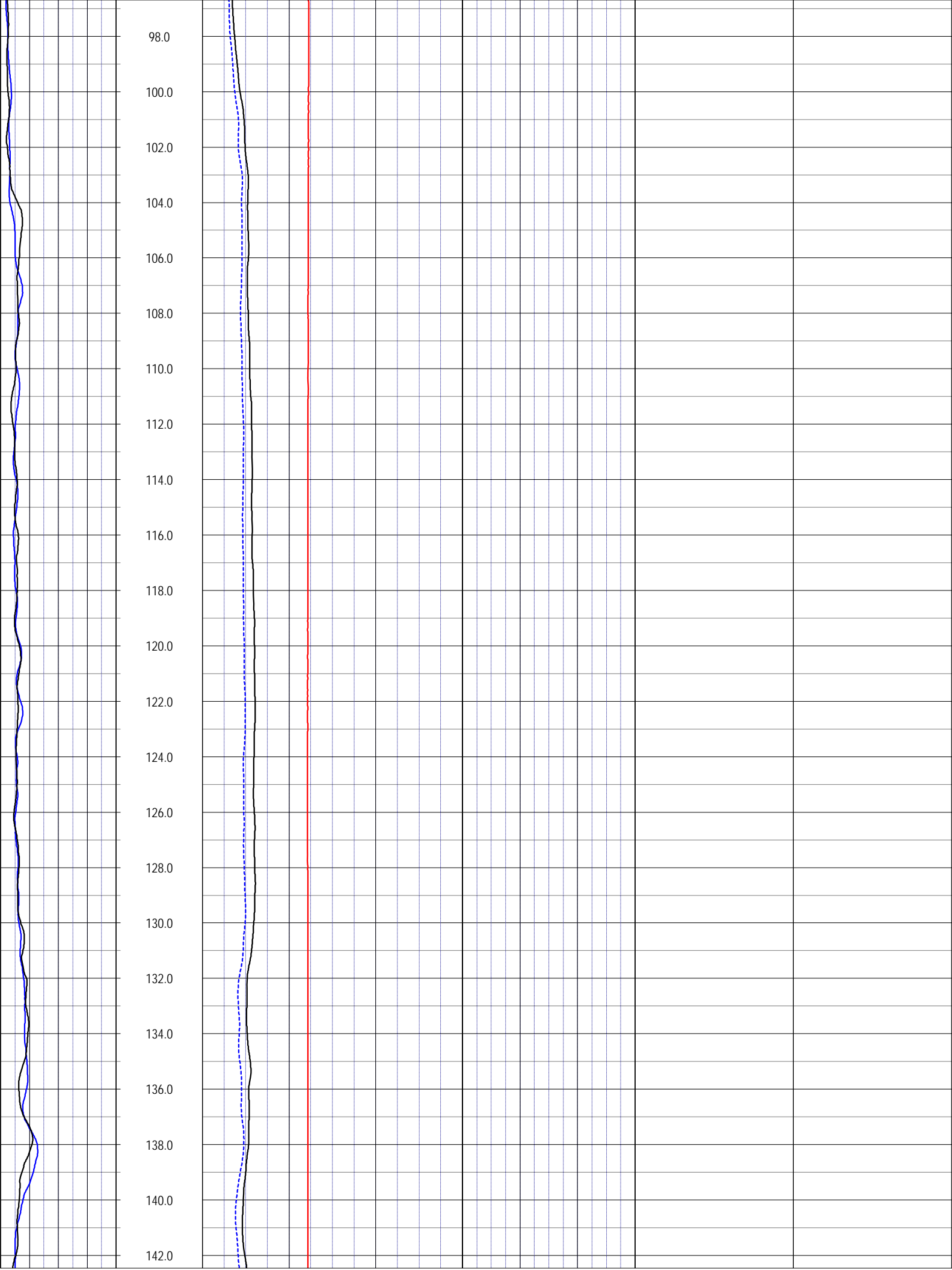
$$\text{porosity} = 5/8 \times ((\text{TT of log} - \text{TT of matrix}) / \text{TT of log}), \text{ where "TT of log" is the measured sonic value and the "TT of matrix" is a constant.}$$

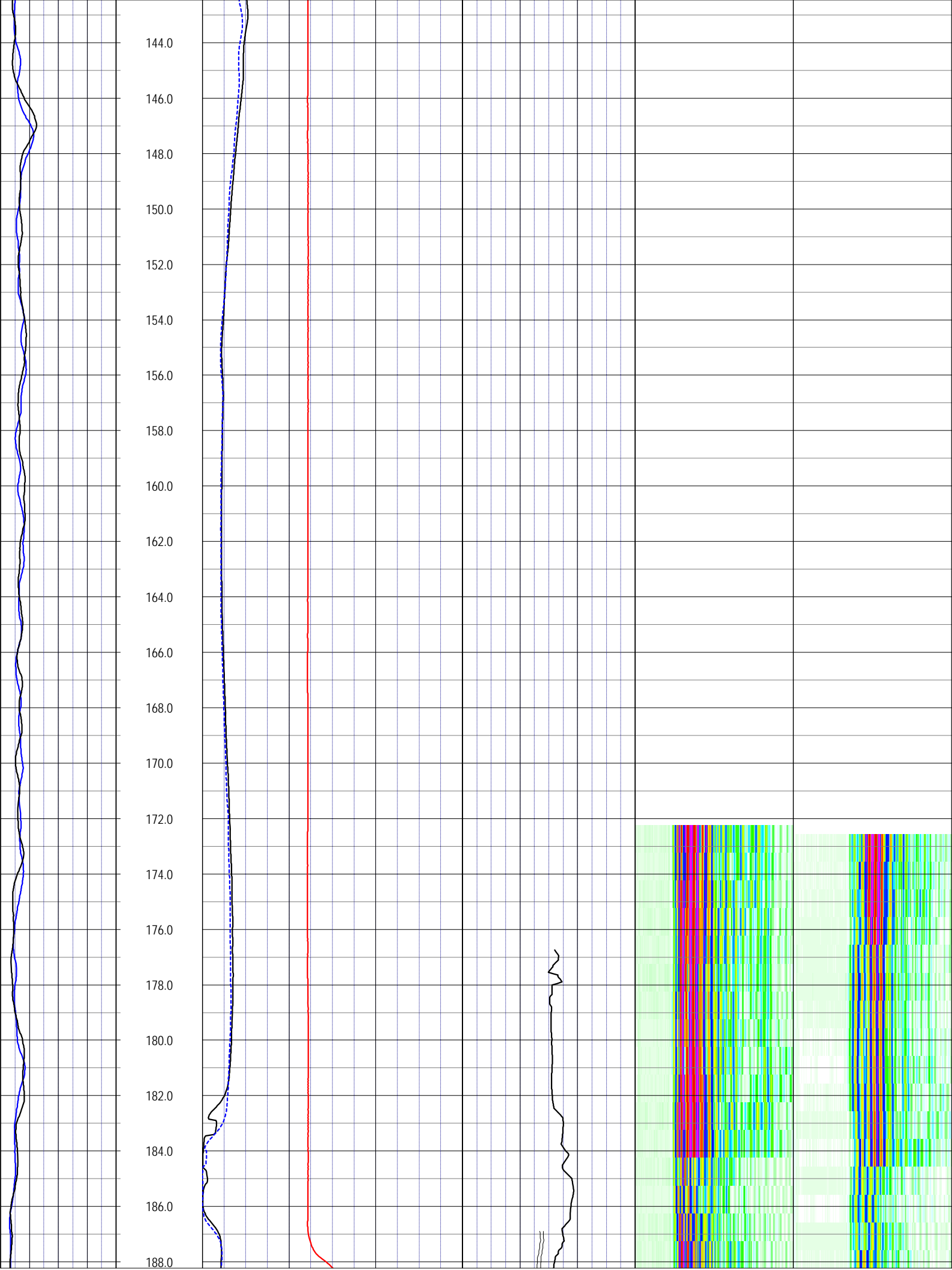
The TT of matrix for dolostone is 43.8 microseconds per foot, and for limestone is 49 microseconds per foot.

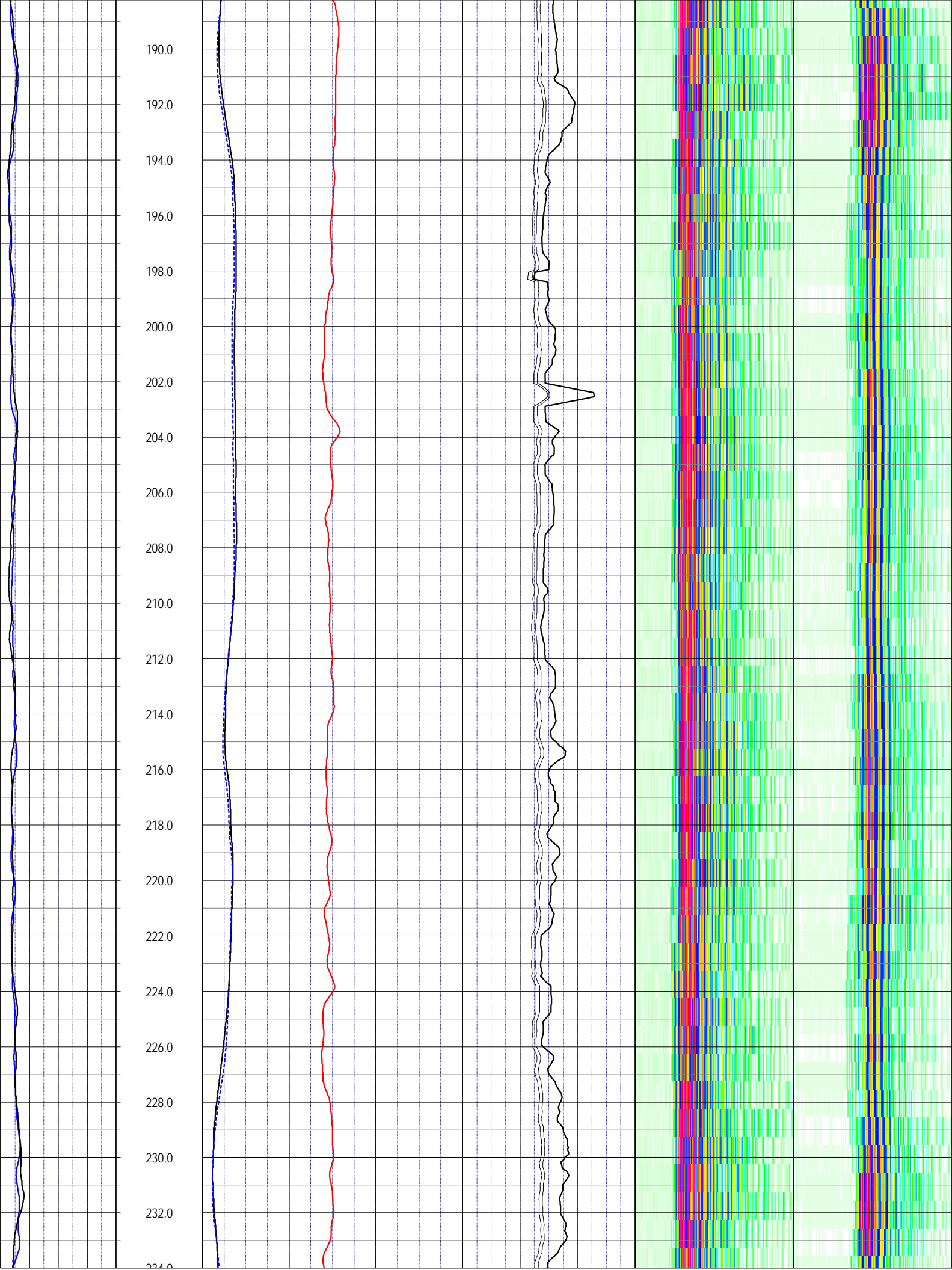


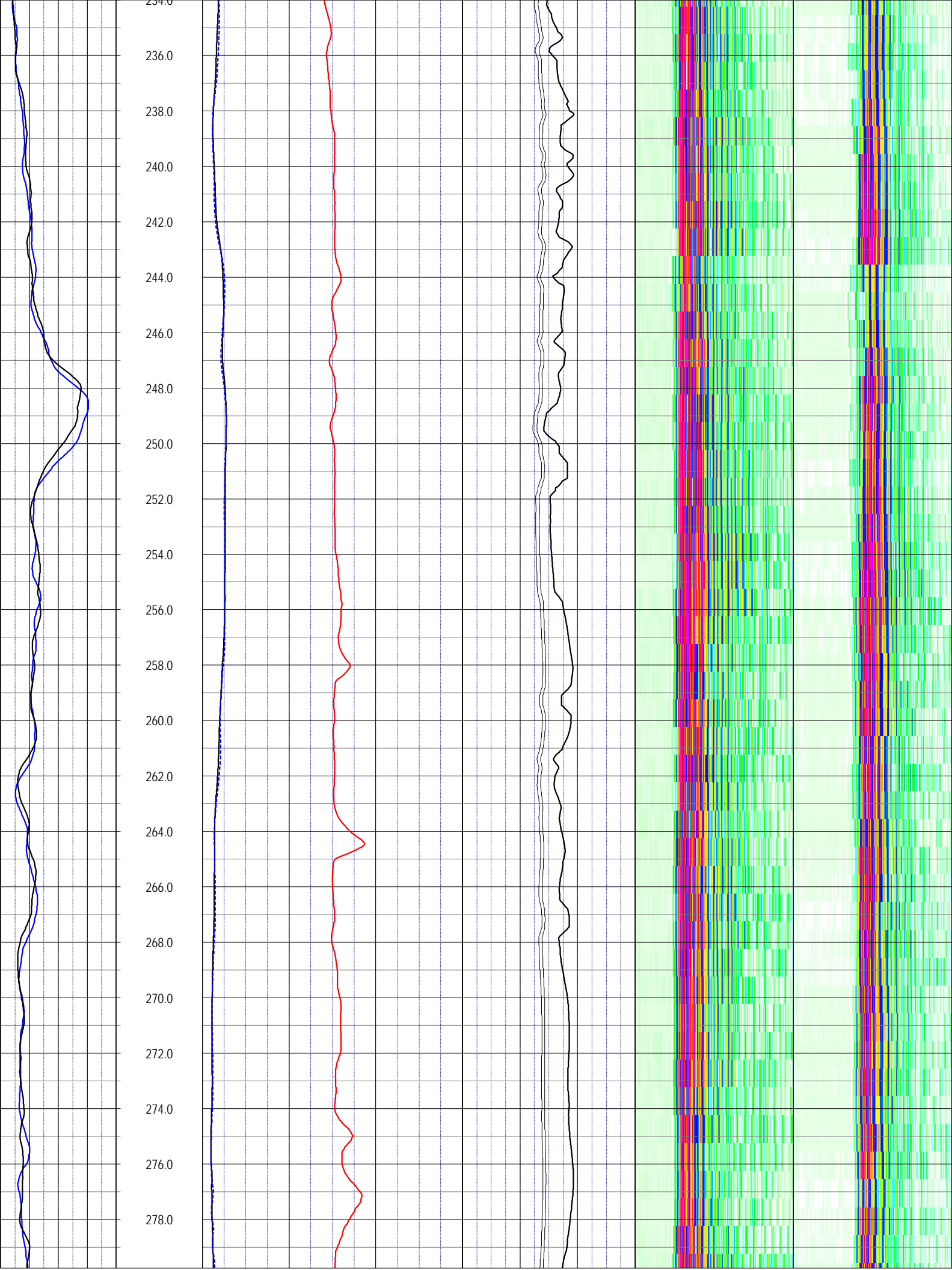


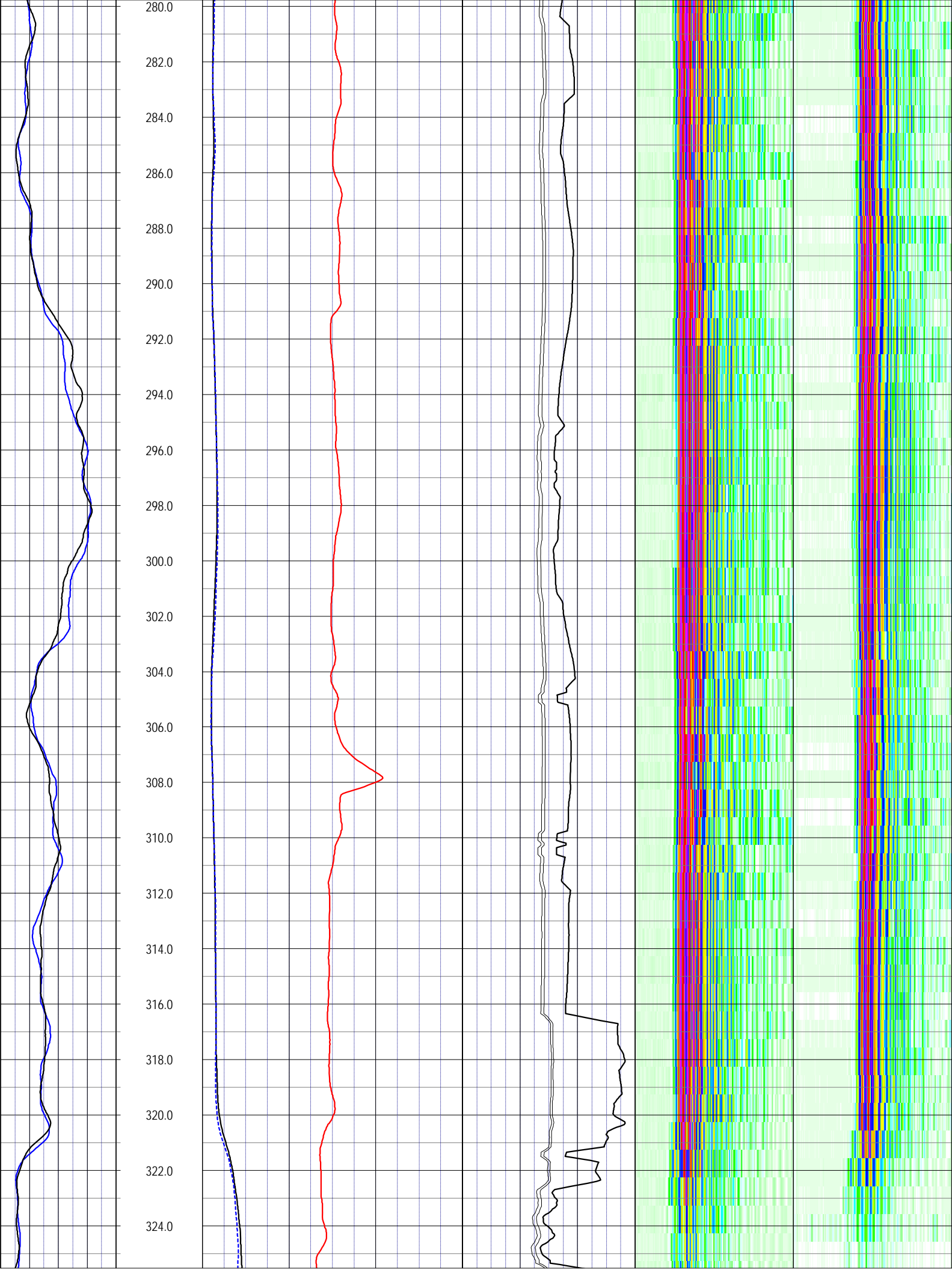


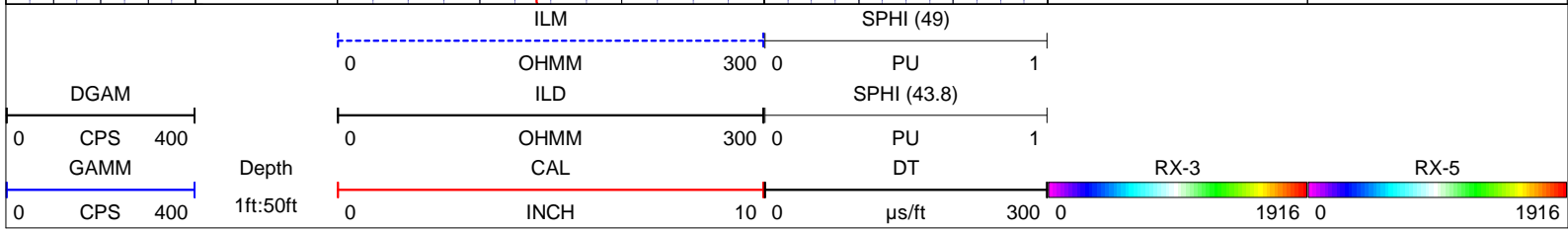
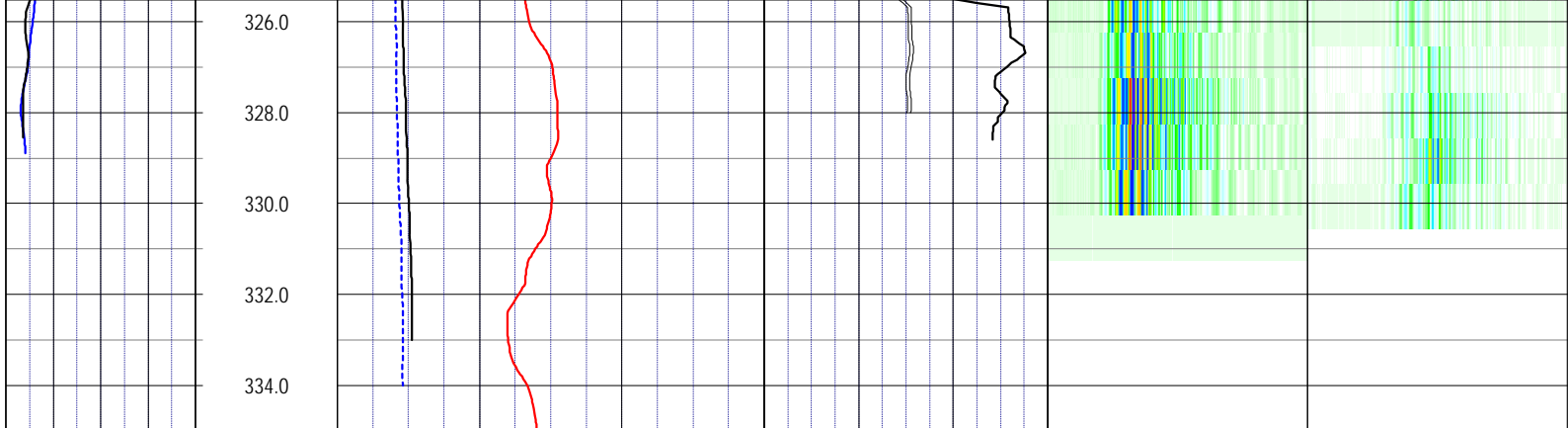












NOTES:

While due care has been exercised in the performance of these measurements and observations, in accordance with methodologies utilized by the general practitioner, RMBAKER LLC can make no representations, warranties, or guarantees with respect to latent or concealed conditions that may exist, which may be beyond the detection capabilities of the methodologies used, or that may extend beyond the areas and depths surveyed.
 The geophysical well logs show subsurface conditions as they existed at the dates and locations shown, and it is not warranted that they are representative of subsurface conditions at other locations and times.
 If, at any time, different subsurface conditions from those observed are determined to be present, we must be advised and allowed to review and revise our observations if necessary.

Certificate of Authorization GB 458

END OF LOG