

L2 - TW

Site Description: Fenced in, open, grassy field

Lat / Long: 264510.243 / 812818.466

Datum: NAD - 27

Site Owner: S.F.W.M.D. (verify ?)

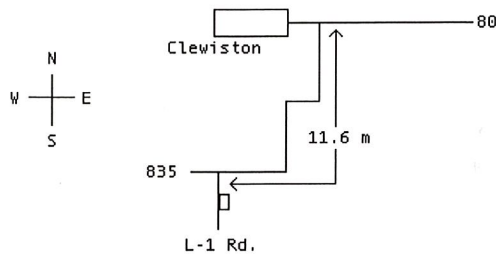
Digital Photos: 1403-1408

Site Contact: Michael Bennett

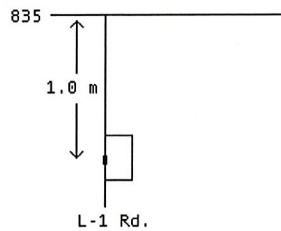
Contact Number: 561-682-6822

Written Directions: From the intersection of SR-80 and SR-835, go south on SR-835. The road will turn west and then south and then west again. Travel 11.6 miles from SR-80 to L-1 Rd. Turn south on L-1 Rd. and proceed 1.0 miles. L2 - TW is in a fenced in field on the east side of the road. There is a grey gate with a master - master lock on it. L2 - TW is on the north end of the field. L2 - PW 1 is located east of L2 - PW 2 on the south end of the field. There is a 2" surficial well just north of the entrance gate.

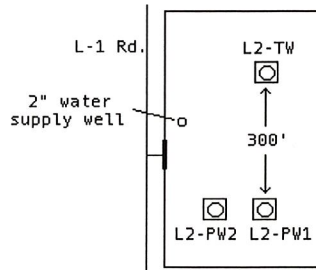
ROAD MAP



SITE MAP



LOCATION MAP



Well Info: L2-TW is a 4" steel well with a brass gate valve. It is on a 4' 1" by 3' 9" slab with an elevation of 17.84'. L2-Tw needs painting and grouting at the base. The casing is solid but bubbled. Posts are needed around the wells. L2-PW1 is a 12" steel well with a 10" gate valve discharge on a 4' square slab. L2-PW2 is a 10" steel well with a 3" ball valve and a 6" butterfly valve discharge on a 3' 10" square slab. Both production wells are in good condition.



Photo 1: L2-PW1 and L2-PW2, view from the south.



Photo 2: View towards L2-TW from L2-PW1

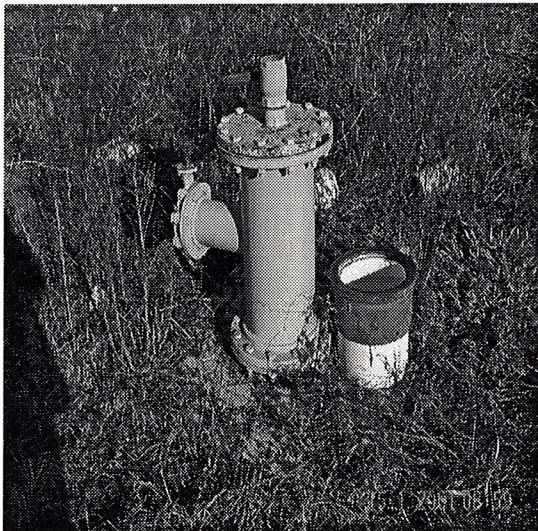


Photo 3: L2-PW ~~1~~ 2

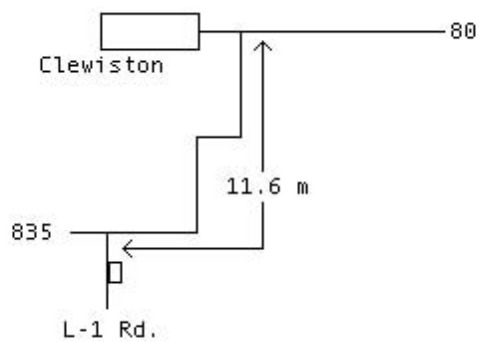
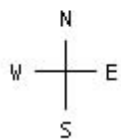


Photo 4: L2-TW

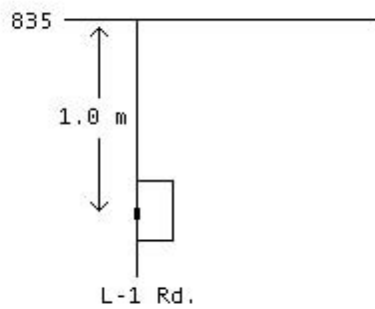


8. 5. 1999 12:20

ROAD MAP



SITE MAP



LOCATION MAP

