



RMBAKER LLC

WELL L63N
UWI L63N

Geology and Geophysics

8600 Oldbridge Lane
Orlando, FL 32819
mobile ph 407-733-8958

PROFESSIONAL LICENSES
Geologist PG2186
Licensed Geology Business

rob@rmbaker.com
www.rmbaker.com

HEADER NOTES:

COMP SFWMD
LOC L63N CONTINUOUS CORE
FLD L63N CONTINUOUS CORE
CNTY OKEECHOBEE
STAT FL
PROV FL
CTRY USA

LATI X
LONG Y
GDAT WGS84
SEC HDAT
TWP ELEV
RGE V DAT

ALL SERVICES:
CALIPER
NATURAL GAMMA
ELECTRIC
DUAL INDUCTION
SONIC
WATER QUALITY
FLOWMETER

PERMANENT DATUM:
LOG MEASURED FROM: GROUND SURFACE

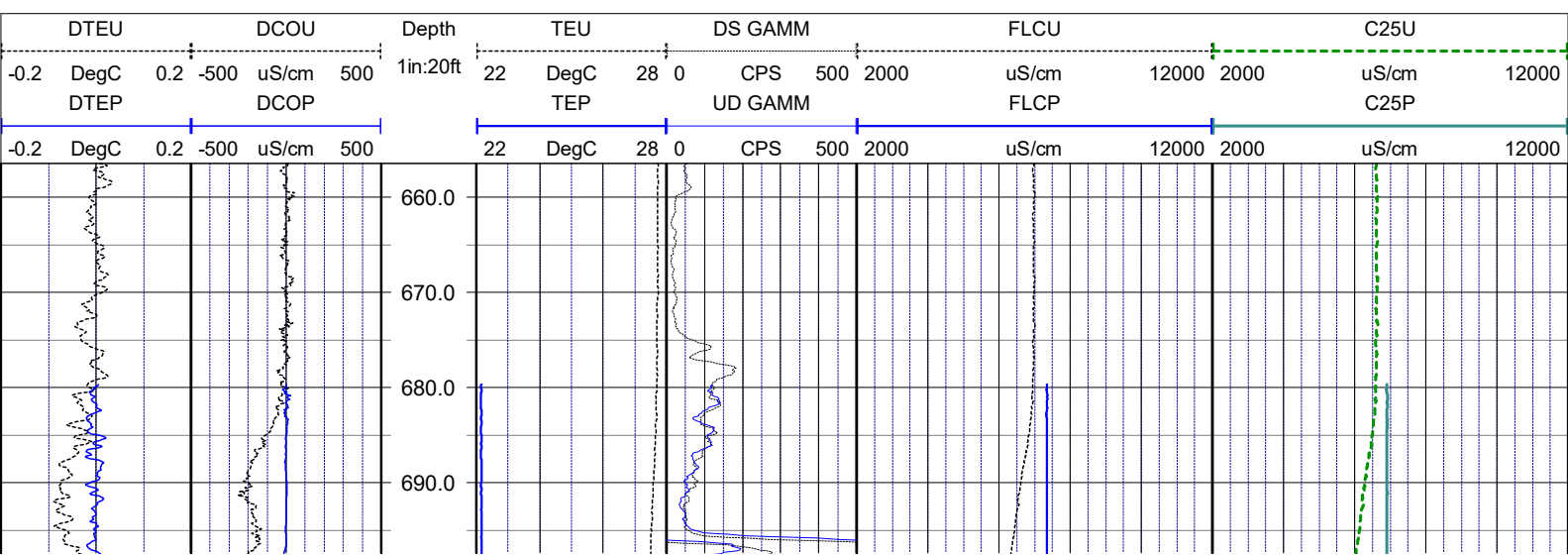
DRILLING MEASURED FROM: FLOW CONTROL FLANGE-29 INCHES A.G.

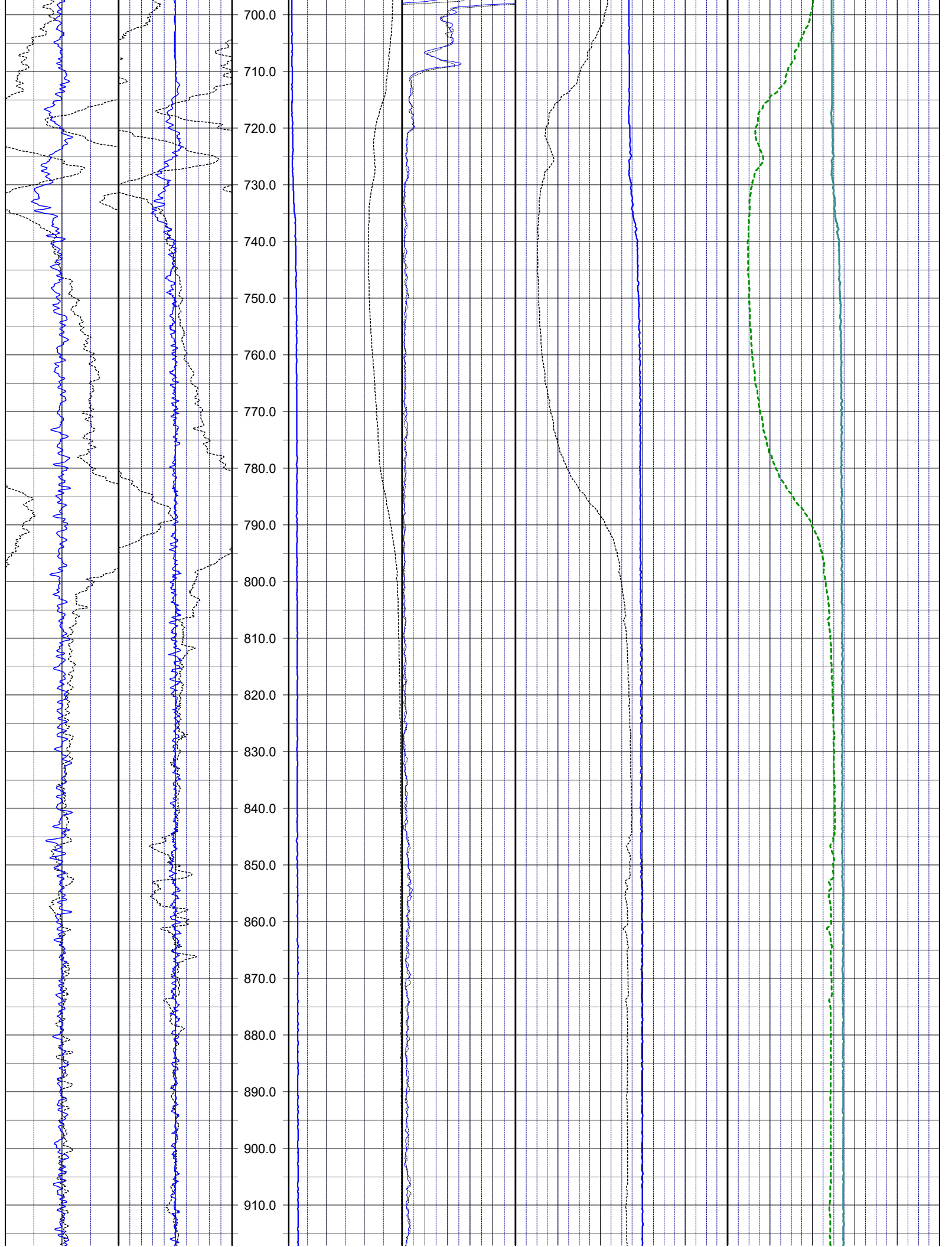
DATE	26 Mar 21	TYPE FLUID IN HOLE	WATER
RUN No	2	LOGGING SPEED (FT/MIN)	32
TYPE LOG	WATER QUALITY	TROLLING DIRECTION	BOTH
DEPTH-DRILLER	1360	PUMPING RATE (GPM)	NATURAL FLOW
DEPTH-LOGGER	1357.05		
DRILLER	HUSS DRILLING		
RECORDED BY	RMB		
SRVC	RMBAKER LLC	API	N/A
WITNESSED BY	STANTEC	LIC	N/A

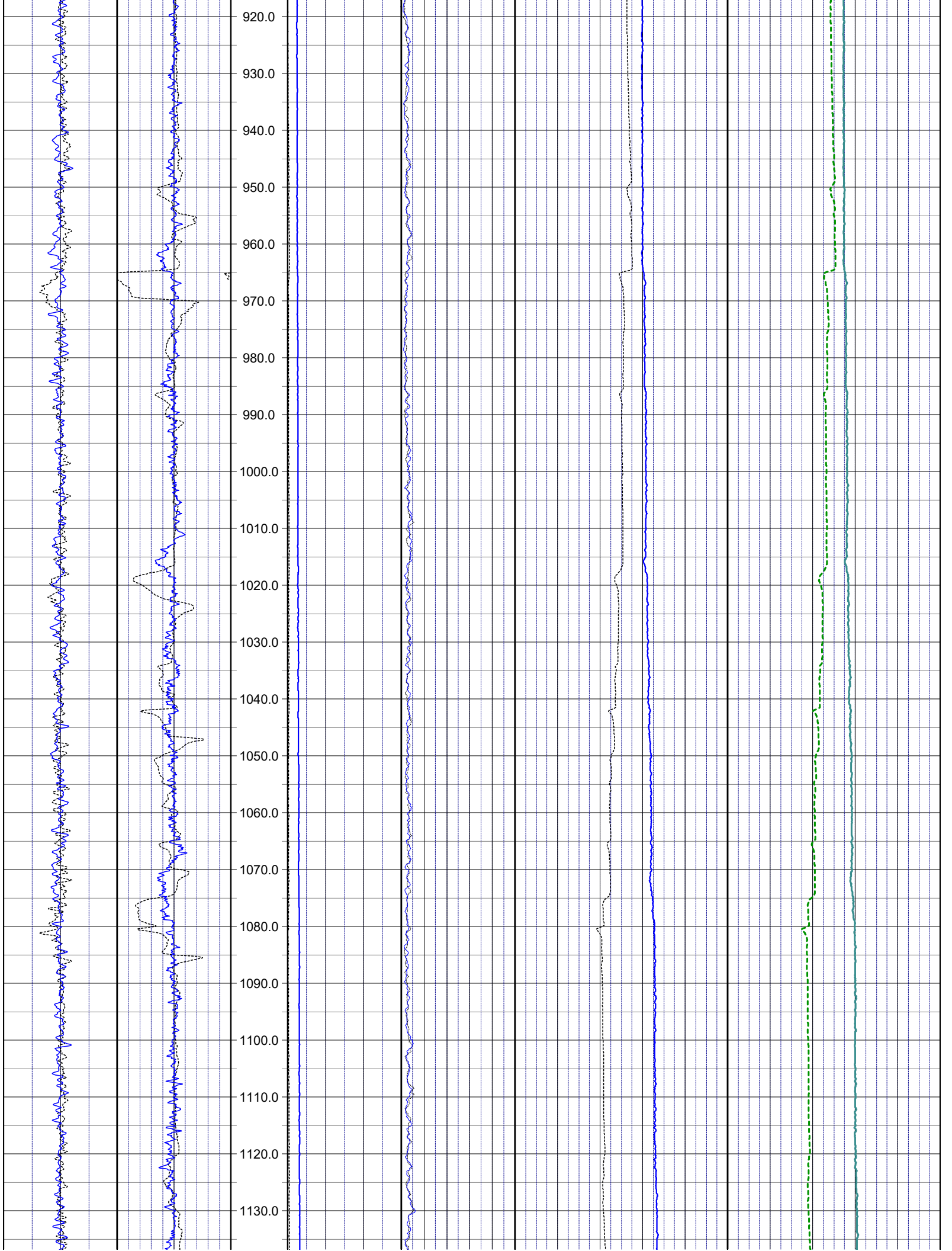
BOREHOLE RECORD		CASING RECORD				
RUN NO.	BIT FROM	TO	SIZE	MAT.	FROM	TO
1	5.875	165	703	STEEL	0	165
2	4.875	701	1357.05	STEEL	0	701

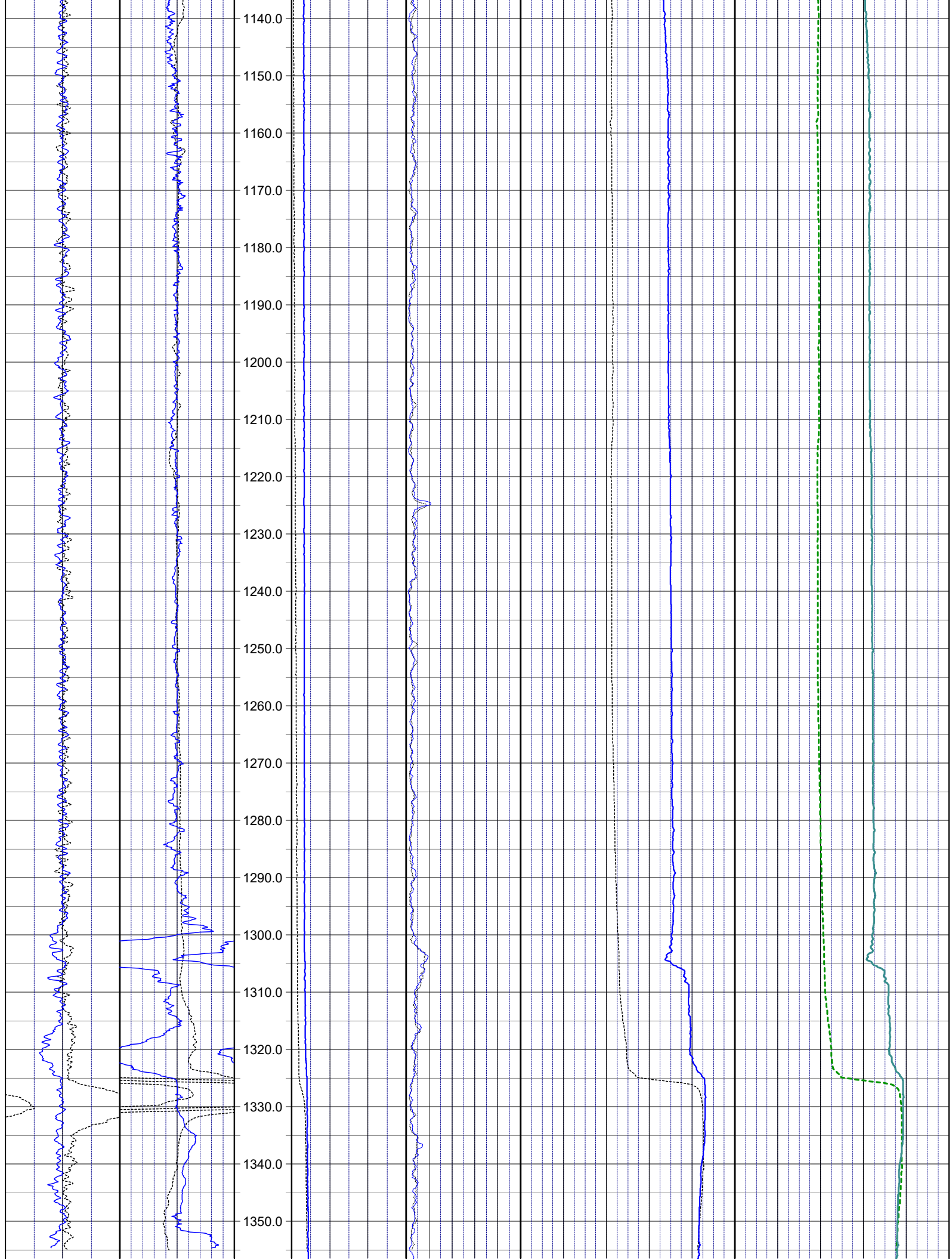
WATER QUALITY LOG CODES

static fluid temperature	TEU	dynamic fluid conductivity	FLCP	caliper	CAL
dynamic fluid temperature	TEP	static differential cond.	DCOU	repeat designation	R
static differential temperature	DTEU	dynamic differential cond.	DCOP	natural gamma	GAMM
dynamic differential temp.	DTEP	static specific conductance	C25U	calibration correction	C
static fluid conductivity	FLCU	dynamic specific conductance	C25P		









-0.2	DegC	0.2	-500	uS/cm	500	22	DegC	28	0	CPS	500	2000	uS/cm	12000	2000	uS/cm	12000	
DTEP				DCOP		TEP				UD GAMM		FLCP			C25P			
-0.2	DegC	0.2	-500	uS/cm	500	1in:20ft	22	DegC	28	0	CPS	500	2000	uS/cm	12000	2000	uS/cm	12000
DTEU				DCOU		Depth	TEU				DS GAMM		FLCU			C25U		

NOTES:

While due care has been exercised in the performance of these measurements and observations, in accordance with methodologies utilized by the general practitioner, RMLBAKER LLC can make no representations, warranties, or guarantees with respect to latent or concealed conditions that may exist, which may be beyond the detection capabilities of the methodologies used, or that may extend beyond the areas and depths surveyed.

The geophysical well logs show subsurface conditions as they existed at the dates and locations shown, and it is not warranted that they are representative of subsurface conditions at other locations and times. If, at any time, different subsurface conditions from those observed are determined to be present, we must be advised and allowed to review and revise our observations if necessary.

Florida Geology Business Licenced by PG2186

END OF LOG