



DSI* Stoneley Fracture Analysis

Processed Geophysical Logs

COMPANY: ALL WEBB'S ENTERPRISES, INC.

WELL: MF-40

FIELD: C-23 CANAL

State: FLORIDA

COUNTRY:

*Dipole Shear Sonic Imager, mark of Schlumberger

Date Processed: Date Logged: 6-Sep-2005

Job Number: Processed at:

Well Location: 27 12' 21" N

Latitude: Longitude:

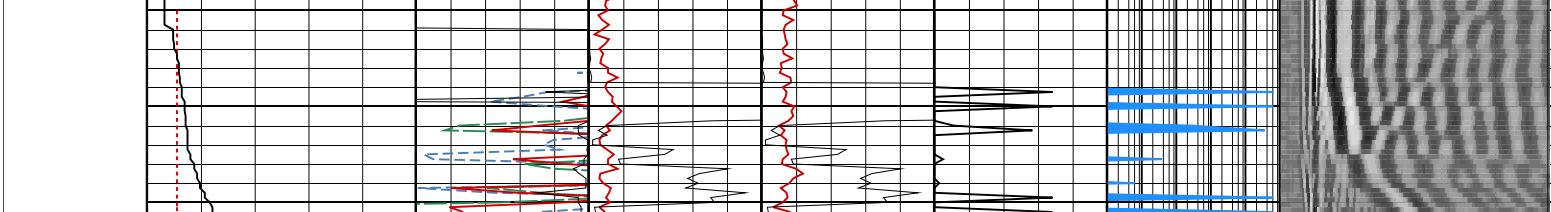
Elevations: KB: DF: GL:

Note: poor reconstruction of the reflection coefficient in upper portion of well

FOLD HERE The well name, location and borehole reference data were furnished by the customer.

All interpretations are opinions based on inferences from electrical or other measurements and we cannot, and do not guarantee the accuracy or correctness of any interpretation, and we shall not, except in the case of gross or willful negligence on our part, be liable or responsible for any loss, costs, damages or expenses incurred or sustained by anyone resulting from any interpretations made by any of our officers, agents or employees. These interpretations are also subject to Clause 4 of our General Terms and Conditions as set out in our current Price Schedule.

		STTC_REC						
		0.75 () 1						
Hole Diameter		STTC_TRA	STRC_DN		STRC_UP		FPERM	
9 (in) 20		0.75 () 1	0 () 0.25		0 () 0.25			
Gamma Ray		STTC_BHC	STRC_DF@		STRC_DF		FWIDTH	
0 (gAPI) 350		0.75 () 1	0 () 0.25		0 () 0.25		0 (in) 0.25	
ST Slowness		STTC_DF	FPERM_DF		SWF1@SWP;3.M			
1400 (us/ft) 140		0.75 () 1	1000 (ms) 1e+08		0 (us) 20440			



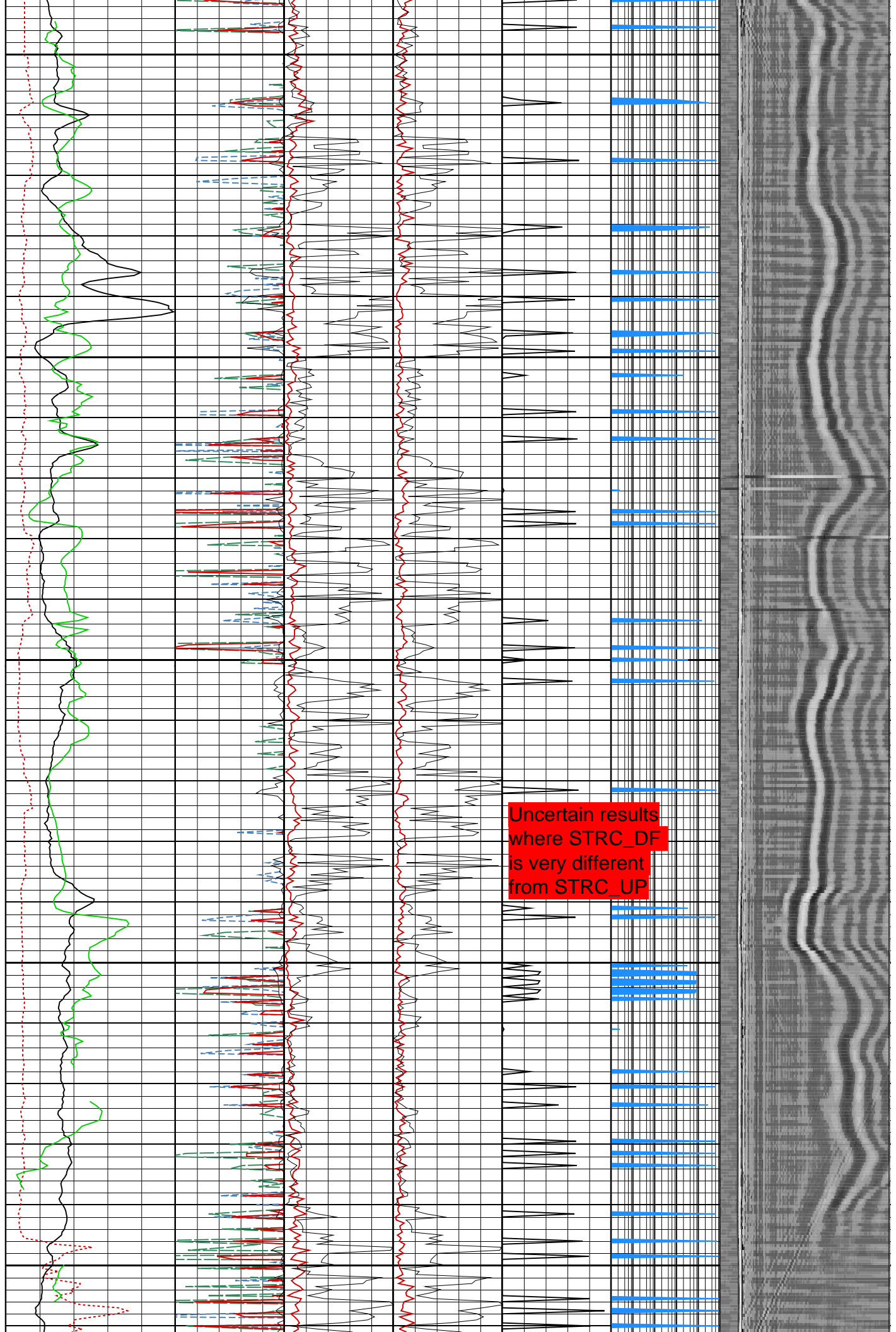
150

200

250

300

350

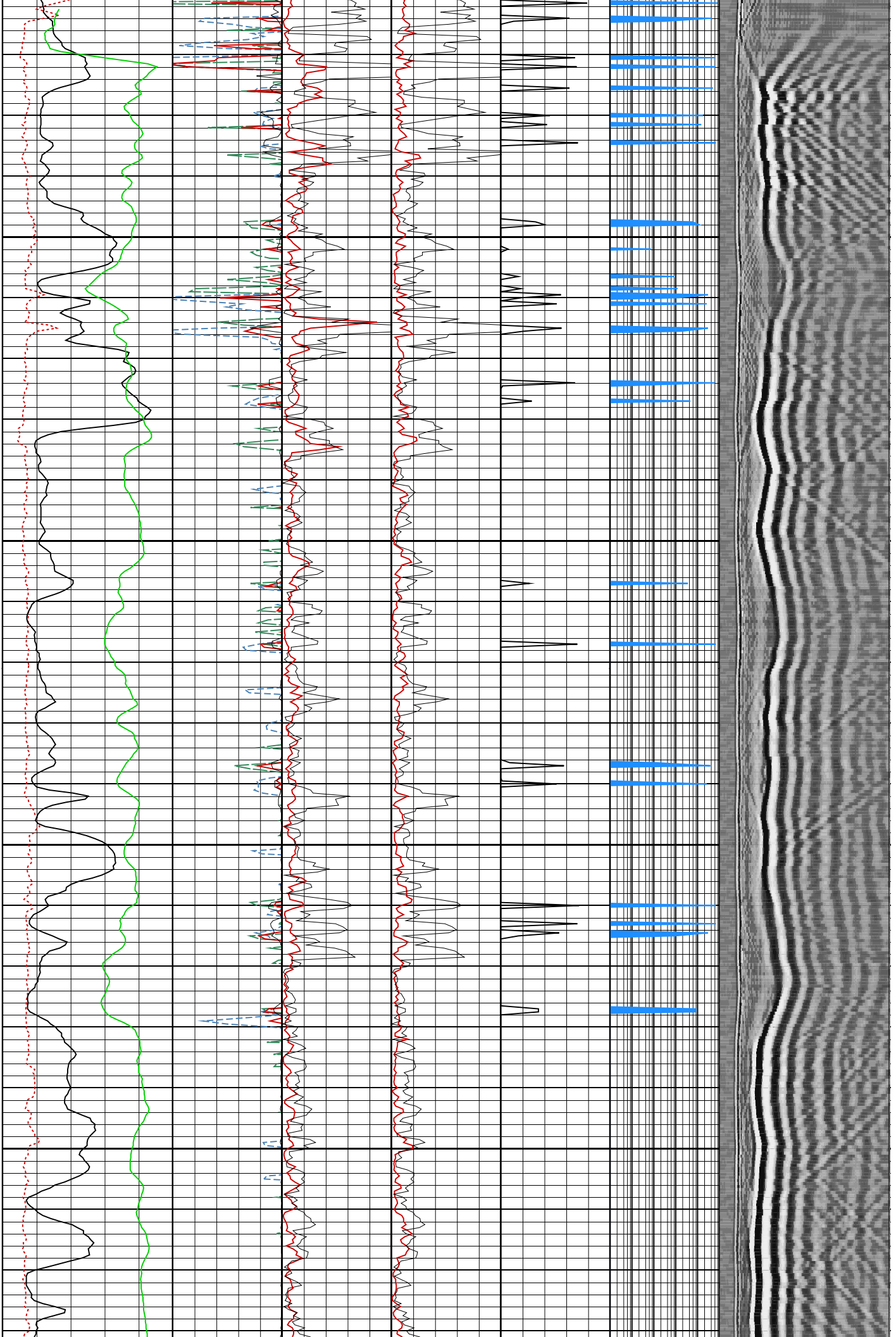


400

450

500

550



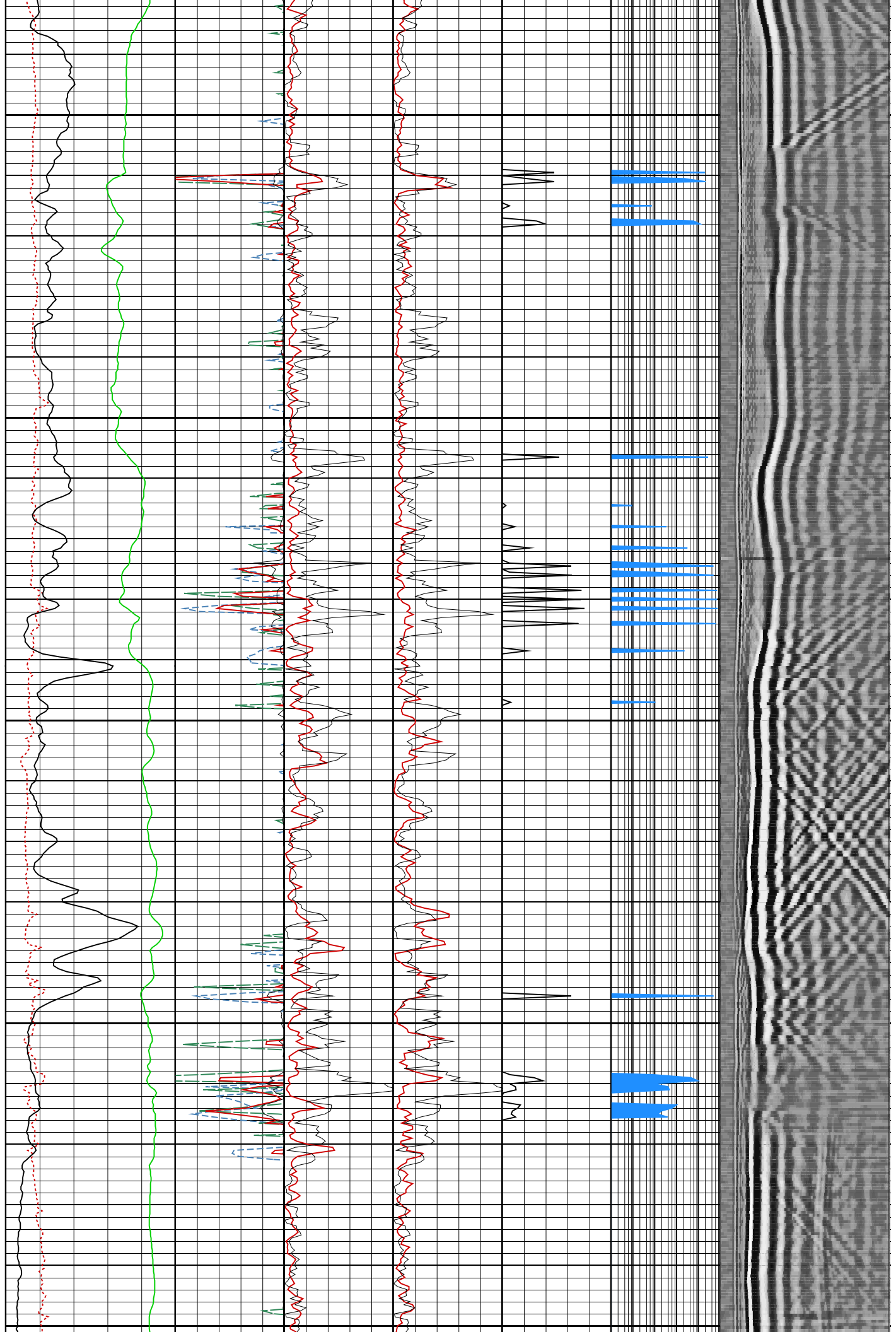
600

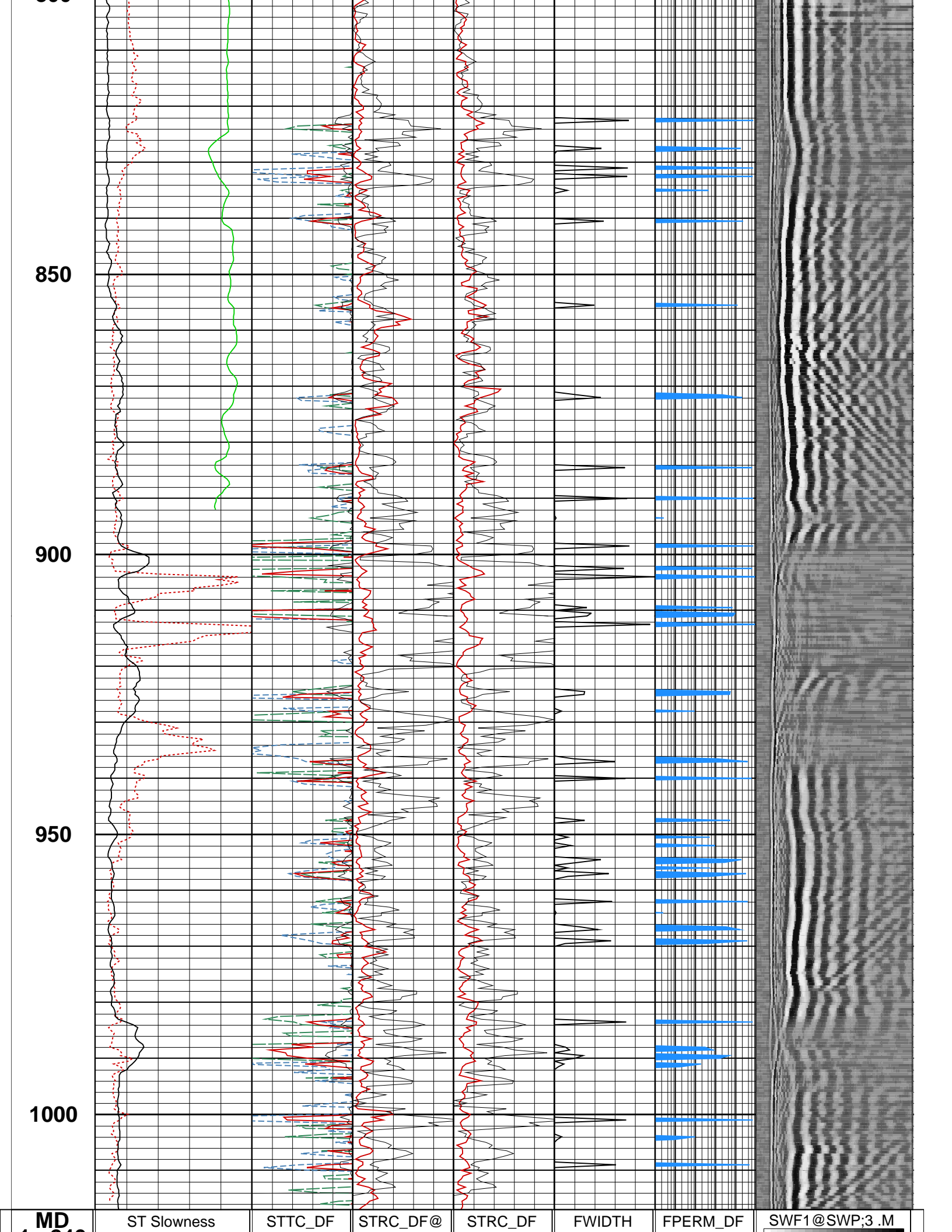
650

700

750

800





MD

ST Slowness

STTC_DF

STRC_DF@

STRC_DF

FWIDTH

FPERM_DF

SWF1@SWP;3.M

1 : 240
ft

1400 (us/ft) 140

0.75 () 1

0 () 0.25

0 () 0.25

0 (in) 0.25

1000.1e+08
(mD)

0 (us) 20440

Gamma Ray

STTC_BHC

STRC_DN

STRC_UP

FPERM

0 (gAPI) 350

0.75 () 1

0 () 0.25

0 () 0.25

Hole Diameter

STTC_TRA

9 (in) 20

0.75 () 1

STTC_REC

0.75 () 1