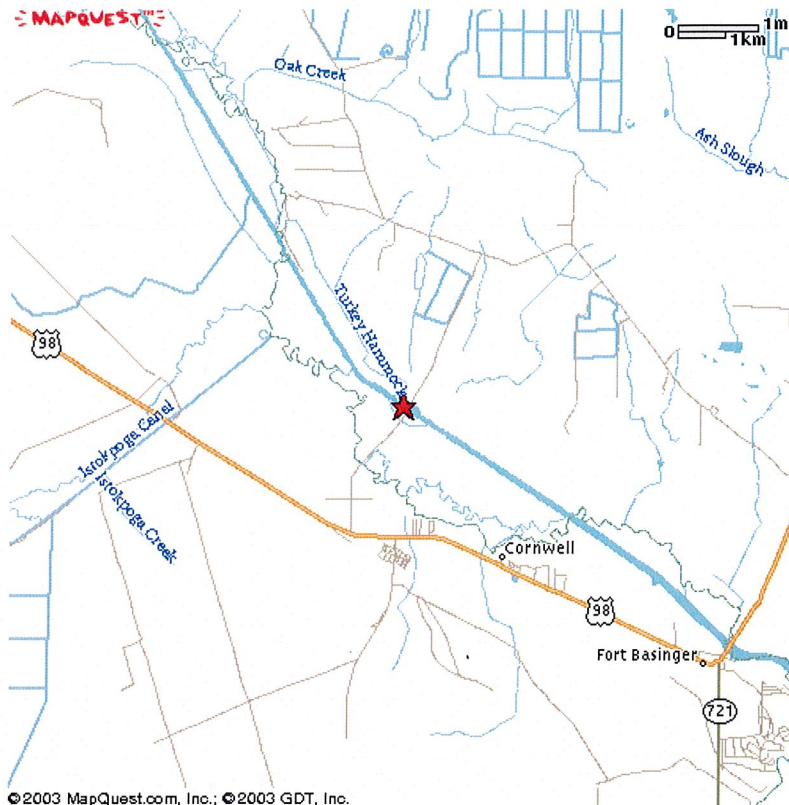


Well: OKF-42
DBHYDRO Name: OKF-0042 and OKF-42
Number of wells at the site: 1
Latitude: 272404.143
Longitude: 810657.226
Artesian/under pressure: Yes
Well Depth: 1,152 feet
Well Diameter: 6-inches
Map and Directions:



Written Driving Directions:

From the intersection of US-98 and State Road 70 west of the City of Okeechobee, travel northwest on US-98 for approximately 21 miles to the intersection of US-98 and Boat Ramp Road. Turn north onto Boat Ramp Road, follow it for approximately 3 miles to the Kissimmee River, and water control structure S-65C. The well is located north of the structure on the western side of the Kissimmee River.

REB

COMMENTS

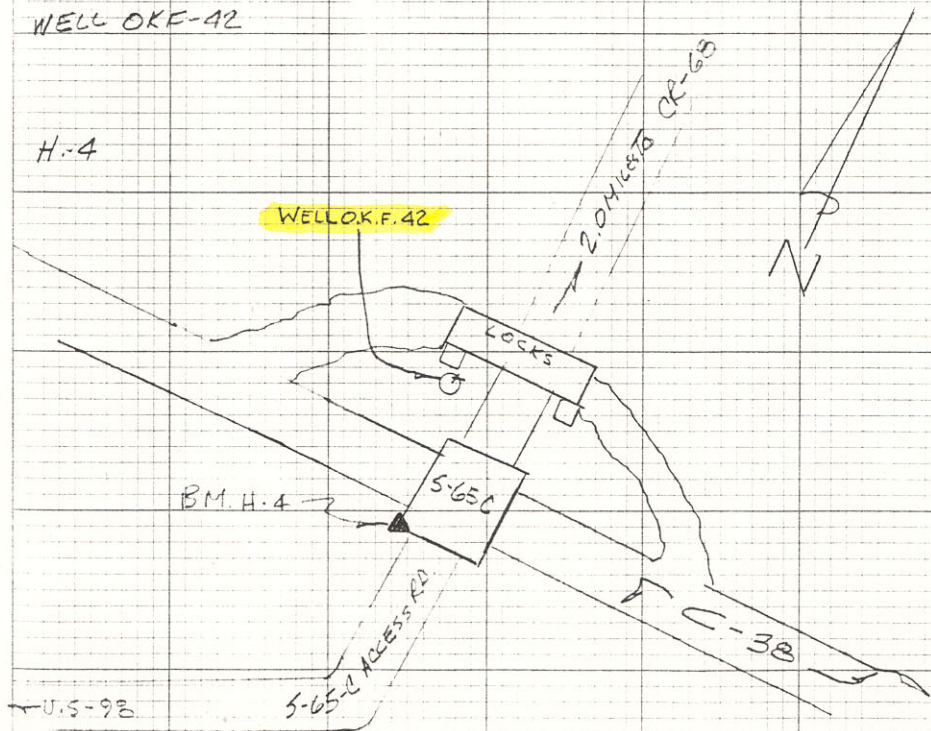
B.M. H-4 S.F.W.M.D. B.M. (F.C.D. BRASS DISK)
 SEE L.B.#4 PG-21

WELL# OKF-42 TOP AND NORTH SIDE OF 5" P.V.C. PIPE WELL. ELEV. PT IS
 A X MARK. WELL IS 16.2' S.E. OF THE S.E. COR OF THE N. END
 OF (UPSTREAM) LOCKTENDER CONTROL BUILDING,

WELL OKF-42

H-4

WELL OKF.42



U.S-98

42