



RMBAKER LLC

WELL ORF-62_GW1
UWI ORF-62_GW1

Geology and Geophysics

8600 Oldbridge Lane
Orlando, FL 32819
mobile ph 407-733-8958

LOG STAGE EXPLORATORY

rob@rmbaker.com
www.rmbaker.com

HEADER NOTES:
WELL SCREEN STARTS AT A DEPTH OF 10.3 FEET.

COMP	RMBAKER LLC		
LOC	ORANGE COUNTY		
FLD	ORANGE COUNTY		
CNTY	ORANGE		
STAT	FL		
PROV	FL		
CTRY	USA		
LATI	28.394698	X	
LONG	-81.161428	Y	
GDAT	WGS84	HDAT	
SEC		ELEV	65
TWP		V DAT	
RGE			

ALL SERVICES:
NATURAL GAMMA
DUAL INDUCTION
VIDEO

PERMANENT DATUM:
LOG MEASURED FROM: GROUND SURFACE

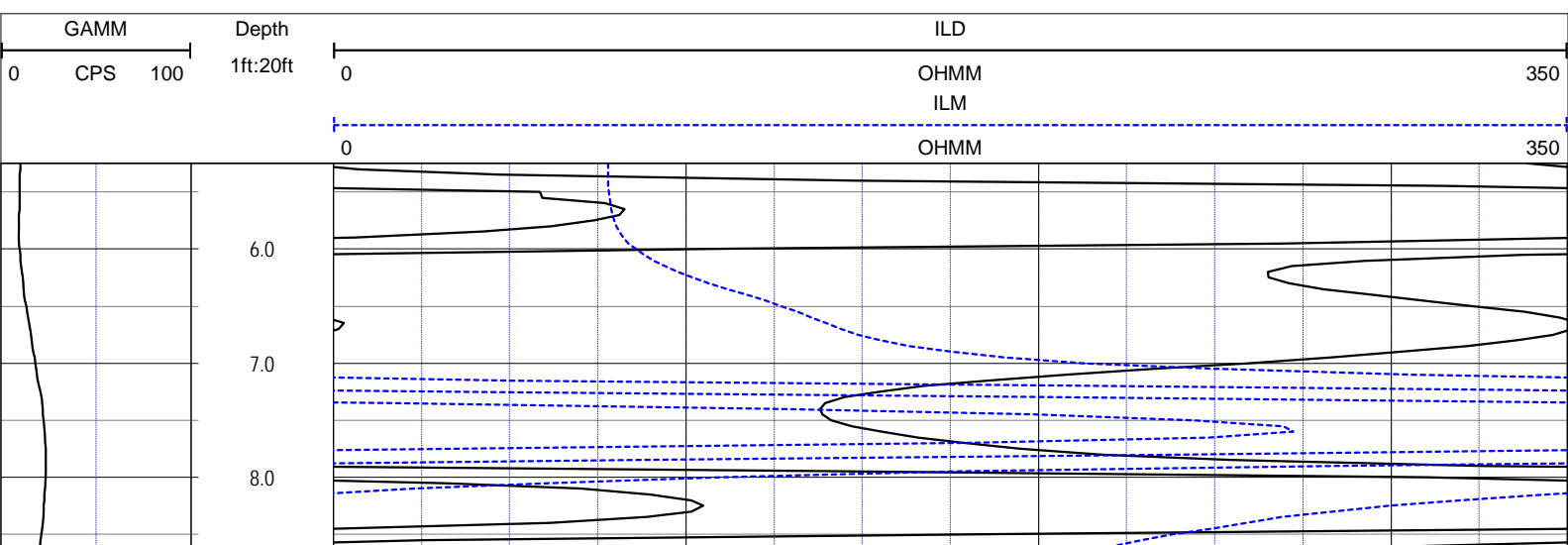
DRILLING MEASURED FROM:

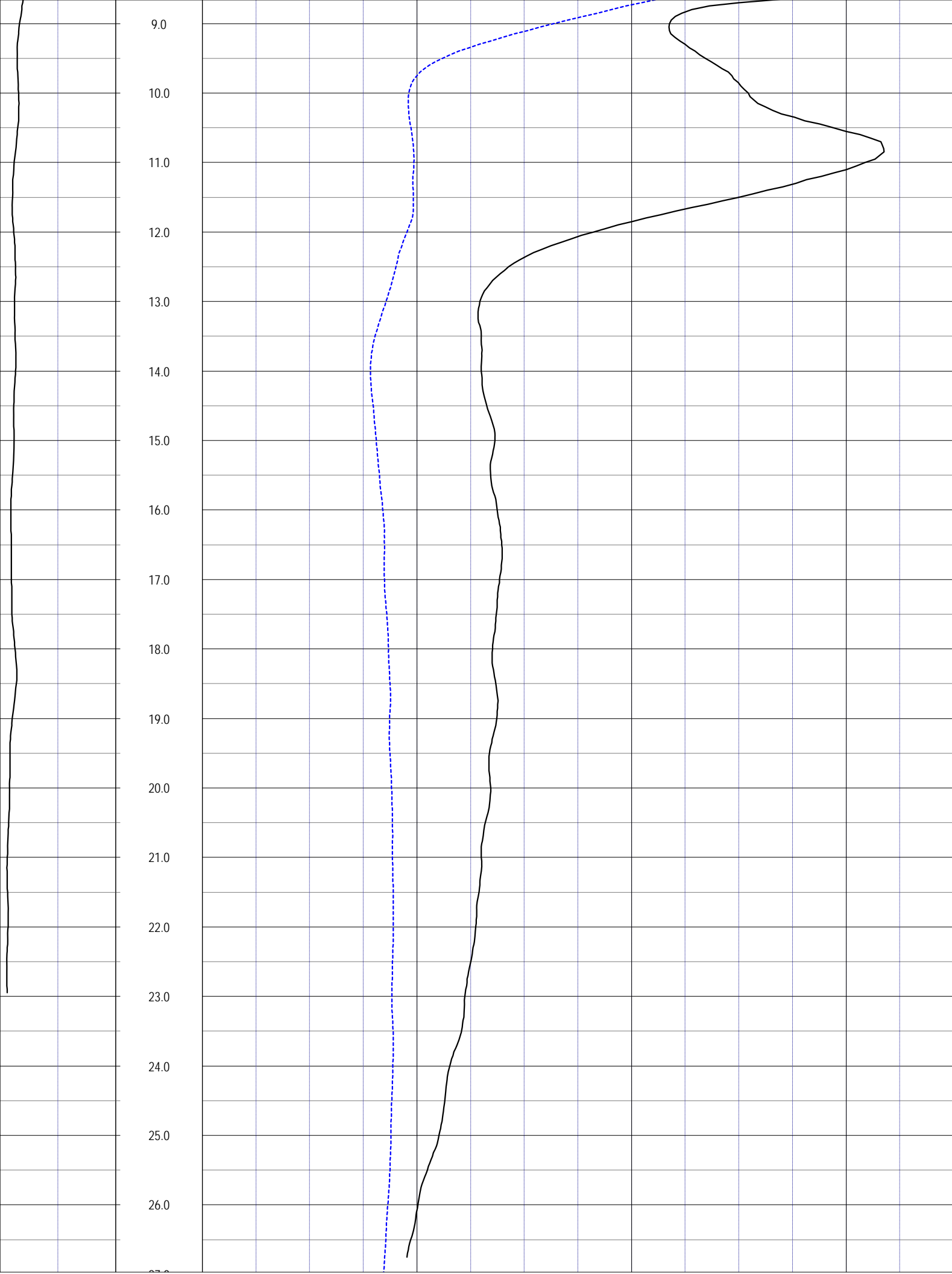
DATE	20 Mar 15	TYPE FLUID IN HOLE	WATER
RUN No	1	LOGGING SPEED (FT/MIN)	30
TYPE LOG	DUAL INDUCTION	TROLLING DIRECTION	UP
DEPTH-DRILLER		PUMPING RATE (GPM)	
DEPTH-LOGGER	30.1		
DRILLER			
RECORDED BY	RMB		
SRVC	RMBAKER LLC	API	N/A
WITNESSED BY		LIC	N/A

BOREHOLE RECORD				CASING RECORD			
RUN NO.	BIT	FROM	TO	SIZE	MAT.	FROM	TO
1				4	PVC	0	30.1

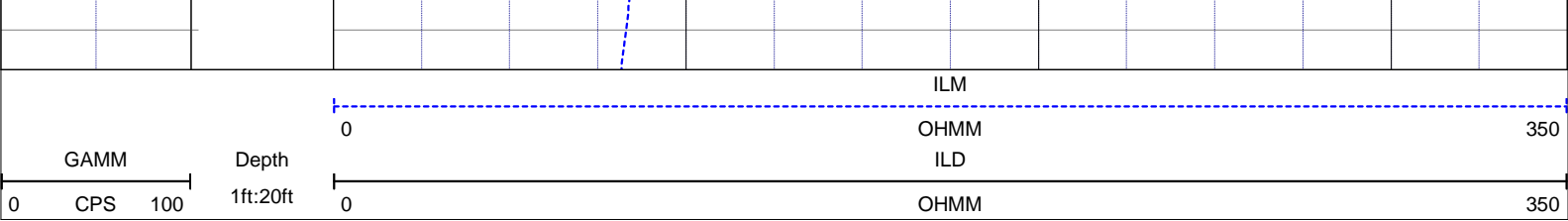
LOG CODES

3-arm caliper	CAL	long normal resistivity	RLN	deep induction conductivity	IDC
natural gamma (CPS)	GAMM	8 inch resistivity	R8	shallow induction conductivity	ISC
spontaneous potential	ESP	32 inch resistivity	R32	sonic interval velocity	DT
single point resistance	RES	deep induction resistivity	ILD	sonic porosity (RHG method)	SPHI
short normal resistivity	RSN	shallow induction resistivity	ILM	repeat designation	R





27.0



NOTES:
 While due care has been exercised in the performance of these measurements and observations, in accordance with methodologies utilized by the general practitioner, RIMBAKER LLC can make no representations, warranties, or guarantees with respect to latent or concealed conditions that may exist, which may be beyond the detection capabilities of the methodologies used, or that may extend beyond the areas and depths surveyed.
 The geophysical well logs show subsurface conditions as they existed at the dates and locations shown, and it is not warranted that they are representative of subsurface conditions at other locations and times.
 If, at any time, different subsurface conditions from those observed are determined to be present, we must be advised and allowed to review and revise our observations if necessary.

Certificate of Authorization GB 458

END OF LOG