



SOUTH FLORIDA WATER MANAGEMENT DISTRICT

Rev. 1/16

SCADA RTU Station Name: DESERET GW3 DESERET GW1 DESERET GW2	DB Hydro Station Name: OSF-110 OSF-111 OSS-111	DB Hydro Site Name: DESERET	Agency: S.F.W.M.D	Date of Field Work: 4/04/2019
Party Chief: EBANKS	Field Book: SCADA FB# 13	Page(s): 26	Prepared by: E. Ebanks	

SITE SPECIFIC DATA

Site Benchmark(s): OSF-110 OSF-111	Benchmark Elevation(s) (NAVD88) 62.59 feet 63.45 feet	Corpscon 6.0.1 Conversion Factor (NAVD88 to NGVD29) +1.07 feet
Reference Elevation(s) (NAVD88): OSF-110 (GW3) = 65.30 feet OSF-111 (GW1) = 66.45 feet OSS-111 (GW2) = 65.80 feet		Calibration Port Elevation(s) (NAVD88): N/A
Ground Elevation (NAVD88) OSF-110 = 62.5', OSF-111 = 62.9'		Pad Elevation (NAVD88) OSF-110= 62.57', OSF-111= 63.42', OSS-111= 63.38'

GEOGRAPHIC DATA

Section 12	Township 25 South	Range 31 East
Well(s) Gate(s) Benchmark(s)	Latitude: OSF-110 28°19'31.0" OSF-111 28°19'31.6" OSS-111 28°19'31.4"	Longitude: OSF-110 -81°10'06.3" OSF-111 -81°10'06.3" OSS-111 -81°10'06.5"
	State Plane Coordinates	Northing (Y) = N/A Easting (X) = N/A

Notes: NAVD88 – North American Vertical Datum of 1988; NGVD29- National Geodetic Vertical Datum of 1929; Corpscon 6.0.1 - A U.S. Army Corps of Engineers Engineering Research and Development Center Topographic Engineering Center Alexandria, Virginia Windows-based program to convert coordinates and elevations between datum's using vertcon05.txt and vertcon05.05 files supplied by the U.S. Army Corps of Engineers South Atlantic Division, Jacksonville Fl.

PICTURES

Aerial of Overall Site
Not to scale (esri product)

Benchmark "OSF-111"
Latitude: **28°19'31.6"**
Longitude: **- 81°10'06.4"**
El. **63.45 feet NAVD88**

Benchmark "OSF-110"
Latitude: **28°19' 31.0"**
Longitude: **- 81°10'06.2"**
El. **62.59 feet NAVD88**

OSS-111 – GW2
Latitude: **28°19'31.4"**
Longitude: **- 81°10'06.5"**

OSF-111 – GW1
Latitude: **28°19'31.6"**
Longitude: **- 81°10'06.3"**

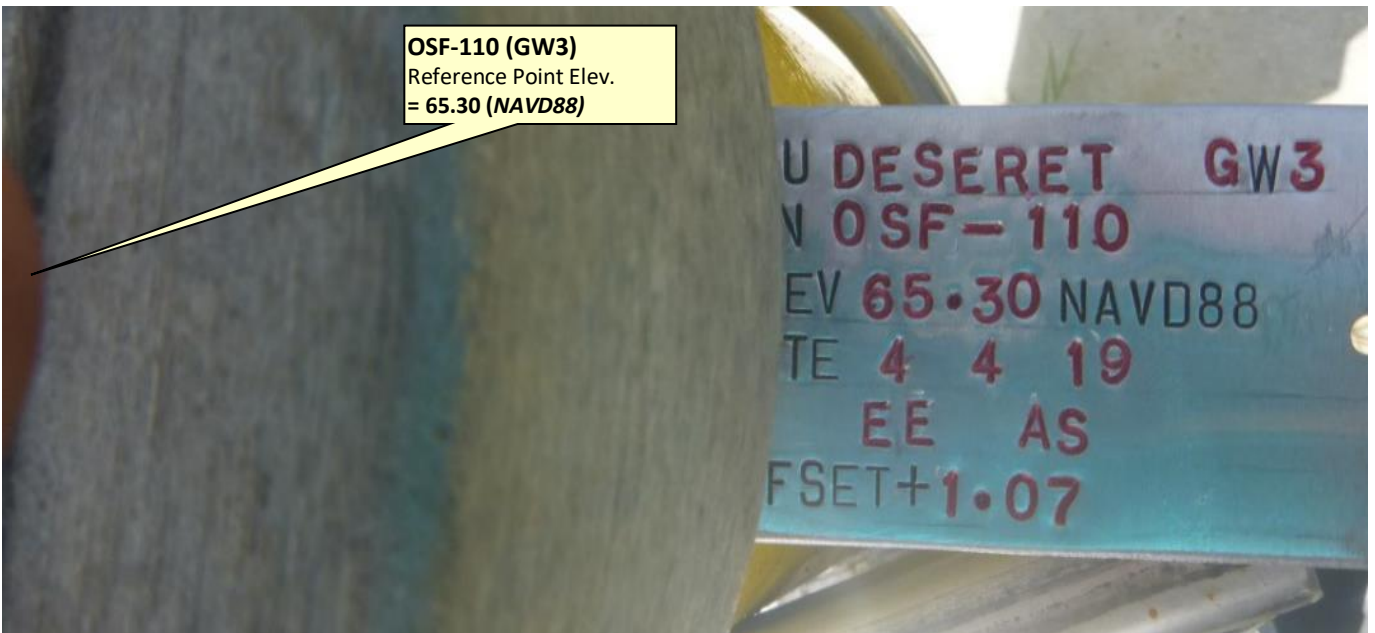
OSF-110 – GW3
Latitude: **28°19'31.0"**
Longitude: **-81°10'06.3"**



SOUTH FLORIDA WATER MANAGEMENT DISTRICT

Rev. 1/16

DESERET Well Site





SOUTH FLORIDA WATER MANAGEMENT DISTRICT

Rev. 1/16

DESERET Wells

OSF-111 (GW1)
Reference Point Elev.
= 66.45 (NAVD88)



OSS-111 (GW2)
Reference Point Elev.
= 65.80 (NAVD88)





SOUTH FLORIDA WATER MANAGEMENT DISTRICT

Rev. 1/16

"OSF-110" Benchmark Location
Benchmark: El.62.59 feet (NAVD88)



Benchmark "OSF-110"
Latitude: 28°19'31.0"
Longitude: - 81°10'06.2"
El. 62.59 feet NAVD88





SOUTH FLORIDA WATER MANAGEMENT DISTRICT

Rev. 1/16



Benchmark "OSF-111"
Latitude: 26°19'31.6"
Longitude: - 81°10'06.4"
El. 63.45 feet NAVD88





SOUTH FLORIDA WATER MANAGEMENT DISTRICT

Rev. 1/16

"OSF-110" Benchmark Datasheet (1 of 1)

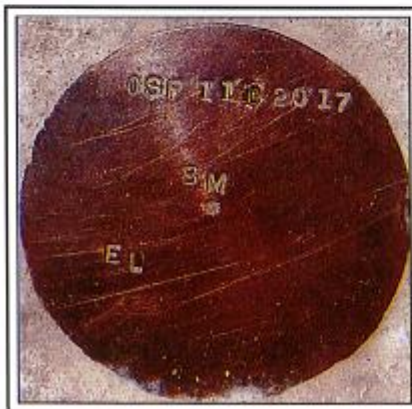


SOUTH FLORIDA WATER MANAGEMENT DISTRICT

Rev. 1/16

DESIGNATION: OSF110		PROJECT: OSF-110 & OSS-111 Well Sites	
ESTABLISHED BY: SOUTH FLORIDA WATER MANAGEMENT DISTRICT		SURVEYOR: Strickland	
RECOVERED BY:		LAST DATE: 07-may-18	
GEOGRAPHIC POSITION			
SECTION 12		TOWNSHIP 25 SOUTH	RANGE 31 EAST
COUNTY: Osceola	NAME OF QUADRANGLE: Narcoossee	GEOGRAPHIC INDEX OF QUAD: 3510	
HORIZONTAL DATUM: 1927 (1983) Other _____ ZONE (E) or W			
VERTICAL DATUM: MSL 1929 (1988) Other _____			
VERTICAL ACCURACY: 1 2 (3)			
STATE PLANE COORDINATE	(N) Y= 1450997	(E) X= 601982	NAVD 88 EL. 62.593 NGVD 29 EL. 63.666 (Corpscon)
CORPSCON 6.0.1 CONVERSION FACTOR (NAVD88 TO NGVD29): +1.073			
LATITUDE: 28°19'30.95"		LONGITUDE: 81°10'06.32"	
RECOVERY DATA			
Stamping: OSF 110 2017 BM EL			
To Reach: From the junction of U.S. Highway 192, 441 (13 th Street) and County Road 523 (Vermont Avenue, Canoe Creek Road) in St. Cloud, go east on U.S. Highway 192, 441 (13 th Street, East Bronson Highway) for 3.0 miles to the intersection of State Road 15; continue east on U.S. Highway 192, 441 (Bronson Highway) for 1.25 miles to the junction of Nova Road (County Road 532) on the left; turn left on Nova Road (County Road 532) and go northeast for 3.65 miles to the west end of South Florida Water Management District's Canal 32C and the junction of Sungrove Lane; turn left onto Sungrove Lane and go north for approximately 100.0 feet to a locked gated; continue north on Sungrove Lane for 4.2 miles to South Florida Water Management District Canal 30; turn right, southeast and go 300 feet to the OSF110 well site and station location. The station is a 3/4-inch brass disk stamped "OSF 110 2017 BM EL" set on the northerly side of the well in the concrete base. The station is located 1.1 foot from the northerly side of the 4 foot by 4-foot base and 0.6 of a foot from the westerly side of the concrete base.			
NGS SOURCE BENCHMARK: W577 (DB6218) El. 62.985 NAVD88 and X577 (D6219) El. 62.317 NAVD88. Note: NGS OS96 (DB6224) published elevation 61.55 NAVD88 not used. A closed level line between W577 and X 577 established a new elevation of 61.503 NAVD88.			
FIELD BOOK: MISC 7E PAGES 1 thru 3			

PICTURES



3/4" Brass disk stamped
"OSF 110 2017 EL"
El. 62.593 NAVD88



Looking Northerly (Not to scale)



SOUTH FLORIDA WATER MANAGEMENT DISTRICT

Rev. 1/16

"DESERET" Field Notes (1 of 1)

SCADA PG #13 4-4-19 26

SEC 12 TWP 25 R 6 E 31 EBANKS
SCHAUER

ESTABLISH REF ELEV. ① OSF1109 OSF1110 AND
OSS-111 Wall Site (DESERET)

STA	+/-	H/E		ELEV	REMARKS
B.M. OSF110 ✓	5.92	68.51		62.59 ✓	(NAVD83)
OSF110 WALL			3.21	65.30	OSF110
CONC PAD SW			5.95	62.56	
CONC PAD NW			5.91	62.60	62.59
CONC PAD NE			5.95	62.56	
CONC PAD SE			5.95	62.56	
GROUND N+20			5.94	62.57	THIS STAKE (outside fence)
GROUND W+20			4.79	62.22	
GROUND S+20			5.99	62.52	62.5
GROUND E+20			5.89	62.62	
B.M. OSF111			5.06	63.45	SFLOWD BRASS DISK
OSF111 WALL			2.00	66.45	OSF111
CONC PAD SE			5.08	63.43	
CONC PAD SW			5.07	63.44	
CONC PAD NW			5.09	63.42	63.42
CONC PAD NE			5.10	63.41	
GROUND N+20			5.10	63.41	
GROUND W+20			5.43	63.08	(GND SHOD OUTSIDE PER 116)
GROUND S+20			4.15	62.36	62.4
GROUND E+20			5.82	62.69	62.7
OSS111			2.71	65.80	OSF111
CONC PAD NW			5.09	63.42	
CONC PAD NE			5.09	63.42	
CONC PAD SE			5.16	63.35	63.35
CONC PAD SW			5.18	63.33	
B.M. OSF111	4.97	68.42			
OSS111			2.62	65.80 ✓	
OSF111			1.92	66.45	
OSF110			3.12	65.30	
B.M. OSF110			5.83	62.59 ✓	