

LEVELS TO WELLS ON THE NATURE CONSERVANCY PROPERTY  
(DISNEY WILDERNESS PRESERVE (OLD WALKER RANCH)) IN FOLK COUNTY  
IN SEC 15 TWP. 28S RGE. 29E. REQUESTED BY  
KEVIN ROHRER

STA	+	HI	-	ELEV.	B.M. ELEV.
B.M.					67.28 ✓
	4.62 2.66	71.90			
B.M.			6.22 1.06	65.68	65.68
		RETURN LEVELS			
B.M.				65.68	65.68
	6.17 1.11	71.85			
B.M.			4.57 2.71	67.28	67.28 ✓
		LEVELS TO WELLS			
B.M.					65.68 ✓
	5.10 2.18	70.78			
#1			0.56 6.72	70.22	

CONT'D. ON Pg. - 28

NOTE ~~W~~ G.P.S. FILE OSCWELLS  
AND G.P.S. LOCATION @ F.P.W. 1

## COMMENTS

B.M. S.F.W.M.D. POT-285-14 1983 RECOVERED AS DECAYED FROM  
LANTIS. IN EXCELLENT CONDITION. PUT NEW SIGN ON CORNER.  
POST 2.0' N.

B.M. D.P.-1 2002 B.M. S.F.W.M.D. ALUM. DISK SET IN  
1 1/4" X 1 1/8" IRON PIPE SET 2.0' N. OF A 10" STEEL WELL #  
8, FPW1

B.M. S.F.W.M.D. POT-28514 1983 AS ABOVE

NOTE ALL ELEV. ON WELLS ARE "X" CUTS IN PIPES  
ON NORTH SIDE, PAINTED HOT PINK. WELL #S  
ARE FROM SKETCH FROM KEVIN ROHRER

B.M. DP-1 2002 B.M. AS ABOVE

#1 H.M. 1 2" P.V.C. WELL IS 4.3' ABOVE  
THE LEVEL OF THE GROUND.

CONT'D. FROM Pg. -27

STA	+	HI 70.72	-	ELEV.	B.M. ELEV.
#2			1.25 6.02	69.53	
#3			1.34 5.94	69.44	
#4			2.03 5.25	68.75	
#5			2.01 5.27	68.71	
#6			3.49 3.79	67.29	
1					
#7			3.90 3.38	66.88	

CONT'D. ON Pg. -29

## COMMENTS

#2 SMW2 2" P.V.C. WELL IS 3.5' ABOVE THE LEVEL OF THE GRND.

#3 SMW1 2" P.V.C. WELL IS 3.4' ABOVE THE LEVEL OF THE GRND

#4 FMW1 4" ~~P.V.C.~~ STEEL PIPE, WELL IS 2.8' ABOVE THE LEVEL OF THE GRND

#5 SPW1 8" P.V.C. PIPE WELL IS 2.6' ABOVE THE LEVEL OF THE GRND

#6 HPW1 8" P.V.C. PIPE WELL IS 1.2' ABOVE THE LEVEL OF THE GRND

#7 SMW3 IS 2" P.V.C. PIPE ~~WELL~~. WELL IS 0.71' ABOVE THE LEVEL OF THE GROUND.

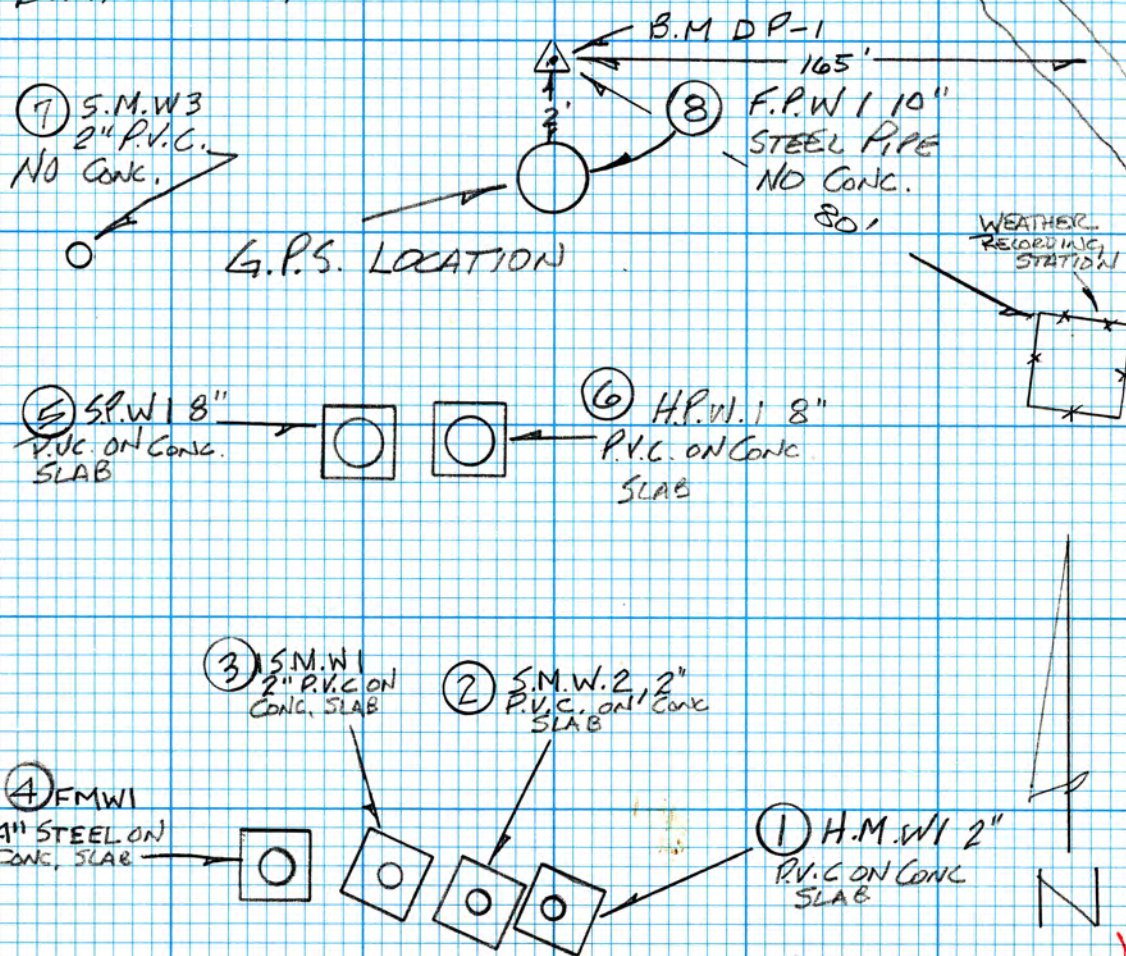
#8	2.27 5.01	68.51	
B.M.	5.10 2.18	65.68	65.68 ✓

Ⓜ T Hollin  
 & RIMES

#8 F.P.W. 10" STEEL.  
 WELL IS 2.7' ABOVE THE  
 LEVEL OF THE GRND.

15 28/29

B.M. D.P.-1 2002 Pg-27



N  
 [Handwritten signature]

SOUTH FLORIDA WATER MANAGEMENT DISTRICT



Survey Data Entry and Retrieval Application (SDERA) Print Output

**Control Point Search Results**

Derived Data - Denoted By: \*\*

Designation	DPI	Record State	ACCEPTED
NGS PID			
Project Name	FP-01 WELL SITE	Date Entered/Updated	11/21/2015
Updated By	hehmke	Status	
Party Chief	HOLLIN JR, ARTHUR	Type	V
Monument Set By	SOUTH FLORIDA WATER MANAGEMENT DISTRICT	Date Established	01/01/2002
County	OSCEOLA COUNTY	Section	15
Township	28	Range	29
Quadrangle		Offset (29 to 88)	
NGS Source BM		CCR Link	
Ctrl Pt Source(s)			

<u>Horizontal</u>	<u>NAD 1927</u>	<u>NAD 1983</u>	<u>Vertical</u>	<u>NGVD 1929</u>	<u>NAVD 1988</u>
Latitude		28 02 55.79	Class		
Longitude		81 24 00.55	Order	3	
Northing(Y)			Elevation	65.68	
Easting(X)			Measurement Unit	Feet	
Class					
Order					
NAD83 Adj Year					

**Field Book**  
OSCEOLA CO WELLS 17

**Field Book Pages**  
27&29

**Stamping**  
D.P.-1 2002

**How to Reach**  
From the intersection of Pleasant Hill Road, Poinciana Blvd. and Southport Road go Southeast along Pleasant Hill Road, 2.7 miles to the entrance of Walker Ranch; go South along Walker Ranch dirt road 7.1 miles to POT28S14 1983; continue Southeasterly along Walker Ranch dirt road to the bunk house approximately 0.1 of a mile to the WRWX well site location on the right and station location.  
Station is located 165' West of the bunk house road; 80 feet Northwest of the weather recording station and 2' North of FPW1 a 10-inch steel pipe (no concrete)  
Benchmark D.P.-1 2002 BM is a South Florida Water Management District aluminum disk set in a 1-1/4-inch x 18-inch iron pipe.

**Description**  
A South Florida Water Management District aluminum disk set in a 1-1/4-inch x 18-inch iron pipe set.

**DISCLAIMER:**  
The South Florida Water Management District (hereinafter referred to as the DISTRICT ) shall not be held liable for improper or incorrect use of the data, information, apparatus, products, processes or materials described and/or contained herein. These data, information, apparatus,

products, processes, materials and related graphics are not legal documents and are not intended to be used as such. The user hereby recognizes that the information, data, apparatus, products, processes and materials are dynamic and may change over time without notice. However, the DISTRICT makes no commitment to update the information, data, apparatus, products, processes or materials contained herein.

SOUTH FLORIDA WATER MANAGEMENT DISTRICT



Survey Data Entry and Retrieval Application (SDERA) Print Output

**Control Point Search Results**

Derived Data - Denoted By: \*\*

Designation	POT28S14	Record State	ACCEPTED
NGS PID			
Project Name	WRWX WELL SITE	Date Entered/Updated	11/21/2015
Updated By	hehmke	Status	GOOD
Party Chief		Type	V
Monument Set By	SOUTH FLORIDA WATER MANAGEMENT DISTRICT	Date Established	01/01/1983
County	OSCEOLA COUNTY	Section	14
Township	28	Range	29
Quadrangle	LAKE HATCHINEHA	Offset (29 to 88)	
NGS Source BM		CCR Link	
Ctrl Pt Source(s)			

<u>Horizontal</u>	<u>NAD 1927</u>	<u>NAD 1983</u>	<u>Vertical</u>	<u>NGVD 1929</u>	<u>NAVD 1988</u>
Latitude		28 02 58.93	Class		
Longitude		81 23 52.1	Order	3	
Northing(Y)			Elevation	67.279	
Easting(X)			Measurement Unit	Feet	
Class					
Order					
NAD83 Adj Year					

**Field Book**  
OSCW17

**Field Book Pages**  
27

**Stamping**  
BM PO-T28-S14 1983

**How to Reach**  
\*\*\* Recovery Note \*\*\*

2/19/2002 Art Hollin field book, Osceola County Wells 17, page 27 BM SFWMD POT28S-14 1983 recovered as described from LAMIS Database in excellent condition put new sign on corner post 2.0 feet North, El. 67.28 NGVD 1929.

\*\*\*\*\*

From the intersection of Pleasant Hill Road, Poinciana Blvd. and Southport Road go Southeast along Pleasant Hill Road, 2.7 miles to the entrance of Walker Ranch; go South along Walker Ranch dirt road 7.1 miles to station location.

Station is located at the P.I. of a fence running in a Northwest direction and a fence running in a Southeast direction. Station is located 24.2 feet North of the centerline of the dirt road & 1.5 feet South of metal witness post. Station is West of the Southeast end of an airplane landing strip. Station is N.44° W. and 73.3 feet from intersection of Walker Ranch Road and a dirt road leading to a ranch house.

**Description**

**DISCLAIMER:**

The South Florida Water Management District (hereinafter referred to as the DISTRICT ) shall not be held liable for improper or incorrect use of the data, information, apparatus, products, processes or materials described and/or contained herein. These data, information, apparatus, products, processes, materials and related graphics are not legal documents and are not intended to be used as such. The user hereby recognizes that the information, data, apparatus, products, processes and materials are dynamic and may change over time without notice. However, the DISTRICT makes no commitment to update the information, data, apparatus, products, processes or materials contained herein.

WRWX06.33.GW1





WRWX06.33.GW2



WRWX06.33.GW3



WRWX06.33.GW4





2008.02.25 11:41



2008.02.25 11:44

Handwritten markings, possibly a stylized signature or code, consisting of several thick, dark, curved lines.



FMW-1 GWH

2008.02.25 11:45

FMW1

ELEV. 69.43

DATE 5-9-07

BY K A M D S

NGVD 29

2008.02.25 11:46



2008.02.25 11:49





三.一 ↑

SMW 1

2008.02.25 11:49

SMW 1  
ELEV. 69.65  
DATE 5-9-07  
BY K AND S  
NGVD 29

2008.02.25 11:49



2008.02.25 11:52

SMW2  
ELEV. 69.70  
DATE 5-9-07  
BY K AND S  
NGVD 29

2008.02.25 11:52



2008.02.25 12:10

HMV 1

70.06

5-9-07

K AND S

NGVD 23

2008.02.25 12:10



2008.02.25 12:11