



SOUTH FLORIDA WATER MANAGEMENT DISTRICT

Rev. 1/16

Site Name: CRS06S		Date of Field Work: 12-jun-13	
Party Chief: Hudson	Field Book: MISC 6P	Page 70	
Site Benchmark: SITE 6	Benchmark Elevation (NAVD88) 19.588	Corpscon 6.0.1 Conversion Factor (NAVD88 to NGVD29) +1.319	
Reference Elevation(s) (NAVD88): 24.11 25.30 (tagged in NGVD29)	Existing Tag Elevation (Datum): NONE 25.40 REF SOP 2/18/09 (written at the site)	Calibration Port Elevation(s) (NAVD88): Not Required	
Ground Elevation (NAVD88): Not taken		Pad Elevation (NAVD88): Not required	
Latitude: 26° 44' 03.19"		Longitude: 81° 15' 53.88" (taken from esri product)	
<p>Notes: Well tagged in NGVD29 NAVD88 – North American Vertical Datum of 1988 NGVD29- National Geodetic Vertical Datum of 1929 Corpscon 6.0.1 - A U.S. Army Corps of Engineers Engineering Research and Development Center Topographic Engineering Center Alexandria, Virginia Windows-based program to convert coordinates and elevations between datum's using vertcon05.txt and vertcon05.05 files supplied by the U.S. Army Corps of Engineers South Atlantic Division, Jacksonville Fl.</p>			

PICTURES

Overall Site



Looking Southwesterly Not to scale (photo taken 22-apr-13 by SCADA)



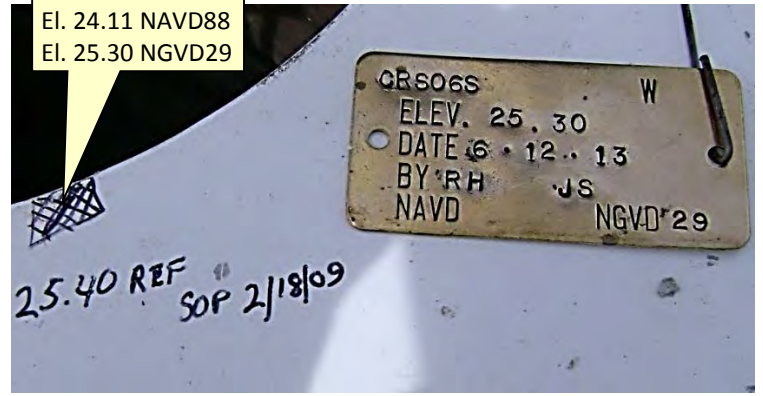
SOUTH FLORIDA WATER MANAGEMENT DISTRICT

Rev. 1/16

Brass Tag Close Up
(Not to scale)



Brass Tag and Reference Mark
(Not to scale)



SCADA Wells Contd
Section 19 Township 43 South, Range 31 East
"CRS06S"

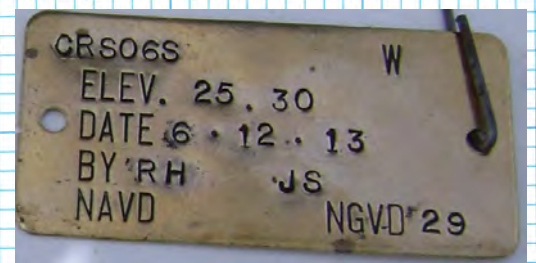
SFA	+	HI	-	ELEV	BM
	9.36				20.78
	3.90	30.14			[29]
Well			4.84	25.30	25.30
			2.42		
RETURN LEVELS					
	4.97	30.27			
	2.29				
			9.49	20.78	20.78
			3.77		
----- END CRS06S -----					
					16.39
					16.63
					[29]
	5.21	21.60			
	2.05	21.84			
CRS03N			1.48	20.12	
			5.78	20.36	
CRS03F			4.29	17.31	
			2.97	17.55	
Bm			5.21	16.39	16.39
			2.05	16.63	16.63

19.588 NAVD88
20.878 NGVD29 (NGS)
20.907 NGVD29 (Corpscon)
20.775 NGVD29 (SFWM D)

T M HUDSON
P STRICKLAND

Comments
BM "SITE 6" RECOVERED IN GOOD COND PER DESC.

MARK ON RECOVERED PLATFORM @ WEST SIDE OF THE VERTICAL PIPE INTO CANAL. OLD EL = 25.40' A DIFF OF - 0.10'



Bm ABOVE

* REVISIONS IN RED ARE BASED ON A NEW ELEV ON BM ESTABLISHED 6/19/13 ON Pg. 74 THIS FB R. HUDSON
Bm SITE 3 RECOVERED IN POOR COND PER DESC. PICKETT & ASSOC. UP-DATED THE ELEV ON THIS MARK IN 2003. THEIR 16.63' NAVD 29 ELEV IS WHAT WE HAND TO. NOTE: MARK HAS BEEN DISTURBED, THE CAP IS SLUFFED & LEANING SLIGHTLY NE. SOME OF THE CONCL. COLLAR IS BROKEN.

"CRS03N"
REF MARK ON E. TOP OF 2" PCL WELL ENCASED IN A 12" PCL PIPE. OLD REF ELEV READS 20.14' A DIFF OF ~~+0.22'~~ - 0.02'

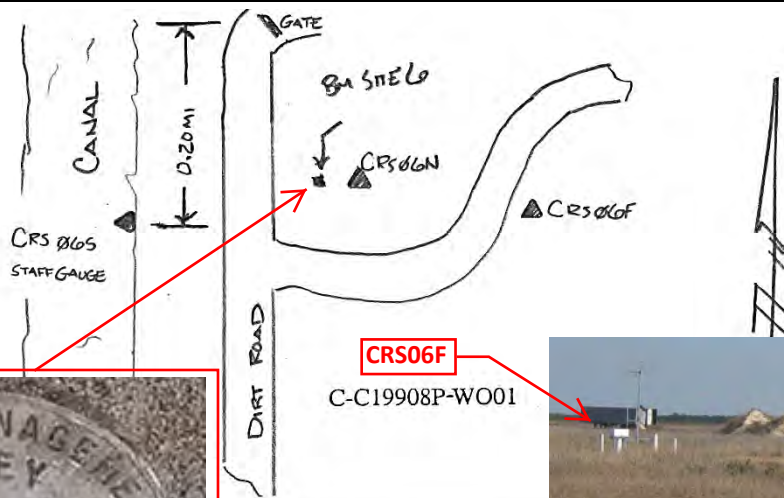
"CRS03F"
REF MARK ON W. TOP OF 2" PCL AS ABOVE. OLD EL = 17.32' A DIFF OF ~~+0.23'~~ - 0.01'

Bm ABOVE

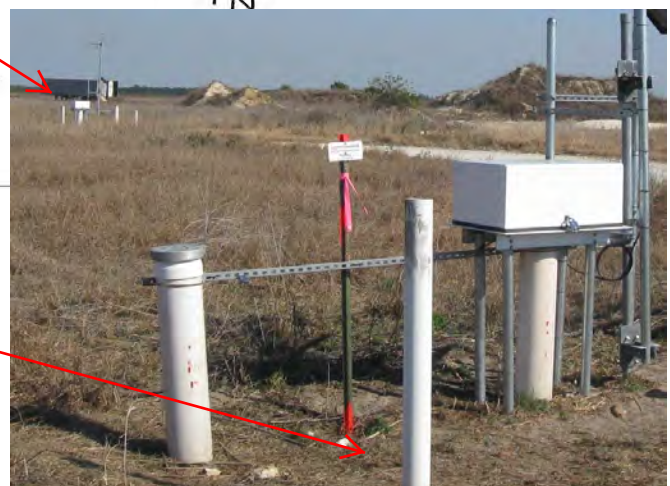


COUNTY: Hendry	PROJECT: Well Sites	DESIGNATION: SITE6	
SECTION 19	TOWNSHIP 43 SOUTH	RANGE 31 EAST	
GEOGRAPHIC INDEX OF QUAD: Florida			
Established by ___ Recovered by <u>X</u> Pickett & Associates, Inc.		NAME OF QUADRANGLE: Felda NE	
SURVEYOR: Kyle Royer DATE: 2/19/2003		FIELD BOOK: 561-22 PAGE: 24-27, 66-90	
HORIZONTAL DATUM: NAD 83/99 ZONE: EAST			
VERTICAL DATUM: NAVD 1988, NGVD 1929 (NGS superseded control), & NGVD 1929 (SFWMD previously published elevation)			
CONTROL ACCURACY: HORIZONTAL N/A		VERTICAL 1 2 (3)	
STATE PLANE COORDINATES Feet	X 569797	Y 872699	EL. = 19.588' (NAVD 88) EL. = 20.878' (NGS NGVD 29) EL. = 20.775' (SFWMD NGVD 29)
LATITUDE: 26°44'03.7" N		LONGITUDE: 81°15'52.7" W	
DESCRIPTION			
To Reach: The Station from the Courthouse in Labelle, go East on S.R. 80 for (11.0 Miles) to Lexington Parkway. Turn right and go South on Lexington Parkway for (2.25 Miles) to the end of pavement and A dirt road on right. Turn right on dirt road and go West for (0.30 Miles) to gate. At gate turn left and go South for (0.2 Miles) to the station on the left.			
Station References: CRS06S is 100'+/- West at East edge of canal			
CRS06F is 150'+/- East			
"BM SITE 6" is 10.00'+/- West of metal witness post			

SKETCH



CRS06F
C-C19908P-WO01



Office

Project

17 April 2017

INPUT

State Plane, flhpgn - Florida HPGN
0901 - Florida East, U.S. Feet
Vertical - NAVD88, U.S. Feet

OUTPUT

Geographic, flhpgn - Florida HPGN
Vertical - NGVD29 (Custom), U.S. Feet

CRS06S

1/1

Northing/Y: 872699

Easting/X: 569797

Elevation/Z: 0

Convergence: -0 07 08.56064

Scale Factor: 0.999949729

Combined Factor: 0.999953564

Latitude: 26 44 03.67485

Longitude: 81 15 52.65935

Elevation/Z: 1.319

Remark:

Corpscon v6.0.1, U.S. Army Corps of Engineers

DBHYDRO | by station

STATION INFORMATION

Station	CRS06S_H
Site	CRS06S
Type	
Latitude (ddmmss.sss)	264403.703
Longitude (ddmmss.sss)	811552.664
X Coord (ft) NAD83	569796.585
Y Coord (ft) NAD83	872701.843
County	Hendry
Basin	EAST CALOOSAHATCHEE
Section	19
Township	43
Range	31
Show Map	Google Map
Description	CALOOSAHATCHEE SEEPAGE PROJECT - SITE 6 - CHANNEL STAGE (HEADWATER)
Notes	
Nearby Stations	Nearby Stations
Attachments	None Available

Query returned 1 station record(s).

[Get Time Series Data](#)