

Report: Palm Beach County, Eastern Hillsboro Basin, ASR-1

Packet	Name/Description	Date	Depths	
			Bottom	Top
1	XYCaliper, Gamma Ray	10/04/2001	0245	0000

Company: Integrity Well & Pump Company
 Well: ASR-1
 Field: Eastern Hillsboro Basin
 County: Palm Beach
 State/Prv: Florida

Location: Palm Beach County Water Utilities Department
 Plant No. 9 ASR Well System Project
 Hillsboro Canal

Permanent Datum: Pad Level
 Log Measured From: Pad Level
 Drilling Measured From: Pad Level

Date: 4 OCT 2001
 Run Number: 01E
 Depth: 249
 Depth Logger: 249
 Tool: 249
 Tool ID: 249
 Tool Type: SURFACE
 Open Hole Size: 12.25"
 Type Fluid: MUD
 Density / Viscosity: n/a
 Max. Recorded Temp: n/a

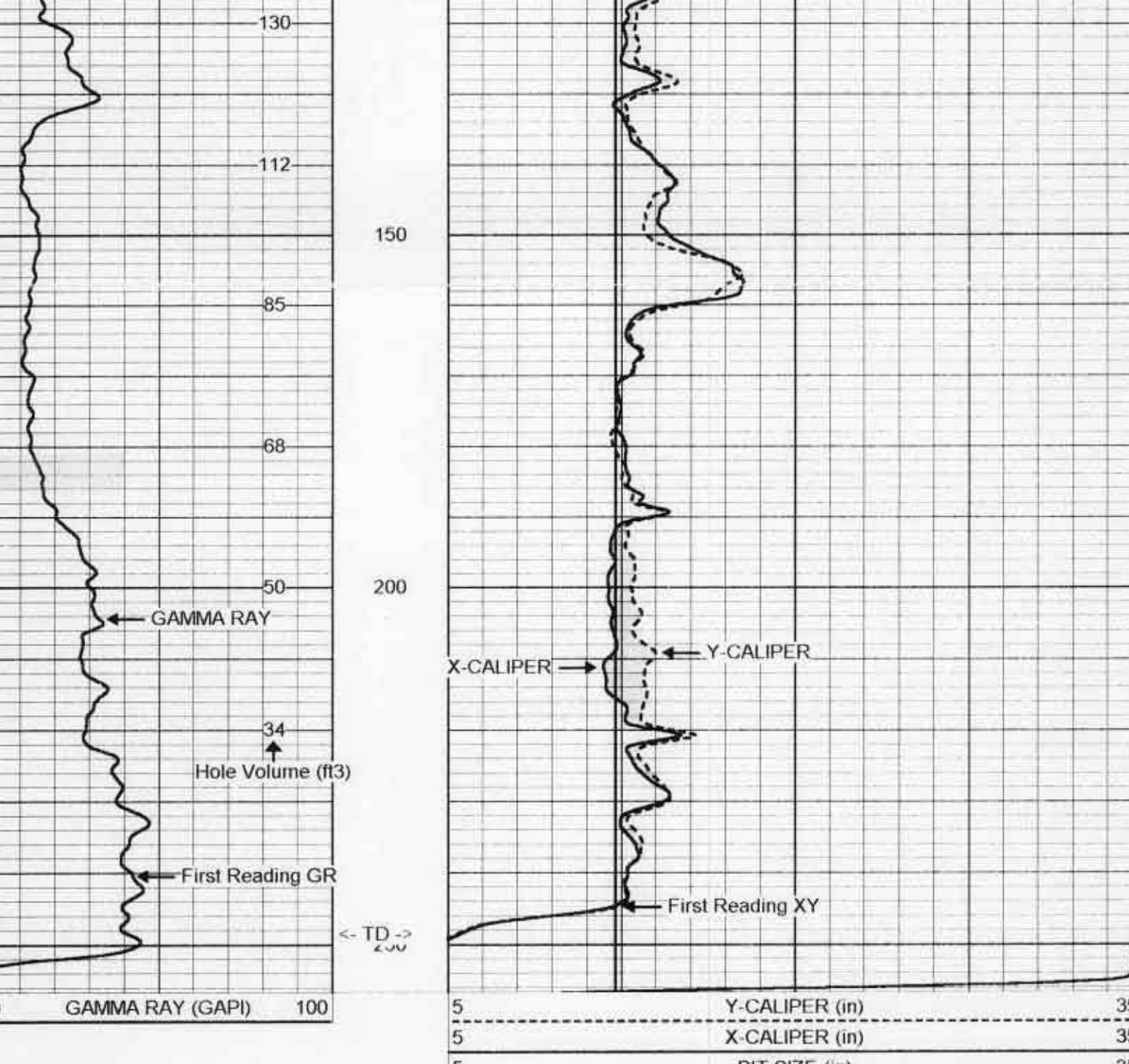
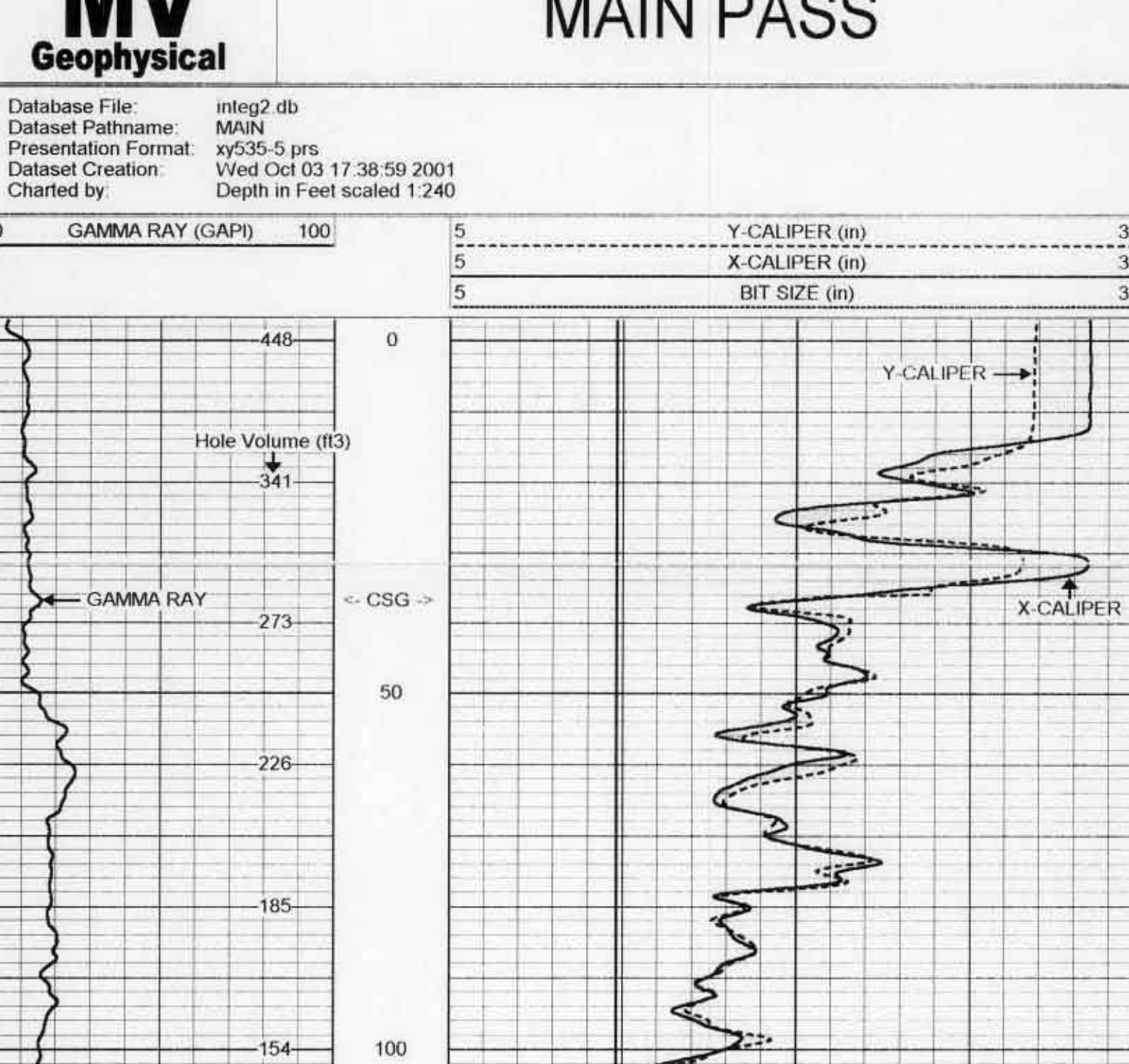
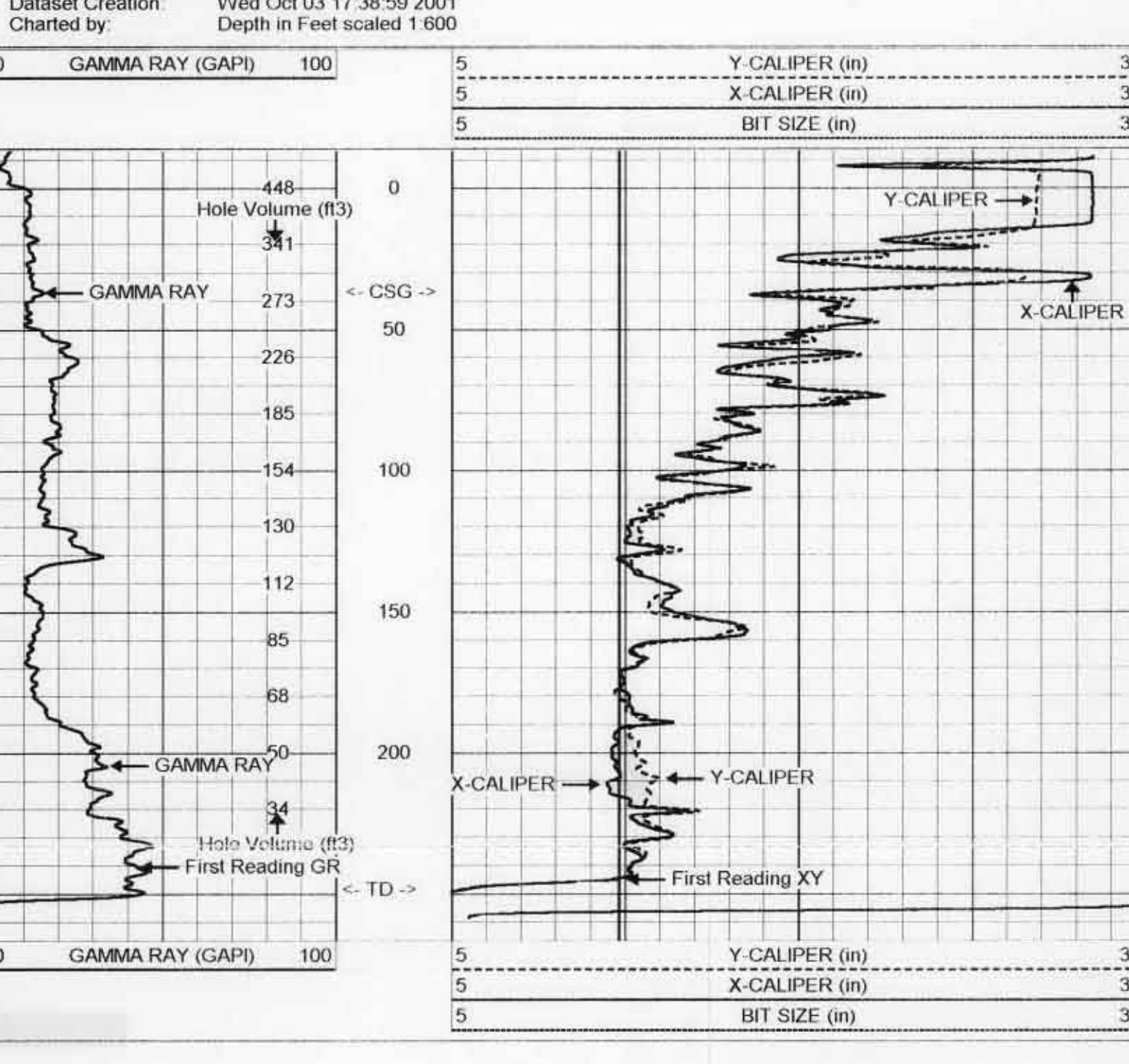
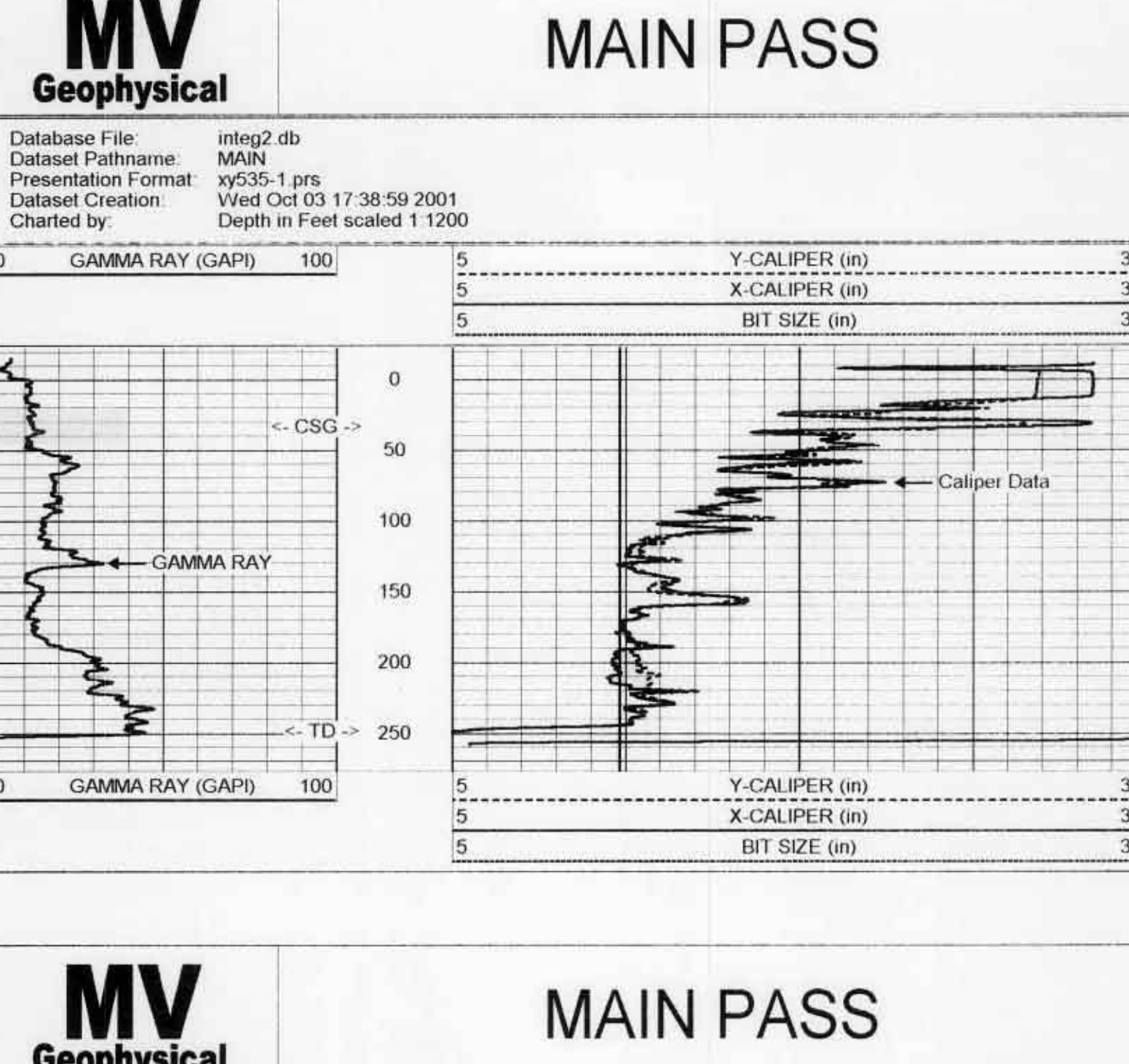
Estimated Cement Top: n/a
 Time Logged to Bottom: 16:15:10:401
 Equipment Number: AMVGS-1
 Location: FTN
 Recorded By: S. Mihalj/Vincent
 Witnessed By: K. Corneil/Vincent
 Run Number: 12.25"
 Bit Size: 24/8
 Weight: 24/8
 From: 0
 To: 250

Gamma Record: 45"
 Surface Slings: 37.75 WT
 Production Slings: SURFACE
 Lineer No.: 2001149 Job # 08301

All interpretations are opinions based on inferences from electrical or other measurements and we cannot and do not guarantee the accuracy or correctness of any interpretation, and we shall not, except in the case of gross or willful negligence on our part, be liable or responsible for any loss, costs, damages or expenses incurred or sustained by anyone resulting from any interpretation made by any of our officers, agents or employees. These interpretations are also subject to our general terms and conditions set out in our current Price Schedule.

Comments

MAXIMUM Arm extension=35"



XY Caliper Calibration Report

Serial Number:	01S		
Tool Model:	XYCS		
Performed:	Wed Oct 03 17:15:04 2001		
Small Ring:	6	in	
Large Ring:	15.25	in	
	X Caliper	Y Caliper	
Reading with Small Ring:	595.124	546.07	cps
Reading with Large Ring:	776.915	727.164	cps
Gain:	0.0508826	0.0510783	
Offset:	-24.2815	-21.8923	

Gamma Ray Calibration Report

Serial Number:	02		
Tool Model:	GROH		
Performed:	Wed Oct 03 16:53:11 2001		
Calibrator Value:	120	GAPI	
Background Reading:	7.88303	cps	
Calibrator Reading:	178.085	cps	
Sensitivity:	0.705046	GAPI/cps	

