

Site Name KRMGW		Date of Field Work 21-aug-14
Party Chief Ebanks	Field Book Name/Number SCADA 11	Page Number(s) 19
Site Benchmark Name DF-3 RESET 2000	Benchmark Elevation (NAVD88) 9.607	Datum Offset to NGVD29 1.529
Reference Elevation (NAVD 88) 12.856' STG1 12.016 STG2		Existing Tag Elevation (Datum) None
Latitude 25° 54' 35.8"	Longitude 80° 28' 06.9"	

Notes:
Tagged in NGVD29

Photographs

Overall Site



Looking Northeasterly



Brass Tag Close Up

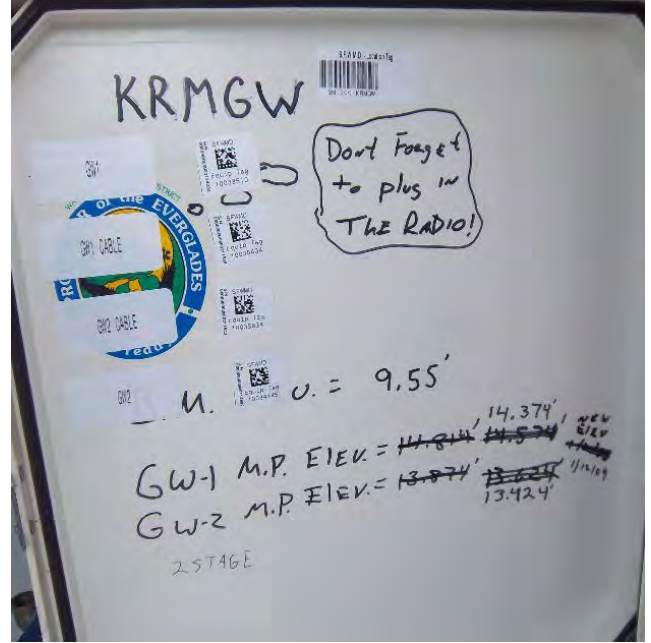


Brass Tag Close Up





Reference
Points



Ebanks
Babserin

hec. TWP Rge
Establish Ref. elev for **KRM GW @ L30**
Krome Ave

HTA	+	HT.I.	-	Elev	Remarks
B.M. DF-3	3.22	12.732		9.512	FIND SPAND ALUM DISK IN CONCRETE (FRONT OF WELL) [INVERTED]
		11.31598			
B.M. 2	+0.70		12.01598	13.342	
B.M. 1	+1.54		12.85598	14.272	[INVERTED]
B.M. DF-1		2.53		10.202	[10.200]

9.6068 NGVD29
8.09598 NAVD88

10.2168 NGVD29
8.70598 NAVD88

Ebanks
Rodriguez

hec 27 TWP 44 Rge 39
Verify Ref Elev for G-308 H/W well & Check

HTA	+	HT.I.	-	Elev	Remarks
B.M. G-308	4.375	19.205		14.83	(88)
				14.85	
H2O		8.53		10.675	(10.68)
HW		2.148		17.057	

DTW
7.00
-.57

6.43
10.627

12.07 G308
11.53 G259
11.48 G251

DAVE Co. Structures #B#2 5/10/5/97
SEC 3 - Twp S2S RGE 39E

bench mark to established elevation for Ben's
Set at ~~Florida~~ Research well site. Located
on South side of LeBo Canal 1.2 mi ± S.W. Most
Kilome Ave from N.E. Thompson Co. Park.
Also check Eas' Along Levee.

Ref.

Spot Note: 8793 A 24" = 2.9815m
CERRM (29) = 9.782 ft.
Correction to pts. on Run = 0.038'

STA	+	H.I.	-	ELEV	BM ELEV
BM.	3.70 9.95	13.52		9.82	[9.823] 9.777
A.			5.66 7.99	7.86	
	5.02 8.63	12.88			
A.			4.94 8.71	7.94	
	5.60 8.05	13.54			
A.			11.88 8.77	8.66	
	5.04 8.61	13.70			
A.			3.93 9.72	9.77	
	3.55 10.10	13.32			
A.			3.94 9.71	9.38	

DAVE Co. Structures #B#2 05/10/5/97

FRANKS &
SUSANSON

8.2709' (2.521m) NAVD88
9.7818' (2.9815m) NGVD29

Comments:

BM is NGS "8793 A 24" (as described (description required))
Balanced value per Carl Zeiss' adjustment. J. Coth

FRANKS
SUSANSON

54

Dade Co. Structures #12 05/05/97

Cond. In. Pa. SB

CPA	I	H.I.	—	Elav	Bm Elav
	4.40 9.25	13.78		9.38	
↑			3.81 9.84	9.97	
	4.27 9.38	14.24			
↑			4.33 9.32	9.91	
	4.43 9.22	14.34			
↑			4.06 9.59	10.28	
	5.26 8.39	15.54			
↑			4.24 9.41	11.30	
	4.73 8.92	16.03			
Bm ICE 3709			3.74 9.91	12.29	[12.30] INT. 10.01
<u>Return Levels</u>					
Bm ICE 3709	3.90 9.75	16.19		12.29	
			4.89 8.76	11.30	

54

Dade Co. Structures #12 05/05/97

Comments.

has hole 3709 on SE Cor of Home Ave (SR 997) bridge over
C-16 (MIAMI CANAL) PUBLISHED ELEV FOR ICE 3709 = 12.211'

ICE 3709 (ABOVE)

Feb 5/23/97

Course No. 16.50

STA	x	H.I.	-	Elev	Bar Elev
	3.93 9.72	15.23		11.30	
↑			4.98 8.67	10.25	
	4.10 9.55	14.35			
↑			4.46 9.19	9.89	
	4.54 9.11	14.43			
↑			4.51 9.14	9.92	
	3.91 9.74	13.83			
↑			4.61 9.04	9.22	
	3.69 9.96	12.91			
↑			3.17 10.48	9.74	
	3.92 9.73	13.66			
↑			5.04 8.61	8.62	
	4.52 9.13	13.14			
↑			5.26 8.39	7.88	

Comments

5/22/07

⑤ Dave Co. Structures #2 05/05/97

Consider Pt. 55

GRA	x	H.I.	-	Elev	Bm Elev
	5.27	13.15		7.88	
	8.38				
↑				5.36	7.79
				8.29	
	5.79	13.58			
	7.86				
Bm.				3.775	9.805 [9.823]
				9.875	10.015

Dave Co. Structures #2 05/05/97

⑤

Comments

bm is near "an 93 A24 (See Pt. 55)

200
5/20/97

⑤ Dave G. Structures FB#2 05/06/97

Branch Run Counts

Loc	+	H.I.	-	Total	Banked
Bun for 15709	4.62 9.03	16.92		12.30	[12.30]
P			0.95 12.70	15.97	
	9.00 10.65	24.97			
P			4.96 8.49	20.01	
	4.42 9.23	24.43			
P			4.15 9.50	20.28	
	4.57 9.08	24.85			
P			4.83 2.82	20.02	
	4.62 9.03	24.64			
P			4.24 9.41	20.40	
	4.79 8.86	25.19			
P			4.66 8.99	20.53	
	4.37 9.28	24.90			
P			4.77 8.88	20.13	

Dave G. Structures FB#2 05/06/97 ⑤

FRANKS
SWANSON

Comments
(see p. 54)

~~FRANKS~~
SWANSON

Lowest to. to. 57

LYA	I	H.I.	-	Elev	Sum Elev
	4.80 8.85	24.93		20.13	
P.			5.00 8.65	19.93	
	4.69 8.96	24.62			
P.			5.04 8.61	19.58	
	5.35 8.30	24.93			
P.			4.88 8.77	20.05	
	4.75 8.90	24.80			
Bm ICE 3701			5.66 7.99	19.14	[19.14]

Lowest Levels

Bm ICE 3701	5.75 7.90	24.89		19.14	
P.			4.84 8.81	20.05	
	4.97 8.68	25.02			
P.			5.46 8.19	19.56	

Comments.

has ICE 3701 (AS DESCRIBED) description provided
PUBLISHED ELEVATION FOR ICE 3701 = 19.458'

(SEE ABOVE)

~~22~~
5/22/77

⑨ Dave Co. Structures #2 05/06/97
 COND. No. 58

LTA	L	H.	-	ELEV	km ELEV
	4.98 8.67	24.54		19.56	
AP.			4.68 8.97	19.86	
	5.07 8.58	24.93			
AP.			5.04 8.61	19.89	
	5.04 8.61	24.93			
AP.			4.59 9.06	20.34	
	4.99 8.66	25.33			
AP.			4.95 8.70	20.38	
	4.12 9.53	24.50			
AP.			4.48 9.17	20.02	
	4.89 8.76	24.91			
AP.			4.67 8.98	20.24	
	4.44 9.21	24.68			
AP.			4.65 9.00	20.03	

Dave Co. Structures #2 05/06/97 . ⑨

Comments

Feb 5/21/97

②

DADE Co. Structures FB#2 5/16/97

Course hr. for 59

L70A + U.I. - Elev. bar Elev

5.09 25.12 20.03
8.56

TP. 9.17 15.95
10.48

1.16 17.11
12.49

Bar [12.30]
FCE 3709 4.80 12.31
8.85 Elev. = 10.01

DADE Co. Structures FB#2 05/06/97

②

Comments

(see per. Sec 9 57)

DADE
5/21/97

(11) DATE Co. Structures FR#2 05/06/197

beared Run Camp

STA	x	H.I.	-	Elev	Bar Elev
Bar	5.46	24.60		19.14	[19.14]
ICE 3701	8.19				
IP.			4.46	20.14	
			9.19		
	4.57	24.71			
	9.08				
IP.			5.11	19.60	
			8.54		
	4.71	24.31			
	8.94				
IP.			4.22	20.09	
			9.43		
	4.50	24.59			
	9.15				
IP.			4.83	19.76	
			8.82		
	5.11	24.87			
	8.54				
IP.			5.04	19.83	
			8.61		
	5.27				
	4.05	25.10			
	8.38				
IP.			5.10	20.00	
			8.55		
	4.64	24.64			
	9.01				
IP.			4.44	20.20	
			9.21		

DATE Co. Structures FR#2 05/06/197

FRANK T
SUSANSON

(61)

Comments
(see p. 58)

FRANK
SUSANSON
5/22/197

COND. FC. P. 61

WTA	+	H.I.	-	Elev	Ben Elev
	4.66 8.99	24.86		20.20	
P.			5.15 8.50	19.71	
	5.50 8.15	25.21			
P.			4.96 8.69	20.25	
	5.07 8.58	25.32			
P.			5.01 8.64	20.31	
	4.62 9.13	24.83			
P.			4.58 9.07	20.25	
	3.92 9.73	24.17			
Ben FC 3702			4.49 9.16	19.68 [19.68]	

Lowest Levels

Ben FC 3702	4.63 9.02	24.31		19.68	
P.			4.06 9.59	20.25	

Comments

AND FC 3702 (AS DESCRIBED) DECLINATION, PRODUCED.
 FURNISHED ELEVATION FOR FC 3702 = 19.973

(SEE ABOVE)

FB
5/25/97

(13) Dave Co Structures PB#2 05/06/197

Consolidated P.C. 62

Time	H.I.	Event	Sum Total
	4.59 9.06	2484	20.25
TP.		4.69 9.05	20.24
	5.03 8.62	2527	
P.		5.03 8.62	20.24
	4.89 8.76	25.13	
P.		5.45 8.20	19.68
	5.12 8.53	2480	
P.		4.63 9.02	20.17
	4.40 9.25	24.57	
TP.		4.63 9.02	19.94
	5.15 8.50	25.09	
P.		5.50 8.15	19.59
	5.18 8.47	24.77	
TP.		5.05 8.60	19.72

Dave Co. Structures PB#2 05/06/197

(13)

Comments

5/28/97

Cont'd fr. p. 63

GRA	+	H.I.	-	EW	bn Elev
	4.69 8.96	24.41		19.72	
P.			4.76 8.89	19.65	
	4.50 9.15	24.15			
P.			4.58 9.07	19.57	
	5.01 8.64	24.58			
P.			4.41 9.24	20.17	
	4.43 9.22	24.60			
Bm see 3701			5.46 8.19	19.14	[19.14]

Comments.

(see pg 58 & 61)

5/22/97

Bunch Run Cont'd

TRA	T	U.I.	—	Elev	Run Elev
Run see 3702	5.80	25.48		19.68	[19.68]
P.	7.85			5.38	20.10
				8.27	
	4.58	24.68			
P.	9.08			4.21	20.47
				9.44	
	4.73	25.20			
P.	8.92			5.19	20.01
				8.46	
	4.78	24.79			
P.	8.88			4.59	20.20
				9.06	
	4.82	25.02			
P.	8.83			4.68	20.34
				8.98	
	4.69	25.03			
P.	8.97			4.85	20.18
				8.80	
	4.86	25.04			
P.	8.79			5.35	19.69
				8.31	

FRANKS π
JUNIOR
BURKE

Comments.
(see pg. 62)

STA	+ 5.10 8.56	H.I. 24.79	—	Elev 19.69	Bm Elev
TP.			5.29 8.36	19.50	
TP.	5.49 8.16	24.99			
TP.			5.60 8.06	19.39	
TP.	4.95 8.71	24.34			
TP.			4.10 9.55	20.24	
TP.	4.60 9.05	24.84			
TP.			5.13 8.53	19.71	
TP.	4.70 8.96	24.41			
TP.			3.84 9.81	20.57	
TP.	4.51 9.14	25.08			
TP.			5.15 8.51	19.93	
TP.	4.66 9.00	24.59			
B.M. ICE 3703			5.25 8.40	19.34 [19.34]	

Comments

ICE (ICE 3703 (AS DESCRIBED) DESCRIPTION PROVIDED
DESIGATED ELEVATION FOR ICE 3703 = 19.670'

5/28/97

COND. R. PG. 66

RETAIN LEVELS

GRA	T	H.I.	-	Face	bm elev
bm.	5.10 8.55	24.44		19.34	
TP			4.51 9.15	19.93	
	4.99 8.67	24.92			
TP			4.31 9.34	20.61	
	3.68 9.97	24.79			
TP			4.59 9.07	19.70	
	5.08 8.58	24.78			
TP			4.58 9.07	20.20	
	4.07 9.58	24.27			
TP			4.89 8.77	19.38	
	5.47 8.19	24.85			
TP			5.42 8.23	19.43	
	5.34 8.31	24.77			
TP			5.03 8.63	19.74	

Comments.
(see pg. 66)

(68)

Dixie Co. Structures FB#2 05/07/97
Course No. Pa. 67

Loc	+	Ht.	-	Dist	km (Dist)
	5.22 8.44	24.96		19.74	
P.			4.78 8.87	20.18	
	4.76 8.89	24.94			
P.			4.60 9.06	20.34	
	4.64 9.02	24.98			
P.			4.84 8.81	20.14	
	4.45 9.20	24.59			
P.			4.55 9.11	20.04	
	5.09 8.57	25.13			
P.			4.68 8.97	20.45	
	4.07 9.58	24.52			
P.			4.39 9.27	20.13	
	5.26 8.40	25.39			
Sum.			5.715 7.935	19.675	[19.668]

File 3702

Dixie Co. Structures FB#2 05/07/97

(68)

Comments.

(see Pa. 62 & 65)

~~42~~
5/22/97

COND. No. 108 bench line courses

STA	+	H.V.	-	Elev	Bm Elev
Bm ICE 3703	2.25 11.41	21.59		19.34	[19.34]
TP.			13.92 6.74	7.67	
	5.39 8.26	13.56			
Bm. "DF-02 1997"			2.74 10.92	10.32	10.2768 NGVD29 8.76598 NAVD88
Bm. "DF-01 1997"			2.80 10.86	10.26	10.2168 NGVD29 8.70598 NAVD88
Bm. "DF-03 1997"			3.51 10.15	9.55	9.5068 NGVD29 7.9959 NAVD88
Bm.	3.32 10.34	12.87		9.55	
Bm.			2.61 11.05	10.26	
Bm.			2.55 11.11	10.32	
TP.			5.20 8.45	7.67	
Bm. ICE 3703	13.88 10.78	21.55	7.21 11.45	19.34	[19.34]

Comments:
ICE 3703 (Pg. 66)

19.2968 NGVD29
17.7860 NAVD88

Bm is SIGNED ALUM CAP SET TOP OF CONC. SLAB
sampled "Bm DF-02 1997"

Bm is SIGNED ALUM CAP SET TOP CONC. SLAB
sampled "Bm DF-01 1997"

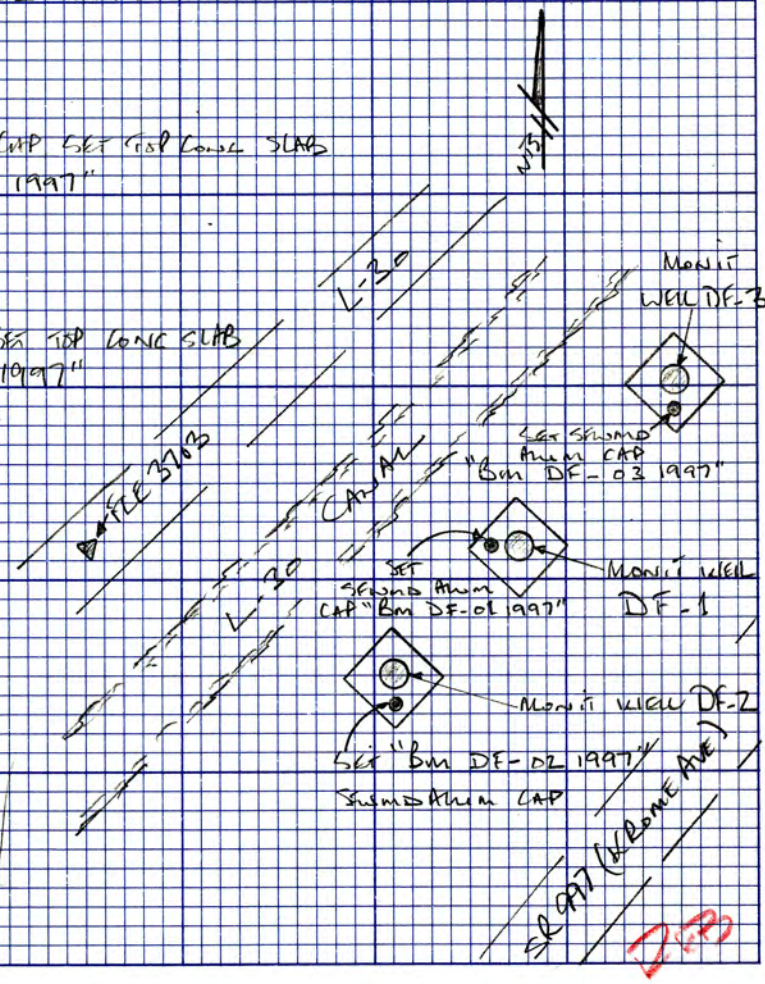
Bm is SIGNED ALUM CAP SET TOP CONC. SLAB
sampled "Bm DF-03 1997"

"Bm DF-03 1997"

"Bm DF-01 1997"

"Bm DF-02 1997"

Bm is ICE 3703.



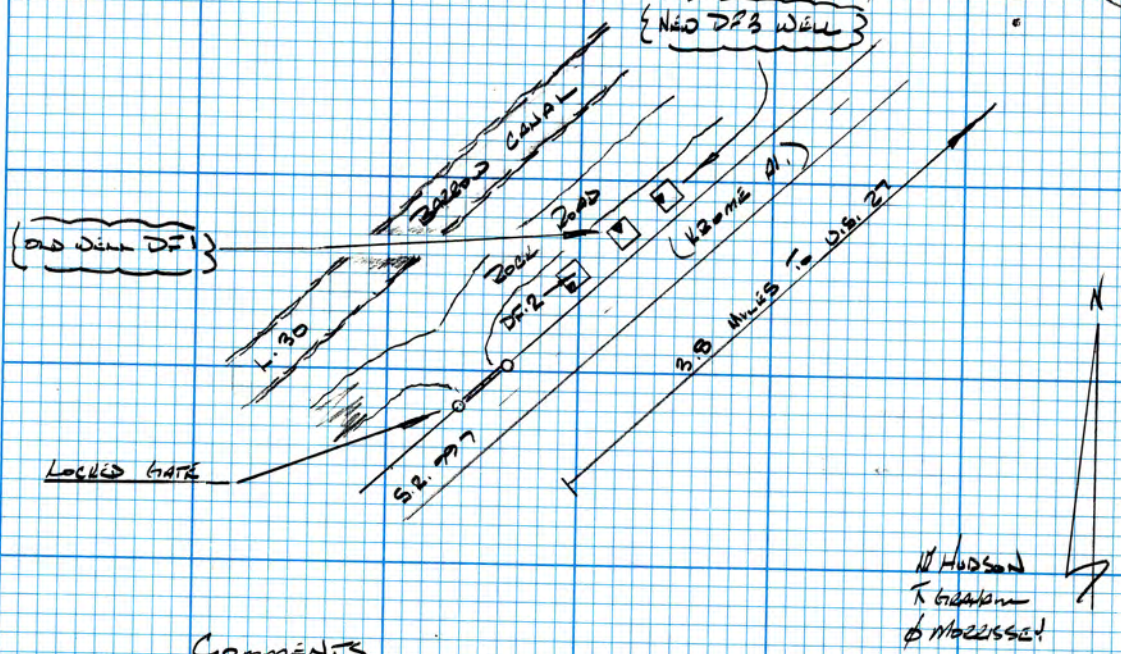
SEC. 19 TWP. 52S R2E. 39E

ESTAB. ELEV. @ THE BASE OF MONITORING WELL DF-3 AS PER MICHAEL BINNETT RED.

- Zifs
1. 3/31/00 memo from MICHAEL BINNETT TO MADONNE MCOO! EXPLANING RED.
 2. DOTT RED No. 00-04018
 3. DADÉ Co. STRUCTURES FB #2 (Pg. 69)
 4. PENNSUCO Fla QUAD SHEET.

STA	+	HE	-	ELEV.	B
	2.12				10.26
	5.15	12.38			
Bm			2.73		
			4.54	9.65	7.65
		<u>Revised</u>	<u>Levels</u>		
	2.80				
	4.47	12.45			
Bm			2.19		
			5.08	10.20	10.20

END DF3 Well Levels



COMMENTS

Bm DF 01 1997" AS PER DADÉ Co STRUCTURES FB #2 (Pg. 69)

10.2168 NGVD29
8.70598 NAVD88

9.6068 NGVD29
8.09598 NAVD88

Bm DF 03 RESET, A STAMPED ALUM CAP SET IN TOP OF CONC WELLS PAD @ THE SOUTH BASE OF DF3 WELL STAMPED 'DF03 RESET 2000' MARK IS 3.8 MILES S.W. OF US 27 ON S.R. 997, 400' N.E. ALUM LEVEL RD FROM GATE @ 100' E. OF E. TOP OF CANAL BANK, INSIDE A 4x4x8' CHAINLINK FENCE

Bm Aboli ELEV 0.00'

W Hudson
K. Graham
D. Moresset

PROJECT: NGS
 LINE FROM 8793A24 TO FCE 3703

FIELD BOOK DCS #2 p.53-69
 PARTY CHIEF EBANKS

ORDER 3rd
 COUNTY MIAMI-DADE

ADJ. BY HVE
 DATE 11/07/16

SECTION	DISTANCE	F B	SUM ROD READINGS		DIFF. ELEV.	MEAN DIFF.	ELEVATIONS			REMARKS
			BACK +	FWD. -			UNADJ.	CORR.	ADJ.	
8793A24										
		F	46.00	43.53	+2.47					
		B	43.57	46.055	-2.485					
FCE 3709						+2.4775				
		F	55.98	49.14	+6.84					
		B	50.50	57.33	-6.83					
FCE 3701						+6.835				
		F	57.93	57.39	+0.54					
		B	57.62	58.08 58.16	-0.54					
FCE 3702						+0.54				
		F	68.27	68.61	-0.34					
		B	67.22	66.885	+0.335					
FCE 3703						-0.3375				

\checkmark 9.782 (27) 2.9815m
 \checkmark 8.271 (88) 2.521m

\checkmark 12.2593
 \checkmark 10.7485

\checkmark 19.0943
 \checkmark 17.5835

\checkmark 19.6345
 \checkmark 18.1235

\checkmark 19.2968
 \checkmark 7.7259
 60

SOUTH FLORIDA WATER MANAGEMENT DISTRICT



Survey Data Entry
and Retrieval Application

Survey Data Entry and Retrieval Application (SDERA) Print Output

Control Point Search Results

Derived Data - Denoted By:
**

Designation	DF03RESET	Record State	ACCEPTED
NGS PID			
Project Name	KRMGW WELL SITE	Date Entered/Updated	01/07/2016
Updated By	hehmke	Status	
Party Chief	HUDSON, RONNIE	Type	V
Monument Set By	SOUTH FLORIDA WATER MANAGEMENT DISTRICT	Date Established	
County	MIAMI-DADE COUNTY	Section	20
Township	52	Range	39
Quadrangle	PENNSUCO	Offset (29 to 88)	
NGS Source BM		CCR Link	
Ctrl Pt Source(s)			

Horizontal	NAD 1927	NAD 1983	Vertical	NGVD 1929	NAVD 1988
Latitude		25 54 35.8	Class		
Longitude		80 28 06.96	Order		
Northing(Y)			Elevation	9.607	8.096
Eastng(X)			Measurement Unit	Feet	Feet
Class					
Order					
NAD83 Adj Year					

Field Book
Dade County Structure Book 4

Field Book Pages
37

Stamping
DF03 Reset 2000

How to Reach

From the intersection of United States Highway 27 (U.S.27) and State Road 997 (S.R.997), go Southwest along said S.R. 997, 3.8 miles to a dirt road to the Northwest; turn right (Northwest) and go to a locked gate; pass through the gate and turn right on to a rock road to the Northeast paralleling S.R 997 and go 330 feet to well Site DF2, continue Northeast along the rock road 115 feet to Well DR1; continue Northeast along the rock road 200 feet to KRMGW well site (formerly DF3 well site) on the right and station location.

Station is a South Florida Water Management District aluminum cap stamped DF03 Reset 2000 set in the concrete well pad on the South side near the middle and approximately 3-inches from the South edge.

The station is 100 feet more or less Southeasterly of the Southeasterly top of Levee 30 borrow canal bank.



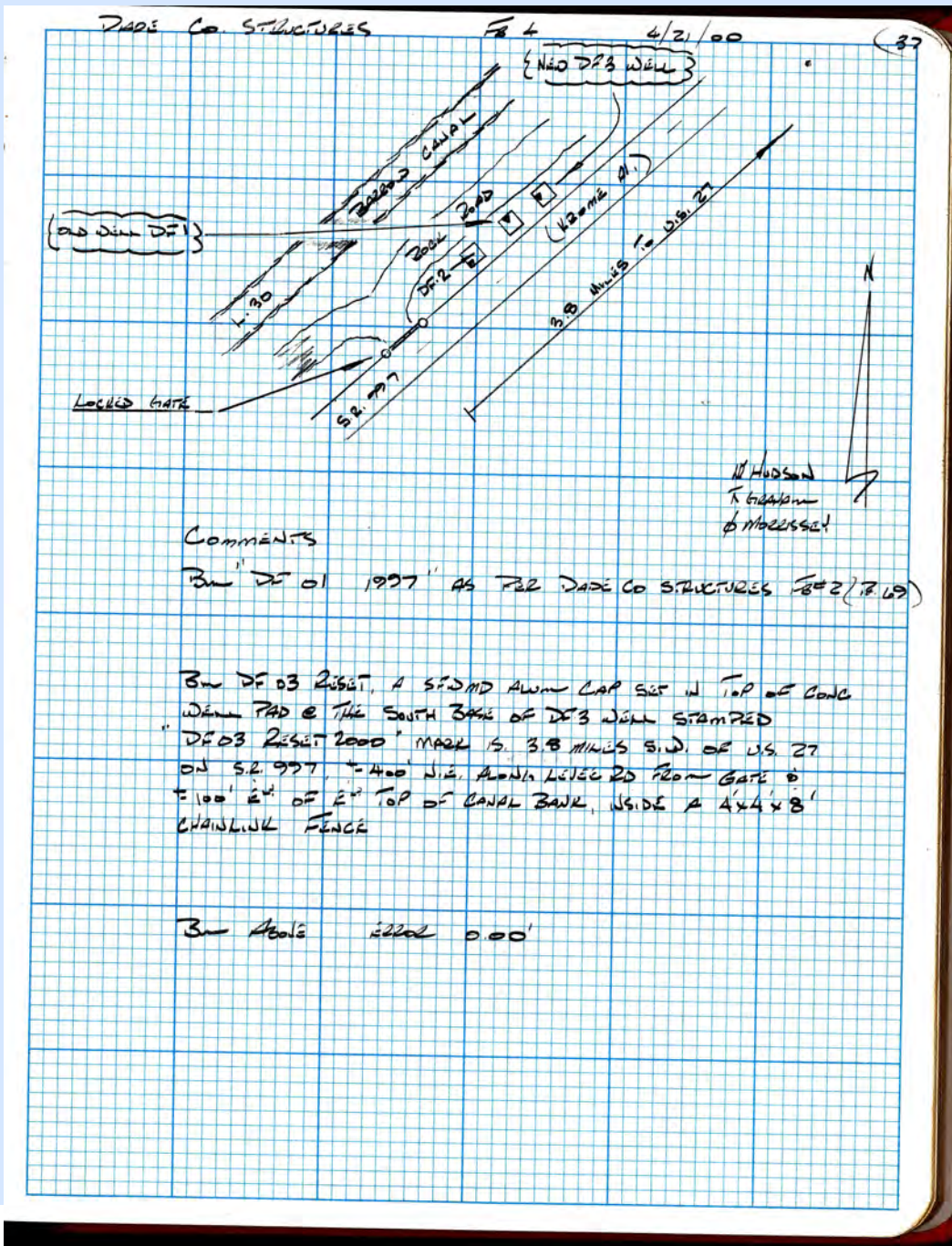
NGS Source benchmark: 87 93 A24 (AB7763).

Description

A South Florida Water Management District aluminum disk

DISCLAIMER:

The South Florida Water Management District (hereinafter referred to as the DISTRICT) shall not be held liable for improper or incorrect use of the data, information, apparatus, products, processes or materials described and/or contained herein. These data, information, apparatus, products, processes, materials and related graphics are not legal documents and are not intended to be used as such. The user hereby recognizes that the information, data, apparatus, products, processes and materials are dynamic and may change over time without notice. However, the DISTRICT makes no commitment to update the information, data, apparatus, products, processes or materials contained herein.



SOUTH FLORIDA WATER MANAGEMENT DISTRICT



Survey Data Entry and Retrieval Application (SDERA) Print Output

Control Point Search Results

Derived Data - Denoted By:
**

Designation	DF01	Record State	ACCEPTED
NGS PID			
Project Name	DF01 WELL SITE	Date Entered/Updated	01/07/2016
Updated By	hehmke	Status	
Party Chief		Type	V
Monument Set By	SOUTH FLORIDA WATER MANAGEMENT DISTRICT	Date Established	
County	MIAMI-DADE COUNTY	Section	20
Township	52	Range	39
Quadrangle	PENNSUCO	Offset (29 to 88)	
NGS Source BM		CCR Link	
Ctrl Pt Source(s)			

Horizontal	NAD 1927	NAD 1983	Vertical	NGVD 1929	NAVD 1988
Latitude		25 54 34.25	Class		
Longitude		80 28 08.36	Order		
Northing(Y)			Elevation	10.217	8.706
Easting(X)			Measurement Unit	Feet	Feet
Class					
Order					
NAD83 Adj Year					

Field Book
Dade County Structure Book 2

Field Book Pages
69

Stamping
BM DF01 1997

How to Reach

From the intersection of United States Highway 27 (U.S.27) and State Road 997 (S.R.997), go Southwest along said S.R. 997, 3.8 miles to a dirt road to the Northwest; turn right (Northwest) and go to a locked gate; pass through the gate and turn right on to a rock road to the Northeast paralleling S.R 997 and go 330 feet to well Site DF2, continue Northeast along the rock road 115 feet to Well DR1 and station location.

Station is a South Florida Water Management District aluminum cap stamped BM DF01 1997 set near the Southwest corner of concrete well pad.

NGS Source benchmark: 87 93 A24 (AB7763).

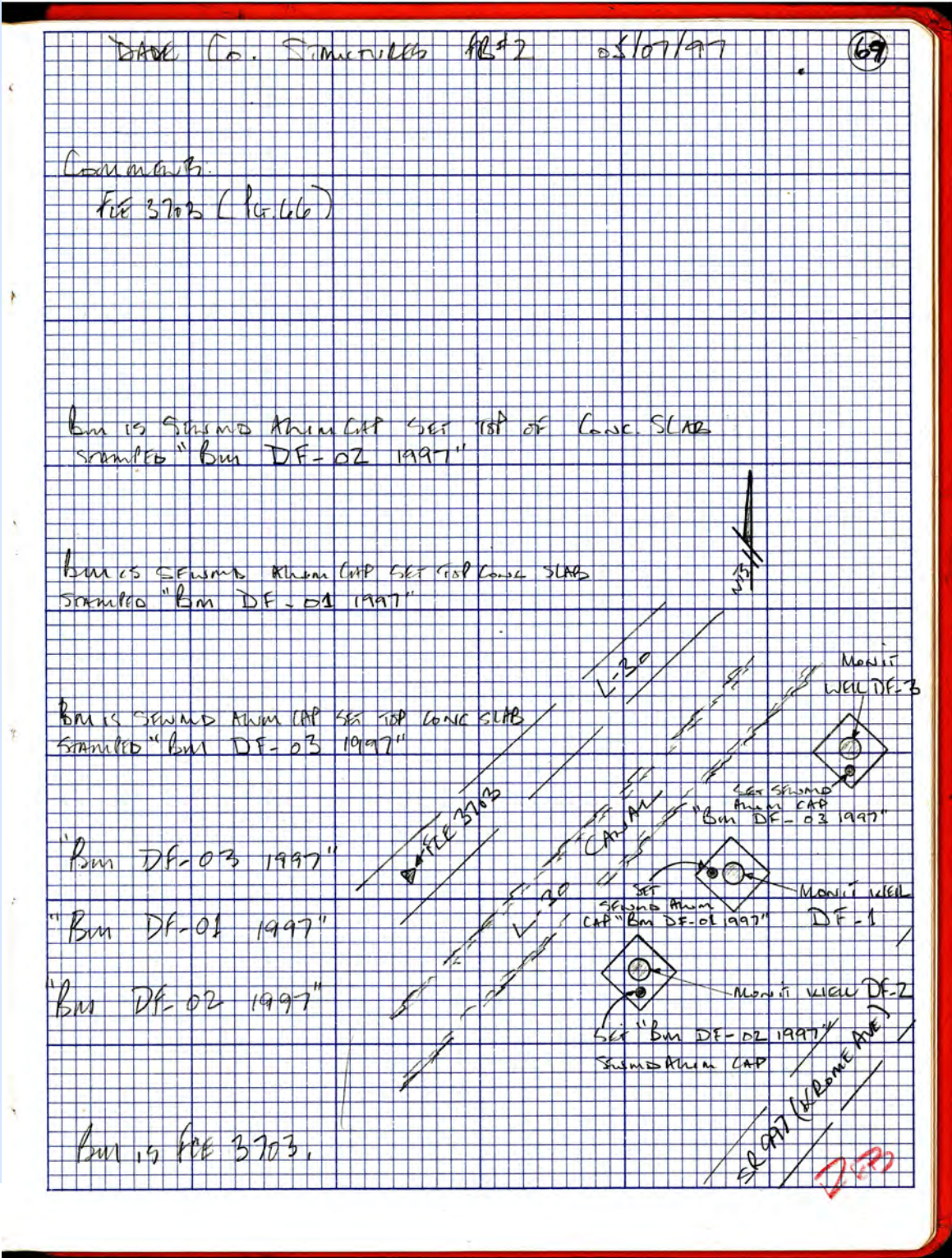
Description

Station is a South Florida Water Management District aluminum cap on a concrete well pad.



DISCLAIMER:

The South Florida Water Management District (hereinafter referred to as the DISTRICT) shall not be held liable for improper or incorrect use of the data, information, apparatus, products, processes or materials described and/or contained herein. These data, information, apparatus, products, processes, materials and related graphics are not legal documents and are not intended to be used as such. The user hereby recognizes that the information, data, apparatus, products, processes and materials are dynamic and may change over time without notice. However, the DISTRICT makes no commitment to update the information, data, apparatus, products, processes or materials contained herein.



From the "ngvd29.txt" file provided by NGS for the CERP Geodetic Vertical Control Project.						
Line/Part: L26195		SSN+: mark floated, SSN*: mark constrained, SSN#: mark floated & constrained				
Mark ID	SSN	PID	Designation	Geopotential	Elevation	Codes
785	0006	AB7763	87 93 A 24	2.9218	2.9815	

The NGS Data Sheet

See file [dsdata.txt](#) for more information about the datasheet.

```

PROGRAM = datasheet95, VERSION = 8.8
1      National Geodetic Survey,  Retrieval Date = JANUARY  6, 2016
AB7763 *****
AB7763 DESIGNATION - 87 93 A 24
AB7763 PID - AB7763
AB7763 STATE/COUNTY- FL/MIAMI-DADE
AB7763 COUNTRY - US
AB7763 USGS QUAD - PENNSUCO (1988)
AB7763
AB7763 *CURRENT SURVEY CONTROL
AB7763
AB7763* NAD 83(1986) POSITION- 25 57 01. (N) 080 25 52. (W) SCALED
AB7763* NAVD 88 ORTHO HEIGHT - 2.521 (meters) 8.27 (feet) ADJUSTED
AB7763
AB7763 GEOID HEIGHT - -24.867 (meters) GEOID12B
AB7763 DYNAMIC HEIGHT - 2.516 (meters) 8.25 (feet) COMP
AB7763 MODELED GRAVITY - 979,044.3 (mgal) NAVD 88
AB7763
AB7763 VERT ORDER - FIRST CLASS II
AB7763
AB7763.The horizontal coordinates were scaled from a topographic map and have
AB7763.an estimated accuracy of +/- 6 seconds.
AB7763.
AB7763.The orthometric height was determined by differential leveling and
AB7763.adjusted by the NATIONAL GEODETIC SURVEY
AB7763.in March 1997.
AB7763
AB7763.Significant digits in the geoid height do not necessarily reflect accuracy.
AB7763.GEOID12B height accuracy estimate available here.
AB7763
AB7763.The dynamic height is computed by dividing the NAVD 88
AB7763.geopotential number by the normal gravity value computed on the
AB7763.Geodetic Reference System of 1980 (GRS 80) ellipsoid at 45
AB7763.degrees latitude (g = 980.6199 gals.).
AB7763
AB7763.The modeled gravity was interpolated from observed gravity values.
AB7763
AB7763; North East Units Estimated Accuracy
AB7763;SPC FL E - 179,230. 256,980. MT (+/- 180 meters Scaled)
AB7763
AB7763 SUPERSEDED SURVEY CONTROL
AB7763
AB7763.No superseded survey control is available for this station.
AB7763
AB7763_U.S. NATIONAL GRID SPATIAL ADDRESS: 17RNJ569703(NAD 83)
AB7763
AB7763_MARKER: DD = SURVEY DISK
AB7763_SETTING: 7 = SET IN TOP OF CONCRETE MONUMENT
AB7763_STAMPING: 87 93 A 24
AB7763_MARK LOGO: FLDT
AB7763_MAGNETIC: M = MARKER EQUIPPED WITH BAR MAGNET

```


AB7763_STABILITY: C = MAY HOLD, BUT OF TYPE COMMONLY SUBJECT TO
 AB7763+STABILITY: SURFACE MOTION
 AB7763_SATELLITE: THE SITE LOCATION WAS REPORTED AS SUITABLE FOR
 AB7763+SATELLITE: SATELLITE OBSERVATIONS - August 31, 2005

AB7763

AB7763	HISTORY	- Date	Condition	Report By
AB7763	HISTORY	- 1993	MONUMENTED	FLDT
AB7763	HISTORY	- 19930803	GOOD	NGS
AB7763	HISTORY	- 20001117	GOOD	FLDEP
AB7763	HISTORY	- 20050831	GOOD	WEIDEN

AB7763

AB7763 STATION DESCRIPTION

AB7763

AB7763'DESCRIBED BY NATIONAL GEODETIC SURVEY 1993 (RLT)
 AB7763'THE MARK IS ABOUT 14.5 MI (23.3 KM) SOUTHWEST OF COOPER CITY, 25.5 MI
 AB7763'(41.0 KM) NORTH-NORTHWEST OF MIAMI, AT THE JUNCTION OF U.S. HIGHWAY 27
 AB7763'AND STATE HIGHWAY 997 IN SECTION 3, TOWNSHIP 52 SOUTH, RANGE 39 EAST.
 AB7763'TO REACH THE MARK FROM THE INTERSECTION OF U.S. HIGHWAY 27 AND THE
 AB7763'EASTBOUND LANES OF INTERSTATE 75 (ALLIGATOR ALLEY), GO SOUTH ON U.S.
 AB7763'HIGHWAY 27 FOR 5.90 MI (9.49 KM) TO THE INTERSECTION OF STATE HIGHWAY
 AB7763'818 (GRIFFIN ROAD), CONTINUE SOUTH ON U.S. HIGHWAY 27 FOR 3.55 MI
 AB7763'(5.71 KM) TO THE INTERSECTION OF PINES BOULEVARD, CONTINUE SOUTH ON
 AB7763'U.S. HIGHWAY 27 FOR 7.75 MI (12.47 KM) TO THE DADE-BROWARD COUNTY
 AB7763'LINE, CONTINUE SOUTH ON U.S. HIGHWAY 27 TO THE JUNCTION OF STATE
 AB7763'HIGHWAY 997 AND THE MARK ON THE RIGHT, IN THE MEDIAN OF STATE HIGHWAY
 AB7763'997, SET IN THE TOP OF A CONCRETE MONUMENT LEVEL WITH U.S. HIGHWAY 27
 AB7763'AND FLUSH WITH THE GROUND. LOCATED 81.0 FT (24.7 M) SOUTH-SOUTHWEST OF
 AB7763'A METAL LIGHT POLE WITH TWO LIGHTS ATTACHED, 62.0 FT (18.9 M) NORTH OF
 AB7763'THE APPROXIMATE CENTERLINE OF THE EASTBOUND LANE OF STATE HIGHWAY 997,
 AB7763'51.0 FT (15.5 M) EAST OF THE EDGE OF THE ASPHALT OF THE EASTBOUND LANE
 AB7763'OF STATE HIGHWAY 997, 37.5 FT (11.4 M) WEST OF THE CENTERLINE OF U.S.
 AB7763'HIGHWAY 27, 19.0 FT (5.8 M) SOUTH OF THE APPROXIMATE CENTERLINE OF THE
 AB7763'WESTBOUND LANE OF STATE HIGHWAY 997, 16.7 FT (5.1 M) WEST OF THE EDGE
 AB7763'OF THE ASPHALT OF U.S. HIGHWAY 27 AND 5.7 FT (1.7 M) SOUTH OF THE EDGE
 AB7763'OF THE ASPHALT OF THE WESTBOUND LANE OF STATE HIGHWAY 997.

AB7763

AB7763 STATION RECOVERY (2000)

AB7763

AB7763'RECOVERY NOTE BY FL DEPT OF ENV PRO 2000 (JLM)
 AB7763'RECOVERED AS DESCRIBED.

AB7763

AB7763 STATION RECOVERY (2005)

AB7763

AB7763'RECOVERY NOTE BY WEIDENER SURVEYING AND MAPPING 2005
 AB7763'RECOVERED IN GOOD CONDITION.

*** retrieval complete.
 Elapsed Time = 00:00:01

REGISTRATION WORKSHEET - KRMGW Addendum

Site Name: **KRMGW** Today's Date: **8/21/2014** Type Recorder: **CR10**
 Activity: **Addendum** Effective Date: Start Date of Data :
 Customer: **Lee Hennick/SCADA CR.10** Bus. Area: **SCADA** Agency: **SFWMD** Internal Order:
 Project Manager: **E. Ebanks** Bus. Area: **InfrStr.Mgt/Survey** Agency: **SFWMD** Fund:
 Contract #:
 Project Name: Legal Mandate:

Short Common Name / Description:

Proj. Mgr. Notes: Addendum Added to Update Surveying Data for REF. ELEV...

Site Directions: From SR 27/Krome Ave in Dade County... Proceed Southwesterly on Krome Ave to Bridge over Miami Canal... Continue westerly on Krome 2.90 mls +/- to a gate on left... enter gate and proceed easterly 250' +/- to site...

Site Address (if any):

Transportation: **Std Vehicle** Lock type or combination: **Abloy S** #

Recorder Location/Purpose: **Floridian Aquifer Wells** Structure Type:

Array ID Configuration table attached

SURVEY INFORMATION

B.M. Elevation: **10.22ft** Date: **5/7/1997** Stamp: **BM DF-1 1997**
 Agency: **SFWMD** Type: **BRASS** Datum: **NGVD 29**

Benchmark Location/ Description: Located at the SW Corner of Concrete Pad (Middle Enclosure)... stamped "BM DF-1 1997"...

COMMUNICATIONS INFORMATION

Communications System: **Loggernet** Loggernet Server: **0** Loggernet IP Address:

Tower: **ACMET** Communication Type: R.F. Code/Modem Address: R.F. Access Point:

Phone Number:

RTU Address: Gateways:

WELL INFORMATION

Sensor	Customer Ref	Ref Elev	Elev Date	Top of Well	Bottom of Well	Ground Elev	Benchmark Elev	Benchmark Datum	Ref Elevation Location
GW1		14.27ft	8/21/2014				10.22ft	NGVD 29	Mark Top of Gal. Elbow... Denoted by Brass Tag...
GW2		13.342ft	8/21/2014				10.22ft	NGVD 29	Mark Top of Gal. Elbow... denoted by Brass Tag...

Sensor	GW Sensor Location Offset	Meas Pt Elevation	GW Land Elevation	Depth of Well	Type of Well	Top of Monitored Interval	Base of Monitored Interval	Parameter Transmitted								
GW1																
GW2																

COORDINATE INFORMATION

Item/Parm	Lat	Long	X-Coord	Y-Coord	Sec	Township	Range	Quad	Basin	County	Description
GW1	25 54 35.9	80 28 07.1			20	52	39	PENNSUCO		Miami/Dade	
GW2	25 54 39.5	80 28 07.1			20	52	39	PENNSUCO		Miami/Dade	