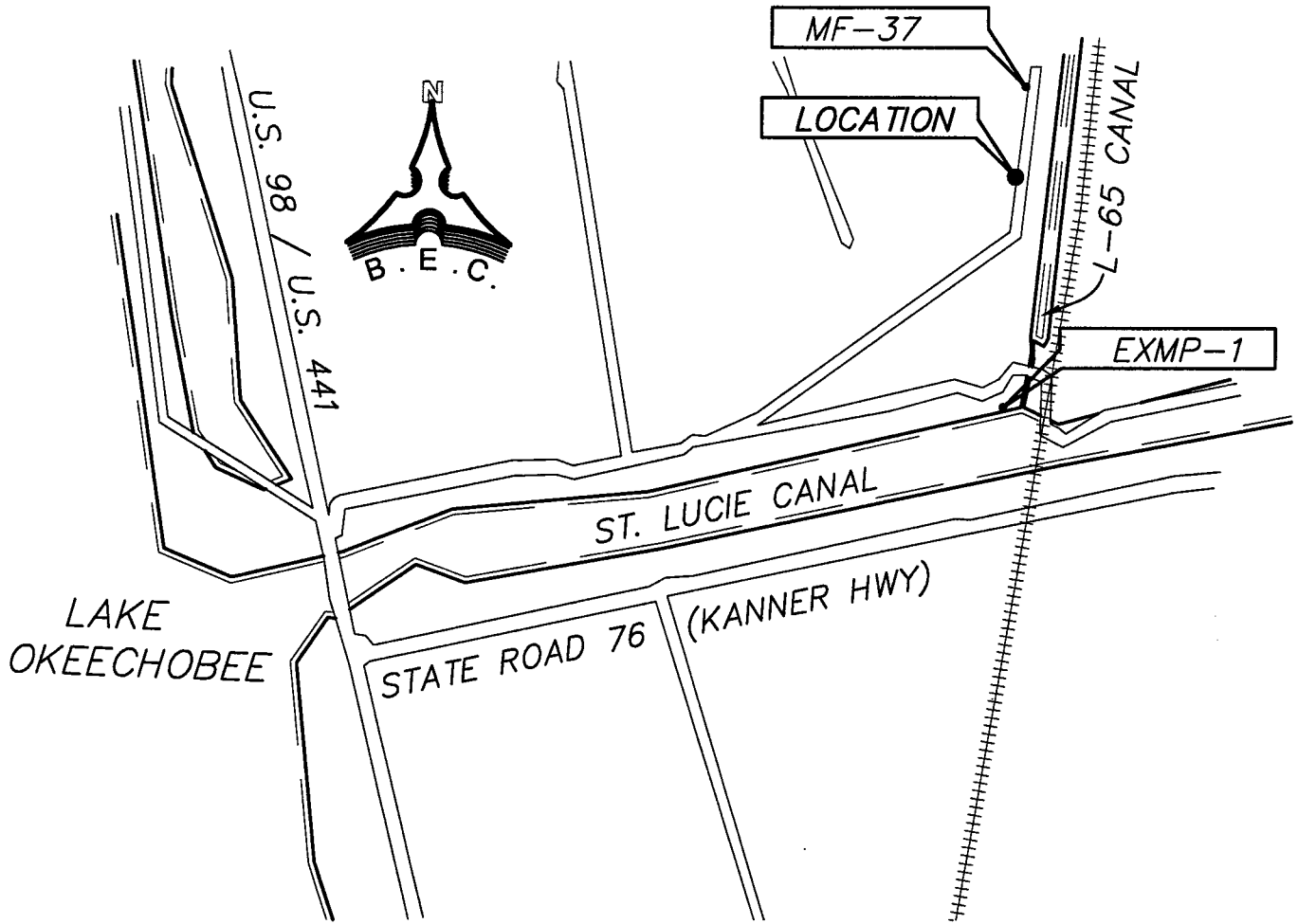


**TOPOGRAPHIC SURVEY**  
**PORT MAYACA SEISMIC SURVEY SITE**  
**IN SECTION 14-40-37, MARTIN COUNTY, FL.**



**LOCATION MAP**  
**NOT TO SCALE**

**LEGEND:**

● = FLAGS (SET BY OTHERS)

**ABBREVIATIONS:**

ELEV. = ELEVATION  
 LAT. = LATITUDE  
 LON. = LONGITUDE  
 LXX = DENOTES LINE NUMBER (SEE TABLE)  
 FXX = DENOTES FLAG NUMBER (SEE TABLE)  
 B.E.C. = BISCAYNE ENGINEERING COMPANY, INC.

BISCAYNE ENGINEERING COMPANY, INC.  
 529 WEST FLAGLER STREET, MIAMI, FL. 33130  
 (305) 324-7671  
 STATE OF FLORIDA DEPARTMENT OF BUSINESS AND  
 PROFESSIONAL REGULATION  
 EB-0000129  
 LB-0000129  
 SURVEY DATE: 06-05-2006



MIKE J. BARTHOLOMEW DATE: 06-16-2006  
 PROFESSIONAL SURVEYOR AND MAPPER No 5666  
 STATE OF FLORIDA

<b>DATE:</b> 06-16-06	<b>ORDER No.</b> 03-77720	<b>DRAWING:</b> 2091-SS-41	<b>BY:</b> WJR
<b>FOR:</b> SOUTH FLORIDA WATER MANAGEMENT DISTRICT		<b>FB No.</b> 2567	<b>SHEET:</b> 1 OF 8



**BISCAYNE ENGINEERING COMPANY, INC.**

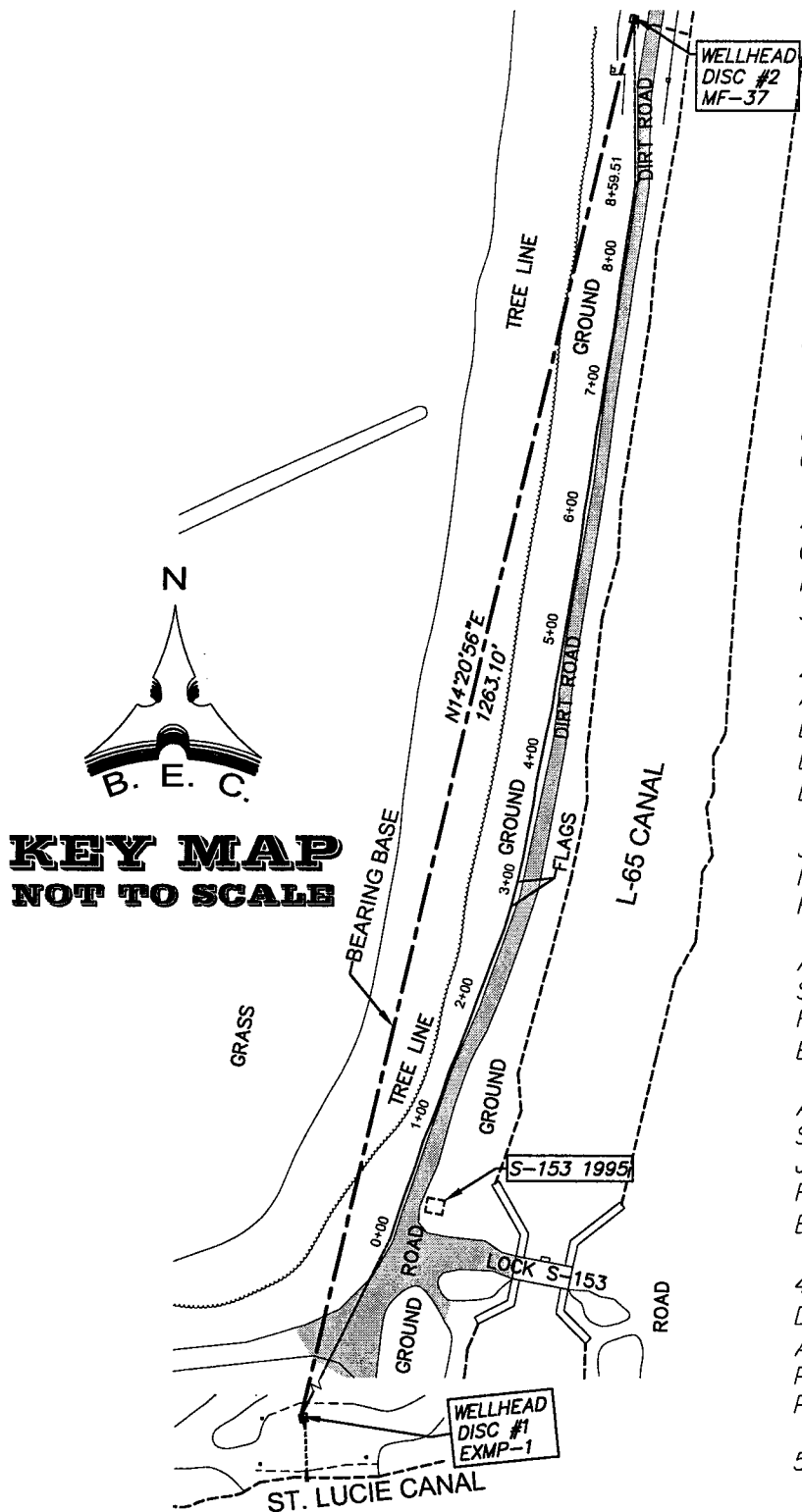
Consulting Engineers • Planners • Surveyors

MIAMI  
 529 WEST FLAGLER STREET  
 FLORIDA, 33130

PH: (305) 324-7671  
 FAX: (305) 324-1700

WEB SITE: www.biscayneengineering.com  
 E-MAIL: info@biscayneengineering.com

**TOPOGRAPHIC SURVEY**  
**PORT MAYACA SEISMIC SURVEY SITE**  
**IN SECTION 14-40-37, MARTIN COUNTY, FL.**



**SURVEYOR'S NOTES:**

1. THE SPECIFIC PURPOSE OF THIS TOPOGRAPHIC SURVEY WAS TO:

- A) LOCATE FLAGS (SET BY OTHERS)
- B) OBTAIN GROUND ELEVATIONS AT SAID FLAGS
- C) DETERMINE APPROXIMATE LATITUDE AND LONGITUDE (NAD83) OF SAID FLAGS VIA HANDHELD GPS

ALL OTHER FEATURES (TREE LINES, DIRT ROAD, CANAL, ETC.) ARE APPROXIMATE (SHOWN FOR REFERENCE ONLY) AND ARE NOT A PART OF THIS SURVEY

2. BEARINGS SHOWN HEREON ARE BASED ON AN ASSUMED MERIDIAN, AND ARE REFERENCED TO A LINE BETWEEN DISC #1 LOCATED AT EXMP-1 AND DISC #2 LOCATED AT WELL MF-37 HAVING A BEARING OF N14°20'56"E.

3. ELEVATIONS SHOWN HEREON ARE BASED ON NAVD-88 AND ARE REFERENCED TO THE FOLLOWING TWO NGS BENCHMARKS:

AJ8254  
 STAMPED X521 2001 CERP  
 FLANGE ENCASED ROD  
 ELEV. = 18.550' (NAVD-88)

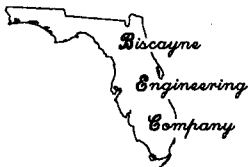
AD8713  
 STAMPED PMB BM3 1980  
 JAX FLA.  
 FLANGE ENCASED ROD WITH DISC.  
 ELEV. = 35.580' (NAVD-88)

4. LATITUDE/LONGITUDE VALUES ARE SHOWN TO 4 DECIMAL PLACES TO ILLUSTRATE (WITH RELATIVE ACCURACY) THE RELATIONSHIP BETWEEN ADJACENT POINTS. THE ABSOLUTE ACCURACY OF ANY GIVEN POINT, HOWEVER, IS ±15 FEET.

5. REFERENCE B.E.C. DRAWING 2089-SS-27

**KEY MAP**  
**NOT TO SCALE**

<b>DATE:</b> 06-16-06	<b>ORDER No.</b> 03-77720	<b>DRAWING:</b> 2091-SS-41	<b>BY:</b> WJR
<b>FOR:</b> SOUTH FLORIDA WATER MANAGEMENT DISTRICT		<b>FB No.</b> 2567	<b>SHEET:</b> 2 OF 8



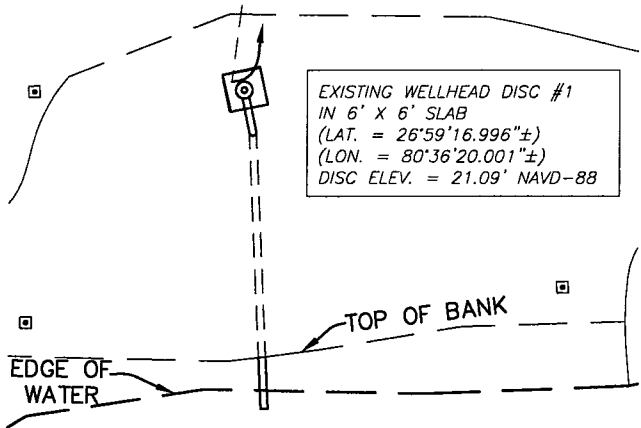
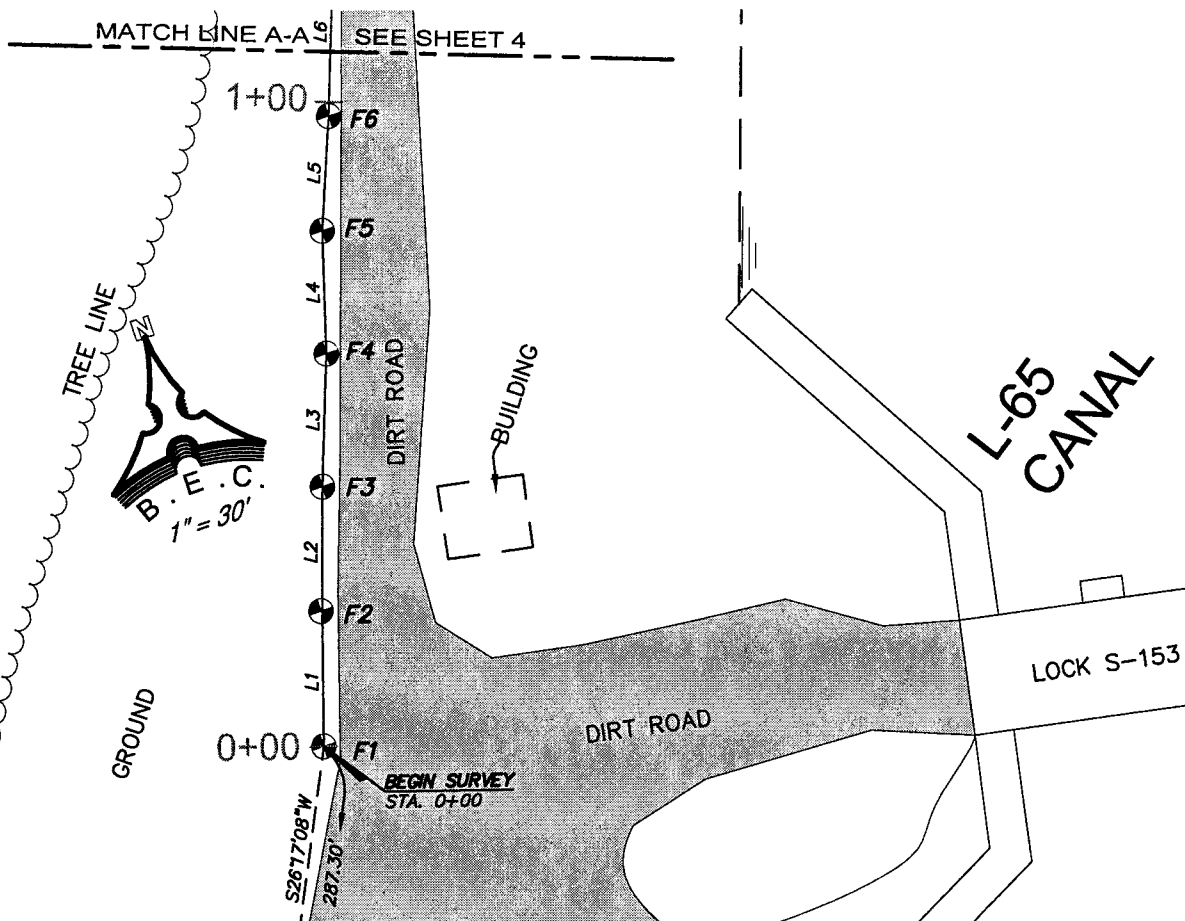
**BISCAYNE ENGINEERING COMPANY, INC.**  
 Consulting Engineers • Planners • Surveyors

MIAMI  
 529 WEST FLAGLER STREET  
 FLORIDA, 33130

PH: (305) 324-7671  
 FAX: (305) 324-1700

WEB SITE: [www.biscayneengineering.com](http://www.biscayneengineering.com)  
 E-MAIL: [info@biscayneengineering.com](mailto:info@biscayneengineering.com)

**TOPOGRAPHIC SURVEY**  
**PORT MAYACA SEISMIC SURVEY SITE**  
**IN SECTION 14-40-37, MARTIN COUNTY, FL.**



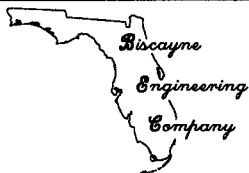
GRAPHIC SCALE



( IN FEET )  
 1 inch = 30 ft.

**ST. LUCIE CANAL**

<b>DATE:</b> 06-16-06	<b>ORDER No.</b> 03-77720	<b>DRAWING:</b> 2091-SS-41	<b>BY:</b> WJR
<b>FOR:</b> SOUTH FLORIDA WATER MANAGEMENT DISTRICT		<b>FB No.</b> 2567	<b>SHEET:</b> 3 OF 8



**BISCAYNE ENGINEERING COMPANY, INC.**

Consulting Engineers • Planners • Surveyors

MIAMI  
 529 WEST FLAGLER STREET  
 FLORIDA, 33130

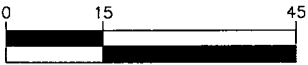
PH: (305) 324-7671  
 FAX: (305) 324-1700

WEB SITE: [www.biscoayneengineering.com](http://www.biscoayneengineering.com)  
 E-MAIL: [info@biscoayneengineering.com](mailto:info@biscoayneengineering.com)

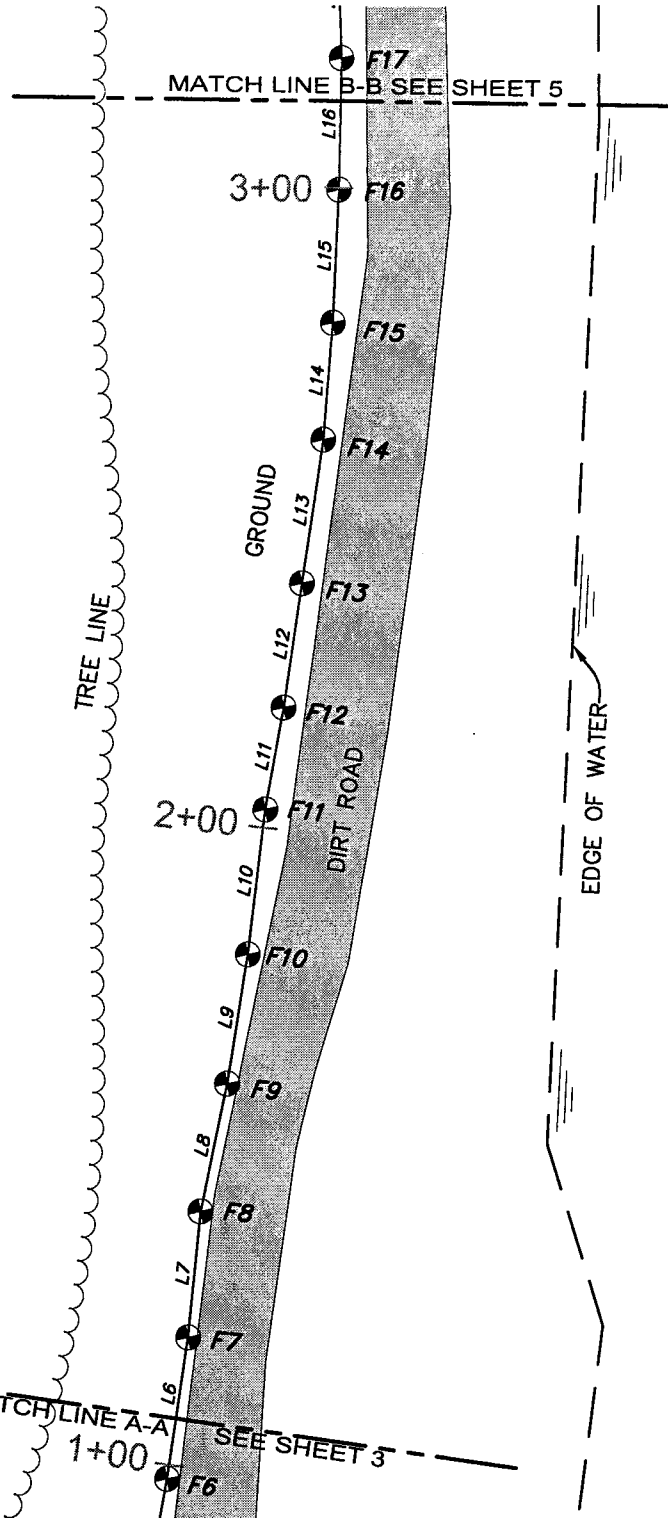
**TOPOGRAPHIC SURVEY**  
**PORT MAYACA SEISMIC SURVEY SITE**  
**IN SECTION 14-40-37, MARTIN COUNTY, FL.**



GRAPHIC SCALE



( IN FEET )  
 1 inch = 30 ft.



L-65 CANAL

**DATE:** 06-16-06    **ORDER No.** 03-77720    **DRAWING:** 2091-SS-41    **BY:** WJR

**FOR:** SOUTH FLORIDA WATER MANAGEMENT DISTRICT    **FB No.** 2567    **SHEET:** 4 OF 8



**BISCAYNE ENGINEERING COMPANY, INC.**

Consulting Engineers • Planners • Surveyors

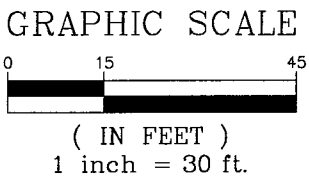
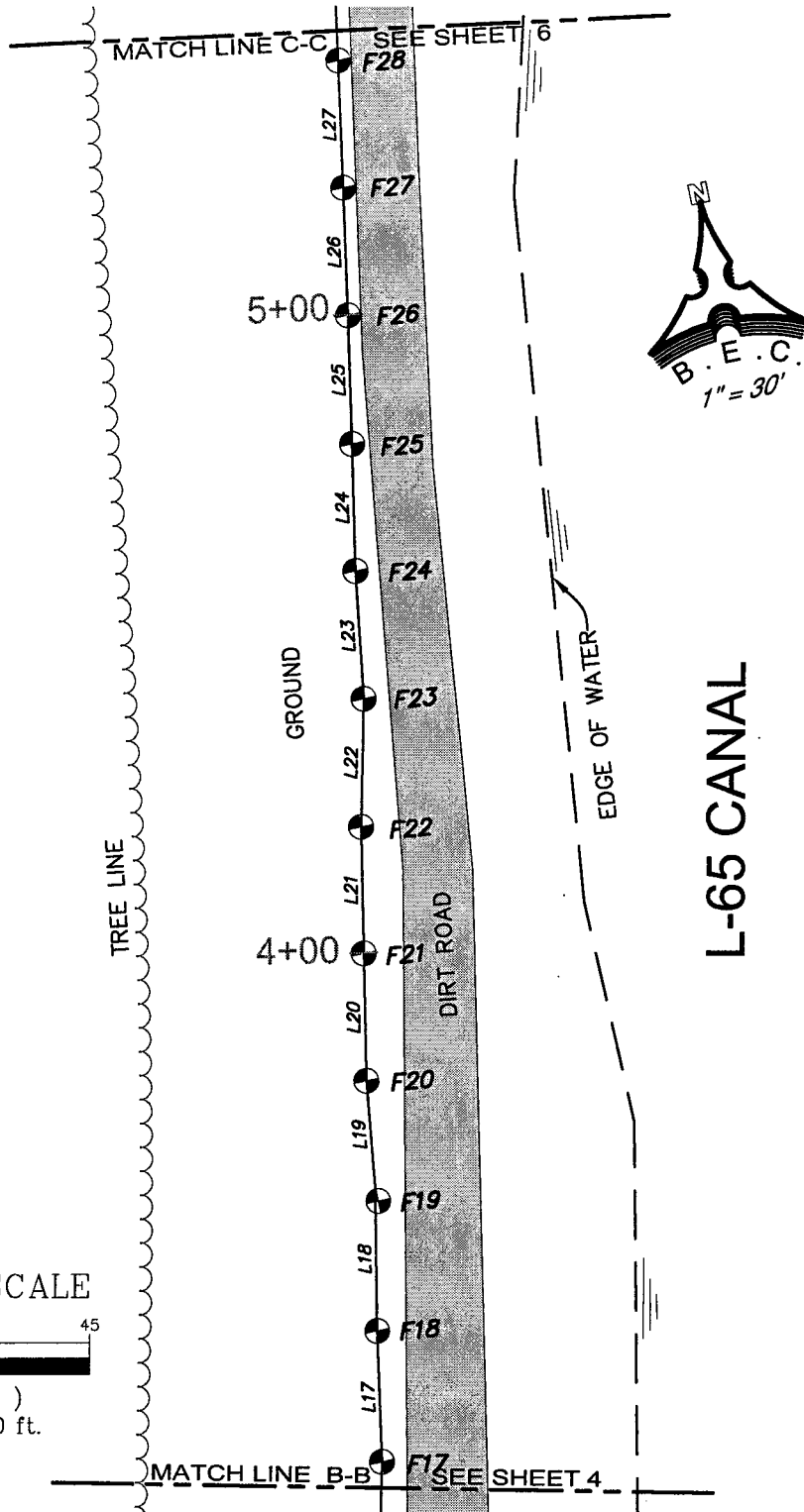
MIAMI

529 WEST FLAGLER STREET  
 FLORIDA, 33130

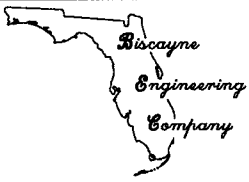
PH: (305) 324-7671  
 FAX: (305) 324-1700

WEB SITE: [www.biscayneengineering.com](http://www.biscayneengineering.com)  
 E-MAIL: [info@biscayneengineering.com](mailto:info@biscayneengineering.com)

**TOPOGRAPHIC SURVEY**  
**PORT MAYACA SEISMIC SURVEY SITE**  
**IN SECTION 14-40-37, MARTIN COUNTY, FL.**



<b>DATE:</b> 06-16-06	<b>ORDER No.</b> 03-77720	<b>DRAWING:</b> 2091-SS-41	<b>BY:</b> WJR
<b>FOR:</b> SOUTH FLORIDA WATER MANAGEMENT DISTRICT		<b>FB No.</b> 2567	<b>SHEET:</b> 5 OF 8



**BISCAYNE ENGINEERING COMPANY, INC.**

Consulting Engineers • Planners • Surveyors

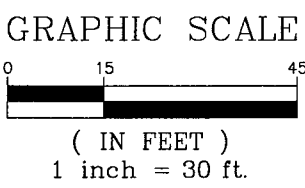
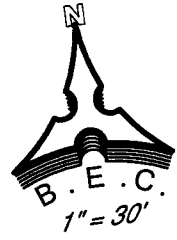
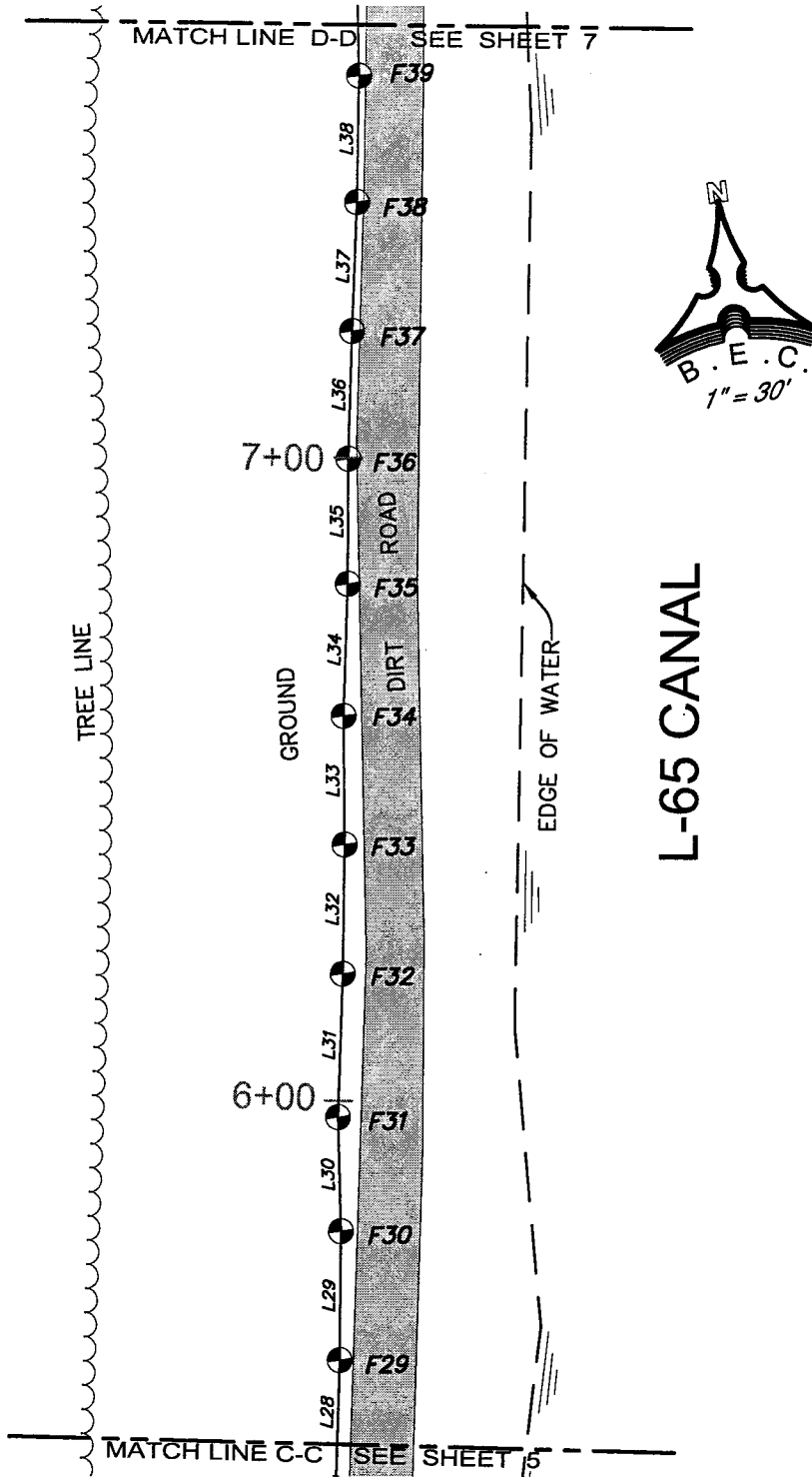
MIAMI  
 529 WEST FLAGLER STREET  
 FLORIDA, 33130

PH: (305) 324-7671  
 FAX: (305) 324-1700

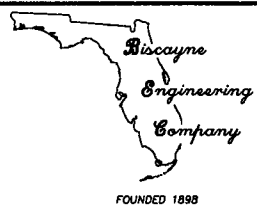
WEB SITE: [www.biscoyneengineering.com](http://www.biscoyneengineering.com)  
 E-MAIL: [info@biscoyneengineering.com](mailto:info@biscoyneengineering.com)

FOUNDED 1898

**TOPOGRAPHIC SURVEY**  
**PORT MAYACA SEISMIC SURVEY SITE**  
**IN SECTION 14-40-37, MARTIN COUNTY, FL.**



<b>DATE:</b> 06-16-06	<b>ORDER No.</b> 03-77720	<b>DRAWING:</b> 2091-SS-41	<b>BY:</b> WJR
<b>FOR:</b> SOUTH FLORIDA WATER MANAGEMENT DISTRICT		<b>FB No.</b> 2567	<b>SHEET:</b> 6 OF 8



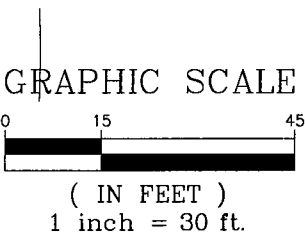
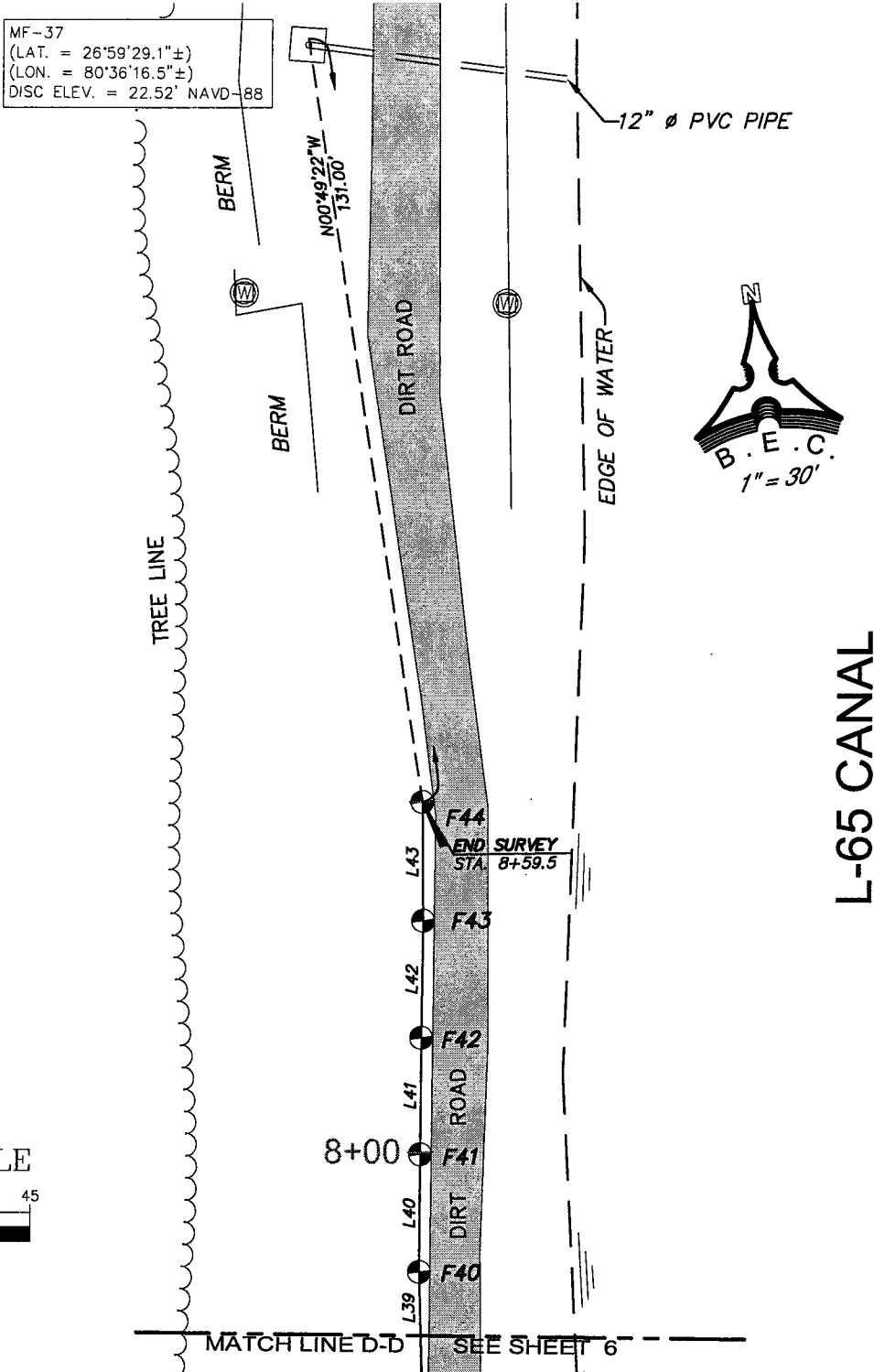
**BISCAYNE ENGINEERING COMPANY, INC.**  
 Consulting Engineers • Planners • Surveyors

MIAMI  
 529 WEST FLAGLER STREET  
 FLORIDA, 33130

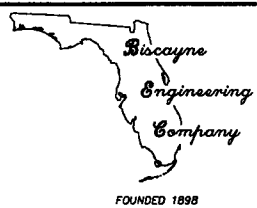
PH: (305) 324-7671  
 FAX: (305) 324-1700

WEB SITE: [www.biscoyneengineering.com](http://www.biscoyneengineering.com)  
 E-MAIL: [info@biscoyneengineering.com](mailto:info@biscoyneengineering.com)

**TOPOGRAPHIC SURVEY**  
**PORT MAYACA SEISMIC SURVEY SITE**  
**IN SECTION 14-40-37, MARTIN COUNTY, FL.**



<b>DATE:</b> 06-16-06	<b>ORDER No.</b> 03-77720	<b>DRAWING:</b> 2091-SS-41	<b>BY:</b> WJR
<b>FOR:</b> SOUTH FLORIDA WATER MANAGEMENT DISTRICT		<b>FB No.</b> 2567	<b>SHEET:</b> 7 OF 8



**BISCAYNE ENGINEERING COMPANY, INC.**

Consulting Engineers • Planners • Surveyors

MIAMI  
529 WEST FLAGLER STREET  
FLORIDA, 33130

PH: (305) 324-7671  
FAX: (305) 324-1700

WEB SITE: [www.biscayneengineering.com](http://www.biscayneengineering.com)  
E-MAIL: [info@biscayneengineering.com](mailto:info@biscayneengineering.com)

# TOPOGRAPHIC SURVEY

## PORT MAYACA SEISMIC SURVEY SITE

### IN SECTION 14-40-37, MARTIN COUNTY, FL.

LINE TABLE

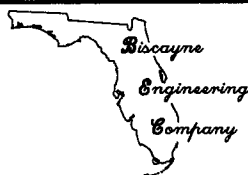
LINE	LENGTH (')	BEARING
L1	20.00	N18°03'29"E
L2	20.31	N18°43'58"E
L3	20.64	N20°22'42"E
L4	19.04	N16°42'08"E
L5	17.83	N21°52'14"E
L6	22.11	N20°20'58"E
L7	19.66	N17°25'20"E
L8	20.25	N23°34'12"E
L9	20.34	N20°53'45"E
L10	22.66	N18°40'41"E
L11	16.05	N21°58'26"E
L12	19.49	N20°12'05"E
L13	22.53	N20°17'50"E
L14	18.16	N16°30'02"E
L15	20.65	N14°23'17"E
L16	20.41	N12°56'44"E
L17	20.47	N09°38'20"E
L18	22.68	N10°56'47"E
L19	16.60	N06°59'35"E
L20	20.01	N10°36'00"E
L21	19.85	N10°32'43"E
L22	20.06	N12°52'11"E
L23	20.07	N07°58'48"E
L24	19.89	N10°11'08"E
L25	20.15	N09°50'02"E
L26	19.97	N09°34'27"E
L27	19.94	N09°20'56"E
L28	19.87	N09°23'39"E
L29	20.03	N08°11'54"E
L30	17.72	N06°11'02"E
L31	22.35	N09°33'52"E
L32	20.09	N08°28'07"E
L33	20.02	N07°08'53"E
L34	20.52	N09°24'38"E
L35	19.44	N07°51'10"E
L36	19.83	N09°10'25"E
L37	20.00	N09°49'47"E
L38	19.64	N08°30'35"E
L39	20.39	N06°20'27"E
L40	19.94	N08°14'04"E
L41	19.77	N08°17'15"E
L42	19.89	N08°42'31"E
L43	20.16	N07°21'03"E

FLAG TABLE

FLAG	ELEV(')	NORTHING	EASTING	LATITUDE	LONGITUDE
1	30.82	965287.38	784746.79	26°59'19.5426"	-80°36'18.5860"
2	30.75	965306.40	784752.99	26°59'19.7308"	-80°36'18.5168"
3	31.03	965325.64	784759.51	26°59'19.9211"	-80°36'18.4440"
4	30.36	965344.98	784766.70	26°59'20.1125"	-80°36'18.3639"
5	29.17	965363.22	784772.17	26°59'20.2929"	-80°36'18.3028"
6	27.97	965379.77	784778.81	26°59'20.4566"	-80°36'18.2288"
7	26.49	965400.50	784786.50	26°59'20.6617"	-80°36'18.1430"
8	25.48	965419.26	784792.39	26°59'20.8473"	-80°36'18.0773"
9	24.52	965437.82	784800.49	26°59'21.0308"	-80°36'17.9872"
10	23.48	965456.82	784807.74	26°59'21.2188"	-80°36'17.9063"
11	22.40	965478.29	784815.00	26°59'21.4311"	-80°36'17.8254"
12	22.11	965493.17	784821.00	26°59'21.5783"	-80°36'17.7585"
13	21.80	965511.46	784827.73	26°59'21.7593"	-80°36'17.6834"
14	21.49	965532.58	784835.55	26°59'21.9682"	-80°36'17.5963"
15	21.00	965550.00	784840.70	26°59'22.1406"	-80°36'17.5387"
16	20.77	965570.01	784845.84	26°59'22.3385"	-80°36'17.4813"
17	20.84	965589.90	784850.41	26°59'22.5354"	-80°36'17.4300"
18	21.01	965610.08	784853.84	26°59'22.7352"	-80°36'17.3914"
19	20.93	965632.35	784858.14	26°59'22.9556"	-80°36'17.3430"
20	20.88	965648.83	784860.17	26°59'23.1187"	-80°36'17.3201"
21	20.98	965668.49	784863.84	26°59'23.3133"	-80°36'17.2788"
22	21.00	965688.01	784867.48	26°59'23.5065"	-80°36'17.2379"
23	21.06	965707.56	784871.95	26°59'23.7000"	-80°36'17.1879"
24	20.78	965727.44	784874.73	26°59'23.8967"	-80°36'17.1564"
25	21.02	965747.01	784878.25	26°59'24.0905"	-80°36'17.1168"
26	21.06	965766.87	784881.69	26°59'24.2870"	-80°36'17.0781"
27	20.77	965786.57	784885.01	26°59'24.4820"	-80°36'17.0407"
28	20.74	965806.25	784888.25	26°59'24.6768"	-80°36'17.0042"
29	20.88	965825.85	784891.50	26°59'24.8708"	-80°36'16.9677"
30	21.22	965845.68	784894.35	26°59'25.0671"	-80°36'16.9354"
31	21.29	965863.30	784896.26	26°59'25.2415"	-80°36'16.9137"
32	21.31	965885.33	784899.97	26°59'25.4596"	-80°36'16.8719"
33	21.69	965905.20	784902.93	26°59'25.6563"	-80°36'16.8385"
34	21.47	965925.06	784905.42	26°59'25.8529"	-80°36'16.8103"
35	21.28	965945.31	784908.78	26°59'26.0533"	-80°36'16.7725"
36	21.06	965964.56	784911.44	26°59'26.2439"	-80°36'16.7424"
37	21.07	965984.14	784914.60	26°59'26.4377"	-80°36'16.7068"
38	21.15	966003.85	784918.01	26°59'26.6327"	-80°36'16.6684"
39	21.00	966023.27	784920.92	26°59'26.8250"	-80°36'16.6356"
40	20.87	966043.54	784923.17	26°59'27.0256"	-80°36'16.6100"
41	20.73	966063.27	784926.03	26°59'27.2210"	-80°36'16.5777"
42	20.88	966082.84	784928.88	26°59'27.4147"	-80°36'16.5455"
43	20.87	966102.50	784931.89	26°59'27.6093"	-80°36'16.5116"
44	21.26	966122.50	784934.47	26°59'27.8073"	-80°36'16.4824"

**DATE:** 06-16-06    **ORDER No.** 03-77720    **DRAWING:** 2091-SS-41    **BY:** WJR

**FOR:** SOUTH FLORIDA WATER MANAGEMENT DISTRICT    **FB No.** 2567    **SHEET:** 8 OF 8



## BISCAYNE ENGINEERING COMPANY, INC.

Consulting Engineers • Planners • Surveyors

MIAMI  
529 WEST FLAGLER STREET  
FLORIDA, 33130

PH: (305) 324-7671  
FAX: (305) 324-1700

WEB SITE: [www.biscayneengineering.com](http://www.biscayneengineering.com)  
E-MAIL: [info@biscayneengineering.com](mailto:info@biscayneengineering.com)