

ELAN*

Integrated Log Analysis

Optimized Mineral + Pore Volume Model

COMPANY: ALL WEBB'S ENTERPRISES, INC.

WELL: MF-40

FIELD: C-23 CANAL

State: FLORIDA

COUNTRY:

*Elemental Log Analysis, Mark of Schlumberger

Date Processed: Oct-2006 Date Logged: 6-Sep-2005

Job Number: Processed at: SWS Sacramento

Well Location: C-23 Canal

Latitude: Longitude:

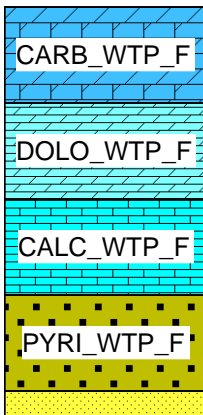
Elevations: KB: 10.668m DF: 10.0584m GL: 9.144m

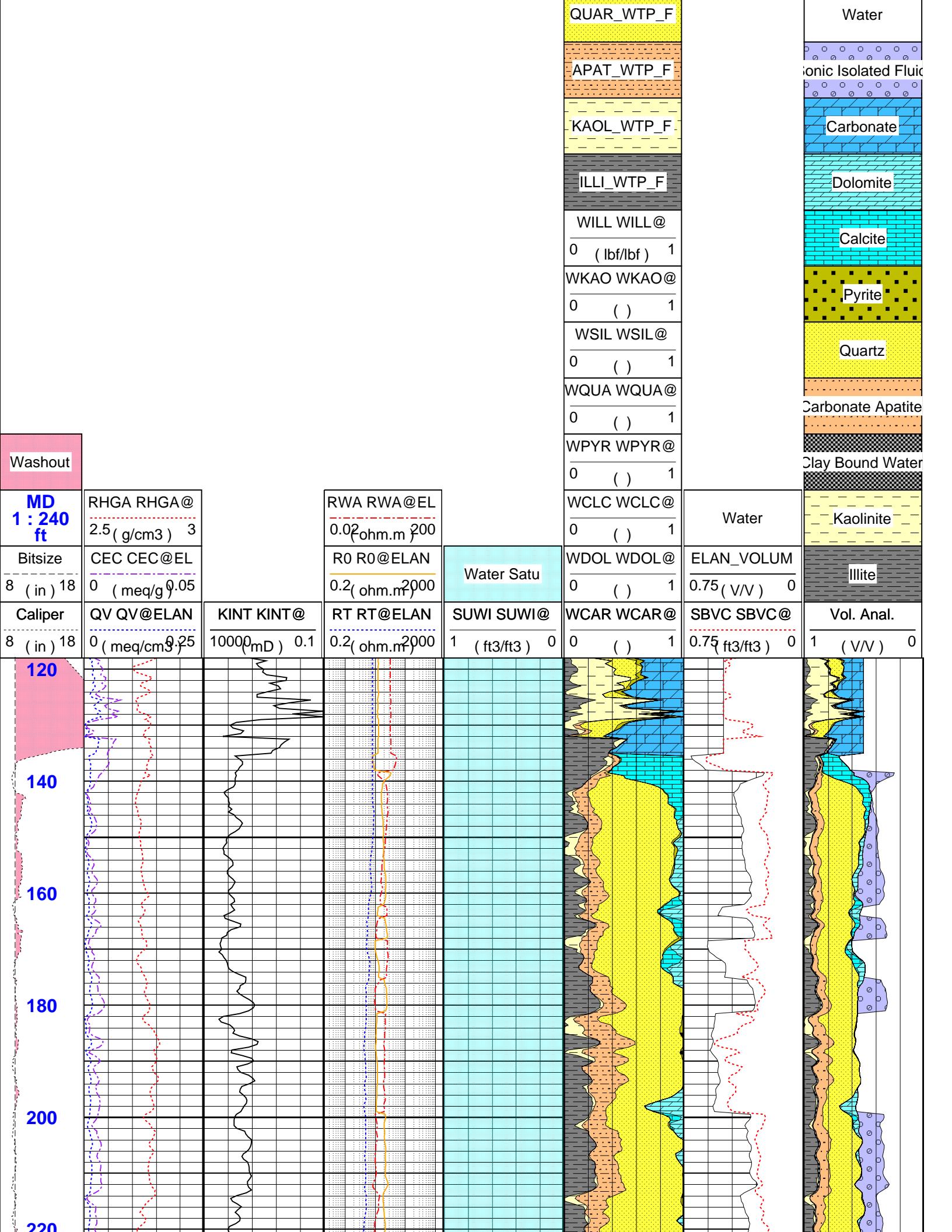
Processing does not correct for effects of borehole conditions on logs

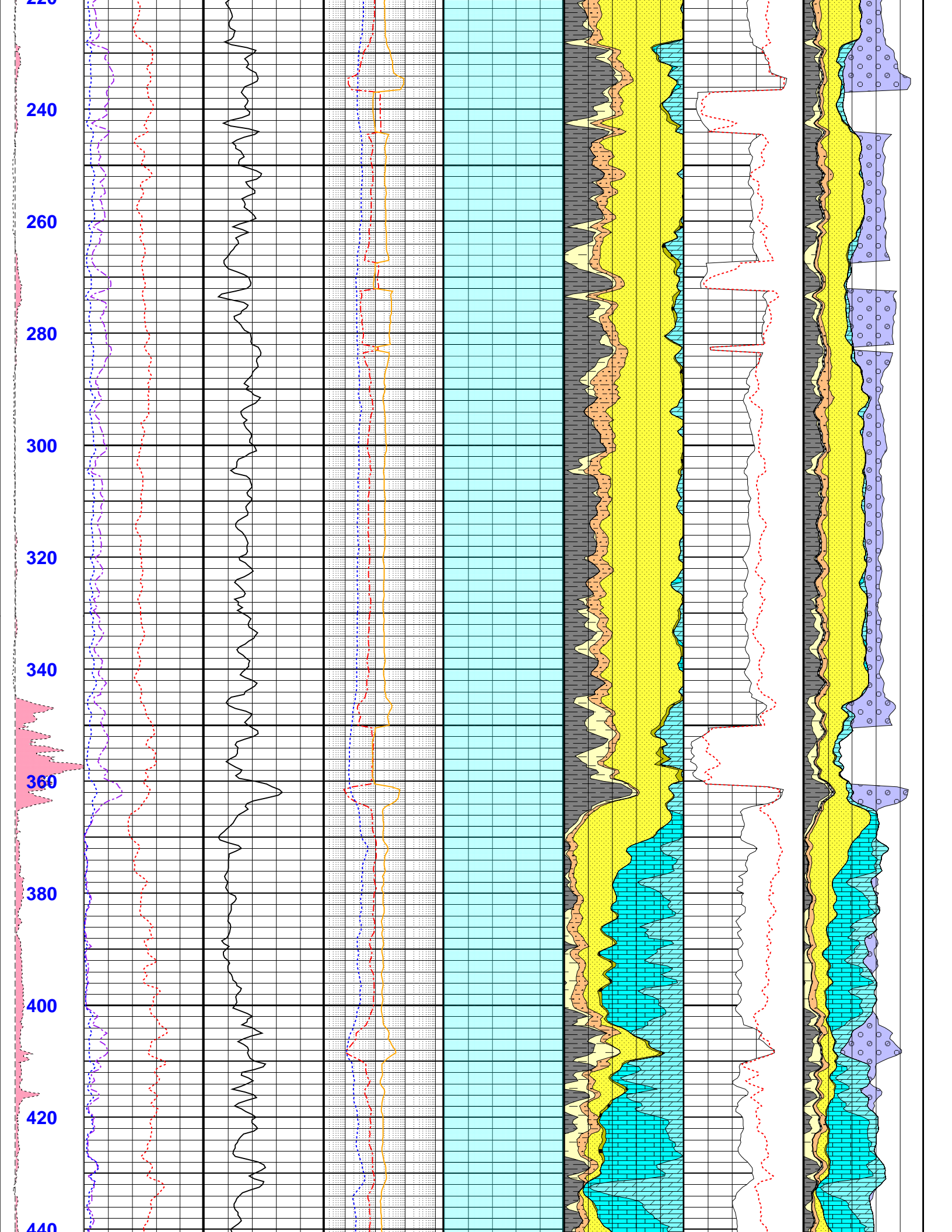
FOLD HERE The well name, location and borehole reference data were furnished by the customer.

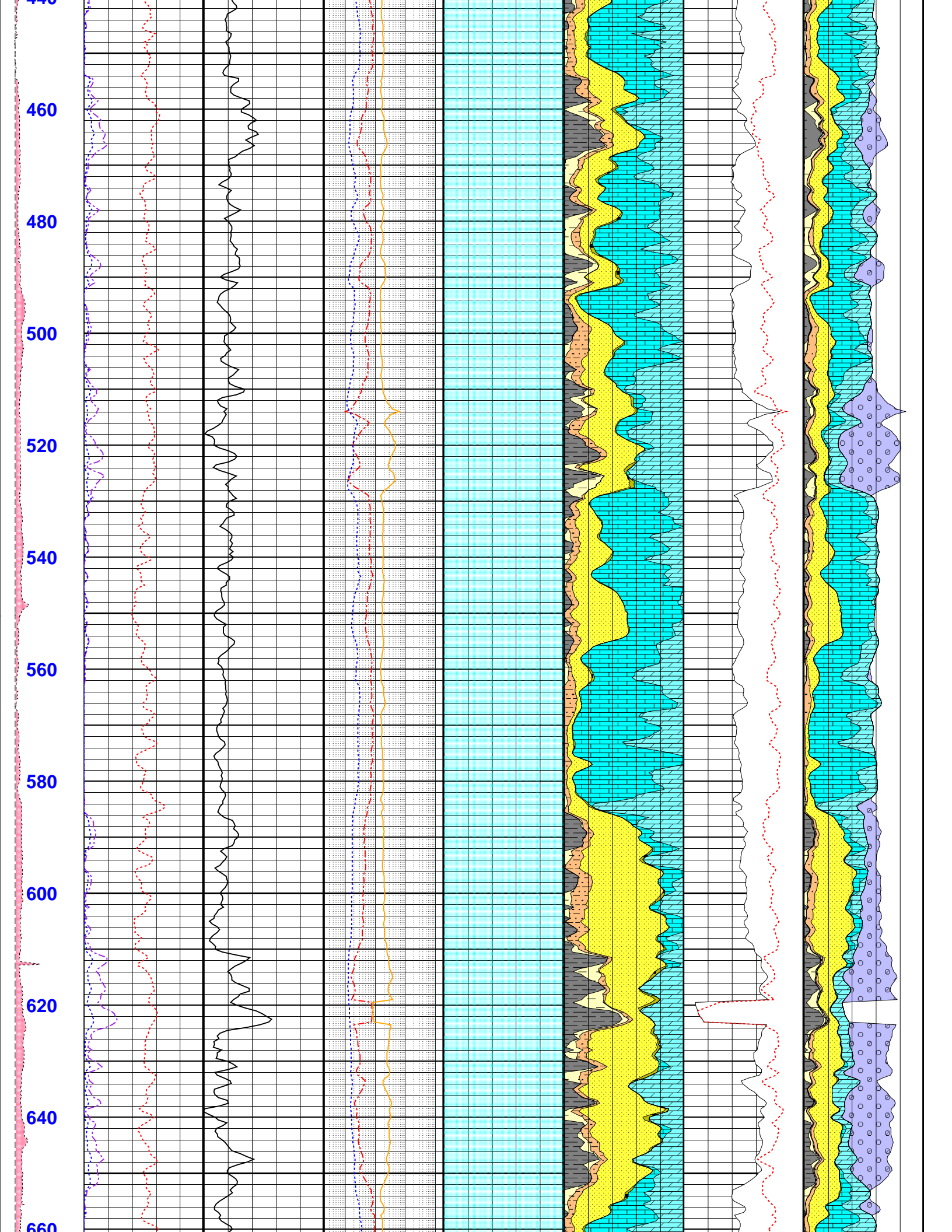
All interpretations are opinions based on inferences from electrical or other measurements and we cannot, and do not guarantee the accuracy or correctness of any interpretation, and we shall not, except in the case of gross or willful negligence on our part, be liable or responsible for any loss, costs, damages or expenses incurred or sustained by anyone resulting from any interpretations made by any of our officers, agents or employees. These interpretations are also subject to Clause 4 of our General Terms and Conditions as set out in our current Price Schedule.

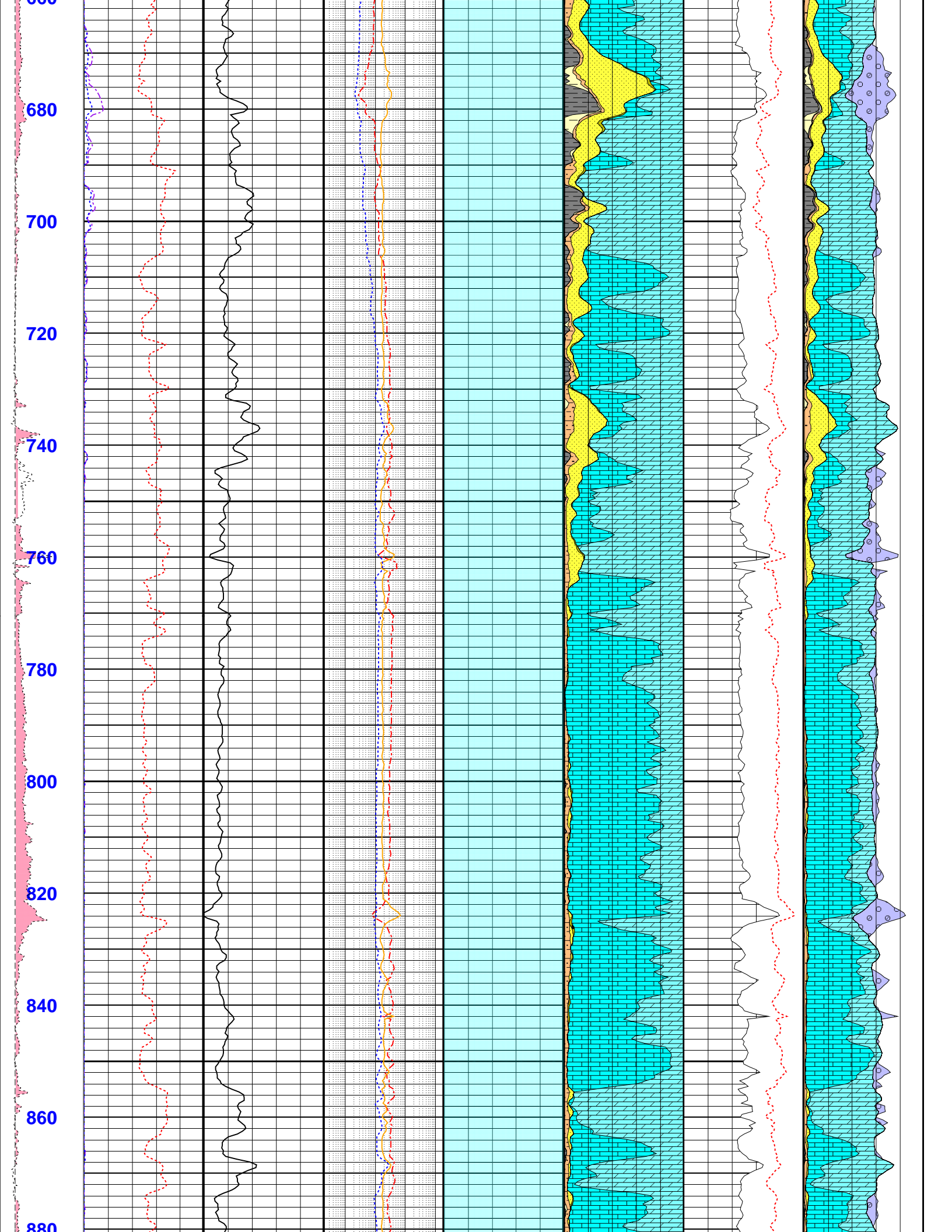
MF-40 [Fun_1]

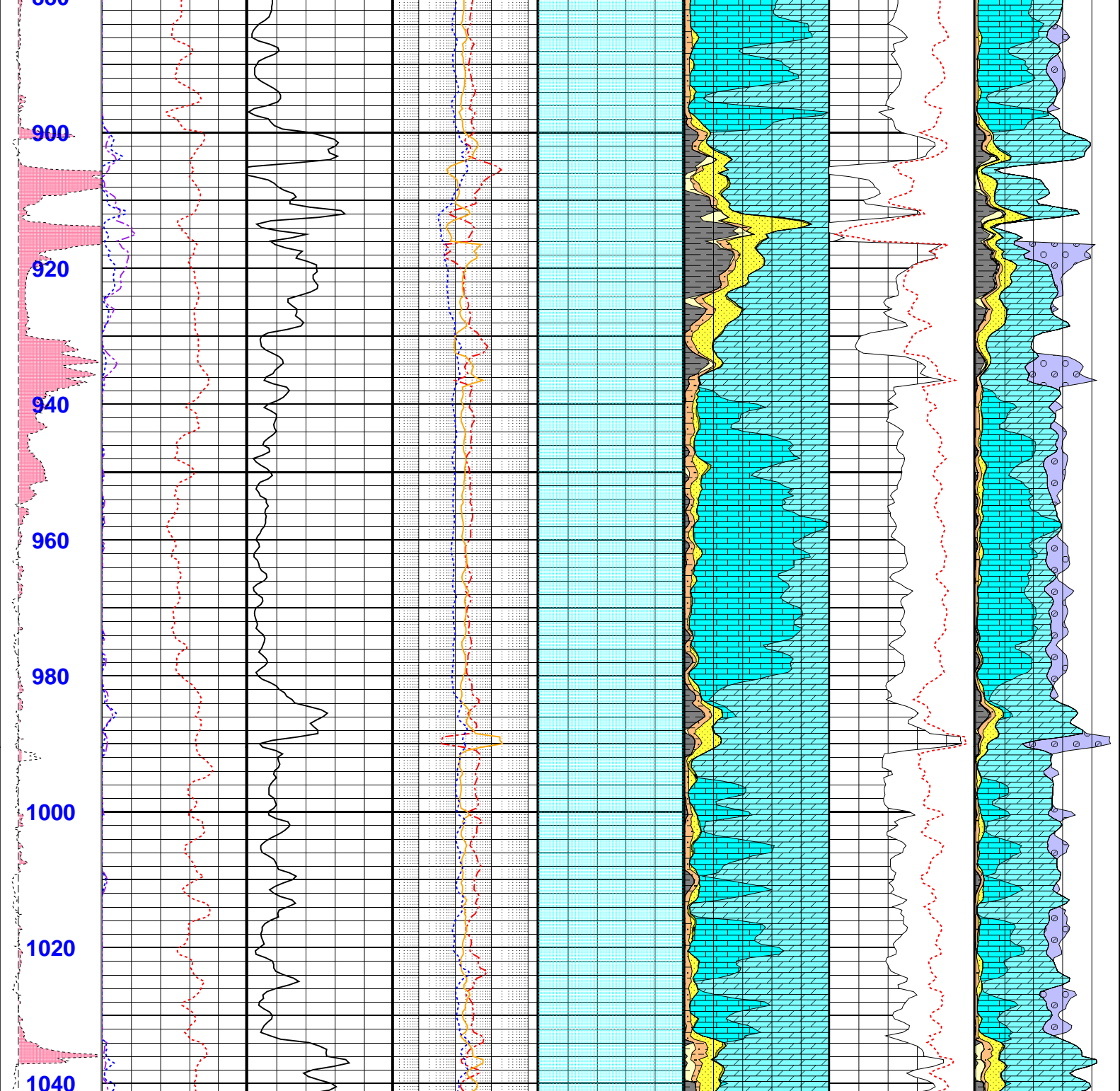












| | | | | | | | |
|----------------------|---|------------------------------|--------------------------------|-----------------------------|-----------------------|--------------------------------|----------------------|
| Caliper 8 (in) 18 | QV QV@ELAN 0 (meq/cm ³) 0.25 | KINT KINT@ 10000 (mD) 0.1 | RT RT@ELAN 0.2 (ohm.m) 2000 | SUWI SUWI@ 1 (ft3/ft3) 0 | WCAR WCAR@ 0 () 1 | SBVC SBVC@ 0.75 (ft3/ft3) 0 | Water |
| Bitsize 8 (in) 18 | CEC CEC@EL 0 (meq/g) 0.05 | | R0 R0@ELAN 0.2 (ohm.m) 2000 | Water Satu | WDOL WDOL@ 0 () 1 | Water | Ionic Isolated Fluid |
| MD 1 : 240 ft | RHGA RHGA@ 2.5 (g/cm ³) 3 | | RWA RWA@EL 0.02 (ohm.m) 200 | | WCLC WCLC@ 0 () 1 | ELAN_VOLUM 0.75 (V/V) 0 | Carbonate |
| Washout | | | | | WPYR WPYR@ 0 () 1 | | Dolomite |
| | | | | | WQUA WQUA@ 0 () 1 | | Calcite |
| | | | | | WSIL WSIL@ 0 () 1 | | Pyrite |

| |
|-----------------|
| () |
| WKAO WKAO@ |
| 0 () 1 |
| WILL WILL@ |
| 0 (lbf/lbf) 1 |
| ILLI_WTP_F |
| KAOL_WTP_F |
| APAT_WTP_F |
| QUAR_WTP_F |
| PYRI_WTP_F |
| CALC_WTP_F |
| DOLO_WTP_F |
| CARB_WTP_F |

| |
|-------------------|
| Quartz |
| Carbonate Apatite |
| Clay Bound Water |
| Kaolinite |
| Illite |
| Vol. Anal. |
| 1 (V/V) 0 |

MF-40 [Fun_1]