

Site Name MHGW		Date of Field Work 08-nov-12
Party Chief Kett	Field Book Name/Number Misc 6P	Page Number 9
Site Benchmark Name MHGW	Benchmark Elevation (NAVD88) 18.778	Corpscon 6.0.1 Datum Offset to NGVD29 1.319
Reference Elevation (NAVD 88) 20.948 (Chisel mark on elbow)		Existing Tag Elevation (Datum) None
Latitude : 26° 49' 18.00"		Longitude 81° 06' 22.66"

Notes: **The reference elevation is the chisel mark on the elbow.**
The brass tag references the "X" mark and is the tagged in NGVD29.

Photographs

Overall Site



Looking Northwesterly

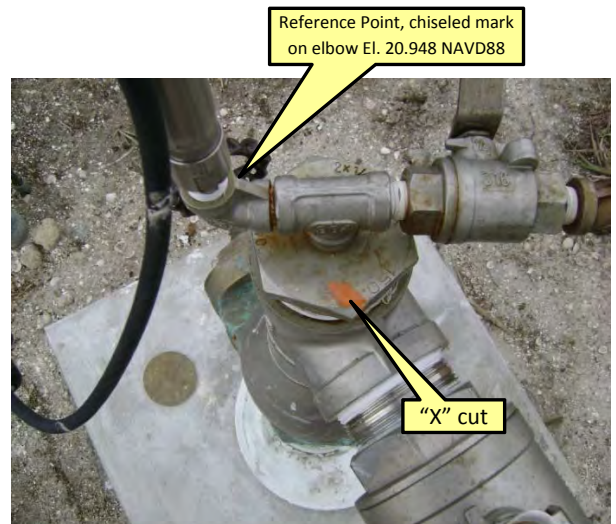
Benchmark Close Up



MHGW Well



MHGW Well Close up

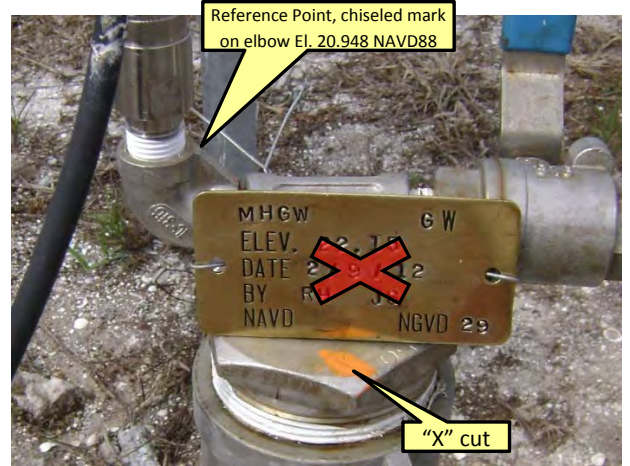


Brass Tag Close Up



20.807' NAVD88

Brass Tag + Reference Mark



Site Name MHGW		Date of Field Work 06-feb-12
Party Chief Hudson	Field Book Name/Number Misc 60	Page Number 5
Site Benchmark Name MHGW	Benchmark Elevation (NAVD88) 18.778	Corpscon 6.0.1 Datum Offset to NGVD29 1.319
Reference Elevation (NAVD 88) 20.808, the "X" cut stamped into top of nut cap of well.		Existing Tag Elevation (Datum) None
Latitude : 26° 49' 18.00"		Longitude 81° 06' 22.66"

Notes: **Tagged in NGVD29**

Photographs

Overall Site



Looking Northwesterly

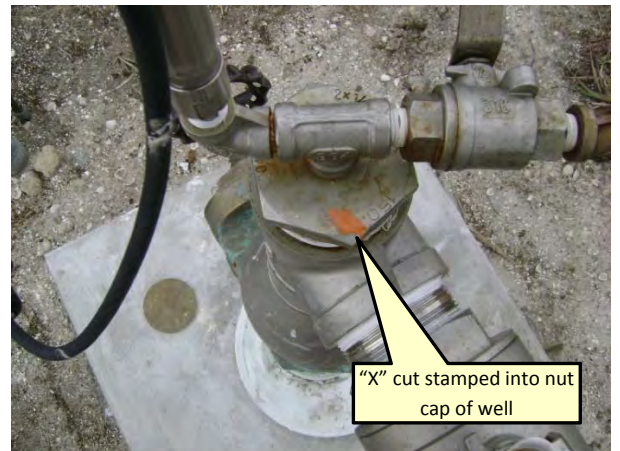
Benchmark Close Up



MHGW Well



MHGW Well Close up



Brass Tag Close Up



20.807' NAVD88

Brass Tag + Reference Mark



SEL. 14 TDP. 42 ZUE 32

LEVELS TO ESTABLISH A BENCH MARK AT MORE HAVEN WELL "MHGW"

REF'S 1. Bm DESL, SHEETS

FILE: MHGW

RT.	TIME	ELEV	Bm
I	1:30		17.81 [88]
II	2:30	17.742	17.76

END LEVELS BETWEEN NOS BENCH MARKS

FILE: MH1

LEVELS CONT'D TO SITE

I			17.76
II		13.976	13.976
21		17.76	17.76

TRANSFER EL FR PL TO REF EL & Bm

MH 2

1			13.976
2		22.148' NGVD29	20.808
3			18.778'
4			13.975

END MHGW

LEVEL: TOPGON DL-500
BAR CODE 2.0

T. HUDSON
A. GIAMMARCO
B. STRICKLAND

NOTE: ALL ELEV'S ARE NAVD 88. THE REF ELEV ON WELL WAS TAGGED WITH NVD 29 EL: 22.15' BY ADDING AN OFFSET OF 1.34', PROVIDED VIA PHONE BY H. EHMKE.

COMMENTS

Bm V529 PER DESL.

Bm W529 PER DESL.

ERROR 0.010'

2/9/12 T. HUDSON
B. STRICKLAND

Bm W529

PL/DISK SET IN E. EDGE OF PAVE PAVES & OF FOX LAKE

Bm D529

ERROR 0.00'

PL ABOVE

"X" STAMPED INTO TOP OF NUT CAP OF WALL

SEWMO ALUM CAP SET IN THE NE COR OF CONC. WELL PAD.

PL ABOVE

ERROR 0.001'

9

MISC FB 6-P

11/8/12

SEC 14 Twp 42 RGE 32

MHGW SITE

MEASURE UP FROM ON-SITE TBM TO
ESTABLISH NEW TBM ON TOP OF THE 1/4"
STAINLESS STEEL 90° ELBOW.

- REFS
1. PRINT OUT OF E-MAIL STRING BETWEEN OTHERS.
 2. REFERENCE ELEV. ON TBM ESTABLISHED
IN MISC FB # 6-0 PG. 5

X-MARK ON FLANGE = 22.15 20.808 NAVD88

MEASURE UP ± 0.14

CHISEL MARK ON ELBOW = 22.29 20.948' NAVD88

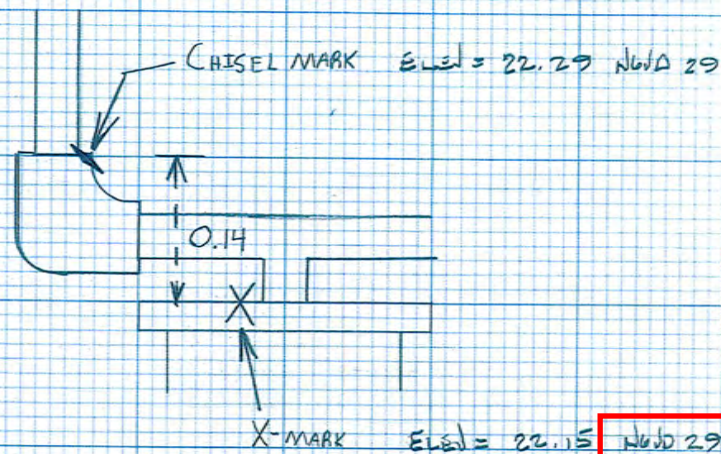
MISC FB 6-P

11/8/12

9

KETT
HUDSON
GRAMMARCO

~~~~~ LOOKING WEST ~~~~~





# SOUTH FLORIDA WATER MANAGEMENT DISTRICT

Rev. 8/07

|                                                                   |                                |
|-------------------------------------------------------------------|--------------------------------|
| DESIGNATION: <b>MHGW</b>                                          | PROJECT:                       |
| ESTABLISHED BY:<br><b>SOUTH FLORIDA WATER MANAGEMENT DISTRICT</b> | SURVEYOR: <b>RONNIE HUDSON</b> |
| RECOVERED BY:                                                     | DATE: <b>06-feb-12</b>         |

**GEOGRAPHIC POSITION**

|                                                                        |                                        |                                  |                                                         |
|------------------------------------------------------------------------|----------------------------------------|----------------------------------|---------------------------------------------------------|
| <b>SECTION 14</b>                                                      | <b>TOWNSHIP 42 SOUTH</b>               | <b>RANGE 32 EAST</b>             |                                                         |
| <b>COUNTY: GLADES</b>                                                  | <b>NAME OF QUADRANGLE: MOORE HAVEN</b> |                                  |                                                         |
|                                                                        | <b>GEOGRAPHIC INDEX OF QUAD: 2309</b>  |                                  |                                                         |
| HORIZONTAL DATUM: 1927    1983    Other    (circle one)    ZONE E or W |                                        |                                  |                                                         |
| VERTICAL DATUM: MSL    1929    (1988)    Other    (circle one)         |                                        |                                  |                                                         |
| VERTICAL ACCURACY: 1    2    (3)                                       |                                        |                                  |                                                         |
| STATE PLANE COORDINATE                                                 | X                                      | Y                                | NAVD 88 EL. <b>18.778</b><br>NGVD 29 EL. <b>20.121'</b> |
| <b>CORPSCON 6.0.1 CONVERSION FACTOR (NAVD88 TO NGVD29): 1.319</b>      |                                        |                                  |                                                         |
| <b>LATITUDE: 26° 49' 18.0"</b>                                         |                                        | <b>LONGITUDE: 81° 06' 22.66"</b> |                                                         |

**RECOVERY DESCRIPTION**

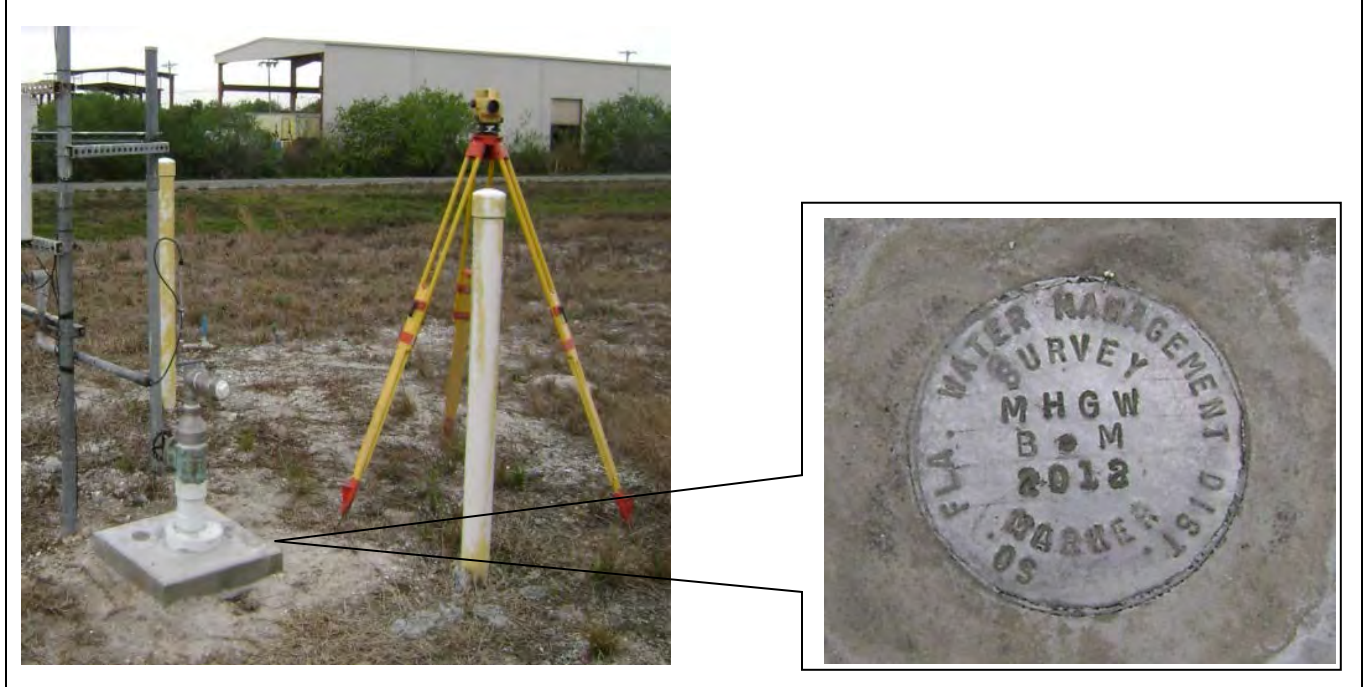
**Stamping: MHGW B.M 2012**

To Reach:  
 From the junction of United States Highway (U.S. 27) and State Road 78 (S.R. 78), West of Moore Haven, Fl., Go East on U.S. 27, in the southbound lane, 1.0 mile to the junction of West Avenue SW on the right; Turn Right onto West Ave SW and go South 1.0 mile to a SFWMD gate on the left; Continue through gate, following the rock road for 500 feet more or less to an Easterly curve in road; Leaving the road and continue North, over grass, to the visible "MHGW well site" and station location.  
 Mark is a standard South Florida Water Management District (SFWMD) aluminum disk grouted into the Northeast corner of the well concrete base and stamped "MHGW B.M 2012".

**NGS SOURCE BENCHMARK: V529 (AJ7351) and W529 (AJ7352)**

**FIELD BOOK Misc 60    PAGE 5**

**PICTURES**



| From the "ngvd29.txt" file provided by NGS for the CERP Geodetic Vertical Control Project. |      |                                                                              |             |              |           |       |
|--------------------------------------------------------------------------------------------|------|------------------------------------------------------------------------------|-------------|--------------|-----------|-------|
| Line/Part: L26218                                                                          |      | SSN+: mark floated, SSN*: mark constrained, SSN#: mark floated & constrained |             |              |           |       |
| Mark ID                                                                                    | SSN  | PID                                                                          | Designation | Geopotential | Elevation | Codes |
| 1292                                                                                       | 1819 | AJ7351                                                                       | V 529       | 5.7195       | 5.8363    |       |
| 1293                                                                                       | 1820 | AJ7352                                                                       | W 529       | 5.7068       | 5.8232    |       |

## The NGS Data Sheet

See file [dsdata.txt](#) for more information about the datasheet.

```

PROGRAM = datasheet95, VERSION = 8.8
1      National Geodetic Survey,  Retrieval Date = JANUARY 13, 2016
AJ7351 *****
AJ7351 DESIGNATION - V 529
AJ7351 PID - AJ7351
AJ7351 STATE/COUNTY- FL/GLADES
AJ7351 COUNTRY - US
AJ7351 USGS QUAD - MOORE HAVEN (1970)
AJ7351
AJ7351 *CURRENT SURVEY CONTROL
AJ7351
AJ7351* NAD 83(2011) POSITION- 26 50 01.87876(N) 081 07 11.26324(W) ADJUSTED
AJ7351* NAD 83(2011) ELLIP HT- -19.221 (meters) (06/27/12) ADJUSTED
AJ7351* NAD 83(2011) EPOCH - 2010.00
AJ7351* NAVD 88 ORTHO HEIGHT - 5.428 (meters) 17.81 (feet) ADJUSTED
AJ7351
AJ7351 NAD 83(2011) X - 879,163.031 (meters) COMP
AJ7351 NAD 83(2011) Y - -5,626,936.041 (meters) COMP
AJ7351 NAD 83(2011) Z - 2,861,792.079 (meters) COMP
AJ7351 LAPLACE CORR - -1.42 (seconds) DEFLEC12B
AJ7351 GEOID HEIGHT - -24.644 (meters) GEOID12B
AJ7351 DYNAMIC HEIGHT - 5.420 (meters) 17.78 (feet) COMP
AJ7351 MODELED GRAVITY - 979,119.6 (mgal) NAVD 88
AJ7351
AJ7351 VERT ORDER - FIRST CLASS II
AJ7351
AJ7351 Network accuracy estimates per FGDC Geospatial Positioning Accuracy
AJ7351 Standards:
AJ7351 FGDC (95% conf, cm) Standard deviation (cm) CorrNE
AJ7351 Horiz Ellip SD_N SD_E SD_h (unitless)
AJ7351 -----
AJ7351 NETWORK 2.75 4.12 1.15 1.10 2.10 0.09363451
AJ7351 -----
AJ7351 Click here for local accuracies and other accuracy information.
AJ7351
AJ7351
AJ7351.The horizontal coordinates were established by GPS observations
AJ7351.and adjusted by the National Geodetic Survey in June 2012.
AJ7351
AJ7351.NAD 83(2011) refers to NAD 83 coordinates where the reference
AJ7351.frame has been affixed to the stable North American tectonic plate. See
AJ7351.NA2011 for more information.
AJ7351
AJ7351.The horizontal coordinates are valid at the epoch date displayed above
AJ7351.which is a decimal equivalence of Year/Month/Day.
AJ7351
AJ7351.The orthometric height was determined by differential leveling and
AJ7351.adjusted by the NATIONAL GEODETIC SURVEY
AJ7351.in February 2002.
AJ7351
AJ7351.Significant digits in the geoid height do not necessarily reflect accuracy.

```



AJ7351.GEOID12B height accuracy estimate available [here](#).

AJ7351

AJ7351.The X, Y, and Z were computed from the position and the ellipsoidal ht.

AJ7351

AJ7351.The Laplace correction was computed from DEFLEC12B derived deflections.

AJ7351

AJ7351.The ellipsoidal height was determined by GPS observations

AJ7351.and is referenced to NAD 83.

AJ7351

AJ7351.The dynamic height is computed by dividing the NAVD 88

AJ7351.geopotential number by the normal gravity value computed on the

AJ7351.Geodetic Reference System of 1980 (GRS 80) ellipsoid at 45

AJ7351.degrees latitude (g = 980.6199 gals.).

AJ7351

AJ7351.The modeled gravity was interpolated from observed gravity values.

AJ7351

AJ7351. The following values were computed from the NAD 83(2011) position.

AJ7351

| AJ7351;         |   | North         | East        | Units | Scale Factor | Converg.   |
|-----------------|---|---------------|-------------|-------|--------------|------------|
| AJ7351;SPC FL E | - | 277,001.543   | 188,092.997 | MT    | 0.99994293   | -0 03 14.7 |
| AJ7351;SPC FL E | - | 908,795.90    | 617,101.77  | sFT   | 0.99994293   | -0 03 14.7 |
| AJ7351;UTM 17   | - | 2,968,039.013 | 488,097.060 | MT    | 0.99960175   | -0 03 14.7 |

AJ7351

AJ7351! - Elev Factor x Scale Factor = Combined Factor

AJ7351!SPC FL E - 1.00000302 x 0.99994293 = 0.99994595

AJ7351!UTM 17 - 1.00000302 x 0.99960175 = 0.99960477

AJ7351

AJ7351 SUPERSEDED SURVEY CONTROL

AJ7351

AJ7351 NAD 83(2007)- 26 50 01.87891(N) 081 07 11.26393(W) AD(2002.00) 0

AJ7351 ELLIP H (02/10/07) -19.202 (m) GP(2002.00)

AJ7351 NAD 83(1999)- 26 50 01.87921(N) 081 07 11.26420(W) AD( ) 1

AJ7351 ELLIP H (12/12/02) -19.204 (m) GP( ) 2 2

AJ7351 NAVD 88 (12/12/02) 5.43 (m) 17.8 (f) LEVELING 3

AJ7351

AJ7351.Superseded values are not recommended for survey control.

AJ7351

AJ7351.NGS no longer adjusts projects to the NAD 27 or NGVD 29 datums.

AJ7351.[See file dsdata.txt](#) to determine how the superseded data were derived.

AJ7351

AJ7351\_U.S. NATIONAL GRID SPATIAL ADDRESS: 17RMK8809768039(NAD 83)

AJ7351

AJ7351\_MARKER: DD = SURVEY DISK

AJ7351\_SETTING: 7 = SET IN TOP OF CONCRETE MONUMENT

AJ7351\_STAMPING: V 529 2001 CERP

AJ7351\_MARK LOGO: USE

AJ7351\_PROJECTION: RECESSED 15 CENTIMETERS

AJ7351\_MAGNETIC: O = OTHER; SEE DESCRIPTION

AJ7351\_STABILITY: C = MAY HOLD, BUT OF TYPE COMMONLY SUBJECT TO

AJ7351+STABILITY: SURFACE MOTION

AJ7351\_SATELLITE: THE SITE LOCATION WAS REPORTED AS SUITABLE FOR

AJ7351+SATELLITE: SATELLITE OBSERVATIONS - April 25, 2002

AJ7351

| AJ7351 | HISTORY | - Date     | Condition  | Report By |
|--------|---------|------------|------------|-----------|
| AJ7351 | HISTORY | - 20010525 | MONUMENTED | EMCINC    |
| AJ7351 | HISTORY | - 20020425 | GOOD       | MAPTEC    |

AJ7351 HISTORY - 20020425 GOOD MAPTEC

AJ7351

AJ7351

AJ7351 STATION DESCRIPTION

AJ7351

AJ7351'DESCRIBED BY EMC INCORPORATED 2001 (MKC)

AJ7351'THE STATION IS LOCATED ABOUT 1.3 KILOMETERS (0.8 MILES) WEST OF  
AJ7351'MOORE HAVEN, FLORIDA, ABOUT 27.4 KILOMETERS (17.0 MILES) SOUTHEAST  
AJ7351'OF PALMDALE, FLORIDA IN THE MEDIAN ON U.S. HIGHWAY 27.

AJ7351'LOCATED ON THE LAKE HICPOCHEE QUAD, SECTION 10, TOWNSHIP 42 SOUTH,  
AJ7351'RANGE 32 EAST.

AJ7351'

AJ7351'OWNERSHIP FLDT

AJ7351'

AJ7351'TO REACH THE STATION FROM THE INTERSECTION OF STATE ROAD 78 AND  
AJ7351'U.S. HIGHWAY 27 ABOUT 1.6 KILOMETERS (1.0 MILE) WEST OF MOORE HAVEN,  
AJ7351'FLORIDA GO WEST ON U.S. HIGHWAY 27 FOR 0.32 KILOMETERS (0.2 MILES) TO  
AJ7351'THE MARK ON LEFT IN THE MEDIAN.

AJ7351'

AJ7351'THE STATION IS 12.8 METERS (42.0 FEET) WEST OF THE NORTHWEST  
AJ7351'CORNER OF A CONCRETE CATCH BASIN ON A STORM DRAIN IN THE MEDIAN,  
AJ7351'12.4 METERS (40.7 FEET), NORTH OF THE CENTER OF THE SOUTHBOUND  
AJ7351'LANE OF U.S. HIGHWAY 27, 7.3 METERS (24.0 FEET) SOUTH OF THE CENTER OF  
AJ7351'THE

AJ7351'NORTHBOUND LANE OF U.S. HIGHWAY 27, 1.2 METERS (3.9 FEET) EAST OF A  
AJ7351'CARSONITE WITNESS POST AND 0.25 METERS (0.8 FEET) SOUTH OF A  
AJ7351'MAGNET BURIED 0.1 METERS (0.3 FEET) BELOW GROUND.

AJ7351'

AJ7351'

AJ7351'

AJ7351'

AJ7351

AJ7351

STATION RECOVERY (2002)

AJ7351

AJ7351'RECOVERY NOTE BY MAPTECH INCORPORATED 2002 (CDP)

AJ7351'RECOVERED AS DESCRIBED.

AJ7351'

\*\*\* retrieval complete.

Elapsed Time = 00:00:02

|                                                                                            |      |                                                                              |             |              |           |       |  |
|--------------------------------------------------------------------------------------------|------|------------------------------------------------------------------------------|-------------|--------------|-----------|-------|--|
| From the "ngvd29.txt" file provided by NGS for the CERP Geodetic Vertical Control Project. |      |                                                                              |             |              |           |       |  |
| Line/Part: L26218                                                                          |      | SSN+: mark floated, SSN*: mark constrained, SSN#: mark floated & constrained |             |              |           |       |  |
| Mark ID                                                                                    | SSN  | PID                                                                          | Designation | Geopotential | Elevation | Codes |  |
| 1292                                                                                       | 1819 | AJ7351                                                                       | V 529       | 5.7195       | 5.8363    |       |  |
| 1293                                                                                       | 1820 | AJ7352                                                                       | W 529       | 5.7068       | 5.8232    |       |  |

## The NGS Data Sheet

See file [dsdata.txt](#) for more information about the datasheet.

```

PROGRAM = datasheet95, VERSION = 8.8
1      National Geodetic Survey,      Retrieval Date = JANUARY 13, 2016
AJ7352 *****
AJ7352 DESIGNATION - W 529
AJ7352 PID - AJ7352
AJ7352 STATE/COUNTY- FL/GLADES
AJ7352 COUNTRY - US
AJ7352 USGS QUAD - MOORE HAVEN (1970)
AJ7352
AJ7352 *CURRENT SURVEY CONTROL
AJ7352
AJ7352* NAD 83(2011) POSITION- 26 50 01.82449(N) 081 06 24.71635(W) ADJUSTED
AJ7352* NAD 83(2011) ELLIP HT- -19.249 (meters) (06/27/12) ADJUSTED
AJ7352* NAD 83(2011) EPOCH - 2010.00
AJ7352* NAVD 88 ORTHO HEIGHT - 5.414 (meters) 17.76 (feet) ADJUSTED
AJ7352
AJ7352 NAD 83(2011) X - 880,432.928 (meters) COMP
AJ7352 NAD 83(2011) Y - -5,626,738.221 (meters) COMP
AJ7352 NAD 83(2011) Z - 2,861,790.576 (meters) COMP
AJ7352 LAPLACE CORR - -1.48 (seconds) DEFLEC12B
AJ7352 GEOID HEIGHT - -24.662 (meters) GEOID12B
AJ7352 DYNAMIC HEIGHT - 5.406 (meters) 17.74 (feet) COMP
AJ7352 MODELED GRAVITY - 979,119.8 (mgal) NAVD 88
AJ7352
AJ7352 VERT ORDER - FIRST CLASS II
AJ7352
AJ7352 Network accuracy estimates per FGDC Geospatial Positioning Accuracy
AJ7352 Standards:
AJ7352 FGDC (95% conf, cm) Standard deviation (cm) CorrNE
AJ7352 Horiz Ellip SD_N SD_E SD_h (unitless)
AJ7352 -----
AJ7352 NETWORK 2.67 4.08 1.11 1.07 2.08 0.06548475
AJ7352 -----
AJ7352 Click here for local accuracies and other accuracy information.
AJ7352
AJ7352
AJ7352.The horizontal coordinates were established by GPS observations
AJ7352.and adjusted by the National Geodetic Survey in June 2012.
AJ7352
AJ7352.NAD 83(2011) refers to NAD 83 coordinates where the reference
AJ7352.frame has been affixed to the stable North American tectonic plate. See
AJ7352.NA2011 for more information.
AJ7352
AJ7352.The horizontal coordinates are valid at the epoch date displayed above
AJ7352.which is a decimal equivalence of Year/Month/Day.
AJ7352
AJ7352.The orthometric height was determined by differential leveling and
AJ7352.adjusted by the NATIONAL GEODETIC SURVEY
AJ7352.in February 2002.
AJ7352
AJ7352.Significant digits in the geoid height do not necessarily reflect accuracy.

```

AJ7352.GEOID12B height accuracy estimate available [here](#).

AJ7352

AJ7352.The X, Y, and Z were computed from the position and the ellipsoidal ht.

AJ7352

AJ7352.The Laplace correction was computed from DEFLEC12B derived deflections.

AJ7352

AJ7352.The ellipsoidal height was determined by GPS observations

AJ7352.and is referenced to NAD 83.

AJ7352

AJ7352.The dynamic height is computed by dividing the NAVD 88

AJ7352.geopotential number by the normal gravity value computed on the

AJ7352.Geodetic Reference System of 1980 (GRS 80) ellipsoid at 45

AJ7352.degrees latitude (g = 980.6199 gals.).

AJ7352

AJ7352.The modeled gravity was interpolated from observed gravity values.

AJ7352

AJ7352. The following values were computed from the NAD 83(2011) position.

AJ7352

| AJ7352;         |   | North         | East        | Units | Scale Factor | Converg.   |
|-----------------|---|---------------|-------------|-------|--------------|------------|
| AJ7352;SPC FL E | - | 276,998.725   | 189,378.137 | MT    | 0.99994257   | -0 02 53.7 |
| AJ7352;SPC FL E | - | 908,786.65    | 621,318.10  | sFT   | 0.99994257   | -0 02 53.7 |
| AJ7352;UTM 17   | - | 2,968,036.196 | 489,381.761 | MT    | 0.99960139   | -0 02 53.7 |

AJ7352

AJ7352! - Elev Factor x Scale Factor = Combined Factor

AJ7352!SPC FL E - 1.00000302 x 0.99994257 = 0.99994559

AJ7352!UTM 17 - 1.00000302 x 0.99960139 = 0.99960441

AJ7352

AJ7352 SUPERSEDED SURVEY CONTROL

AJ7352

AJ7352 NAD 83(2007)- 26 50 01.82464(N) 081 06 24.71705(W) AD(2002.00) 0

AJ7352 ELLIP H (02/10/07) -19.230 (m) GP(2002.00)

AJ7352 NAD 83(1999)- 26 50 01.82492(N) 081 06 24.71729(W) AD( ) 1

AJ7352 ELLIP H (12/12/02) -19.232 (m) GP( ) 2 2

AJ7352 NAVD 88 (12/12/02) 5.41 (m) 17.7 (f) LEVELING 3

AJ7352

AJ7352.Superseded values are not recommended for survey control.

AJ7352

AJ7352.NGS no longer adjusts projects to the NAD 27 or NGVD 29 datums.

AJ7352.[See file dsdata.txt](#) to determine how the superseded data were derived.

AJ7352

AJ7352\_U.S. NATIONAL GRID SPATIAL ADDRESS: 17RMK8938168036(NAD 83)

AJ7352

AJ7352\_MARKER: DD = SURVEY DISK

AJ7352\_SETTING: 7 = SET IN TOP OF CONCRETE MONUMENT

AJ7352\_STAMPING: W 529 2001 CERP

AJ7352\_MARK LOGO: USE

AJ7352\_PROJECTION: RECESSED 10 CENTIMETERS

AJ7352\_MAGNETIC: O = OTHER; SEE DESCRIPTION

AJ7352\_STABILITY: C = MAY HOLD, BUT OF TYPE COMMONLY SUBJECT TO

AJ7352+STABILITY: SURFACE MOTION

AJ7352\_SATELLITE: THE SITE LOCATION WAS REPORTED AS SUITABLE FOR

AJ7352+SATELLITE: SATELLITE OBSERVATIONS - August 20, 2012

AJ7352

| AJ7352 | HISTORY | - Date     | Condition  | Report By |
|--------|---------|------------|------------|-----------|
| AJ7352 | HISTORY | - 20010225 | MONUMENTED | EMCINC    |
| AJ7352 | HISTORY | - 20020425 | GOOD       | MAPTEC    |
| AJ7352 | HISTORY | - 20120820 | GOOD       | STONER    |

AJ7352

AJ7352 STATION DESCRIPTION

AJ7352

AJ7352'DESCRIBED BY EMC INCORPORATED 2001 (MKC)  
AJ7352'THE STATION IS LOCATED IN MOORE HAVEN, FLORIDA AT THE WEST CITY  
AJ7352'LIMIT IN THE MEDIAN ON U.S. HIGHWAY 27 NEAR THE INTERSECTION WITH  
AJ7352'WEST AVENUE TO THE SOUTH. LOCATED ON THE MOORE HAVEN QUAD,  
AJ7352'SECTION 10, TOWNSHIP 42 SOUTH, RANGE 32 EAST.  
AJ7352'  
AJ7352'OWNERSHIP FLDT  
AJ7352'  
AJ7352'TO REACH THE STATION FROM THE INTERSECTION OF STATE ROAD 78 AND  
AJ7352'U.S. HIGHWAY 27 ABOUT 1.6 KILOMETERS (1.0 MILE) WEST OF MOORE HAVEN,  
AJ7352'FLORIDA GO EAST ON U.S. HIGHWAY 27 FOR 1.61 KILOMETERS (1.0 MILE) TO  
AJ7352'THE  
AJ7352'MARK ON LEFT IN THE MEDIAN. TO REACH THE MARK FROM THE  
AJ7352'INTERSECTION OF FIFTH STREET AND U.S. HIGHWAY 27 AT THE GLADES  
AJ7352'COUNTY COURTHOUSE IN MOORE HAVEN, FLORIDA GO WEST ON U.S.  
AJ7352'HIGHWAY 27 FOR 1.20 KILOMETERS (0.75 MILES) TO THE MARK ON LEFT IN THE  
AJ7352'MEDIAN.  
AJ7352'  
AJ7352'THE STATION IS 23.0 METERS (75.5 FEET) WEST OF THE EXTENDED CENTER  
AJ7352'OF WEST AVENUE, 9.8 METERS (32.1 FEET) NORTH OF THE CENTER OF THE  
AJ7352'SOUTHBOUND LANE U.S. HIGHWAY 27, 9.8 METERS (32.1 FEET) SOUTH OF THE  
AJ7352'CENTER  
AJ7352'OF THE NORTHBOUND LANE U.S. HIGHWAY 27, 6.25 METERS (20.5 FEET) WEST  
AJ7352'OF THE  
AJ7352'EAST END OF THE MEDIAN, 0.6 METERS (2.0 FEET) EAST OF A CARSONITE  
AJ7352'WITNESS POST AND 0.25 METERS (0.8 FEET) SOUTH OF A MAGNET BURIED 0.1  
AJ7352'METERS (0.3 FEET) BELOW GROUND.  
AJ7352'  
AJ7352'  
AJ7352'  
AJ7352'  
AJ7352'  
AJ7352'  
AJ7352'  
AJ7352' STATION RECOVERY (2002)  
AJ7352'  
AJ7352' RECOVERY NOTE BY MAPTECH INCORPORATED 2002 (CDP)  
AJ7352' RECOVERED AS DESCRIBED.  
AJ7352'  
AJ7352'  
AJ7352'  
AJ7352'  
AJ7352'  
AJ7352' STATION RECOVERY (2012)  
AJ7352'  
AJ7352' RECOVERY NOTE BY STONER AND ASSOCIATES INC 2012 (DS)  
AJ7352' RECOVERED AS DESCRIBED

\*\*\* retrieval complete.  
Elapsed Time = 00:00:02



| DL-502 | 6320 | 510141 | MH1 | 1 | 41    |       |        |          |  |
|--------|------|--------|-----|---|-------|-------|--------|----------|--|
| 1      | 1    | 0      | 1   | 1 | 183.5 | 3.212 | 17.76  | BM W529  |  |
| 2      | 2    | 0      | 1   | 2 | 181.7 | 5.594 | 15.378 | FS       |  |
| 3      | 2    | 0      | 1   | 1 | 208.8 | 3.701 | 15.378 | BS       |  |
| 4      | 3    | 0      | 1   | 2 | 204.2 | 4.425 | 14.654 | FS       |  |
| 5      | 3    | 0      | 1   | 1 | 195.6 | 3.8   | 14.654 | BS       |  |
| 6      | 4    | 0      | 1   | 2 | 206.5 | 3.972 | 14.482 | FS       |  |
| 7      | 4    | 0      | 1   | 1 | 195.1 | 4.085 | 14.482 | BS       |  |
| 8      | 5    | 0      | 1   | 2 | 205.6 | 4.153 | 14.414 | FS       |  |
| 9      | 5    | 0      | 1   | 1 | 200.3 | 4.356 | 14.414 | BS       |  |
| 10     | 6    | 0      | 1   | 2 | 206.1 | 4.454 | 14.316 | FS       |  |
| 11     | 6    | 0      | 1   | 1 | 199.3 | 4.357 | 14.316 | BS       |  |
| 12     | 7    | 0      | 1   | 2 | 205.3 | 3.986 | 14.687 | FS       |  |
| 13     | 7    | 0      | 1   | 1 | 198.3 | 4.255 | 14.687 | BS       |  |
| 14     | 8    | 0      | 1   | 2 | 206.5 | 4.393 | 14.549 | FS       |  |
| 15     | 8    | 0      | 1   | 1 | 199.5 | 3.219 | 14.549 | BS       |  |
| 16     | 9    | 0      | 1   | 2 | 202.5 | 4.085 | 13.683 | FS       |  |
| 17     | 9    | 0      | 1   | 1 | 202   | 3.917 | 13.683 | BS       |  |
| 18     | 10   | 0      | 1   | 2 | 204.8 | 4.083 | 13.517 | FS       |  |
| 19     | 10   | 0      | 1   | 1 | 201.8 | 4.61  | 13.517 | BS       |  |
| 20     | 11   | 0      | 1   | 2 | 241.7 | 4.151 | 13.976 | TBM      |  |
| 21     | 11   | 0      | 1   | 1 | 241.7 | 4.069 | 13.976 | BS       |  |
| 22     | 12   | 0      | 1   | 2 | 201.8 | 4.528 | 13.517 | FS       |  |
| 23     | 12   | 0      | 1   | 1 | 205.4 | 4.341 | 13.517 | BS       |  |
| 24     | 13   | 0      | 1   | 2 | 201.5 | 4.174 | 13.684 | FS       |  |
| 25     | 13   | 0      | 1   | 1 | 203.7 | 4.014 | 13.684 | BS       |  |
| 26     | 14   | 0      | 1   | 2 | 198.4 | 3.12  | 14.578 | FS       |  |
| 27     | 14   | 0      | 1   | 1 | 207.6 | 4.3   | 14.578 | BS       |  |
| 28     | 15   | 0      | 1   | 2 | 197.1 | 4.175 | 14.703 | FS       |  |
| 29     | 15   | 0      | 1   | 1 | 205.6 | 3.811 | 14.703 | BS       |  |
| 30     | 16   | 0      | 1   | 2 | 199.1 | 4.191 | 14.323 | FS       |  |
| 31     | 16   | 0      | 1   | 1 | 205.9 | 4.256 | 14.323 | BS       |  |
| 32     | 17   | 0      | 1   | 2 | 200.5 | 4.152 | 14.427 | FS       |  |
| 33     | 17   | 0      | 1   | 1 | 206.5 | 4.086 | 14.427 | BS       |  |
| 34     | 18   | 0      | 1   | 2 | 194.2 | 4.083 | 14.43  | FS       |  |
| 35     | 18   | 0      | 1   | 1 | 208.1 | 4.18  | 14.43  | BS       |  |
| 36     | 19   | 0      | 1   | 2 | 194.2 | 3.918 | 14.692 | FS       |  |
| 37     | 19   | 0      | 1   | 1 | 204.9 | 4.343 | 14.692 | BS       |  |
| 38     | 20   | 0      | 1   | 2 | 208.3 | 3.667 | 15.368 | FS       |  |
| 39     | 20   | 0      | 1   | 1 | 182.2 | 5.613 | 15.368 | BS       |  |
| 40     | 21   | 0      | 1   | 2 | 183.1 | 3.221 | 17.76  | BM W529  |  |
|        |      |        |     |   |       |       | 17.76  | Pub Elev |  |

|        |      |            |   |   |       |       |                 |  |
|--------|------|------------|---|---|-------|-------|-----------------|--|
| DL-502 | 6320 | 510141 MH2 |   | 1 | 6     |       |                 |  |
| 1      | 1    | 0          | 1 | 1 | 222.8 | 7.001 | 13.976 TBM      |  |
| 2      | 2    | 0          | 1 | 2 | 189.7 | 0.169 | 20.808 Ref Elev |  |
| 3      | 3    | 0          | 1 | 2 | 189.1 | 2.199 | 18.778 BM MHGW  |  |
| 4      | 3    | 0          | 1 | 1 | 189.1 | 2.139 | 18.778 BS       |  |
| 5      | 4    | 0          | 1 | 2 | 222.7 | 6.942 | 13.975 TBM      |  |



## REGISTRATION WORKSHEET - MHGW Addendum

Site Name: **MHGW** Today's Date: **2/13/2012** Type Recorder: **Manual Data Monitoring**  
 Activity: **Addendum** Effective Date:  Start Date of Data :   
 Customer: **L. Hennick/SCADA Monitori** Bus. Area: **SCADA** Agency: **SFWMD** Internal Order:   
 Project Manager: **E. Ebanks** Bus. Area: **InfrStr. Mgt/Survey** Agency: **SFWMD** Fund:   
 Contract #:   
 Project Name:  Legal Mandate:

Short Common Name / Description:

Proj. Mgr. Notes: **Addendum Added to Update Surveying Data for REF. ELEV. (Floridian Well)..**

Site Directions: **In Moorehaven.. US 27/SR 78... Go East on US 27 (East Lanes) for 1.0 ml to West Ave SW. go south on West Ave 1.0ml to Gate...Continue thru gate (left) following shell rock road for about 500ft and curve in road... leave road and continue north over grassy pasture to Well (visible)...**

Site Address (if any):

Transportation: **4X4 Vehicle** Lock type or combination: **Abloy S** #

Recorder Location/Purpose: **Floridian Aquifer Monitoring.** Structure Type:

Array ID Configuration table attached

### SURVEY INFORMATION

B.M. Elevation: **20.118ft** Date: **2/9/2012** Stamp: **BM MHGW 2012**  
 Agency: **SFWMD** Type: **ALUM** Datum: **NGVD 29**

Benchmark Location/ Description: **Located on Concrete Well Base Slab... SFWMD Alum Disk.**

### COMMUNICATIONS INFORMATION

Communications System: **Loggernet** Loggernet Server: **0** Loggernet IP Address:

Tower: **ACMET** Communication Type:  R.F. Code/Modem Address:  R.F. Access Point:

Phone Number:

RTU Address:  Gateways:

### WELL INFORMATION

| Sensor         | Customer Ref | Ref Elev | Elev Date | Top of Well | Bottom of Well | Ground Elev | Benchmark Elev | Benchmark Datum | Ref Elevation Location                               |
|----------------|--------------|----------|-----------|-------------|----------------|-------------|----------------|-----------------|------------------------------------------------------|
| GW (Floridian) |              | 22.15ft  | 2/9/2012  |             |                |             | 20.118ft       | NGVD 29         | Orange Paint Mark (Top Of Flange)... With Brass Tag. |

| Sensor         | GW Sensor Location Offset | Meas Pt Elevation | GW Land Elevation | Depth of Well | Type of Well | Top of Monitored Interval | Base of Monitored Interval | Parameter Transmitted |  |  |  |  |  |  |  |  |
|----------------|---------------------------|-------------------|-------------------|---------------|--------------|---------------------------|----------------------------|-----------------------|--|--|--|--|--|--|--|--|
| GW (Floridian) |                           |                   |                   |               |              |                           |                            |                       |  |  |  |  |  |  |  |  |

### COORDINATE INFORMATION

| Item/Param     | Lat | Long | X-Coord | Y-Coord | Sec | Township | Range | Quad        | Basin | County | Description |
|----------------|-----|------|---------|---------|-----|----------|-------|-------------|-------|--------|-------------|
| GW (Floridian) |     |      |         |         | 14  | 42       | 32    | Moore Haven |       | Glades |             |