



X-Y CALIPER LOG

Company Applied Drilling & Engineering, Inc.
Well OKF-42
Country USA

Field Basinger
County Okeechobee
State Florida
Country USA

Location: Kissimmee River Restoration Project C-38
Pump & Abandonment of Artesian Well
Lat: N 27.409222 Long: W -81.153388
SEC TWP RGE
Permanent Datum
Log Measured From
Drilling Measured From
Pad Level
Elevation

Other Services
NONE
K B
D F
G L

Date
Run Number
Run Date
Depth Interval
Bottom Logged Interval
SURFACE
1153

Tool Joint Interval
Type Fluid
H2O
Density / Viscosity
N/A
Max. Recorded Temp.
1200 85/2017
Time Logged on Bottom
13:00 85/2017

Equipment Number
MWD
MWD
S.M. Meter / Meter
D.Hire (Carroll)
F. Peary (A/E)

Run Number
Run Date
Depth Interval
Bottom Logged Interval
SURFACE
1153

Weight
From
To

Size
Weight
From
To

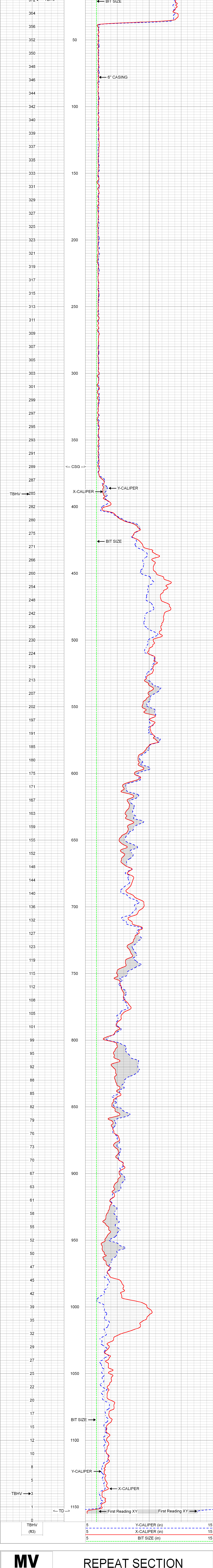
Case Record
Surface String
Packer String
Liner
2017066
5spdfilas
adeokf42_2b
FIELD PRINT

Company Applied Drilling & Engineering, Inc.
Well OKF-42
Country USA
Field Basinger
County Okeechobee
State Florida
Country USA
Location: Kissimmee River Restoration Project C-38
Pump & Abandonment of Artesian Well
Lat: N 27.409222 Long: W -81.153388
SEC TWP RGE
Permanent Datum
Log Measured From
Drilling Measured From
Pad Level
Elevation
Other Services
NONE
K B
D F
G L
Date
Run Number
Run Date
Depth Interval
Bottom Logged Interval
SURFACE
1153
Tool Joint Interval
Type Fluid
H2O
Density / Viscosity
N/A
Max. Recorded Temp.
1200 85/2017
Time Logged on Bottom
13:00 85/2017
Equipment Number
MWD
MWD
S.M. Meter / Meter
D.Hire (Carroll)
F. Peary (A/E)
Run Number
Run Date
Depth Interval
Bottom Logged Interval
SURFACE
1153
Weight
From
To
Size
Weight
From
To
Case Record
Surface String
Packer String
Liner
2017066
5spdfilas
adeokf42_2b
FIELD PRINT

MAXIMUM ARM EXTENSION: 33"
BOREHOLE VOLUMES IN CUBIC FEET
U.S. Army Corp of Engineers / Cardno

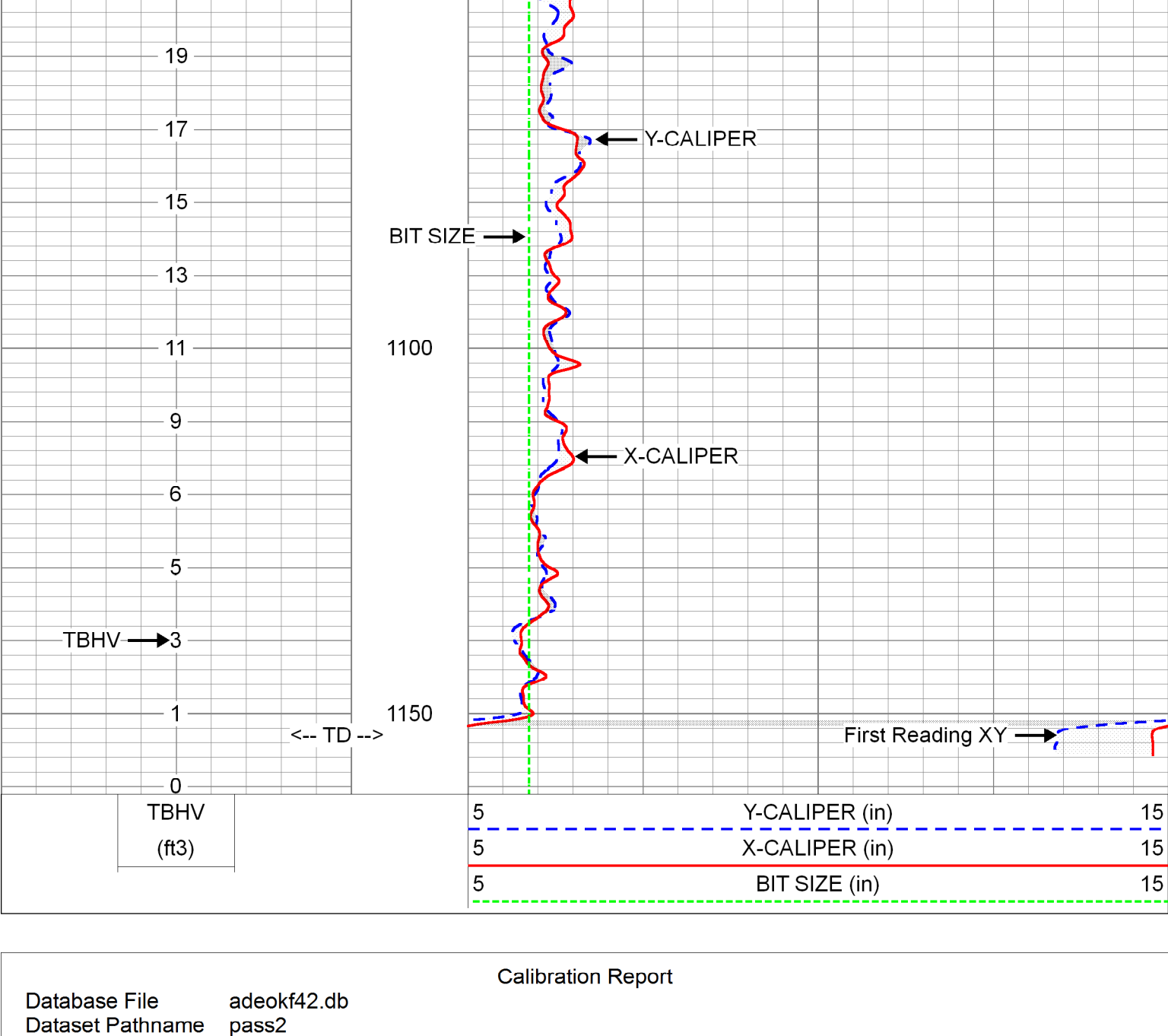
MAIN PASS

Database File adeokf42.db
Dataset Pathname MAIN
Presentation Format xy515-5
Dataset Creation Mon Jun 05 14:31:34 2017
Charted by Depth in Feet scaled 1:240



REPEAT SECTION

Database File adeokf42.db
Dataset Pathname REPEAT
Presentation Format xy515-5
Dataset Creation Mon Jun 05 14:37:23 2017
Charted by Depth in Feet scaled 1:240



Calibration Report

Database File adeokf42.db
Dataset Pathname pass2
Dataset Creation Mon Jun 05 13:32:05 2017

XY Caliper Calibration Report

Serial Number:	01S		
Tool Model:	XYCS		
Performed:	Mon Jun 05 13:59:54 2017		
Small Ring:	6 in		
Large Ring:	33 in		
Reading with Small Ring:	654.7	709.5	cps
Reading with Large Ring:	115.8	1079	cps
Gain:	0.0536459	0.0730717	
Offset:	-29.122	-45.8444	

Gamma Ray Calibration Report

Serial Number:	01	
Tool Model:	GROH	
Performed:	Thu May 25 07:49:22 2017	
Calibrator Value:	120.0	GAPI
Background Reading:	15.4	cps
Calibrator Reading:	135.0	cps
Sensitivity:	1.0037	GAPI/cps

Sensor	Offset (ft)	Schematic	Description	Length (ft)	O.D. (in)	Weight (lb)
GR	5.90		GR-GROH (01)	2.75	3.50	40.00
			XYC-XYCS (01S)	6.60	3.50	110.00
YCAL XCAL	0.50 0.50					

Dataset: adeokf42.db:well/run1/pass2
 Total length: 9.35 ft
 Total weight: 150.00 lb
 O.D.: 3.50 in

Company Applied Drilling & Engineering, Inc.

Well OKF-42
Field Basinger
County Okeechobee
State Florida
Country USA