



SOUTH FLORIDA WATER MANAGEMENT DISTRICT

Rev. 1/16

DB Hydro Station Name: OSF-60 OSS-76	DB Hydro Site Name: TPKDOT	Agency: WMD WMD	Date of Field Work: 21-jan-16 – original <u>21-feb-18 – supplemental</u>
Party Chief: Clanton – original Strickland - supplemental	Field Book: Misc 6Y page 5 Misc 7E page 54		Prepared by: H. Ehmke

SITE SPECIFIC DATA

1Site Benchmark: YEEHAW 2005	Benchmark Elevation (NAVD88) 58.592	Corpscon 6.0.1 Conversion Factor (NAVD88 to NGVD29) +1.250
Reference Elevation(s) (NAVD88): 62.20 - OSF-60 (GW1) 61.83 - OSS-76 (GW2)	Existing Brass Tag Elevation (Datum): 63.44 (GW1) written at the well	Calibration Port Elevation(s) (NAVD88): Not Applicable
Ground Elevation (NAVD88): 58.9		Pad Elevation (NAVD88): 59.27

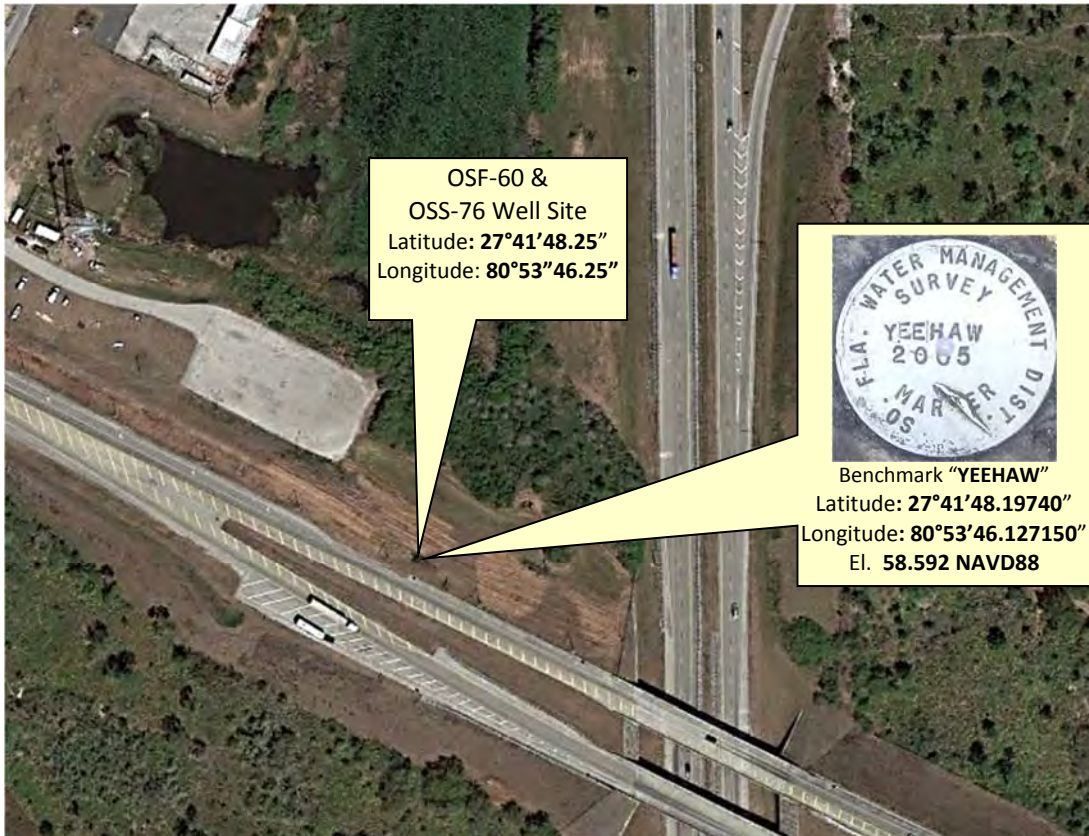
GEOGRAPHIC DATA

Section 14	Township 32 South	Range 43 East	County: Osceola
Benchmark	Latitude: 27°41'48.19740"	Longitude: 80°53'46.12715"	Source: OPUS Solutions
	State Plane Coordinates	Northing (Y) = 1074823.510	Easting (X) = 689772.534

Notes:
NAVD88 – North American Vertical Datum of 1988
NGVD29- National Geodetic Vertical Datum of 1929
Corpscon 6.0.1 - A U.S. Army Corps of Engineers Engineering Research and Development Center Topographic Engineering Center Alexandria, Virginia Windows-based program to convert coordinates and elevations between datum's using vertcon05.txt and vertcon05.05 files supplied by the U.S. Army Corps of Engineers South Atlantic Division, Jacksonville Fl.

PICTURES

Aerial Overall Site



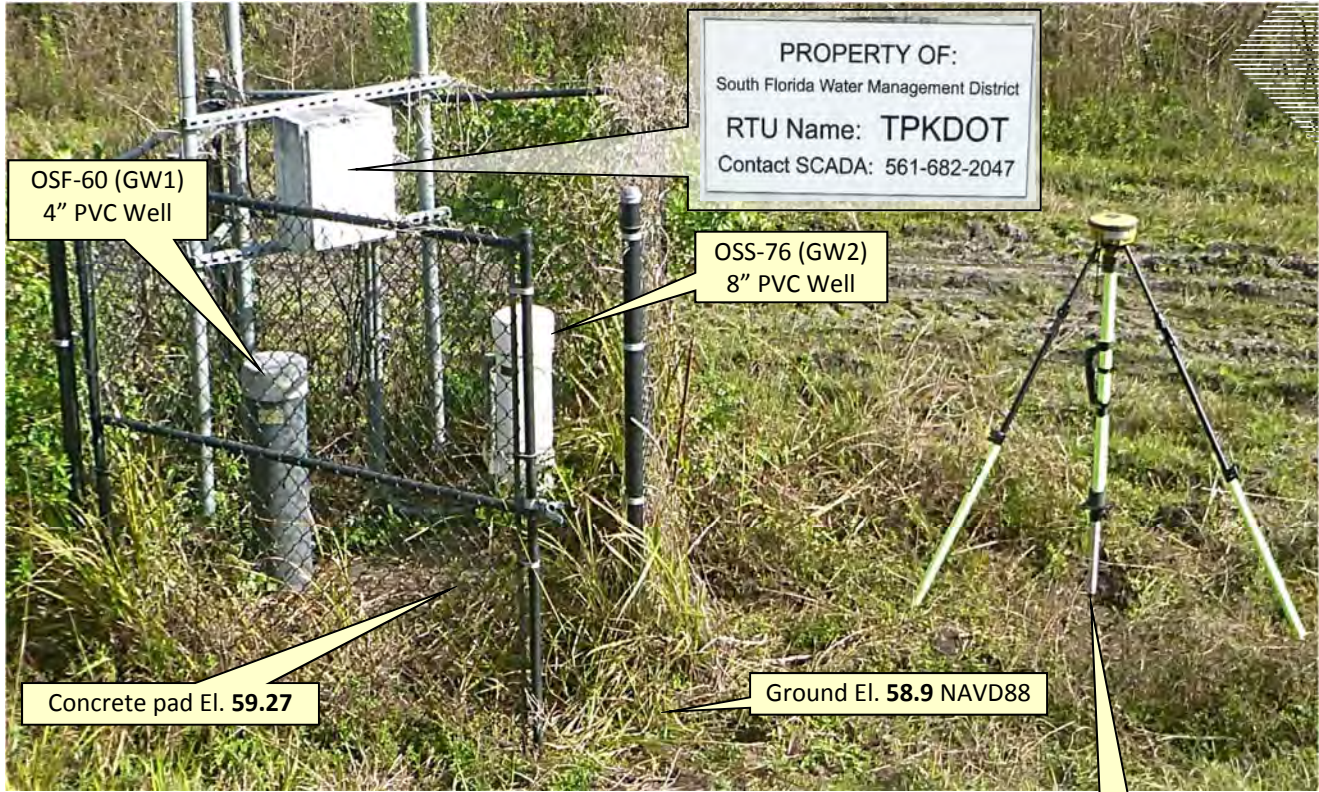
Not to scale (Google Earth product)



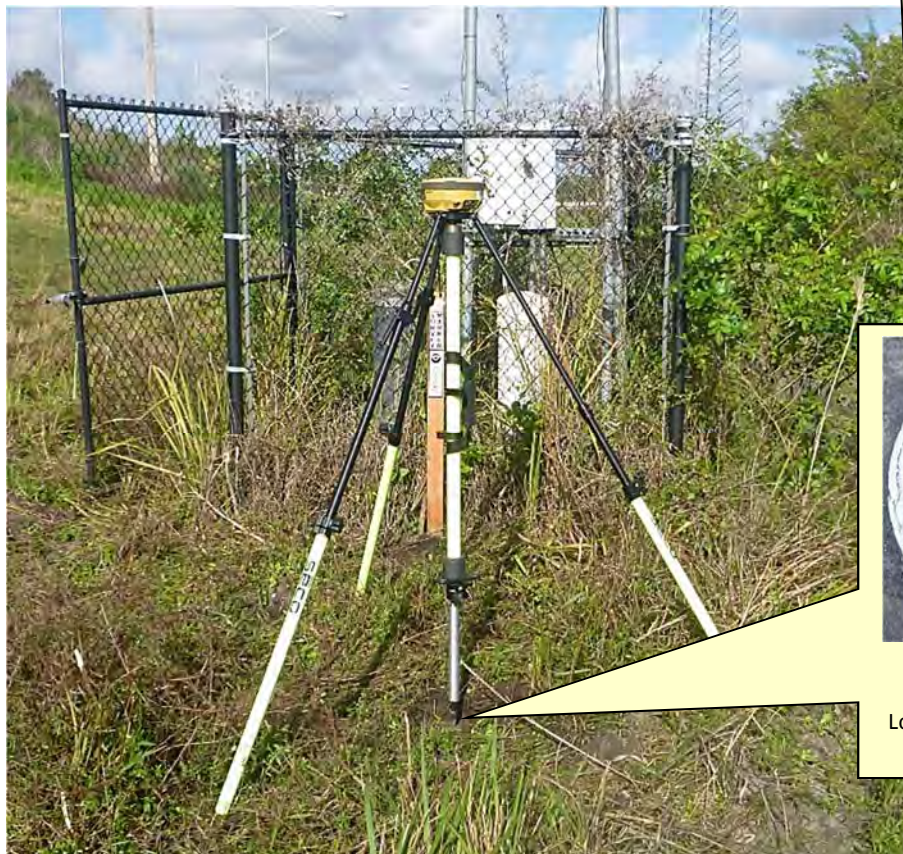
SOUTH FLORIDA WATER MANAGEMENT DISTRICT

Rev. 1/16

Overall



Looking Northwesterly (oblique not to scale) (21-feb-18)



Benchmark "YEEHAW"
Latitude: 27°41'48.19740"
Longitude: 80°53'46.127150"
El. 58.592 NAVD88

Looking Westerly (oblique not to scale) (21-feb-18)



SOUTH FLORIDA WATER MANAGEMENT DISTRICT

Rev. 1/16

OSF-60 (GW1) Well Head

Reference Point
El. 62.20 NAVD88



Looking Northwesterly (oblique not to scale) (20-jun-17)



Looking Southwesterly (oblique not to scale) (03-mar-17)

Old NAVD88 Brass Tag (to be removed)



New NAVD88 Brass Tag Close-up



OSF



SOUTH FLORIDA WATER MANAGEMENT DISTRICT

Rev. 1/16

OSS-76 (GW2) Well Head



Looking Northwesterly (oblique not to scale) (21-feb-18)

Old NAVD88 Brass Tag (to be removed)



New NAVD88 Brass Tag Close-up



SEC	14	TWP	32	RGE	34
	ESTABLISH NAVD 88 ELEV. @ OSF 60 / TPKDOT GW SITE				
STA	+	HI	-	ELEV	BM ELEV
BM	5.51	69.11		58.60	58.59 ² NAVD 88
GW1			1.91	62.20	61.192
GW2			2.28	61.83	61.822
GRND			5.2	58.91	58.902
BM			5.51	58.60	58.60 NAVD 88

T 00 CANTON
B STRICKLAND

COMMENTS
BM YEEHAW 2005 SFWMD ALUM DISK GOOD COND.
GW1 4" PVC PIPE REF MARK ON TOP OF PIPE
GW2 8" PVC PIPE REF MARK ON TOP OF PIPE
GROUND ELEV @ WELL
BM YEEHAW 2005 SFWMD ALUM DISK GOOD COND.

SEC 14 TWP 32 RGE 34

ELEVATION ON CONC PAD of TPKDOT
WELL PAD & OPUS BM YEEHAW 2005
SFIMMS ALUM DISK FOR NGS AS
PER HOWARD EMMKE

STA	+	HI	-	ELEV	BM EL
BM	5.13	63.72			58.59 NAVD 88
CONC PAD			4.45	59.27	
			5.13	58.59	58.59

OPUS BM YEEHAW 2005

START @ 9:23 AM EST

END @ 2:24 PM

HI = 1.5 m TOPCON HYPER V

OKEE UNIT 8425

III STRICKLAND
A WISE

COMMENTS

BM YEEHAW 2005 FD SFIMMS ALUM CAP FD GOOD
COND. PLACED CENTER PUNCH IN ALUM CAP

CONC PAD CENTER

BM YEEHAW 2005 AS ABOVE

The NGS Data Sheet

See file [dsdata.pdf](#) for more information about the datasheet.

```

PROGRAM = datasheet95, VERSION = 8.12.4
1      National Geodetic Survey,  Retrieval Date = FEBRUARY 20, 2018
DJ8309 *****
DJ8309 DESIGNATION - YEEHAW
DJ8309 PID - DJ8309
DJ8309 STATE/COUNTY- FL/OSCEOLA
DJ8309 COUNTRY - US
DJ8309 USGS QUAD - FORT DRUM NW (1972)
DJ8309
DJ8309 *CURRENT SURVEY CONTROL
DJ8309
DJ8309* NAD 83(1986) POSITION- 27 41 48. (N) 080 53 46. (W) SCALED
DJ8309* NAVD 88 ORTHO HEIGHT - 17.859 (meters) 58.59 (feet) ADJUSTED
DJ8309
DJ8309 GEOID HEIGHT - -26.788 (meters) GEOID12B
DJ8309 DYNAMIC HEIGHT - 17.832 (meters) 58.50 (feet) COMP
DJ8309 MODELED GRAVITY - 979,163.4 (mgal) NAVD 88
DJ8309
DJ8309 VERT ORDER - FIRST CLASS II
DJ8309
DJ8309.The horizontal coordinates were scaled from a topographic map and have
DJ8309.an estimated accuracy of +/- 6 seconds.
DJ8309.
DJ8309.The orthometric height was determined by differential leveling and
DJ8309.adjusted by the NATIONAL GEODETIC SURVEY
DJ8309.in May 2008.
DJ8309
DJ8309.Significant digits in the geoid height do not necessarily reflect accuracy.
DJ8309.GEOID12B height accuracy estimate available here.
DJ8309
DJ8309.Photographs are available for this station.
DJ8309
DJ8309.The dynamic height is computed by dividing the NAVD 88
DJ8309.geopotential number by the normal gravity value computed on the
DJ8309.Geodetic Reference System of 1980 (GRS 80) ellipsoid at 45
DJ8309.degrees latitude (g = 980.6199 gals.).
DJ8309
DJ8309.The modeled gravity was interpolated from observed gravity values.
DJ8309
DJ8309; North East Units Estimated Accuracy
DJ8309;SPC FL E - 372,600. 210,250. MT (+/- 180 meters Scaled)
DJ8309
DJ8309_U.S. NATIONAL GRID SPATIAL ADDRESS: 17RNL102636(NAD 83)
DJ8309
DJ8309 SUPERSEDED SURVEY CONTROL
DJ8309
DJ8309.No superseded survey control is available for this station.
DJ8309
DJ8309_MARKER: DD = SURVEY DISK
DJ8309_SETTING: 7 = SET IN TOP OF CONCRETE MONUMENT
DJ8309_STAMPING: YEEHAW 2005
DJ8309_MARK LOGO: SFLWMD
DJ8309_PROJECTION: RECESSED 10 CENTIMETERS
DJ8309_MAGNETIC: M = MARKER EQUIPPED WITH BAR MAGNET
DJ8309_STABILITY: C = MAY HOLD, BUT OF TYPE COMMONLY SUBJECT TO
DJ8309+STABILITY: SURFACE MOTION
DJ8309_SATELLITE: THE SITE LOCATION WAS REPORTED AS SUITABLE FOR

```

DJ8309+SATELLITE: SATELLITE OBSERVATIONS - December 13, 2010

DJ8309

DJ8309	HISTORY	- Date	Condition	Report By
DJ8309	HISTORY	- 2005	MONUMENTED	SFLWMD
DJ8309	HISTORY	- 20070302	GOOD	FLDEP
DJ8309	HISTORY	- 20101213	GOOD	FL-061

DJ8309

DJ8309

STATION DESCRIPTION

DJ8309

DJ8309'DESCRIBED BY FL DEPT OF ENV PRO 2007 (JLM)

DJ8309'THE MARK IS ABOUT 32.3 MI WEST OF VERO BEACH, 0.5 MI SOUTHEAST OF
DJ8309'YEEHAW JUNCTION, IN SECTION 14, TOWNSHIP 32 SOUTH, RANGE 34 EAST.

DJ8309'

DJ8309'TO REACH THE MARK FROM THE INTERSECTION OF U.S. HIGHWAY 441 AND STATE
DJ8309'HIGHWAY 60 IN YEEHAW JUNCTION, GO EAST ON STATE HIGHWAY 60 FOR 0.6 MI
DJ8309'TO THE WEST END OF THE BRIDGE SPANNING THE FLORIDA TURNPIKE AND THE
DJ8309'MARK ON THE LEFT, SET IN THE TOP OF A ROUND CONCRETE MONUMENT
DJ8309'RECESSED 0.4 FT BELOW THE LEVEL OF THE GROUND AND ABOUT 30.0 FT BELOW
DJ8309'THE LEVEL OF STATE HIGHWAY 60.

DJ8309'

DJ8309'LOCATED ABOUT 380.0 FT NORTHWEST OF THE NORTHWEST CORNER OF THE BRIDGE
DJ8309'THAT SPANNING THE FLORIDA TURNPIKE, 180.0 FT NORTHWEST OF A WOODEN
DJ8309'POWER POLE NUMBER 17,426,9 WITH 1 TRANSFORMER AND 3 GUY WIRES
DJ8309'ATTACHED, 140.5 FT NORTH-NORTHEAST OF THE CENTERLINE OF STATE HIGHWAY
DJ8309'60 WESTBOUND LANES, 118.0 FT NORTH-NORTHEAST OF A METAL GUARDRAIL,
DJ8309'116.7 FT NORTHEAST OF THE NORTH LEG OF A FLORIDA TURNPIKE SIGN, 6.4 FT
DJ8309'SOUTH-SOUTHEAST OF THE NORTHEAST CORNER OF A CHAINLINK FENCE, 6.4 FT
DJ8309'EAST OF THE SOUTHEAST CORNER OF THE 6.0 FT TALL CHAINLINK FENCE AND
DJ8309'5.7 FT SOUTHEAST OF A CARSONITE WITNESS POST.

DJ8309'

DJ8309'NOTE A MAGNET WAS EMBEDDED IN THE GROUND ON THE SOUTH SIDE OF THE
DJ8309'MONUMENT.

DJ8309

DJ8309

STATION RECOVERY (2010)

DJ8309

DJ8309'RECOVERY NOTE BY INDIAN RIVER COUNTY FLORIDA 2010 (JS)

DJ8309'RECOVERED IN GOOD CONDITION.

*** retrieval complete.

Elapsed Time = 00:00:02

Office

Project

20 February 2018

INPUT

Geographic, flhp gn - Florida HPGN
Vertical - NAVD88, U.S. Feet

OUTPUT

State Plane, flhp gn - Florida HPGN
0901 - Florida East, U.S. Feet
Vertical - NGVD29 (Custom), U.S. Feet

YEEHAW

1/1

Latitude: 27 41 48.24
Longitude: 80 53 46.20
Elevation/Z: 0

Northing/Y: 1222465.305
Easting/X: 689765.981
Elevation/Z: 1.250
Convergence: 0 02 53.73924
Scale Factor: 0.999942471
Combined Factor: 0.999946612

Remark:

Corpscon v6.0.1, U.S. Army Corps of Engineers

REGISTRATION WORKSHEET - TPKDOT Addendum

Site Name: **TPKDOT** Today's Date: **3/3/2016** Type Recorder: **CR10**
 Activity: **Addendum** Effective Date: **3/3/2016** Start Date of Data :
 Customer: **Garnett Ritchie** Bus. Area: **SCADA Maintenance** Agency: **SFWMD** Internal Order:
 Project Manager: **Jim Vincent** Bus. Area: **SCADA Maintenance** Agency: **SFWMD** Fund:
 Project Name: **VDUP** Legal Mandate: **UNKNOWN** Contract #:

Short Common Name / Description: TPKDOT

Proj. Mgr. Notes: This addendum was performed to add NAVD 88 surveying data for the reference elevation. To convert to NGVD 29 add +0.98ft. Site sensors calibrated using new reference.

Site Directions: From the Florida Turnpike exit in Yeehaw Junction, drive towards SR-60, then turn left into the parking lot next to the highway. The site is located past the east end of the parking lot alongside the overpass.

Site Address (if any):

Transportation: **4X4 Vehicle** Lock type or combination: **Abloy S** #

Recorder Location/Purpose: **Stand-Alone Recorder (Non-Flow Site)** Structure Type:

Array ID Configuration table attached **NO**

SURVEY INFORMATION

B.M. Elevation: **58.595'** Date: **1/12/2005** Stamp: **YEEHAW 2005**
 Agency: **SFWMD** Type: **ALUM** Datum: **NAVD 88**

Benchmark Location/ Description: TO REACH MARK FROM US HIGHWAY 441 AND STATE ROAD 60, GO EAST ON STATE ROAD 60 FOR 0.4 MI (30.48 KM) TO TURNPIKE ENTRANCE ROAD, TURN LEFT ON TURNPIKE ENTRANCE ROAD AND GO NORTH FOR 100 FT (30.48 M) TO TURNPIKE UTILITY ROAD, TURN RIGHT ON UTILITY ROAD AND GO EAST FOR 0.2 MI (0.32 KM) TO MARK ON LEFT, SET IN TOP OF A ROUND CONCRETE MONUMENT 0.2 FT (6.1 CM) BELOW LEVEL OF THE GROUND. LOCATED 7.35 FT (2.24 M) EAST OF NORTHEAST MONITORING WELL, 124.7 FT (38.0 M) WEST OF CONTROL BOX WITH SOLAR PANEL AND RADIO TOWER, 126.6 FT (38.59 M) NORTHEAST OF UTILITY POLE (17/426/8), 181.2 FT (55.23 M) NORTHWEST OF UTILITY POLE (17/426/9).

COMMUNICATIONS INFORMATION

Communications System: **Loggernet** Loggernet Server: **STCLOG1** Loggernet IP Address: **141.232.83.94**
 Tower: **S65-TW** Communication Type: **R.F. (V.H.F. Radio)** R.F. Code/Modem Address: **141** R.F. Access Point: **NO**
 Phone Number:
 RTU Address: Gateways:

WELL INFORMATION

Sensor	Customer Ref	Ref Elev	Elev Date	Top of Well	Bottom of Well	Ground Elev	Benchmark Elev	Benchmark Datum	Ref Elevation Location
GW1		62.20'	1/21/2016	62.20'	29.20'	58.91'	58.595'	NAVD 88	Top of the pipe
GW2		61.83'	1/21/2016	61.83'	-528.17'	58.91'	58.595'	NAVD 88	Top of the pipe

Sensor	GW Sensor Location Offset	Meas Pt Elevation	GW Land Elevation	Depth of Well	Type of Well	Top of Monitored Interval	Base of Monitored Interval	Parameter Transmitted								
GW1				33'	Static											
GW2				590'	Static											

COORDINATE INFORMATION

Item/Parm	Lat	Long	X-Coord	Y-Coord	Sec	Township	Range	Quad	Basin	County	Description
GW1	27° 41' 48.239"	81° 53' 46.218"	689767.83	1222465	14	32	34	3008	S65BC	Osceola	
GW2	27° 41' 48.239"	81° 53' 46.218"	689767.83	1222465	14	32	34	3008	S65BC	Osceola	
RTU	27° 41' 48.239"	81° 53' 46.218"	689767.83	1222465	14	32	34	3008	S65BC	Osceola	

DBHYDRO by station

STATION INFORMATION

Station	OSF-60
Site	TPKDOT
Type	WELL
Latitude (ddmmss.sss)	274148.241
Longitude (ddmmss.sss)	805346.179
X Coord (ft) NAD83	689767.825
Y Coord (ft) NAD83	1222465.321
County	Osceola
Basin	ST. JOHNS RIVER W.M.D.
Section	14
Township	32
Range	34
Map	Launch Map
Well Info	Info
Description	OSF-60 YEEHAW JUNCTION - DEEP WELL
Notes	WELL OSS-60 IN DBHYDRO IS TPKDOTG2 IN DCVP.
Nearby Stations	Nearby Stations
Attachments	Show Attachments

Query returned 1 station record(s).

DBHYDRO | by station

STATION INFORMATION

Station	OSS-76
Site	TPKDOT
Type	WELL
Latitude (ddmss.sss)	274148.236
Longitude (ddmss.sss)	805346.241
X Coord (ft) NAD83	689762.188
Y Coord (ft) NAD83	1222464.735
County	Osceola
Basin	ST. JOHNS RIVER W.M.D.
Section	14
Township	32
Range	34
Map	Launch Map
Well Info	Info
Description	YEEHAW JUNCTION WELL PAIRING - SHALLOW MONITOR WELL
Notes	
Nearby Stations	Nearby Stations
Attachments	Show Attachments

Query returned 1 station record(s).

Get Sample Data

Get Time Series Data

[DBHYDRO Menu](#) | [DBHYDRO Home](#) | [SFWMD Home](#) | [User's Guide](#) | [What's New](#) | [FAQ](#) | [Comments?](#) | [Login](#)

[Privacy Policy](#) | [Disclaimer](#) | [Accessibility](#) | [User Survey](#) | [Redline](#) | [Contact Us](#) | [Locations](#) | [Careers](#)