

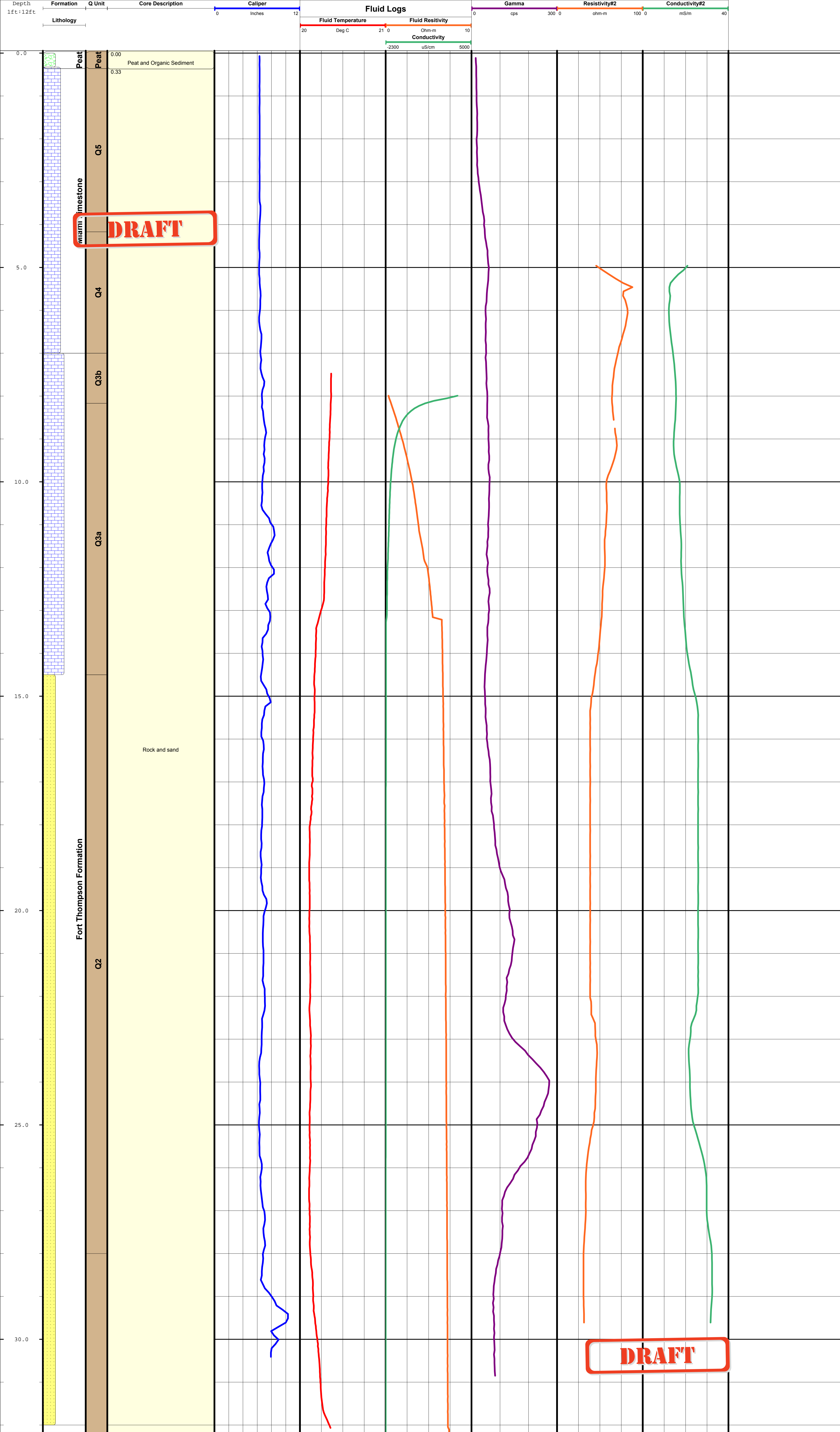
DRAFT



U. S. Geological Survey, Center for Water and Restoration Studies, Miami, Florida

WELL 3AN1-GW-1 PROJECT Tree Island Hydrostratigraphy DATE OF COMPLETION 18 February 2002
LOCATION 26-11-16.4 N ELEVATION 10.219 Feet (NGVD29) Top of Peat WELL DEPTH 32 Feet
080-44-25.3 W

3AN1-GW-1



DRAFT

DRAFT

DRAFT