

COMPLETION REPORT FOR  
GREATER PINE ISLAND WATER ASSOCIATION CLASS I INJECTION WELL SYSTEM,  
PINE ISLAND, LEE COUNTY, FLORIDA

Prepared for:

Greater Pine Island Water Association  
5281 Pine Island Road  
Bookeelia, Florida 33922

January, 2005

Prepared by:

Water Resource Solutions  
428 Pine Island Road, S.W.  
Cape Coral, Florida 33991

FL Engineering Business License #8027

FL Geology Business License #GB318

Project Number

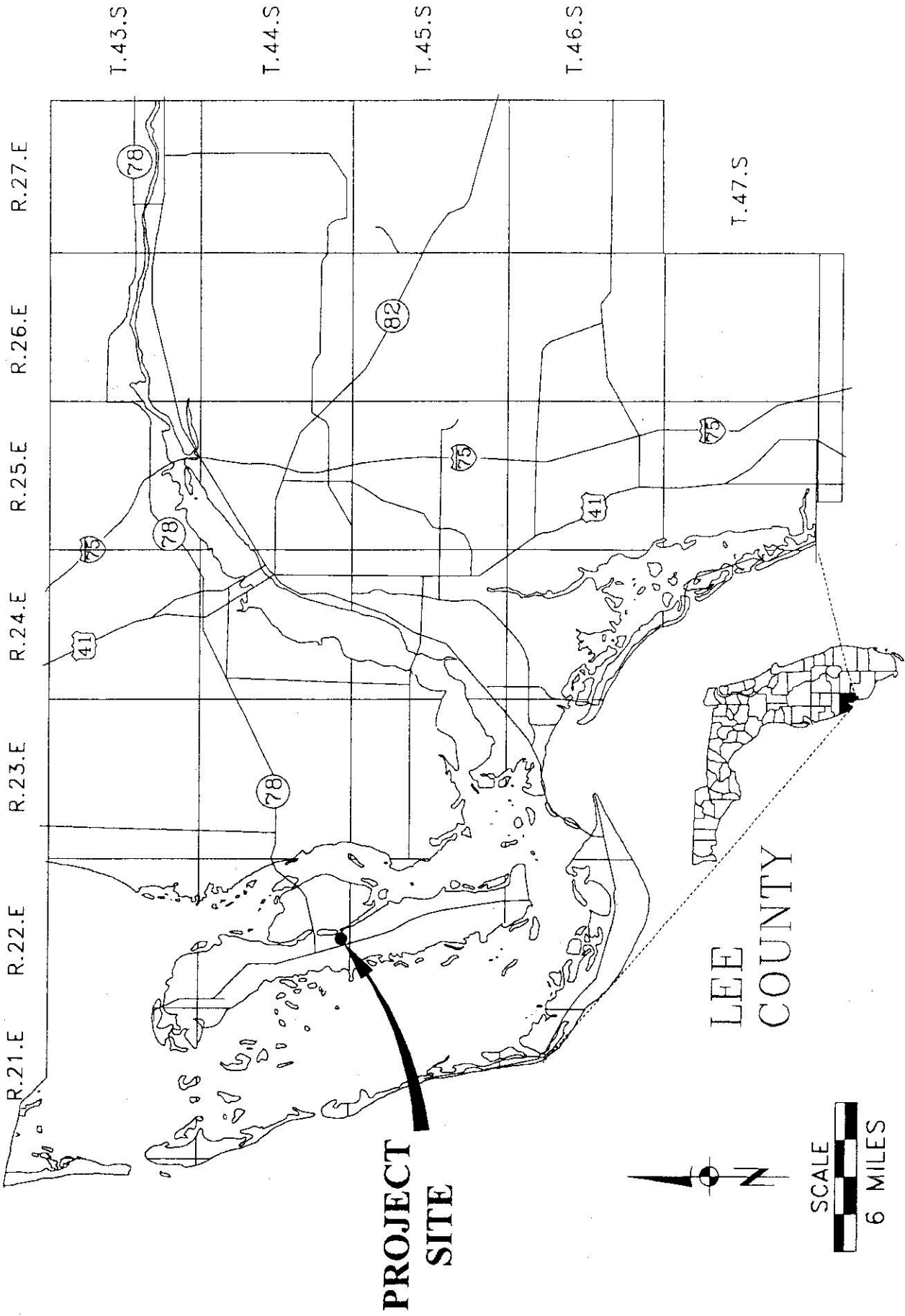
01-04409.01

*Omar Rodriguez 3/20/05*

Omar Rodriguez, P.G.  
Project Hydrogeologist  
Licensed Professional Geologist #2273

*Daniel J. Acquaviva 3/20/05*

Daniel J. Acquaviva, P.G.  
Senior Project Manager/Principal  
Licensed Professional Geologist #1066

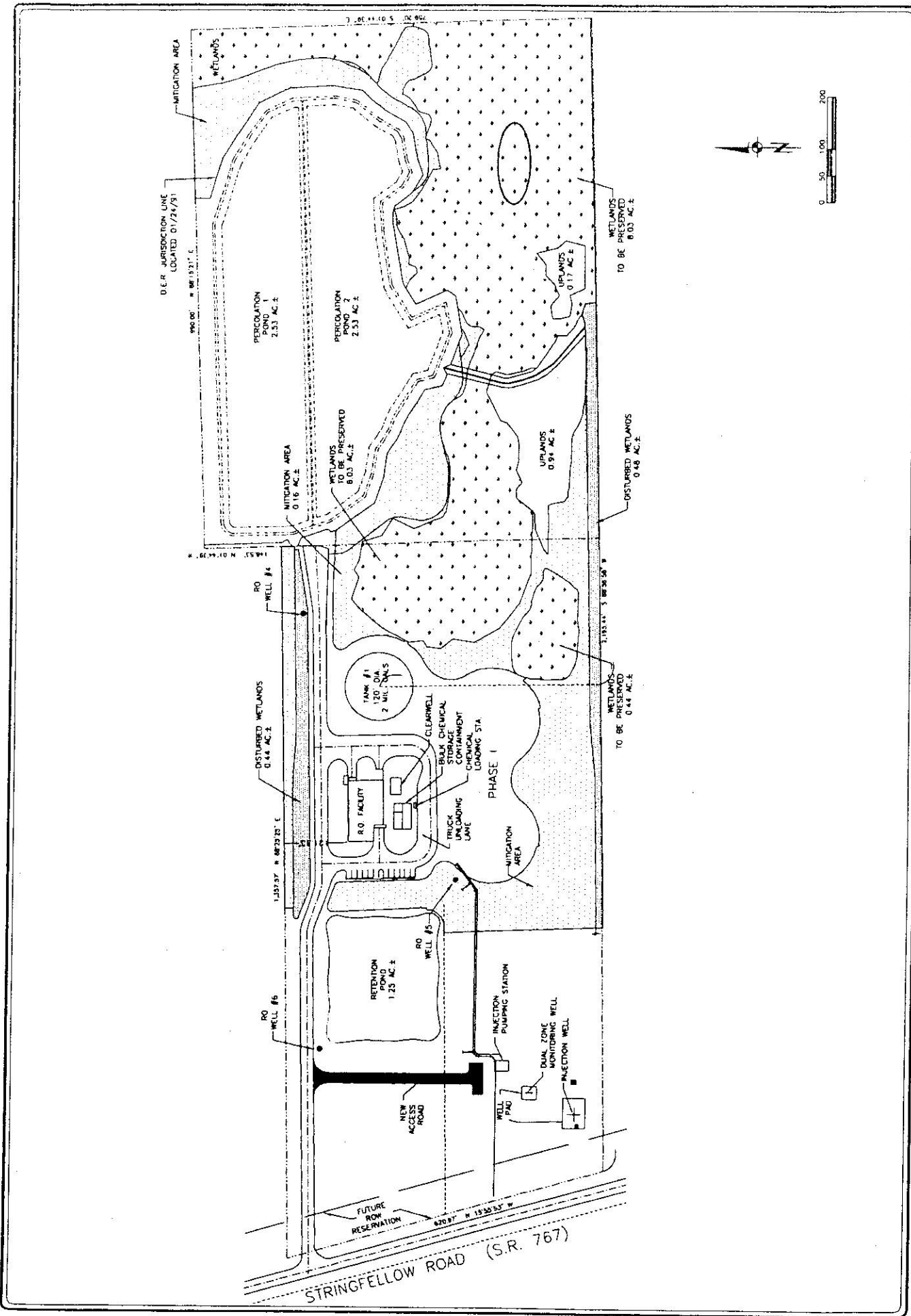


DWG. NUMBER: 1159201ck1  
 DATE: 04/28/06

PROJECT NAME: GPIWA IW  
 PROJECT NUMBER: 1159201

*Water Resource Solutions*

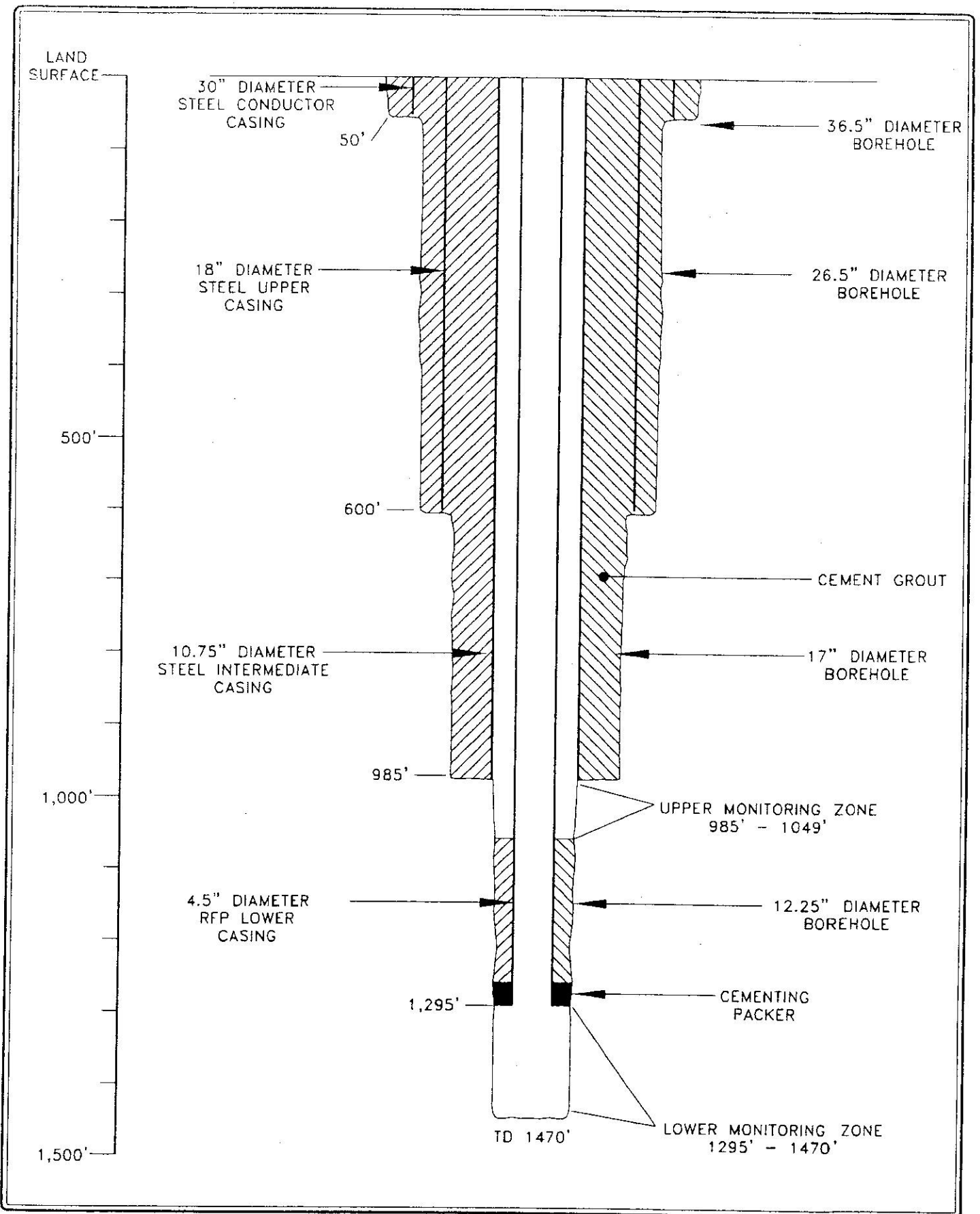
FIGURE 1-1. MAP SHOWING LOCATION OF GPIWA WATER TREATMENT PLANT SITE.



*Water Resource Solutions*

PROJECT NAME: GPIWA IW      DWG. NUMBER: 1159201ck1  
 PROJECT NUMBER: 1159201      DATE: 04/28/06

FIGURE 1-2. DETAILED GPIWA WTP SITE MAP.



<i>Water Resource Solutions</i>	PROJECT NAME: GPIWA IW	DWG. NUMBER: 1159201ck1
	PROJECT NUMBER: 1159201	DATE: 04/28/06

FIGURE 1-4. SCHEMATIC DIAGRAM SHOWING DUAL ZONE MONITORING WELL (LM-7974) CONSTRUCTION DETAILS.

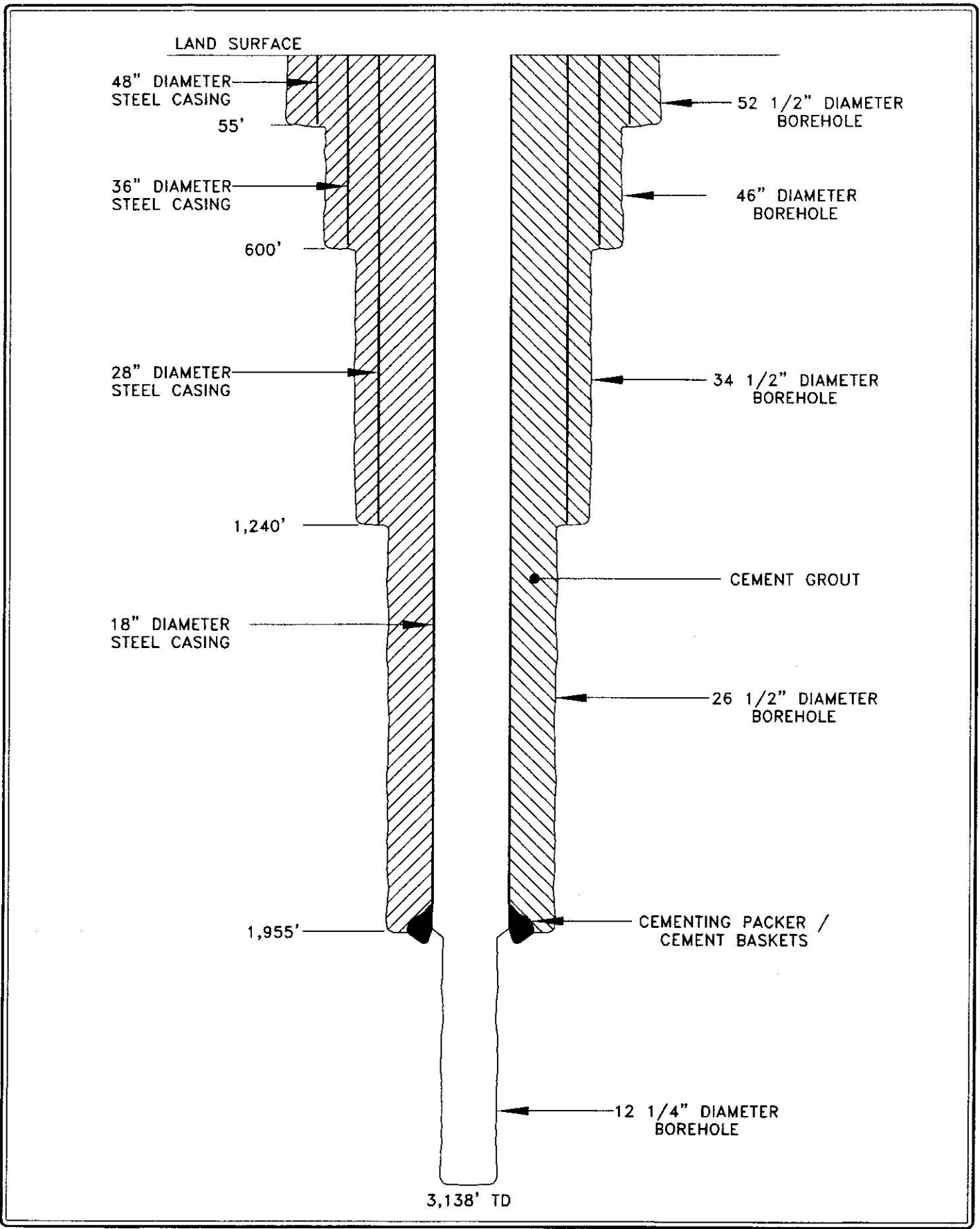


FIGURE 3-3. SCHEMATIC DIAGRAM SHOWING INJECTION WELL (LM-7973) CONSTRUCTION DETAILS.