

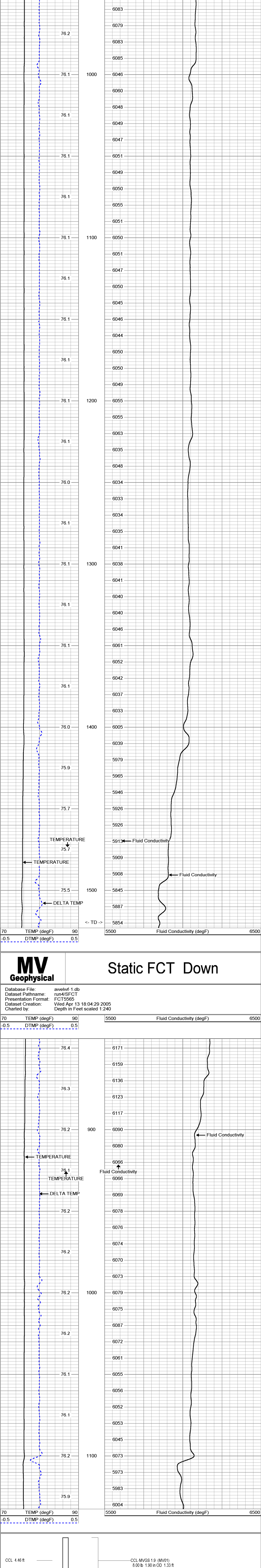
Company	Lake Worth Utilities	Well	F-1	Company	Lake Worth Utilities
Field	Lake Worth	Field	Lake Worth	Well	F-1
County	Palm Beach	County	Palm Beach	Field	Lake Worth
State	Florida	State	Florida	County	Palm Beach
Location	City of Lake Worth Water Treatment Plant	Location	City of Lake Worth Water Treatment Plant	State	Florida
Other Services	JLA Geosciences, Inc.	Other Services	JLA Geosciences, Inc.	County	Palm Beach
DUL/S	G.L.	DUL/S	G.L.	State	Florida
X/Y/C/R	G.L.	X/Y/C/R	G.L.	County	Palm Beach
FLOW	G.L.	FLOW	G.L.	State	Florida
Elevation	25	Elevation	25	County	Palm Beach
K.B. 30'	G.L.	K.B. 30'	G.L.	State	Florida
D.F. 25'	G.L.	D.F. 25'	G.L.	County	Palm Beach
Permanent Datum	G.L.	Permanent Datum	G.L.	State	Florida
Log Measured From	G.L.	Log Measured From	G.L.	County	Palm Beach
Drilling Measured From	G.L.	Drilling Measured From	G.L.	State	Florida
Date	13-APR-2005	Date	13-APR-2005	County	Palm Beach
Run Number	FOUR	Run Number	FOUR	State	Florida
Run Date	15/07	Run Date	15/07	County	Palm Beach
Drill Log	15/07	Drill Log	15/07	State	Florida
Bottom Logged Interval	15/07	Bottom Logged Interval	15/07	County	Palm Beach
Open Hole Size	8.65"	Open Hole Size	8.65"	State	Florida
Type of Mud	WATER	Type of Mud	WATER	County	Palm Beach
Type of Cement	NA	Type of Cement	NA	State	Florida
Estimated Cement Top	NA	Estimated Cement Top	NA	County	Palm Beach
Time Well Ready	15:33:41/3:05	Time Well Ready	15:33:41/3:05	State	Florida
Equipment Number	1533	Equipment Number	1533	County	Palm Beach
Recorded By	F.M.S.	Recorded By	F.M.S.	State	Florida
Witnessed By	S.M.H.	Witnessed By	S.M.H.	County	Palm Beach
Run Number	328	Run Number	328	State	Florida
TWO	12:25	TWO	12:25	County	Palm Beach
THREE	28	THREE	28	State	Florida
FOUR	16:25	FOUR	16:25	County	Palm Beach
Surface String	30'	Surface String	30'	State	Florida
Production String	15'	Production String	15'	County	Palm Beach
Log No.	2005071	Log No.	2005071	State	Florida

All interpretations are opinions based on inferences from electrical or other measurements and we cannot and do not guarantee the accuracy or correctness of any interpretation, and we shall not, except in the case of gross or willful negligence on our part, be liable or responsible for any loss, costs, damages, or expenses incurred or sustained by anyone resulting from any interpretation made by any of our officers, agents or employees. These interpretations are also subject to our general terms and conditions set out in our current Price Schedule.

Comments  
 STATIC & DYNAMIC passes were performed.  
 Cw=6123 uS/Cm @ 76.1 degF (Dynamic Sample). Q=850 gpm.  
 FLUID RESISTIVITY CALIBRATION REPORT (Performed: 1-APR-05 11:00)  
 uS/cm CPS  
 3335.0 3305.33  
 4820.1 3030.12  
 6525.1 2891.11  
 TEMPERATURE CALIBRATION REPORT (Performed: 1-APR-04 11:45)  
 DEG-F CPS  
 34.1 2341.74  
 144.6 6951.41  
 Drilling Contractor: All Webb Enterprises, Inc.

**MV Geophysical** Dynamic FCT Up

Database File: awelwf-1.db  
 Dataset Pathname: run4/D/FCT  
 Presentation Format: FCT15565  
 Dataset Creation: Wed Apr 13 17:55:32 2005  
 Charted by: Depth in Feet scaled 1:240



**MV Geophysical** Static FCT Down

Database File: awelwf-1.db  
 Dataset Pathname: run4/S/FCT  
 Presentation Format: FCT15565  
 Dataset Creation: Wed Apr 13 18:04:29 2005  
 Charted by: Depth in Feet scaled 1:240

