



ENTERPRISE SERVICES
ALL WE EBS

MUDDIED HOLE CALIPER LOG

Company **SFWMD**
 Well **MF-41**
 Field **C-23 CANAL**
 County **MARTIN** State **FLORIDA**

Location **Section: Township: Range**
6: 38: 39

Permanent Datum **GL** Elevation
 Lot Measured From **GL**
 Drilling Measured From **GL**

Date **09/20/06**
 Run Number **18**
 Depth (feet) **797**
 Bottom Logged Interval **0'**
 Top Log Interval **18'**

Open Hole Size **WATER MUDDED**
 Type Fluid **NA**
 Density (lb/cu ft) **NA**
 Estimated Comment Top

Time Well Ready **13:45**
 Time Loggee on Bottom **13:26**
 Equipment Number **6-212501A**
 Recorder By **D.MARSHALL**
 Witnessed By

Run Number **BT** From **To** Size **Weight** Turning Record From **To**

Caliper Record
 Production String
 Size
 Weight
 Turning Record
 From
 To

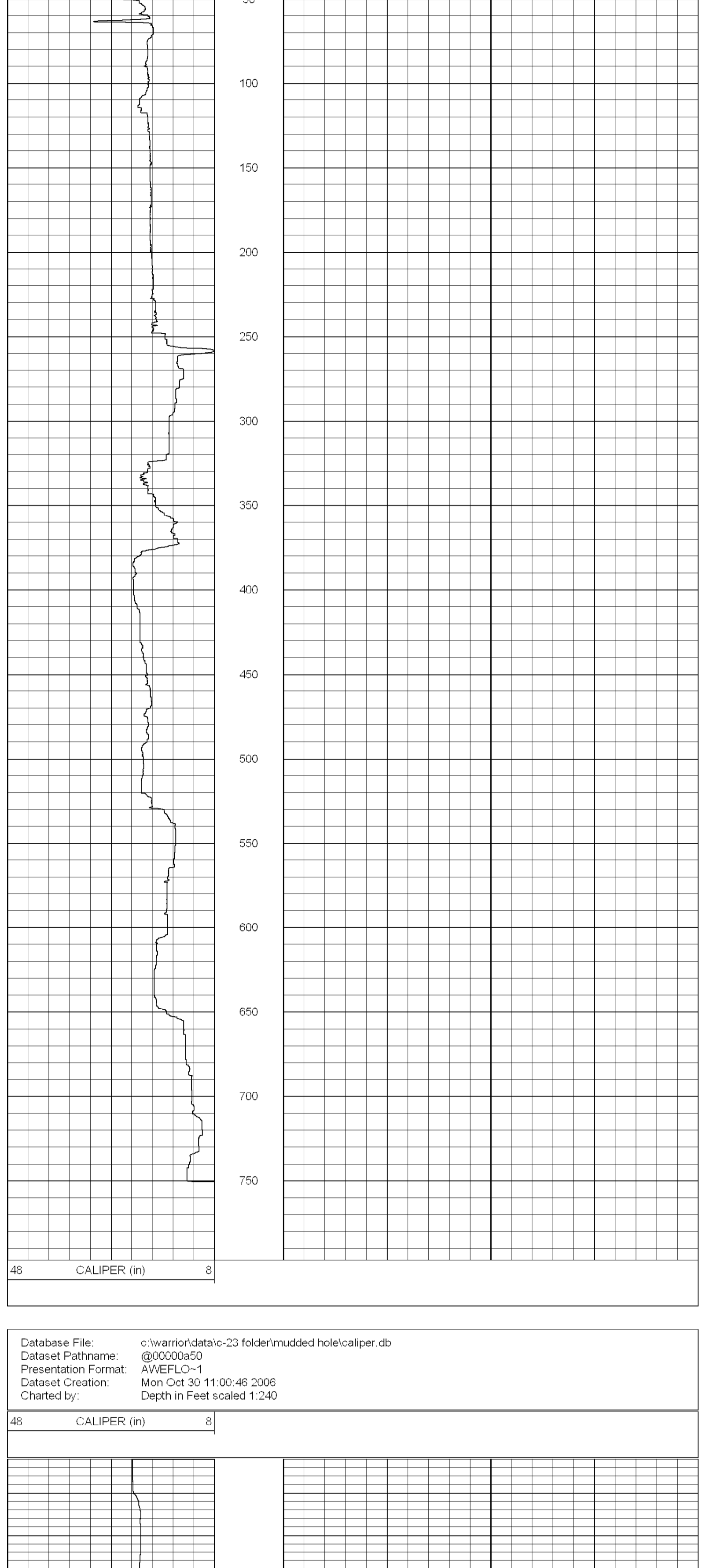
<<< Fold Here >>>

All interpretations are opinions based on inferences from electrical or other measurements and we cannot and do not guarantee the accuracy or correctness of any interpretation, and we shall not, except in the case of gross or willful negligence on our part, be liable or responsible for any loss, costs, damages, or expenses incurred or sustained by anyone resulting from any interpretation made by any of our officers, agents or employees. These interpretations are also subject to our general terms and conditions set out in our current Price Schedule.

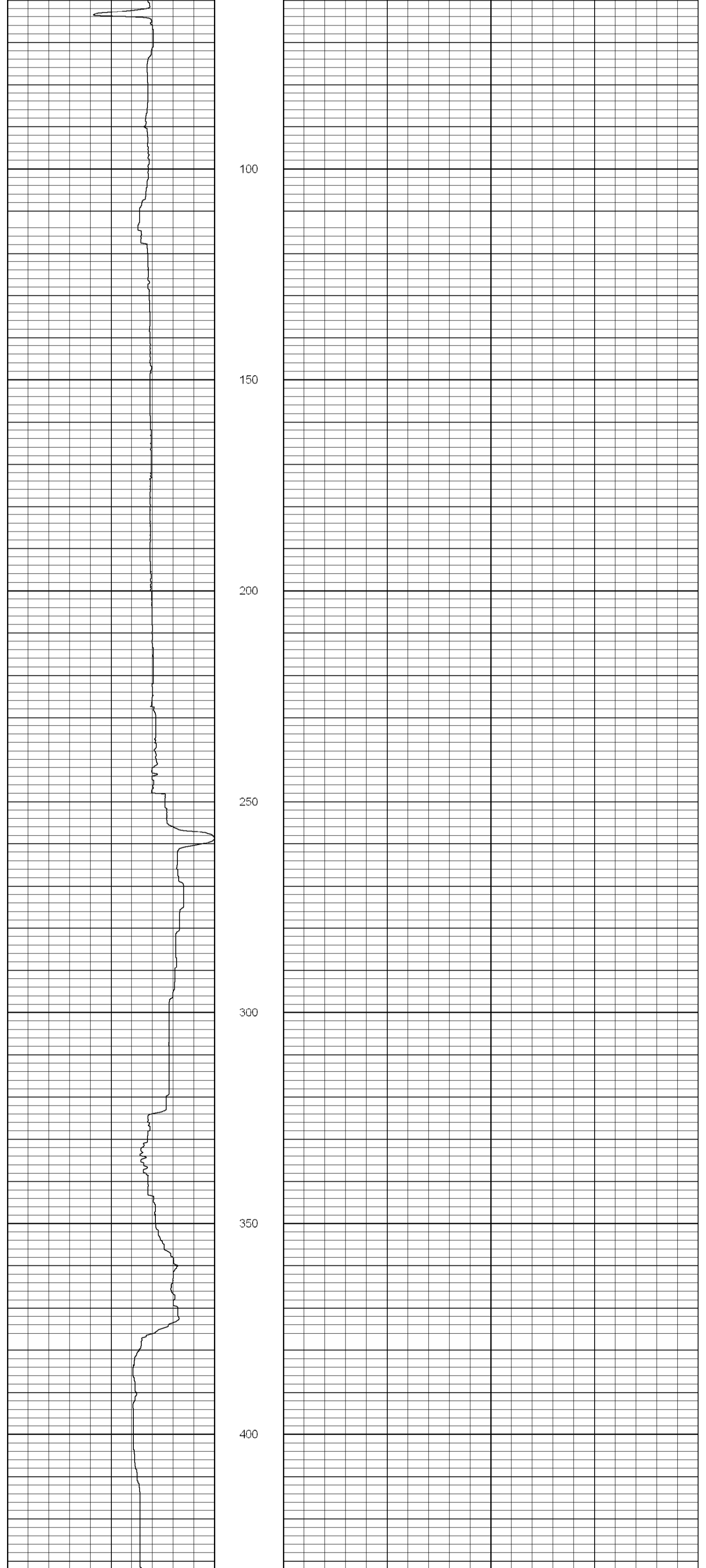
Comments

CALIPER LOG RECORDED IN FRESHLY MUDDIED HOLE.
GPS COORDINATES:
N 27 degrees, 12.355'
W 80 degrees, 28.586'
Estimated Accuracy 149' with 4 Sats

Database File: c:\warrior\data\c-23 folder\muddied hole\caliper.db
 Dataset Pathname: @00000a50
 Presentation Format: AWEFLC-1
 Dataset Creation: Mon Oct 30 11:00:46 2006
 Charted by: Depth in Feet scaled 1:1200



Database File: c:\warrior\data\c-23 folder\muddied hole\caliper.db
 Dataset Pathname: @00000a50
 Presentation Format: AWEFLC-1
 Dataset Creation: Mon Oct 30 11:00:46 2006
 Charted by: Depth in Feet scaled 1:600



Database File: c:\warrior\data\c-23 folder\muddied hole\caliper.db
 Dataset Pathname: @00000a50
 Presentation Format: AWEFLC-1
 Dataset Creation: Mon Oct 30 11:00:46 2006
 Charted by: Depth in Feet scaled 1:240

