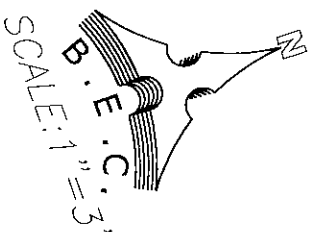


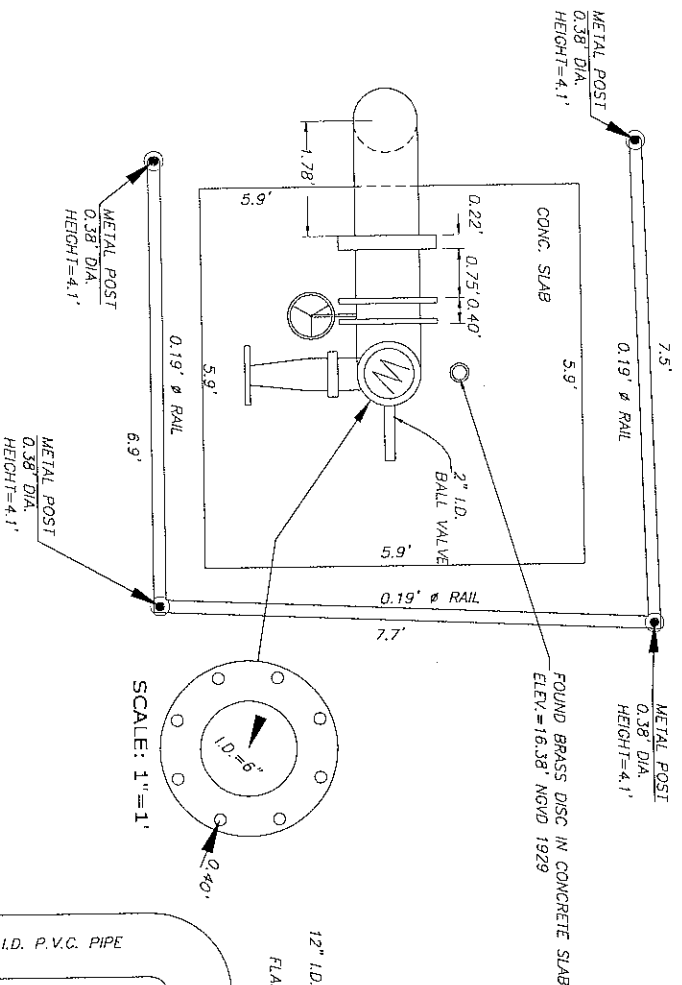
WELTHEAD AS-BUILT

GLF-6

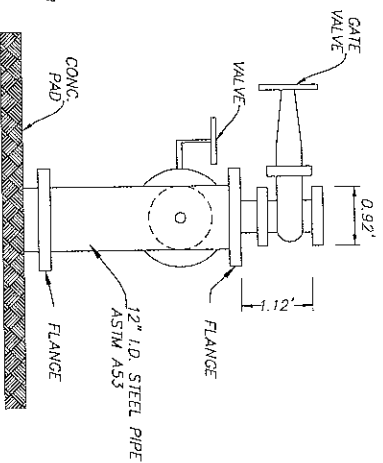


B.M. OF ORIGIN = S.F.W.M.D BENCH MARK ID "SPMMD 1978 GL 9"
ELEV. 35.53 NVD 1929 (AS PROVIDED BY S.F.W.M.D.)

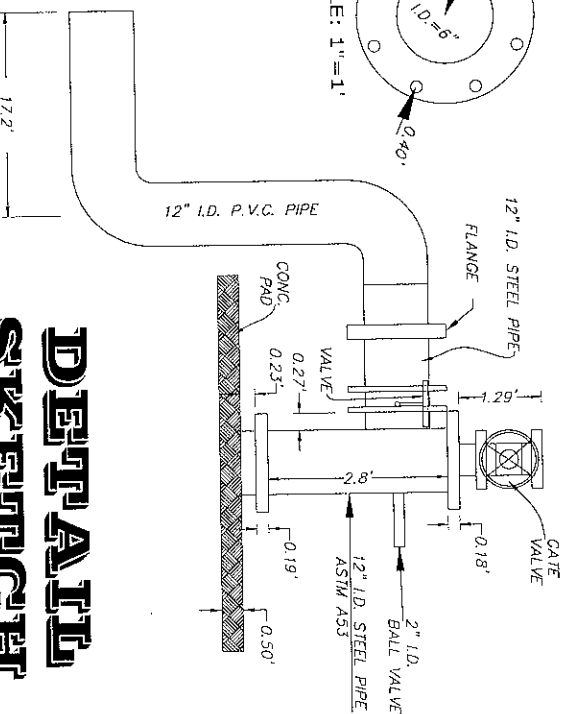
TOP VIEW



SIDE VIEW



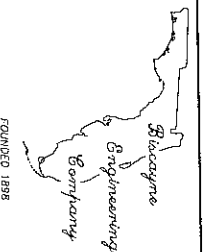
SIDE VIEW



**DETAILED
SKETCH**
GLADES COUNTY

ORDER No.	03-76219
FIELD BOOK No.	2423/22, 2407/19,20
DATE:	2-8-02
FOR:	DIVERSIFIED DRILLING CO.

IN NW 1/4 OF SEC. 12 TWP 42 RNG 32
SHEET 2 OF 3



BISCAYNE ENGINEERING COMPANY, INC.
Consulting Engineers Planners Surveyors

MIAMI
529 WEST FLAGLER STREET
FLORIDA, 33130
PH: (305) 324-7871
FAX: (305) 324-0809

WEB SITE: www.biscayneengineering.com
E-MAIL: info@biscayneengineering.com

FT. LAUDERDALE
6561 SUNSET STRIP
SUNRISE, FLORIDA 33313
PH: (305) 748-1800
FAX: (305) 749-5628