

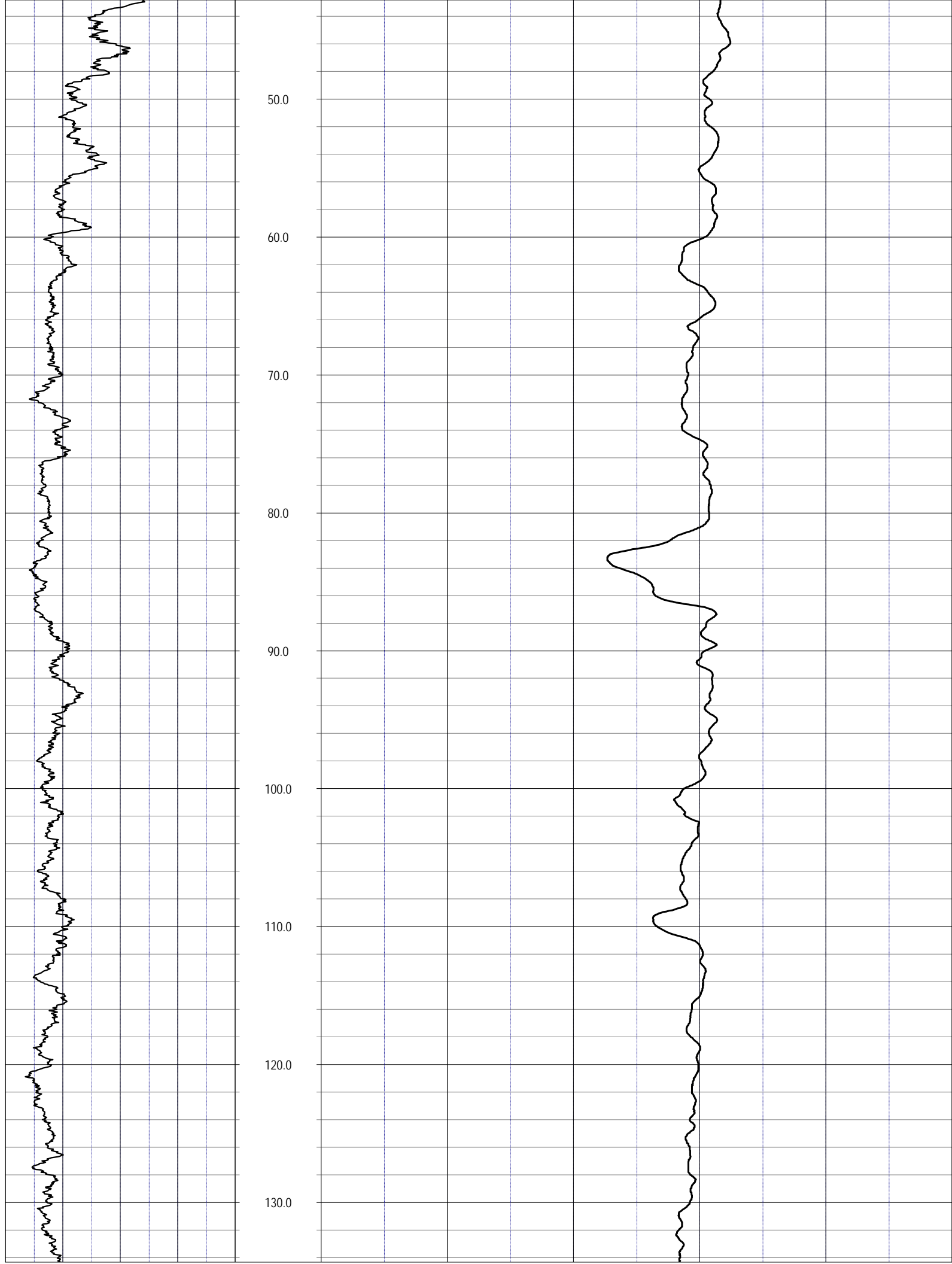
LOGS PROVIDED:
CALIPER
NATURAL GAMMA

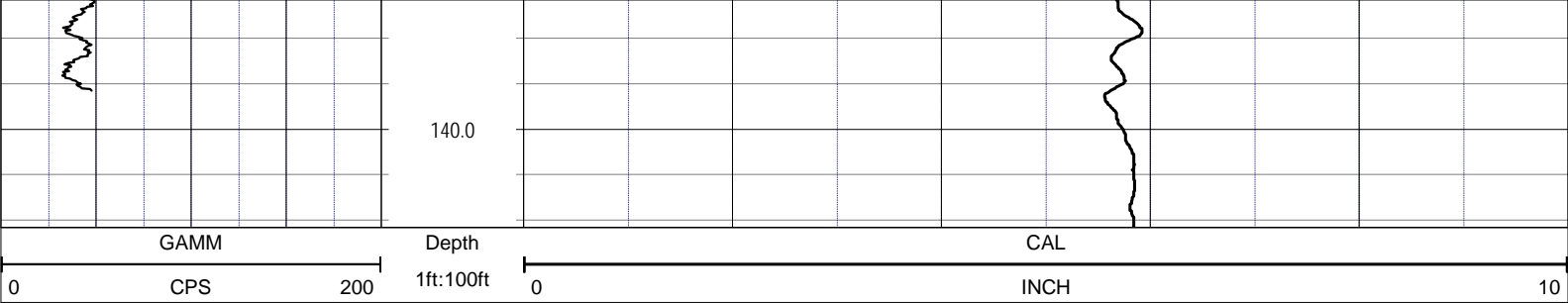
Licensed and Insured

The image displays a stratigraphic log plot with three main data series plotted against depth (ft):

- Depth (ft):** The vertical axis ranges from 0 to 40 feet, with major grid lines every 10 feet and minor grid lines every 2 feet.
- GAMM (CPS):** The left horizontal axis ranges from 0 to 200 CPS, with major grid lines every 50 CPS and minor grid lines every 10 CPS.
- CAL (INCH):** The right horizontal axis ranges from 0 to 10 inches, with major grid lines every 2 inches and minor grid lines every 0.5 inches.

The log shows a prominent peak in CAL at approximately 10 feet depth, reaching nearly 10 inches. The GAMM curve shows significant fluctuations throughout the depth profile, with a notable peak around 10 feet depth and another around 35 feet depth.





NOTES:
While due care has been exercised in the performance of these measurements and observations, in accordance with methodologies utilized by the general practitioner, RIMBAKER LLC can make no representations, warranties, or guarantees with respect to latent or concealed conditions that may exist, which may be beyond the detection capabilities of the methodologies used, or that may extend beyond the areas and depths surveyed.
The geophysical well logs show subsurface conditions as they existed at the dates and locations shown, and it is not warranted that they are representative of subsurface conditions at other locations and times.
If, at any time, different subsurface conditions from those observed are determined to be present, we must be advised and allowed to review and revise our observations if necessary.

Certificate of Authorization GB 458

END OF LOG