

LOGS PROVIDED:
CALIPER
NATURAL GAMMA

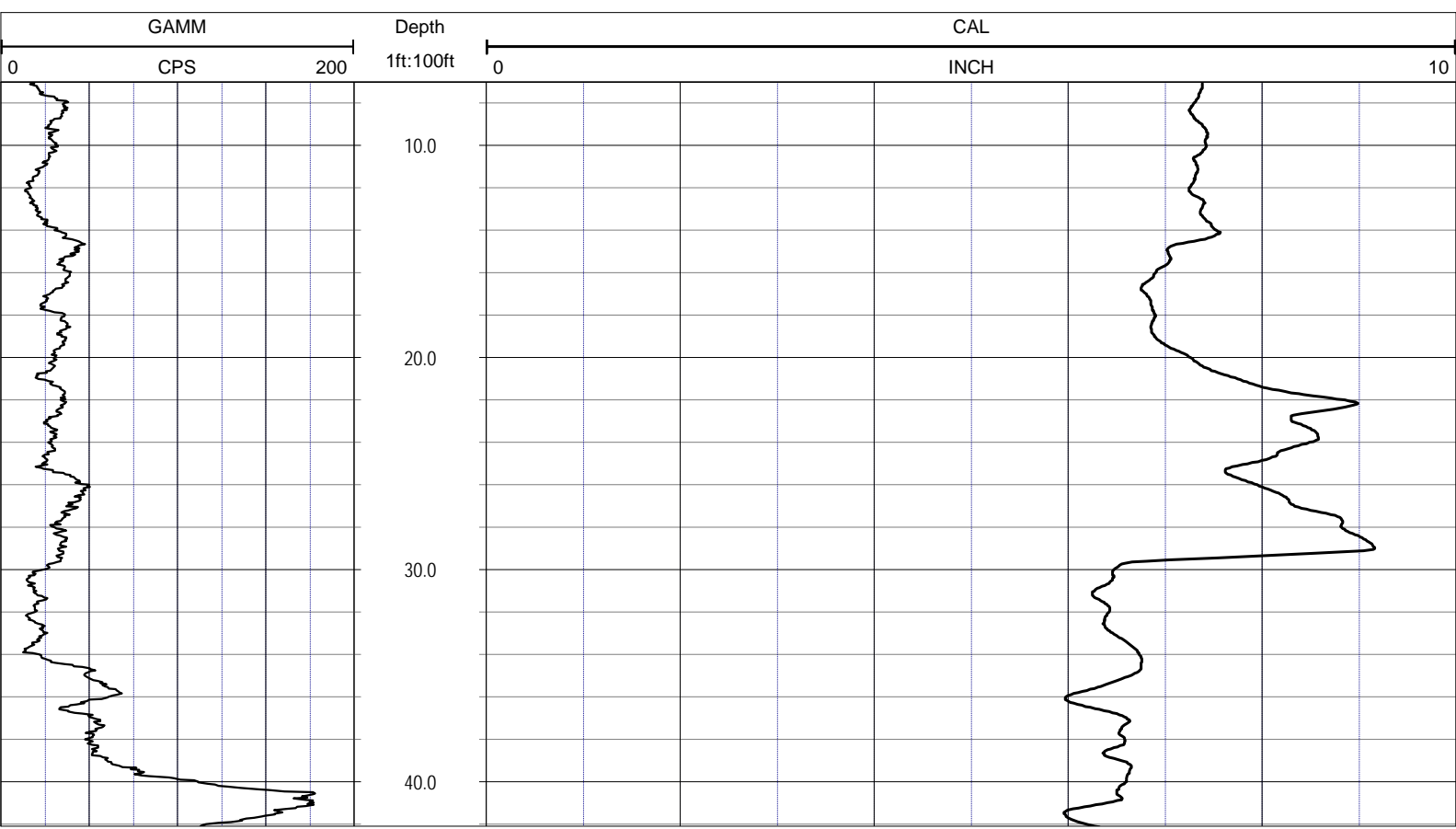
Licensed and Insured

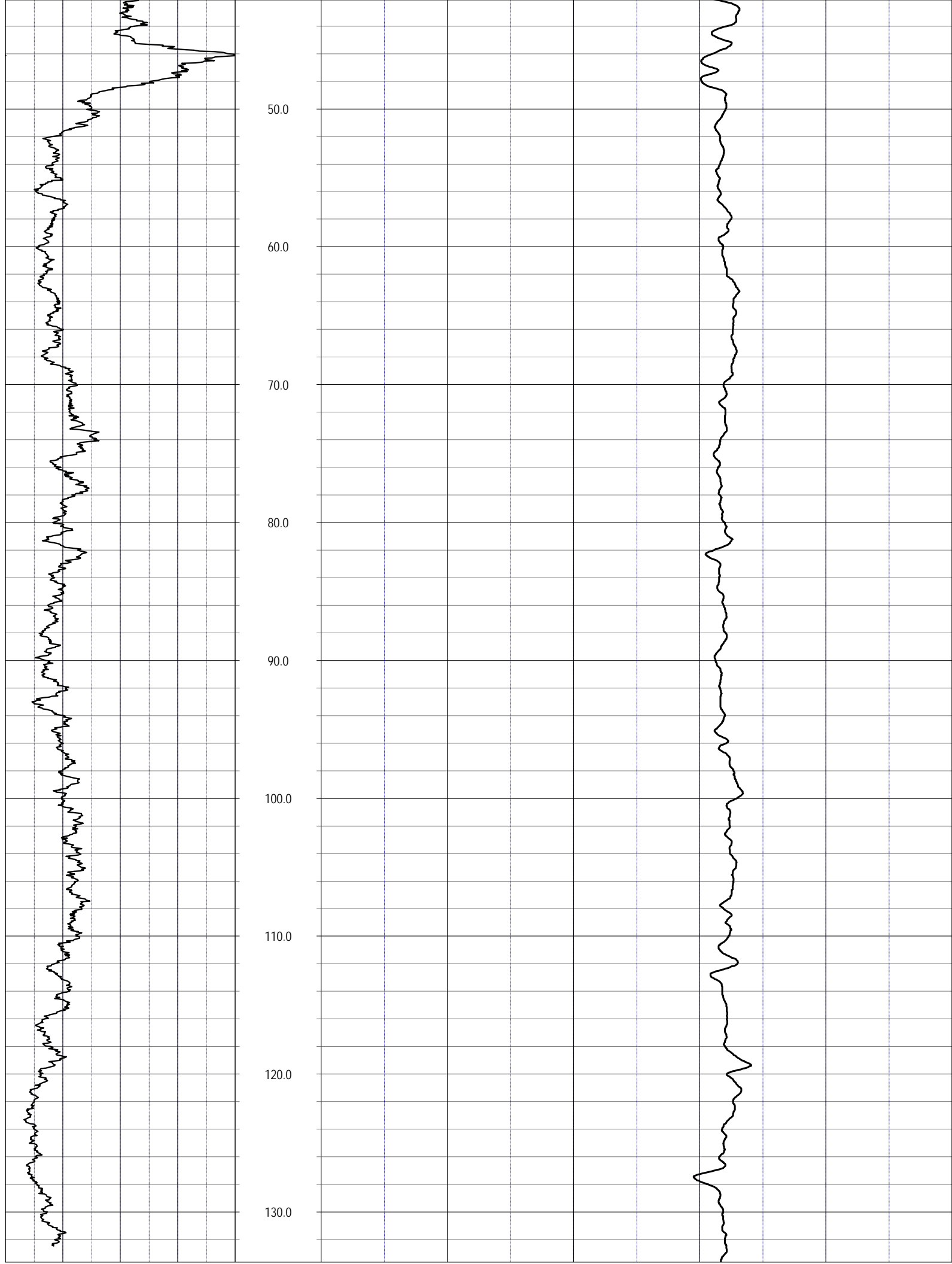
COMPANY:	RIMBAKER LLC		
WELL NAME:	L8FEB2L		
FIELD:	L-8 CANAL		
COUNTRY:	USA	STATE:	FL
		COUNTY:	PALM BEACH
LOC:	ALL SERVICES:		
N/A	CALIBER		
	NATURAL GAMMA		
	DUAL INDUCTION		
	ELECTRIC		
	SONIC		
NOTES:			
SEC	TWP	RGE	
	ELEVATION:		COORDINATES:

ELEVATION: COORDINATES:

-80D21M55.17S
26D41M51.50S

DATE	17 May 14	TYPE FLUID IN HOLE	MUD
RUN No	1	SALINITY	
TYPE LOG	CALIPER	DENSITY	
DEPTH-DRILLER	140	LEVEL	
DEPTH-LOGGER	139.75	MAX. REC. TEMP.	
BTM LOGGED INTERVAL		LOGGING SPEED (FT/MIN)	25
TOP LOGGED INTERVAL		TROLLING DIRECTION	UP
DRILLER	CENTERLINE	PUMPING RATE (GPM)	
RECORDED BY	RIMBAKER LLC		
WITNESSED BY	J.JANZEN		

[illegible]



0 200 GAMM CPS

0 10 CAL INCH

Depth 1ft:100ft

NOTES:

While due care has been exercised in the performance of these measurements and observations, in accordance with methodologies utilized by the general practitioner, RIMBAKER LLC can make no representations, warranties, or guarantees with respect to latent or concealed conditions that may exist, which may be beyond the detection capabilities of the methodologies used, or that may extend beyond the areas and depths surveyed. The geophysical well logs show subsurface conditions as they existed at the dates and locations shown, and it is not warranted that they are representative of subsurface conditions at other locations and times. If, at any time, different subsurface conditions from those observed are determined to be present, we must be advised and allowed to review and revise our observations if necessary.

Certificate of Authorization GB 458

END OF LOG