



Rmbaker LLC

Well: L8FEB3L
Log Stage: Preliminary

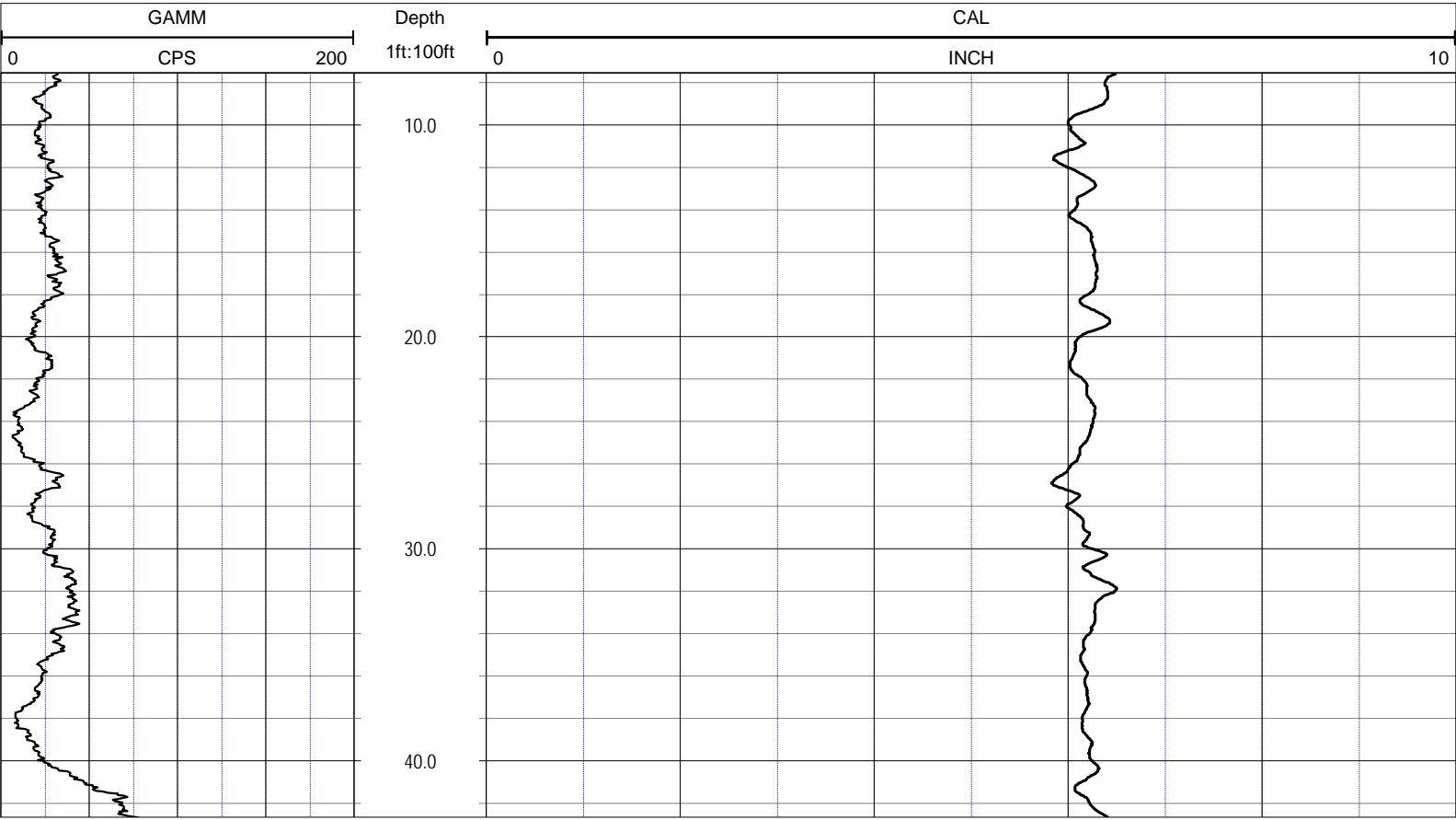
8600 Oldbridge Lane
Orlando, FL 32819
mobile ph 407-733-8958
fax 407-370-4129

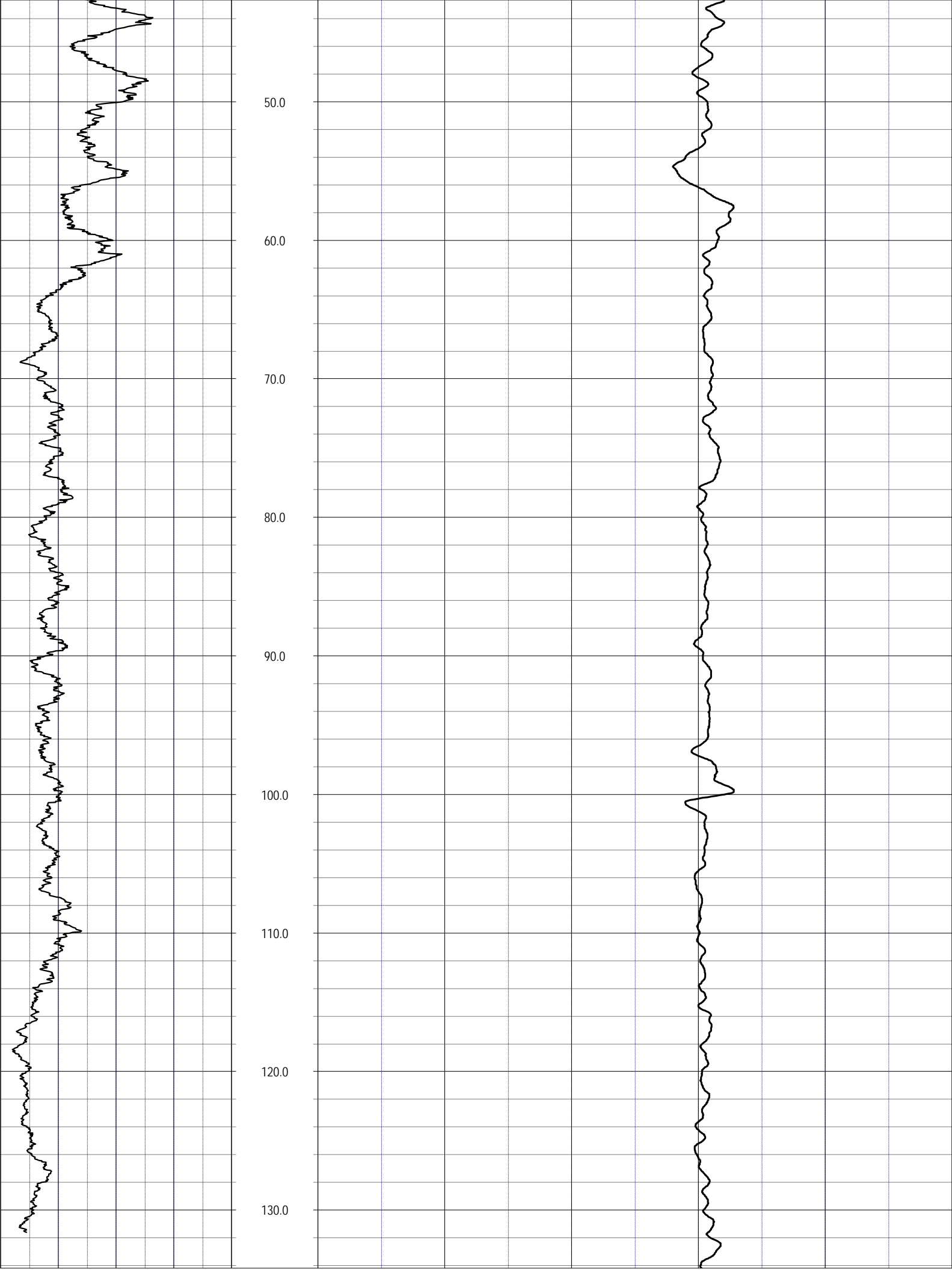
LOGS PROVIDED:
CALPER
NATURAL GAMMA

rob@rmbaker.com
www.rmbaker.com

Licensed and Insured

SRVC				COMPANY: RMBAKER LLC			
UWI				WELL NAME: L8FEB3L			
FLD				FIELD: L-8 CANAL			
PROV				COUNTRY: USA STATE: FL COUNTY: PALM BEACH			
CTY				LOC: N/A			
				NOTES:			
				SEC	TWP	RGE	ALL SERVICES: CALIPER NATURAL GAMMA DUAL INDUCTION ELECTRIC SONIC
PERMANENT DATUM:				ELEVATION:			
LOG MEAS. FROM: GROUND SURFACE				COORDINATES: -80D21M54.70S 26D41M25.00S			
DRILLING MEAS. FROM:							
DATE	05 Jun 14			TYPE FLUID IN HOLE			MUD
RUN No	1			SALINITY			
TYPE LOG	CALIPER			DENSITY			
DEPTH-DRILLER	138			LEVEL			
DEPTH-LOGGER	138.8			MAX. REC. TEMP.			
BTM LOGGED INTERVAL				LOGGING SPEED (FT/MIN)			25
TOP LOGGED INTERVAL				TROLLING DIRECTION			UP
DRILLER	CENTERLINE			PUMPING RATE (GPM)			
RECORDED BY	RMBAKER LLC						
WITNESSED BY	J.JANZEN						
RUN				CASING RECORD			
BOREHOLE RECORD							
NO.	BIT	FROM	TO	SIZE	MAT.	FROM	TO
1	5.875	0	138				





NOTES:

While due care has been exercised in the performance of these measurements and observations, in accordance with methodologies utilized by the general practitioner, Rmbaker LLC can make no representations, warranties, or guarantees with respect to latent or concealed conditions that may exist, which may be beyond the detection capabilities of the methodologies used, or that may extend beyond the areas and depths surveyed.

The geophysical well logs show subsurface conditions as they existed at the dates and locations shown, and it is not warranted that they are representative of subsurface conditions at other locations and times.

If, at any time, different subsurface conditions from those observed are determined to be present, we must be advised and allowed to review and revise our observations if necessary.

Certificate of Authorization GB 458

END OF LOG