



Rmbaker LLC

WELL: L8FEB4L
LOG STAGE: PRELIMINARY

8600 Oldbridge Lane
Orlando, FL 32819
mobile ph 407-733-8958
fax 407-370-4129

rob@rmbaker.com

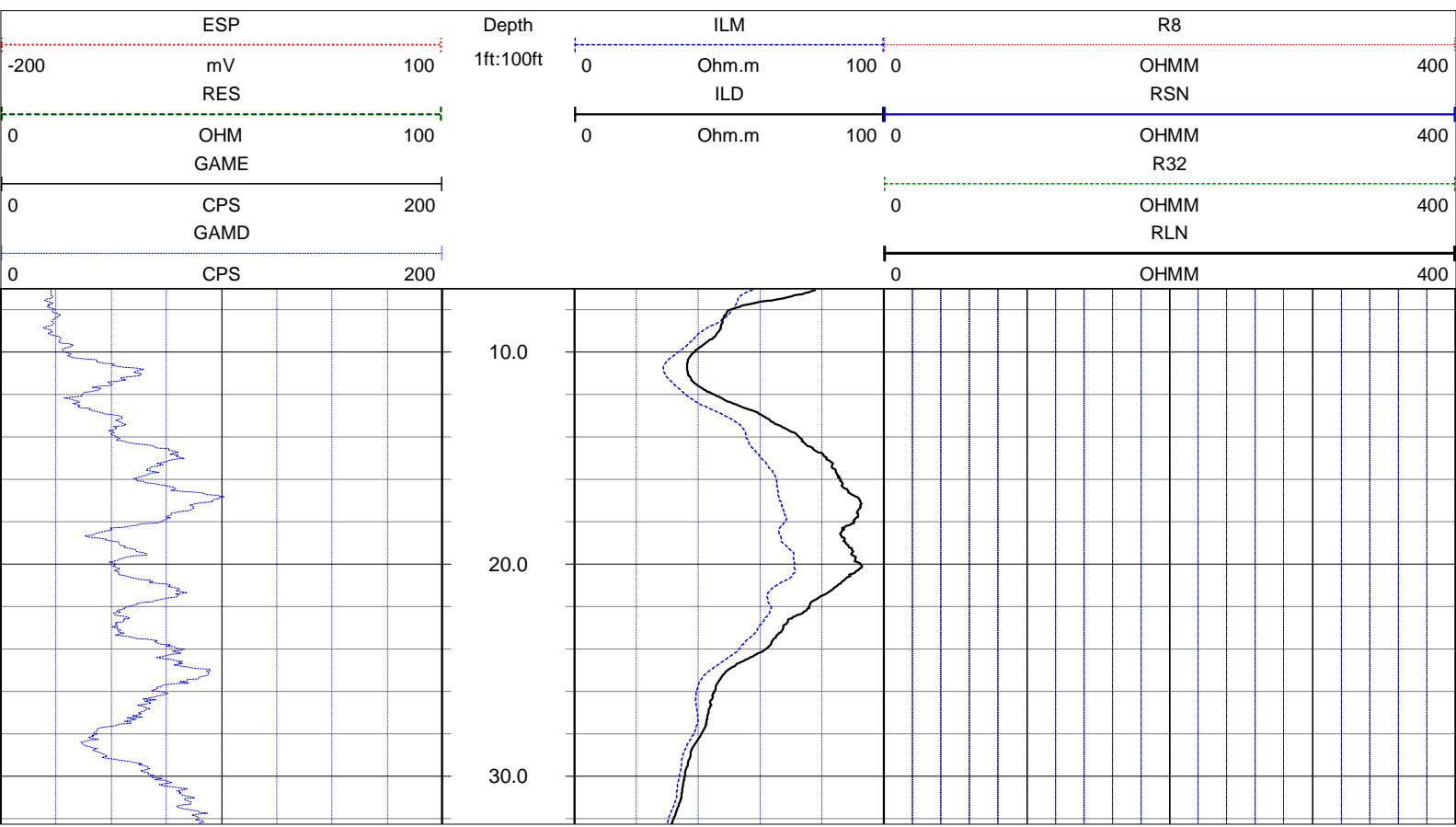
www.rmbaker.com

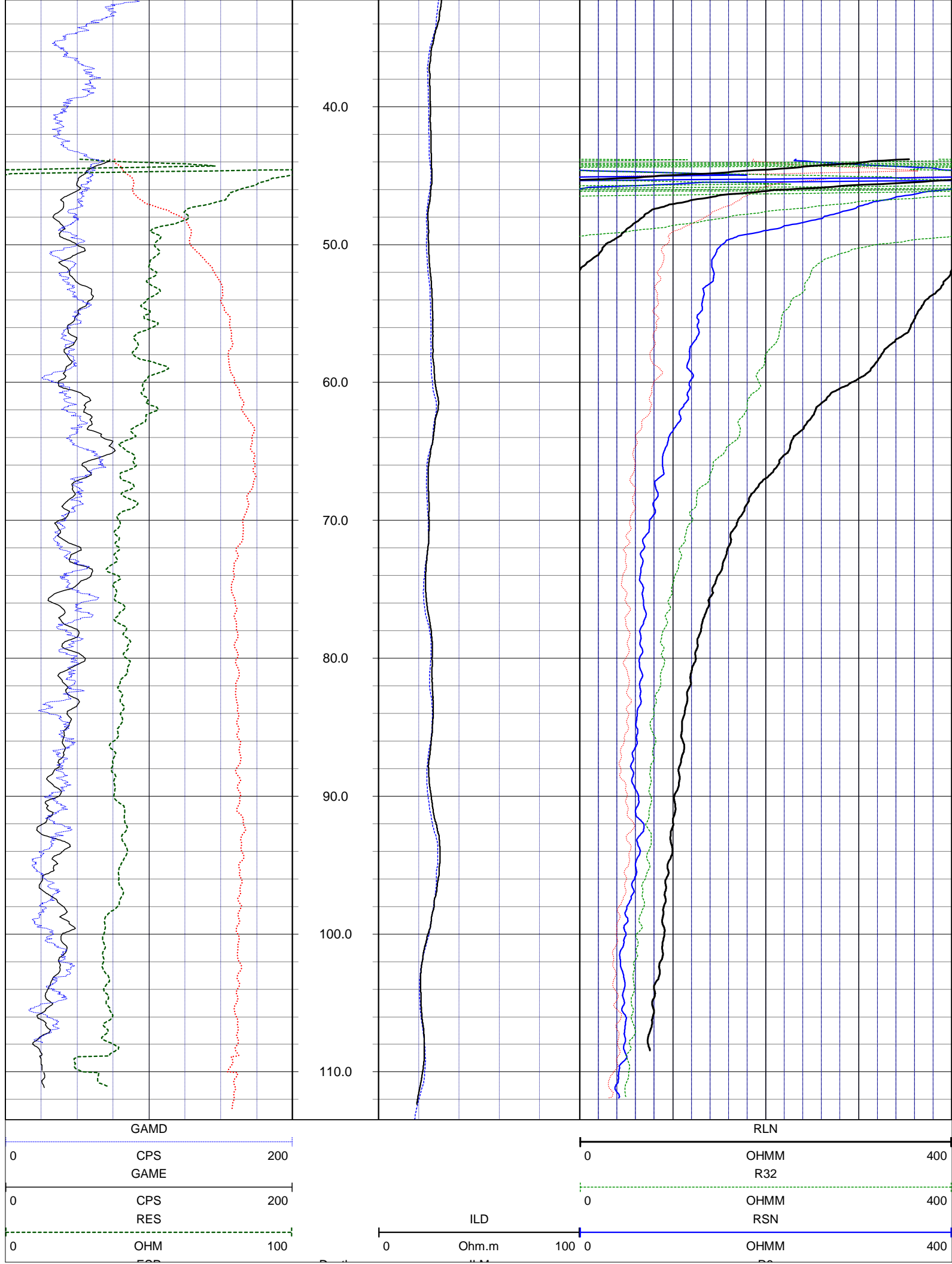
Licensed and Insured

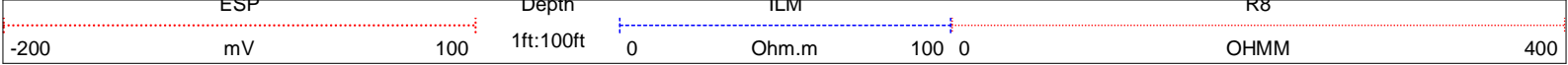
LOGS PROVIDED:
NORMAL RESISTIVITIES
INDUCTION RESISTIVITIES
SPONTANEOUS POTENTIAL
SINGLE POINT RESISTIVITY
NATURAL GAMMA

SRVC	Rmbaker LLC
UWI	L8FEB4L
FLD	L-8 RESERVOIR
PROV	FL
CTY	PALM BEACH
PERMANENT DATUM:	COMPANY: Rmbaker LLC
	WELL NAME: L8FEB4L
	FIELD: L-8 RESERVOIR
	COUNTRY: USA STATE: FL COUNTY: PALM BEACH
LOG MEAS. FROM: GROUND SURFACE	LOC: N/A
	NOTES: ALL SERVICES: CALIPER NATURAL GAMMA DUAL INDUCTION ELECTRIC SONIC
DRILLING MEAS. FROM:	SEC TWP RGE
	ELEVATION: COORDINATES: -80D22M35.32S 26D43M27.13S

DATE	13 May 14	TYPE FLUID IN HOLE	MUD
RUN No	1	SALINITY	
TYPE LOG	DUAL IND+ELECTRIC	DENSITY	
DEPTH-DRILLER	115	LEVEL	
DEPTH-LOGGER	115.7	MAX. REC. TEMP.	
BTM LOGGED INTERVAL		LOGGING SPEED (FT/MIN)	25
TOP LOGGED INTERVAL		TROLLING DIRECTION	UP
DRILLER	CENTERLINE	PUMPING RATE (GPM)	
RECORDED BY	Rmbaker LLC		
WITNESSED BY	B. COLLINS		
RUN BOREHOLE RECORD			
NO.	BIT FROM	TO	SIZE MAT. FROM TO
1	5.875	0	115







NOTES:

While due care has been exercised in the performance of these measurements and observations, in accordance with methodologies utilized by the general practitioner, RIMBAKER LLC can make no representations, warranties, or guarantees with respect to latent or concealed conditions that may exist, which may be beyond the detection capabilities of the methodologies used, or that may extend beyond the areas and depths surveyed.

The geophysical well logs show subsurface conditions as they existed at the dates and locations shown, and it is not warranted that they are representative of subsurface conditions at other locations and times.

If, at any time, different subsurface conditions from those observed are determined to be present, we must be advised and allowed to review and revise our observations if necessary.

Certificate of Authorization GB 458

END OF LOG