

Company	Lake Worth Utilities	Well	F-1
Field	Lake Worth	County	Palm Beach
Location	City of Lake Worth Water Treatment Plant	State/Prv	Florida
County	Palm Beach	Permanent Datum	G.L.
State/Prv	Florida	Log Measured From	G.L.
City of Lake Worth	Water Treatment Plant	Elevation	25'
JLA Geosciences, Inc.		K.B. 30'	Elevation
		D.L./S/P	
		XY/SR	
		FCT	
		Drilling Measured From	G.L.
		Date	13-APR-2005
Run Number	FOUR	Depth Other	1530'
Depth Logger	1530'	Depth Interval	1530'
Top of Interval	1845'	Open Hole Size	16.25"
Type Fluid	WATER	Density / Viscosity	NA/NA
Max. Recorded Temp.	NA	Estimated Cement Top	NA
Time Well Ready	ROA 4/13/05	Time Well Logged on Bottom	2:03:34 4/13/05
Time Well Logged	2:03:34 4/13/05	Time Well Logged	2:03:34 4/13/05
Location Number	FI Mares	Recorded By	S. Miller
Witnessed By	Charlie (AVEI)	Checked By	
Run Number	BI	From	To
ONE	12"	SURFACE	235'
THREE	12.25"	200'	900'
FOUR	16.25"	910'	1550'
Casing Record	30"	Size	Weight
Surface String	0.375" WT	Surface	180'
Production String	18"	Bottom	910'
Production String	20050071		

All interpretations are opinions based on inferences from electrical or other measurements and we cannot and do not guarantee the accuracy or correctness of any interpretation, and we shall not, except in the case of gross or willful negligence on our part, be liable or responsible for any loss, costs, damages, or expenses incurred or sustained by anyone resulting from any interpretation made by any of our officers, agents or employees. These interpretations are also subject to our general terms and conditions set out in our current Price Schedule.

Comments

STATIC and DYNAMIC down passes were made at 50 fpm.

1 Stations were performed.

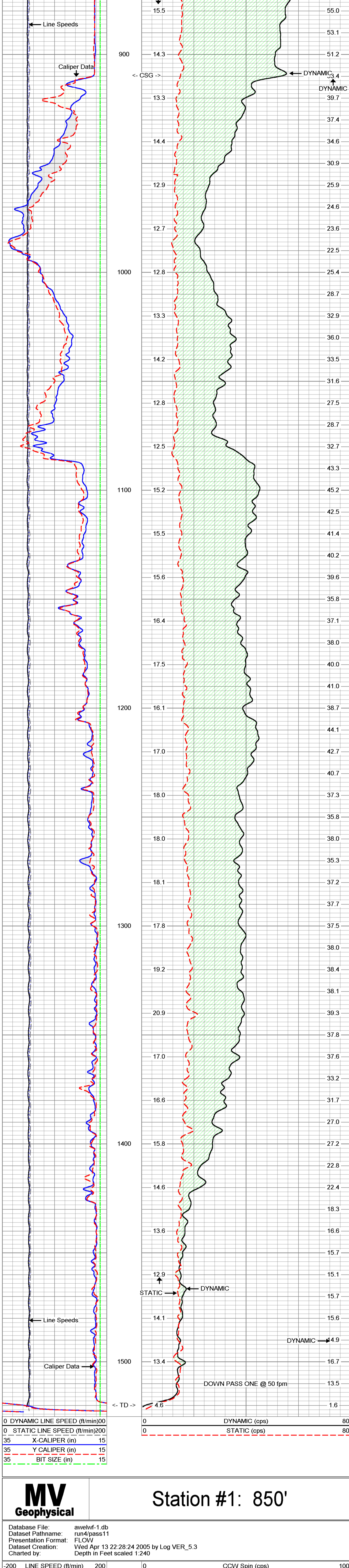
Q = 1-500 gpm

Drilling Contractor: All Webb Enterprises, Inc.

MV Geophysical S/D DOWN @ 50 fpm

Database File: awelw1-1.db
 Dataset Pathname: run4/SD50
 Presentation Format: QLW
 Dataset Creation: Wed Apr 13 21:59:23 2005
 Charted by: Depth in Feet scaled 1:240

0 DYNAMIC LINE SPEED (ft/min)	00	0 DYNAMIC (cps)	80
0 STATIC LINE SPEED (ft/min)	200	0 STATIC (cps)	80
35 X-CALIPER (in)	15		
35 Y-CALIPER (in)	15		
35 BIT SIZE (in)	15		

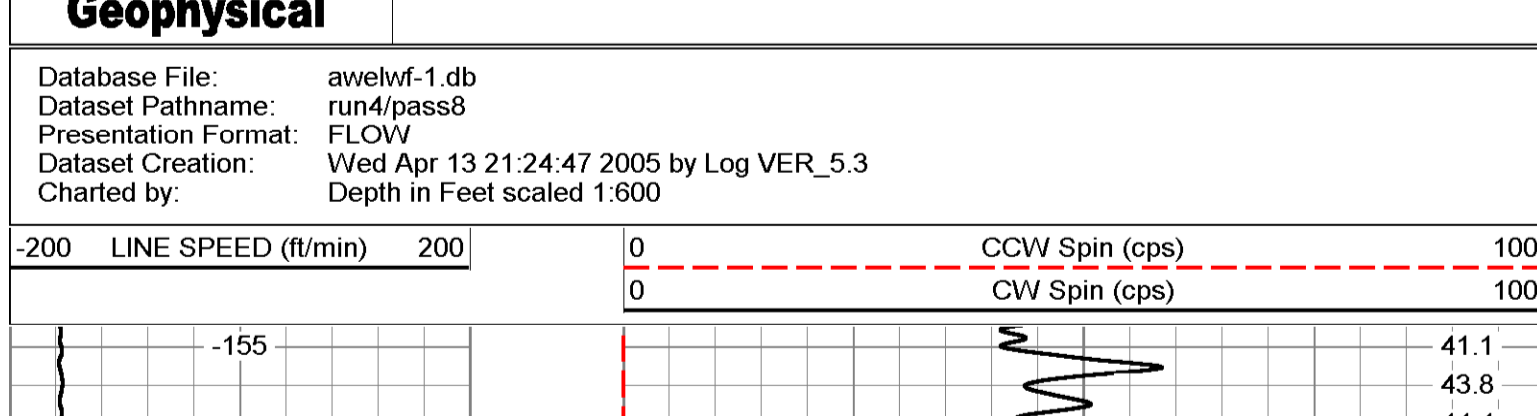


0 DYNAMIC LINE SPEED (ft/min)	00	0 DYNAMIC (cps)	80
0 STATIC LINE SPEED (ft/min)	200	0 STATIC (cps)	80
35 X-CALIPER (in)	15		
35 Y-CALIPER (in)	15		
35 BIT SIZE (in)	15		

MV Geophysical Station #1: 850'

Database File: awelw1-1.db
 Dataset Pathname: run4/pass11
 Presentation Format: FLOW
 Dataset Creation: Wed Apr 13 22:28:24 2005 by Log VER_5.3
 Charted by: Depth in Feet scaled 1:240

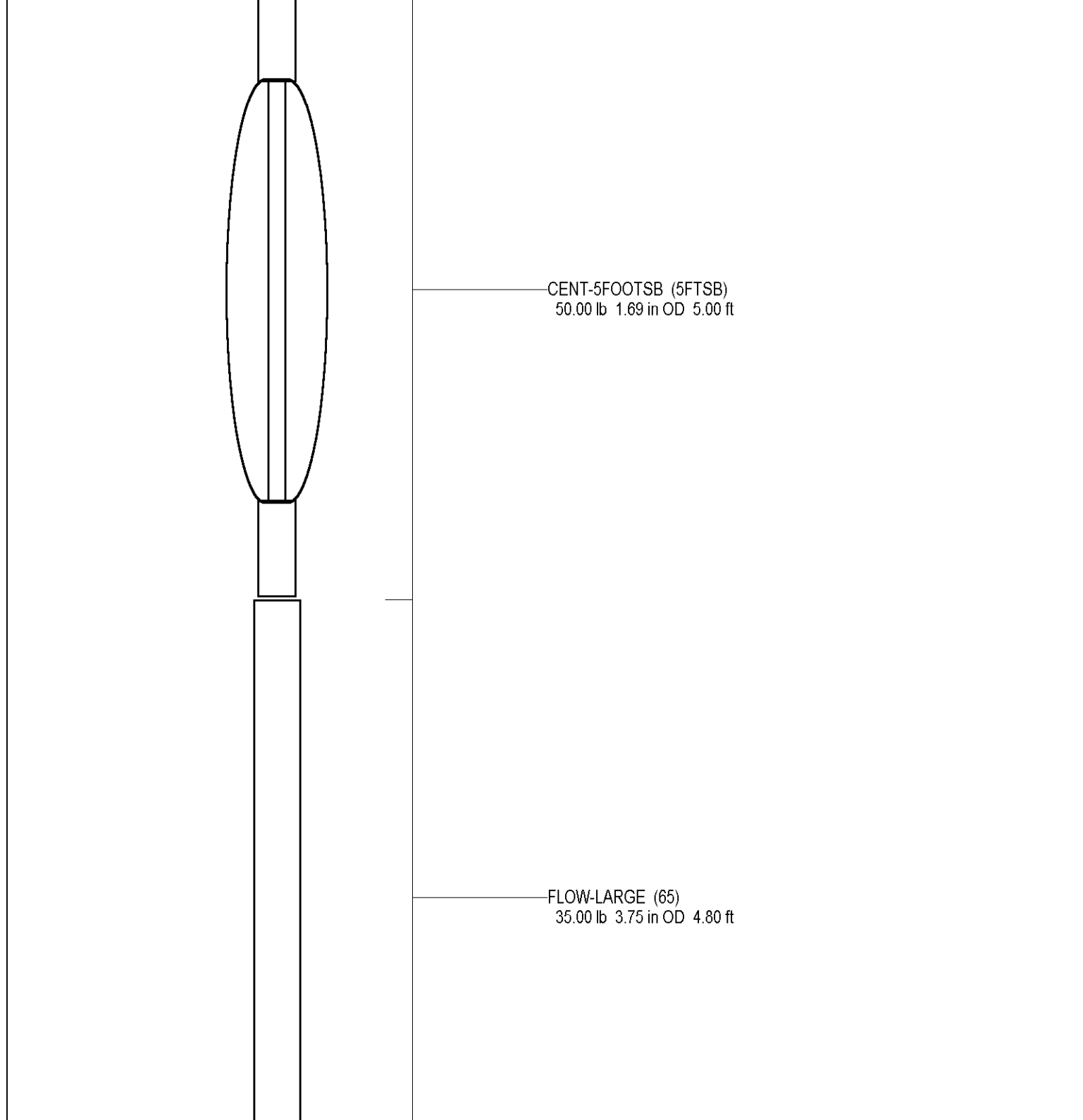
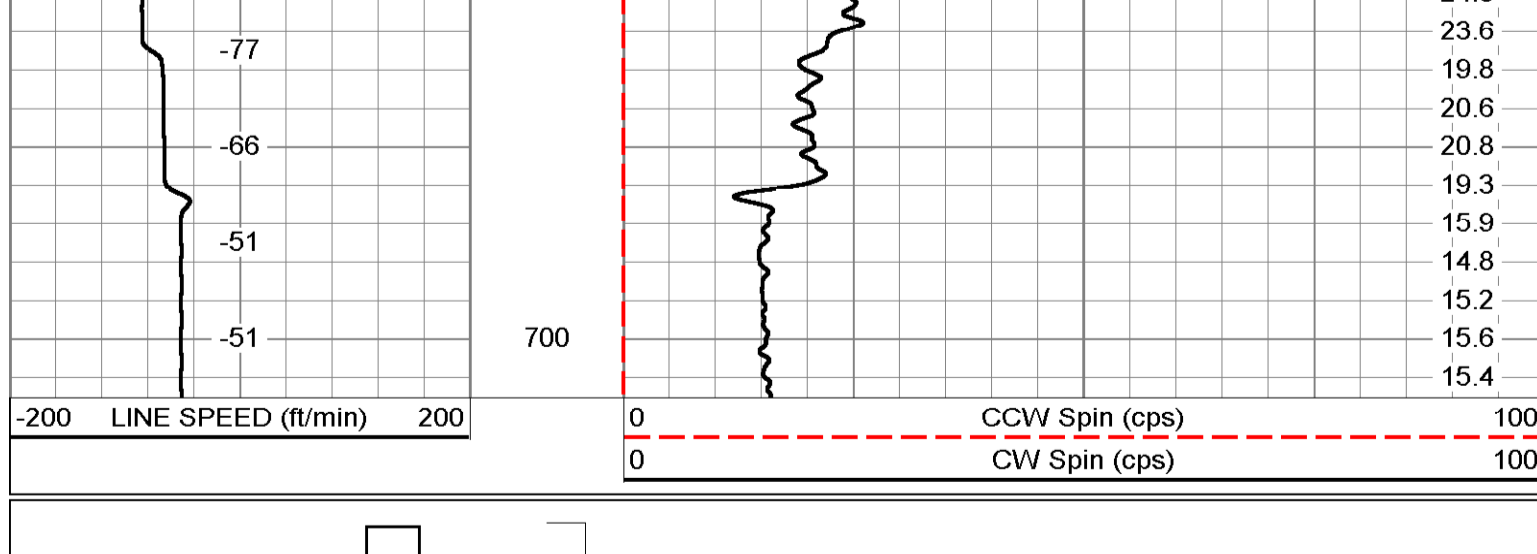
-200 LINE SPEED (ft/min)	200	0 CCW Spin (cps)	100
		0 CW Spin (cps)	100



MV Geophysical Q Calibration Down

Database File: awelw1-1.db
 Dataset Pathname: run4/pass8
 Presentation Format: FLOW
 Dataset Creation: Wed Apr 13 21:24:47 2005 by Log VER_5.3
 Charted by: Depth in Feet scaled 1:600

-200 LINE SPEED (ft/min)	200	0 CCW Spin (cps)	100
		0 CW Spin (cps)	100



Dataset: run4/pass8
 Total Length: 9.80 ft
 Total Weight: 85.00 lb
 O.D.: 3.75 in